

AUSTIN B. KLAUS



Cell 785.650.3629
Work 785.483.3145
Ext 225

PO BOX 352
Russell, KS 67665
austin.klaus@johnofarmer.com

Scale 1:240 (5"=100') Imperial
Measured Depth Log

Well Name: Van Loenen C #1
Location: Graham County
License Number: API #15-065-24,097-0000
Spud Date: 2/7/15
Surface Coordinates: Section 11, Township 9 South, Range 22 West
1,115' FNL & 950' FWL
Bottom Hole Coordinates: Vertical well with minimal deviation, same as above
Ground Elevation (ft): 2,206' **K.B. Elevation (ft):** 2,211'
Logged Interval (ft): 3,100' **To:** RTD **Total Depth (ft):** 3,880'
Formation: LKC, Arbuckle
Type of Drilling Fluid: Chemical (Mud Co.)

Region: Kansas
Drilling Completed: 2/13/15

Printed by STRIP.LOG from WellSight Systems 1-800-447-1534 www.WellSight.com

OPERATOR

Company: John O. Farmer, Inc.
Address: 370 W. Wichita Ave.
Russell, KS 67665

Comments

The Van Loenen C #1 well was drilled by WW Rig #6 (Tool Pusher: Mark Biggie).

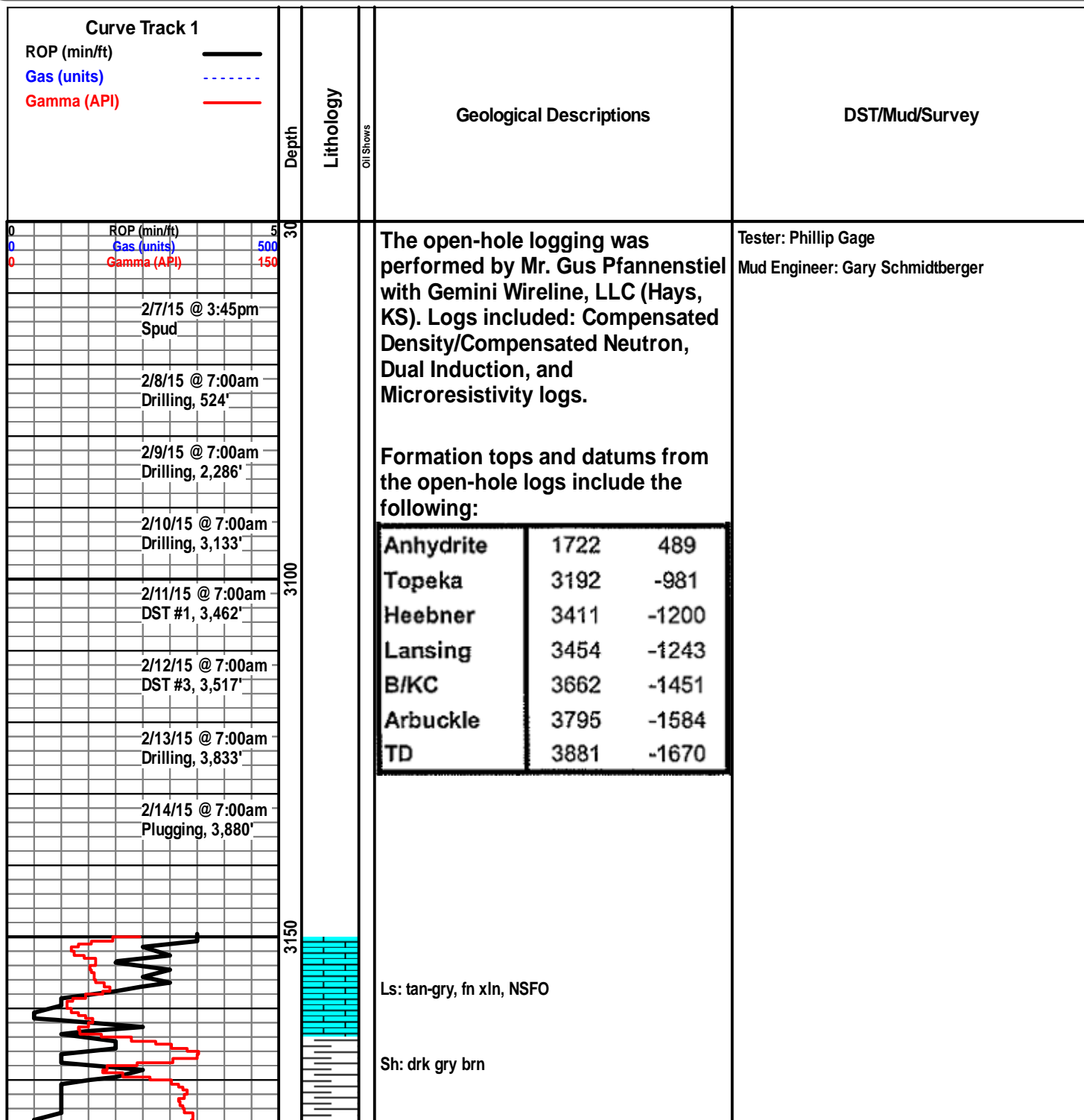
The location for the Van Loenen C #1 well was found via 3-D seismic survey. Geologic samples were collected and evaluated from 3,150'-3,880'. Structurally, the Van Loenen C #1 ran high to nearby dry holes and 4' low to the Van Loenen Unit #1, 1,350' to the southwest. Three bottom-hole tests were conducted in the Toronto-LKC A, C-D, & E-F, all yielding negative results. Upon completion of the logging operation a straddle test was conducted over the top 27' of Arbuckle, yielding negative results. Fluid recovery and inadequate pressures indicate that the Van Loenen Unit #1 has effectively drained this feature. Upon completion of the drill stem test, the decision was made to plug and abandon the Van Loenen C #1 well on 2/14/15.

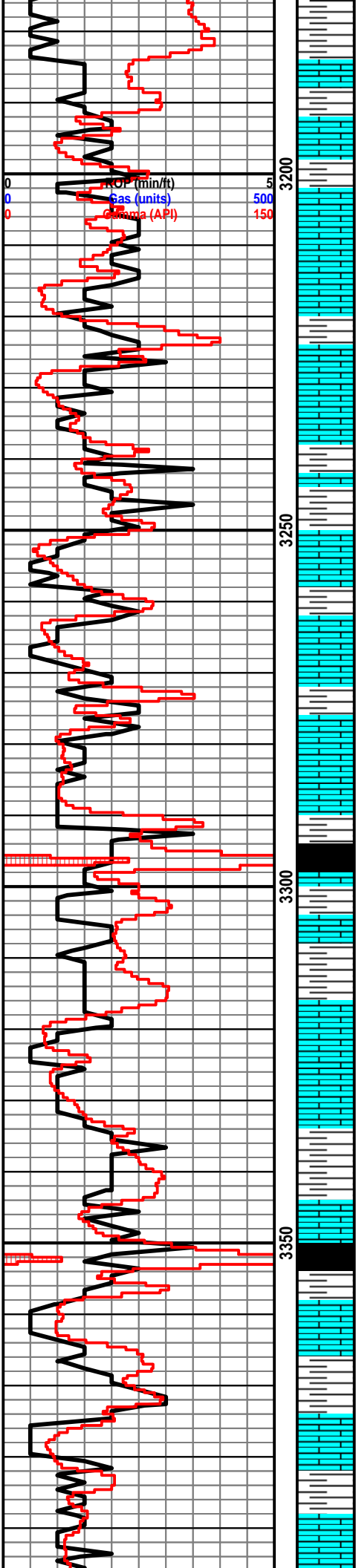
ROCK TYPES

 Anhy  Bent  Brec  Cht	 Clyst  Coal  Congl  Dol	 Gyp  Igne  Lmst  Meta	 Mrlst  Salt  Shale  Shcol	 Shgy  Slstst  Ss  Till
--	--	--	--	---

OTHER SYMBOLS

POROSITY <input type="checkbox"/> Earthy <input type="checkbox"/> Fenest <input type="checkbox"/> Fracture <input type="checkbox"/> Inter <input type="checkbox"/> Moldic <input type="checkbox"/> Organic <input type="checkbox"/> Pinpoint	<input checked="" type="checkbox"/> Vuggy SORTING <input type="checkbox"/> Well <input type="checkbox"/> Moderate <input type="checkbox"/> Poor	ROUNDING <input type="checkbox"/> Rounded <input type="checkbox"/> Subrnd <input type="checkbox"/> Subang <input type="checkbox"/> Angular OIL SHOW <input checked="" type="checkbox"/> Even	<input type="checkbox"/> Spotted <input type="checkbox"/> Ques <input type="checkbox"/> Dead INTERVAL <input type="checkbox"/> Core <input type="checkbox"/> Dst	EVENT <input type="checkbox"/> Rft <input type="checkbox"/> Sidewall
--	--	--	--	---





Sh: gry-drk gry

Topeka 3192' (-981)

Ls: off wh-tan-gry, fn xln, scat chalky, NSFO

Ls: tan-gry, fn xln, mottled, scat chert-off wh, NSFO

Sh: drk gry-brn, soft

Ls: tan-lt gry, fn-md xln, mostly DNS, NSFO, chalky

Sh: drk brn-gry

Ls: tan-crm, fn xln, scat fossil, NSFO

Ls: ala

Sh: lt gry-drk gry

Ls: off wh-gry, fn xln, fossil, scat int fossil porosity, NSFO, scat chert-off wh

Sh: drk gry-blk

Sh: ala

Ls: tan-crm, fn xln, scat chalky, NSFO

Sh: lt gry-drk gry

Sh: blk, carb, fissile

Ls: tan-brn, fn xln, fossil, scat fossil porosity, NSFO

Ls: tan-brn, fn-md xln, mostly DNS, NSFO, scat chert-off wh-gry

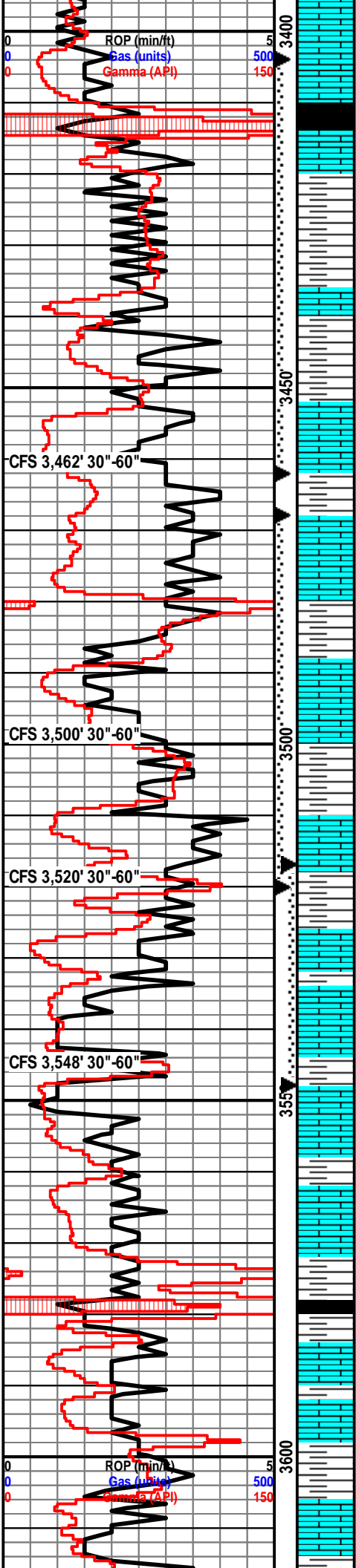
Sh: gry

DST #1 3,404'-3,462' (Toronto-LKC A)

30"-30"-60"-60"

IF: weak blow built to 3"

FF: weak blow built to 2"



Ls: tan-lt gry, fn xln, mostly DNS

Heebner 3411' (-1200)

Sh: blk, carb, fissile

Ls: tan-lt gry, fn xln, DNS

Sh: lt gry-drk gry

Toronto 3436' (-1225)

Ls: off wh-tan, fn xln, ool, scat fossil, fair oom porosity, NSFO

Sh: drk gry

Lansing 3452' (-1241)

Ls: off wh-tan, fn xln, ool, fair oom porosity, scat-fair oil st, VSSFO, sl odor

Sh: drk gry-brn, scat sltst

Ls: tan-lt gry, fn-md xln, mostly DNS, NSFO

Sh: drk gry

Ls: off wh-tan, fn xln, poor-fair int xln porosity, fair oil st, SSFO, sl-fair odor, scat chert-off wh

Sh: drk gry-brn-grn

Ls: off wh-lt brn, fn xln, scat fossil, vry poor int xln porosity, NSFO, chalky

Sh: drk gry-brn

Ls: tan-lt gry, fn-md xln, poor int xln porosity, NSFO, chert-off wh-gry

Ls: off wh-tan, fn xln, fair int xln & vuggy porosity, sl-fair oil st, VSSFO, sl odor, vry chalky

CFS 3,548' 30"-60"

Ls: off wh-tan, fn xln, ool, fair oom porosity, NSFO, scat chalky

Ls: tan-lt gry, fn xln, poor int xln porosity, NSFO, scat chert-off wh-gry, chalky

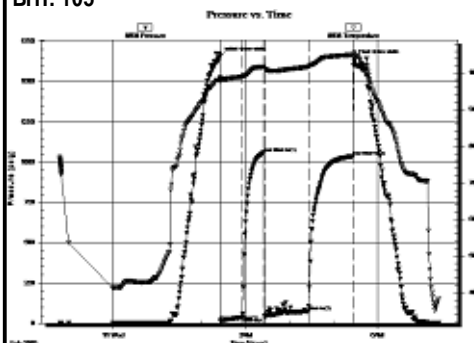
Sh: blk, carb, fissile

Ls: tan-brn, fn xln, scat int xln porosity, scat chert-off wh-gry, chalky, NSFO

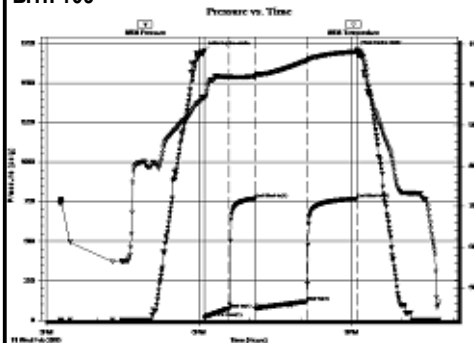
Sh: drk gry-brn

Ls: off wh-tan, fn xln, poor vuggy porosity, scat-fair oil st, VSSFO, sl odor, scat pyrite

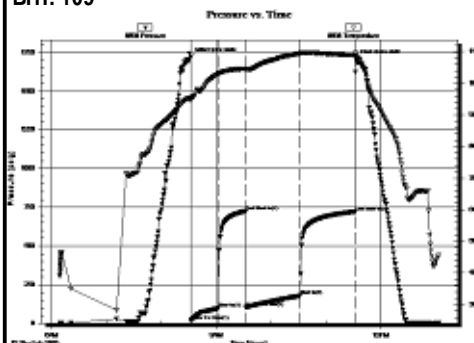
FF: weak blow built to 2'
Rec: 130' Water Cut Mud (10% W, 90% M)
FP: 15-38, 43-76#
SIP: 1,059-1,037#
HP: 1,656-1,637#
BHT: 105

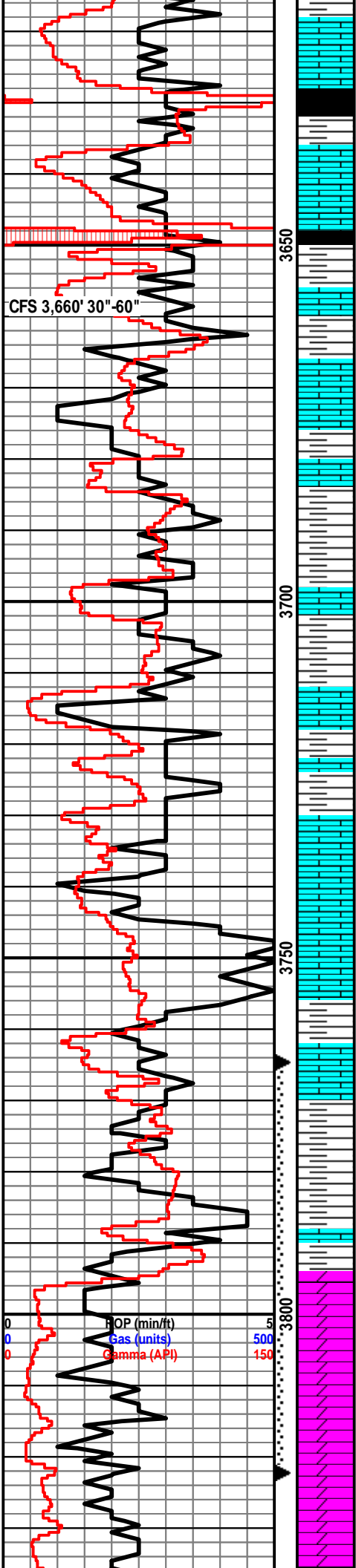


DST #2 3,478'-3,520' (LKC C-D)
30"-30"-60"-60"
IF: weak blow built to 6"
FF: weak blow built to 8.5"
Rec: 229' Mud Cut Water (15% M, 85% W) Chl. 70K
FP: 17-73, 76-120#
SIP: 771-769#
HP: 1,704-1,708#
BHT: 109



DST #3 3,517'-3,548' (LKC E-F)
30"-30"-60"-60"
IF: BOB in 23 minutes, no blow back
FF: BOB in 31 minutes, no blow back
Rec: 252' Mud Cut Water (10% M, 90% W) Chl. 90K, 93' Muddy Water (40% M, 60% W)
FP: 17-98, 104-178#
SIP: 723-722#
HP: 1,719-1,705#
BHT: 109





Sh: drk gry

Ls: off wh-tan fn xln, mostly DNS, NSFO

Sh: drk gry-blk

Ls: off wh-tan, fn-md xln, scat ool, poor-fair ool porosity, fair-good oil sat, SSFO, fair odor

Sh: drk gry-blk

Ls: off wh-lt brn, fn xln, scat int xln porosity, scat oil st, NSFO, no odor, chalky, chert-off wh

B/KC 3663' (-1452)

Sh: drk gry-grn-brn

Sh: lt gry-drk gry-brn, vry soft

Sh: ala

Ls: off wh-crm, fn xln, vry DNS, NSFO

Sh: drk gry-brn

Ls: tan-lt gry, fn-md xln, mostly DNS, hvy chert-off wh-gry, NSFO

Ls: ala

Ls: off wh-lt brn, fn-md xln, no visible porosity, NSFO, chalky, fossil

Ls: tan-brn, fn xln, mostly DNS, NSFO

Sh: drk gry-grn

Sh: lt gry-drk brn-grn

Arbuckle 3793' (-1582)

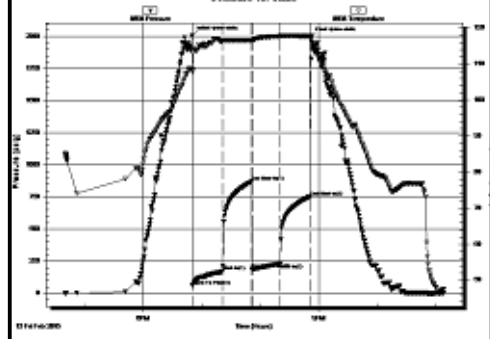
Dolo: off wh-lt tan, fn-md xln, fair int xln porosity, good oil sat, GSFO, good-strong odor

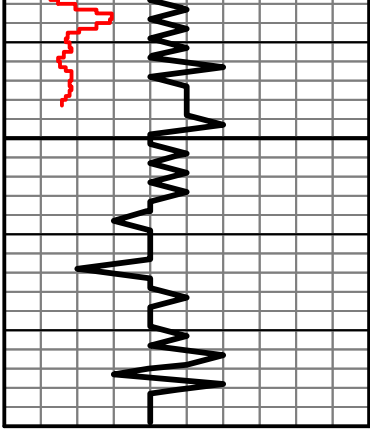
Dolo: off wh-tan, fn-md xln, fair-good sucrosic xln porosity, good oil sat, GSFO, good-strong odor, fair yel fluor

Dolo: off wh-tan, md-crs xln, fair-good int xln porosi, fair-good oil sat, FSFO, good odor

Dolo: off wh-tan, fn-md xln, fair int xln porosity,

DST #4 3,765'-3,822' (Top 27' Arbuckle)
 30"-30"-30"-30"
 IF: BOB in 10 minutes, no blow back
 FF: BOB in 18 minutes, no blow back
 Rec: 5' Clean Oil, 176' SO&WCM (2%O, 18%W, 80%M), 126' SO&GCWM (2%O, 3%G, 5%W, 90%M), 126' SOCMW (2%O, 30%M, 68%W)
 FP: 58-172, 189-231#
 SIP: 869-750#
 HP: 2,006-1,995#
 BHT:117





3850



fair-good oil sat, S-FSFO, good odor, scat
chert-off wh

Dolo: off wh-tan, fn-md xln, poor-fair int xln
porosity, lt oil sat, VSSF0, sl odor

Dolo: off wh-tan-lt brn, fn-md xln, mostly DNS,
NSFO

Dolo: ala