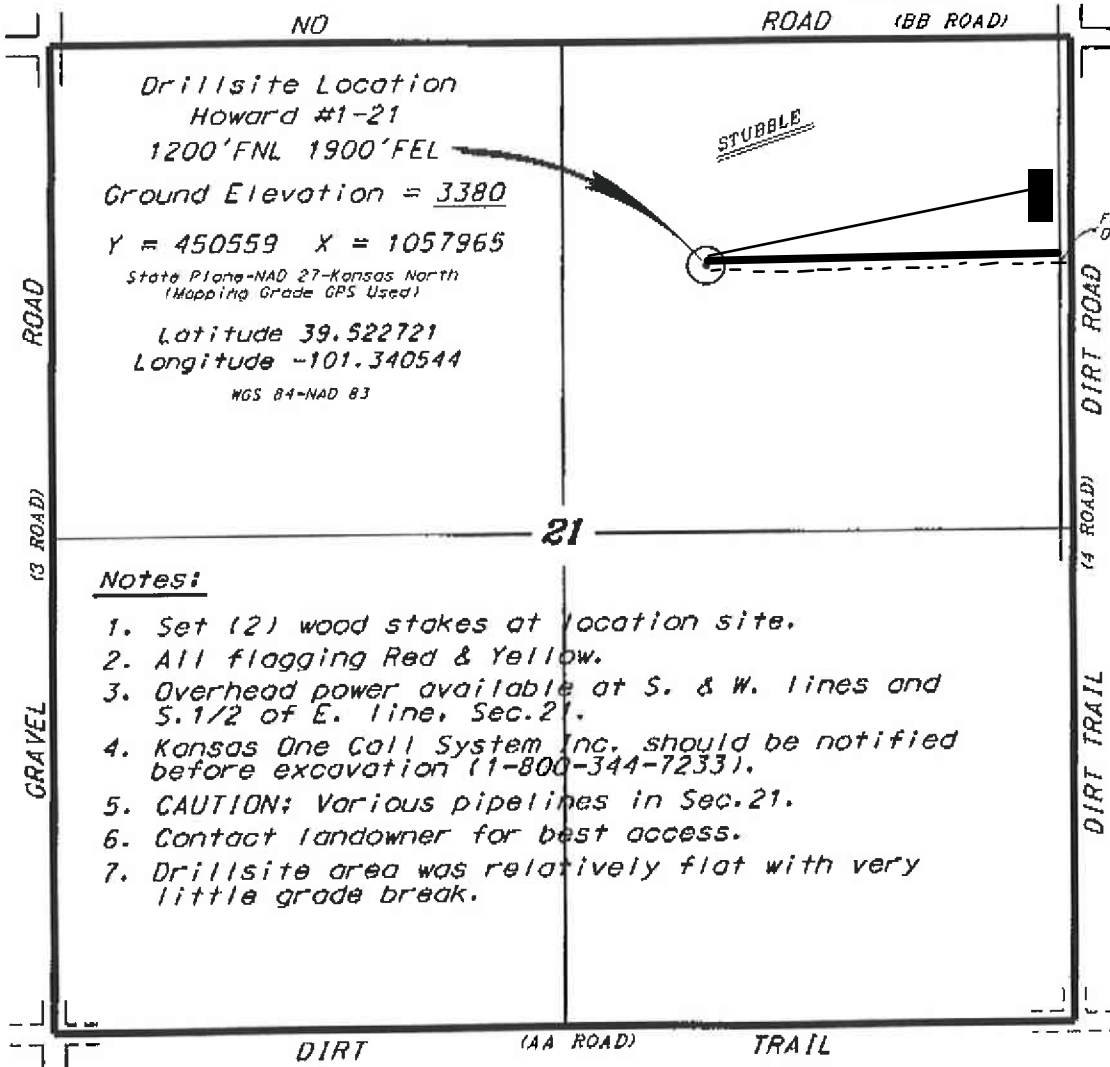


L.D. DRILLING, INC.
HOWARD LEASE
NE. 1/4, SECTION 21, T6S, R36W
THOMAS COUNTY, KANSAS

Directions:

From the intersection of a N-S paved road and Interstate 10 (1.3 miles south of Brewster, Kansas) go 13.7 miles North, then go 2.0 miles East, then go 1.0 miles South to the NE corner of Section 21, then go 0.22 miles South to a flag on the west edge of road, then go 0.35 miles West to location.



Drillsite Location
 Howard #1-21
 1200'FNL 1900'FEL
 Ground Elevation = 3380
 Y = 450559 X = 1057965
 State Plane-NAD 27-Kansas North
 (Mapping Grade GPS Used)
 Latitude 39.522721
 Longitude -101.340544
 NGS 84-NAD 83

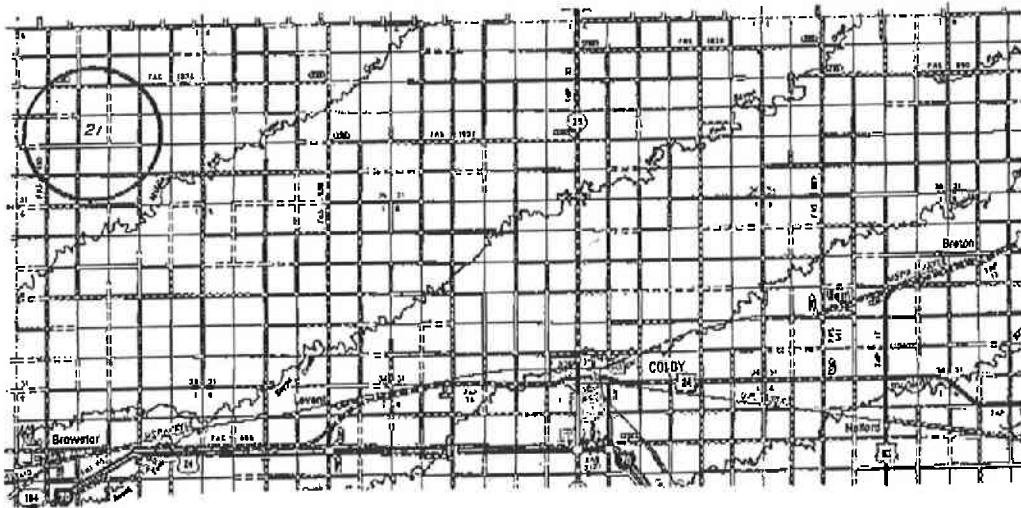
Notes:

1. Set (2) wood stakes at location site.
2. All flagging Red & Yellow.
3. Overhead power available at S. & W. lines and S. 1/2 of E. line, Sec. 21.
4. Kansas One Call System Inc. should be notified before excavation (1-800-344-7233).
5. CAUTION: Various pipelines in Sec. 21.
6. Contact landowner for best access.
7. Drillsite area was relatively flat with very little grade break.

*Ingress and egress to location as shown on this plot is per usage only and may not be legally opened for public use. Contact landowner, tenant and county road department for access.

FLAGGED ROAD OPPOSITE LOC.

SCALE 1" = 1000'



• Controlling data is based upon the best maps and photographs available to us and upon a regular section of land containing 640 acres.
 • Approximate section lines were determined using the normal standard of care of oilfield surveyors practicing in the state of Kansas. The location corners, which establish the precise section lines, were not necessarily located, and the exact location of the drillsite location in the section is not guaranteed. Therefore, the operator assuming this service and accepting this plot and all other details relating thereon agree to hold Central Kansas Oilfield Services, Inc., its officers and employees harmless from all losses, costs and expenses and said entities released from any liability from incidental or consequential damages.
 • Elevations derived from National Geodetic Vertical Datum.

Date June 3, 2015