

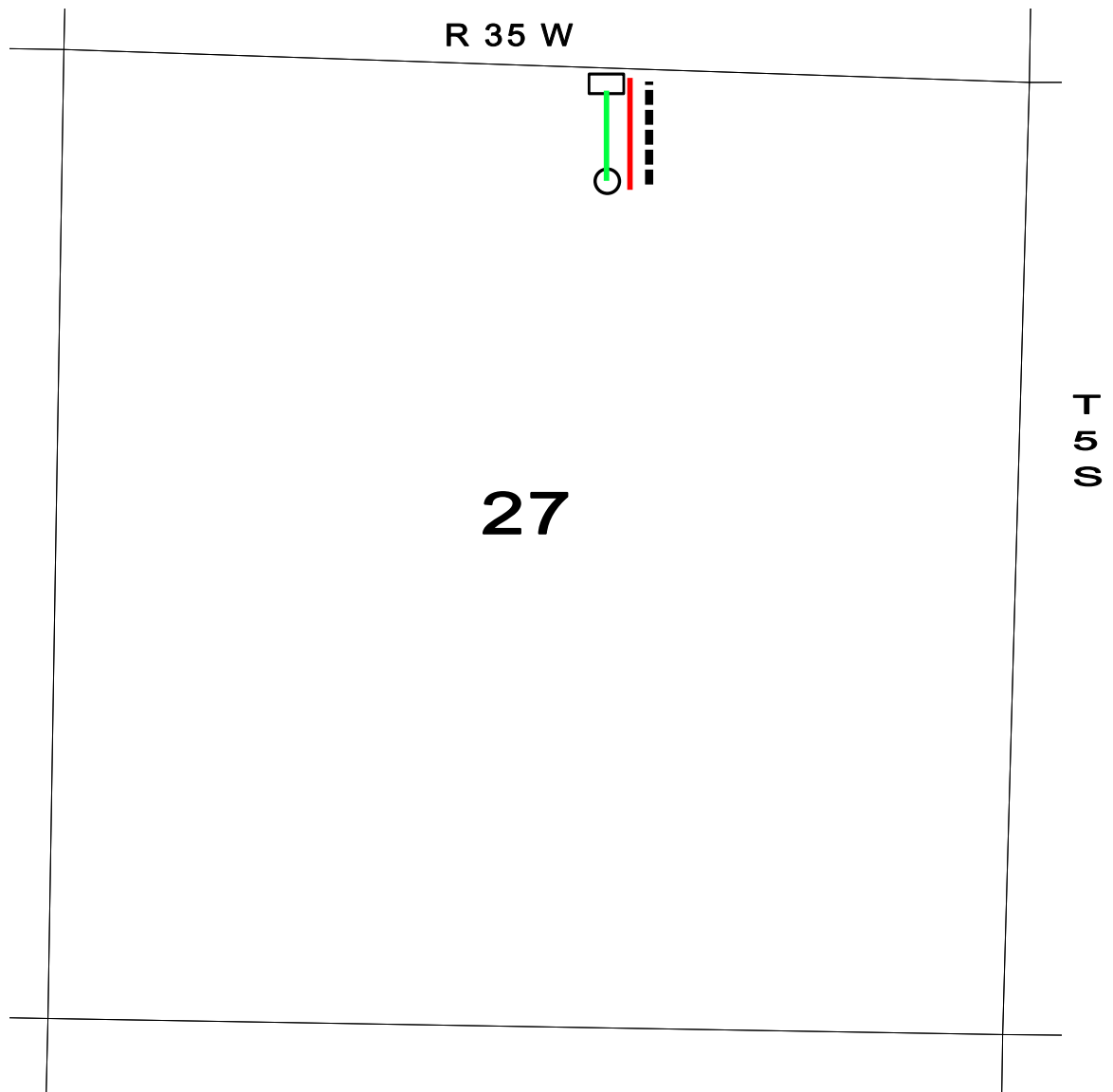
OPERATOR: Samuel Gary Jr. & Associates, Inc. 1515 Wynkoop Street, Suite 700
Denver, Colorado 80202 office: 303-831-4673 ; fax: 303-863-7285

WELL NAME: CURRY 1-27

LOCATION: 600 FNL / 2310 FEL Sec. 27-5S-35W RAWLINS COUNTY

SURFACE OWNERS:

Jon and Kimberly Burk
310 S. Wayne Ave.
Haysville, KS 67060



○ PROPOSED WELL LOCATION

□ ESTIMATED LOCATION OF TANK BATTERY

----- ESTIMATED LEASE ROAD

— ESTIMATED LOCATION OF FLOWLINES

— ESTIMATED LOCATION OF ELECTRICAL LINES