

DIAMOND TESTING, LLC
P.O. Box 157
HOISINGTON, KANSAS 67544
(620) 653-7550 • (800) 542-7313
HOLDERA5DST1

Company Weber Four Oil Company, Inc. Lease & Well No. Holder "A" No. 5
Elevation 1895 KB Formation Lansing/Kansas City "A-F" Effective Pay _____ Ft. Ticket No. A144
Date 2-6-15 Sec. 12 Twp. 16S Range 12W County Barton State Kansas
Test Approved By Wyatt Urban Diamond Representative Andy Carreira

Formation Test No. 1 Interval Tested from 3,035 ft. to 3,110 ft. Total Depth 3,110 ft.
Packer Depth 3,030 ft. Size 6 3/4 in. Packer Depth _____ ft. Size _____ in.
Packer Depth 3,035 ft. Size 6 3/4 in. Packer Depth _____ ft. Size _____ in.
Depth of Selective Zone Set _____ ft.

Top Recorder Depth (Inside) 3,018 ft. Recorder Number 5585 Cap. 5,000 psi.
Bottom Recorder Depth (Outside) 3,037 ft. Recorder Number 8471 Cap. 10,000 psi.
Below Straddle Recorder Depth _____ ft. Recorder Number _____ Cap. _____ psi.

Drilling Contractor Southwind Drilling, Inc. - Rig 1 Drill Collar Length _____ ft I.D. _____ in.
Mud Type Chemical Viscosity 48 Weight Pipe Length _____ ft I.D. _____ in.
Weight 9.1 Water Loss 8.8 cc. Drill Pipe Length 3,003 ft I.D. 3 1/2 in.
Chlorides 5,000 P.P.M. Test Tool Length 32 ft Tool Size 3 1/2-IF in.
Jars: Make Sterling Serial Number 9 Anchor Length 75 ft. Size 4 1/2-FH in.
Did Well Flow? No Reversed Out No Surface Choke Size 1 in. Bottom Choke Size 5/8 in.
Main Hole Size 7 7/8 in. Tool Joint Size 4 1/2-XH in.

Blow: 1st Open: Strong blow increasing. Off bottom of bucket in 19 mins. No blow back during shut-in.
2nd Open: Strong blow increasing. Off bottom of bucket in 41 mins. No blow back during shut-in.

Recovered 95 ft. of gas in pipe
Recovered 25 ft. of slightly oil specked mud = .355750 bbls. (Grind out: <1%-oil; >99%-mud)
Recovered 25 ft. of TOTAL FLUID = .355750 bbls.
Recovered _____ ft. of _____
Recovered _____ ft. of _____
Recovered _____ ft. of _____
Remarks Tool Sample Grind Out: 100%-mud

Time Set Packer(s) 7:11 P.M. Time Started off Bottom 9:41 P.M. Maximum Temperature 96°
Initial Hydrostatic Pressure.....(A) 1447 P.S.I.
Initial Flow Period.....Minutes 30 (B) 7 P.S.I. to (C) 12 P.S.I.
Initial Closed In Period.....Minutes 30 (D) 240 P.S.I.
Final Flow Period.....Minutes 45 (E) 9 P.S.I. to (F) 14 P.S.I.
Final Closed In Period.....Minutes 45 (G) 270 P.S.I.
Final Hydrostatic Pressure.....(H) 1430 P.S.I.

DIAMOND TESTING, LLC

TESTER : ANDY CARREIRA
CELL # 620-617-7202

General Information

Company Name	WEBER FOUR OIL COMPANY, INC		
Contact	N R WEBER	Job Number	A144
Well Name	HOLDER "A" #5	Representative	ANDY CARREIRA
Unique Well ID	DST 1 LKC "A-F" 3035-3110	Well Operator	WEBER FOUR OIL COMPANY, INC
Surface Location	SEC 12-16S-12W BARTON CNTY, KS	Report Date	2015/02/06
Well License Number		Prepared By	ANDY CARREIRA
Field	KRAFT-PRUSA		
Well Type	Vertical		

Test Information

Test Type	CONVENTIONAL
Formation	DST 1 LKC "A-F" 3035-3110
Well Fluid Type	01 Oil
Test Purpose	Initial Test

Start Test Date	2015/02/06	Start Test Time	16:55:00
Final Test Date	2015/02/06	Final Test Time	23:25:00

Gauge Name	5585
------------	------

Test Results

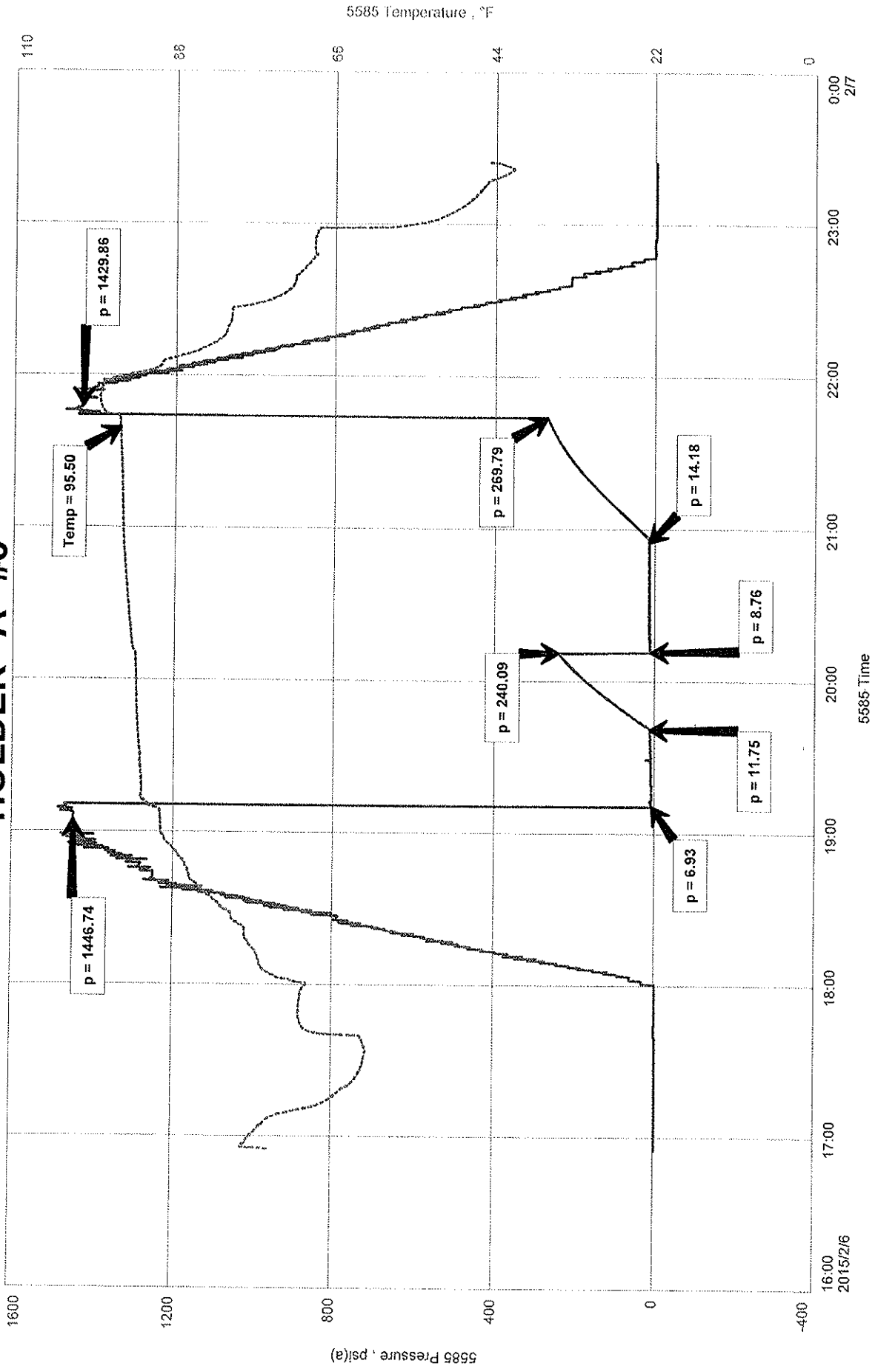
RECOVERY: 95' GIP
 25' SOSM <1% OIL, >99% MUD
 25' TOTAL FLUID

TOOL SAMPLE: 100% MUD

WEBER FOUR OIL COMPANY, INC
DST 1 LKC "A-F" 3035-3110
Start Test Date: 2015/02/06
Final Test Date: 2015/02/06

HOLDER "A" #5
Formation: DST 1 LKC "A-F" 3035-3110
Pool: WILDCAT
Job Number: A144

HOLDER "A" #5



16:00
2015/2/6

17:00

18:00

19:00

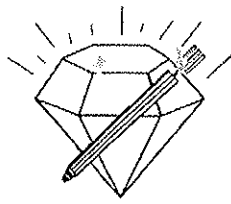
20:00

21:00

22:00

23:00

0:00
2/7



DIAMOND TESTING, LLC
 P.O. Box 157
HOISINGTON, KANSAS 67544
 (620) 653-7550 • (800) 542-7313
 HOLDERA5DST2

Company Weber Four Oil Company, Inc. Lease & Well No. Holder "A" No. 5
 Elevation 1895 KB Formation Lansing/Kansas City "H-K" Effective Pay _____ Ft. Ticket No. A145
 Date 2-7-15 Sec. 12 Twp. 16S Range 12W County Barton State Kansas
 Test Approved By Wyatt Urban Diamond Representative Andy Carreira

Formation Test No. 2 Interval Tested from 3,169 ft. to 3,270 ft. Total Depth 3,270 ft.
 Packer Depth 3,164 ft. Size 6 3/4 in. Packer Depth _____ ft. Size _____ in.
 Packer Depth 3,169 ft. Size 6 3/4 in. Packer Depth _____ ft. Size _____ in.
 Depth of Selective Zone Set _____ ft.

Top Recorder Depth (Inside) 3,152 ft. Recorder Number 5585 Cap. 5,000 psi.
 Bottom Recorder Depth (Outside) 3,171 ft. Recorder Number 8471 Cap. 10,000 psi.
 Below Straddle Recorder Depth _____ ft. Recorder Number _____ Cap. _____ psi.

Drilling Contractor Southwind Drilling, Inc. - Rig 1 Drill Collar Length _____ ft. I.D. _____ in.
 Mud Type Chemical Viscosity 56 Weight Pipe Length _____ ft. I.D. _____ in.
 Weight 9.2 Water Loss 8.0 cc. Drill Pipe Length 3,137 ft. I.D. 3 1/2 in.
 Chlorides 4,000 P.P.M. Test Tool Length 32 ft. Tool Size 3 1/2-IF in.
 Jars: Make Sterling Serial Number 9 Anchor Length 101 ft. Size 4 1/2-FH in.
 Did Well Flow? No Reversed Out No Surface Choke Size 1 in. Bottom Choke Size 5/8 in.
 Main Hole Size 7 7/8 in. Tool Joint Size 4 1/2-XH in.

Blow: 1st Open: Weak, surface blow. No blow back during shut-in.
2nd Open: No blow. Flushed tool. Surged. No blow. No blow back during shut-in.

Recovered 35 ft. of mud = .498050 bbls. (Grind out: 100%-mud)
 Recovered _____ ft. of _____
 Recovered _____ ft. of _____
 Recovered _____ ft. of _____
 Recovered _____ ft. of _____
 Recovered _____ ft. of _____
 Remarks Tool Sample Grind Out: <1%-oil; >99%-mud

Time Set Packer(s) 3:50 P.M. Time Started off Bottom 5:50 P.M. Maximum Temperature 97°
 Initial Hydrostatic Pressure.....(A) 1513 P.S.I.
 Initial Flow Period.....Minutes 30 (B) 5 P.S.I. to (C) 13 P.S.I.
 Initial Closed In Period.....Minutes 30 (D) 128 P.S.I.
 Final Flow Period.....Minutes 30 (E) 14 P.S.I. to (F) 23 P.S.I.
 Final Closed In Period.....Minutes 30 (G) 124 P.S.I.
 Final Hydrostatic Pressure.....(H) 1481 P.S.I.

DIAMOND TESTING, LLC

TESTER : ANDY CARREIRA
CELL # 620-617-7202

General Information

Company Name	WEBER FOUR OIL COMPANY, INC		
Contact	N R WEBER	Job Number	A145
Well Name	HOLDER "A" #5	Representative	ANDY CARREIRA
Unique Well ID	DST 2 LKC "H-K" 3169-3270	Well Operator	WEBER FOUR OIL COMPANY, INC
Surface Location	SEC 12-16S-12W BARTON CNTY, KS	Report Date	2015/02/07
Well License Number		Prepared By	ANDY CARREIRA
Field	WILDCAT		
Well Type	Vertical		

Test Information

Test Type	CONVENTIONAL
Formation	DST 2 LKC "H-K" 3169-3270
Well Fluid Type	01 Oil
Test Purpose	Initial Test

Start Test Date	2015/02/07	Start Test Time	14:10:00
Final Test Date	2015/02/07	Final Test Time	19:23:00

Gauge Name	5585
------------	------

Test Results

RECOVERY: 35' MUD 100% MUD

TOOL SAMPLE: <1% OIL, >99% MUD

WEBER FOUR OIL COMPANY, INC
DST 2 LKC "H-K" 3169-3270
Start Test Date: 2015/02/07
Final Test Date: 2015/02/07

HOLDER "A" #5
Formation: DST 2 LKC "H-K" 3169-3270
Pool: WILDCAT
Job Number: A145

HOLDER "A" #5

