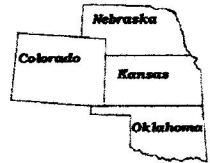


033429bar
CRD NO.

PRO-STAKE

LLC

12636
INVOICE NO.



Construction Site Staking

P.O. Box 2324 Garden City, Kansas 67846
Office/Fax: (620) 276-6159 - Cell: (620) 272-1499
bort@pro-stakek.ksoxmail.com

Oolite Energy Corp.
OPERATOR

Meade County, KS
COUNTY

2 34s 29w
Sec. Twp. Rng.

Cordes #1-2(relocate)
LEASE NAME

approx. C NE NW SE
LOCATION SPOT

2463.8'
GR. ELEVATION

SCALE: 1" = 1000'
DATE STAKED: June 5th, 2015
MEASURED BY: Kent C.
DRAWN BY: Norby S.
AUTHORIZED BY: Fred C.
DATE REVISED:

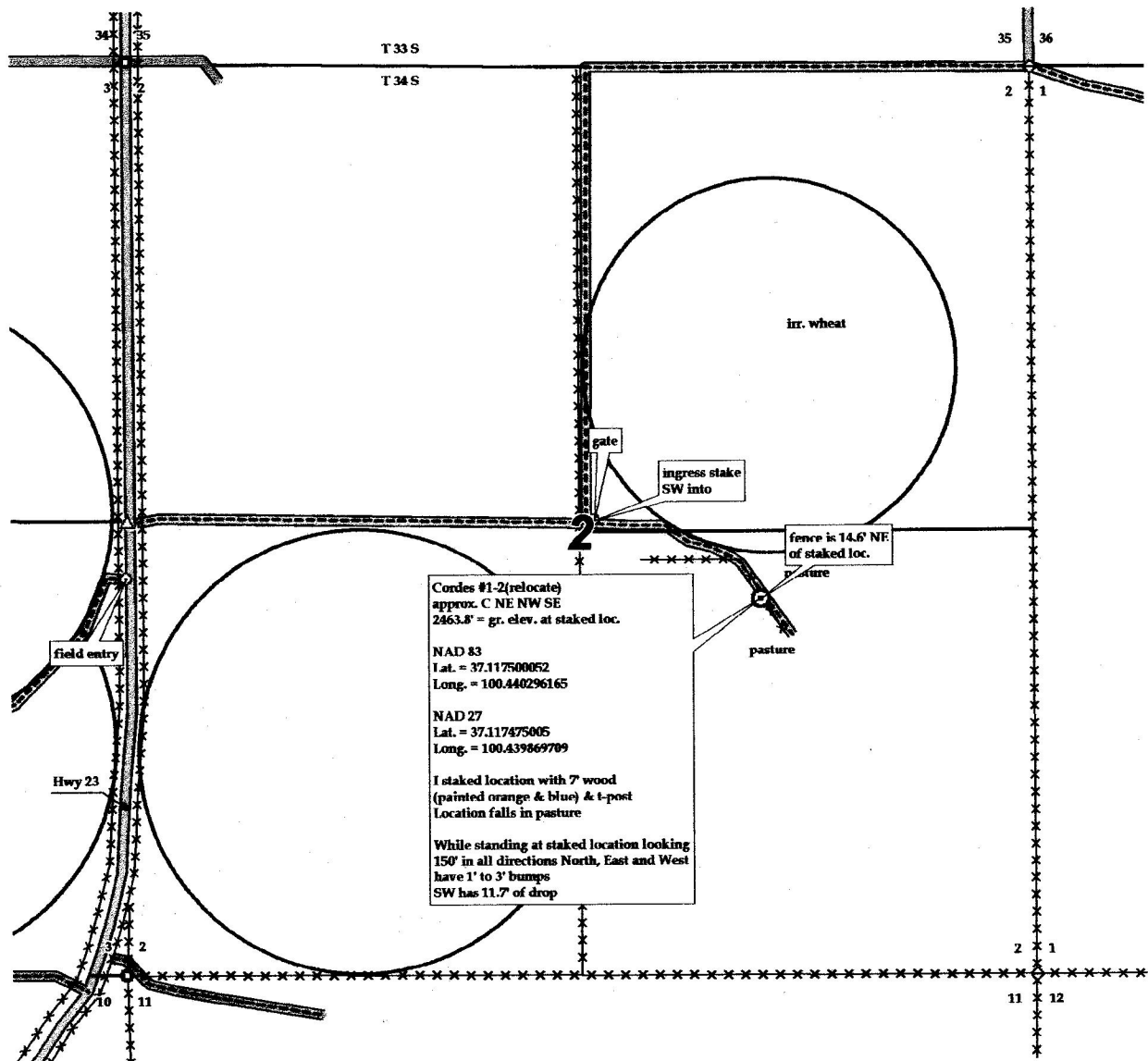


LEGEND

- ⊙ irr. well
- ⊕ water hydrant
- ⊙ tank battery
- ⊙ staked loc.
- ⊗ prod. well/aband. well
- house
- building
- ⊕— gas line
- W— water line
- E— transmission powerline
- 3 phase powerline
- - - - single phase powerline
- *-*-* fence
- ▨ gravel/sand rd.
- ▨ gravel trail/lease rd.
- ▨ dirt rd.
- ▨ dirt trail/lease rd.
- ▨ Hwy/blacktop rd.

DIRECTIONS: From the center of Meade, KS at the intersection of Hwy 54 West / Hwy 160 East and Hwy 23 - Now go 8 miles South on Hwy 23 - Now go West 6 miles West on Hwy 23 - Now go 2.5 miles South on Hwy 23 to the NW corner of section 2-34s-29w - Now go 0.5 mile South on Hwy 23 - Now go 0.7 mile East on trail, into staked location.
Final ingress must be verified with landowner or operator.

*This drawing does not constitute a monumented survey or a land survey plat.
This drawing is for construction purposes only.*



Cordes #1-2(relocate)
approx. C NE NW SE
2463.8' = gr. elev. at staked loc.

NAD 83
Lat. = 37.117500052
Long. = 100.440296165

NAD 27
Lat. = 37.117475005
Long. = 100.439869709

I staked location with 7' wood
(painted orange & blue) & t-post
Location falls in pasture

While standing at staked location looking
150' in all directions North, East and West
have 1' to 3' bumps
SW has 11.7' of drop