

DIAMOND TESTING, LLC
 P.O. Box 157
HOISINGTON, KANSAS 67544
 (620) 653-7550 • (800) 542-7313
 StoltenbergBoor2-17DST1

Company Bird Dog Oil, LLC Lease & Well No. Stoltenberg - Boor No. 2-17
 Elevation 1883 KB Formation Lansing/Kansas City "I & J" Effective Pay _____ Ft. Ticket No. RR104
 Date 10-19-14 Sec. 17 Twp. 16S Range 10W County Ellsworth State Kansas
 Test Approved By Adam Nighswonger Diamond Representative Ricky Ray

Formation Test No. 1 Interval Tested from 3,202 ft. to 3,232 ft. Total Depth 3,232 ft
 Packer Depth 3,197 ft. Size 6 3/4 in. Packer Depth _____ ft. Size _____ in.
 Packer Depth 3,202 ft. Size 6 3/4 in. Packer Depth _____ ft. Size _____ in.
 Depth of Selective Zone Set _____ ft.

Top Recorder Depth (Inside) 3,184 ft. Recorder Number 0062 Cap. 5,000 psi.
 Bottom Recorder Depth (Outside) 3,206 ft. Recorder Number 5954 Cap. 5,000 psi.
 Below Straddle Recorder Depth _____ ft. Recorder Number _____ Cap. _____ psi.

Drilling Contractor Southwind Drilling, Inc. - Rig 6 Drill Collar Length _____ ft I.D. _____ in.
 Mud Type Chemical Viscosity 52 Weight Pipe Length _____ ft I.D. _____ in.
 Weight 9.1 Water Loss 8.8 cc. Drill Pipe Length 3,169 ft I.D. 3 1/2 in.
 Chlorides 5,300 P.P.M. Test Tool Length 33 ft Tool Size 3 1/2-IF in.
 Jars: Make Sterling Serial Number 8 Anchor Length 30 ft. Size 4 1/2-FH in.
 Did Well Flow? No Reversed Out No Surface Choke Size 1 in. Bottom Choke Size 5/8 in.
 Main Hole Size 7 7/8 in. Tool Joint Size 4 1/2-XH in.

Blow: 1st Open: 1/2 in. blow increasing to 1 1/2 ins. in 15 mins. No blow back during shut-in.

2nd Open: No blow. No blow back during shut-in.

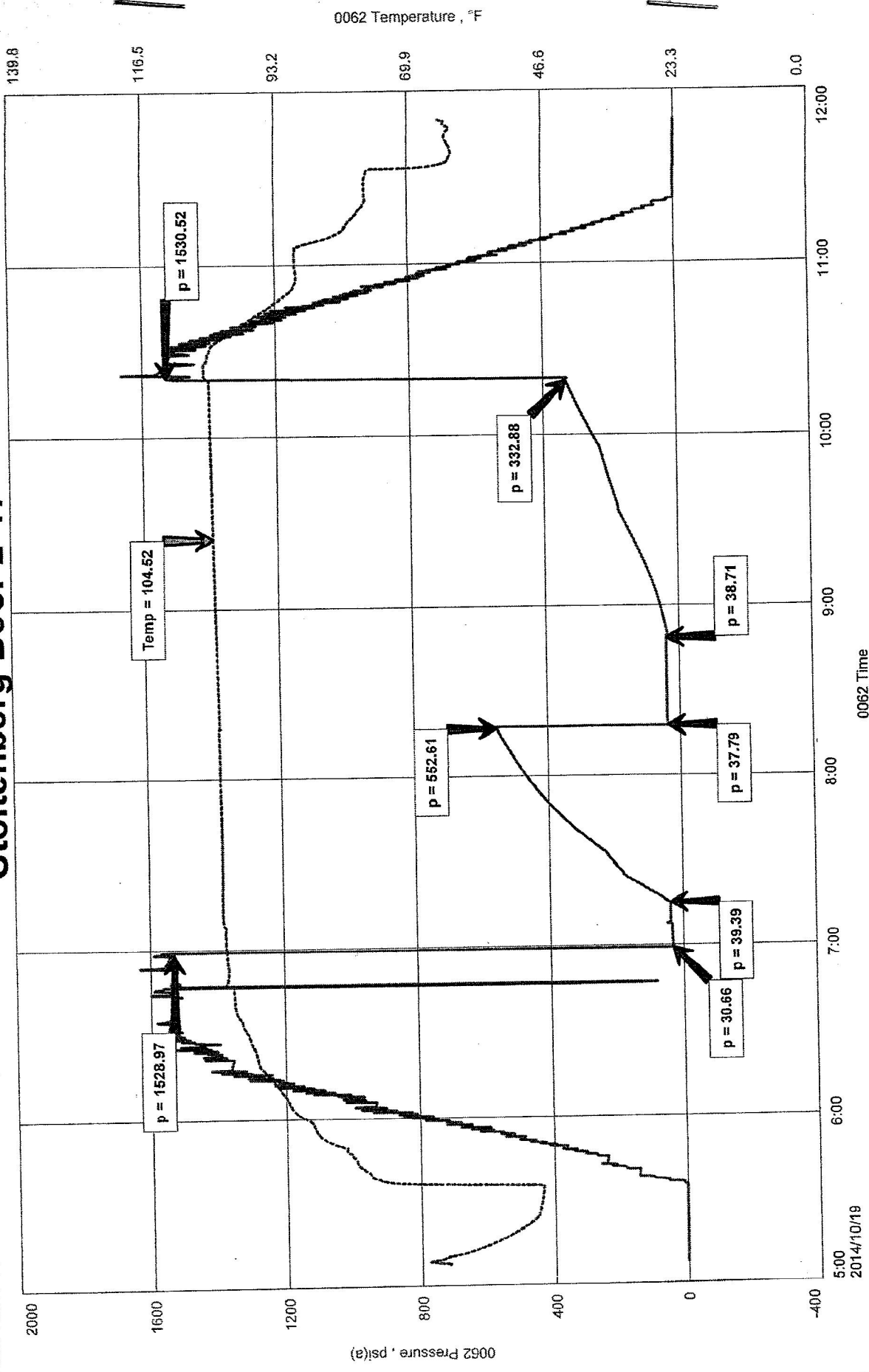
Recovered 60 ft. of mud = .853800 bbls. (Grind out: 100%-mud)
 Recovered _____ ft. of _____
 Recovered _____ ft. of _____
 Recovered _____ ft. of _____
 Recovered _____ ft. of _____
 Recovered _____ ft. of _____
 Remarks Tool Sample Grind Out: 100%-mud w/ a few oil specks

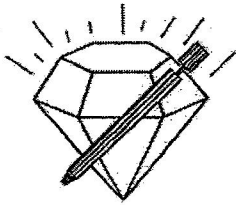
Time Set Packer(s) 7:01 A.M. Time Started off Bottom 10:16 A.M. Maximum Temperature 105°
 Initial Hydrostatic Pressure.....(A) 1529 P.S.I.
 Initial Flow Period.....Minutes 15 (B) 31 P.S.I. to (C) 39 P.S.I.
 Initial Closed In Period.....Minutes 60 (D) 553 P.S.I.
 Final Flow Period.....Minutes 30 (E) 38 P.S.I. to (F) 39 P.S.I.
 Final Closed In Period.....Minutes 90 (G) 333 P.S.I.
 Final Hydrostatic Pressure.....(H) 1531 P.S.I.

Formation: Dst 1 LKC "I-J" (3202-3232)
Pool: Infield
Job Number: RR104

Bird Dog Oil LLC
Dst 1 LKC "I-J" (3202-3232)
Start Test Date: 2014/10/19
Final Test Date: 2014/10/19

Stoltenberg Boor 2-17





DIAMOND TESTING, LLC
 P.O. Box 157
HOISINGTON, KANSAS 67544
 (620) 653-7550 • (800) 542-7313
 StoltenbergBoor2-17DST2

Company Bird Dog Oil, LLC Lease & Well No. Stoltenberg - Boor No. 2-17
 Elevation 1883 KB Formation Arbuckle Effective Pay _____ Ft. Ticket No. RR105
 Date 10-20-14 Sec. 17 Twp. 16S Range 10W County Ellsworth State Kansas
 Test Approved By Adam Nighswonger Diamond Representative Ricky Ray

Formation Test No. 2 Interval Tested from 3,300 ft. to 3,362 ft. Total Depth 3,362 ft.
 Packer Depth 3,295 ft. Size 6 3/4 in. Packer Depth _____ ft. Size _____ in.
 Packer Depth 3,300 ft. Size 6 3/4 in. Packer Depth _____ ft. Size _____ in.
 Depth of Selective Zone Set _____ ft.

Top Recorder Depth (Inside) 3,282 ft. Recorder Number 0062 Cap. 5,000 psi.
 Bottom Recorder Depth (Outside) 3,337 ft. Recorder Number 5954 Cap. 5,000 psi.
 Below Straddle Recorder Depth _____ ft. Recorder Number _____ Cap. _____ psi.

Drilling Contractor Southwind Drilling, Inc. - Rig 6 Drill Collar Length _____ ft I.D. _____ in.
 Mud Type Chemical Viscosity 50 Weight Pipe Length _____ ft I.D. _____ in.
 Weight 9.2 Water Loss 8.8 cc. Drill Pipe Length 3,267 ft I.D. 3 1/2 in.
 Chlorides 7,200 P.P.M. Test Tool Length 33 ft Tool Size 3 1/2-IF in.
 Jars: Make Sterling Serial Number 8 Anchor Length 30' perf. w/ 32' drill pipe Size 4 1/2-FH in.
 Did Well Flow? No Reversed Out No Surface Choke Size 1 in. Bottom Choke Size 5/8 in.
 Main Hole Size 7 7/8 in. Tool Joint Size 4 1/2-XH in.

Blow: 1st Open: 1/2 in. blow increasing to 8 1/4 ins. in 15 mins. No blow back during shut-in.
 2nd Open: 1/4 in. blow increasing to 9 1/2 ins. in 45 mins. No blow back during shut-in.

Recovered 62 ft. of gas in pipe
 Recovered 32 ft. of oil = .455360 bbls. (Grind out: 100%-oil) Gravity: 42 @ 60°
 Recovered 32 ft. of slightly gas & oil cut mud = .455360 bbls. (Grind out: 4%-gas; 10%-oil; 86%-mud)
 Recovered 280 ft. of gassy, muddy, oily water = 3.984400 bbls. (Grind out: 20%-gas; 30%-oil; 30%-water; 20%-mud)
 Recovered 344 ft. of TOTAL FLUID = 4.895120 bbls.

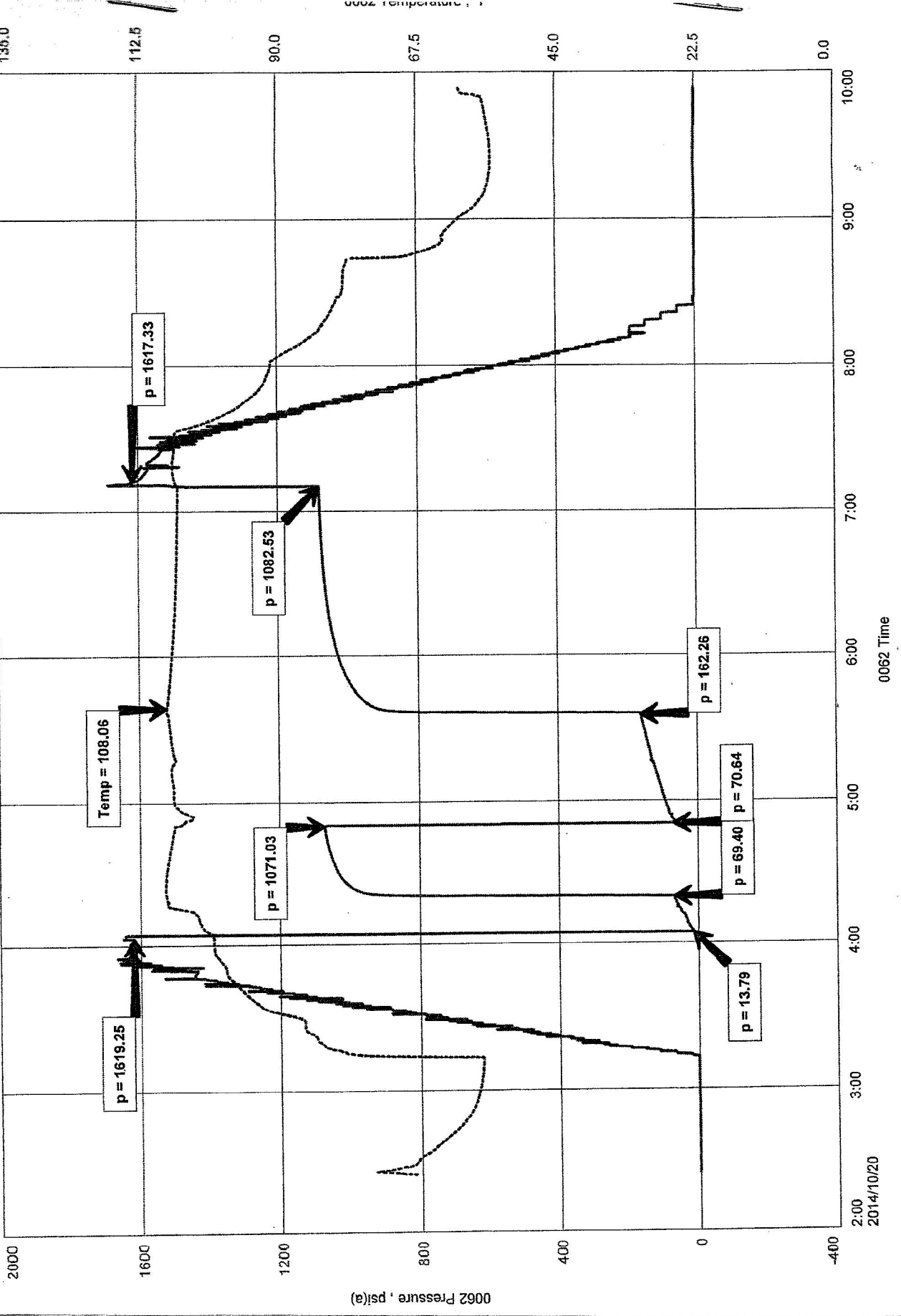
Recovered _____ ft. of
 Remarks Tool Sample Grind Out: 10%-gas; 50%-oil; 20%-water; 20%-mud (Chlorides: 18,000 Ppm PH: 7.0 RW: .60 @ 50°)

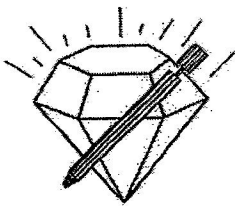
Time Set Packer(s) 4:05 A.M. Time Started off Bottom 7:05 A.M. Maximum Temperature 108°
 Initial Hydrostatic Pressure.....(A) _____ 1619 P.S.I.
 Initial Flow Period.....Minutes 15 (B) _____ 14 P.S.I. to (C) _____ 69 P.S.I.
 Initial Closed In Period.....Minutes 30 (D) _____ 1071 P.S.I.
 Final Flow Period.....Minutes 45 (E) _____ 71 P.S.I. to (F) _____ 162 P.S.I.
 Final Closed In Period.....Minutes 90 (G) _____ 1083 P.S.I.
 Final Hydrostatic Pressure.....(H) _____ 1617 P.S.I.

Stoltenberg Boor 2-17
 Formation: Dst 2 Arbuckle (3300-3362)
 Pool: Infield
 Job Number: RR106

Stoltenberg Boor 2-17

Bird Dog Oil LLC
 Dst 2 Arbuckle (3300-3362)
 Start Test Date: 2014/10/20
 Final Test Date: 2014/10/20





DIAMOND TESTING, LLC
 P.O. Box 157
HOISINGTON, KANSAS 67544
 (620) 653-7550 • (800) 542-7313
 StoltenbergBoor2-17DST3

Company Bird Dog Oil, LLC Lease & Well No. Stoltenberg - Boor No. 2-17
 Elevation 1883 KB Formation Arbuckle Effective Pay _____ Ft. Ticket No. RR106
 Date 10-20-14 Sec. 17 Twp. 16S Range 10W County Ellsworth State Kansas
 Test Approved By Adam Nighswonger Diamond Representative Ricky Ray

Formation Test No. 3 Interval Tested from 3,362 ft. to 3,367 ft. Total Depth 3,367 ft.
 Packer Depth 3,357 ft. Size 6 3/4 in. Packer Depth _____ ft. Size _____ in.
 Packer Depth 3,362 ft. Size 6 3/4 in. Packer Depth _____ ft. Size _____ in.
 Depth of Selective Zone Set _____ ft.

Top Recorder Depth (Inside) 3,343 ft. Recorder Number 0062 Cap. 5,000 psi.
 Bottom Recorder Depth (Outside) 3,364 ft. Recorder Number 11048 Cap. 5,100 psi.
 Below Straddle Recorder Depth _____ ft. Recorder Number _____ Cap. _____ psi.

Drilling Contractor Southwind Drilling, Inc. - Rig 6 Drill Collar Length _____ ft. I.D. _____ in.
 Mud Type Chemical Viscosity 64 Weight Pipe Length _____ ft. I.D. _____ in.
 Weight 9.5 Water Loss 9.2 cc. Drill Pipe Length 3,330 ft. I.D. 3 1/2 in.
 Chlorides 7,200 P.P.M. Test Tool Length 33 ft. Tool Size 3 1/2-IF in.
 Jars: Make Sterling Serial Number 8 Anchor Length 5 ft. Size 4 1/2-FH in.
 Did Well Flow? No Reversed Out No Surface Choke Size 1 in. Bottom Choke Size 5/8 in.
 Main Hole Size 7 7/8 in. Tool Joint Size 4 1/2-XH in.

Blow: 1st Open: 1/2 in. blow increasing. Off bottom of bucket in 8 mins. Weak, 1/2 in. blow back during shut-in.
 2nd Open: 3/4 in. blow increasing. Off bottom of bucket in 10 1/4 mins. Weak, 3/4 in. blow back during shut-in.

Recovered 171 ft. of gas in pipe
 Recovered 209 ft. of oil = 2.974070 bbls. (Grind out: 100%-oil) Gravity: 43 @ 60°
 Recovered 116 ft. of slightly gas & oil cut, mud cut water = 1.650680 bbls. (Grind out: 2%-gas; 6%-oil; 70%-water; 22%-mud)
 Recovered 248 ft. of water = 3.529040 bbls. (Grind out: 100%-water) Chlorides: 13,000 Ppm PH: 7.0 RW: .65 @ 66°
 Recovered 573 ft. of TOTAL FLUID = 8.153790 bbls.
 Recovered _____ ft. of _____
 Remarks Tool Sample Grind Out: 14%-oil; 83%-water; 3%-mud

Time Set Packer(s) 3:59 P.M. Time Started off Bottom 6:29 P.M. Maximum Temperature 112°
 Initial Hydrostatic Pressure.....(A) 1634 P.S.I.
 Initial Flow Period.....Minutes 15 (B) 18 P.S.I. to (C) 83 P.S.I.
 Initial Closed In Period.....Minutes 30 (D) 1084 P.S.I.
 Final Flow Period.....Minutes 45 (E) 86 P.S.I. to (F) 241 P.S.I.
 Final Closed In Period.....Minutes 60 (G) 1099 P.S.I.
 Final Hydrostatic Pressure.....(H) 1631 P.S.I.

Stoltenberg Boor 2-17

Formation: Dst 3 Arbuckle (3362-3367)
 Pool: Infield
 Job Number: RR106

