

Marc A. Downing		Geologic Report	
Consulting Petroleum Geologist		Drilling Time and Sample Log	
Operator American Warrior, Inc.		Elevation KB 2137 DF 2135 GL 2129	
Lease Harper No. 1-10		Casing Record Surface 8 5/8" @ 214' Production 5 1/2" @ 3747'	
API # 15-163-24292-0000		Field Wildcat	
Location 1882' FSL & 335' FEL		Electrical Surveys CNL/CDL, DIL, MEL	
Sec. 10	Twp. 10s	Rge. 19s	County Rooks State Kansas
Formation	Sample tops	Log Tops	Datum
Top Anhydrite	NA	1485	+652
Base Anhydrite	NA	1515	+622
Struct Comp			
Topeka	3090	3088	-951
Heebner	3303	3300	-1163
Toronto	3326	3323	-1186
LKC	3343	3340	-1203
BKC	3568	3365	-1228
Arbuckle	3650	3648	-1511
Total Depth	3748	3747	-1610
Reference Well For Structural Comparison	Tom Allan Mitchell #1	C N2 NE SE	Sec. 10-10s-19w

Drilling Contractor	Discovery Drilling, Rig #2	
Commenced	5-8-15	Completed 5-15-15
Samples Saved From	3100	To RTD
Drilling Time Kept From	3000	To RTD
Samples Examined From	3100	To RTD
Geological Supervision From	3000	To RTD

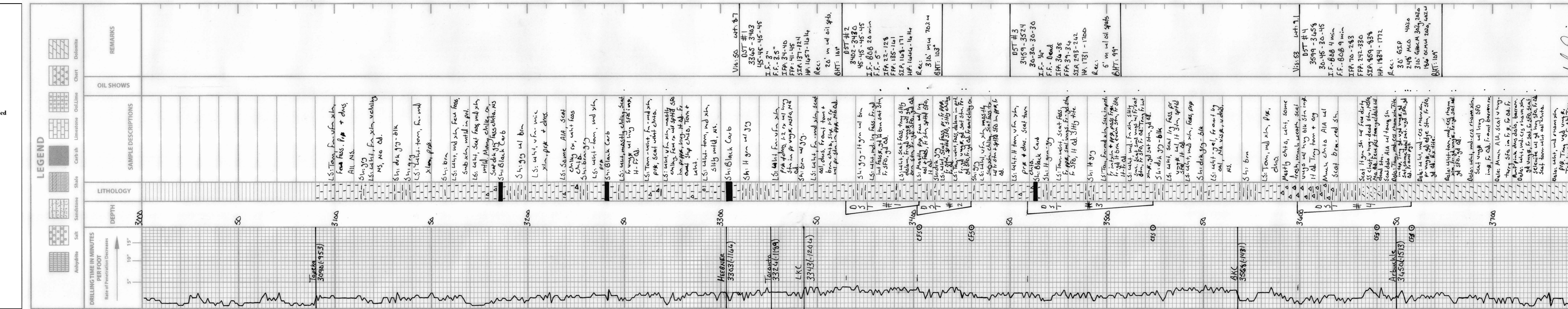
Summary and Recommendations

Due to structural position, DST recovery, and log evaluation, it was decided to set 5 1/2" production casing for completion in the Arbuckle.

Perforate: **3676-3679 (First, Squeeze if wet)**
3654-3658 (DST #1)

Respectfully Submitted,

Marc A. Downing



Marc A. Downing