

Janel Staab
Consulting Petroleum Geologist

2428 Toulon Ave
Hays, KS 67601
Phone: 785-625-4311
Cell Phone: 785-635-1660

GEOLOGIST'S WELL REPORT

COMPANY Staab Oil Company 6037
WELL Sharon #1
FIELD Wildcat
LOCATION (legal) SE-NW-SW-NW 1720' FNL 480' WL
Section 28 TWP 8S RGE 18W
(Map) 1/2 mile N. of Plainville 3 miles West
COUNTY Rooks STATE Kansas
ELEVATION: 1988 K.B., 1983 G.L.

Depths measured from Kelly Bushing

A. P. I. NUMBER 15-163-24283-00-00
GEOLOGY BY Janel Staab

PERTINENT WELL DATA

CONTRACTOR Shields Drilling Co. 5184

RIG #2 HYDRAULICS Beth 225 6x14x6c

DRILL PIPE 4 1/2" X-H COLLARS 6 1/4" 311"

CASING: SURFACE 8 5/8" @ 226' w/150 SX Common

PRODUCTION 5 1/2" @ 3500' w/150 SX Common

DRILLING FLUID: COMPANY Mud-Co / Service Mud, Inc

TYPE: Chemical ^{Jason Whiting}
Gary Schmidtberger

REMARKS: Full Service

DRILL STEM TESTS: COMPANY Trilobite Testing Inc.

NUMBER OF TESTS 2

ELECTIC LOGS: COMPANY Pioneer Energy Services

DETAIL (5") 2850' - RTD

TYPE DI, CompN-D, Micro

DRILLING TIME FROM 2875' TO 3500 - RTD

SAMPLE TIME FROM 2880' TO 3500 - RTD

SUPERVISION FROM 2880' TO 3500 RTD

VERTICAL DEVIATION _____

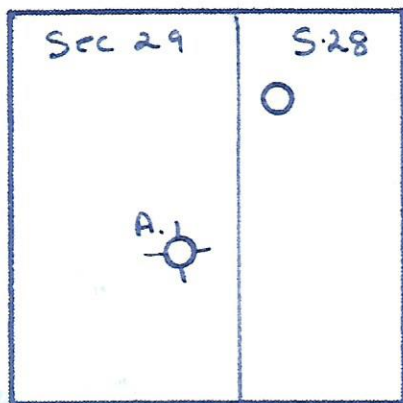
PLUGGING REPORT _____

RESERVE PIT _____

FORMATION TOPS & STRUCTURAL GEO

% oil

rud



REFERRED TO:

A: Graves. Henderson #
Sec 29 T8 R18

- B: _____
- C: _____
- D: _____
- E: _____

STRATIGRAPHIC MARKERS	SUBJECT WELL			STRUCTURAL POSITION		
	SAMPLE	E. LOG	DATUM	A	B	C

Anhydrite	1407	1408	+580	+565		
Base	1448	1448	+540			
Topeka	2919	2918	-930	-940		
Heeb Sh	3125	3125	-1137	-1149		
Toronto	3150	3147	-1159	-1173		
Lansing	3169	3167	-1179	-1192		
B.K.C.	3385	3384	-1396	-1415		
Arbuckle	3414	3412	-1424	-		
T.D.	3500	3500	-1512			

*Structural position of subject well as compared to refer

6

7

The Sharon #1 in Sec 28 T8 R18 Co. Kansas was drilled starting Feb 26th reached T.O on March 4, 2015 using Sh Drilling Co. rig #2

3-D seismic survey indicated a structural high compared to dry hole location

Oil shows were encountered starting in the Plattsmith thru the Arbuckle 2 DST were ran with #1 having results. Logs were ran and support sample findings and reinforced DST

Due to a positive DST and structural high compared to other locations, and with results of the 3 logs, product pipe was set on March 5, 2014

Paul Jacob

Books

2015 and

fields

s near

tung

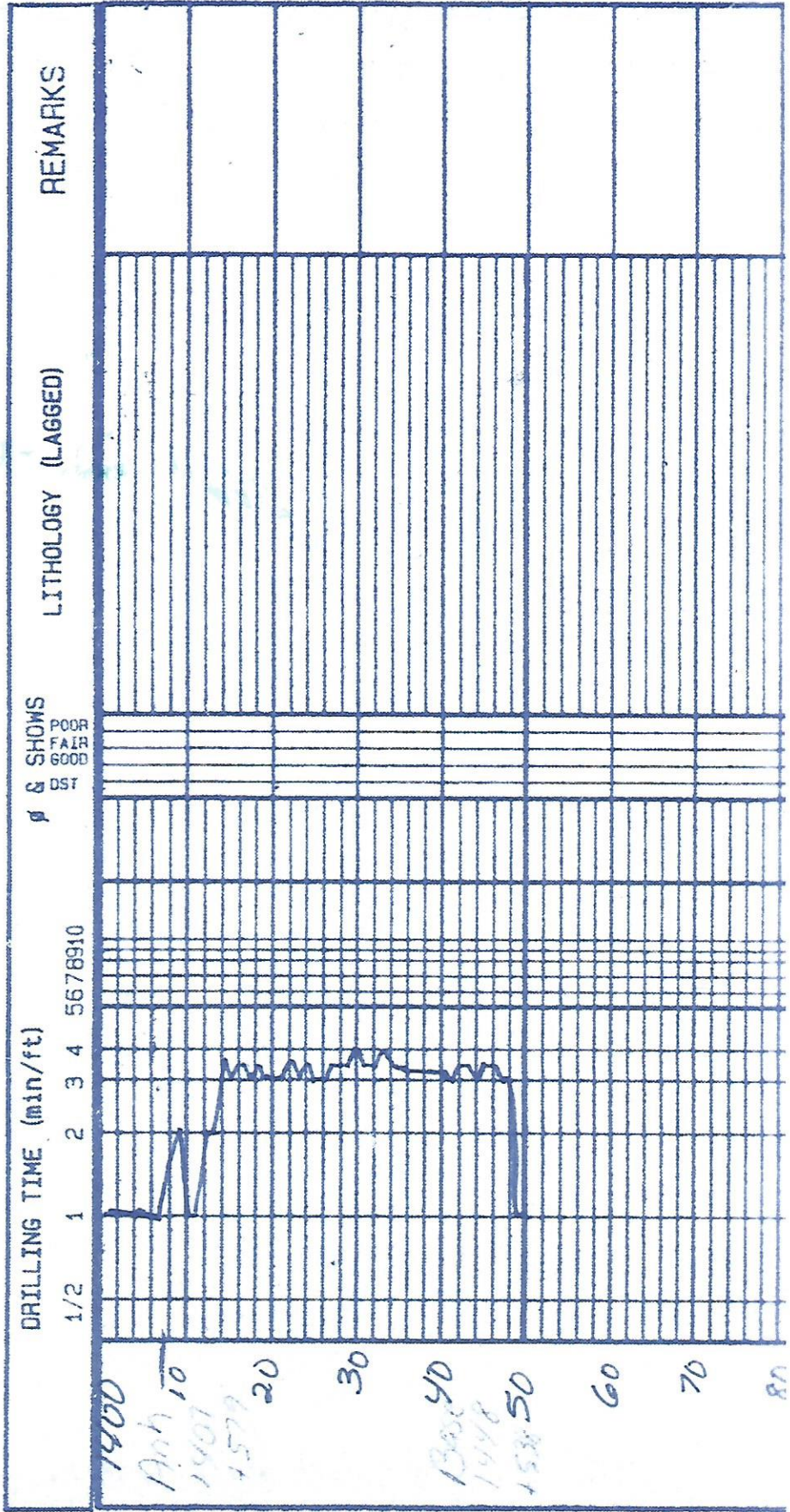
positive

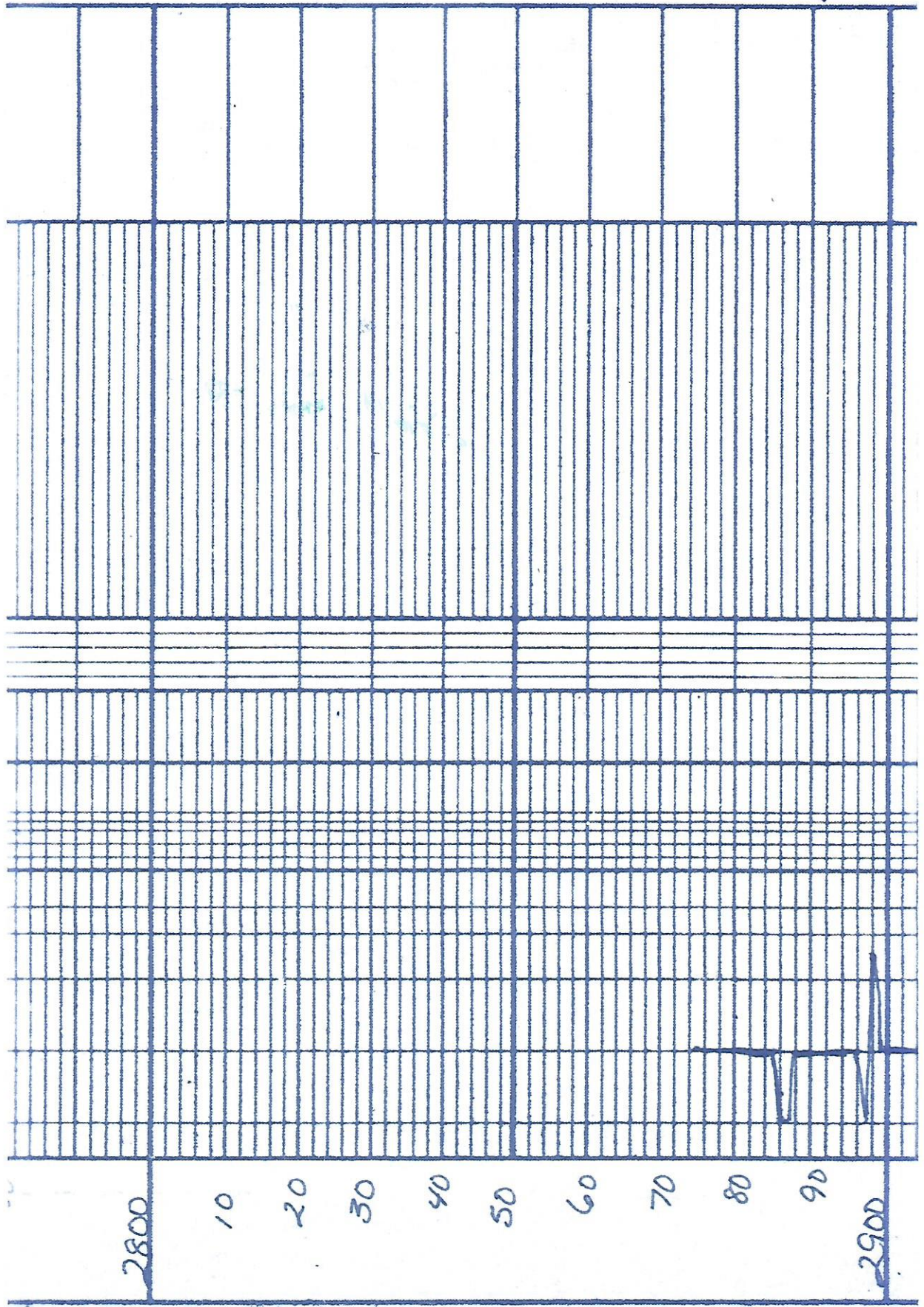
ted.

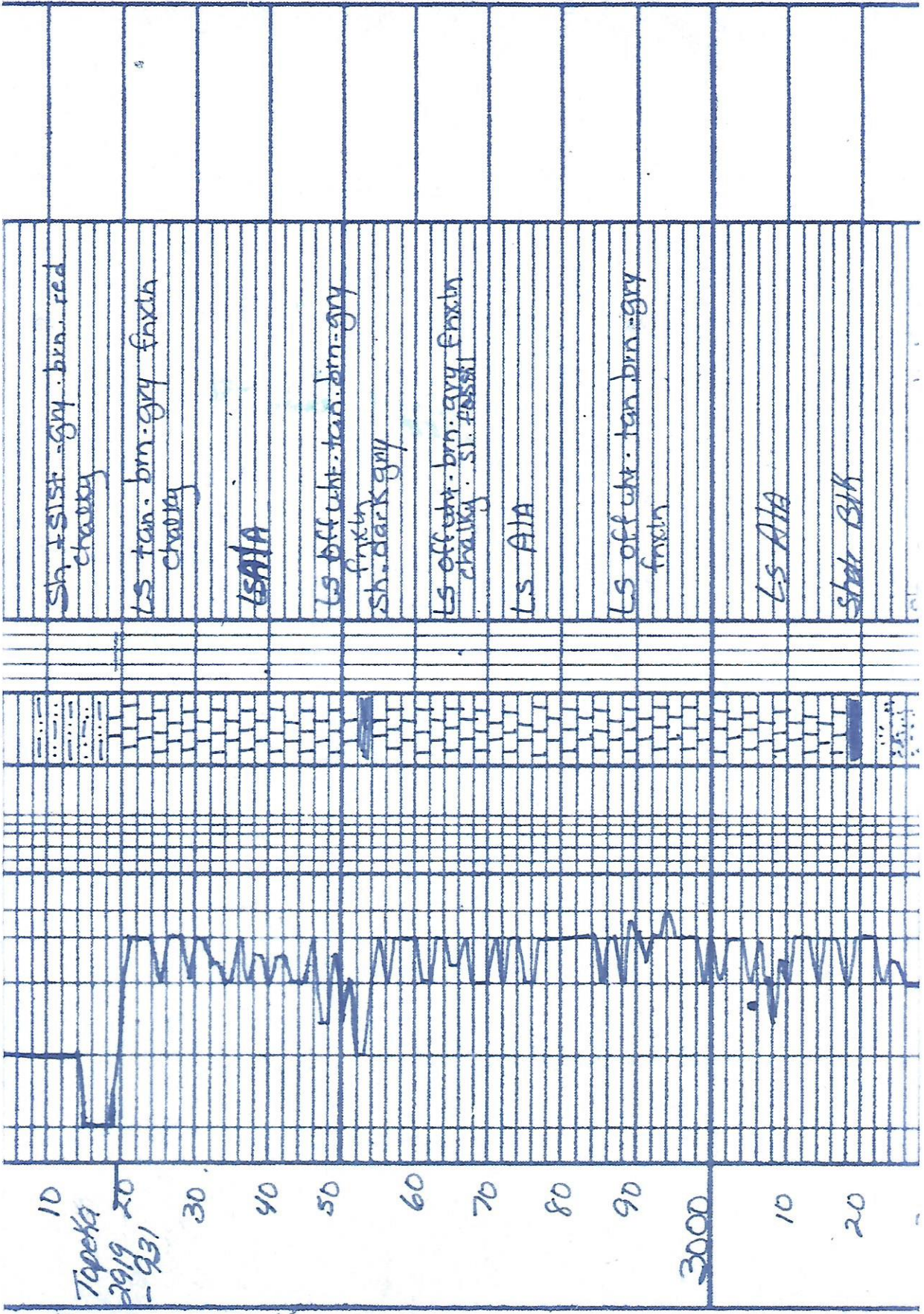
actually

long

on







10
Topokta
2019 20
- 931

30

40

50

60

70

80

90

3000

10

20

Sh + silt - gry - brn - red
cherty

LS tan - brn - gry fexin
cherty

LSAIA

LS off wht - tan - brn - gry
fexin
sh. dark gry

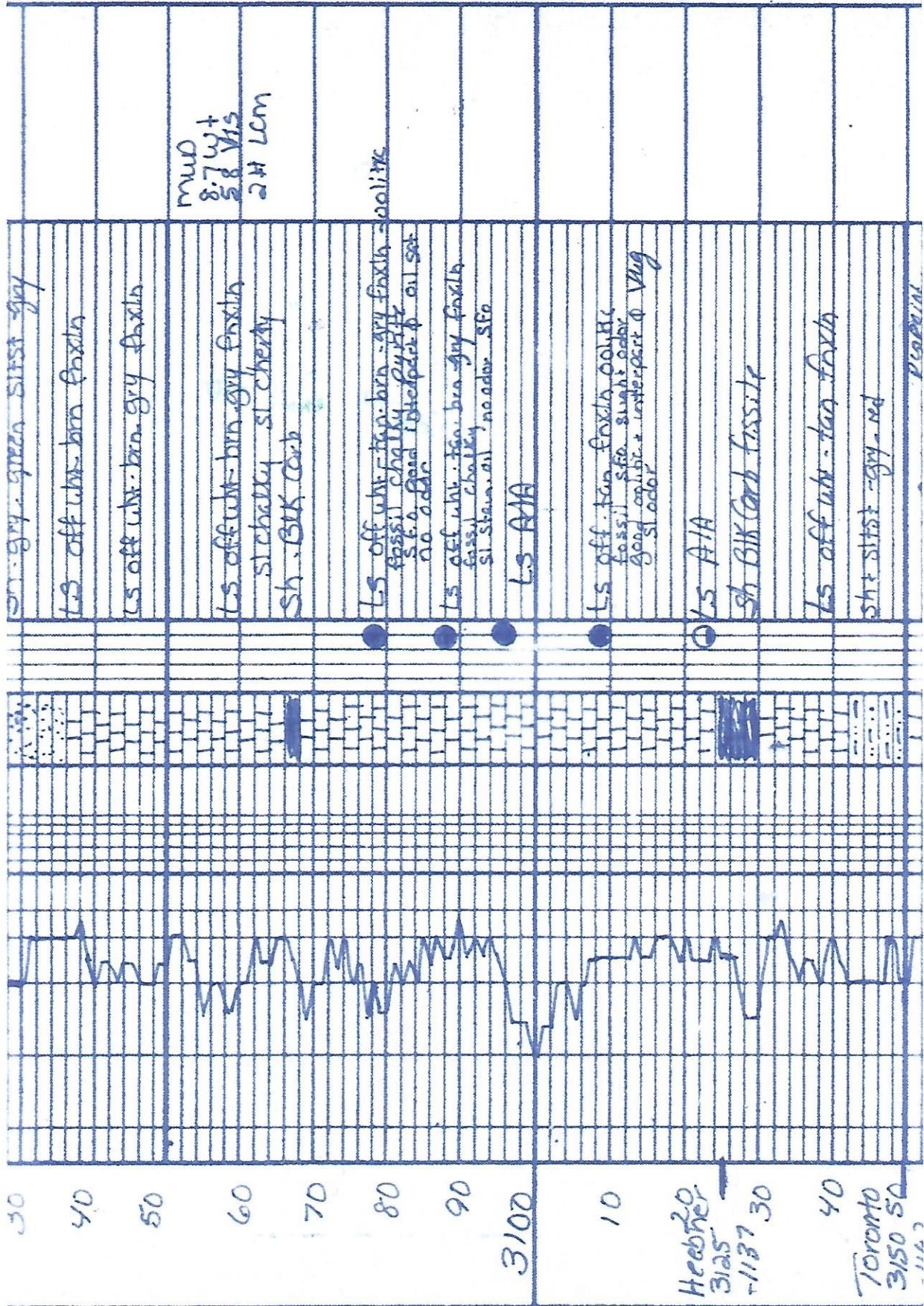
LS off wht - brn - gry fexin
cherty sl. #5581

LS AIA

LS off wht - tan - brn - gry
fexin

LS AIA

Sh + Btk



off-gry-green siltst-gry

LS off wht-brn fexln

LS off wht-brn-gry fexln

mud
8.7 wt
2.8 Vis
2# Lcm

LS off wht-brn-gry fexln
silt cherty
Sh. Bk Carb

LS off wht-tan-brn-gry fexln
fossil cherty
S. a. good interpart. oil sat
no odor

LS off wht-tan-brn-gry fexln
fossil cherty
S. a. good interpart. oil sat
no odor

LS AIA

LS off tan fexln
fossil siltst
good carb. + interpart. oil sat
S. a. odor

LS AIA

Sh Bk Carb fissile

LS off wht-tan fexln

siltst - gry-red

pearl

30

40

50

60

70

80

90

3100

10

Hebner
3125

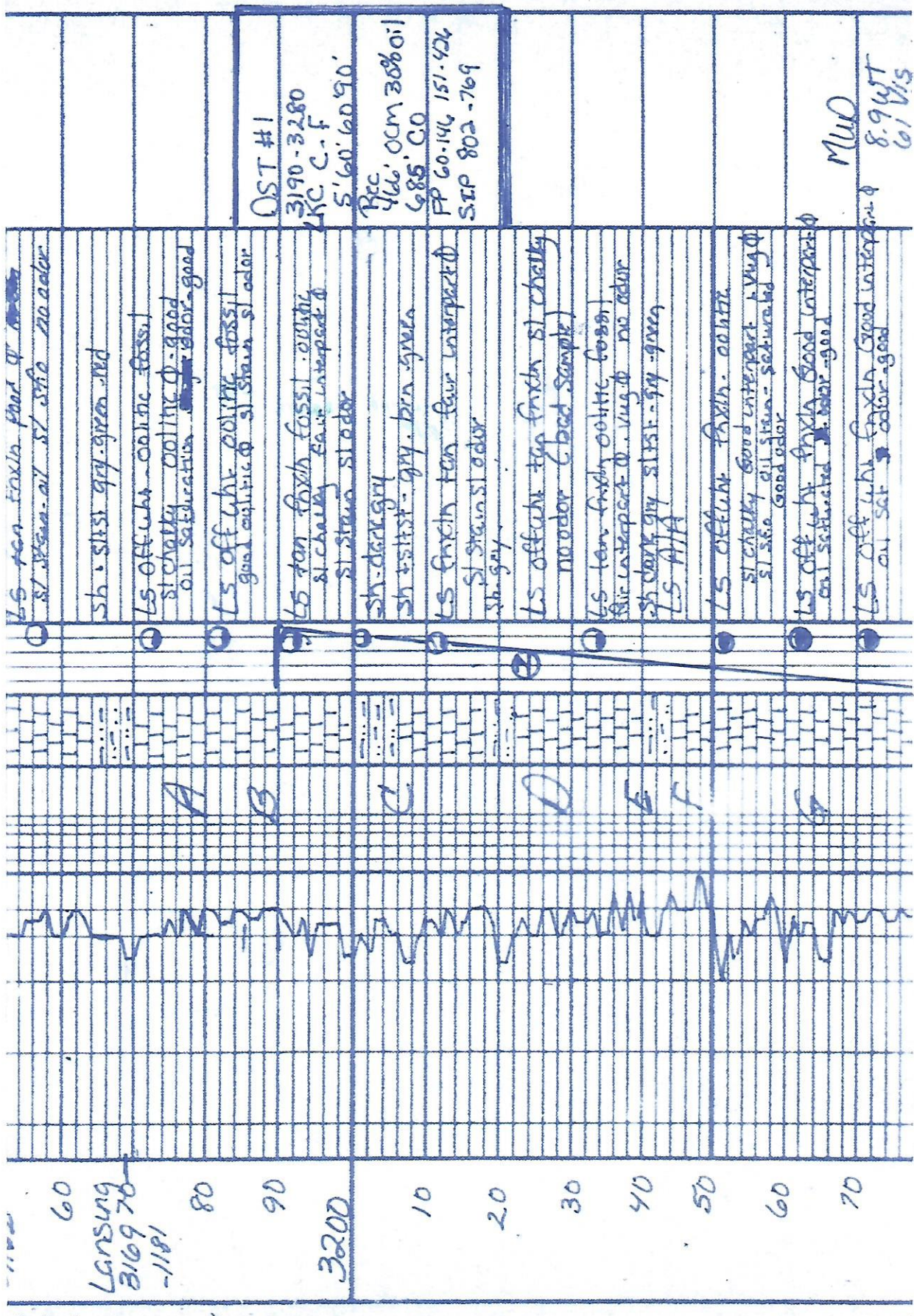
-1137

30

40

Toronto
3150

50

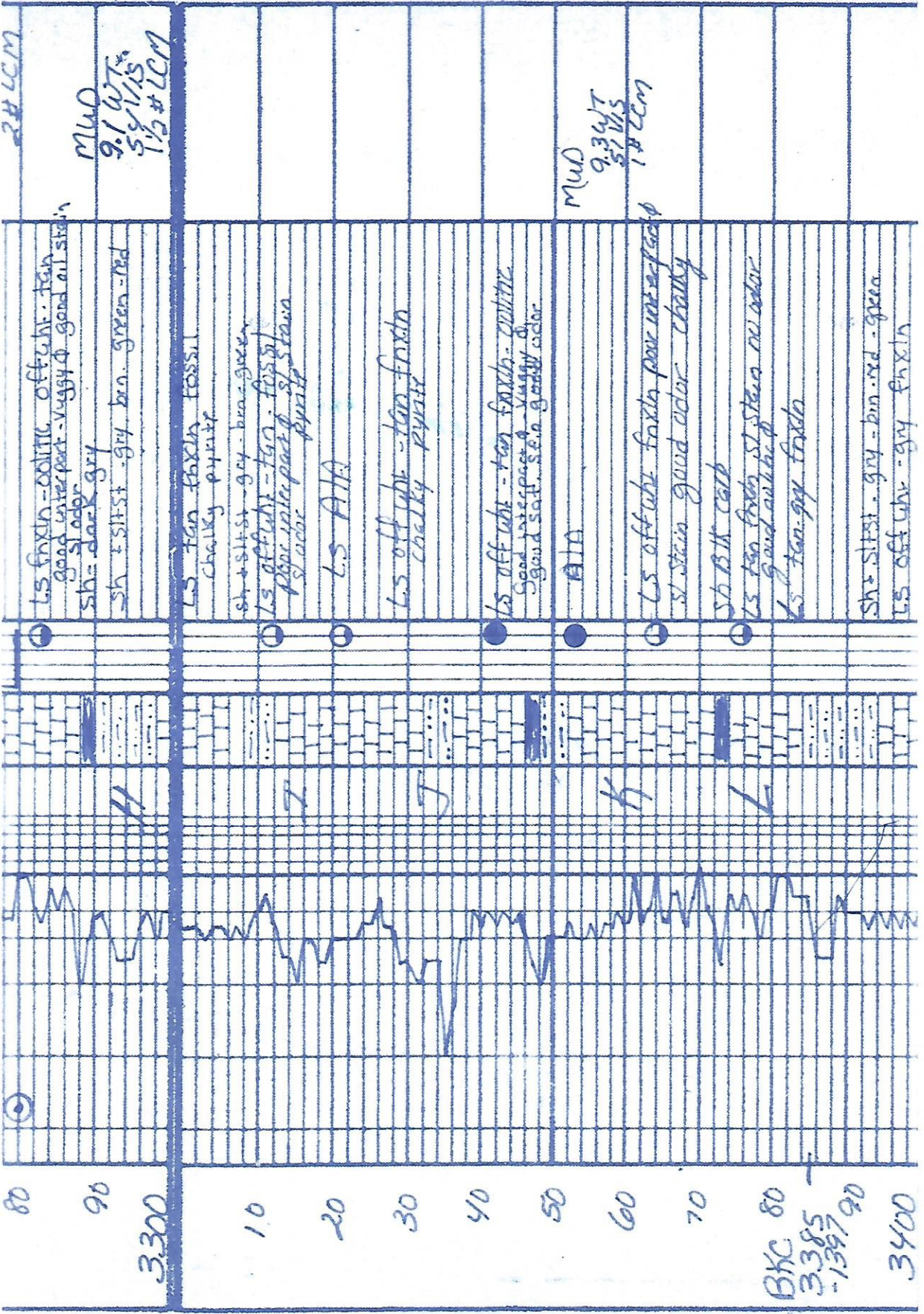


OST #1
 3190-3280
 K.C. C-F
 5'60'6090''
 Rec 466' OCM 30860il
 685 CO
 FP 60-146 151-424
 SEP 802-769

MUD
 8.9 WT
 61 V/S

60
 Lansing
 316970-1181
 80
 90
 3200

10
 20
 30
 40
 50
 60
 70



2# LCM

MUD
9.1 WT%
5% V/S
1 1/2 # LCM

LS fresh - off white - tan
good interpart - vuggy & good oil stain
sh = dark grey
sh + siltst - grey - brn - green - red

LS tan fresh fossil
cherty pyritic

sh + siltst - grey - brn - green
LS off white - tan - fossil
fine interpart & st. stain
sh. odor
pyrite

LS AIA

LS off white - tan fresh
cherty pyrite

LS off white - tan fresh - cherty
good contact & vuggy &
good salt s.e. good odor

AIA

LS off white fresh - poor interpart
st. stain good odor cherty

sh Bk carb

LS tan fresh st. stain no odor
good interpart

LS tan-grey fresh

sh + siltst - grey - brn - red - green
LS off white - grey - fresh

MUD
9.3 WT
5% V/S
1 # LCM

80

90

3300

10

20

30

40

50

60

70

BXC 80

3385

1397

90

3400

