

Janel Staab
Consulting Petroleum Geologist

2428 Toulon Ave
Hays, KS 67601
Phone: 785-625-4311
Cell Phone: 785-635-1660

GEOLOGIST'S WELL REPORT

COMPANY Staab Oil Company 6037
WELL Staab Shutts
FIELD Bemis Shutts
LOCATION (legal) SE-NE-NW-SW ^{2300' FSL} 1190' FWL
Section 5 TWP 12S RGE 17W
(Map) 2 1/2 mi N of
Buckeye and Toulon Intersection
COUNTY Ellis STATE Kansas
ELEVATION: 2140 K.B. 2135 G.L.

Depths measured from Kelly Bushing

A. P. I. NUMBER 15-051-26775-00-00
GEOLOGY BY Janel Staab

PERTINENT WELL DATA

CONTRACTOR Shields Drilling Co. 5184
RIG 2 HYDRAULICS Beth 225 6x14x40
DRILL PIPE 4 1/2 X-H COLLARS 6/4" 311"
CASING: SURFACE 8 5/8 @ 212' w/150 SX Common
PRODUCTION 5 1/2 @ 3700' w/150 SX Common
DRILLING FLUID: COMPANY Mud-Co/Services Mud Inc
TYPE: Chemical
REMARKS: Full Service
DRILL STEM TESTS: COMPANY Trilobite Testing Inc
NUMBER OF TESTS 2
ELECTIC LOGS: COMPANY Pioneer Energy Services
DETAIL (5") 3000 - RTD
TYPE DI, Comp N-D, Micro
DRILLING TIME FROM 3000 TO 3700
SAMPLE TIME FROM 3050 TO 3700
SUPERVISION FROM 3050 TO 3700
VERTICAL DEVIATION .5" @ 221'
PLUGGING REPORT _____
RESERVE PIT _____

DRILL STEM TESTS

NO	INTERVAL	IFP/TIME	ISIP/TIME	FFP/TIME	FSIP/TIME	IHP/FHP	RECOVERY
1	3376-3420 LXCCF	31.32 5	423 60	33.34 10	- ↑	1704.52 1665.88	S mud
2	3590-3635 Arbuckle	40.54 5	422 60	56.101 60	337 90	1822-1791	30' mw 110' SOCM 10% 15' SLOWCO S
3							
4							
5							
6							
7							
8							

MUD RECORD

CHK	DEPTH	WT	VIS	FIL	CHL	YP	LCM
1	212	-					
2	1412	9.4	30	NC	28000	-	Nil
3	2565	9.0	27	NC	70000	-	Nil
4	3097	8.8	53	6.0	3800	21	3
5	3420	9.3	57	5.8	4100	31	2
6	3660	9.5	55	6.0	3600	29	2
7							
8							
9							
10							
11							

BIT RECORD

NO	SIZE	MAKE	TYPE	DEPTH	FEET	HOURS
1	12 1/4"	Reed	Mill Tooth	212'	212'	7
2	7 7/8"	Reed	S.52	3700'	3488'	89 1/4
3						
4						
5						

The Staab. Shuttis was drilled using Shie
Location was Sec 5 T12 R17 in Ellis Co
on April 8, 2015 and reaching TD on Ap

3-D Seismic indicated a struct
compared to dry holes near location

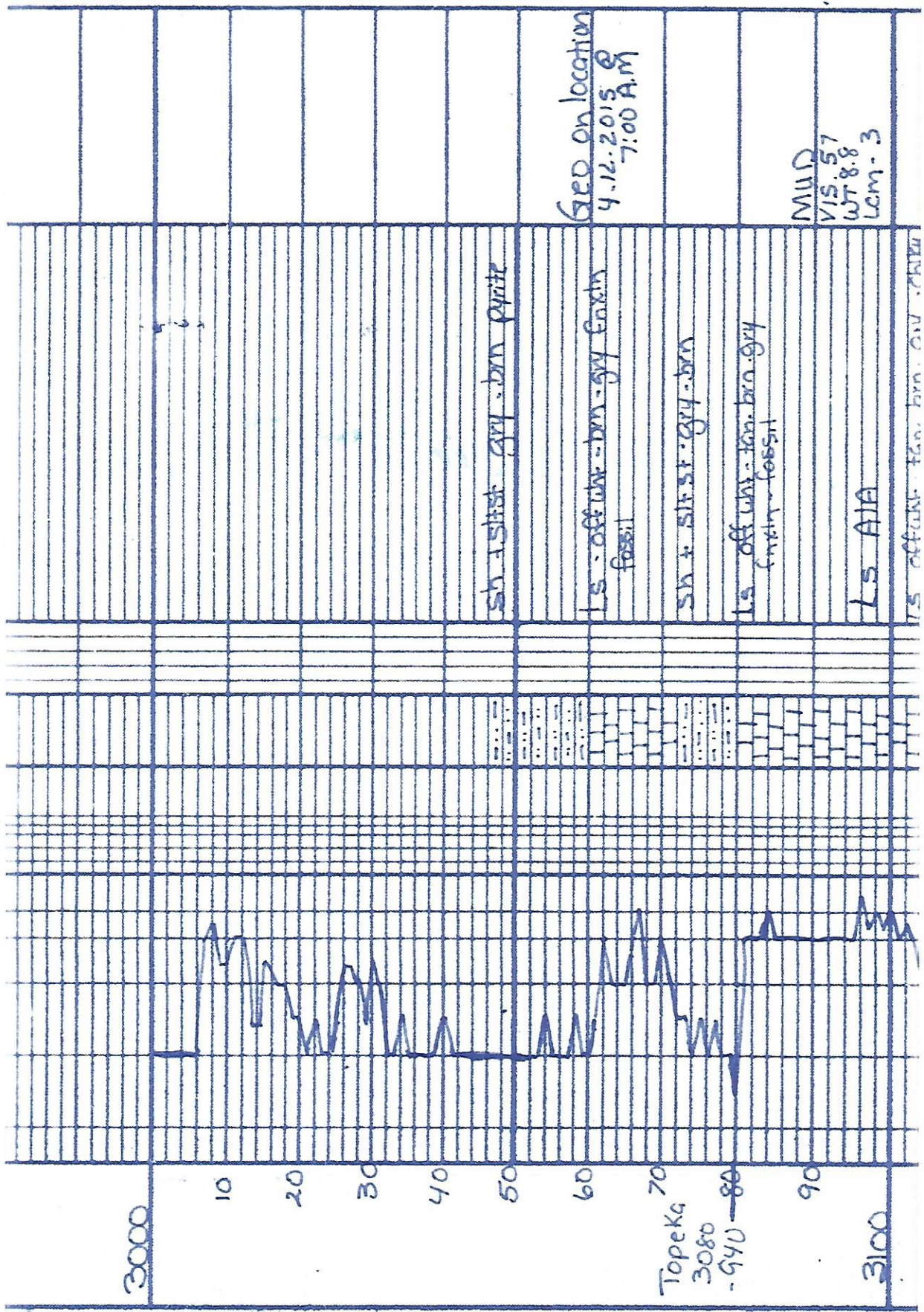
Oil shows were encountered st
with a trace in the Plattsmith, the Toro
and the LKC C.D. G., and good shows in t
Arbuckle. 2 DST's were ran with both
in negative results Logs were ran.

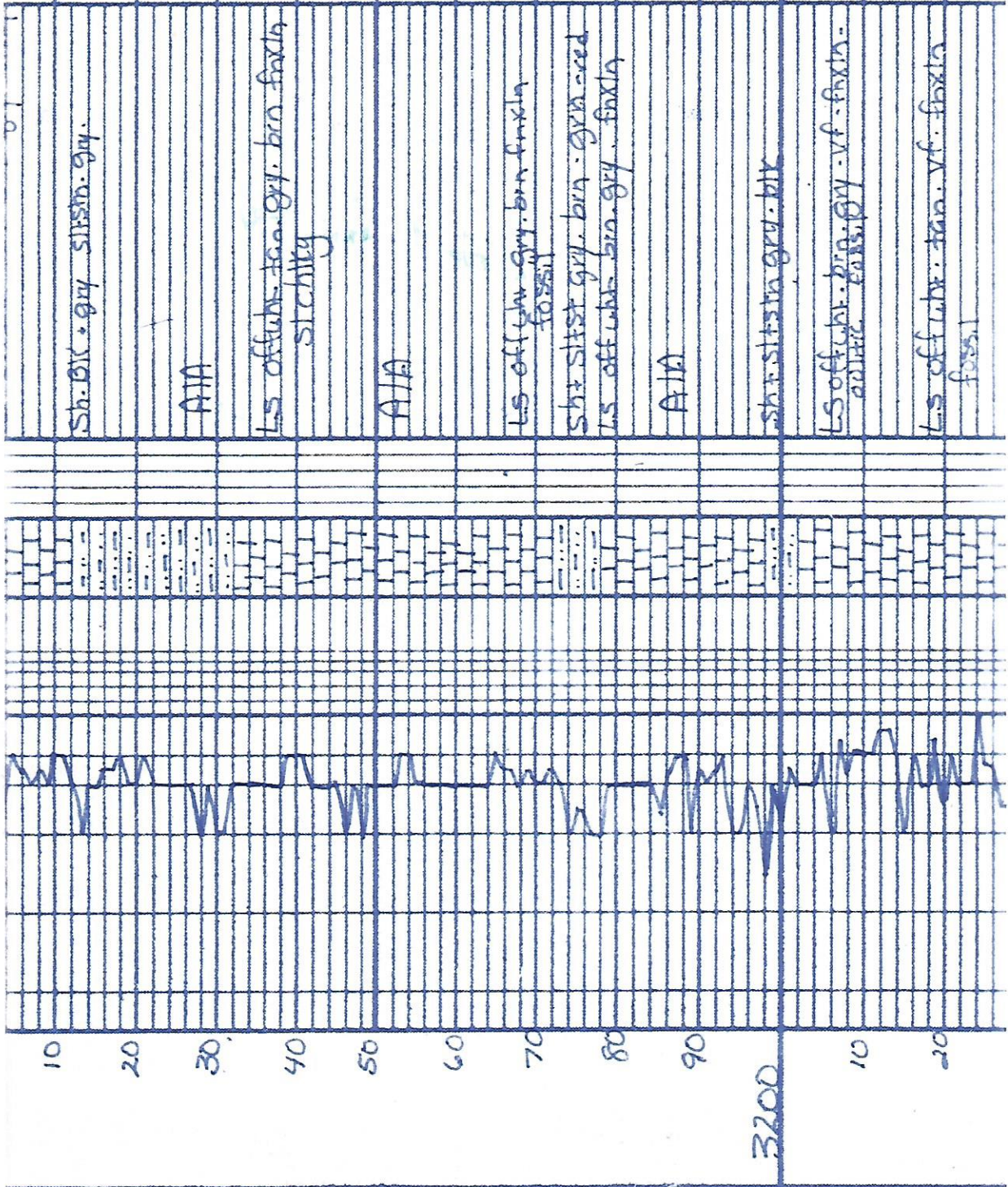
Due to negative results from DST
well was P+A.

Jan Saal

1
D E

red well.





Sh. blk. + gray siltstn. + gray.

AIA

L.S. off-white. tan. gray. brn. faxtn.
stichitgy

AIA

L.S. off-white. gray. brn. faxtn.
fossil

Sh. + siltst. gray. brn. gray. faxtn.

AIA

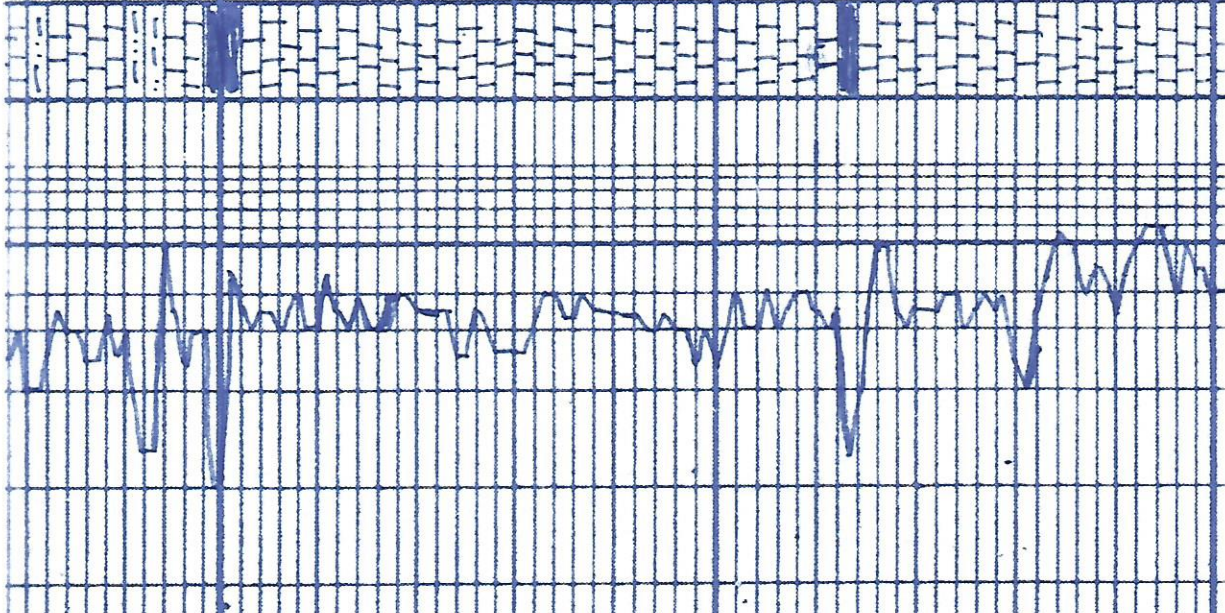
Sh. + siltstn. gray. blk.

L.S. off-white. brn. gray. vf. faxtn.
fossil

L.S. off-white. tan. vf. faxtn.
fossil

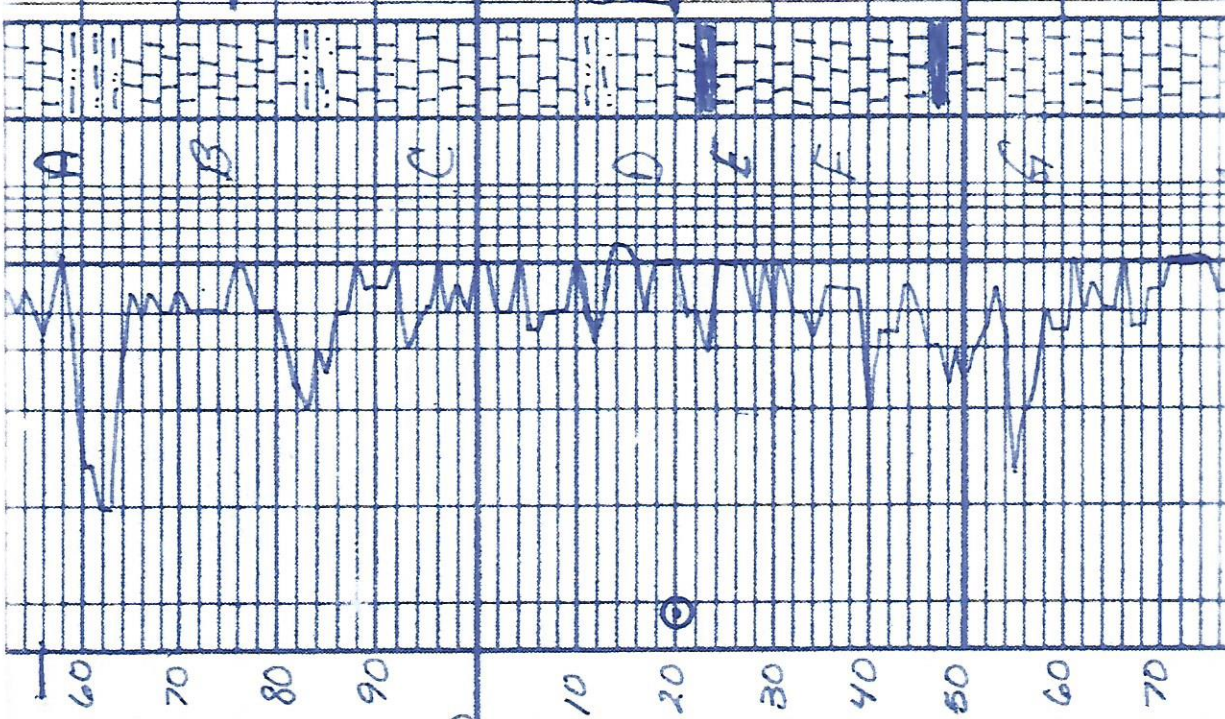
10 20 30 40 50 60 70 80 90 3200 10 20

80
40
60
70
80
90
3300
Heebner
3312 10
-1172
20
Toronto
3331
-1191
30
40
50
LKC



sh. st. st. grey. brn. red
LS off wht. tan. brn. foxin
fossil stichity p/rite
wh. st. st. grey. brn. red
sh. BIK. fossil
LS off wht. grey. foxin. chitky
LS off wht. tan. foxin. chitky
v. grey. fossil. sil. sh. oil. stain
no odor
LS off wht. tan. foxin. chitky
A/A LS off wht. tan. foxin. oil. brn
pear. & no odor. sil. stain
A/A
LS off wht. foxin.
sh. BIK carb. fossil
LS off wht. tan. foxin. sil. odor
LS off wht. tan. foxin. stichity
sil. stain. oil. stain. when crushed
good odor
LS off wht. foxin. oil. stained
pear. infested. & no odor
LS off wht. A/A

3354
-1216



Sh. silst. gray tan-red green fossil

LS off white tan fossil no odor

LS off white fossil good odor
sh. silst. gray tan green

LS off white greenish fossil fair
interpart. of sand odor good saturation
color S.T.O. and saturation

LS off white tan fossil pale
interpart. of sl. odor sl. stain

LS off white tan gray fossil fossil
color sl. chalky fair interpart. of
sl. no odor fluorescent when
over-brushed

LS off white gray fossil fossil
pale interpart. of sl. stain no odor
sl. chalky no odor

LS off white tan fossil color
sl. chalky fair interpart. of
sl. stain no odor

LS off white gray fossil fossil
pale interpart. of sl. stain no odor
sl. chalky no odor

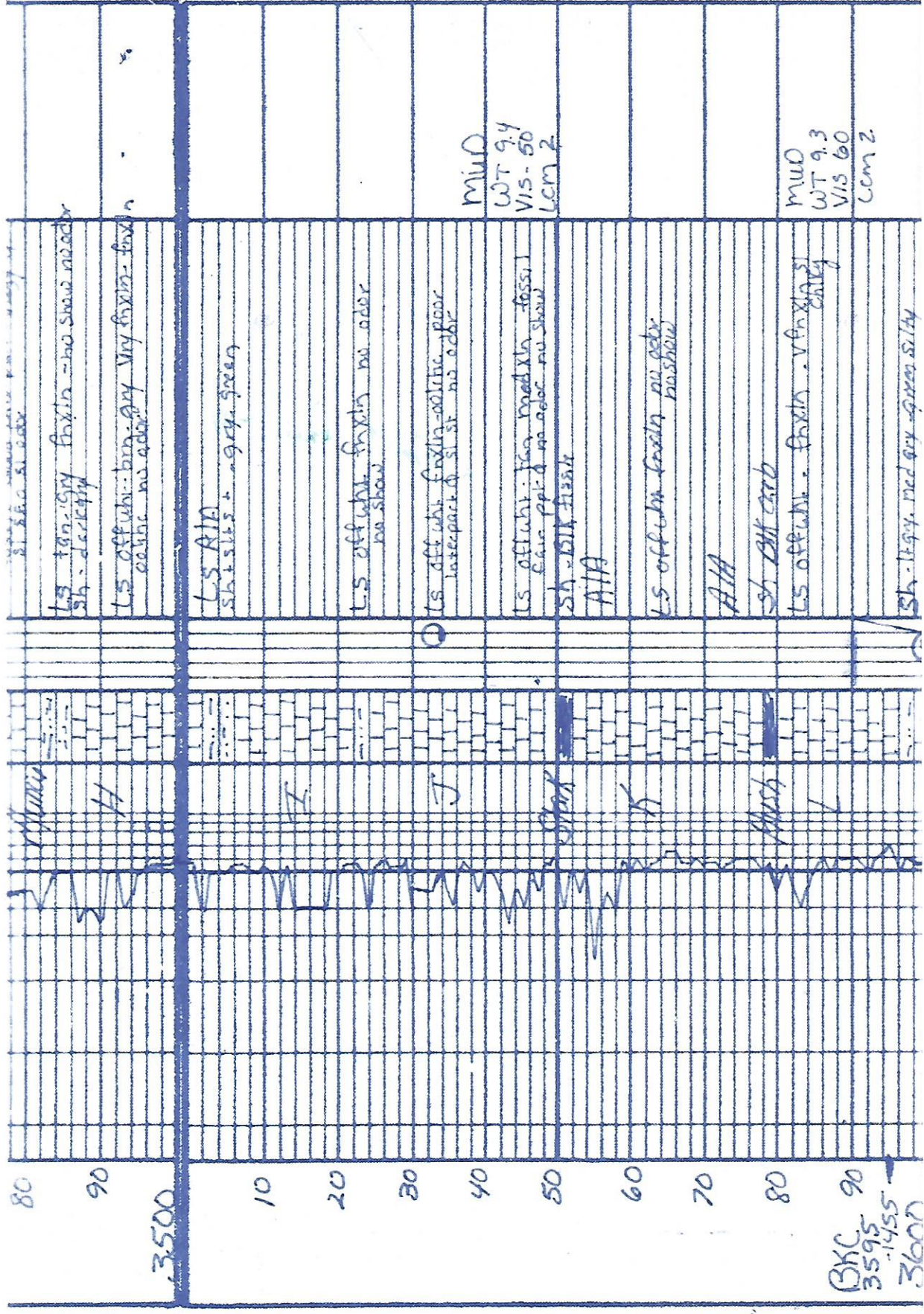
LS off white tan fossil color
sl. chalky fair interpart. of
sl. stain no odor

LS off white tan fossil color
sl. chalky fair interpart. of
sl. stain no odor

MUD
WT 9.3
VLS 5.3
Lcm. 2

DST #1
3376-3420
Lans C-D
S-60 ~10 -↑
FP 31.32 33.39

SIP 423
Rcc 5' mud



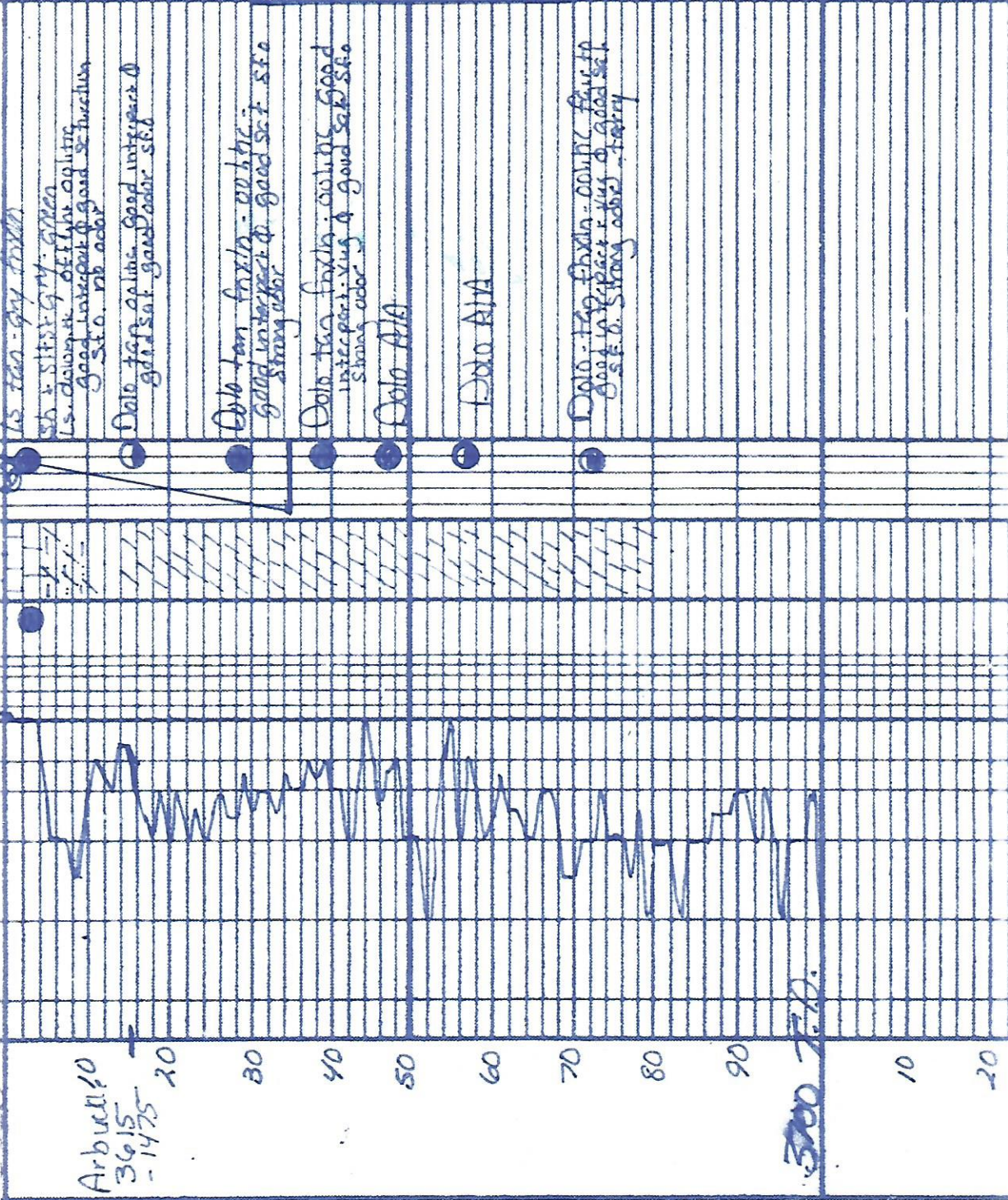
MUD
WT 9.4
VIS - 50
LCM 2

MUD
WT 9.3
VIS 60
LCM 2

BXC
3595
-1455
3600

Mud
WT 9.4
Vis 56
temp 2

UST #2
3590-3635
Arbutot
5-60-60-90
Rec. 30' MW
110' SOCM
10% 0.1
15' SW MCO
50% 0.1
FP 40.54 56.101
S.I.P 422-537



Arbutot
3615
- 1475

500