

Max R. Lovely

GEOLOGIST'S REPORT

DRILLING TIME AND SAMPLE LOG

COMPANY Ritchie Exploration

LEASE #1 Taylor 9B

FIELD Wildcat

LOCATION S/2 SE NW

SEC 9 T13 R13

COUNTY Logan STATE KS

CONTRACTOR WW #8

SPUD 2-26-15 COMP 3-8-15

RID 4/15 LTD 4/15

MUD UP 333 TYPE Mud Chem

FORMATION TOOLS AND STRUCTURAL POSITION

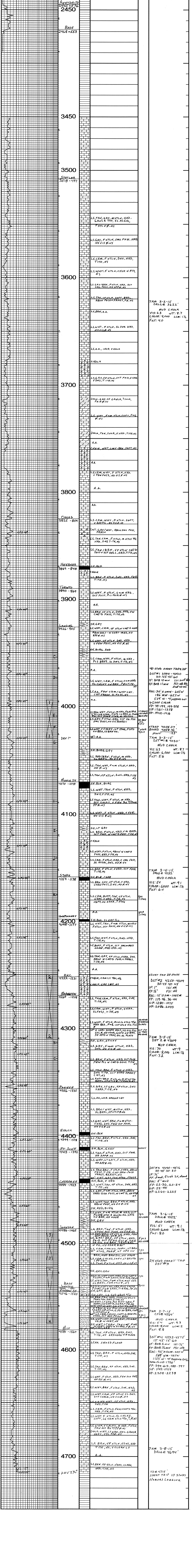
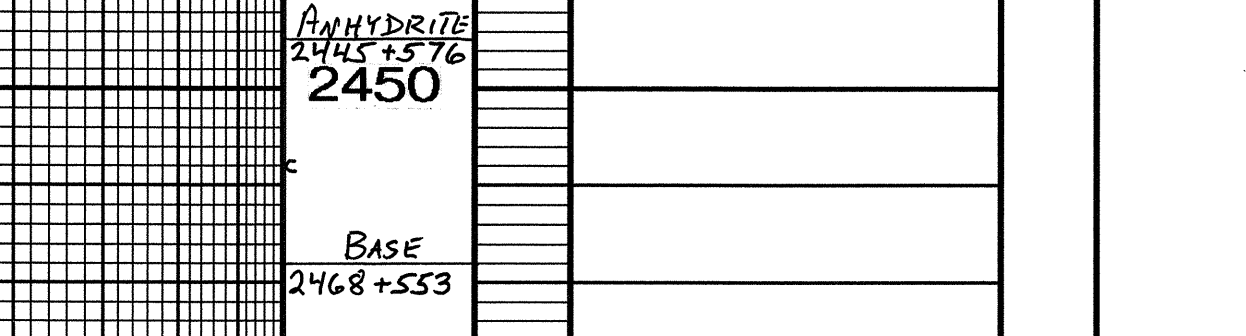
FORMATION TOOLS AND STRUCTURAL POSITION

FORMATION	SWALE	ELECTRIC	SUR-SEA	STRUCTURAL POSITION
Andover	2445	2446	477	576
Essex	2446	2447	477	576
Ward	2447	2448	477	576
Ward	2448	2449	477	576
Ward	2449	2450	477	576
Ward	2450	2451	477	576
Ward	2451	2452	477	576
Ward	2452	2453	477	576
Ward	2453	2454	477	576
Ward	2454	2455	477	576
Ward	2455	2456	477	576
Ward	2456	2457	477	576
Ward	2457	2458	477	576
Ward	2458	2459	477	576
Ward	2459	2460	477	576
Ward	2460	2461	477	576
Ward	2461	2462	477	576
Ward	2462	2463	477	576
Ward	2463	2464	477	576
Ward	2464	2465	477	576
Ward	2465	2466	477	576
Ward	2466	2467	477	576
Ward	2467	2468	477	576
Ward	2468	2469	477	576
Ward	2469	2470	477	576
Ward	2470	2471	477	576
Ward	2471	2472	477	576
Ward	2472	2473	477	576
Ward	2473	2474	477	576
Ward	2474	2475	477	576
Ward	2475	2476	477	576
Ward	2476	2477	477	576
Ward	2477	2478	477	576
Ward	2478	2479	477	576
Ward	2479	2480	477	576
Ward	2480	2481	477	576
Ward	2481	2482	477	576
Ward	2482	2483	477	576
Ward	2483	2484	477	576
Ward	2484	2485	477	576
Ward	2485	2486	477	576
Ward	2486	2487	477	576
Ward	2487	2488	477	576
Ward	2488	2489	477	576
Ward	2489	2490	477	576
Ward	2490	2491	477	576
Ward	2491	2492	477	576
Ward	2492	2493	477	576
Ward	2493	2494	477	576
Ward	2494	2495	477	576
Ward	2495	2496	477	576
Ward	2496	2497	477	576
Ward	2497	2498	477	576
Ward	2498	2499	477	576
Ward	2499	2500	477	576

FORMATION	SWALE	ELECTRIC	SUR-SEA	STRUCTURAL POSITION
Andover	2445	2446	477	576
Essex	2446	2447	477	576
Ward	2447	2448	477	576
Ward	2448	2449	477	576
Ward	2449	2450	477	576
Ward	2450	2451	477	576
Ward	2451	2452	477	576
Ward	2452	2453	477	576
Ward	2453	2454	477	576
Ward	2454	2455	477	576
Ward	2455	2456	477	576
Ward	2456	2457	477	576
Ward	2457	2458	477	576
Ward	2458	2459	477	576
Ward	2459	2460	477	576
Ward	2460	2461	477	576
Ward	2461	2462	477	576
Ward	2462	2463	477	576
Ward	2463	2464	477	576
Ward	2464	2465	477	576
Ward	2465	2466	477	576
Ward	2466	2467	477	576
Ward	2467	2468	477	576
Ward	2468	2469	477	576
Ward	2469	2470	477	576
Ward	2470	2471	477	576
Ward	2471	2472	477	576
Ward	2472	2473	477	576
Ward	2473	2474	477	576
Ward	2474	2475	477	576
Ward	2475	2476	477	576
Ward	2476	2477	477	576
Ward	2477	2478	477	576
Ward	2478	2479	477	576
Ward	2479	2480	477	576
Ward	2480	2481	477	576
Ward	2481	2482	477	576
Ward	2482	2483	477	576
Ward	2483	2484	477	576
Ward	2484	2485	477	576
Ward	2485	2486	477	576
Ward	2486	2487	477	576
Ward	2487	2488	477	576
Ward	2488	2489	477	576
Ward	2489	2490	477	576
Ward	2490	2491	477	576
Ward	2491	2492	477	576
Ward	2492	2493	477	576
Ward	2493	2494	477	576
Ward	2494	2495	477	576
Ward	2495	2496	477	576
Ward	2496	2497	477	576
Ward	2497	2498	477	576
Ward	2498	2499	477	576
Ward	2499	2500	477	576

REMARKS

LEGEND



LOG 7710

7