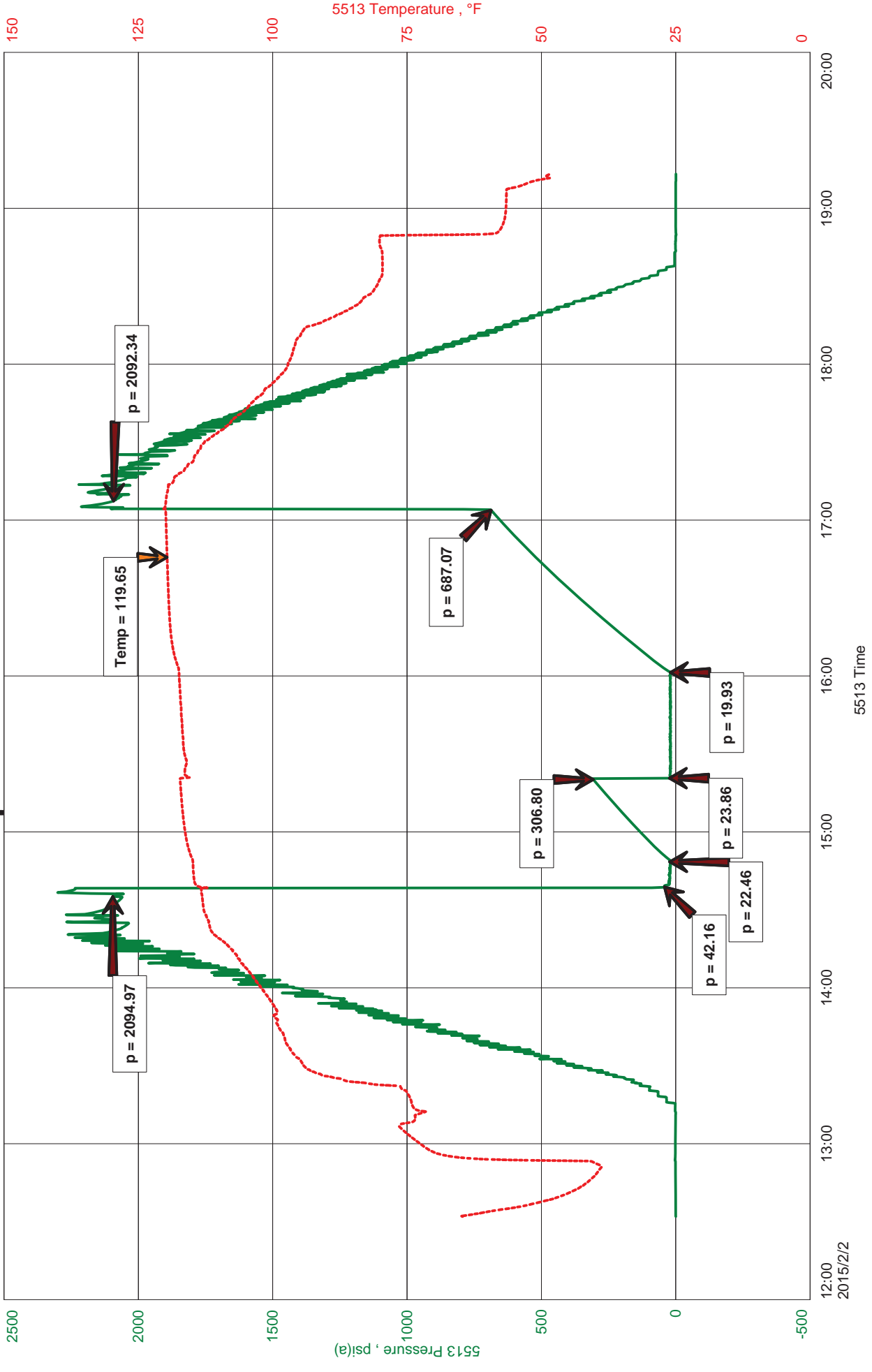


LB Exploration, Inc
DST #2 Marm-Cong 4374-4455
Start Test Date: 2015/02/02
Final Test Date: 2015/02/02

Hopkins Ranch 31 #1
Formation: Marmaton-Conglomerate
Pool: Wildcat
Job Number: K221

Hopkins Ranch 31 #1





JASON MCLEMORE

CELL # 620-617-0527

General Information

Company Name	LB Exploration, Inc	Job Number	K221
Contact	Steve Petermann	Representative	Jason McLemore
Well Name	Hopkins Ranch 31 #1	Well Operator	LB Exploration, Inc
Unique Well ID	DST #2 Marm-Cong 4374-4455	Prepared By	Jason McLemore
Surface Location	31-32s-13w-Barber	Qualified By	Steve Petermann
Field	Palmer	Test Unit	6
Well Type	Vertical		

Test Information

Test Type	Drill Stem Test	Representative	Jason McLemore
Formation	Marmaton-Conglomerate	Well Operator	LB Exploration, Inc
Well Fluid Type	01 Oil	Report Date	2015/02/02
Test Purpose (AEUB)	Initial Test	Prepared By	Jason McLemore

Start Test Date	2015/02/02	Start Test Time	12:32:00
Final Test Date	2015/02/02	Final Test Time	19:14:00

Test Results

RECOVERED:

20	Drilling Mud
20	TOTAL FLUID

1200' Gas In Pipe



DIAMOND TESTING
P.O. Box 157
HOISINGTON, KANSAS 67544
(800) 542-7313
DRILL-STEM TEST TICKET
FILE: hop31dst2

TIME ON: 12:32 PM
TIME OFF: 7:14 PM

Company LB Exploration, Inc Lease & Well No. Hopkins Ranch 31 #1
Contractor Ninnescah 101 Charge to LB Exploration, Inc
Elevation GL 1715 Formation Marm-Cong Effective Pay _____ Ft. Ticket No. K221
Date 2-2-15 Sec. 31 Twp. 32 S Range 13 W County Barber State KANSAS
Test Approved By Steve Petermann Diamond Representative Jason McLemore

Formation Test No. 2 Interval Tested from 4374 ft. to 4455 ft. Total Depth 4455 ft.
Packer Depth 4369 ft. Size 6 3/4 in. Packer depth _____ ft. Size 6 3/4 in.
Packer Depth 4374 ft. Size 6 3/4 in. Packer depth _____ ft. Size 6 3/4 in.

Depth of Selective Zone Set _____
Top Recorder Depth (Inside) 4362 ft. Recorder Number 5513 Cap. 5000 P.S.I.
Bottom Recorder Depth (Outside) 4363 ft. Recorder Number 5588 Cap. 5000 P.S.I.
Below Straddle Recorder Depth _____ ft. Recorder Number _____ Cap. _____ P.S.I.

Mud Type Chemical Viscosity 51 Drill Collar Length 0 ft. I.D. 2 1/4 in.
Weight 9.4 Water Loss 10.4 cc. Weight Pipe Length 0 ft. I.D. 2 7/8 in.
Chlorides 6000 P.P.M. Drill Pipe Length 4349 ft. I.D. 3 1/2 in.
Jars: Make STERLING Serial Number NA Test Tool Length 25 ft. Tool Size 3 1/2-IF in.
Did Well Flow? No Reversed Out No Anchor Length 81 ft. Size 4 1/2-FH in.
Main Hole Size 7 7/8 Tool Joint Size 4 1/2 XH in. 63' DP In Anchor Surface Choke Size 1 in. Bottom Choke Size 5/8 in.

Blow: 1st Open: BOB in 1 Min., 40 Seconds, Surface Blowback For 10 Min.
2nd Open: BOB on Open, No Blowback

Recovered 20 ft. of Drilling Mud
Recovered 20 ft. of TOTAL FLUID
Recovered _____ ft. of 1200' Gas In Pipe

Recovered _____ ft. of _____	Price Job
Recovered _____ ft. of _____	Other Charges
Remarks: _____	Insurance
_____	Total

Time Set Packer(s) 2:42 PM A.M. P.M. Time Started Off Bottom 5:02 PM A.M. P.M. Maximum Temperature 120

Initial Hydrostatic Pressure..... (A) 2095 P.S.I.
Initial Flow Period..... Minutes 10 (B) 42 P.S.I. to (C) 22 P.S.I.
Initial Closed In Period..... Minutes 30 (D) 307 P.S.I.
Final Flow Period..... Minutes 40 (E) 24 P.S.I. to (F) 20 P.S.I.
Final Closed In Period..... Minutes 60 (G) 687 P.S.I.
Final Hydrostatic Pressure..... (H) 2092 P.S.I.

Diamond Testing shall not be liable for damages of any kind to the property or personnel of the one for whom a test is made or for any loss suffered or sustained, directly or indirectly, through the use of its equipment, or its statement or opinion concerning the result of any test. Tools lost or damaged in the hole shall be paid for at cost by the party for whom the test is made.