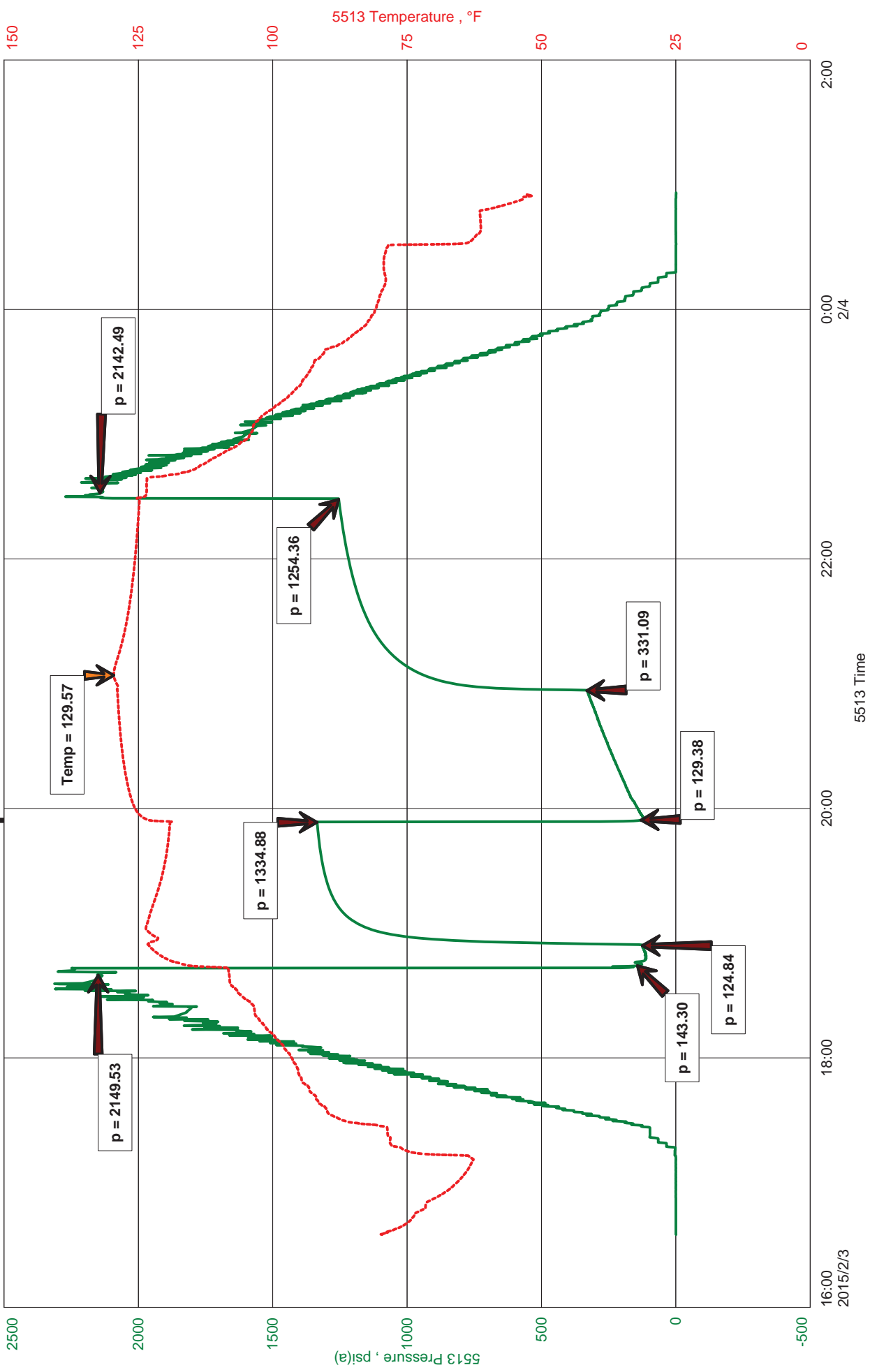
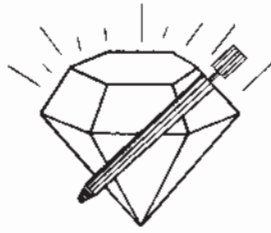


LB Exploration, Inc  
DST #4 Mississippi 4477-4510  
Start Test Date: 2015/02/03  
Final Test Date: 2015/02/04

Hopkins Ranch 31 #1  
Formation: Mississippi  
Job Number: K223

# Hopkins Ranch 31 #1





**DIAMOND TESTING**  
P. O. Box 157  
**HOISINGTON, KANSAS 67544**  
(316) 653-7550  
**GAS VOLUME REPORT**

Company LB Exploration, Inc Lease & Well No. Hopkins Ranch 31 #1  
Date 2-3-15 Sec. 31 Twp. 32S Rge. 13W Location \_\_\_\_\_ County Barber State KS  
Drilling Contractor Ninnescah #101 Formation Mississippi DST No. 4  
Remarks: Sample Taken 15 Min. into 2nd Open.

**INITIAL FLOW**

Time O'Clock	Orifice Size	Gauge	CF/D
	in.	in.	
	in.	in.	
	in.	in.	
	in.	in.	
	in.	in.	
	in.	in.	
	in.	in.	
	in.	in.	
	in.	in.	
	in.	in.	

**FINAL FLOW** IW

Time O'Clock	Orifice Size	Gauge	CF/D
10	.5 in.	5-1/2# in.	81,800
20	.5 in.	5-1/2# in.	81,800
30	.5 in.	4# in.	68,800
40	.5 in.	4# in.	68,800
50	.5 in.	4# in.	68,800
60	.5 in.	4# in.	68,800
	in.	in.	
	in.	in.	
	in.	in.	
	in.	in.	

FINAL FLOW



**JASON MCLEMORE**

**CELL # 620-617-0527**

**General Information**

<b>Company Name</b>	LB Exploration, Inc	<b>Job Number</b>	K223
<b>Contact</b>	Steve Petermann	<b>Representative</b>	Jason Mclemore
<b>Well Name</b>	Hopkins Ranch 31 #1	<b>Well Operator</b>	LB Exploration, Inc
<b>Unique Well ID</b>	DST #4 Mississippi 4477-4510	<b>Prepared By</b>	Jason Mclemore
<b>Surface Location</b>	31-32s-13w-Barber	<b>Qualified By</b>	Steve Petermann
<b>Field</b>	Palmer	<b>Test Unit</b>	
<b>Well Type</b>	Vertical		

**Test Information**

<b>Test Type</b>	Drill Stem Test	<b>Representative</b>	Jason Mclemore
<b>Formation</b>	Mississippi	<b>Well Operator</b>	LB Exploration, Inc
<b>Well Fluid Type</b>	01 Oil	<b>Report Date</b>	2015/02/04
<b>Test Purpose (AEUB)</b>	Initial Test	<b>Prepared By</b>	Jason Mclemore
<b>Start Test Date</b>	2015/02/03	<b>Start Test Time</b>	16:35:00
<b>Final Test Date</b>	2015/02/04	<b>Final Test Time</b>	00:56:00

**Test Results**

**RECOVERED:**

650 Muddy Water  
650 TOTAL FLUID

**CHLORIDES: 98,000**  
**PH: 6**  
**RW: .800 @ 36**



**DIAMOND TESTING**  
P.O. Box 157  
**HOISINGTON, KANSAS 67544**  
(800) 542-7313  
**DRILL-STEM TEST TICKET**  
FILE: hop31dst4

TIME ON: 4:35 PM  
TIME OFF: 12:56 AM

Company LB Exploration, Inc Lease & Well No. Hopkins Ranch 31 #1  
Contractor Ninnescah 101 Charge to LB Exploration, Inc  
Elevation GL 1715 Formation Mississippi Effective Pay \_\_\_\_\_ Ft. Ticket No. K223  
Date 2-3-15 Sec. 31 Twp. 32 S Range 13 W County Barber State KANSAS  
Test Approved By Steve Petermann Diamond Representative Jason McLemore

Formation Test No. 4 Interval Tested from 4477 ft. to 4510 ft. Total Depth 4510 ft.  
Packer Depth 4472 ft. Size 6 3/4 in. Packer depth \_\_\_\_\_ ft. Size 6 3/4 in.  
Packer Depth 4477 ft. Size 6 3/4 in. Packer depth \_\_\_\_\_ ft. Size 6 3/4 in.

Depth of Selective Zone Set \_\_\_\_\_  
Top Recorder Depth (Inside) 4465 ft. Recorder Number 5513 Cap. 5000 P.S.I.  
Bottom Recorder Depth (Outside) 4466 ft. Recorder Number 5588 Cap. 5000 P.S.I.  
Below Straddle Recorder Depth \_\_\_\_\_ ft. Recorder Number \_\_\_\_\_ Cap. \_\_\_\_\_ P.S.I.

Mud Type Chemical Viscosity 48 Drill Collar Length 0 ft. I.D. 2 1/4 in.  
Weight 9.2 Water Loss 10.2 cc. Weight Pipe Length 0 ft. I.D. 2 7/8 in.  
Chlorides 6800 P.P.M. Drill Pipe Length 4452 ft. I.D. 3 1/2 in.  
Jars: Make STERLING Serial Number NA Test Tool Length 25 ft. Tool Size 3 1/2-IF in.  
Did Well Flow? No Reversed Out No Anchor Length 33 ft. Size 4 1/2-FH in.  
Main Hole Size 7 7/8 Tool Joint Size 4 1/2 XH in. Surface Choke Size 1 in. Bottom Choke Size 5/8 in.

Blow: 1st Open: BOB in 15 seconds, Gas To Surface On Shut In, Blowback Built to 2-1/2"  
2nd Open: Gaging Gas, Blowback Built to 4"

Recovered 650 ft. of Muddy Water, 95% Water, 5% Mud  
Recovered 650 ft. of TOTAL FLUID  
Recovered \_\_\_\_\_ ft. of \_\_\_\_\_  
Recovered \_\_\_\_\_ ft. of CHLORIDES: 98,000

Recovered _____ ft. of <u>PH: 6</u>	Price Job
Recovered _____ ft. of <u>RW: .800 @ 36</u>	Other Charges
Remarks: _____	Insurance
_____	Total

Time Set Packer(s) 6:45 PM A.M. P.M. Time Started Off Bottom 10:25 PM A.M. P.M. Maximum Temperature 130

Initial Hydrostatic Pressure..... (A) 2150 P.S.I.  
Initial Flow Period..... Minutes 10 (B) 143 P.S.I. to (C) 125 P.S.I.  
Initial Closed In Period..... Minutes 60 (D) 1335 P.S.I.  
Final Flow Period..... Minutes 60 (E) 129 P.S.I. to (F) 331 P.S.I.  
Final Closed In Period..... Minutes 90 (G) 1254 P.S.I.  
Final Hydrostatic Pressure..... (H) 2142 P.S.I.

Diamond Testing shall not be liable for damages of any kind to the property or personnel of the one for whom a test is made or for any loss suffered or sustained, directly or indirectly, through the use of its equipment, or its statement or opinion concerning the result of any test. Tools lost or damaged in the hole shall be paid for at cost by the party for whom the test is made.