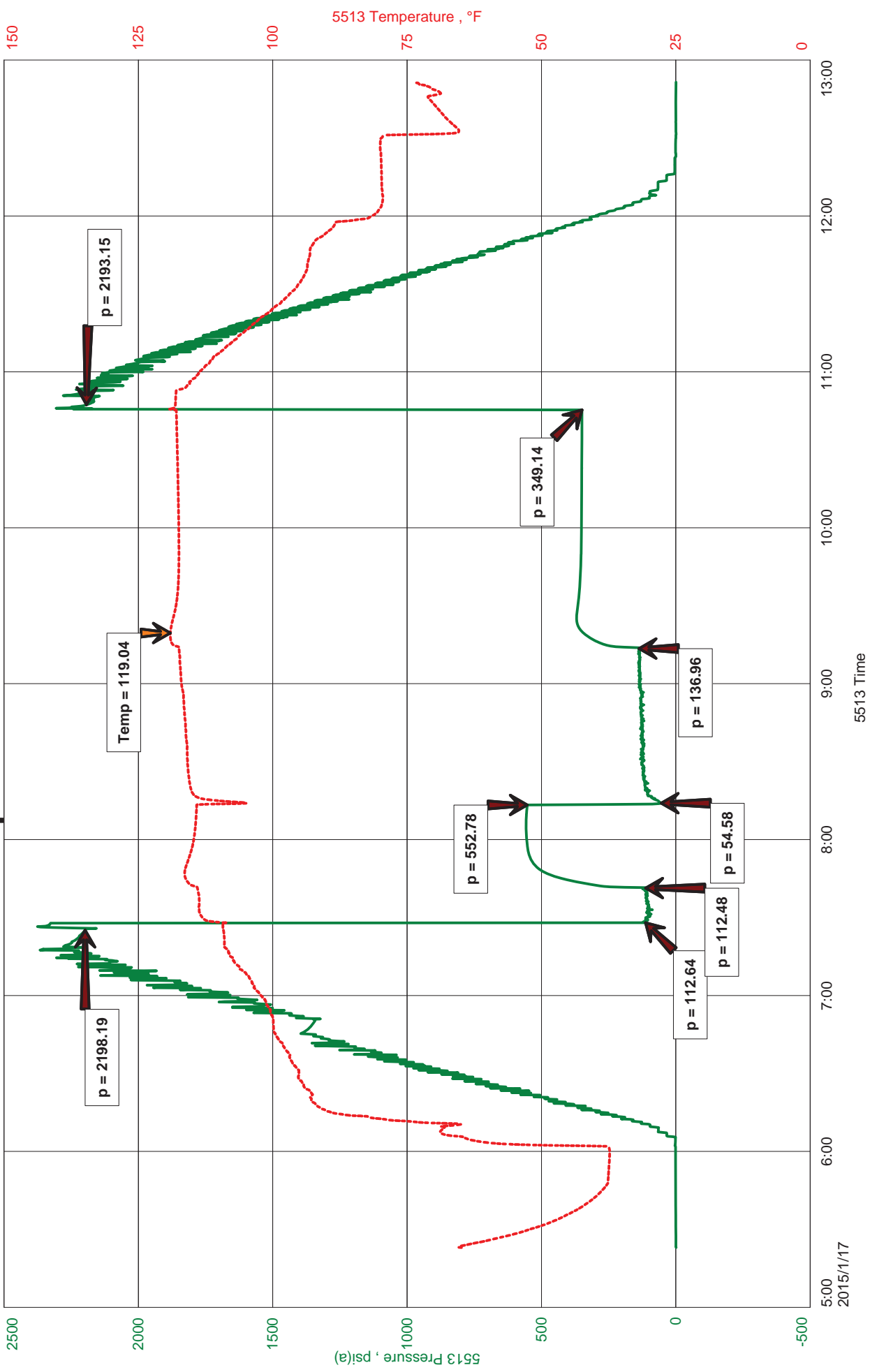
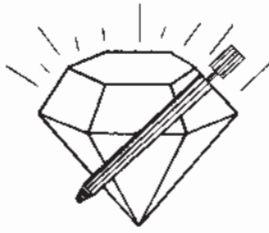


LB Exploration, Inc
DSt #4 Mississippi 4560-4605
Start Test Date: 2015/01/17
Final Test Date: 2015/01/17

Hopkins Ranch 30 #2
Formation: Mississippi
Pool: Wildcat
Job Number: K217

Hopkins Ranch 30 #2





DIAMOND TESTING
P. O. Box 157
HOISINGTON, KANSAS 67544
(316) 653-7550
GAS VOLUME REPORT

Company LB Exploration, Inc Lease & Well No. Hopkins Ranch 30 #2
Date 1-17-15 Sec. 30 Twp. 32S Rge. 13W Location _____ County Barber State KS
Drilling Contractor Ninnescah #101 Formation Mississippi DST No. 4
Remarks: Sample Taken on 1st Shut In Before Blowing Down Blow.

INITIAL FLOW

Time O'Clock	Orifice Size	Gauge	CF/D
5	.75 in.	10 PSI in.	259,000
10	.75 in.	16 PSI in.	344,000
15	.75 in.	18 PSI in.	370,000
	in.	in.	
	in.	in.	
	in.	in.	
	in.	in.	
	in.	in.	
	in.	in.	
	in.	in.	

FINAL FLOW IW

Time O'Clock	Orifice Size	Gauge	CF/D
10	.75 in.	18 in.	370,000
20	.75 in.	20 in.	398,000
30	.75 in.	20 in.	398,000
40	.75 in.	20 in.	398,000
50	.75 in.	20 in.	398,000
60	.75 in.	20 in.	398,000
	in.	in.	
	in.	in.	
	in.	in.	
	in.	in.	

FINAL FLOW



JASON MCLEMORE

CELL # 620-617-0527

General Information

Company Name	LB Exploration, Inc	Job Number	K217
Contact	Steve Petermann	Representative	Jason Mclemore
Well Name	Hopkins Ranch 30 #2	Well Operator	LB Exploration, Inc
Unique Well ID	DSt #4 Mississippi 4560-4605	Prepared By	Jason McLemore
Surface Location	30-32s-13w-Barber	Qualified By	Steve Petermann
Field	Palmer	Test Unit	6
Well Type	Vertical		

Test Information

Test Type	Drill Stem Test	Representative	Jason Mclemore
Formation	Mississippi	Well Operator	LB Exploration, Inc
Well Fluid Type	01 Oil	Report Date	2015/01/17
Test Purpose (AEUB)	Initial Test	Prepared By	Jason McLemore
Start Test Date	2015/01/17	Start Test Time	05:23:00
Final Test Date	2015/01/17	Final Test Time	12:52:00

Test Results

RECOVERED:

165	Drilling Mud
165	TOTAL FLUID



DIAMOND TESTING
P.O. Box 157
HOISINGTON, KANSAS 67544
(800) 542-7313
DRILL-STEM TEST TICKET
FILE: hop30dst4

TIME ON: 5:23 AM
TIME OFF: 12:52 PM

Company LB Exploration, Inc Lease & Well No. Hopkins Ranch 30 #2
Contractor Ninnescah 101 Charge to LB Exploration, Inc
Elevation GL 1856 Formation Mississippi Effective Pay _____ Ft. Ticket No. K217
Date 1-17-15 Sec. 30 Twp. 32 S Range 13 W County Barber State KANSAS
Test Approved By Steve Petermann Diamond Representative Jason McLemore

Formation Test No. 4 Interval Tested from 4560 ft. to 4605 ft. Total Depth 4605 ft.
Packer Depth 4555 ft. Size 6 3/4 in. Packer depth _____ ft. Size 6 3/4 in.
Packer Depth 4560 ft. Size 6 3/4 in. Packer depth _____ ft. Size 6 3/4 in.

Depth of Selective Zone Set _____

Top Recorder Depth (Inside) 4548 ft. Recorder Number 5513 Cap. 5000 P.S.I.
Bottom Recorder Depth (Outside) 4549 ft. Recorder Number 5588 Cap. 5000 P.S.I.
Below Straddle Recorder Depth _____ ft. Recorder Number _____ Cap. _____ P.S.I.

Mud Type Chemical Viscosity 48 Drill Collar Length 0 ft. I.D. 2 1/4 in.
Weight 9.2 Water Loss 10.2 cc. Weight Pipe Length 0 ft. I.D. 2 7/8 in.
Chlorides 6800 P.P.M. Drill Pipe Length 4535 ft. I.D. 3 1/2 in.
Jars: Make STERLING Serial Number NA Test Tool Length 25 ft. Tool Size 3 1/2-IF in.
Did Well Flow? No Reversed Out No Anchor Length 45 ft. Size 4 1/2-FH in.
Main Hole Size 7 7/8 Tool Joint Size 4 1/2 XH in. 31'DP in Anchor Surface Choke Size 1 in. Bottom Choke Size 5/8 in.

Blow: 1st Open: Strong, BOB in 40 Sec., Gas To Surface in 8 Min., Gaging Gas., No Blowback
2nd Open: Gaging Gas, No Blowback

Recovered 165 ft. of Drilling Mud
Recovered 165 ft. of TOTAL FLUID
Recovered _____ ft. of _____
Recovered _____ ft. of _____

Recovered _____ ft. of _____	Price Job
Recovered _____ ft. of _____	Other Charges
Remarks: _____	Insurance
_____	Total

Time Set Packer(s) 7:32 AM A.M. P.M. Time Started Off Bottom 10:47 AM A.M. P.M. Maximum Temperature 119

Initial Hydrostatic Pressure..... (A) 2198 P.S.I.
Initial Flow Period..... Minutes 15 (B) 113 P.S.I. to (C) 112 P.S.I.
Initial Closed In Period..... Minutes 30 (D) 553 P.S.I.
Final Flow Period..... Minutes 60 (E) 55 P.S.I. to (F) 137 P.S.I.
Final Closed In Period..... Minutes 90 (G) 349 P.S.I.
Final Hydrostatic Pressure..... (H) 2193 P.S.I.

Diamond Testing shall not be liable for damages of any kind to the property or personnel of the one for whom a test is made or for any loss suffered or sustained, directly or indirectly, through the use of its equipment, or its statement or opinion concerning the result of any test. Tools lost or damaged in the hole shall be paid for at cost by the party for whom the test is made.