

Section 9  
34S 8W

ROBERTS 3408 2-16H



CATHER TRUST 3408 2-9H

CATHER TRUST 3408 1-9H



ROBERTS 3408 1-16H

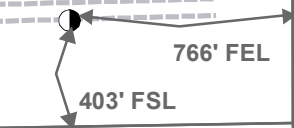
Miss Entry: 4958'  
-98.186720 37.092128

Top Perf: 5424'  
-98.186720 37.090970

Section 16  
34S 8W

Harper County

Bottom Perf: 9155'  
-98.186454 37.080839  
BHL: 9174'  
-98.186455 37.080678



Section 21  
34S 8W



Actual Bottom-Hole Location of Roberts 3408 1-16H  
T&R: 34S 8W  
Section: 16, 766' FEL & 403' FSL  
-98.186455 37.080678

1 in = 666 ft

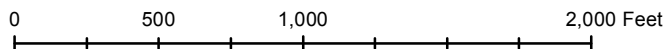


● Actual BH Location

\* SandRidge Wells

--- Perf

□ Sections



Draftsman:

Dory Deines

Draft Date: 6/16/2015

Drawing Name/Number:

Addendum\_Roberts 3408 1-16H.mxd

Coordinate System:

NAD 1927 State Plane  
Kansas South FIPS: 1502