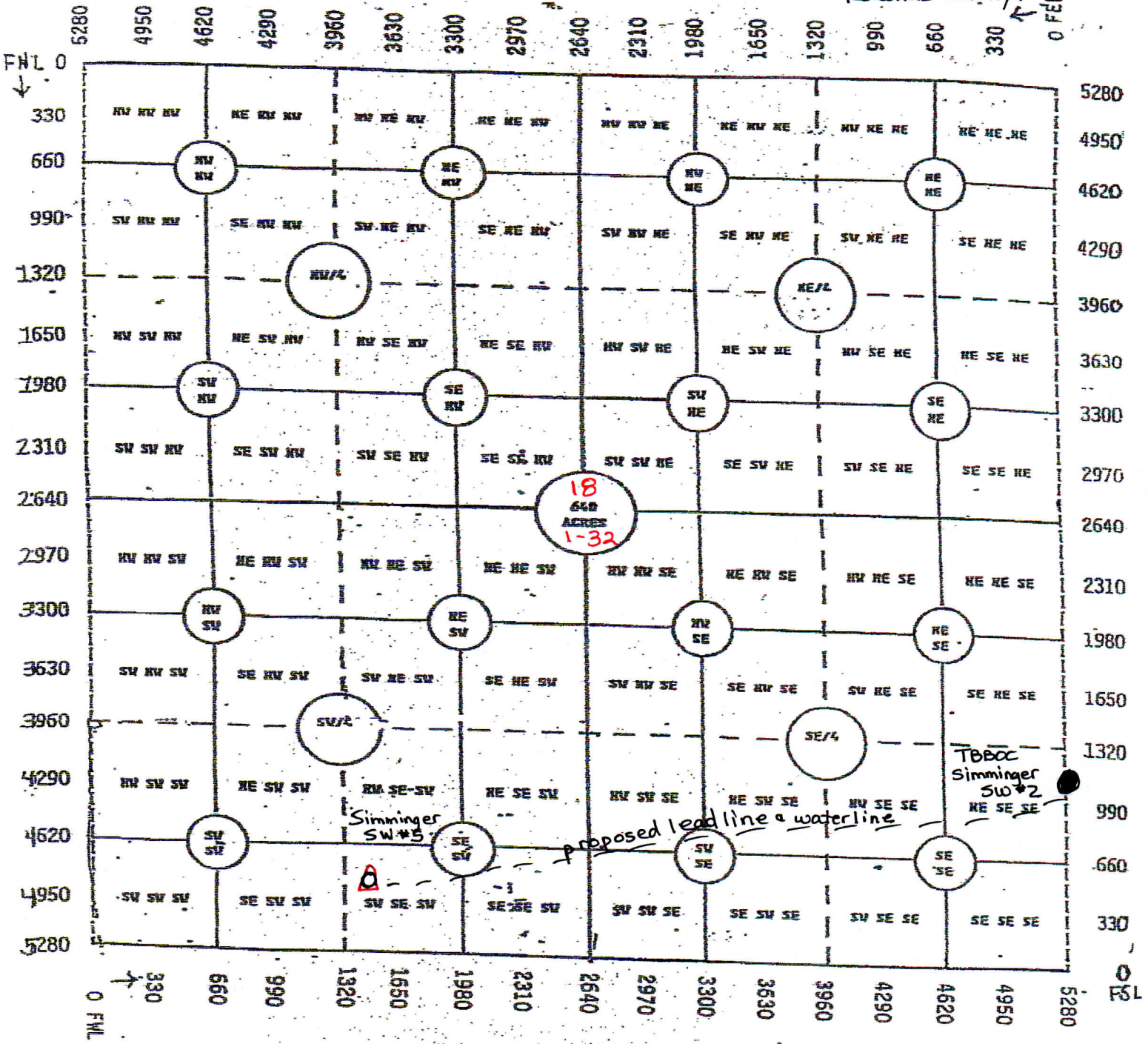


The Bill Bowman Oil Company

Simlinger (B) Lease

SW/4 of S18-T15-R32W

Rawlins County, Kansas



If production pipe is set on Simlinger SW#5, a leadline & waterline will be laid to Simlinger SW#2 - API #15-153-21059 NWNWSWSW of S17-T15-R32W (1090'FSL/5280'FEL), the lines will be tied into Simlinger SW#2, then go to TBOC Simlinger SW lease (sw/4 of 17-1-32, Rawlins) (all the same landowner) Tank Battery for oil & Simlinger SW#3 SWD.