



**TRILOBITE
TESTING, INC.**

DRILL STEM TEST REPORT

Sam Gary Jr. & Assc., Inc.

2 - 4S - 36W - Rawlins

1515 Wynkoop, Ste 700
Denver Co, 80202

FisherCC. #1-2

Job Ticket: 62351

DST#: 2

ATTN: Chris Mitchell

Test Start: 2015.03.06 @ 09:37:00

GENERAL INFORMATION:

Formation: **Ft. Scott & Cherokee**

Deviated: No Whipstock: ft (KB)

Time Tool Opened: 13:01:30

Time Test Ended: 17:07:45

Test Type: Conventional Bottom Hole (Initial)

Tester: Royal Fisher

Unit No: #54

Interval: 4566.00 ft (KB) To 4628.00 ft (KB) (TVD)

Reference Elevations: 3222.00 ft (KB)

Total Depth: 4628.00 ft (KB) (TVD)

3217.00 ft (CF)

Hole Diameter: 7.88 inches Hole Condition: Good

KB to GR/CF: 5.00 ft

Serial #: 6753 Outside

Press @ RunDepth: 18.58 psig @ 4567.00 ft (KB)

Capacity: 8000.00 psig

Start Date: 2015.03.06

End Date:

2015.03.06

Last Calib.:

2015.03.06

Start Time:

09:37:05

End Time:

17:07:44

Time On Btm:

2015.03.06 @ 13:01:00

Time Off Btm:

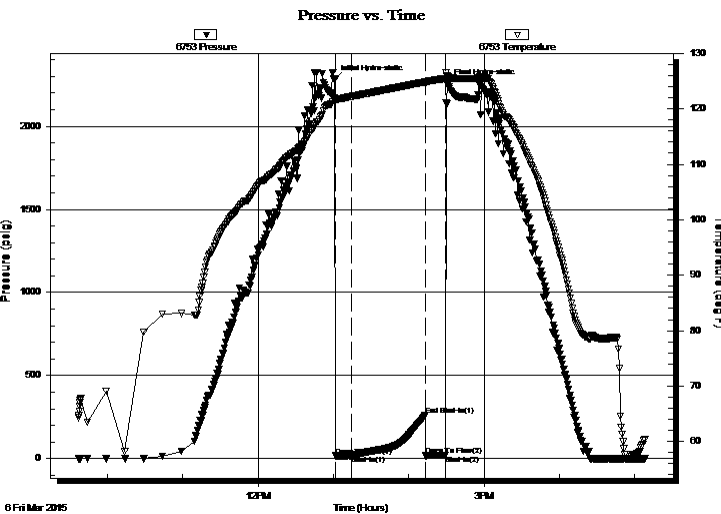
2015.03.06 @ 14:30:45

TEST COMMENT: 10 - IF - Surface blow built up to 1/2"

60 - ISI - No Return

15 - FF - No Surface blow

FSI - Pulled tool



PRESSURE SUMMARY

Time (Min.)	Pressure (psig)	Temp (deg F)	Annotation
0	2279.55	121.92	Initial Hydro-static
1	17.06	121.37	Open To Flow (1)
14	18.58	122.23	Shut-In(1)
72	261.60	124.85	End Shut-In(1)
73	17.51	124.72	Open To Flow (2)
88	18.30	125.48	Shut-In(2)
90	2256.90	125.86	Final Hydro-static

Recovery

Length (ft)	Description	Volume (bbl)
4.00	Mud - 100M	0.02

Gas Rates

	Choke (inches)	Pressure (psig)	Gas Rate (Mcf/d)



TRILOBITE
TESTING, INC.

DRILL STEM TEST REPORT

Sam Gary Jr. & Assoc., Inc.

2 - 4S - 36W - Rawlins

1515 Wynkoop, Ste 700
Denver Co, 80202

FisherCC. #1-2

Job Ticket: 62351

DST#: 2

ATTN: Chris Mitchell

Test Start: 2015.03.06 @ 09:37:00

GENERAL INFORMATION:

Formation: **Ft. Scott & Cherokee**

Deviated: No Whipstock: ft (KB)

Time Tool Opened: 13:01:30

Time Test Ended: 17:07:45

Test Type: Conventional Bottom Hole (Initial)

Tester: Royal Fisher

Unit No: #54

Interval: 4566.00 ft (KB) To 4628.00 ft (KB) (TVD)

Total Depth: 4628.00 ft (KB) (TVD)

Hole Diameter: 7.88 inches Hole Condition: Good

Reference Elevations: 3222.00 ft (KB)

3217.00 ft (CF)

KB to GR/CF: 5.00 ft

Serial #: 8368

Press @RunDepth: psig @ ft (KB)

Start Date: 2015.03.06 End Date: 2015.03.06

Start Time: 09:37:05 End Time: 17:07:44

Capacity: 8000.00 psig

Last Calib.: 2015.03.06

Time On Btm:

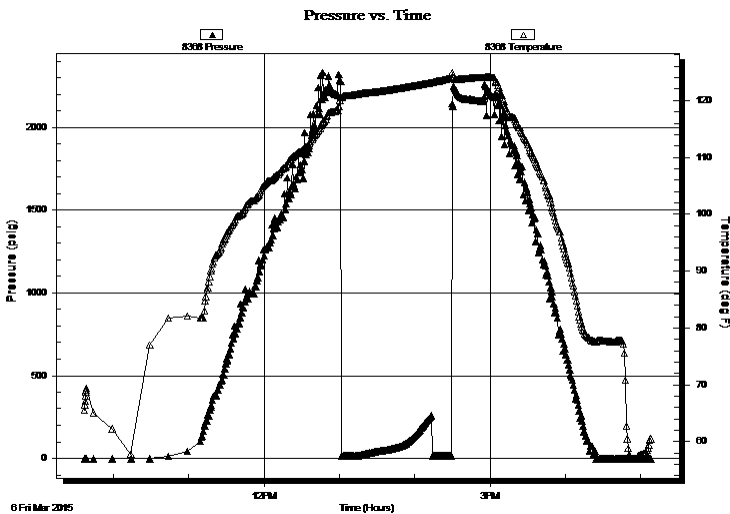
Time Off Btm:

TEST COMMENT: 10 - IF - Surface blow built up to 1/2"

60 - ISI - No Return

15 - FF - No Surface blow

FSI - Pulled tool



PRESSURE SUMMARY

Time (Min.)	Pressure (psig)	Temp (deg F)	Annotation

Recovery

Length (ft)	Description	Volume (bbl)
4.00	Mud - 100M	0.02

Gas Rates

Choke (inches)	Pressure (psig)	Gas Rate (Mcf/d)



**TRILOBITE
TESTING, INC.**

DRILL STEM TEST REPORT

Sam Gary Jr. & Assoc., Inc.

1515 Wynkoop, Ste 700
Denver Co, 80202

ATTN: Chris Mitchell

2 - 4S - 36W - Rawlins

FisherCC. #1-2

Job Ticket: 62351

DST#: 2

Test Start: 2015.03.06 @ 09:37:00

GENERAL INFORMATION:

Formation: **Ft. Scott & Cherokee**

Deviated: No Whipstock: ft (KB)

Time Tool Opened: 13:01:30

Time Test Ended: 17:07:45

Test Type: Conventional Bottom Hole (Initial)

Tester: Royal Fisher

Unit No: #54

Interval: 4566.00 ft (KB) To 4628.00 ft (KB) (TVD)

Total Depth: 4628.00 ft (KB) (TVD)

Hole Diameter: 7.88 inches Hole Condition: Good

Reference Elevations: 3222.00 ft (KB)

3217.00 ft (CF)

KB to GR/CF: 5.00 ft

Serial #: 6755

Press @RunDepth: psig @ ft (KB)

Start Date: 2015.03.06

End Date: 2015.03.06

Capacity: 8000.00 psig

Last Calib.: 2015.03.06

Start Time: 09:37:05

End Time: 17:07:44

Time On Btm:

Time Off Btm:

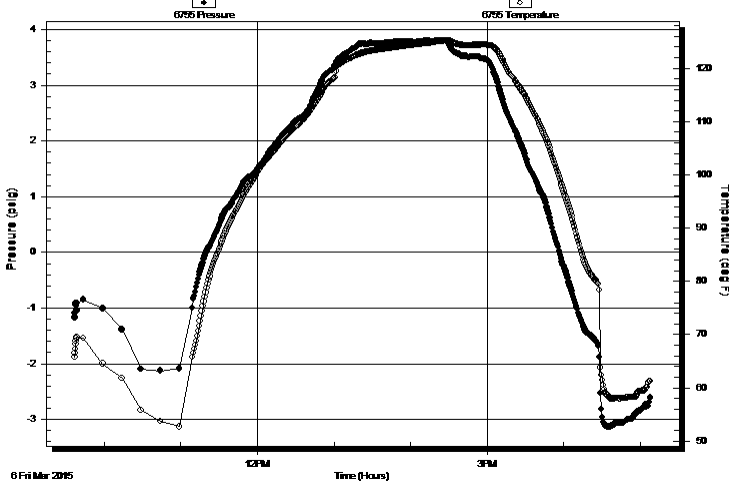
TEST COMMENT: 10 - IF - Surface blow built up to 1/2"

60 - ISI - No Return

15 - FF - No Surface blow

FSI - Pulled tool

Pressure vs. Time



PRESSURE SUMMARY

Time (Min.)	Pressure (psig)	Temp (deg F)	Annotation

Recovery

Length (ft)	Description	Volume (bbl)
4.00	Mud - 100M	0.02

Gas Rates

Choke (inches)	Pressure (psig)	Gas Rate (Mcf/d)



**TRILOBITE
TESTING, INC.**

DRILL STEM TEST REPORT

FLUID SUMMARY

Sam Gary Jr. & Assc., Inc.

2 - 4S - 36W - Rawlins

1515 Wynkoop, Ste 700
Denver Co, 80202

FisherCC. #1-2

Job Ticket: 62351

DST#: 2

ATTN: Chris Mitchell

Test Start: 2015.03.06 @ 09:37:00

Mud and Cushion Information

Mud Type: Gel Chem

Cushion Type:

Oil API:

deg API

Mud Weight: 9.00 lb/gal

Cushion Length:

ft

Water Salinity:

ppm

Viscosity: 59.00 sec/qt

Cushion Volume:

bbbl

Water Loss: 7.20 in³

Gas Cushion Type:

Resistivity: 0.00 ohm.m

Gas Cushion Pressure:

psig

Salinity: 1200.00 ppm

Filter Cake: 1.00 inches

Recovery Information

Recovery Table

Length ft	Description	Volume bbl
4.00	Mud - 100M	0.020

Total Length: 4.00 ft Total Volume: 0.020 bbl

Num Fluid Samples: 0

Num Gas Bombs: 0

Serial #:

Laboratory Name:

Laboratory Location:

Recovery Comments:

Pressure vs. Time

