



**TRILOBITE TESTING, INC.**

# DRILL STEM TEST REPORT

Samuel Gary Jr Associates Inc

**25-10s-30w Sheridan KS**

1515 Wynkoop STE 700  
Denver CO, 80202

**Kevin Zerr 1-25**

ATTN: Clayton Camozzi

Job Ticket: 62400

**DST#: 2**

Test Start: 2015.03.12 @ 17:53:00

## GENERAL INFORMATION:

Formation: **LKC "C"**

Deviated: No Whipstock: ft (KB)

Time Tool Opened: 19:22:45

Time Test Ended: 23:12:45

Test Type: Conventional Bottom Hole (Reset)

Tester: Cody Bloedorn

Unit No: 73

**Interval: 3981.00 ft (KB) To 3999.00 ft (KB) (TVD)**

Reference Elevations: 2868.00 ft (KB)

Total Depth: 3999.00 ft (KB) (TVD)

2860.00 ft (CF)

Hole Diameter: 7.88 inches Hole Condition: Fair

KB to GR/CF: 8.00 ft

**Serial #: 8648 Inside**

Press @ Run Depth: 479.50 psig @ 3985.00 ft (KB)

Capacity: 8000.00 psig

Start Date: 2015.03.12

End Date:

2015.03.12

Last Calib.:

2015.03.12

Start Time: 17:53:05

End Time:

23:12:44

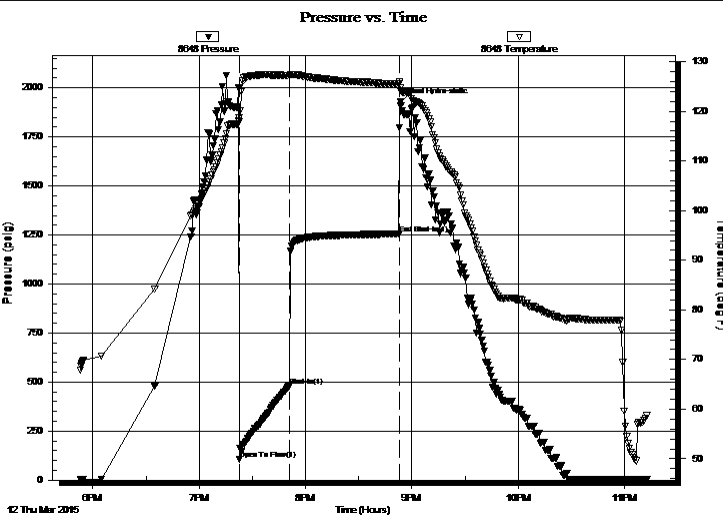
Time On Btm:

2015.03.12 @ 19:22:30

Time Off Btm:

2015.03.12 @ 20:53:30

TEST COMMENT: 30 - IF- B.O.B. in 3 minutes  
60 - IS- No return \*\*\*\*Pulled Tool\*\*\*



## PRESSURE SUMMARY

Time (Min.)	Pressure (psig)	Temp (deg F)	Annotation
0	2002.66	118.69	Initial Hydro-static
1	106.93	117.97	Open To Flow (1)
29	479.50	127.23	Shut-In(1)
91	1254.63	125.54	End Shut-In(1)
91	1926.73	124.66	Final Hydro-static

## Recovery

Length (ft)	Description	Volume (bbl)
868.00	MW, 5%M, 95%W	11.90

## Gas Rates

Choke (inches)	Pressure (psig)	Gas Rate (Mcf/d)

\* Recovery from multiple tests







**TRILOBITE  
TESTING, INC.**

# DRILL STEM TEST REPORT

**FLUID SUMMARY**

Samuel Gary Jr Associates Inc

**25-10s-30w Sheridan KS**

1515 Wynkoop STE 700  
Denver CO, 80202

**Kevin Zerr 1-25**

Job Ticket: 62400

**DST#: 2**

ATTN: Clayton Camozzi

Test Start: 2015.03.12 @ 17:53:00

## Mud and Cushion Information

Mud Type: Gel Chem

Cushion Type:

Oil API:

deg API

Mud Weight: 9.00 lb/gal

Cushion Length:

ft

Water Salinity:

127000 ppm

Viscosity: 59.00 sec/qt

Cushion Volume:

bbbl

Water Loss: 7.97 in<sup>3</sup>

Gas Cushion Type:

Resistivity: ohm.m

Gas Cushion Pressure:

psig

Salinity: 500.00 ppm

Filter Cake: 4.00 inches

## Recovery Information

Recovery Table

Length ft	Description	Volume bbl
868.00	MW, 5%M, 95%W	11.902

Total Length: 868.00 ft      Total Volume: 11.902 bbl

Num Fluid Samples: 0

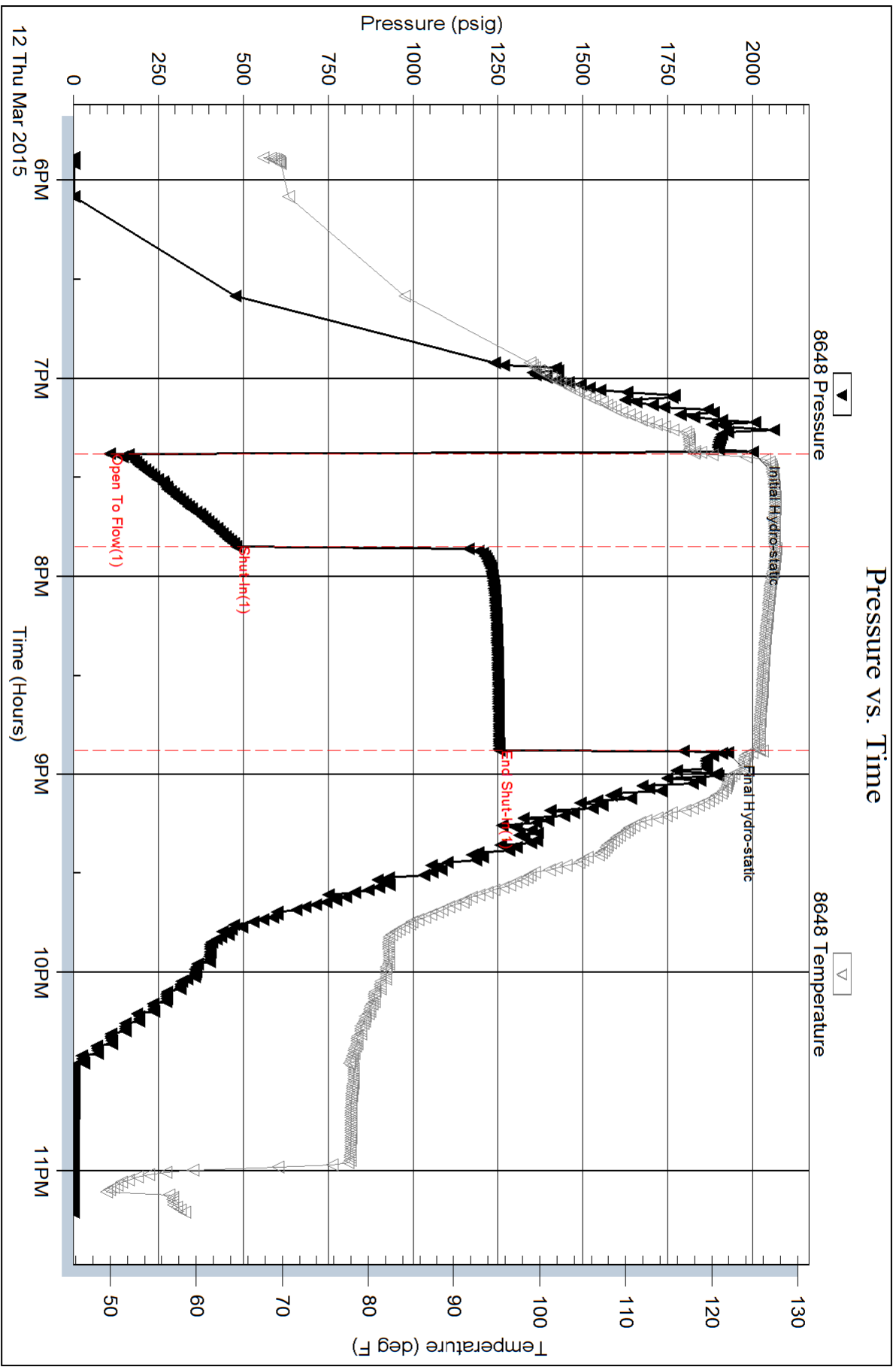
Num Gas Bombs: 0

Serial #:

Laboratory Name:

Laboratory Location:

Recovery Comments: .08 @ 55 Degrees = 127000

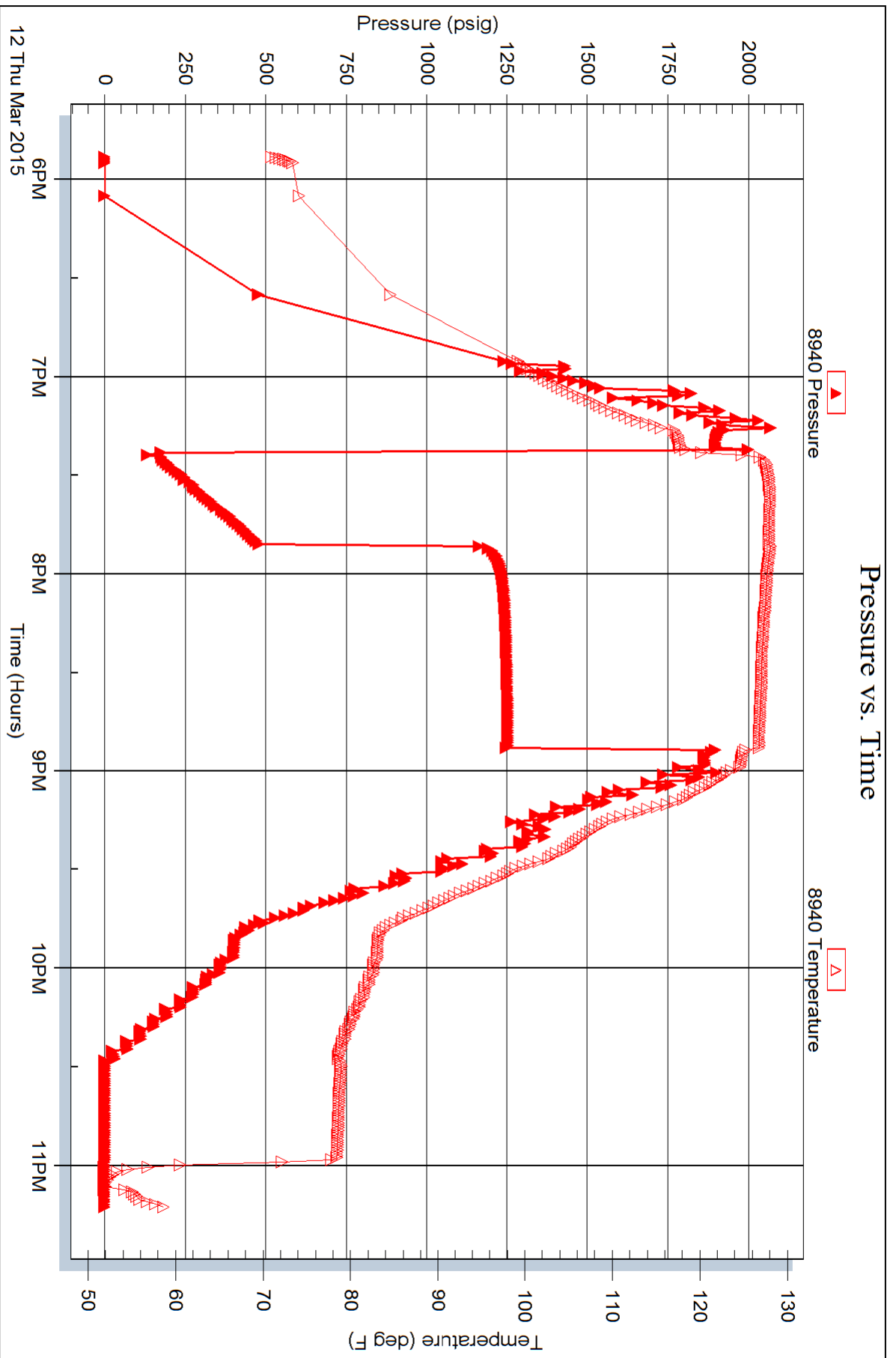


Serial #: 8940

Outside Samuel Gary Jr Associates Inc

Kevin Zerr 1-25

DST Test Number: 2



Serial #: 8958

Fluid

Samuel Gary Jr Associates Inc

Kevin Zerr 1-25

DST Test Number: 2

