



TRILOBITE TESTING, INC.

DRILL STEM TEST REPORT

Samuel Gary Jr Associates Inc

25-10s-30w Sheridan KS

1515 Wynkoop STE 700
Denver CO, 80202

Kevin Zerr 1-25

Job Ticket: 62421

DST#: 3

ATTN: Clayton Camozzi

Test Start: 2015.03.13 @ 08:33:00

GENERAL INFORMATION:

Formation: **LKC "D-F"**

Deviated: No Whipstock: ft (KB)

Time Tool Opened: 11:15:00

Time Test Ended: 16:38:00

Test Type: Conventional Bottom Hole (Reset)

Tester: Cody Bloedorn

Unit No: 73

Interval: 4001.00 ft (KB) To 4034.00 ft (KB) (TVD)

Reference Elevations: 2868.00 ft (KB)

Total Depth: 4034.00 ft (KB) (TVD)

2860.00 ft (CF)

Hole Diameter: 7.88 inches Hole Condition: Fair

KB to GR/CF: 8.00 ft

Serial #: 8648

Inside

Press @ Run Depth: 112.46 psig @ 4006.00 ft (KB)

Capacity: 8000.00 psig

Start Date: 2015.03.13

End Date:

2015.03.13

Last Calib.:

2015.03.13

Start Time: 08:33:05

End Time:

16:37:59

Time On Btm:

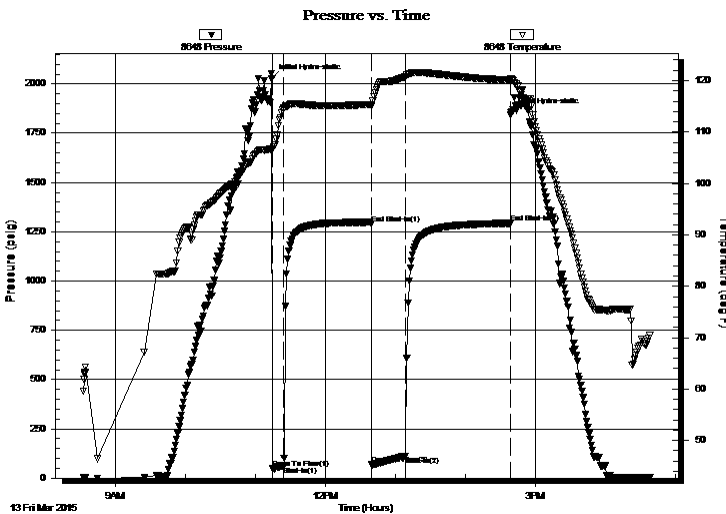
2015.03.13 @ 11:14:15

Time Off Btm:

2015.03.13 @ 14:39:00

TEST COMMENT: 10 - IF- 3.75" blow
75 - IS- No return
30 - FF- 6" blow
90 - FS- No return

PRESSURE SUMMARY



Time (Min.)	Pressure (psig)	Temp (deg F)	Annotation
0	2028.12	106.68	Initial Hydro-static
1	48.81	106.69	Open To Flow (1)
11	62.38	114.56	Shut-In(1)
86	1290.86	115.37	End Shut-In(1)
86	70.47	115.02	Open To Flow (2)
115	112.46	120.81	Shut-In(2)
204	1292.91	120.10	End Shut-In(2)
205	1854.99	120.22	Final Hydro-static

Recovery

Length (ft)	Description	Volume (bbl)
124.00	MW - Oil spots, 10%M, 90%W	1.47
68.00	VSOCM, 5%O, 95%M	0.95

Gas Rates

Choke (inches)	Pressure (psig)	Gas Rate (Mcf/d)

* Recovery from multiple tests



TRILOBITE TESTING, INC.

DRILL STEM TEST REPORT

Samuel Gary Jr Associates Inc

25-10s-30w Sheridan KS

1515 Wynkoop STE 700
Denver CO, 80202

Kevin Zerr 1-25

Job Ticket: 62421

DST#: 3

ATTN: Clayton Camozzi

Test Start: 2015.03.13 @ 08:33:00

GENERAL INFORMATION:

Formation: **LKC "D-F"**

Deviated: No Whipstock: ft (KB)

Time Tool Opened: 11:15:00

Time Test Ended: 16:38:00

Test Type: Conventional Bottom Hole (Reset)

Tester: Cody Bloedorn

Unit No: 73

Interval: **4001.00 ft (KB) To 4034.00 ft (KB) (TVD)**

Reference Elevations: 2868.00 ft (KB)

Total Depth: 4034.00 ft (KB) (TVD)

2860.00 ft (CF)

Hole Diameter: 7.88 inches Hole Condition: Fair

KB to GR/CF: 8.00 ft

Serial #: 8940 Outside

Press @ Run Depth: psig @ 4006.00 ft (KB)

Capacity: 8000.00 psig

Start Date: 2015.03.13

End Date: 2015.03.13

Last Calib.: 2015.03.13

Start Time: 08:33:05

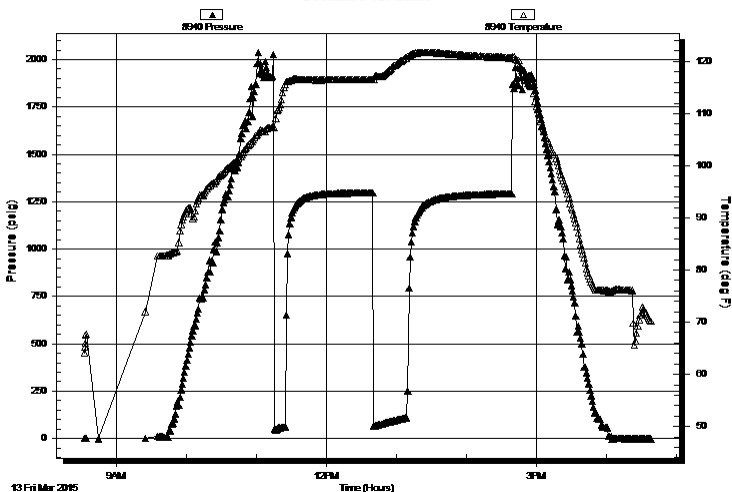
End Time: 16:38:14

Time On Btm:

Time Off Btm:

TEST COMMENT: 10 - IF- 3.75" blow
75 - IS- No return
30 - FF- 6" blow
90 - FS- No return

Pressure vs. Time



PRESSURE SUMMARY

Time (Min.)	Pressure (psig)	Temp (deg F)	Annotation

Recovery

Length (ft)	Description	Volume (bbl)
124.00	MW - Oil spots, 10%M, 90%W	1.47
68.00	VSOCM, 5%O, 95%M	0.95

Gas Rates

	Choke (inches)	Pressure (psig)	Gas Rate (Mcf/d)

* Recovery from multiple tests



TRILOBITE TESTING, INC.

DRILL STEM TEST REPORT

Samuel Gary Jr Associates Inc

25-10s-30w Sheridan KS

1515 Wynkoop STE 700
Denver CO, 80202

Kevin Zerr 1-25

Job Ticket: 62421

DST#: 3

ATTN: Clayton Camozzi

Test Start: 2015.03.13 @ 08:33:00

GENERAL INFORMATION:

Formation: **LKC "D-F"**

Deviated: No Whipstock: ft (KB)

Time Tool Opened: 11:15:00

Time Test Ended: 16:38:00

Test Type: Conventional Bottom Hole (Reset)

Tester: Cody Bloedorn

Unit No: 73

Interval: **4001.00 ft (KB) To 4034.00 ft (KB) (TVD)**

Reference Elevations: 2868.00 ft (KB)

Total Depth: 4034.00 ft (KB) (TVD)

2860.00 ft (CF)

Hole Diameter: 7.88 inches Hole Condition: Fair

KB to GR/CF: 8.00 ft

Serial #: 8958 Fluid

Press @ Run Depth: psig @ 3968.00 ft (KB)

Capacity: 8000.00 psig

Start Date: 2015.03.13

End Date:

2015.03.13

Last Calib.:

2015.03.13

Start Time: 08:33:05

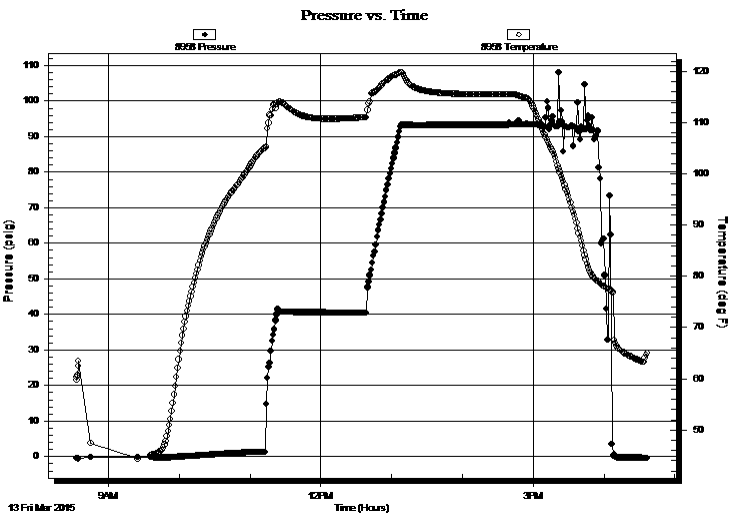
End Time:

16:37:14

Time On Btm:

Time Off Btm:

TEST COMMENT: 10 - IF- 3.75" blow
75 - IS- No return
30 - FF- 6" blow
90 - FS- No return



PRESSURE SUMMARY

Time (Min.)	Pressure (psig)	Temp (deg F)	Annotation

Recovery

Length (ft)	Description	Volume (bbl)
124.00	MW - Oil spots, 10%M, 90%W	1.47
68.00	VSOCM, 5%O, 95%M	0.95

* Recovery from multiple tests

Gas Rates

Choke (inches)	Pressure (psig)	Gas Rate (Mcf/d)



**TRILOBITE
TESTING, INC.**

DRILL STEM TEST REPORT

FLUID SUMMARY

Samuel Gary Jr Associates Inc

25-10s-30w Sheridan KS

1515 Wynkoop STE 700
Denver CO, 80202

Kevin Zerr 1-25

Job Ticket: 62421

DST#: 3

ATTN: Clayton Camozzi

Test Start: 2015.03.13 @ 08:33:00

Mud and Cushion Information

Mud Type: Gel Chem

Cushion Type:

Oil API:

deg API

Mud Weight: 9.00 lb/gal

Cushion Length:

ft

Water Salinity:

95000 ppm

Viscosity: 58.00 sec/qt

Cushion Volume:

bbf

Water Loss: 7.20 in³

Gas Cushion Type:

Resistivity: ohm.m

Gas Cushion Pressure:

psig

Salinity: 500.00 ppm

Filter Cake: 3.00 inches

Recovery Information

Recovery Table

Length ft	Description	Volume bbf
124.00	MW - Oil spots, 10%M, 90%W	1.466
68.00	VSOCM, 5%O, 95%M	0.954

Total Length: 192.00 ft Total Volume: 2.420 bbf

Num Fluid Samples: 0

Num Gas Bombs: 0

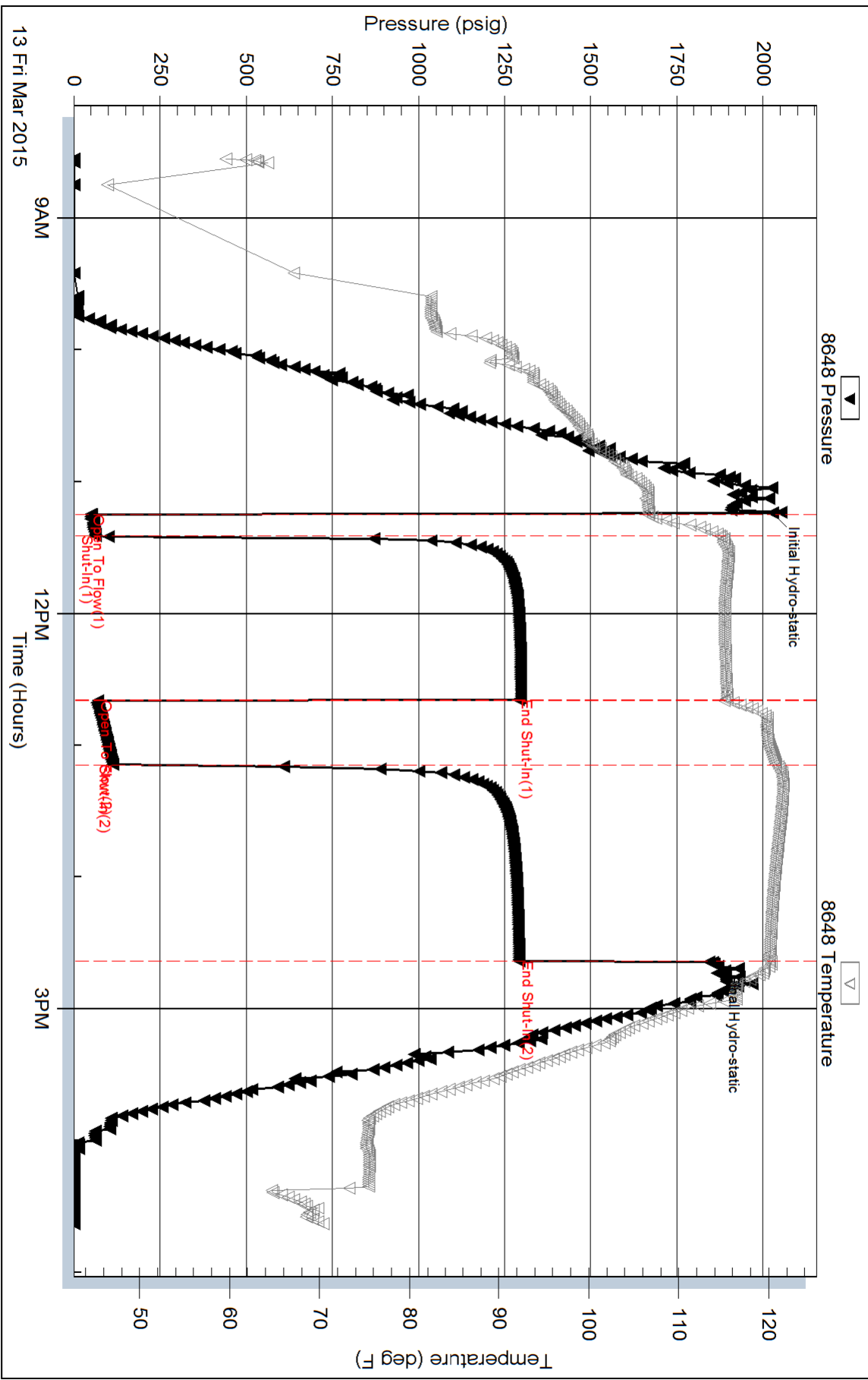
Serial #:

Laboratory Name:

Laboratory Location:

Recovery Comments: .08 @ 72 Degrees = 95,000 Salinity

Pressure vs. Time

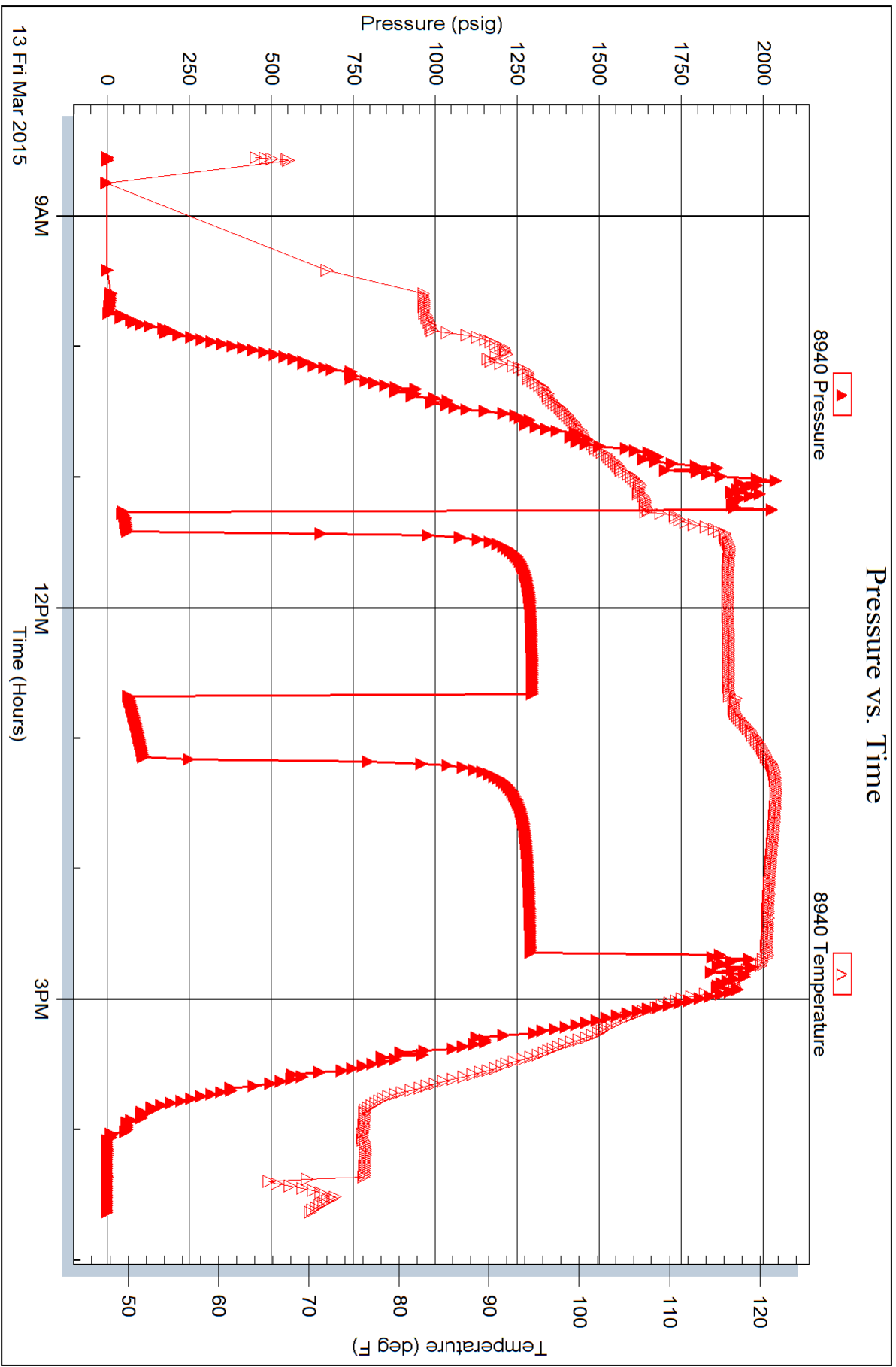


Serial #: 8940

Outside Samuel Gary Jr Associates Inc

Kevin Zerr 1-25

DST Test Number: 3



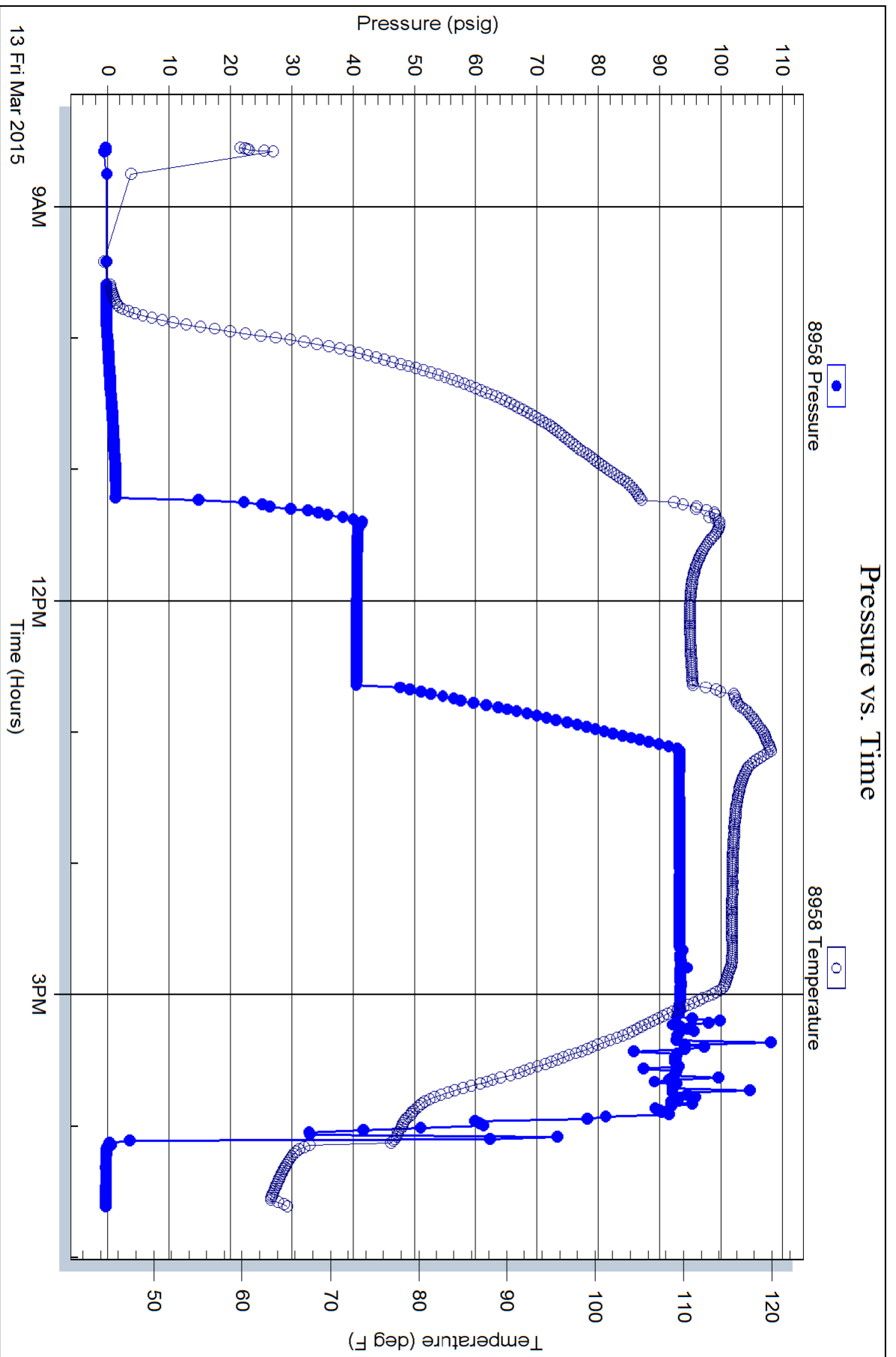
Serial #: 8958

Fluid

Samuel Gary Jr Associates Inc

Kevin Zerr 1-25

DST Test Number: 3



Trilobite Testing, Inc

Ref. No: 62421

Printed: 2015.03.13 @ 22:56:24