

GEOLOGISTS' REPORT

OPERATOR **MURFIN DRILLING COMPANY INC.**

LEASE **#1-27 FRANKLIN 'A'**

LOCATION **660' FSL 1320' FWL**

SEC. **27** TWPSP **T4S** RGE **R33W**

COUNTY **RAWLINS** STATE **KANSAS**

FIELD **WILDCAT**

CONTRACTOR **MURFIN DRILLING CO.** FIG NO. **#7**

COMMENCED **APRIL 29 2015** COMPLETED **MAY 7 2015**

MUD DISPLACED **3390'** MUD TYPE **CHEMICAL**

DRILLING TIME KEPT FROM **3740'** TO **4688'**

SAMPLES SAVED FROM **3740'** TO **4688'**

SAMPLES EXAMINED FROM **3740'** TO **4688'**

GEOLOGICAL SUPERVISION FROM **3760'** TO **4688'**

GEOLOGIST ON WELL **STEPHEN J MILLER**

FORMATION NAME **LOG** DATE **TOP DATUM** **TOP DATUM** **SAMPLE COMP NEUT-DENS SONIC LOG**

ANHYDRITE **2788** **+340** **2794** **+334**

TOPEKA LIME **3815** **-887** **3814** **-886**

HEEBNER SHALE **3979** **-851** **3981** **-853**

LANSING LIME **4022** **-894** **4022** **-894**

STARK SHALE **4293** **-1075** **4293** **-1081**

B/K C LIME **4292** **-1124** **4260** **-1132**

CHEROKEE SHALE **4454** **-1326** **4467** **-1339**

MISSISSIPPIAN **4594** **-1466** **4630** **-1502**

TOTAL DEPTH **4667** **-1539** **4688** **-1540**

ELEVATIONS

K9 **3128**

GL **3123**

ALL MEASUREMENTS FROM K.E.

CASING RECORD

Conductor

Surface **8 5/8" @ 250'**

Production **5 1/2" @ 4654'**

ELECTRICAL SURVEYS

DUAL IND

LOG TECH

SONICS

LITHOLOGY

DEPTH

DRILL TIME (MIN/FT)

REMARKS

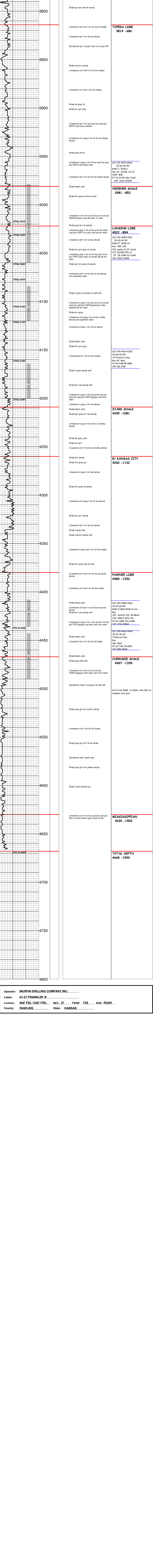
API **15-153-21131**

Drilling Fluids: **MORGAN MUD**

Drill Stem Testing: **TRILOBITE TESTING**

Gas Trailer: **NONE**

Reserve Pit Chlorides: **4200 PPM**



Operator: MURFIN DRILLING COMPANY INC.

Lease: #1-27 FRANKLIN 'A'

Location: 660' FSL 1320' FWL SEC. 27 TWPSP T4S RGE R33W

County: RAWLINS State: KANSAS