



# TEMPORARY ABANDONMENT WELL APPLICATION

OPERATOR: License# \_\_\_\_\_  
 Name: \_\_\_\_\_  
 Address 1: \_\_\_\_\_  
 Address 2: \_\_\_\_\_  
 City: \_\_\_\_\_ State: \_\_\_\_\_ Zip: \_\_\_\_\_ + \_\_\_\_\_  
 Contact Person: \_\_\_\_\_  
 Phone: ( \_\_\_\_\_ ) \_\_\_\_\_  
 Contact Person Email: \_\_\_\_\_  
 Field Contact Person: \_\_\_\_\_  
 Field Contact Person Phone: ( \_\_\_\_\_ ) \_\_\_\_\_

API No. 15- \_\_\_\_\_  
 Spot Description: \_\_\_\_\_  
 \_\_\_\_\_ - \_\_\_\_\_ - \_\_\_\_\_ - \_\_\_\_\_ Sec. \_\_\_\_\_ Twp. \_\_\_\_\_ S. R. \_\_\_\_\_  E  W  
 \_\_\_\_\_ feet from  N /  S Line of Section  
 \_\_\_\_\_ feet from  E /  W Line of Section  
 GPS Location: Lat: \_\_\_\_\_, Long: \_\_\_\_\_  
(e.g. xx.xxxxx) (e.g. -xxx.xxxxx)  
 Datum:  NAD27  NAD83  WGS84  
 County: \_\_\_\_\_ Elevation: \_\_\_\_\_  GL  KB  
 Lease Name: \_\_\_\_\_ Well #: \_\_\_\_\_  
 Well Type: (check one)  Oil  Gas  OG  WSW  Other: \_\_\_\_\_  
 SWD Permit #: \_\_\_\_\_  ENHR Permit #: \_\_\_\_\_  
 Gas Storage Permit #: \_\_\_\_\_  
 Spud Date: \_\_\_\_\_ Date Shut-In: \_\_\_\_\_

	Conductor	Surface	Production	Intermediate	Liner	Tubing
Size						
Setting Depth						
Amount of Cement						
Top of Cement						
Bottom of Cement						

Casing Fluid Level from Surface: \_\_\_\_\_ How Determined? \_\_\_\_\_ Date: \_\_\_\_\_  
 Casing Squeeze(s): \_\_\_\_\_ to \_\_\_\_\_ w / \_\_\_\_\_ sacks of cement, \_\_\_\_\_ to \_\_\_\_\_ w / \_\_\_\_\_ sacks of cement. Date: \_\_\_\_\_  
(top) (bottom) (top) (bottom)  
 Do you have a valid Oil & Gas Lease?  Yes  No  
 Depth and Type:  Junk in Hole at \_\_\_\_\_  Tools in Hole at \_\_\_\_\_ Casing Leaks:  Yes  No Depth of casing leak(s): \_\_\_\_\_  
(depth) (depth)  
 Type Completion:  ALT. I  ALT. II Depth of:  DV Tool: \_\_\_\_\_ w / \_\_\_\_\_ sacks of cement  Port Collar: \_\_\_\_\_ w / \_\_\_\_\_ sack of cement  
(depth) (depth)  
 Packer Type: \_\_\_\_\_ Size: \_\_\_\_\_ Inch Set at: \_\_\_\_\_ Feet  
 Total Depth: \_\_\_\_\_ Plug Back Depth: \_\_\_\_\_ Plug Back Method: \_\_\_\_\_

**Geological Data:**

Formation Name	Formation Top	Formation Base	Completion Information
1. _____	At: _____	to _____ Feet	Perforation Interval _____ to _____ Feet or Open Hole Interval _____ to _____ Feet
2. _____	At: _____	to _____ Feet	Perforation Interval _____ to _____ Feet or Open Hole Interval _____ to _____ Feet

UNDER PENALTY OF PERJURY I HEREBY ATTEST THAT THE INFORMATION CONTAINED HEREIN IS TRUE AND CORRECT TO THE BEST OF MY KNOWLEDGE

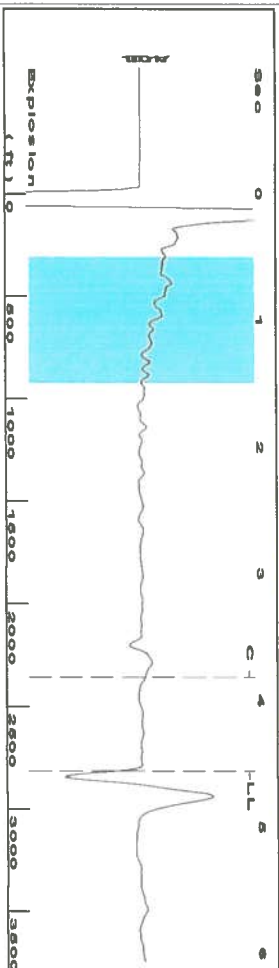
Submitted Electronically

<b>Do NOT Write in This Space - KCC USE ONLY</b>	Date Tested: _____	Results: _____	Date Plugged: _____	Date Repaired: _____	Date Put Back in Service: _____
	Review Completed by: _____ Comments: _____				
TA Approved: <input type="checkbox"/> Yes <input type="checkbox"/> Denied Date: _____					

**Mail to the Appropriate KCC Conservation Office:**

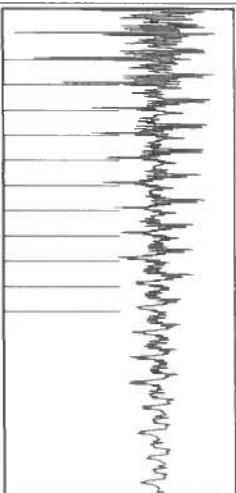
	KCC District Office #1 - 210 E. Frontview, Suite A, Dodge City, KS 67801	Phone 620.225.8888
	KCC District Office #2 / UPGS - 3450 N. Rock Road, Building 600, Suite 601, Wichita, KS 67226	Phone 316.630.4000
	KCC District Office #3 - 1500 SW Seventh Steet, Chanute, KS 66720	Phone 620.432.2300
	KCC District Office #4 - 2301 E. 13th Street, Hays, KS 67601-2651	Phone 785.625.0550

Group: Oxy Usa Ulysses Wells Well: English E-3 (acquired on: 08/01/15 16:47:13)

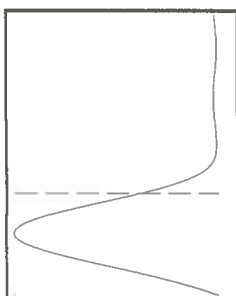


Filter Type High Pass Automatic Collar Count Yes  
 Manual Acoustic Velot 1221.58 ft/s Manual JTS/sec 19.2678  
 Time 4.558 sec  
 Joints 88,8424 ft/s  
 Depth 2816.30 ft

[ 0.5 to 1.5 (Sec) ]

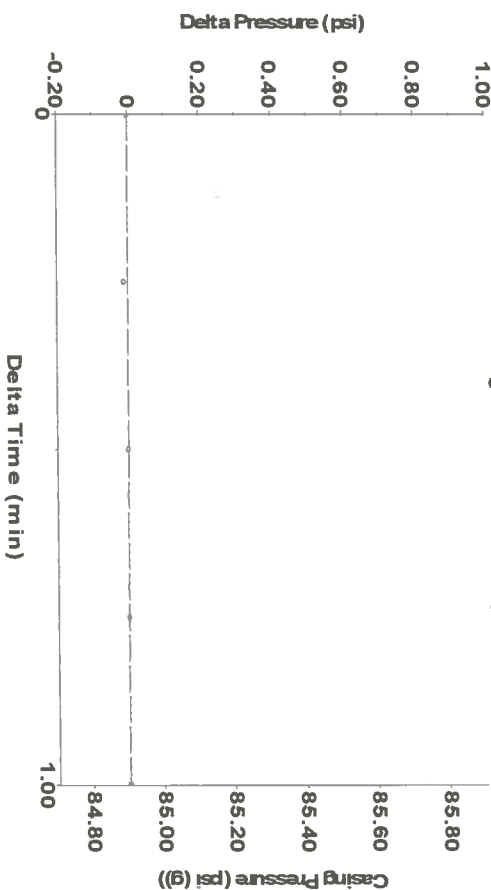


Analysis Method: Automatic



Group: Oxy Usa Ulysses Wells Well: English E-3 (acquired on: 08/01/15 16:47:13)

Casing Pressure Buildup



Change in Pressure -0.00 psi P18197  
 Change in Time 1.00 min Range 0 - ? psi

Group: Oxy Usa Ulysses Wells Well: English E-3 (acquired on: 08/01/15 16:47:13)

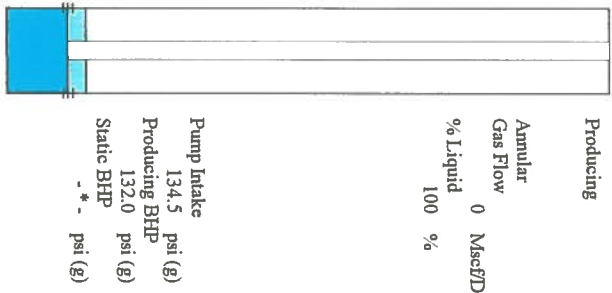
Production Current Potential Casing Pressure  
 Oil -\*- -\*- 84.9 psi (g)  
 Water -\*- -\*- BBL/D Casing Pressure Buildup  
 Gas -\*- -\*- Macf/D -0.002 psi  
 IPR Method Vogel Gas/Liquid Interface Pressure  
 PBHP/SBHP -\*- 1.00 min  
 Production Efficiency 0.0 92.1 psi (g)

Liquid Level Depth 2816.30 ft  
 Pump Intake Depth 2933.00 ft  
 Formation Depth 2926.00 ft  
 Acoustic Velocity 1235.76 ft/s

Formation Submergence 117 ft  
 Total Gaseous Liquid Column HT (TVD) 117 ft  
 Equivalent Gas Free Liquid HT (TVD) 117 ft

Acoustic Test

Saul Hernandez-Tech



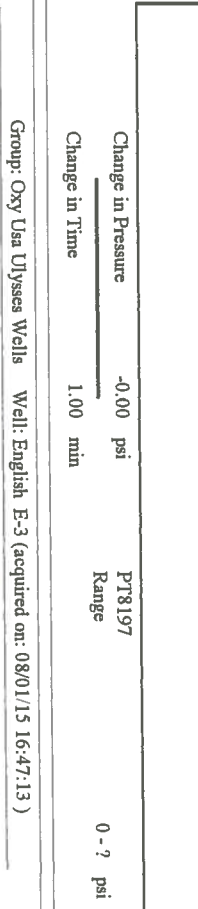
Producing Annular Gas Flow 0 Macf/D  
 % Liquid 100 %  
 Pump Intake 134.5 psi (g)  
 Producing BHP 132.0 psi (g)  
 Static BHP -\*- psi (g)

19.41

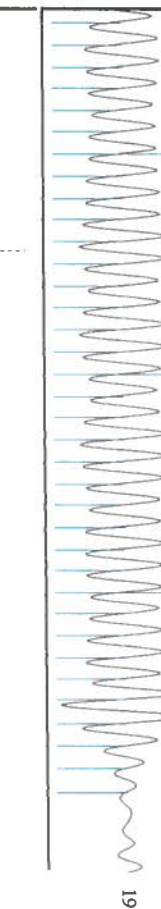


Acoustic Velocity 1235.76 ft/s  
 Joints Per Second 19.4915 ft/sec  
 Depth to liquid level 2816.3 ft  
 Automatic Collar Count Yes

19.57



Joints counted 69  
 Joints to liquid level 88,8424  
 Filter Width 17.2678  
 Time to 1st Collar 0.276



Acoustic Velocity 1235.76 ft/s  
 Joints Per Second 19.4915 ft/sec  
 Depth to liquid level 2816.3 ft  
 Automatic Collar Count Yes

Conservation Division  
District Office No. 1  
210 E. Frontview, Suite A  
Dodge City, KS 67801



Phone: 620-225-8888  
Fax: 620-225-8885  
<http://kcc.ks.gov/>

Shari Feist Albrecht, Chair  
Jay Scott Emler, Commissioner  
Pat Apple, Commissioner

Sam Brownback, Governor

August 04, 2015

Janna Burton  
Merit Energy Company, LLC  
13727 NOEL RD STE 1200  
DALLAS, TX 75240

Re: Temporary Abandonment  
API 15-067-20525-00-00  
ENGLISH E 3  
SE/4 Sec.02-29S-36W  
Grant County, Kansas

Dear Janna Burton:

"Your temporary abandonment (TA) application for the well listed above has been approved. In accordance with K.A.R. 82-3-111 the TA status of this well will expire 08/04/2016.

- \* If you return this well to service or plug it, please notify the District Office.
- \* If you sell this well you are required to file a Transfer of Operator form, T-1.
- \* If the well will remain temporarily abandoned, you must submit a new TA application, CP-111, before 08/04/2016.

You may contact me at the number above if you have questions.

Very truly yours,

Michael Maier"