



**TRILOBITE  
TESTING, INC.**

# DRILL STEM TEST REPORT

Samuel Gary Jr. & Associates, Inc.

**3-4S-36W Rawlins, KS**

1515 Wynkoop STE #700  
Denver, CO 80202

**Fisher Cattle Co#2-3**

Job Ticket: 60897

**DST#: 1**

ATTN: Clayton Camozzi

Test Start: 2015.03.16 @ 02:04:00

## GENERAL INFORMATION:

Formation: **LKC "A"**

Deviated: No Whipstock: ft (KB)

Time Tool Opened: 05:47:00

Time Test Ended: 10:11:30

Test Type: Conventional Bottom Hole (Initial)

Tester: Kevin Mack

Unit No: 82

**Interval: 4108.00 ft (KB) To 4123.00 ft (KB) (TVD)**

Total Depth: 4123.00 ft (KB) (TVD)

Hole Diameter: 7.88 inches Hole Condition: Good

Reference Elevations: 3206.00 ft (KB)

3201.00 ft (CF)

KB to GR/CF: 5.00 ft

**Serial #: 8874 Inside**

Press@RunDepth: 15.97 psig @ 4109.00 ft (KB)

Start Date: 2015.03.16

End Date:

2015.03.16

Start Time: 02:05:00

End Time:

10:11:30

Capacity: 8000.00 psig

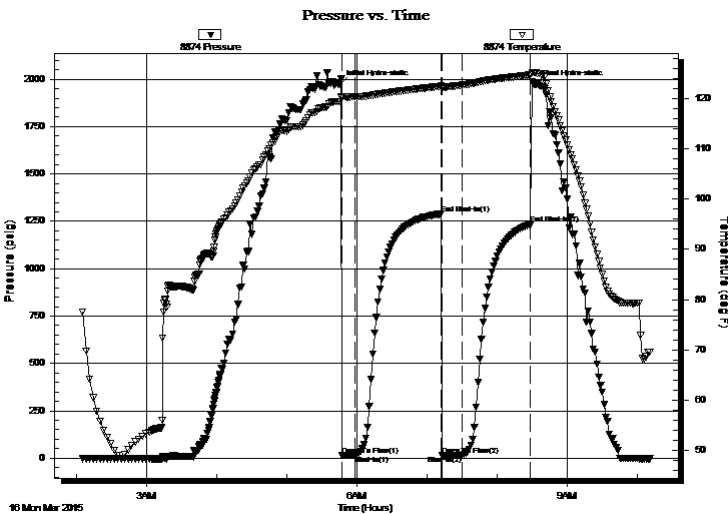
Last Calib.: 2015.03.16

Time On Btm: 2015.03.16 @ 05:45:00

Time Off Btm: 2015.03.16 @ 08:32:30

**TEST COMMENT:** 10 - IF- Weak Surface Blow did not build or die.  
75 - IS- No Return  
15 - FF- Surface blow died in 15 min.  
60 - FS- No Return

## PRESSURE SUMMARY



Time (Min.)	Pressure (psig)	Temp (deg F)	Annotation
0	1971.75	119.40	Initial Hydro-static
2	14.16	120.07	Open To Flow (1)
13	15.99	120.31	Shut-In(1)
87	1288.98	122.45	End Shut-In(1)
88	16.15	122.10	Open To Flow (2)
105	15.97	122.66	Shut-In(2)
164	1234.42	124.64	End Shut-In(2)
168	1970.37	125.17	Final Hydro-static

## Recovery

Length (ft)	Description	Volume (bbl)
3.00	Mud 100M	0.01

## Gas Rates

Choke (inches)	Pressure (psig)	Gas Rate (Mcf/d)





**TRILOBITE  
TESTING, INC**

# DRILL STEM TEST REPORT

**FLUID SUMMARY**

Samuel Gary Jr. & Associates, Inc.

**3-4S-36W Rawlins, KS**

1515 Wynkoop STE #700  
Denver, CO 80202

**Fisher Cattle Co#2-3**

Job Ticket: 60897

**DST#: 1**

ATTN: Clayton Camozzi

Test Start: 2015.03.16 @ 02:04:00

## Mud and Cushion Information

Mud Type: Gel Chem

Cushion Type:

Oil API:

deg API

Mud Weight: 9.00 lb/gal

Cushion Length:

ft

Water Salinity:

ppm

Viscosity: 58.00 sec/qt

Cushion Volume:

bbbl

Water Loss: 5.60 in<sup>3</sup>

Gas Cushion Type:

Resistivity: 0.00 ohm.m

Gas Cushion Pressure:

psig

Salinity: 1000.00 ppm

Filter Cake: 1.00 inches

## Recovery Information

Recovery Table

Length ft	Description	Volume bbl
3.00	Mud 100M	0.015

Total Length: 3.00 ft      Total Volume: 0.015 bbl

Num Fluid Samples: 0

Num Gas Bombs: 0

Serial #:

Laboratory Name:

Laboratory Location:

Recovery Comments:

Serial #: 8874

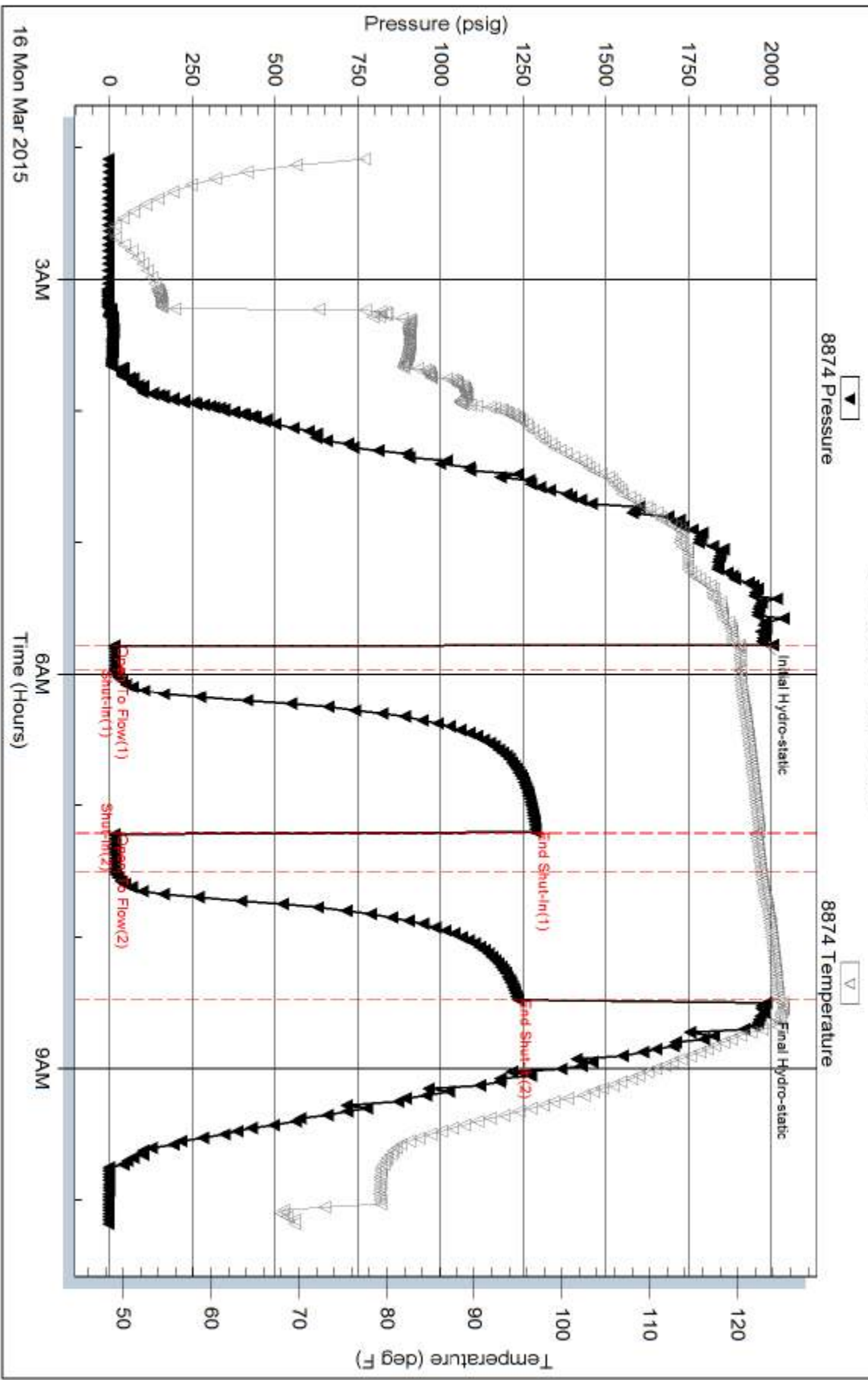
Inside

Samuel Gary Jr. & Associates, Inc.

Fisher Cattle Co#2-3

DST Test Number: 1

### Pressure vs. Time



Serial #: 8520

Fluid

Samuel Gary Jr. & Associates, Inc.

Fisher Cattle Co#2-3

DST Test Number: 1

