



GEOLOGIST'S REPORT  
DRILL TIME &  
SAMPLE LOG

COMPANY **COBALT ENERGY, LLC**  
LEASE **Haag 'B' #1-19**  
FIELD **Wildcat**

LOCATION **2077' FSL & 2114' FWL**  
SEC **19** TWP **19S** RGE **27W**  
COUNTY **Lane** STATE **KS**  
CONTRACTOR **Martin Drilling Co., Rig #16**

RTD **4666'** LTD **4665'**  
MUD UP **7'** TYPE MUD **Chemical**  
SAMPLES SAVED FROM **3900'** TO **RTD**  
DRILLING TIME KEPT FROM **3800'** TO **RTD**  
SAMPLES EXAMINED FROM **3800'** TO **RTD**

GEOLOGICAL SUPERVISION FROM **3880'** TO **RTD**  
GEOL OICIST ON WELL **Corey N. Baker**

FORMATION TOPS **ELECTRIC LOG**  
Anhydrite **2053 (+690)**  
Base of Anhydrite **2081 (+662)**  
Heebner **3995 (-1212)**  
Lansing **3999 (-1256)**  
Stark **4272 (-1529)**  
BKC **4360 (-1617)**  
Cherokee Shale **4512 (-1769)**  
Mississippian **4631 (-1888)**  
RTD **4666 (-1923)**  
LTD **4665 (-1922)**

CONDUCTOR **CASING**  
Surface **8 5/8" @ 222'**  
Production **None**  
Electrical Surveys **None**  
Radiation Guard Log **None**

ELEVATIONS  
KB **2743'**  
DF \_\_\_\_\_

MEASUREMENTS ARE ALL FROM **KB**

GL **2738'**  
Measurements are All From **KB**

Production **None**

Electrical Surveys **None**

Radiation Guard Log **None**

Geological Services  
Pioneer Energy Services  
Corey N. Baker

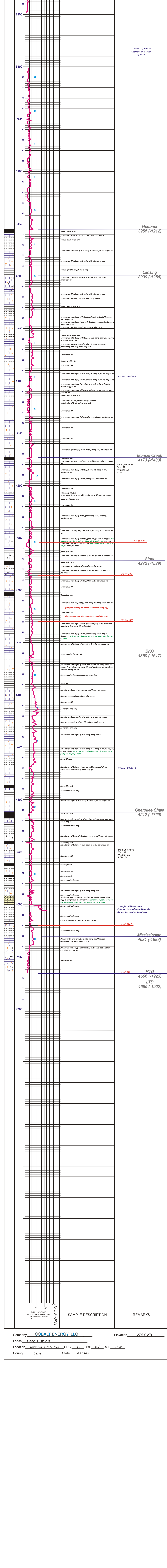
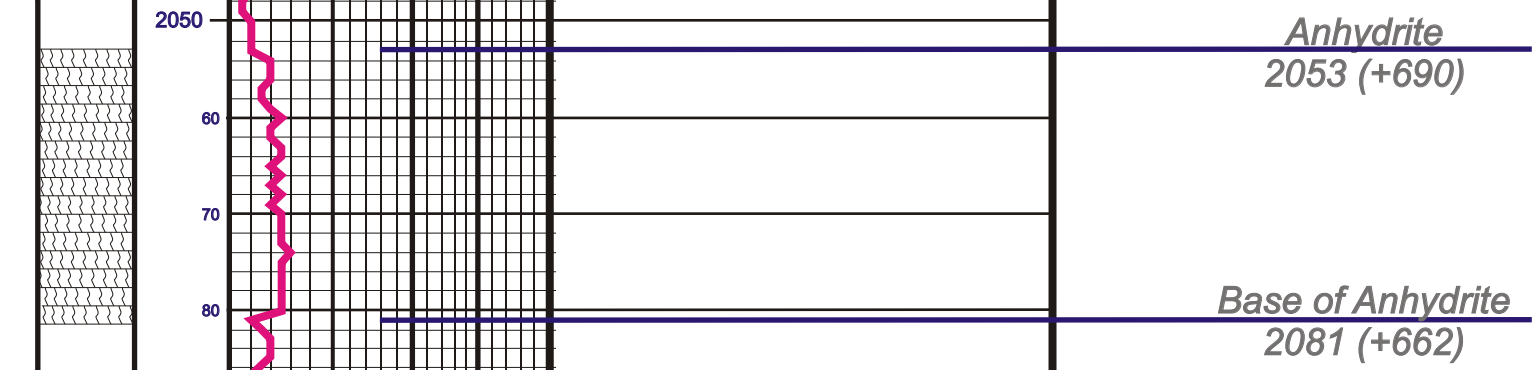
Section  
Anhydrite  
Sandsstone  
Limestone  
Shale  
Carb Sh  
Cherty LS  
Chert  
Dolomite

REMARKS **Due to the negative structure and lack of shows, it was recommended that the Haag 'B' #1-19 Be plugged and abandoned as a dry hole.**

Respectfully Submitted,  
Corey Baker  
Vice President - Exploration  
Cobalt Energy, LLC

API #15-101-22563-00-00

LEGEND



Company **COBALT ENERGY, LLC** Elevation **2743' KB**  
Lease **Haag 'B' #1-19**  
Location **2077' FSL & 2114' FWL** SEC. **19** TWP **19S** RGE **27W**  
County **Lane** State **Kansas**