

OPERATOR

Company: MIKE KELSO OIL, INC.
 Address: PO BOX 467
 CHASE, KANSAS 67524-0467

Contact Geologist: MIKE KELSO
 Contact Phone Nbr: 620-938-2943
 Well Name: MIKE KELSO OIL, INC.
 Location: SW NE NW NE SEC. 23-T10S-R21W
 API: 15-065-24,104-00-00
 Pool: IN FIELD
 State: KANSAS
 Field: COOPER
 Country: USA

Scale 1:240 Imperial

Well Name: MIKE KELSO OIL, INC.
 Surface Location: SW NE NW NE SEC. 23-T10S-R21W
 Bottom Location:
 API: 15-065-24,104-00-00
 License Number: 31528
 Spud Date: 6/27/2015 Time: 4:15 AM
 Region: GRAHAM COUNTY
 Drilling Completed: 7/2/2015 Time: 7:05 PM
 Surface Coordinates: 500' FNL & 1950' FEL
 Bottom Hole Coordinates:
 Ground Elevation: 2188.00ft
 K.B. Elevation: 2195.00ft
 Logged Interval: 3000.00ft To: 3810.00ft
 Total Depth: 3809.00ft
 Formation: ARBUCKLE
 Drilling Fluid Type: CHEMICAL/FRESH WATER GEL

SURFACE CO-ORDINATES

Well Type: Vertical
 Longitude: -99.6302622
 Latitude: 39.1748799
 N/S Co-ord: 500' FNL
 E/W Co-ord: 1950' FEL

LOGGED BY

Company: SOLUTIONS CONSULTING, INC.
 Address: 108 W 35TH
 HAYS, KS 67601

Phone Nbr: (785) 639-1337
 Logged By: GEOLOGIST Name: HERB DEINES

CONTRACTOR

Contractor: SKYTOP DRILLING LLC
 Rig #: 1
 Rig Type: MUD ROTARY
 Spud Date: 6/27/2015 Time: 4:15 AM
 TD Date: 7/2/2015 Time: 7:05 PM
 Rig Release: 7/3/2015 Time: 5:00 PM

ELEVATIONS

K.B. Elevation: 2195.00ft Ground Elevation: 2188.00ft
 K.B. to Ground: 7.00ft

NOTES

RECOMMENDATION TO RUN PRODUCTION CASING BASED ON NUMEROUS SHOWS IN TOPEKA, LKC AND ARBUCKLE AND FAVORABLE STRUCTURE.

NO DRILL STEM TESTS WERE RAN ON THIS WELL.

PIERCE # 4	PIERCE # 1	PIERCE # 2
SW NE NW NE	NW NW NE	SE NW NE
SEC.23-10S-21W	SEC.23-10-21W	SEC.27-15-15W
2188'GL 2195'KB	KB 2173'	KB 2191'

<u>FORMATION</u>	<u>LOG TOPS</u>	<u>LOG TOPS</u>	<u>LOG TOPS</u>
Anhydrite top	1653+ 542		
Anhydrite base	1690+ 505		
Topeka	3198-1003		-1009
Heebner Sh.	3400-1205	-1213	-1211
Toronto	3425-1230		-1236
LKC	3440-1245	-1252	-1254
BKC	3667-1472	-1483	-1477
Arbuckle	3736-1541	-1551	-1546
RTD	3809-1614	-1566	-1551

SUMMARY OF DAILY ACTIVITY

6-27-15 Spud 4:15AM, set 8 5/8" surface casing to 314' w/225 sxs Common 2%Gel 3%CC, slope 1/2 degree, plug down 5:30PM

6-28-15 686', drill plug 1:30AM

6-29-15 1691', drilling











6-30-15 2590', drilling

7-01-15 3100', drilling

7-02-15 3600', drilling, RTD 3809' @7:05PM, ST 25 stds, CCH, TOWB

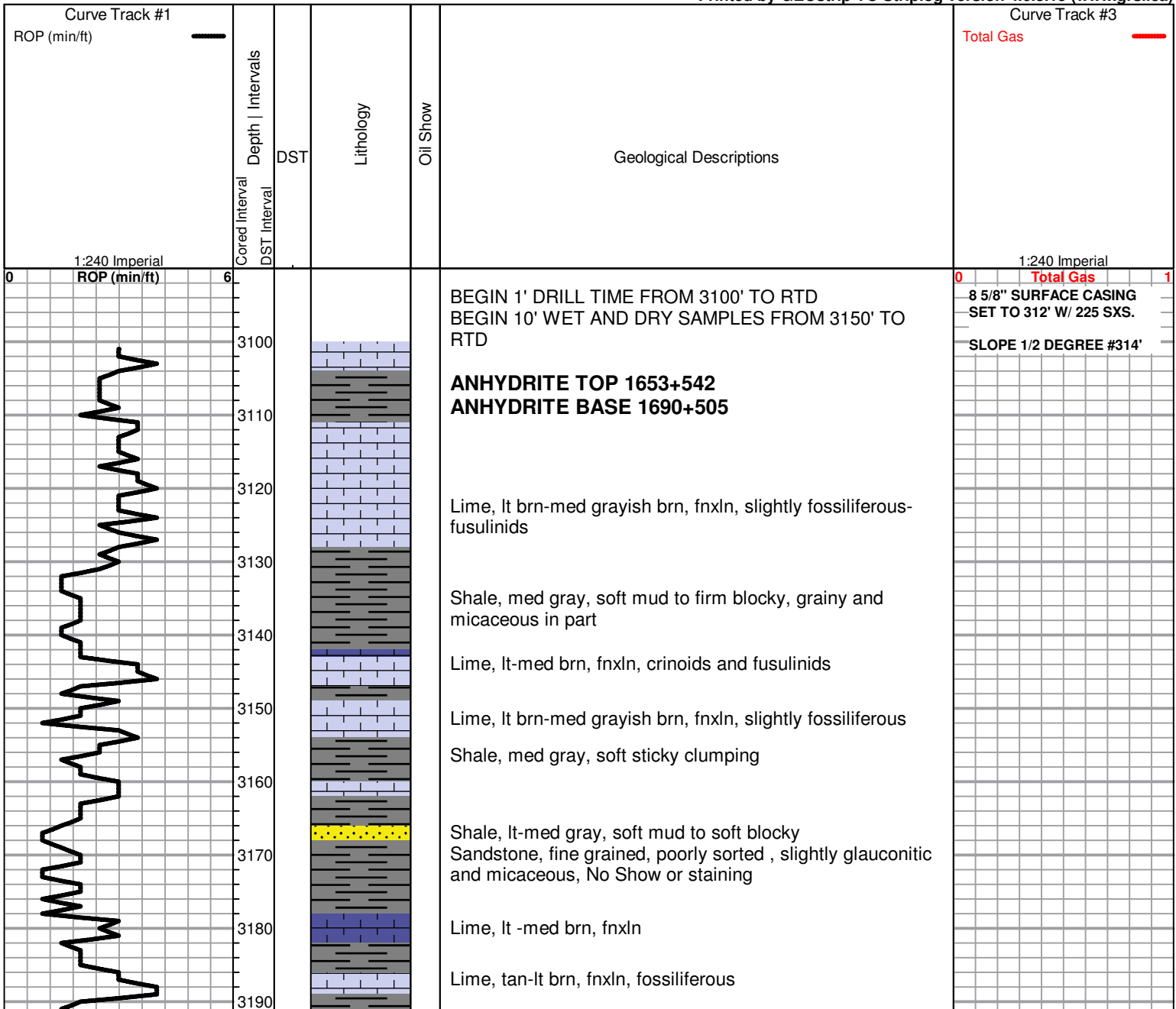
7-03-15 3809', logs, TIWB, LDDP, run 5 1/2" production casing w/ DV Tool in Anhydrite

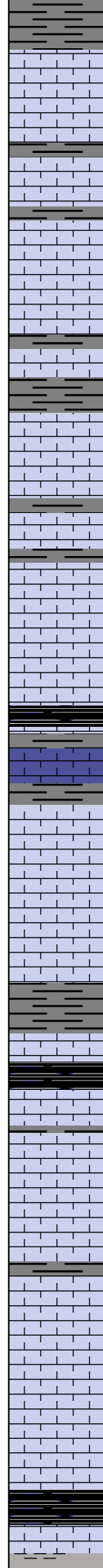
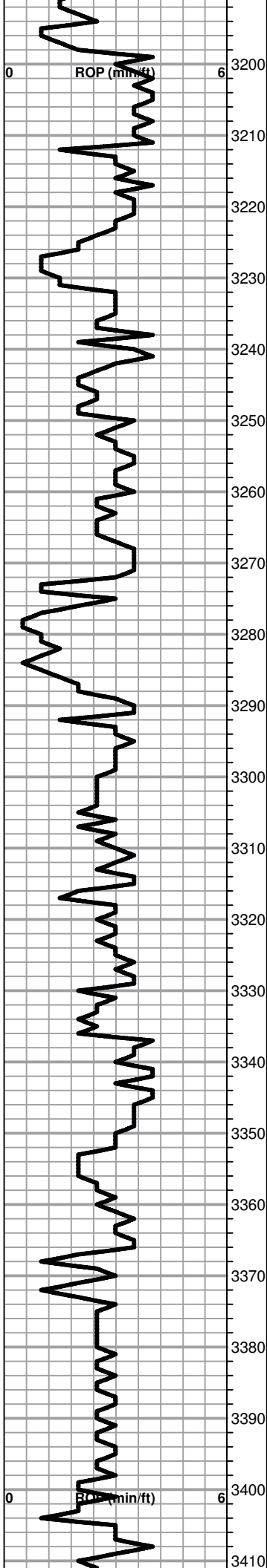
ROCK TYPES

 Clystgy	 Lmst fw<7	 shale, gry	 Ss
 Chtcongl	 Lmst fw7>	 Carbon Sh	
 Dolprim	 Lscongl	 shale, red	

ACCESSORIES

MINERAL
 ▲ Chert White





TOPEKA 3198-1003

Lime, lt brn-med grayish brn, fn-vfxln

Lime, crm-lt brn, fn-vfxln

Lime, crm-lt brn, fn-vfxln

Lime, lt gray fnxln grading into lt brn, granular limestone with fine interxln porosity with scattered pinpoint vuggy porosity. scattered to saturated stain, fair odor, NFO

Lime, lt brn-lt gray, fnxln with gray mottling in part

Lime, lt brn-lt gray, fnxln mixed with calcareous gray shale

Lime, crm-lt brn, fn-vfxln

Lime, crm-lt brn, fn-vfxln, micro fossils in part, cemented

Lime, lt-med brn, fn-vfxln

Lime, med brn, fnxln-granular, NS

Lime, med brn, granular, slightly fossiliferous, NS, few chips with slight chalky matrix

Shale, black carbonaceous, blocky, fissile

Lime, lt brn, fnxln

Shale, lt gray, soft mud

Lime, crm-lt brn, fnxln, slight bedded chalk, firm

Lime, lt-med brn, fnxln, scattered fusulinids, NS

Lime, lt-med brn, fnxln-slightly granular in part

Lime, med brn, fnxln

Shale, black carbonaceous, blocky

Lime, lt-med brn, fnxln

Lime, lt-med brn, fnxln

Lime, crm-med brn, fnxln, slightly fossiliferous

Lime, lt brn, slight bedded chalk with lt white wash, NS

Lime, crm-tan, fnxln, moderate bedded chalk

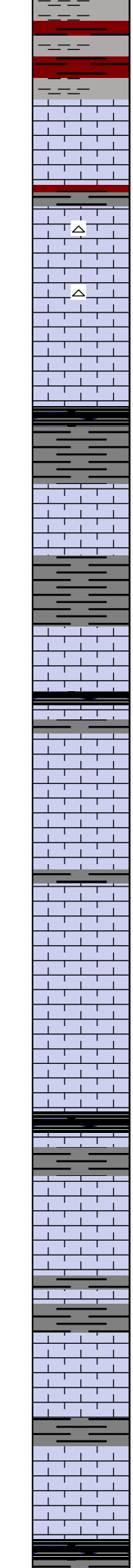
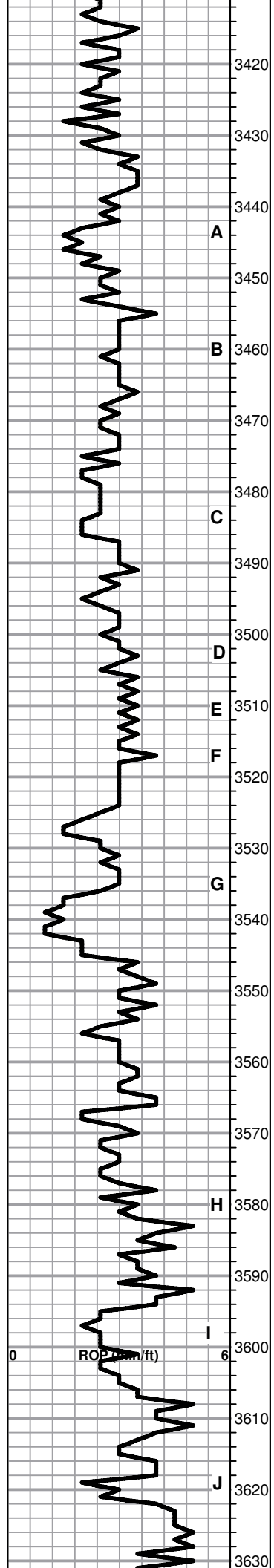
HEEBNER SHALE 3400-1205

Shale, black carbonaceous, fissile, blocky

Lime, lt-med brn, fn-vfxln

0 Total Gas 1

0 Total Gas 1



Shale, dove gray, soft sticky with mix of reddish brn soft shale

TORONTO 3425-1230
Lime, tan-lt brn, fnxln, slightly granular with bed chalk, NS

Lime, lt brn, fnxln

LKC 3440-1245
Lime, crm, fn-vfxln, spotty lt staining in poorly development mostly dense lime. V lt to no odor, NFO

Lime, crm-tan, fn-vfxln

Lime, crm-tan, fn-vfxln

Shale, gray-black carbonaceous, fissile, blocky

Lime, crm-lt brn, mix of fossil fragments, oolitic/oomoldic and fine granular with interxln porosity, lt spotty staining, very lt odor, NFO

Shale, reddish brn-med gray, moderately firm, blocky with slivers in part

Lime, crm, fnxln

Shale, black carbonaceous
Lime, lt gray, fnxln

Lime, lt brn, oolitic/oomoldic in part, fair to good saturated staining with very lt odor, NFO

Lime, lt brn, fnxln

Lime, crm, fnxln-granular, bedded chalk, NS

Lime, white-crm, fn-vfxln, slight bedded chalk

Lime, white-crm-lt brn, fnxln

Shale, med gray-black carbonaceous, blocky

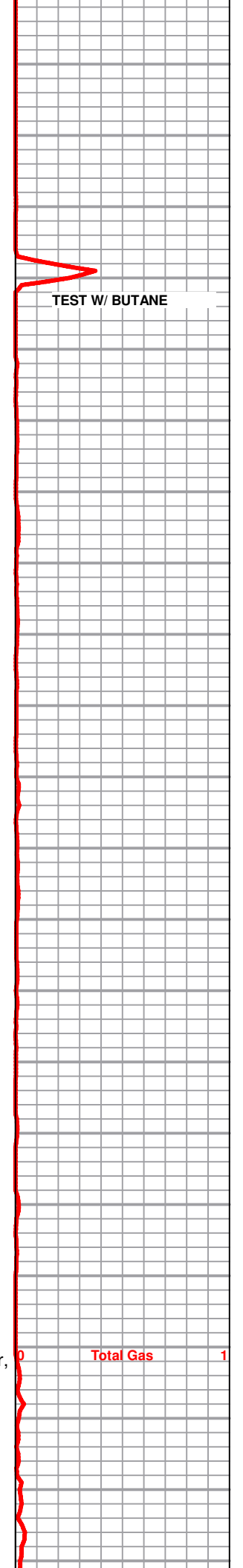
Lime, crm with tint of lt gray in part, fnxln, NS

Lime, crm, fn-vfxln

Lime, lt brn, fnxln-fine granular with very fine interxln porosity, lt surface sheen on saturated chips, NFO, No odor, may have some fracturing

Lime, crm-lt brn, mostly fnxln with few chips oolitic/oomoldic, with lt spotty staining, NFO, No Odor, appears poorly developed

Shale, gray-black, blocky



TEST W/ BUTANE

Total Gas

1

