



**TRILOBITE
TESTING, INC**

DRILL STEM TEST REPORT

SGA
1515 Wykoop
STE 700
Denver Co. 80202
ATTN: Chris Mitchel

6-2S-36W Rawlins KS

Krueger Trust #2-6

Job Ticket: 62318 **DST#: 3**

Test Start: 2015.03.31 @ 18:34:00

GENERAL INFORMATION:

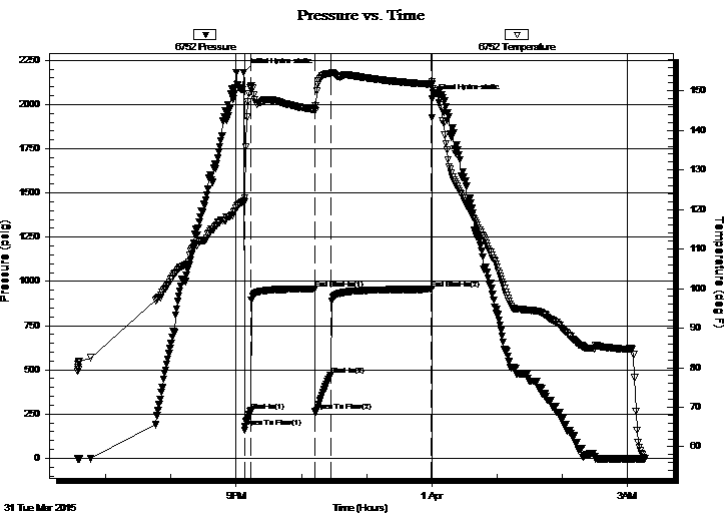
Formation: **LKC " G "**
 Deviated: No Whipstock: ft (KB)
 Test Type: Conventional Bottom Hole (Reset)
 Time Tool Opened: 21:07:50
 Tester: Ryan Nichols
 Time Test Ended: 03:16:49
 Unit No: 78
 Interval: **4392.00 ft (KB) To 4410.00 ft (KB) (TVD)**
 Reference Elevations: 3332.00 ft (KB)
 Total Depth: 4410.00 ft (KB) (TVD) 3327.00 ft (CF)
 Hole Diameter: 7.88 inches Hole Condition: Good KB to GR/CF: 5.00 ft

Serial #: 6752

Inside

Press@RunDepth: 470.71 psig @ 4397.00 ft (KB) Capacity: 8000.00 psig
 Start Date: 2015.03.31 End Date: 2015.04.01 Last Calib.: 2015.04.01
 Start Time: 18:34:01 End Time: 03:16:49 Time On Btm: 2015.03.31 @ 21:07:00
 Time Off Btm: 2015.04.01 @ 00:00:09

TEST COMMENT: 5 IF - 2" blow built to BoB @ 1 1/2 mins
 60 ISI - Surface blow started @ 6 mins built to 1"
 15 FF - 1" blow built to BoB @ 1 min 45 secs
 90 FSI - Surface blow started @ 3 mins built to 8"



PRESSURE SUMMARY

Time (Min.)	Pressure (psig)	Temp (deg F)	Annotation
0	2181.49	122.09	Initial Hydro-static
1	178.20	121.90	Open To Flow (1)
7	267.90	151.05	Shut-In(1)
66	957.76	145.29	End Shut-In(1)
66	266.82	145.08	Open To Flow (2)
80	470.71	154.47	Shut-In(2)
173	955.53	151.66	End Shut-In(2)
174	2030.99	151.93	Final Hydro-static

Recovery

Length (ft)	Description	Volume (bbl)
564.00	OCW - 2%o - 98%W	6.22
259.00	GOMCW - 30%G - 10%o - 20%M - 40%W	3.63
63.00	GMMCO - 10%G - 30%W - 20%M - 40%o	0.88
189.00	GO - 30%G - 70%o	2.65
0.00	100' GIP	0.00

* Recovery from multiple tests

Gas Rates

Choke (inches)	Pressure (psig)	Gas Rate (Mcf/d)



**TRILOBITE
TESTING, INC**

DRILL STEM TEST REPORT

SGA
1515 Wykoop
STE 700
Denver Co. 80202
ATTN: Chris Mitchel

6-2S-36W Rawlins KS
Krueger Trust #2-6
Job Ticket: 62318 **DST#: 3**
Test Start: 2015.03.31 @ 18:34:00

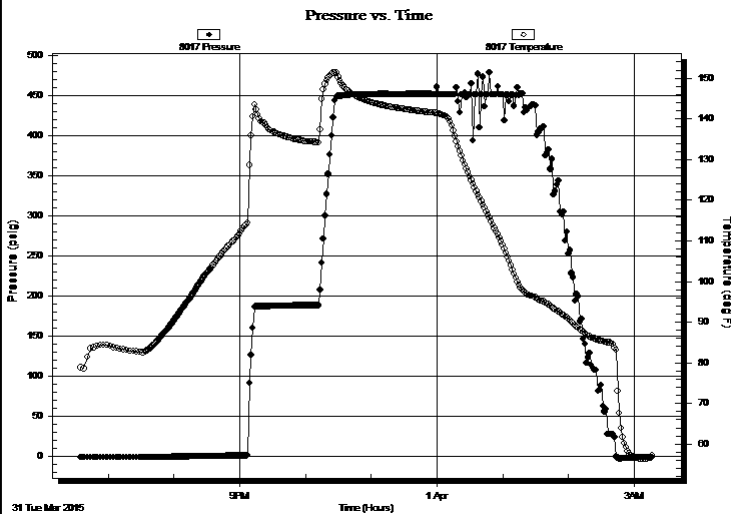
GENERAL INFORMATION:

Formation: **LKC " G "**
Deviated: No Whipstock: ft (KB) Test Type: Conventional Bottom Hole (Reset)
Time Tool Opened: 21:07:50 Tester: Ryan Nichols
Time Test Ended: 03:16:49 Unit No: 78
Interval: 4392.00 ft (KB) To 4410.00 ft (KB) (TVD) Reference Elevations: 3332.00 ft (KB)
Total Depth: 4410.00 ft (KB) (TVD) 3327.00 ft (CF)
Hole Diameter: 7.88 inches Hole Condition: Good KB to GR/CF: 5.00 ft

Serial #: 8017 Fluid
Press@RunDepth: psig @ 4365.00 ft (KB) Capacity: 8000.00 psig
Start Date: 2015.03.31 End Date: 2015.04.01 Last Calib.: 2015.04.01
Start Time: 18:35:00 End Time: 03:16:30 Time On Btm:
Time Off Btm:

TEST COMMENT: 5 IF - 2" blow built to BoB @ 1 1/2 mins
60 ISI - Surface blow started @ 6 mins built to 1"
15 FF - 1" blow built to BoB @ 1 min 45 secs
90 FSI - Surface blow started @ 3 mins built to 8"

PRESSURE SUMMARY



Time (Min.)	Pressure (psig)	Temp (deg F)	Annotation

Recovery

Length (ft)	Description	Volume (bbl)
564.00	OCW - 2%o - 98%W	6.22
259.00	GOMCW - 30%G - 10%o - 20%M - 40%W	3.63
63.00	GMMCO - 10%G - 30%W - 20%M - 40%o	0.88
189.00	GO - 30%G - 70%o	2.65
0.00	100' GIP	0.00

Gas Rates

Choke (inches)	Pressure (psig)	Gas Rate (Mcf/d)

* Recovery from multiple tests



**TRILOBITE
TESTING, INC**

DRILL STEM TEST REPORT

FLUID SUMMARY

SGA

6-2S-36W Rawlins KS

1515 Wykoop
STE 700
Denver Co. 80202
ATTN: Chris Mitchel

Krueger Trust #2-6

Job Ticket: 62318 **DST#: 3**
Test Start: 2015.03.31 @ 18:34:00

Mud and Cushion Information

Mud Type: Gel Chem	Cushion Type:	Oil API:	deg API
Mud Weight: 9.00 lb/gal	Cushion Length: ft	Water Salinity:	ppm
Viscosity: 58.00 sec/qt	Cushion Volume: bbl		
Water Loss: 7.20 in ³	Gas Cushion Type:		
Resistivity: ohm.m	Gas Cushion Pressure: psig		
Salinity: 1200.00 ppm			
Filter Cake: 1.00 inches			

Recovery Information

Recovery Table

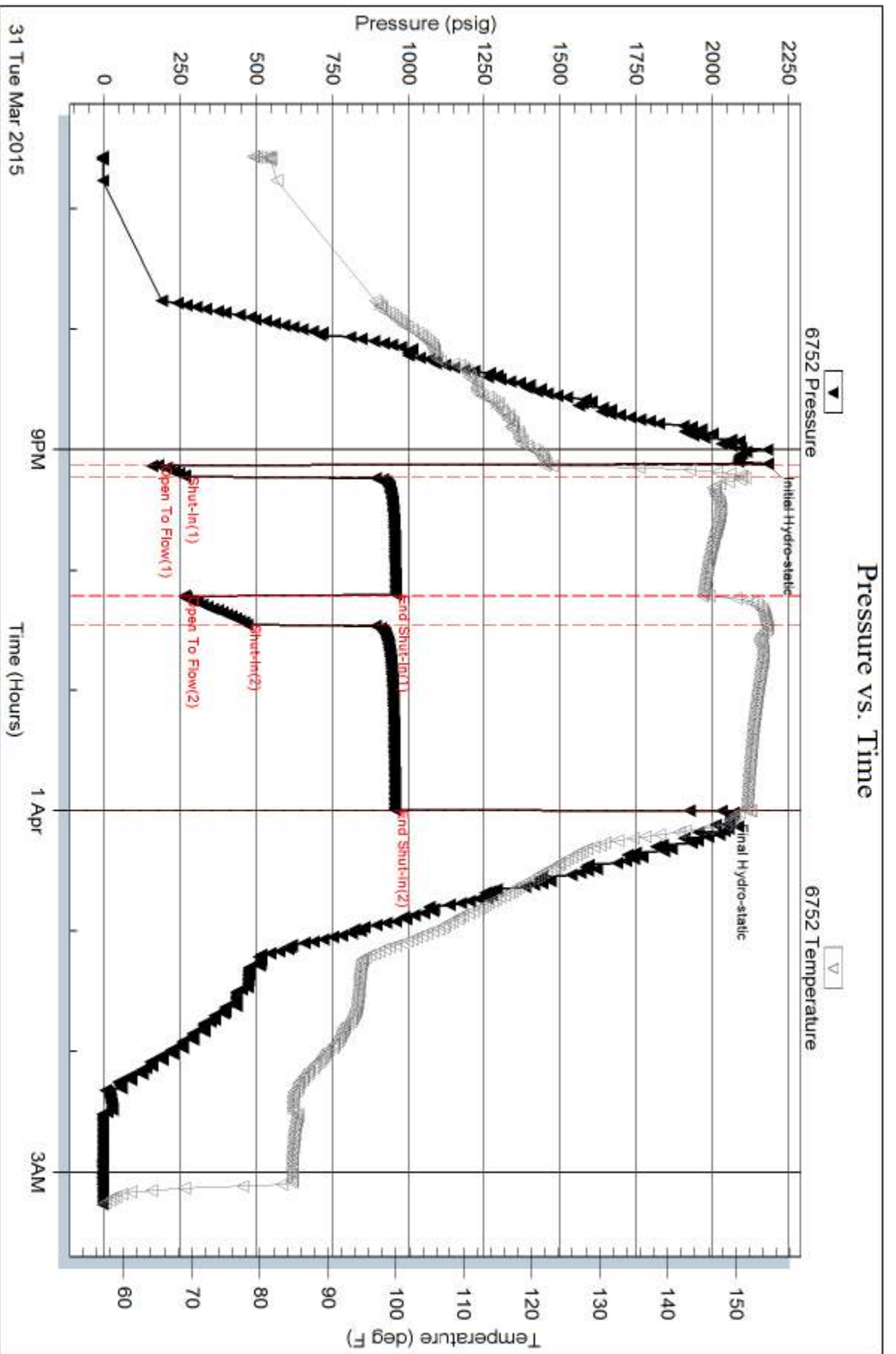
Length ft	Description	Volume bbl
564.00	OCW - 2%o - 98%W	6.217
259.00	GOMCW - 30%G - 10%o - 20%M - 40%W	3.633
63.00	GMWCO - 10%G - 30%W - 20%M - 40%o	0.884
189.00	GO - 30%G - 70%o	2.651
0.00	100' GIP	0.000

Total Length: 1075.00 ft Total Volume: 13.385 bbl

Num Fluid Samples: 0 Num Gas Bombs: 0 Serial #:

Laboratory Name: Laboratory Location:

Recovery Comments: OIL API - 28 @ 70 DEG F = 27 COR 60 DEG F
RW = .640 @ 57 DEG F
CHLORIDES = 13,000 PPM



Serial #: 8017

Fluid

SGA

Krueger Trust #2-6

DST Test Number: 3

