



# TRILOBITE TESTING, INC.

## DRILL STEM TEST REPORT

Shelby Resources LLC.  
2717 Canal BLVD Suite C  
Hays Ks, 67601  
ATTN: Jeremy Schwartz

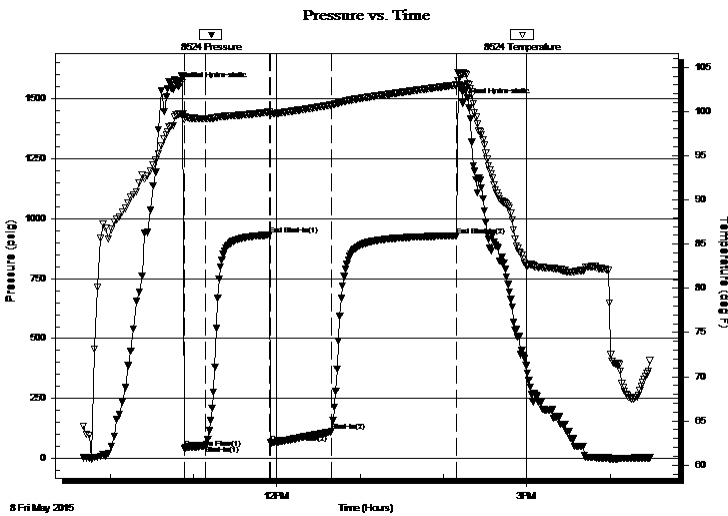
**15/18s/14w/Barton**  
**Jerry's Uint #1-15**  
Job Ticket: 61995      **DST#: 2**  
Test Start: 2015.05.08 @ 09:40:00

### GENERAL INFORMATION:

Formation: **Lansing "G"**  
Deviated: No Whipstock:                      ft (KB)      Test Type: Conventional Bottom Hole (Initial)  
Time Tool Opened: 10:53:30      Tester: Shane Konzem  
Time Test Ended: 16:28:30      Unit No: 56/26/Great Bend  
**Interval: 3244.00 ft (KB) To 4274.00 ft (KB) (TVD)**      Reference Elevations: 1939.00 ft (KB)  
Total Depth: 3274.00 ft (KB) (TVD)      1926.00 ft (CF)  
Hole Diameter: 7.88 inches Hole Condition: Poor      KB to GR/CF: 13.00 ft

**Serial #: 8524      Inside**  
Press @ Run Depth: 112.75 psig @ 3270.00 ft (KB)      Capacity: 8000.00 psig  
Start Date: 2015.05.08      End Date: 2015.05.08      Last Calib.: 2015.05.08  
Start Time: 09:41:00      End Time: 16:28:30      Time On Btm: 2015.05.08 @ 10:49:30  
Time Off Btm: 2015.05.08 @ 14:14:00

**TEST COMMENT:** 1st Open/ 15 Minutes. Good blow built to bottom of 5 gallon bucket in 3 minutes and 30 seconds.  
1st Shut In/ 45 Minutes. No blow back.  
2nd Open/ 45 Minutes. Strong blow built to bottom of 5 gallon bucket in 30 seconds.  
2nd Shut In/ 90 Minutes. Good blow back built to bottom of 5 gallon bucket in 27 minutes and 15 seconds.



### PRESSURE SUMMARY

Time (Min.)	Pressure (psig)	Temp (deg F)	Annotation
0	1552.31	99.71	Initial Hydro-static
4	40.31	99.08	Open To Flow (1)
19	53.00	99.20	Shut-In(1)
65	932.08	99.93	End Shut-In(1)
66	64.83	99.76	Open To Flow (2)
110	112.75	100.75	Shut-In(2)
200	929.50	102.99	End Shut-In(2)
205	1482.66	104.14	Final Hydro-static

### Recovery

Length (ft)	Description	Volume (bbl)
0.00	630 feet Gas in Pipe	0.00
315.00	100% Clean Gassy Oil	3.87
126.00	Gassy Oil cut Mud	1.77
0.00	20% gas, 30% oil, 50% mud	0.00

### Gas Rates

	Choke (inches)	Pressure (psig)	Gas Rate (Mcf/d)



**TRILOBITE  
TESTING, INC.**

# DRILL STEM TEST REPORT

**FLUID SUMMARY**

Shelby Resources LLC.

**15/18s/14w/Barton**

2717 Canal BLVD Suite C  
Hays Ks, 67601

**Jerry's Uint #1-15**

Job Ticket: 61995

**DST#: 2**

ATTN: Jeremy Schwartz

Test Start: 2015.05.08 @ 09:40:00

## Mud and Cushion Information

Mud Type: Gel Chem

Cushion Type:

Oil API:

40 deg API

Mud Weight: 9.00 lb/gal

Cushion Length:

ft

Water Salinity:

ppm

Viscosity: 52.00 sec/qt

Cushion Volume:

bbbl

Water Loss: 7.98 in<sup>3</sup>

Gas Cushion Type:

Resistivity: ohm.m

Gas Cushion Pressure:

psig

Salinity: 4000.00 ppm

Filter Cake: 1.00 inches

## Recovery Information

Recovery Table

Length ft	Description	Volume bbbl
0.00	630 feet Gas in Pipe	0.000
315.00	100% Clean Gassy Oil	3.872
126.00	Gassy Oil cut Mud	1.767
0.00	20% gas, 30% oil, 50% mud	0.000

Total Length: 441.00 ft

Total Volume: 5.639 bbl

Num Fluid Samples: 0

Num Gas Bombs: 0

Serial #:

Laboratory Name:

Laboratory Location:

Recovery Comments:

Serial #: 8524

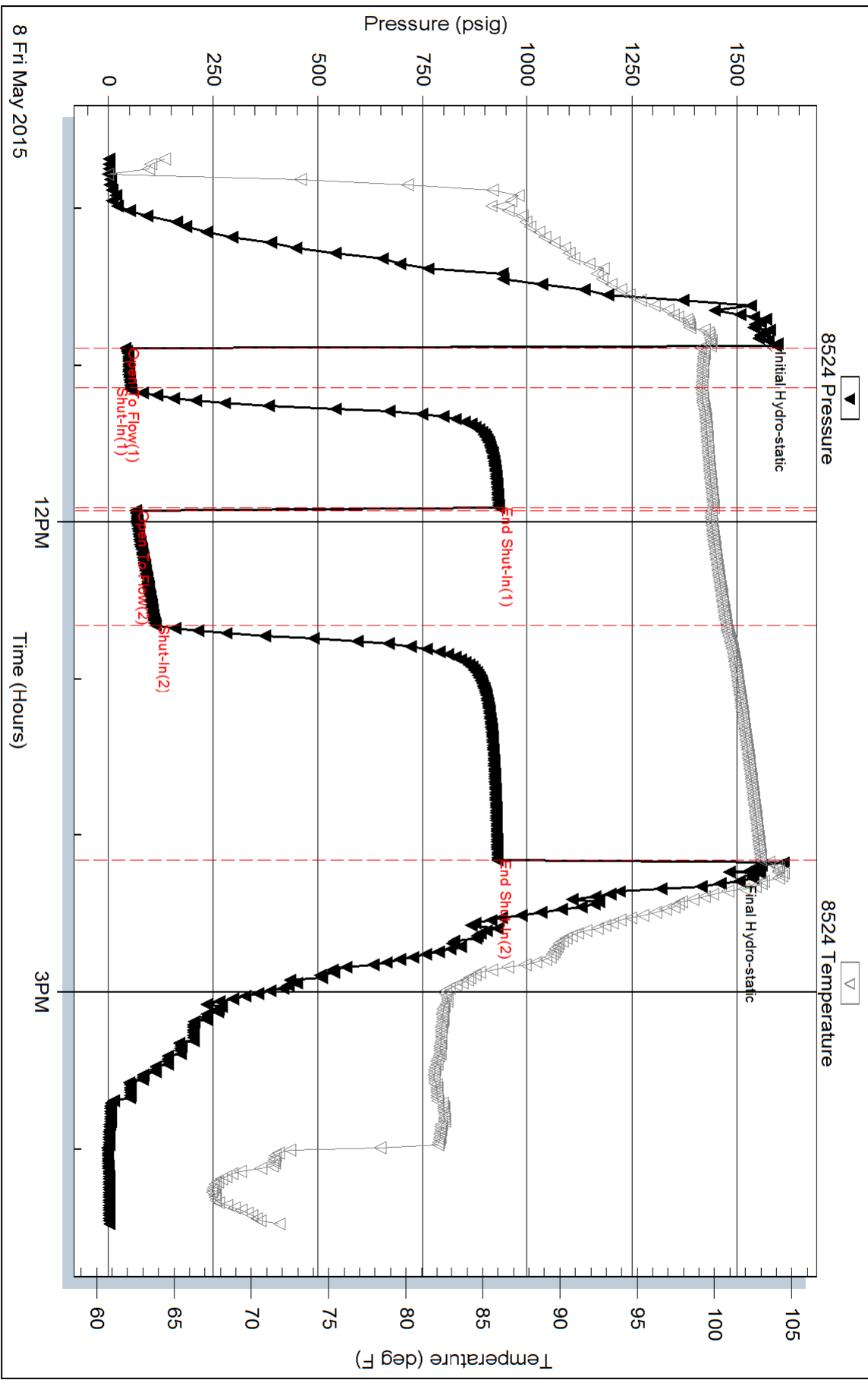
Inside

Shelby Resources LLC.

Jerry's Unit #1-15

DST Test Number: 2

### Pressure vs. Time



Triobite Testing, Inc

Ref. No: 61995

Printed: 2015.05.08 @ 22:52:06