



Scale 1:240 Imperial

Well Name: Fenwick #2-26  
 Surface Location: 992' FSL, 1832 'FEL, Sec. 26-21S-16W  
 Bottom Location:  
 API: 15-145-21804-0000  
 License Number:  
 Spud Date: 6/15/2015 Time: 9:15 PM  
 Region: Pawnee  
 Drilling Completed: 6/21/2015 Time: 6:35 AM  
 Surface Coordinates:  
 Bottom Hole Coordinates:  
 Ground Elevation: 1975.00ft  
 K.B. Elevation: 1988.00ft  
 Logged Interval: 3100.00ft To: 4025.00ft  
 Total Depth: 4025.00ft  
 Formation: Penn Sand  
 Drilling Fluid Type: Chemical/Fresh Water Gel

**OPERATOR**

Company: Shelby Resources, LLC  
 Address: 621 17th St, Ste 1150  
 Denver, CO 80293  
 Contact Geologist: Janine Sturdavant  
 Contact Phone Nbr: 303-907-2209 / 720-274-4682  
 Well Name: Fenwick #2-26  
 Location: 992' FSL, 1832 'FEL, Sec. 26-21S-16W  
 API: 15-145-21804-0000  
 Pool:  
 State: Kansas Field: Wildcat  
 Country: USA

**LOGGED BY**



Company: Shelby Resources, LLC  
 Address: 445 UNION BLVD. Suite 208  
 LAKEWOOD, CO. 80228  
 Phone Nbr: 203-671-6034  
 Logged By: Geologist Name: Jeremy Schwartz

**NOTES**

The Shelby Resources, LLC Fenwick #2-26 was drilled to a total depth of 4025', bottoming in the Arbuckle. A TookeDaq gas detector was employed in the drilling of said well.

2 DST's were conducted throughout the Conglomerate and Simpson Zones. The DST Reports can be found at the bottom of this log.

Due to DST Results, sample shows, gas kicks, and log analysis it was determined by all parties involved to plug and abandon the well. The dry samples were saved and will be available for further review at the Kansas Geological Society Well Sample Library, located in Wichita, KS.

Respectfully Submitted,  
 Jeremy Schwartz  
 Geologist

**CONTRACTOR**

Contractor: Sterling Drilling Co  
 Rig #: 5

Rig Type: mud rotary  
 Spud Date: 6/15/2015  
 TD Date: 6/21/2015  
 Rig Release:

Time: 9:15 PM  
 Time: 6:35 AM  
 Time:









### ELEVATIONS

K.B. Elevation: 1988.00ft  
 K.B. to Ground: 13.00ft  
 Ground Elevation: 1975.00ft

DATE	DEPTH	ACTIVITY
Thursday, June 18, 2015	3370'	Geologist Jeremy Schwartz on location @ 2230hrs ~3370', Drlg ahead through
Friday, June 19, 2015	3550'	Heebner, Toronto, Douglas Shale, Brown Lime, LKC, CFS @ 3551', Resume Drlg ahead
	3730'	through Stark Shale, BKC, Marmaton, CFS @ 3765', Conduct Bit Trip, Drop survey,
		Strap out, Swap PDC for Button Bit, Successful Bit Trip, Resume Drlg ahead through
	3805'	Marmaton, Conglomerate, Conglomerate Sand, CFS @ 3805', Conduct DST #1
Saturday, June 20, 2015	3805'	Successful Test, Resume Drlg ahead through Conglomerate, CFS @ 3821', Resume
	3896'	Drlh ahead, CFS @ 3876', Resume Drlg ahead, CFS @ 3896', Conduct DST #2 in the
		Simpson Sand, Successful Test, Resume Drlg ahead,
Sunday, June 21, 2015	3930'	CFS@ 3930', Resume Drlg ahead, CFS @ 3939', Resume Drlg ahead to TD @ 4025,
	4025'	TD of 4025' reached @ 0635hrs, CTCH 1hr, OOH, Conduct Logging Operations
		Logging Operations complete @ 1415hrs
		Geologist Jeremy Schwartz off location @ 1530hrs

FORMATION	CAPTIVA II, LLC												SHELBY RESOURCES, LLC									
	FENWICK #2-26						FENWICK #1-35						FENWICK UNIT #1-26									
	NW SW NE NE 35-21S-16W		NW SW NE NE 35-21S-16W		SE SW SE NW 35-21S-16W		SE SW SE NW 35-21S-16W		NW NE NE SE 26-21S-16W													
	KB	1988	KB	1988	KB	1991	KB	1984	KB	1984	KB	1984										
LOG TOPS	SAMPLE TOPS	COMP. CARD	LOG	SMPL.	COMP. CARD	LOG	SMPL.	COMP. CARD	LOG	SMPL.	COMP. CARD	LOG	SMPL.									
ANHYDRITE TOP	977	1011	976	1012	974	1014	-	3	-	2	978	1013	-	2	-	1	966	1018	-	7	-	6
BASE	1004	984	1002	986	1000	988	-	4	-	2	1002	989	-	5	-	3	988	996	-	12	-	10
TOPEKA	3134	-1146	3134	-1146	3132	-1144	-	2	-	2	3136	-1145	-	1	-	1	3119	-1135	-	11	-	11
HEEBNER SHALE	3396	-1408	3396	-1408	3395	-1407	-	1	-	1	3400	-1409	+	1	+	1	3379	-1395	-	13	-	13
TORONTO	3417	-1429	3420	-1432	3417	-1429	+	0	-	3	3419	-1428	-	1	-	4	3400	-1416	-	13	-	16
DOUGLAS SHALE	3430	-1442	3433	-1445	3430	-1442	+	0	-	3	3437	-1446	+	4	+	1	3414	-1430	-	12	-	15
BROWN LIME	3496	-1508	3498	-1510	3496	-1508	+	0	-	2	3504	-1513	+	5	+	3	3479	-1495	-	13	-	15
LKC	3504	-1516	3506	-1518	3504	-1516	+	0	-	2	3514	-1523	+	7	+	5	3488	-1504	-	12	-	14
STARK SHALE	3692	-1704	3695	-1707	3696	-1708	+	4	+	1	3701	-1710	+	6	+	3	3676	-1692	-	12	-	15
BKC	3739	-1751	3740	-1752	3742	-1754	+	3	+	2	3752	-1761	+	10	+	9	3724	-1740	-	11	-	12
MARMATON	3760	-1772	3762	-1774	3764	-1776	+	4	+	2	3766	-1775	+	3	+	1	3746	-1762	-	10	-	12
CONG. SANDY/CHRT	3791	-1803	3790	-1802	3798	-1810	+	7	+	8	3806	-1815	+	12	+	13	3774	-1790	-	13	-	12
SIMPSON SHALE	3862	-1874	3858	-1870	3864	-1876	+	2	+	6	3884	-1893	+	19	+	23	3822	-1838	-	36	-	32
SIMPSON SAND	3881	-1893	3885	-1897	3884	-1896	+	3	-	1	3892	-1901	+	8	+	4	3849	-1865	-	28	-	32
ARBUCKLE	3926	-1938	3927	-1939	3927	-1939	+	1	+	0	3947	-1956	+	18	+	17	3888	-1904	-	34	-	35
RTD			4025	-2037	4025	-2037			+	0	4042	-2051			+	14	4000	-2016			-	21
LTD	4024	-2036			4026	-2038	+	2			4038	-2047	+	11			4000	-2016	-	20		

### ROCK TYPES

 Congl	 Lmst fw<7	 shale, gry	 shale, red
 Dolprim	 shale, grn	 Carbon Sh	 Ss

### ACCESSORIES

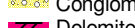

#### MINERAL

△ Chert White  
 ∴ Varicolored chert

#### FOSSIL

∩ Bioclastic or Fragmental  
 F Fossils < 20%

#### STRINGER





∩ Chert  
 Conglomerate  
 Dolomite  
 Sandstone  
 Shale  
 green shale  
 red shale

#### TEXTURE

C Chalky





### OTHER SYMBOLS

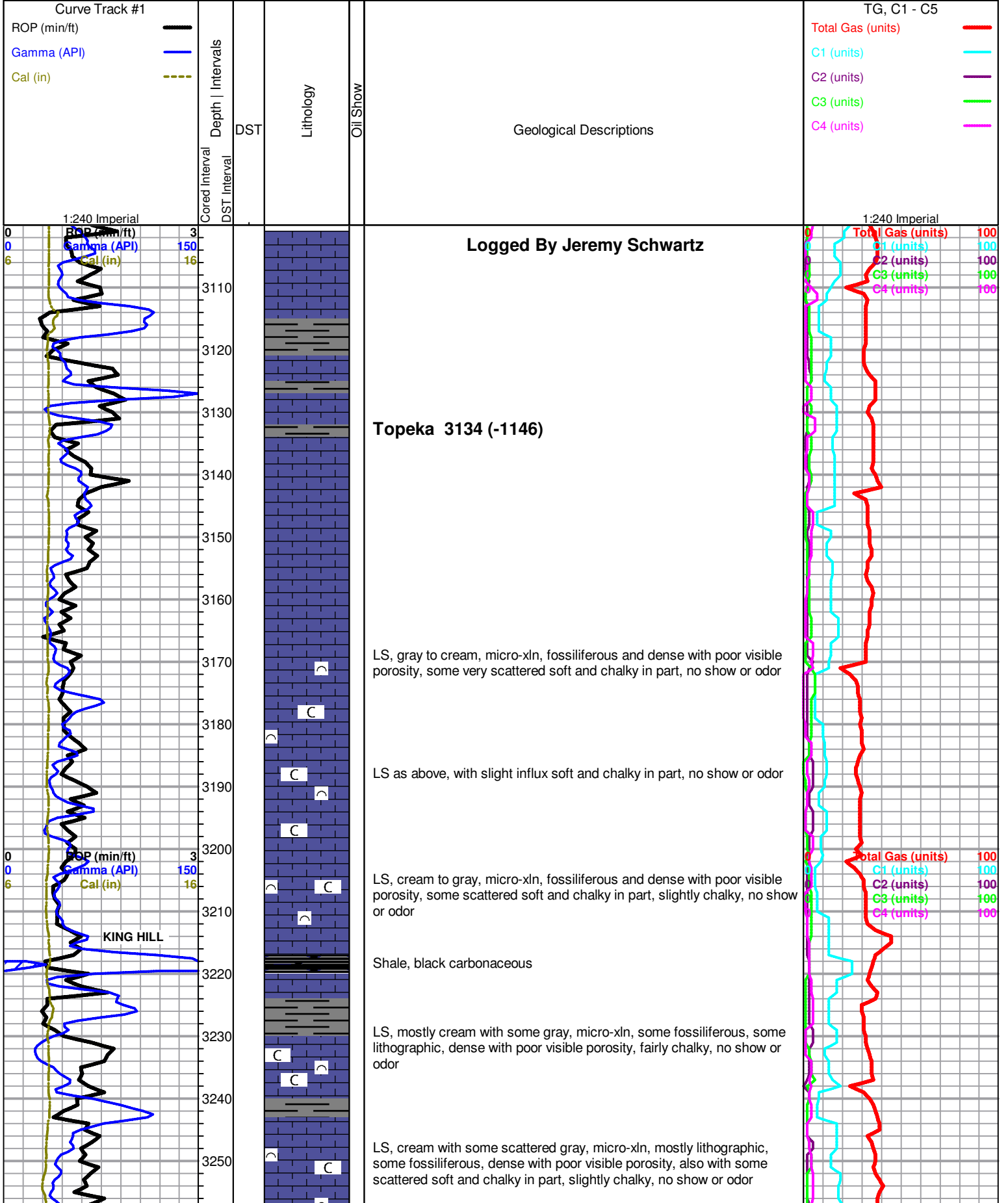
#### MISC

 Daily Report  
 Digital Photo  
 Document  
 Folder

#### DST

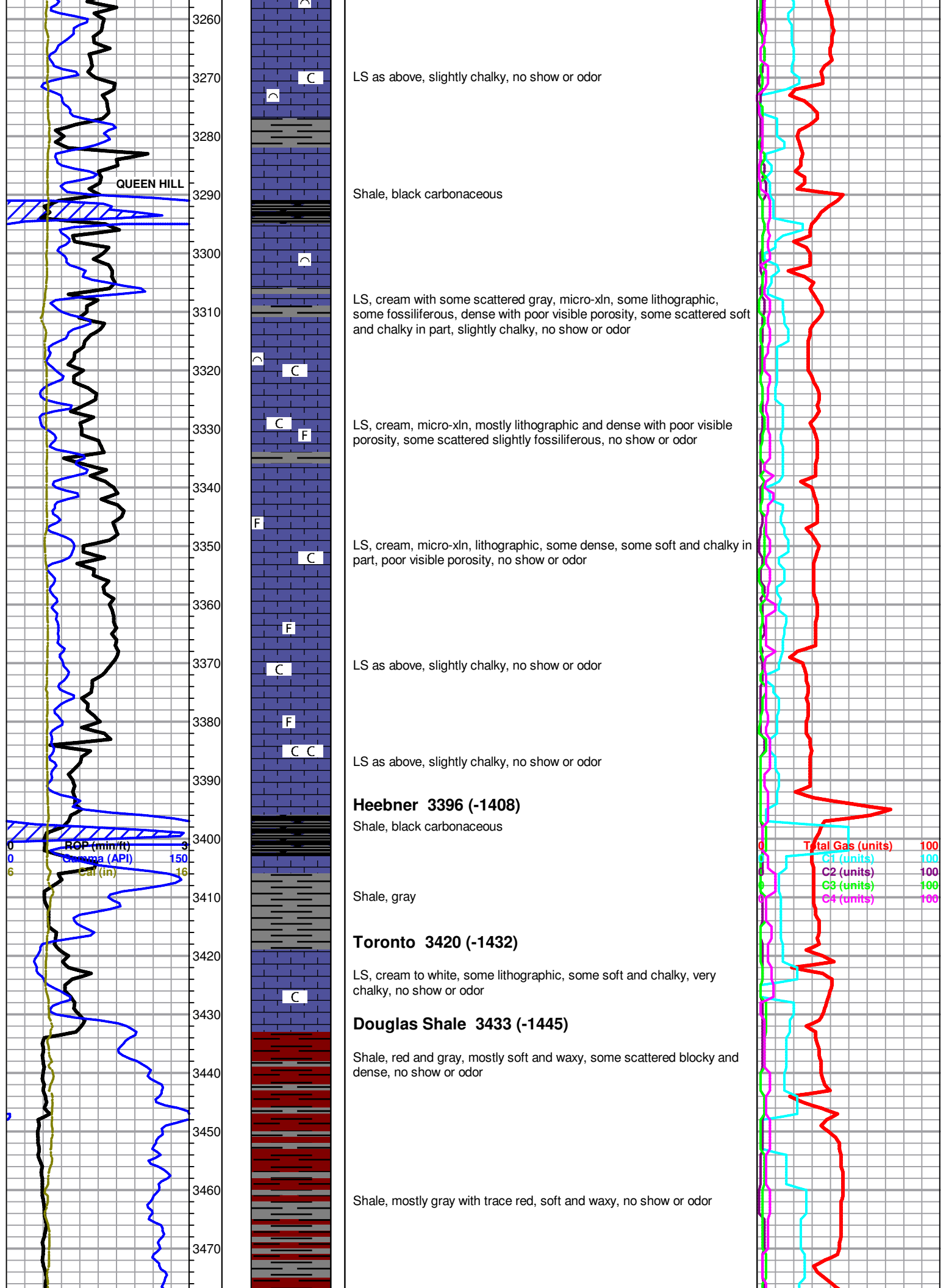
 DST Int  
 DST alt

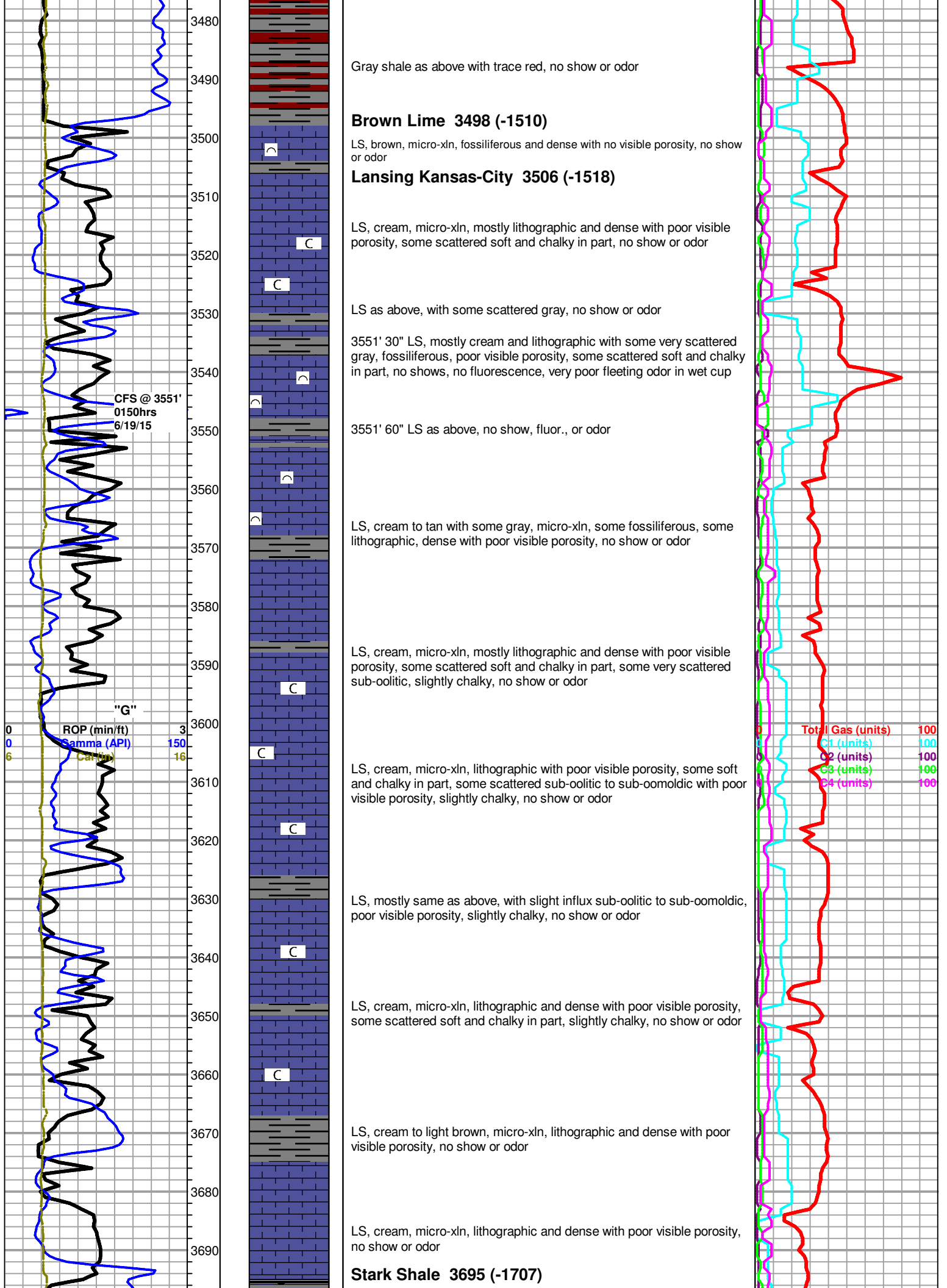
-  Vertical Log File
-  Horizontal Log File
-  Core Log File
-  Drill Cuttings Rpt

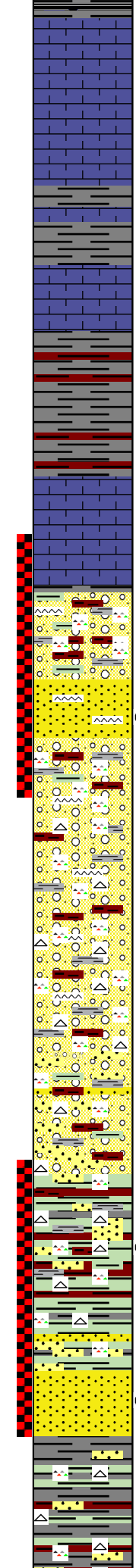
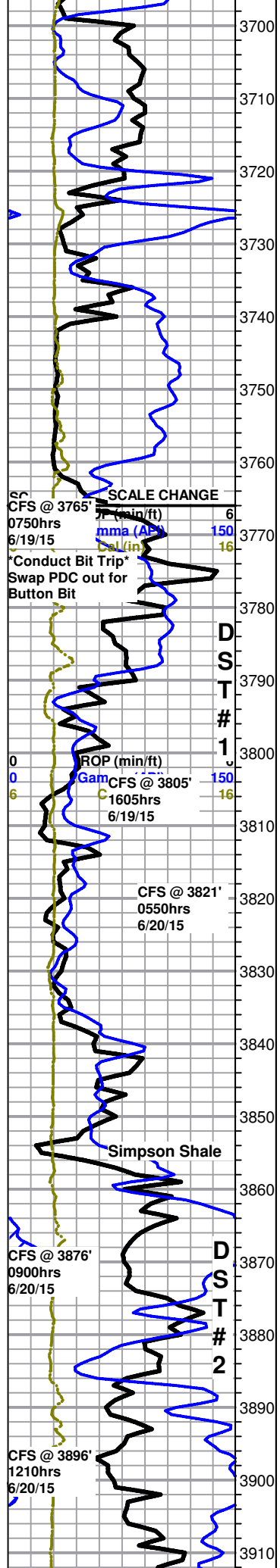


**Topeka 3134 (-1146)**

**KING HILL**







Shale, gray with trace black

LS, cream, micro-*xl*n, lithographic and dense with poor visible porosity, no show or odor

LS, cream to light brown with some scattered gray mottled, dense with poor visible porosity, also with gray shale and trace red, no show or odor

**B/KC 3740 (-1752)**

3765' 30" LS, cream, to light brown with some scattered gray mottled, dense with poor visible porosity, also with gray shale and trace red, no show or odor

3765' 60" Shale, gray and red, some soft and waxy, some blocky and dense

**Marmaton 3762 (-1774)**

LS, cream, micro-*xl*n, mostly lithographic and dense with poor visible porosity, some very scattered slightly fossiliferous, poor visible porosity, no show or odor

Mixed gray and red shales with trace green, with some scattered cream to gray LS, lithographic and dense with poor visible porosity, with some very scattered vari-colored white/brown/orange/red/yellow chert, heavy red wash

**Conglomerate Sand 3790 (-1802)**

FENWICK 2-26 DST 1.jpg

3805' 30" Conglomerate as above, also with some SS clusters, vf-grained, light brown to brown, mostly sub-rounded with some scattered sub-angular, most loosely cemented and friable with fair to good visible porosity, most clusters slowly bleed oil and few very scattered gas bubble to surface when left under lamp, stain also increases to mostly saturated to saturated, upon break SSFO, also with some scattered SS clusters as above, fairly well cemented with scattered white chert inclusions, SSFO in tray, good odor

3805' 60" Conglomerate, with some very scattered SS clusters as above, some very scattered sub-rounded clear SS grains in bottom of tray, NSFO, fair odor

3821' 20" Conglomerate, with influx tan to brown and some scattered cream to white chert, most sharp and fresh, no show or odor

3821' 45" Conglomerate with chert as above, no show or odor

Chert, brown to tan and white, with some scattered mixed shales and LS, no show or odor

Conglomerate as above, also with some very scattered green shale, no show or odor

Mixed tan to brown and white cherts, cream LS, and some scattered gray shale with trace green, also with few very scattered SS clusters, f-med grained, clear to brown, sub-rounded, few fairly well cemented, few fairly friable, mostly barren, one cluster with SSFO upon break, NSFO in tray, no odor

3876' 30" Mostly tan to white chert, with some cream LS, some oomoldic, with gray shale and very scattered green, also with few very scattered SS clusters, clear to brown, sub-rounded to sub-angular, fairly well sorted, most very well cemented and dense, appear barren, few clusters fairly friable, most with NSFO upon break, few clusters with SSFO upon break, NSFO in tray, no odor

45" Mostly same as above, found one SS cluster, light brown, f-grained, friable, with slight to fair show free oil upon break and slight increase in odor, NSFO in tray, no odor

~3880' Mixed tan to white with some very scattered red/orange cherts, gray and red shale, and very scattered cream LS, with influx green to pale green/yellow shale, no show or odor

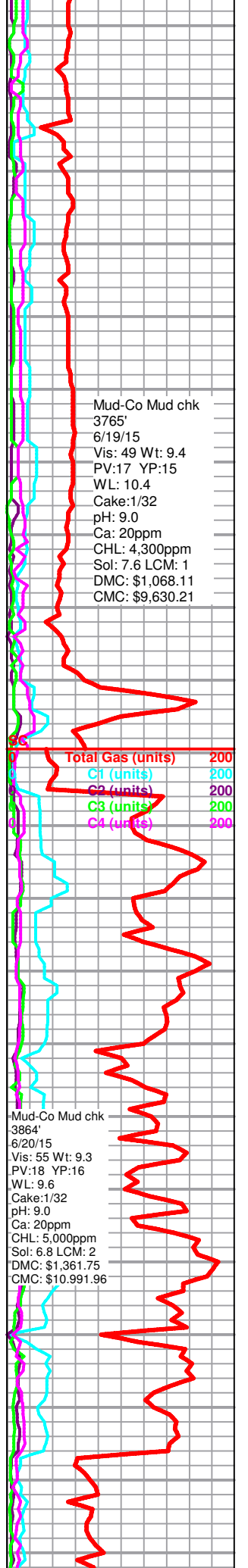
**Simpson Sand 3885 (-1897)**

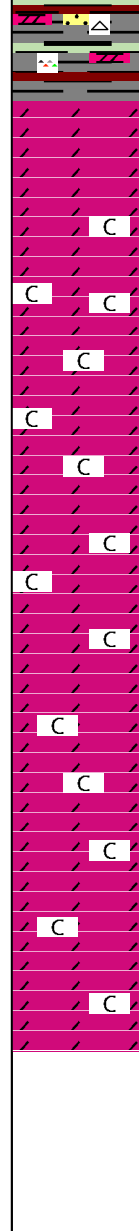
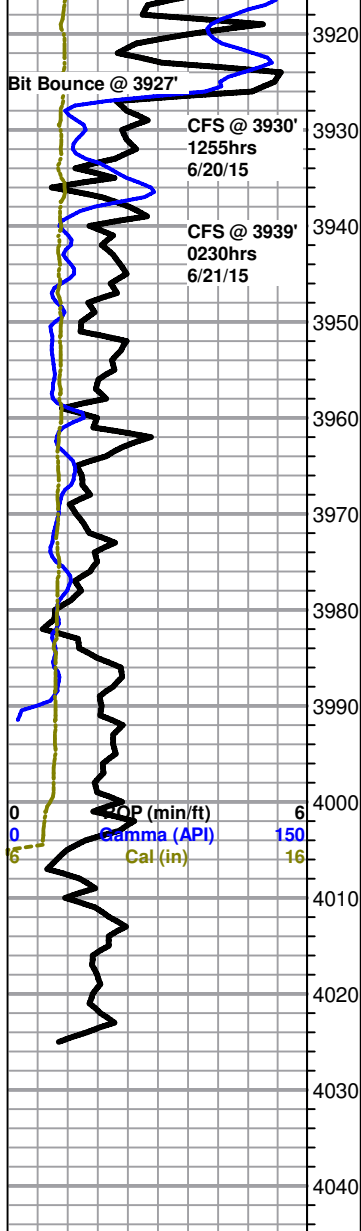
3896' 20" Mixed gray, green, and red shales, with some SS clusters, clear to light brown, f-med grained, sub-rounded to sub-angular, most fairly friable, some well cemented, most clusters slowly bleed few oil droplets to surface under lamp, upon break most have slight to fair show free oil, few clusters with slight show gas bubbles, some slightly chalk filled, poor odor

3896' 60" Mostly same as above, with SS and shows appearing to be slightly dropping out, SSFO in tray, poor odor

FENWICK 2-26 DST 2.jpg

Gray, green, and red shale, with some very scattered white to tan and brown





Gray, green, and red shale, with some very scattered white to tan and brown chert, also with few scattered SS clusters, clear to light brown, f-med grained, sub-angular, most well cemented and dense, poorly sorted, some with shale and chert inclusions, slightly chalk filled, no show or odor

~3920' Mixed shales, cherts, and SS as above, also with some very scattered dolomite, cream to light gray, micro-xln, sucrosic and very dense with poor visible porosity, some pyritic, barren, no show or odor

### Arbuckle 3927 (-1939)

3939' 30" Dolomite, cream to light brown, micro-xln, sucrosic and dense with poor visible porosity, some sub-rhombic, mostly dense with poor visible porosity, some fairly friable, no show or odor

3939' 60" Dolomite as above, fairly chalky, no show or odor

Dolomite, cream with some very scattered light brown, micro-xln, sucrosic to sub-sucrosic, mostly sub-rhombic and dense with poor visible porosity, some fairly friable, very chalky, no show or odor

Dolomite as above, slightly less chalky, no show or odor

Dolomite, cream to light brown, micro-xln, sub-sucrosic to sucrosic and dense with poor visible porosity, some fairly friable, some scattered sub-rhombic, very chalky, no show or odor

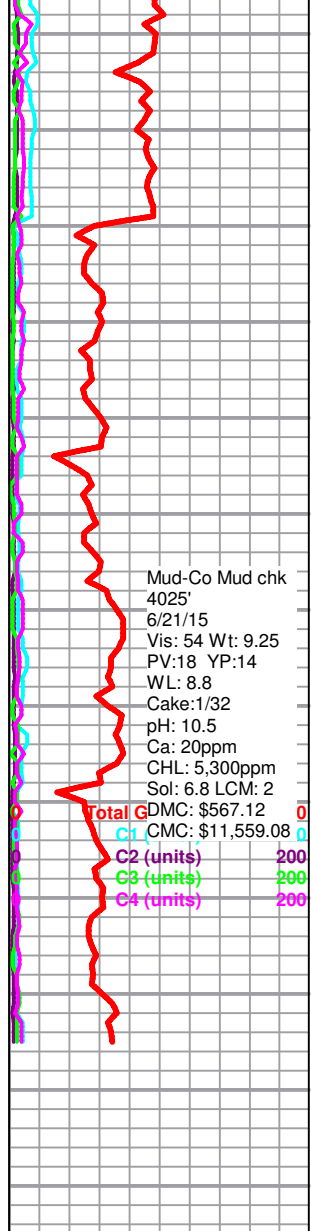
Dolomite, cream to white, micro-xln, mostly sucrosic and dense with poor visible porosity, some scattered fairly friable, some very scattered sub-rhombic, slightly chalky, no show or odor

Dolomite as above, fairly chalky, no show or odor

Dolomite, cream to white with some very scattered light brown, sucrosic and dense with poor visible porosity, some scattered fairly friable, some very scattered sub-rhombic, fairly chalky, no show or odor

Dolomite as above, with some very scattered sub-rhombic with poor to fair visible porosity, no show or odor

Dolomite as above, slightly chalky, no show or odor



Rotary TD 4025' @ 0635hrs 6/21/15  
 Nabors Well Services Logging TD @ 4024'  
 Complete Logging Operations @ 1415hrs 6/21/15  
 Geologist Jeremy Schwartz off location @ 1530hrs 6/21/15



# DRILL STEM TEST REPORT

SHELBY RESOURCES LLC

26-21S-16W PAWNEE

621 17TH STREET SUITE 1150  
 621 17TH STREET SUITE 1150  
 DENVER, COLORADO 80293  
 ATTN: JEREMY SCHWARTZ

FENWICK 32-26

Job Ticket: 01039

DST#: 1

Test Start: 2015.06.19 @ 00:00:00

**GENERAL INFORMATION:**

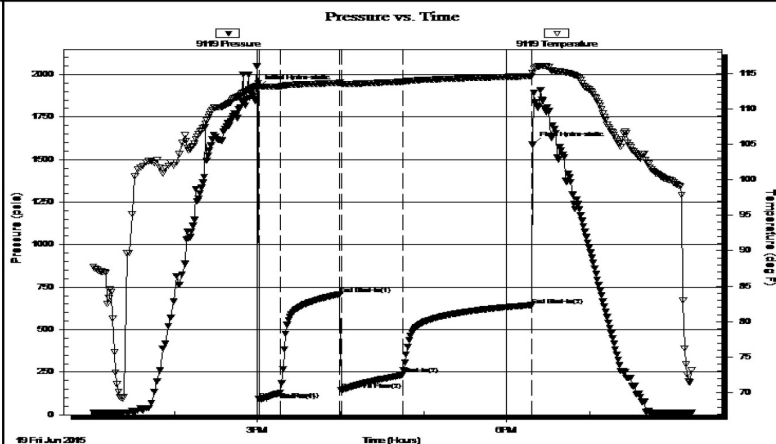
Formation: **CONGLOMERATE**  
 Deviated: No Whipstock: ft (KB)  
 Time Tool Opened: 00:00:00  
 Time Test Ended: 00:00:00  
 Test Type: Conventional Bottom Hole (Initial)  
 Tester: GENE BUDIG  
 Unit No: 42  
 Interval: **3770.00 ft (KB) To 3805.00 ft (KB) (TVD)**  
 Total Depth: 3805.00 ft (KB) (TVD)  
 Reference Elevations: 1988.00 ft (KB)  
 1875.00 ft (CF)  
 Hole Diameter: 7.88 inches Hole Condition: Fair  
 KB to GR/CF: 113.00 ft

**Serial #: 9119**

**Inside**

Press@RunDepth: 644.40 psia @ 3800.00 ft (KB) Capacity: 5000.00 psia  
 Start Date: 2015.06.19 End Date: 2015.06.19 Last Calib.: 2015.06.20  
 Start Time: 07:20:00 End Time: 20:13:53 Time On Btm: 2015.06.19 @ 15:00:23  
 Time Off Btm: 2015.06.19 @ 18:18:23

TEST COMMENT: 1ST OPENING 15 MINUTES FAIR BLOW BUILT TO THE BOTTOM OF A 5 GALLON BUCKET IN 3 MINUTES  
 1ST SHUT-IN 45 MINUTES- FAIR BLOW BACK  
 2ND OPENING 45 MINUTES FAIR BLOW BUILT TO THE BOTTOM OF A 5 GALLON BUCKET IN 6 MINUTES



**PRESSURE SUMMARY**

Time (Min.)	Pressure (psia)	Temp (deg F)	Annotation
0	1924.57	113.57	Initial Hydro-static
1	92.78	113.14	Open To Flow (1)
16	131.99	113.15	Shut-In(1)
59	708.15	113.65	End Shut-In(1)
60	145.75	113.49	Open To Flow (2)
105	238.08	113.82	Shut-In(2)
198	644.40	114.59	End Shut-In(2)
199	1586.85	115.06	Final Hydro-static

**Recovery**

Length (ft)	Description	Volume (bbl)
0.00	675 GAS IN THE PIPE	0.00
150.00	MUDDY GASS OIL	1.54
0.00	6 GAS 60 OIL 34 MUD	0.00
250.00	WATER CHLORIDES 38000	3.51

**Gas Rates**

Choke (inches)	Pressure (psia)	Gas Rate (Mcf/d)



DRILL STEM TEST REPORT



SHELBY RESOURCES LLC

26-21S-16W PAWNEE

621 17TH STREET SUITE 1150  
DENVER, COLORADO 80293

FENWICK 32-26

Job Ticket: 01040

DST#: 2

ATTN: JEREMY SCHWARTZ

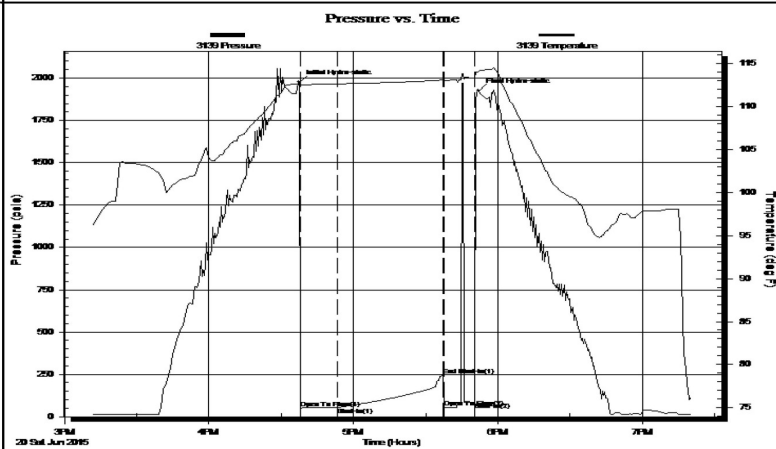
Test Start: 2015.06.20 @ 03:11:00

GENERAL INFORMATION:

Formation: **simpson**  
 Deviated: No Whipstock: ft (KB)  
 Test Type: Conventional Bottom Hole (Initial)  
 Time Tool Opened:  
 Tester: GENE BUDIG  
 Time Test Ended:  
 Unit No:  
 Interval: **3855.00 ft (KB) To 3890.00 ft (KB) (TVD)**  
 Reference Elevations: 1988.00 ft (KB)  
 Total Depth: 3890.00 ft (KB) (TVD)  
 1875.00 ft (CF)  
 Hole Diameter: 7.88 inches Hole Condition: Fair  
 KB to GR/CF: 113.00 ft

Serial #: **3139** Outside  
 Press@RunDepth: 241.92 psia @ 3885.00 ft (KB) Capacity: 5000.00 psia  
 Start Date: 2015.06.20 End Date: 2015.06.20 Last Calib.: 2015.06.20  
 Start Time: 15:11:00 End Time: 19:20:30 Time On Btm: 2015.06.20 @ 16:37:30  
 Time Off Btm: 2015.06.20 @ 17:52:00

TEST COMMENT: 1st opening 15 minutes very weak surface blow for 6 minutes and died  
 1st shut-in 45 minutes-no blow back  
 2nd opening 10 minutes no blow came out of the hole



PRESSURE SUMMARY

Time (Min.)	Pressure (psia)	Temp (deg F)	Annotation
0	1975.00	112.95	Initial Hydro-static
1	51.66	112.47	Open To Flow (1)
16	54.88	112.66	Shut-In(1)
60	241.92	113.09	End Shut-In(1)
60	55.82	112.99	Open To Flow (2)
73	87.76	113.38	Shut-In(2)
75	1926.24	114.15	Final Hydro-static

Recovery

Length (ft)	Description	Volume (bbl)
70.00	drilling mud	0.42

Gas Rates

Choke (inches)	Pressure (psia)	Gas Rate (Mcf/d)