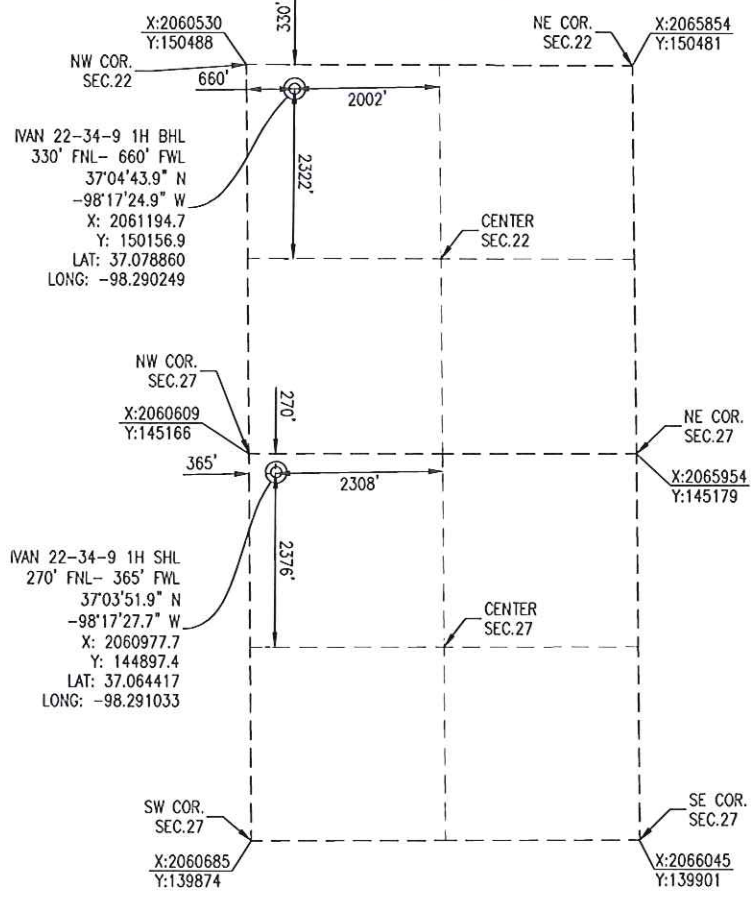


HARPER COUNTY, KANSAS  
 SECTION 27 TOWNSHIP 34S RANGE 09W 6TH P.M.



BOTTOM HOLE INFORMATION PROVIDED BY OPERATOR LISTED AND CORNER COORDINATES ARE TAKEN FROM POINTS SURVEYED IN THE FIELD.

**ELEVATION:**  
 1272' GR. AT STAKE

OPERATOR: TAPSTONE ENERGY WELL NO: 1H

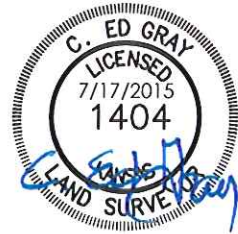
LEASE NAME: IVAN 22-34-9

TOPOGRAPHIC & VEGETATION: LOCATION FELL IN A FIELD

GOOD DRILL SITE: YES REFERENCE STAKES OR ALTERNATE LOCATION STAKES SET: NONE

BEST ACCESSIBILITY TO LOCATION: WEST OR NORTH LINE OF SECTION 27

DISTANCE & DIRECTION FROM HWY JCT OR TOWN: FROM THE JCT. OF KS-58 (SW 140 AVE) & SW 80 RD (±7.0 MILES SOUTHEAST OF HAZELTON, KS), TRAVEL NORTH ON KS-58 (SW 140 AVE) ±2.0 MILES TO THE NORTHWEST CORNER OF SECTION 27, T34S-R09W.



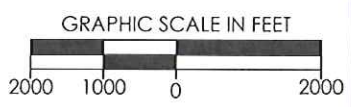
(THE FOLLOWING INFORMATION WAS GATHERED USING A GPS RECEIVER ACCURACY ±2-3 METERS)

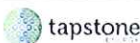

GPS DATUM: NAD-27  
 LAT: 37.064417  
 LONG: -98.291033

STATE PLANE COORDINATES:  
 ZONE: KS-SOUTH NAD-27  
 X: 2060977.7  
 Y: 144897.4

DATE STAKED: 7-17-2015

**GENERAL NOTES:**  
 THE TIES AND FOOTAGES SHOWN ON THIS PLAT ARE FROM LINES OF OCCUPATION FROM A SURVEY MADE ON THE GROUND AND / OR BEARING AND DISTANCES FROM THE GENERAL LAND OFFICE PLAT OF THE AREA SHOWN AND MAY NOT BE THE ACTUAL PROPERTY CORNERS. THIS PLAT DOES NOT REPRESENT A TRUE BOUNDARY SURVEY. DRILL SITE CONDITION DETERMINATIONS WERE MADE BY TAPSTONE ENERGY REPRESENTATIVES.



REVISION	 "IVAN 22-34-9 1H" PART OF THE NW1/4 OF SECTION 27, T-34-S, R-09-W PROPOSED DRILL SITE HARPER COUNTY, KANSAS			
 MOVED SHL (7-17-2015)				
	SCALE: 1" = 2000'	PLOT DATE: 07-17-2015	DRAWN BY: MF	SHEET NO.: 1 OF 4