



TRILOBITE TESTING, INC

DRILL STEM TEST REPORT

SGA
1515 Wykoop
STE 700
Denver Co 80202
ATTN: Chris Mitchel

7-5S-35W Rawlins KS

Fisher #1-7

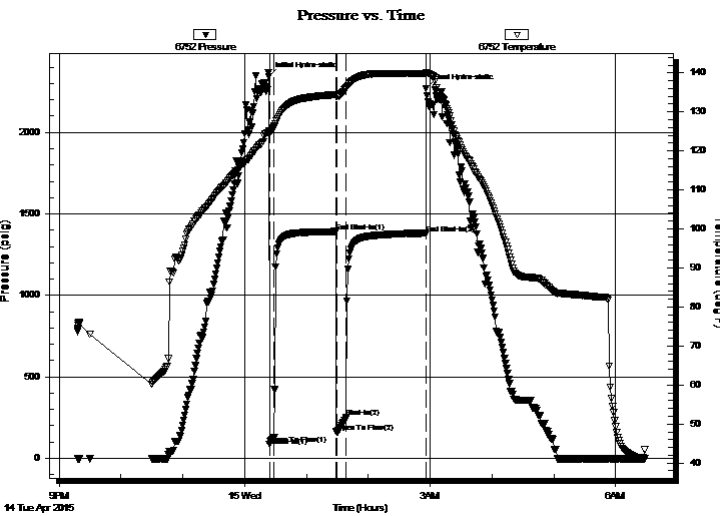
Job Ticket: 62320 **DST#: 2**
Test Start: 2015.04.14 @ 21:18:00

GENERAL INFORMATION:

Formation: **Cherokee**
Deviated: No Whipstock: ft (KB)
Time Tool Opened: 00:24:00
Time Test Ended: 06:28:10
Interval: **4578.00 ft (KB) To 4616.00 ft (KB) (TVD)**
Total Depth: 4616.00 ft (KB) (TVD)
Hole Diameter: 7.88 inches Hole Condition: Good
Test Type: Conventional Bottom Hole (Reset)
Tester: Ryan Nichols
Unit No: 78
Reference Elevations: 3236.00 ft (KB)
3231.00 ft (CF)
KB to GR/CF: 5.00 ft

Serial #: 6752 Inside
Press@RunDepth: 250.71 psig @ 4579.00 ft (KB) Capacity: 8000.00 psig
Start Date: 2015.04.14 End Date: 2015.04.15 Last Calib.: 2015.04.15
Start Time: 21:18:01 End Time: 06:28:10 Time On Btm: 2015.04.15 @ 00:23:40
Time Off Btm: 2015.04.15 @ 02:56:00

TEST COMMENT: 5 IF - 1" blow built to BoB @ 2 mins
60 ISI - Surface blow built to BoB @ 13 mins
10 FF - Surface blow built to BoB @ 2 mins
75 FSI - Surface blow built to BoB @ 15 mins



PRESSURE SUMMARY

Time (Min.)	Pressure (psig)	Temp (deg F)	Annotation
0	2343.20	125.03	Initial Hydro-static
1	85.93	124.72	Open To Flow (1)
5	130.63	126.18	Shut-In(1)
65	1391.73	134.41	End Shut-In(1)
66	160.83	133.99	Open To Flow (2)
75	250.71	136.12	Shut-In(2)
152	1378.95	139.84	End Shut-In(2)
153	2270.67	140.13	Final Hydro-static

Recovery

Length (ft)	Description	Volume (bbl)
40.00	GMCO - 15%G - 25%M - 60%o	0.20
600.00	GO - 40%G - 60%o	7.09
0.00	320' GIP	0.00

* Recovery from multiple tests

Gas Rates

Choke (inches)	Pressure (psig)	Gas Rate (Mcf/d)



**TRILOBITE
TESTING, INC**

DRILL STEM TEST REPORT

FLUID SUMMARY

SGA
1515 Wykoop
STE 700
Denver Co 80202
ATTN: Chris Mitchel

7-5S-35W Rawlins KS
Fisher #1-7
Job Ticket: 62320 **DST#: 2**
Test Start: 2015.04.14 @ 21:18:00

Mud and Cushion Information

Mud Type: Gel Chem	Cushion Type:	Oil API: 27 deg API
Mud Weight: 9.00 lb/gal	Cushion Length: ft	Water Salinity: ppm
Viscosity: 67.00 sec/qt	Cushion Volume: bbl	
Water Loss: 7.20 in ³	Gas Cushion Type:	
Resistivity: ohm.m	Gas Cushion Pressure: psig	
Salinity: 1200.00 ppm		
Filter Cake: 2.00 inches		

Recovery Information

Recovery Table

Length ft	Description	Volume bbl
40.00	GMCO - 15%G - 25%M - 60%o	0.197
600.00	GO - 40%G -60%o	7.086
0.00	320' GIP	0.000

Total Length: 640.00 ft Total Volume: 7.283 bbl

Num Fluid Samples: 0 Num Gas Bombs: 0 Serial #:

Laboratory Name: Laboratory Location:

Recovery Comments: OIL API - 29 @ 80 DEG F = 27 COR 60 DEG F

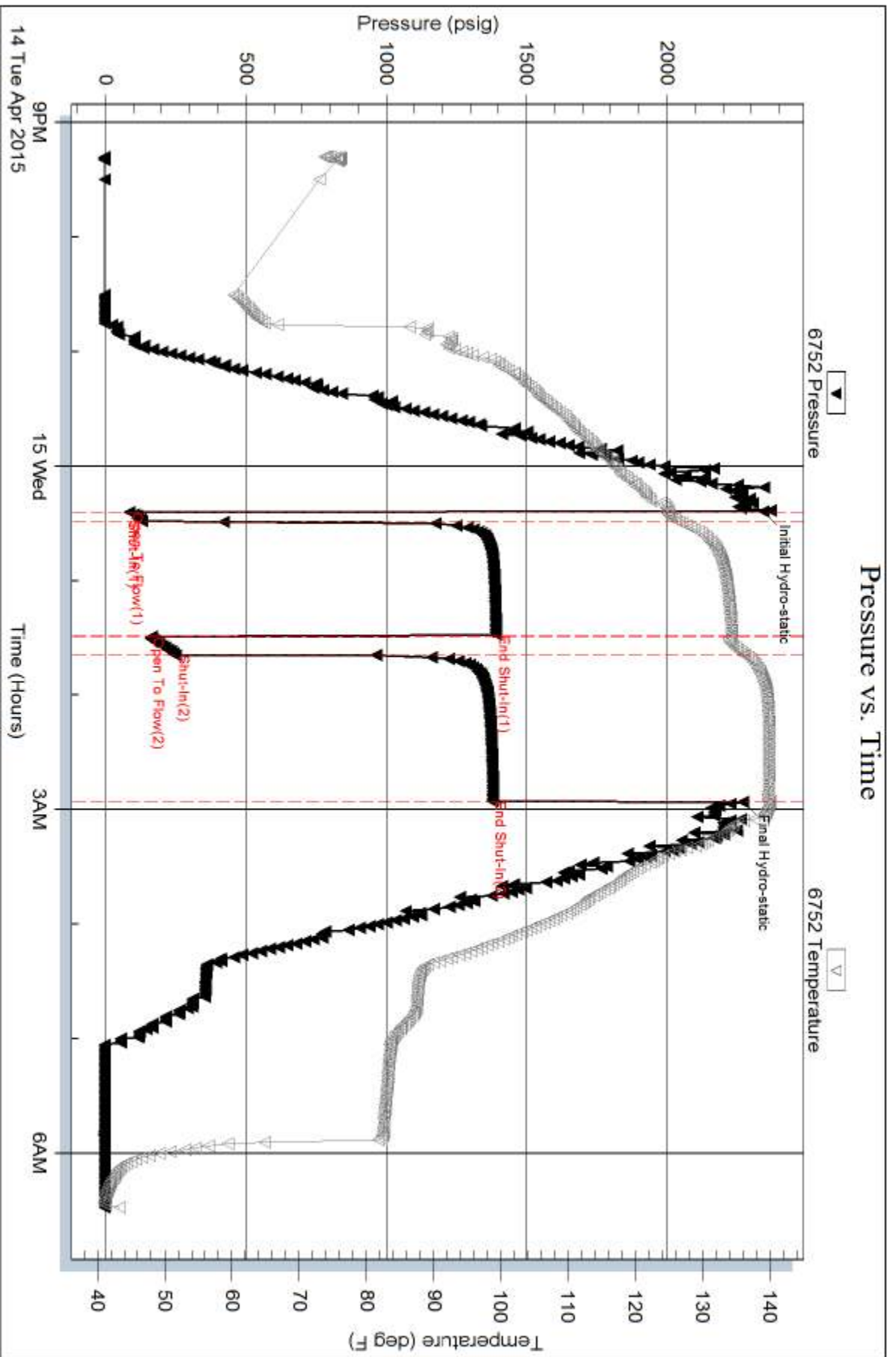
Serial #: 6752

Inside

SGA

Fisher #1-7

DST Test Number: 2



Serial #: 8017

Fluid

SGA

Fisher #1-7

DST Test Number: 2

