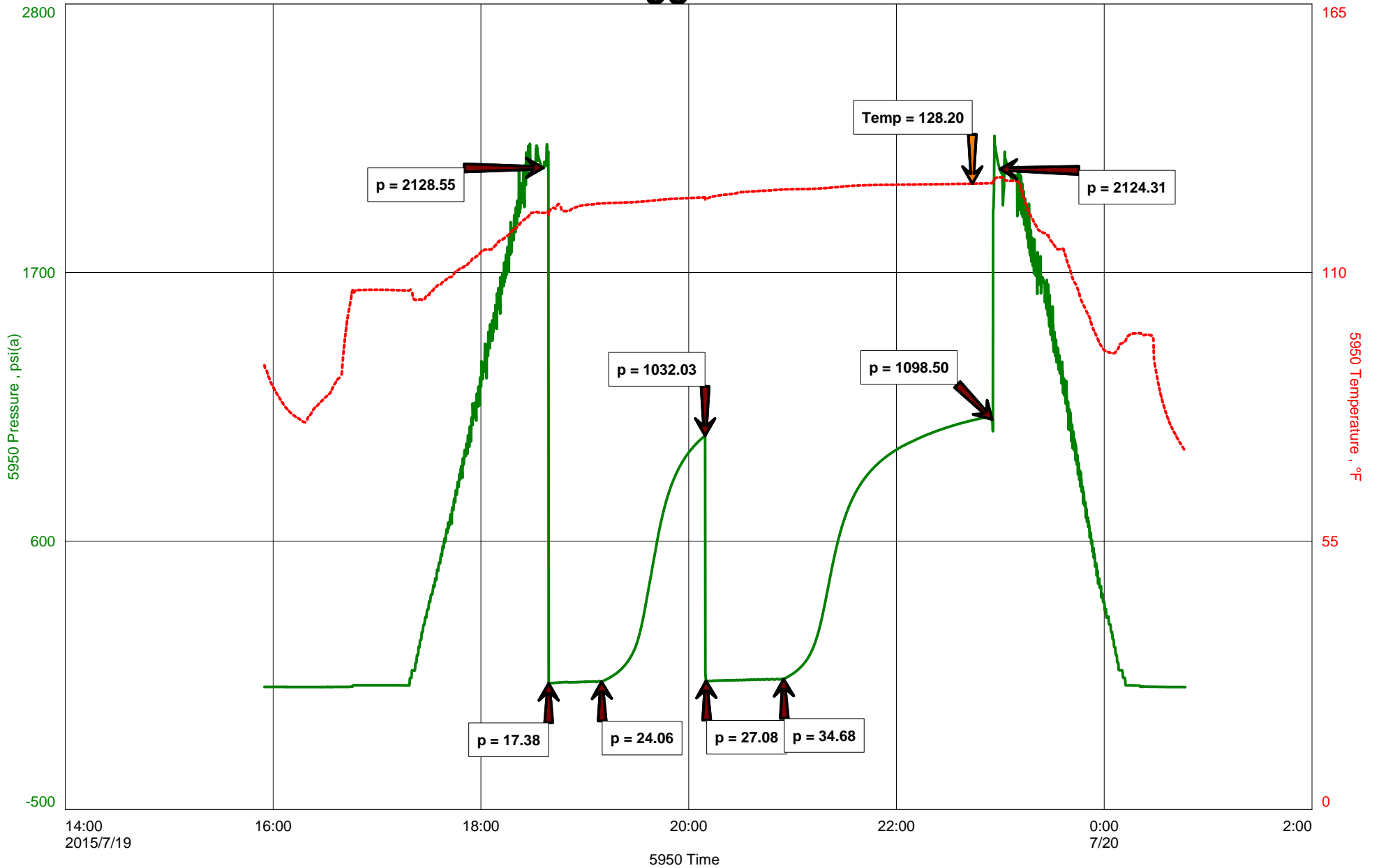


Raymond Oil Inc.  
Dst #2 Marm/Altamont 4382-4460'  
Start Test Date: 2015/07/19  
Final Test Date: 2015/07/20

Biggs #1  
Formation: Dst #2 Marm/Altamont 4382-4460'  
Pool: Wildcat  
Job Number: P0090

# Biggs #1





**Hoisington, Kansas**

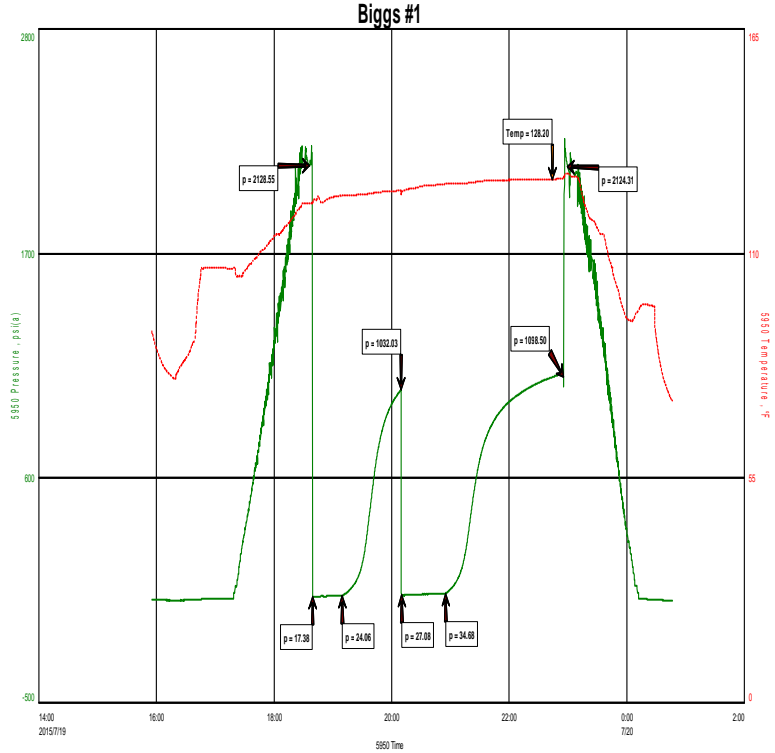
**Michael Carroll**  
**620-617-0368**  
**carroll.dtlc@gmail.com**

**General Information**

**Company Name** Raymond Oil Inc.

<b>Contact</b>	Clarke Sandberg
<b>Well Name</b>	Biggs #1
<b>Unique Well ID</b>	Dst #2 Marm/Altamont 4382-4460'
<b>Surface Location</b>	Sec36-6s-36w Thomas County
<b>Field</b>	Wildcat
<b>Well Type</b>	Vertical
<b>Test Type</b>	Drill Stem Test
<b>Well Operator</b>	Raymond Oil Inc.

<b>Formation</b>	Dst #2 Marm/Altamont 4382-4460'
<b>Well Fluid Type</b>	01 Oil
<b>Test Purpose</b>	Initial Test
<b>Start Test Date</b>	2015/07/19
<b>Start Test Time</b>	15:55:00
<b>Final Test Time</b>	00:50:00
<b>Job Number</b>	P0090
<b>Report Date</b>	2015/07/19
<b>Prepared By</b>	Michael Carroll



**TEST RECOVERY**

<b>Remarks</b>	<b>Recovery:</b>	<b>106'</b>	<b>Gas In Pipe</b>
		<b>12'</b>	<b>Clean Oil      Gravity 31.5 @ 60 Degrees</b>
		<b>38'</b>	<b>HOCM    43%O    57%M</b>
	<b>Total Fluid:</b>	<b>50'</b>	
	<b>Tool Sample:</b>	<b>100%O</b>	



**DIAMOND TESTING**  
P.O. Box 157  
**HOISINGTON, KANSAS 67544**  
(800) 542-7313  
**DRILL-STEM TEST TICKET**  
FILE: BIGGS1DST#2

TIME ON: 1555 7-19  
TIME OFF: 0050 7-20

Company RAYMOND OIL INC. Lease & Well No. BIGGS #1  
Contractor L.D. DRILLING Charge to RAYMOND OIL INC.  
Elevation 3287KB Formation MARMATON/ALTAMONT Effective Pay \_\_\_\_\_ Ft. Ticket No. P0090  
Date 07-19-15 Sec. 36 Twp. \_\_\_\_\_ 6 S Range \_\_\_\_\_ 36 W County THOMAS State KANSAS  
Test Approved By KIM SHOEMAKER Diamond Representative Michael Carroll

Formation Test No. 2 Interval Tested from 4382 ft. to 4460 ft. Total Depth 4460 ft.  
Packer Depth 4377 ft. Size 6 3/4 in. Packer depth \_\_\_\_\_ ft. Size 6 3/4 in.  
Packer Depth 4382 ft. Size 6 3/4 in. Packer depth \_\_\_\_\_ ft. Size 6 3/4 in.

Depth of Selective Zone Set \_\_\_\_\_  
Top Recorder Depth (Inside) 4367 ft. Recorder Number 5950 Cap. 5000 P.S.I.  
Bottom Recorder Depth (Outside) 4451 ft. Recorder Number 0230 Cap. 5000 P.S.I.  
Below Straddle Recorder Depth \_\_\_\_\_ ft. Recorder Number \_\_\_\_\_ Cap. \_\_\_\_\_ P.S.I.

Mud Type Chem Viscosity 56 Drill Collar Length 0 ft. I.D. 2 1/4 in.  
Weight 9.3 Water Loss 9.6 cc. Weight Pipe Length 0 ft. I.D. 2 7/8 in.  
Chlorides 4000 P.P.M. Drill Pipe Length 4349 ft. I.D. 3 1/2 in.  
Jars: Make STERLING Serial Number 11 Test Tool Length 33 ft. Tool Size 3 1/2-IF in.  
Did Well Flow? NO Reversed Out NO Anchor Length 78(14.5A) ft. Size 4 1/2-FH in.  
Main Hole Size 7 7/8 Tool Joint Size 4 1/2 XH in. Surface Choke Size 1 in. Bottom Choke Size 5/8 in.

Blow: 1st Open: WSB-BUILT TO 2 3/4" IN 30 MINUTES NOBB  
2nd Open: WSB-BUILT TO 5" IN 45 MINUTES NOBB

Recovered 106 ft. of GAS IN PIPE  
Recovered 12 ft. of CLEAN OIL GRAVITY 31.5 @ 60 DEGREES  
Recovered 38 ft. of HOCM 43%O 57%M  
Recovered 50 ft. of TOTAL FLUID

Recovered _____ ft. of _____	Price Job
Recovered _____ ft. of _____	Other Charges
Remarks: _____	Insurance
TOOL SAMPLE: <u>100%O</u>	Total

Time Set Packer(s) 6:38P.M. A.M. P.M. Time Started Off Bottom 10:53P.M. A.M. P.M. Maximum Temperature 128

Initial Hydrostatic Pressure..... (A) 2129 P.S.I.  
Initial Flow Period..... Minutes 30 (B) 17 P.S.I. to (C) 24 P.S.I.  
Initial Closed In Period..... Minutes 60 (D) 1032 P.S.I.  
Final Flow Period..... Minutes 45 (E) 27 P.S.I. to (F) 35 P.S.I.  
Final Closed In Period..... Minutes 120 (G) 1099 P.S.I.  
Final Hydrostatic Pressure..... (H) 2124 P.S.I.

Diamond Testing shall not be liable for damages of any kind to the property or personnel of the one for whom a test is made or for any loss suffered or sustained, directly or indirectly, through the use of its equipment, or its statement or opinion concerning the result of any test. Tools lost or damaged in the hole shall be paid for at cost by the party for whom the test is made.