

VESS OIL CORPORATION  
YOUNGER LEASE  
SW.1/4, SECTION 7, T10S, R16W  
ROOKS COUNTY, KANSAS

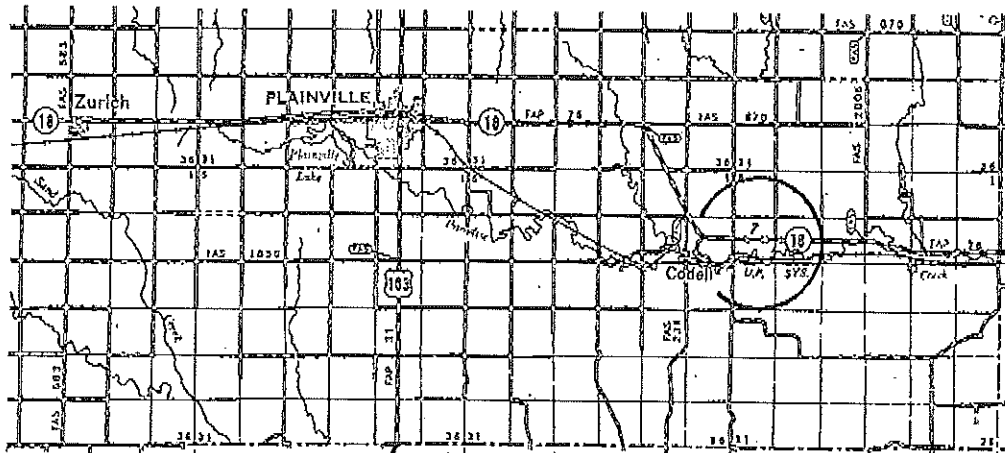
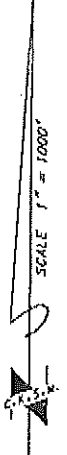
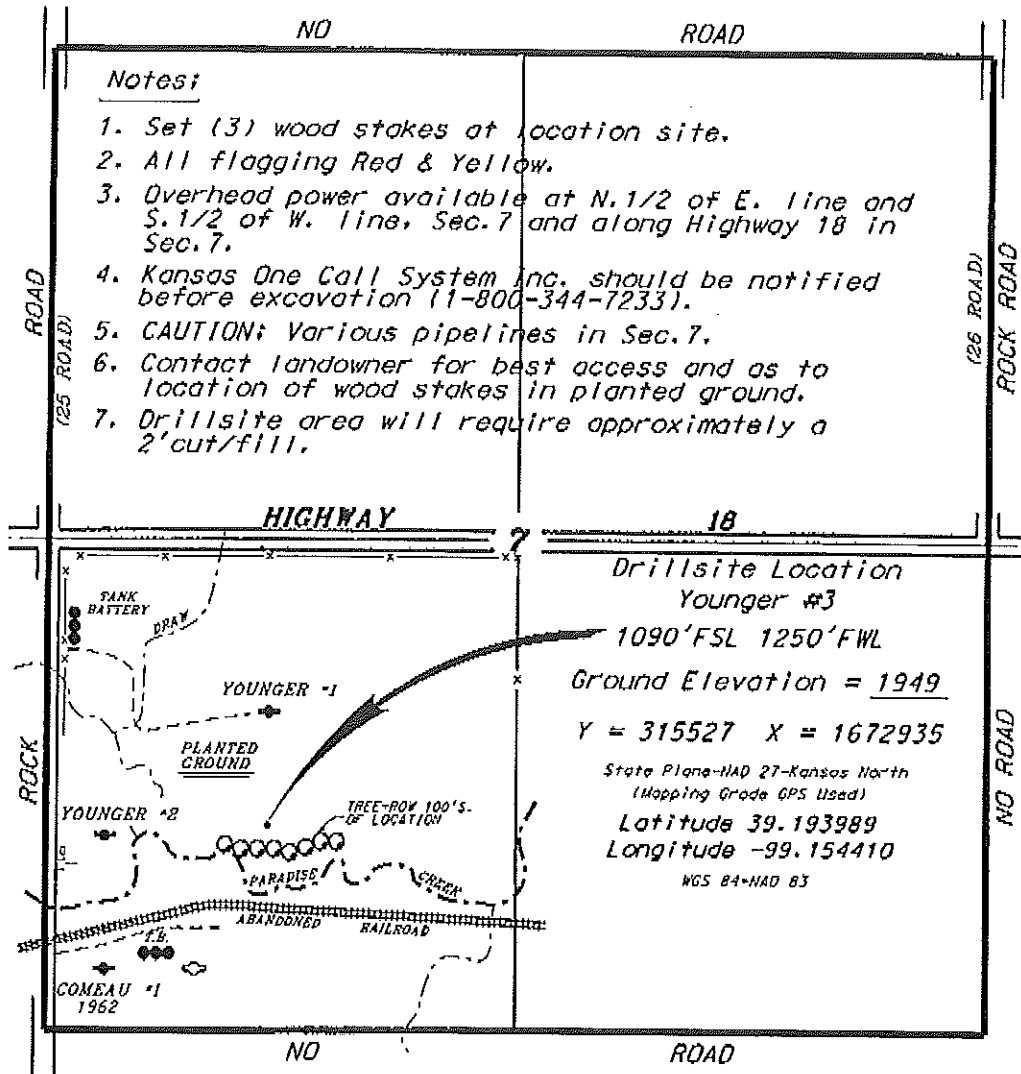
Directions:

From the intersection of Highway 18 and a N-S county road 0.75 miles East of Codell, Kansas, go 0.29 miles South of a county road, then go 0.23 miles East to location.

Notes:

1. Set (3) wood stakes at location site.
2. All flagging Red & Yellow.
3. Overhead power available at N.1/2 of E. line and S.1/2 of W. line, Sec.7 and along Highway 18 in Sec.7.
4. Kansas One Call System Inc. should be notified before excavation (1-800-344-7233).
5. CAUTION: Various pipelines in Sec.7.
6. Contact landowner for best access and as to location of wood stakes in planted ground.
7. Drillsite area will require approximately a 2' cut/fill.

\*Ingress and egress to location as shown on this plat is for usage only and may not be legally opened for public use. Contact landowner, tenant and county road department for access.



\* Controlling data is based upon the best maps and photographs available to us and upon a regular section of land containing 360 acres.

\* Approximate section lines were determined using the normal standard of care of oilfield surveyors practicing in the state of Kansas. The section corners, when established, the precise section lines were not necessarily located, and the exact location of the drillsite location in the section is not guaranteed. Therefore, the operator securing this service and accepting this plat and all other parties relying thereon agree to hold Central Kansas Oilfield Services, Inc., its officers and employees harmless from all losses, costs and expenses and hold entities harmless from any liability from incidental or consequential damages.

\* Elevations derived from National Geodetic Vertical Datum.

Date July 14, 2015