

The Road to Excellence Starts with Safety

Sold To #: 372073	Ship To #: 3665375	Quote #: 0022059416	Sales Order #: 0902494693
Customer: TAPSTONE ENERGY LLC		Customer Rep: BIIL O.	
Well Name: CARTMILL 9-34-7		Well #: 1H	API/UWI #: 15-077-22144-01
Field:	City (SAP): ANTHONY	County/Parish: HARPER	State: KANSAS
Legal Description: N2 NE NW NE-16-34S-7W-230FNL-1650FEL			
Contractor: NOMAC		Rig/Platform Name/Num: NOMAC 07	
Job BOM: 7521			
Well Type: HORIZONTAL OIL			
Sales Person: HALAMERICA\HX25353		Srvc Supervisor: Juan Becerra	

Job

Formation Name	
Formation Depth (MD)	Top <input type="text"/> Bottom <input type="text"/>
Form Type	BHST
Job depth MD	819ft Job Depth TVD <input type="text"/>
Water Depth	Wk Ht Above Floor <input type="text"/>
Perforation Depth (MD)	From <input type="text"/> To <input type="text"/>

Well Data

Description	New / Used	Size in	ID in	Weight lbm/ft	Thread	Grade	Top MD ft	Bottom MD ft	Top TVD ft	Bottom TVD ft
Open Hole Section			12.25				0	819		
Casing	3	9.625	8.921	36	LTC	J-55	0	819		

Tools and Accessories

Type	Size in	Qty	Make	Depth ft	Type	Size in	Qty	Make
Guide Shoe	9.625			819	Top Plug	9.625	1	HES
Float Shoe	9.625				Bottom Plug	9.625		HES
Float Collar	9.625				SSR plug set	9.625		HES
Insert Float	9.625				Plug Container	9.625		HES
Stage Tool	9.625				Centralizers	9.625		HES

Miscellaneous Materials

Gelling Agt	Conc	Surfactant	Conc	Acid Type	Qty	Conc
Treatment Fld	Conc	Inhibitor	Conc	Sand Type	Size	Qty

Fluid Data

Stage/Plug #: 1										
Fluid #	Stage Type	Fluid Name	Qty	Qty UoM	Mixing Density lbm/gal	Yield ft ³ /sack	Mix Fluid Gal	Rate bbl/min	Total Mix Fluid Gal	
1	Water Spacer	Water Spacer	10	bbl	8.33			4		

Fluid #	Stage Type	Fluid Name	Qty	Qty UoM	Mixing Density lbm/gal	Yield ft ³ /sack	Mix Fluid Gal	Rate bbl/min	Total Mix Fluid Gal
2	Primary Cement	SWIFTCEM (TM) SYSTEM	500	sack	15.1	1.3		4	6.1

2 %	CALCIUM CHLORIDE, PELLET, 50 LB (101509387)
94 lbm	CMT - STANDARD - CLASS A REG OR TYPE I, BULK (100003684)
0.1250 lbm	POLY-E-FLAKE (101216940)

Fluid #	Stage Type	Fluid Name	Qty	Qty UoM	Mixing Density lbm/gal	Yield ft3/sack	Mix Fluid Gal	Rate bbl/mi n	Total Mix Fluid Gal
3	Displacement	Displacement	59	bbl	8.33			5	

Cement Left In Pipe	Amount	42 ft	Reason	Shoe Joint
Mix Water: pH ##	Mix Water Chloride: ## ppm		Mix Water Temperature: ## °F °C	
Cement Temperature: ## °F °C	Plug Displaced by: ## lb/gal kg/m3 XXXX		Disp. Temperature: ## °F °C	
Plug Bumped? Yes/No	Bump Pressure: ##### psi MPa		Floats Held? Yes/No	
Cement Returns: ## bbl m3	Returns Density: ## lb/gal kg/m3		Returns Temperature: ## °F °C	

Comment BUMP PLUG, FLOAT HELD, GOT BACK 30 BBL OF GOOD CEMENT BACK TO SURFACE, RIG USED 100 LBS OF SUGAR, TAKEING BACK ALL EQUIPMENT TO EL RENO

Summary Report



Crew: _____

Sales Order #: 0902494693

WO #: 0902494693

PO/AFE #: NA

Job Start Date: 6/14/2015

Customer: TAPSTONE ENERGY LLC

Field:

Job Type: CMT SURFACE CASING BOM

UWI / API Number: 15-077-22144-01

County/Parish: HARPER

Service Supervisor: Juan Becerra

Well Name: CARTMILL 9-34-7

State: KANSAS

Well No: 1H

Latitude: 37.093507

Cust Rep Name: BILL O.

Longitude: -98.080636

Cust Rep Phone #:

Sect / Twn / Rng: 16/34/7

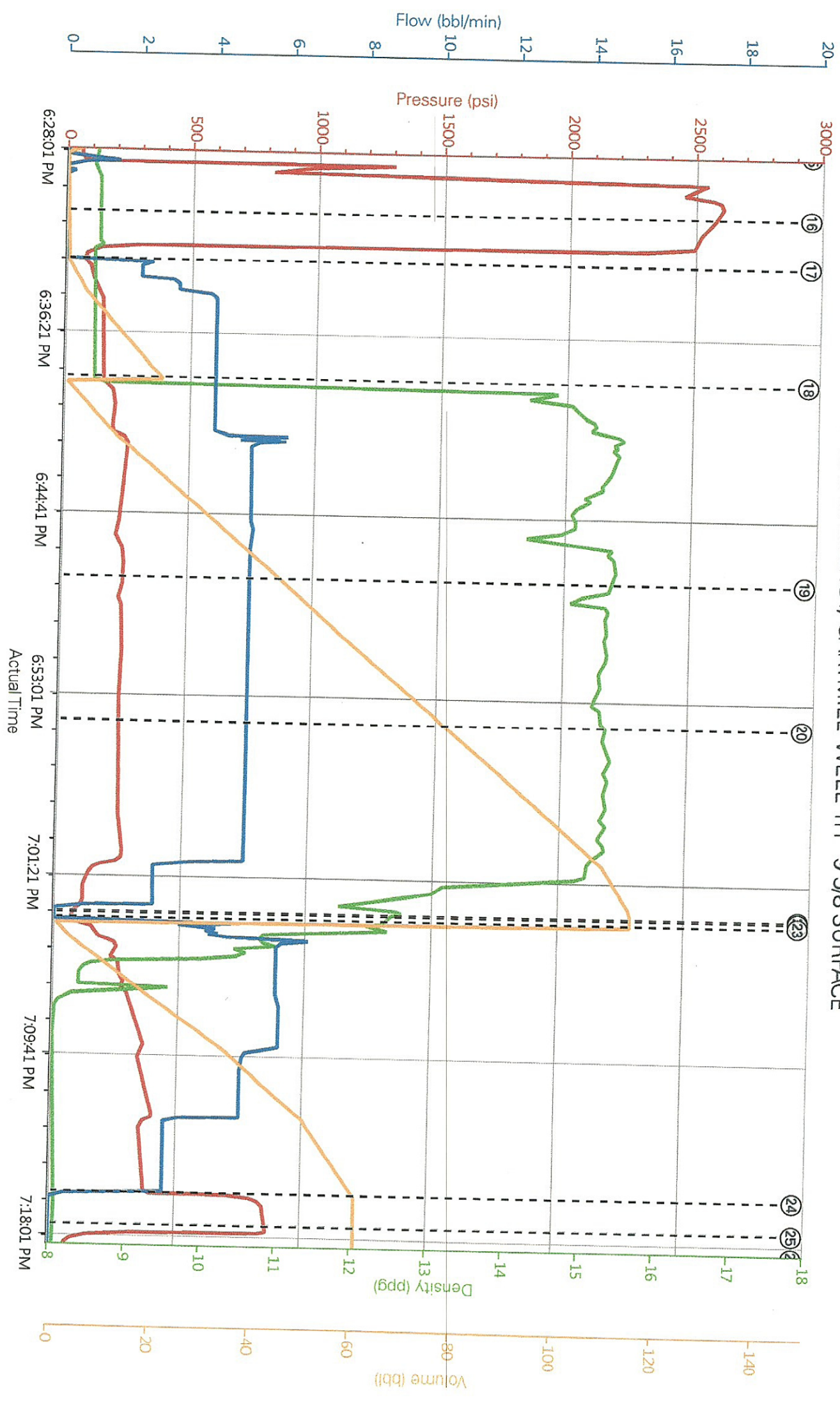
Remarks:

The Information Stated Herein Is Correct

Customer Representative Signature

Date

Customer Representative Printed Name



- 15 Start Job
- 16 Test Lines
- 17 Pump Spacer 1
- 18 Pump Cement
- 19 Check weight
- 20 Check weight
- 21 Shutdown
- 22 Drop Top Plug
- 23 Pump Displacement
- 24 Bump Plug
- 25 Other
- 26 E

HALLIBURTON | iCem® Service

Customer : TAPSTONE ENERGY LLC

Job Date : 6/14/2015 2:27:05 PM

Created: 2015-06-14 05:51:12, Version: 4.1.107

Edit