

The Road to Excellence Starts with Safety

Sold To #: 372073	Ship To #: 3665375	Quote #: 0022058960	Sales Order #: 0902497564
Customer: TAPSTONE ENERGY LLC		Customer Rep:	
Well Name: CARTMILL 9-34-7		Well #: 1H	API/UWI #: 15-077-22144-01
Field:	City (SAP): ANTHONY	County/Parish: HARPER	State: KANSAS
Legal Description: N2 NE NW NE-16-34S-7W-230FNL-1650FEL			
Contractor: NOMAC		Rig/Platform Name/Num: NOMAC 07	
Job BOM: 7522			
Well Type: HORIZONTAL OIL			
Sales Person: HALAMERICA\HX25353		Srvc Supervisor: Rayland Thompson	

Job

Formation Name			
Formation Depth (MD)	Top		Bottom
Form Type			BHST 131 degF
Job depth MD	5350ft		Job Depth TVD
Water Depth			Wk Ht Above Floor 4ft
Perforation Depth (MD)	From		To

Well Data

Description	New / Used	Size in	ID in	Weight lbm/ft	Thread	Grade	Top MD ft	Bottom MD ft	Top TVD ft	Bottom TVD ft
Casing	3	9.625	8.921	36	LTC	J-55	0	814		
Casing	3	7	6.276	26	LTC	P-110	0	5132	0	4576
Open Hole Section			8.75				814	5132		

Tools and Accessories

Type	Size in	Qty	Make	Depth ft	Type	Size in	Qty	Make
Guide Shoe	7	1		5132	Top Plug	7	1	HES
Float Shoe	7	1			Bottom Plug	7	1	HES
Float Collar	7	1			SSR plug set	7	1	HES
Insert Float	7	1			Plug Container	7	1	HES
Stage Tool	7	1			Centralizers	7	1	HES

Miscellaneous Materials

Gelling Agt	Conc	Surfactant	Conc	Acid Type	Qty	Conc
Treatment Fld	Conc	Inhibitor	Conc	Sand Type	Size	Qty

Fluid Data

Stage/Plug #: 1									
Fluid #	Stage Type	Fluid Name	Qty	Qty UoM	Mixing Density lbm/gal	Yield ft ³ /sack	Mix Fluid Gal	Rate bbl/min	Total Mix Fluid Gal
1	Mud Flush III (Liquid)	Mud Flush III	10	bbl	8.33			5	
41 gal/bbl		FRESH WATER							

Fluid #	Stage Type	Fluid Name	Qty	Qty UoM	Mixing Density lbm/gal	Yield ft ³ /sack	Mix Fluid Gal	Rate bbl/mi n	Total Mix Fluid Gal	
2	Lead Cement	ECONOCEM (TM) SYSTEM	140	sack	13.6	1.508		5	7.33	
	4 %	BENTONITE, BULK (100003682)								
	0.40 %	HALAD(R)-9, 50 LB (100001617)								
	47 lbm	CMT - STANDARD - CLASS A REG OR TYPE I, BULK (100003684)								
	41.50 lbm	POZMIX A FLYASH (100003690)								
Fluid #	Stage Type	Fluid Name	Qty	Qty UoM	Mixing Density lbm/gal	Yield ft ³ /sack	Mix Fluid Gal	Rate bbl/mi n	Total Mix Fluid Gal	
3	Tail Cement	HALCEM (TM) SYSTEM	100	sack	15.6	1.196		5	5.43	
	0.40 %	HALAD(R)-9, 50 LB (100001617)								
	94 lbm	CMT - PREMIUM - CLASS H REG OR TYPE V, BULK (100003687)								
Fluid #	Stage Type	Fluid Name	Qty	Qty UoM	Mixing Density lbm/gal	Yield ft ³ /sack	Mix Fluid Gal	Rate bbl/mi n	Total Mix Fluid Gal	
4	Displacement	Displacement	201	bbl	8.33			5		
Cement Left In Pipe		Amount	85 ft		Reason			Shoe Joint		
Comment										

Event 11	Test Lines	Test Lines	6/21/2015	20:20:56	COM6	20.00	8.39	0.00	46.6	Test Kickouts to 500 psi Test Lines to 5000 psi
Event 12	Pump Spacer 1	Pump Mud Flush III	6/21/2015	20:27:05	COM6	31.00	8.38	0.70	47.2	Pump 10 bbls Mud Flush @ 2bpm Start bringing on CMT up to weight
Event 13	Pump Lead Cement	Pump Lead Cement	6/21/2015	20:33:29	COM6	293.00	13.54	2.00	12.2	Pump 140 sks 38 bbls 13.6# lead cnt starting @ 2bpm until weight was under control
Event 14	Check Weight	Check weight	6/21/2015	20:35:44	COM6	404.00	13.51	4.30	8.6	13.5#
Event 15	Pump Tail Cement	Pump Tail Cement	6/21/2015	20:42:37	COM6	145.00	14.67	2.00	32.0	Pump 100 sks @ 15.6# 21 bbls starting @ 2 bpm until up to weight then brought to 4bpm
Event 16	Check Weight	Check weight	6/21/2015	20:43:08	COM6	147.00	15.20	2.00	1.0	15.6#
Event 17	Clean Lines	Wash-up	6/21/2015	20:52:02	COM6	58.00	15.36	1.10	25.2	Wash up on top of the plug
Event 18	Drop Top Plug	Drop Top Plug	6/21/2015	20:52:43	COM6					Drop 7" top plug
Event 19	Pump Displacement	Pump Displacement	6/21/2015	20:52:51	COM6					Pump 201 bbls Fresh Water with the first 10 bbls used to wash up slowing down @ 185 bbls to 3 bpm to land the plug
Event 20	Other	Other	6/21/2015	21:24:04	COM6					Bottom plug landed
Event 21	Bump Plug	Bump Plug	6/21/2015	21:35:58	COM6					Top Plug landed pressured up to 500# over psi to land
Event 22	Other	Check Floats	6/21/2015	21:37:11	COM6					Floats Held got back 1 1/2 bbls
Event 23	End Job	End Job	6/21/2015	21:49:54	USER	2.00	8.75	0.00	206.6	Pumping complete
Event 24	Pre-Rig Down Safety Meeting	Pre-Rig Down Safety Meeting	6/21/2015	22:02:00	USER					Discuss rig down with crew members discussed weather the temp outside and to drink lots of water and take breaks

iCem[®] Service

(v. 4.1.107)

Created: Sunday, June 21, 2015

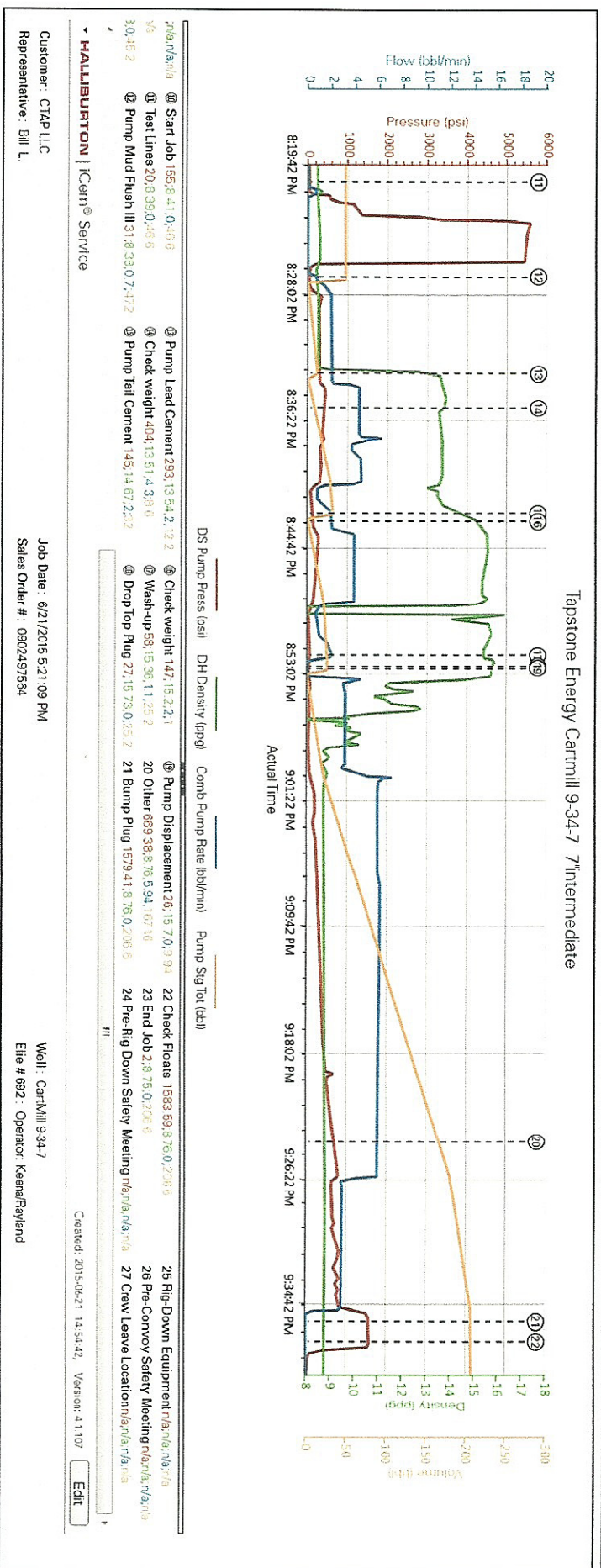
HALLIBURTON

Customer: CTAP LLC
Job: 902497564 Tapstone (catrmlil) Inter
Case: Case 1

Event	25	Rig-Down Equipment	Rig-Down Equipment	6/21/2015	22:15:00	USER	Rig down Halliburton iron & hoses check for all halliburton fittings
Event	26	Pre-Convoy Safety Meeting	Pre-Convoy Safety Meeting	6/22/2015	00:00:00	USER	Discuss route & hazards on roadways go over DOThrs and everyones fit for duty status
Event	27	Crew Leave Location	Crew Leave Location	6/22/2015	00:15:00	USER	Thank You For Choosing Halliburton Rayland & Crew

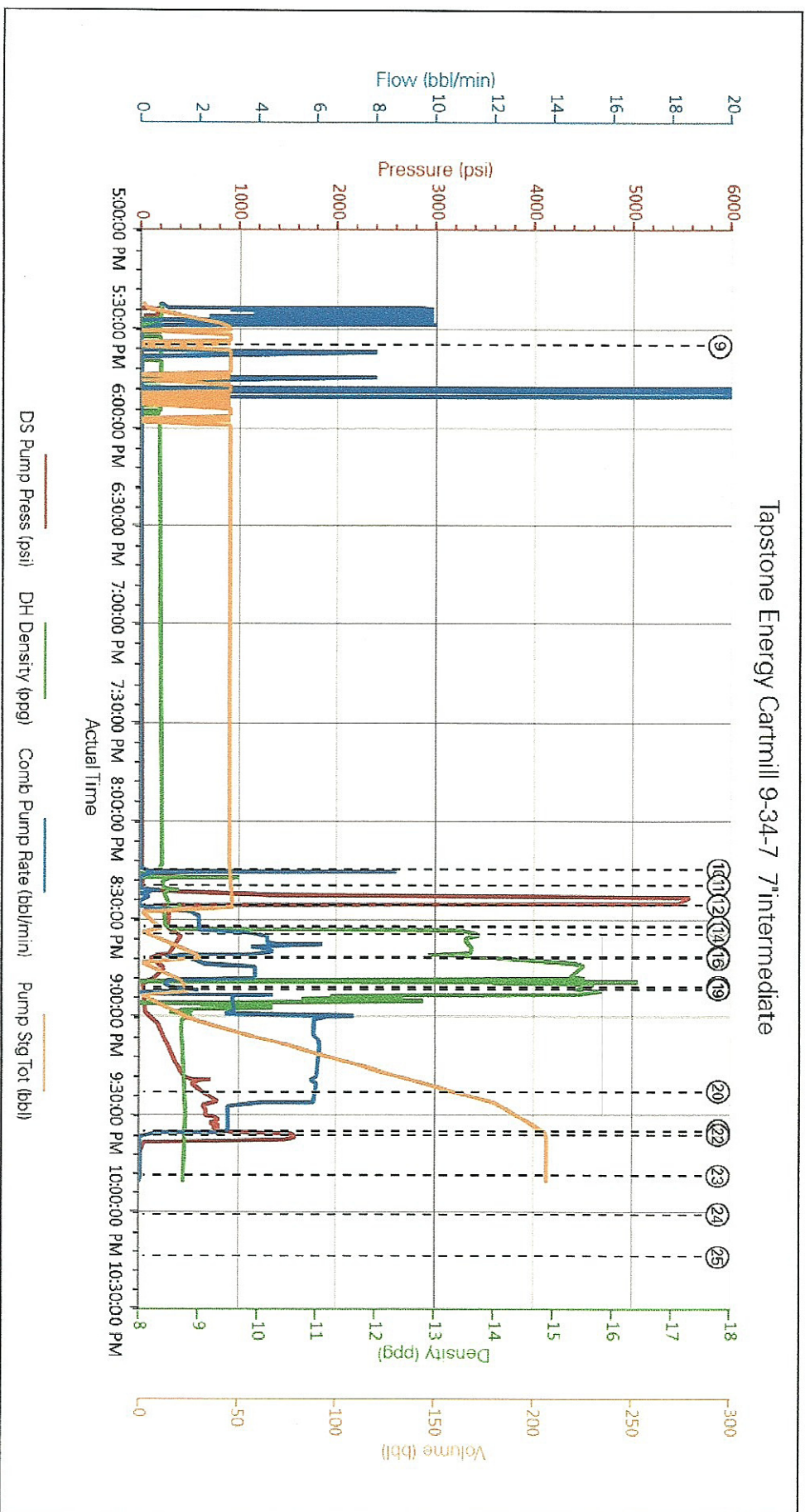
2.0 Attachments

2.1 Tapstone 7 Inter.png

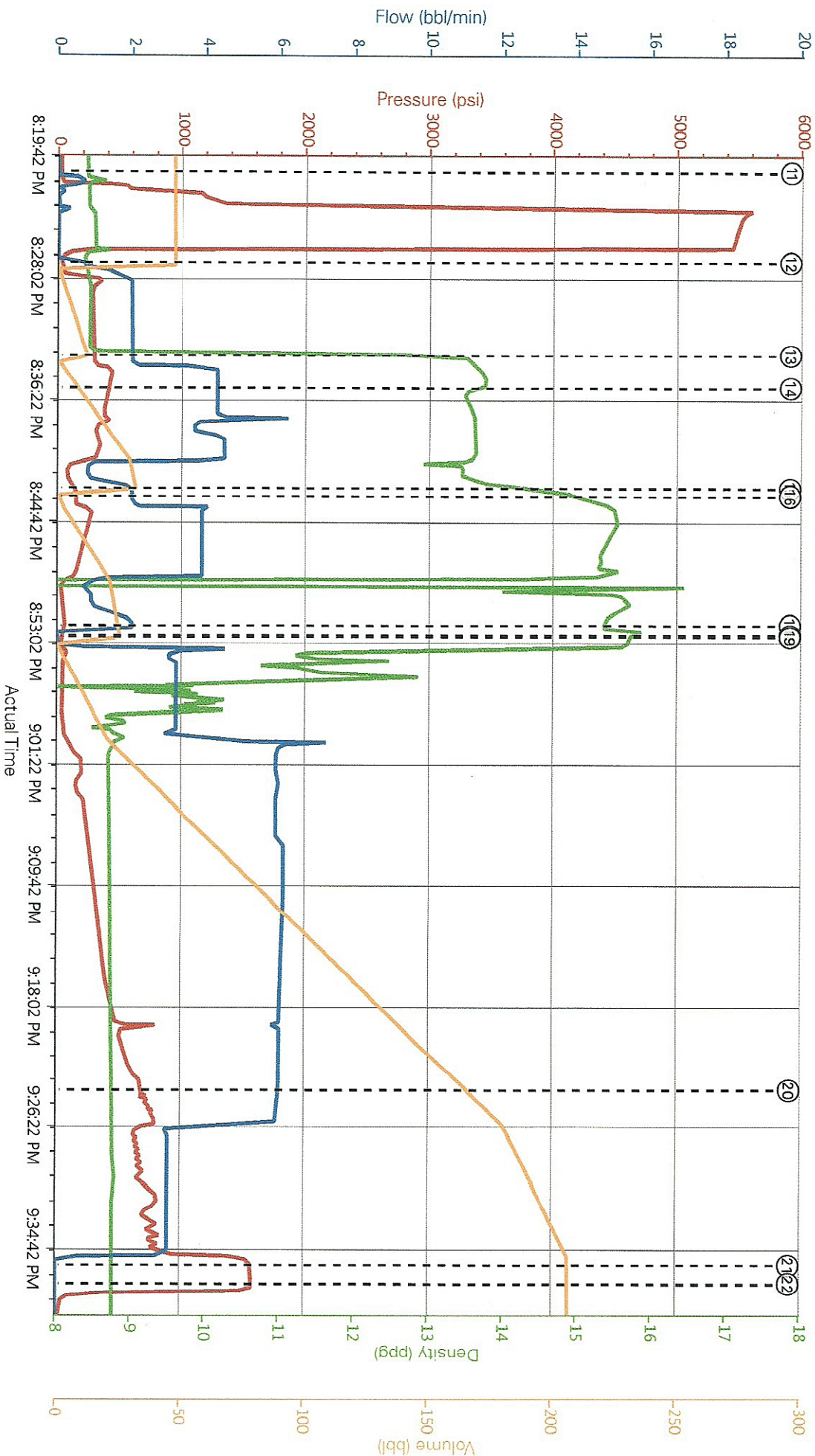


3.0 Custom Graphs

3.1 Custom Graph



Tapstone Energy Cartmill 9-34-7 7" Intermediate



Time	Event	Value
8:19:42 PM	Start Job	155;8.41;0.46;6
8:28:02 PM	Test Lines	20;8.39;0.46;6
8:36:22 PM	Pump Mud Flush III	31;8.38;0.7;4;72
8:44:42 PM	Pump Lead Cement	293;13.54;2;12.2
8:53:02 PM	Check weight	404;13.51;4.3;8.6
9:01:22 PM	Check weight	147;15.2;2.1
9:09:42 PM	Wash-up	58;15.36;1.1;25.2
9:18:02 PM	Pump Displacement	26;15.7;0.9;94
9:26:22 PM	Other	669;38;8.76;5.94;187;16
9:34:42 PM	End Job	2;8.75;0.206;6
	Pump Tail Cement	145;14.67;2;32
	Drop Top Plug	27;15.73;0;25;2
	Bump Plug	1579.41;8.76;0.2006;6
	Check Floats	1583.59;8.76;0;20
	Pre-Rig Down	Safety Meeting

Customer: CTAP LLC
 Representative: Bill L.
 Job Date: 6/21/2015 5:21:09 PM
 Sales Order #: 0902497564
 Well: Cartmill 9-34-7
 Elite #: 692 Operator: Keena/Rayland
 Created: 2015-06-21 14:54:42 Version: 4.1.107