

JAMES C. MUSGROVE

Petroleum Geologist, LLC

212 Main Street

P.O. Box 215

Clafin, KS 67525

Office (620) 588-4250

Res. Clafin (620) 587-3444

Mai Oil Operations
Milton #1
NW-SW-NE (3630' FSL & 2310' FEL)
Section 29-21s-12w
Stafford County, Kansas

Page 1

5 1/2" Production Casing Set

Contractor: Southwind Drilling Co. (rig #3)
Commenced: April 24, 2015
Completed: April 30, 2015
Elevation: 1866' K.B., 1864' D.F., 1858' G.L.
Casing program: Surface; 8 5/8" @ 642
Production, 5 1/2" @ 3701'
Sample: Samples saved and examined 2900' to the Rotary Total Depth.
Drilling time: One (1) foot drilling time recorded and kept 2900' to the Rotary Total Depth.
Measurements: All depths measured from the Kelly Bushing.
Drill Stem Tests: There were five (5) Drill Stem Tests ran by Trilobite Testing Co.
Electric Log: By Nabors, Dual Induction, Compensated Density/Neutron and Micro Log.

<u>Formation</u>	<u>Log Depth</u>	<u>Sub-Sea Datum</u>
Anhydrite	661	+1205
Base Anhydrite	684	+1182
Heebner	3119	-1253
Toronto	3137	-1271
Douglas	3151	-1285
Brown Lime	3249	-13.83
Lansing	3257	-1391
Base Kansas City	3488	-1622
Viola	3496	-1630
Simpson Shale	3525	-1659
Arbuckle	3574	-1708
Rotary Total Depth	3700	-1834
Log Total Depth	3702	-1836

All tops and zones corrected to Electric Log Measurement

SAMPLE ANALYSIS, SHOWS OF OIL, TESTING DATA, ETC.

TOPEKA SECTION

2900-3119 No shows of oil and/or gas was noted in the drilling of the Topeka Section. (See attached sample log/geologist report)

TORONTO SECTION

3137-3150' Limestone, tan, buff, finely crystalline chalky, poor visible porosity, no shows.

LANSING SECTION

32573270' Limestone, tan, finely crystalline, poor visible porosity, light black spotty stain, no free oil and no odor in fresh samples.

3280-3286' Limestone, tan, finely crystalline, poor scattered vuggy type porosity, black stain, no free oil and no odor in fresh samples.

3296-3304' Limestone, cream, tan, finely crystalline, fossiliferous, fair porosity, light brown stain, show of free oil and fair odor in fresh samples.

3308-3315' Limestone, tan, finely crystalline, fossiliferous, fair fossil cast/vuggy type porosity, trace stain, show of free oil and fair odor in fresh samples.

3320-3324' Limestone, tan, cream, oolitic, finely crystalline, few fossiliferous, poorly developed porosity, black heavy stain, trace of free oil and fair odor in fresh samples.

Drill Stem Test #1 **3260-3325**
(Log Depth 3262-3327)

Times: 30-30-45-45

Blow: Strong

Recovery: 2304' gas in pipe
25' slightly gas cut mud, trace of oil

Pressures: ISIP 444 psi
FSIP 415 psi
IFP 28-33 psi
FFP 30-35 psi
HSH 1603-1550 psi

3341-3351' Limestone, tan, buff, finely crystalline, few fossiliferous, poor scattered vuggy type porosity, light brown stain, show of free oil and faint. Fair odor in fresh samples.

3352-3370' Limestone, cream, tan, finely crystalline, poor visible porosity, no shows.

3370-3380' Limestone, cream, tan, finely crystalline, few fossiliferous, poor visible porosity, no shows.

3388-3396' Limestone, tan, cream, oomoldic, good oomoldic porosity, chalky in part, light brown stain, show of free oil and fair odor in fresh samples.

3404-3414' Limestone, tan, buff, oomoldic, poorly developed oomoldic porosity, light brown stain, show of free oil and fair odor in fresh samples.

- 3426-3432' Limestone, tan, oolitic, oomoldic, poor to fair oomoldic porosity, light brown stain, show of free oil and faint odor in fresh samples.
- 3448-3460' Limestone, cream tan, buff, finely crystalline, few fossiliferous, poor visible porosity, cherty in part, trace black stain, no free oil and faint odor in fresh samples.

Drill Stem Test #2 **3378-3470**
(Log Depth 3380-3472)

Times: 30-30-45-45

Blow: Strong, gas to surface in 28 mins, T.STM
2nd flow gas gauged as follows:
15 mins 11,000 cfgpd
30 mins 15,870 cfgpd
45 mins 15,870 cfgpd

Recovery: 62' heavily oil cut mud
(5% gas; 40% oil 55% mud)

Pressures: ISIP 874 psi
FSIP 862 psi
IFP 53-75 psi
FFP 59-92 psi
HSH 1711-1648 psi

VIOLA SECTION

- 3496-3510' Chert, white, tan, boney; light brown spotty, golden brown stain, show of free oil and faint odor in fresh samples.
- 3510-3525' Chert; as above, brown/golden brown stain show of free oil and faint odor in fresh samples.

Drill Stem Test #3 **3482-3532**
(Log Depth 3484-3534)

Times: 30-30-45-45

Blow: Weak

Recovery: 54' gas in pipe
10' slightly gas cut mud, trace of oil

Pressures: ISIP 55 psi
FSIP 83 psi
IFP 30-33 psi
FFP 48-69 psi
HSH 1821-1646 psi

ARBUCKLE SECTION

- 3574-3582' Dolomite, tan, finely crystalline, slightly cherty, scattered porosity, light brown stain, show of free oil and strong odor in fresh samples.

Drill Stem Test #4 **3516-3580**
(Log Depth 3518-3582)

Times: 30-30-45-45

Blow: Strong, gas to surface in 25 mins, T.S.T.M.

Recovery: 1503' gas in pipe
1887' slightly mud cut oil
(2% gas; 97% oil; 1% mud)
64' oil and gas cut mud
(40% gas; 20% oil; 40% mud)
64' oil and gas cut mud
(40% gas; 15% oil; 45% mud)

Pressures: ISIP 1197 psi
FSIP 1195 psi
IFP 204-404 psi
FFP 377-728 psi
HSH 1759-1730 psi

3582-3592 Dolomite, cream, tan, finely crystalline, sucrosic, poor to fair visible porosity, brown stain, show of free oil and strong odor in fresh samples

Drill Stem Test #5 **3582-3590**
(Log Depth 3584-3592)

Times: 30-30-30-30

Blow: Strong, gas to surface in 4 mins, T.STM
Final flow G.T.S., gas gauged as follows:
10 mins 6,140 cfgpd
20 mins 6,330 cfgpd
30 mins 6,330 cfgpd

Recovery: 704' gas in pipe
2432' slightly muddy gassy oil
(5% gas; 93% oil 2% mud)
320' mud cut gassy oil
(36% gas; 62% oil; 2% mud)
128' mud cut gassy oil
(25% gas; 60% oil; 15% mud)

Pressures: ISIP 1215 psi
FSIP 1211 psi
IFP 246-579 psi
FFP 559-865 psi
HSH 1698-1726 psi

3594-3604' Dolomite, cream, tan, sucrosic, poor to fair pin point and inter-crystalline porosity, few vuggy type porosity, brown stain, show of free oil and strong odor in fresh samples.

3610-3616' Dolomite, tan, buff, sucrosic, poor to fair scattered vuggy porosity, brown stain, show of free oil and fair odor in fresh samples.

Mai Oil Operations
Milton #1
NW-SW-NE (3630' FSL & 2310' FEL)
Section 29-21s-12w
Stafford County, Kansas

Page 5

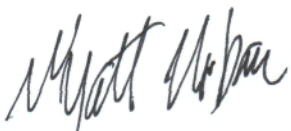
3616-3625'	Dolomite, tan, buff, finely crystalline, dense, few cherty, no shows.
3627-3640'	Dolomite, white, cream finely crystalline, sucrosic, fair porosity, brown stain, show of free oil and strong odor in fresh samples.
3640-3650'	Dolomite, white, tan, finely crystalline, fair scattered vuggy porosity, brown stain, show of free oil and strong odor in fresh samples.
3650-3660'	Dolomite, white/cream, fair porosity, brown stain, show of oil and strong odor in fresh samples.
3660-3680'	Dolomite, white, finely crystalline, cherty, dense, plus chert, white, boney, no shows and strong odor in fresh samples.
3680-3700'	Dolomite, white, tan, buff, finely crystalline, poor visible porosity, cherty in part, plus white, boney to opaque chert, no show of oil and fair odor in fresh samples.

Rotary Total Depth	3700
Log Total Depth	3702

Recommendations:

The 5 1/2" production casing was set and cemented on Mai Oil Operation Inc., Milton #1.

Respectfully yours,



Wyatt Urban
Petroleum Geologist



TRILOBITE TESTING, INC.

DRILL STEM TEST REPORT

Mai Oil Operations
 8411 Preston RD STE 800
 Dallas, TX 75225
 ATTN: Wyatt Urban

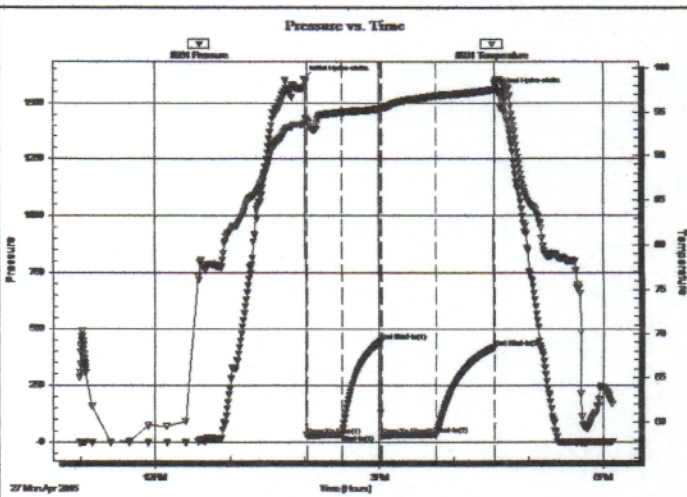
29-21s-12w Stafford,KS
Milton #1
 Job Ticket: 57815 DST#: 1
 Test Start: 2015.04.27 @ 10:59:30

GENERAL INFORMATION:

Formation: **LKC 'A-D'**
 Deviated: No Whipstock: ft (KB)
 Time Tool Opened: 14:02:30
 Time Test Ended: 18:07:30
 Interval: **3260.00 ft (KB) To 3325.00 ft (KB) (TVD)**
 Total Depth: 3325.00 ft (KB) (TVD)
 Hole Diameter: 7.88 inches Hole Condition: Fair
 Test Type: Conventional Bottom Hole (Initial)
 Tester: Matt Smith
 Unit No: 53
 Reference Elevations: 1866.00 ft (KB)
 1858.00 ft (CF)
 KB to GR/CF: 8.00 ft

Serial #: 8931 **Inside**
 Press@RunDepth: 34.90 psig @ 3261.00 ft (KB) Capacity: 8000.00 psig
 Start Date: 2015.04.27 End Date: 2015.04.27 Last Calib.: 2015.04.27
 Start Time: 10:59:35 End Time: 18:07:29 Time On Btm: 2015.04.27 @ 13:59:30
 Time Off Btm: 2015.04.27 @ 16:34:45

TEST COMMENT: IF: Strong blow . B.O.B. in 40 secs.
 IS: No blow . Bled off in 3 mins.
 FF: Strong blow . B.O.B. immediately.
 FS: No blow . Bled of in 5 mins.



PRESSURE SUMMARY

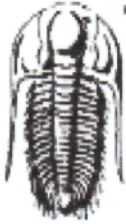
Time (Min.)	Pressure (psig)	Temp (deg F)	Annotation
0	1602.50	93.55	Initial Hydro-static
3	27.63	94.03	Open To Flow (1)
31	33.02	94.99	Shut-In(1)
62	443.65	95.40	End Shut-In(1)
63	30.05	95.47	Open To Flow (2)
106	34.90	96.80	Shut-In(2)
153	414.69	97.52	End Shut-In(2)
156	1550.37	98.68	Final Hydro-static

Recovery

Length (ft)	Description	Volume (bbl)
25.00	SltOGM 1g 99m	0.35
0.00	2,304' G.I.P. 100%g	0.00

Gas Rates

	Choke (inches)	Pressure (psig)	Gas Rate (Mcf/d)



TRILOBITE TESTING, INC.

DRILL STEM TEST REPORT

Mai Oil Operations
 8411 Preston RD STE 800
 Dallas, TX 75225
 ATTN: Wyatt Urban

29-21s-12w Stafford,KS
Milton #1
 Job Ticket: 57816 DST#: 2
 Test Start: 2015.04.28 @ 04:42:35

GENERAL INFORMATION:

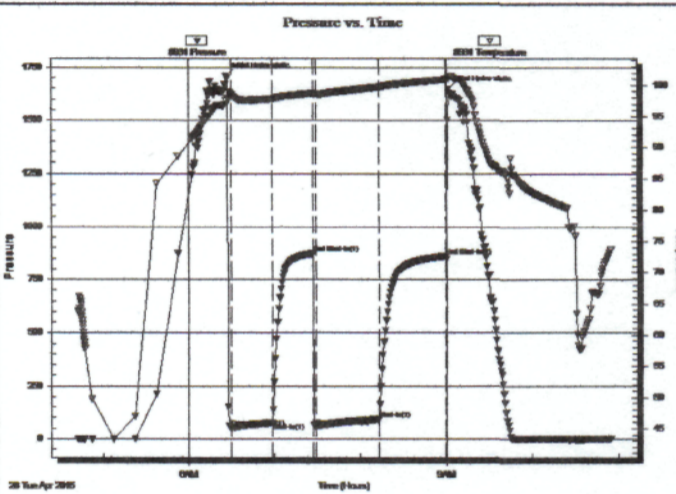
Formation: **Lower LKC**
 Deviated: No Whipstock: ft (KB)
 Time Tool Opened: 06:29:35
 Time Test Ended: 10:54:35
 Interval: **3378.00 ft (KB) To 3470.00 ft (KB) (TVD)**
 Total Depth: 3470.00 ft (KB) (TVD)
 Hole Diameter: 7.88 inches Hole Condition: Fair
 Test Type: Conventional Bottom Hole (Reset)
 Tester: Matt Smith
 Unit No: 53
 Reference Elevations: 1866.00 ft (KB)
 1858.00 ft (CF)
 KB to GRV/CF: 8.00 ft

Serial #: 8931

Inside

Press@RunDepth: 92.33 psig @ 3379.00 ft (KB) Capacity: 8000.00 psig
 Start Date: 2015.04.28 End Date: 2015.04.28 Last Calib.: 2015.04.28
 Start Time: 04:42:40 End Time: 10:54:34 Time On Btm: 2015.04.28 @ 06:26:05
 Time Off Btm: 2015.04.28 @ 09:01:20

TEST COMMENT: IF: Strong blow . B.O.B. in 30 secs. G.T.S. in 28 mins. No gauge.
 IS: Weak blow . Surf., - 1/4" after 25 mins. Bled off in 7 mins.
 FF: Strong blow . B.O.B. & G.T.S. immediately. Gauged gas, see gas report.
 FSI: Weak blow . Surf., - 1".after 20 mins. Bled off in 10 mins.



PRESSURE SUMMARY

Time (Min.)	Pressure (psig)	Temp (deg F)	Annotation
0	1710.50	97.51	Initial Hydro-static
4	52.93	98.55	Open To Flow (1)
33	74.96	97.87	Shut-In(1)
61	873.73	98.71	End Shut-In(1)
63	58.92	98.66	Open To Flow (2)
107	92.33	99.72	Shut-In(2)
154	861.64	100.94	End Shut-In(2)
156	1647.66	101.10	Final Hydro-static

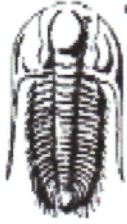
Recovery

Length (ft)	Description	Volume (bbl)
62.00	GOCM 5%g 40%o 55%m	0.87
0.00	GTS 100%g	0.00

* Recovery from multiple tests

Gas Rates

	Choke (inches)	Pressure (psig)	Gas Rate (Mcf/d)
First Gas Rate	0.13	15.00	11.00
Last Gas Rate	0.13	28.00	15.87
Max. Gas Rate	0.13	28.00	15.87



TRILOBITE TESTING, INC

DRILL STEM TEST REPORT

Mai Oil Operations
 8411 Preston RD STE 800
 Dallas, TX 75225
 ATTN: Wyatt Urban

29-21s-12w Stafford,KS
Milton #1
 Job Ticket: 57817 **DST#: 3**
 Test Start: 2015.04.28 @ 19:12:54

GENERAL INFORMATION:

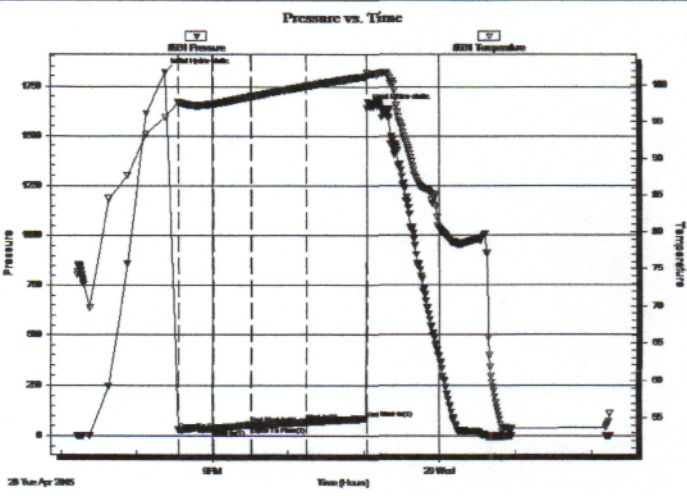
Formation: **Viola**
 Deviated: **No Whipstock:** ft (KB)
 Time Tool Opened: 20:33:39
 Time Test Ended: 02:14:39
Interval: 3482.00 ft (KB) To 3532.00 ft (KB) (TVD)
 Total Depth: 3532.00 ft (KB) (TVD)
 Hole Diameter: 7.88 inches Hole Condition: Fair
 Test Type: Conventional Bottom Hole (Reset)
 Tester: Matt Smith
 Unit No: 53
 Reference Elevations: 1866.00 ft (KB)
 1858.00 ft (CF)
 KB to GR/CF: 8.00 ft

Serial #: 8931

Inside

Press@RunDepth: 69.41 psig @ 3483.00 ft (KB) Capacity: 8000.00 psig
 Start Date: 2015.04.28 End Date: 2015.04.29 Last Calib.: 2015.04.29
 Start Time: 19:12:59 End Time: 02:14:38 Time On Btm: 2015.04.28 @ 20:22:54
 Time Off Btm: 2015.04.28 @ 23:02:24

TEST COMMENT: IF: Weak blow . Surf., - 1". Died back to surf.
 IS: No blow .
 FF: Weak blow . Surf., - 1/4". Died after 15 mins.
 FS: No blow .



PRESSURE SUMMARY

Time (Min.)	Pressure (psig)	Temp (deg F)	Annotation
0	1820.59	95.65	Initial Hydro-static
11	30.31	97.66	Open To Flow (1)
38	33.02	97.49	Shut-In(1)
68	54.67	98.44	End Shut-In(1)
69	47.92	98.45	Open To Flow (2)
112	69.41	99.85	Shut-In(2)
159	83.15	101.13	End Shut-In(2)
160	1646.39	101.63	Final Hydro-static

Recovery

Length (ft)	Description	Volume (bbl)
10.00	Slt OGM 1%g 99%m	0.14
0.00	54' G.I.P. 100%g	0.00

* Recovery from multiple tests

Gas Rates

	Choke (inches)	Pressure (psig)	Gas Rate (Mcf/d)



**TRILOBITE
TESTING, INC.**

DRILL STEM TEST REPORT

Mai Oil Operations
8411 Preston RD STE 800
Dallas, TX 75225
ATTN: Wyatt Urban

29-21s-12w Stafford,KS
Milton #1
Job Ticket: 57818 **DST#: 4**
Test Start: 2015.04.29 @ 09:41:34

GENERAL INFORMATION:

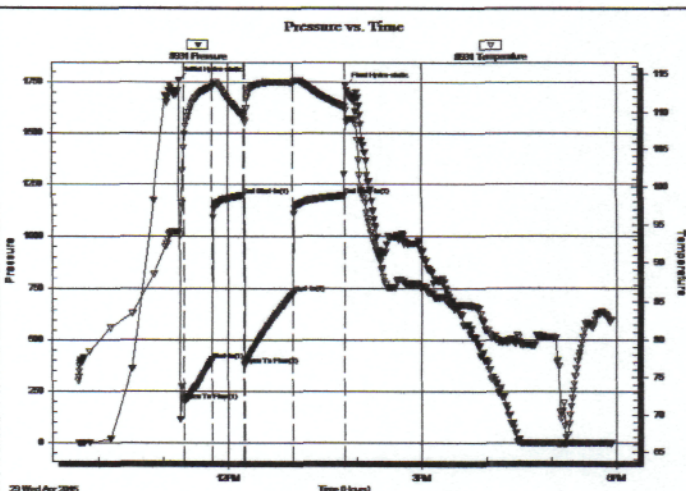
Formation: **Arbuckle**
Deviated: No Whipstock: ft (KB)
Time Tool Opened: 11:19:04
Time Test Ended: 17:55:19
Interval: **3516.00 ft (KB) To 3580.00 ft (KB) (TVD)**
Total Depth: 3580.00 ft (KB) (TVD)
Hole Diameter: 7.88 inches Hole Condition: Fair
Test Type: Conventional Bottom Hole (Reset)
Tester: Matt Smith
Unit No: 53
Reference Elevations: 1866.00 ft (KB)
1858.00 ft (CF)
KB to GR/CF: 8.00 ft

Serial #: 8931

Inside

Press@RunDepth: 727.54 psig @ 3517.00 ft (KB) Capacity: 8000.00 psig
Start Date: 2015.04.29 End Date: 2015.04.29 Last Calib.: 2015.04.29
Start Time: 09:41:39 End Time: 17:55:18 Time On Btm: 2015.04.29 @ 11:15:04
Time Off Btm: 2015.04.29 @ 13:49:04

TEST COMMENT: IF: Strong blow . B.O.B. in 2 1/2 mins.
IS: Strong blow . B.O.B. in 12 mins. G.T.S. in 25 mins.
FF: Strong blow . B.O.B. & G.T.S. immediately. T.S.T.M.
FS: Weak blow . Surf., - 1/8". Dead in 14 mins.



PRESSURE SUMMARY

Time (Min.)	Pressure (psig)	Temp (deg F)	Annotation
0	1759.21	94.17	Initial Hydro-static
4	203.77	105.09	Open To Flow (1)
31	403.97	113.29	Shut-In(1)
61	1196.61	109.37	End Shut-In(1)
61	379.12	108.90	Open To Flow (2)
106	727.54	113.85	Shut-In(2)
153	1194.63	110.66	End Shut-In(2)
154	1729.69	110.16	Final Hydro-static

Recovery

Length (ft)	Description	Volume (bbl)
64.00	OGCM 15%o 40%g 45%m	0.90
64.00	OGCM 20%o 40%g 40%m	0.90
1887.00	MCGO 1%m 2%g 97%o	26.47
0.00	GTS	0.00

* Recovery from multiple tests

Gas Rates

	Choke (inches)	Pressure (psig)	Gas Rate (Mcf/d)

QUALITY OILWELL CEMENTING, INC.

Federal Tax I.D.# 20-2886107

Phone 785-483-2025
Cell 785-324-1041

Home Office P.O. Box 32 Russell, KS 67665

No. 1808

Date	4-24-15	Sec.	29	Twp.	21	Range	12	County	Stafford	State	Ks	On Location		Finish	6:30PM
Lease								Location		Great Bend 115 to 170 Ave, SE to 50rd					
Milton								Well No.		1					
Contractor								3		Owner 1/2 S W 1/4					
Type Job								Surface		To Quality Oilwell Cementing, Inc. You are hereby requested to rent cementing equipment and furnish cementer and helper to assist owner or contractor to do work as listed.					
Hole Size				T.D.				Charge To				Mai oil operations			
12 1/4"				642'				Csg.				8 5/8"			
Csg.				Depth				Street				642'			
Tbg. Size				Depth				City				State			
Tool				Depth				The above was done to satisfaction and supervision of owner agent or contractor.							
Cement Left in Csg.				Shoe Joint				Cement Amount Ordered				20' 20' 400 60/40 3%CC 2%Gel			
Meas Line				Displace				39 1/2 BLS				1/2# Flo-seal			
EQUIPMENT								Common							
Pumptrk 20 No.				Cementer				Nick				Poz. Mix			
Bulktrk 4 No.				Helper				Brett				Gel.			
Bulktrk p.u. No.				Driver				Rick				Calcium			
JOB SERVICES & REMARKS								Hulls							
Remarks: Cement did Circulate								Salt							
Rat Hole								Flowseal							
Mouse Hole								Kol-Seal							
Centralizers								Mud CLR 48							
Baskets								CFL-117 or CD110 CAF 38							
D/V or Port Collar								Sand							
								Handling							
								Mileage							
								FLOAT EQUIPMENT							
				Guide Shoe				Rubber plug							
				Centralizer											
				Baskets											
				AFU Inserts											
				Float Shoe											
				Latch Down											
								Pumptrk Charge							
								Mileage							
												Tax			
												Discount			
X Signature								Jay [Signature]				Total Charge			

QUALITY OILWELL CEMENTING, INC.

Federal Tax I.D.# 20-2886107

Phone 785-483-2025
Cell 785-324-1041

Home Office P.O. Box 32 Russell, KS 67665

No. 1263

Date	5-1-15	Sec.	29	Twp.	21	Range	12	County	STEFFORD	State	KANSAS	On Location	Finish	2:45 AM
Location														

Lease	MILTON	Well No.	1	Owner	To Quality Oilwell Cementing, Inc. You are hereby requested to rent cementing equipment and furnish cementer and helper to assist owner or contractor to do work as listed.
Contractor	SOUTH WIND	DRILL. Rig #	3	Charge To	MAI OIL OPERATIONS INC
Type Job	PRODUCTION	STAIN		Street	5-1-15
Hole Size		T.D.	3700	City	MAI OIL
Csg.	5 1/2 USED	Depth	3700	State	KS
Tbg. Size	14 #	Depth		The above was done to satisfaction and supervision of owner agent or contractor.	
Tool	LATCH DN. BAFFLE	Depth	3672	Cement Amount Ordered	160 sx 40 10% SALT
Cement Left in Csg.	28.55	Shoe Joint	28.55		2% GEL 1/4# F10-Seq L
Meas Line		Displace	89.69		

EQUIPMENT

Pumptrk	20	No.	Cementer	1145	GLYNN G.	Common	Poz. Mix	
			Helper					
Bulktrk		No.	Driver		NICK WILSON		Gel.	3847.01
			Driver				Calcium	1/2 + cement
Bulktrk	3	No.	Driver		CHAD M.		Hulls	
			Driver				Salt	3325 3700 3700 10 1/4

JOB SERVICES & REMARKS

Remarks:	Salt
Rat Hole	30 sx 7 1/4 J-2
Mouse Hole	
Centralizers	1-13-14, 15
Baskets	
D/V or Port Collar	
RAN 88 USED JOINTS OF 14# CSG SET @ 3700', REVIEWED CIRCULATION DROP AFU BALL, CIRCULATE 45 MIN. PUMP 1,000 GAL, MUD-CLR-48, 30 SX @ RATHOLE, PUMP 130 SX DOWN-HOLE, CLEAR-KIT, RELEASE LATCH-DOWN PLUG + DISPLACED A TOTAL OF 89 3/4 BBL 112# OF 100# LANT LATCH DOWN PLUG @ 1500' RELEASE PRESSURE + AFU-PLUG HAD 70# (HELP) LIFT PRESSURE.	
	FLOAT EQUIPMENT
	Guide Shoe
	Centralizer TURBO X 1.5
	Baskets
	AFU Inserts
	Float Shoe X 1
	Latch Down X 1
	Pumptrk Charge
	Mileage

	Tax	
	Discount	
X Signature <i>[Signature]</i>	Total Charge	