



DRILL STEM TEST REPORT

Prepared For: **CMX Inc.**

1700 N. Waterfront Pkwy.
BLDG. 300B
Wichita KS 67206

ATTN: Ken Leblanc

Bushton #1-36

36-17s-10w Ellsworth,KS

Start Date: 2015.05.07 @ 10:05:00

End Date: 2015.05.07 @ 17:05:30

Job Ticket #: 62885 DST #: 1

Trilobite Testing, Inc
1515 Commerce Parkway Hays, KS 67601
ph: 785-625-4778 fax: 785-625-5620

Printed: 2015.05.12 @ 16:16:45



TRILOBITE TESTING, INC

DRILL STEM TEST REPORT

CMX Inc.
1700 N. Waterfront Pkw y.
BLDG. 300B
Wichita KS 67206
ATTN: Ken Leblanc

36-17s-10w Ellsworth,KS

Bushton #1-36

Job Ticket: 62885 **DST#: 1**

Test Start: 2015.05.07 @ 10:05:00

GENERAL INFORMATION:

Formation: **Severy Sand**
 Deviated: No Whipstock: ft (KB)
 Time Tool Opened: 12:04:30
 Time Test Ended: 17:05:30
 Interval: **2463.00 ft (KB) To 2520.00 ft (KB) (TVD)**
 Total Depth: 2520.00 ft (KB) (TVD)
 Hole Diameter: 7.88 inches Hole Condition: Fair
 Test Type: Conventional Bottom Hole (Initial)
 Tester: Dustin Ellis
 Unit No: 59
 Reference Elevations: 1762.00 ft (KB)
 1749.00 ft (CF)
 KB to GR/CF: 13.00 ft

Serial #: 6839

Inside

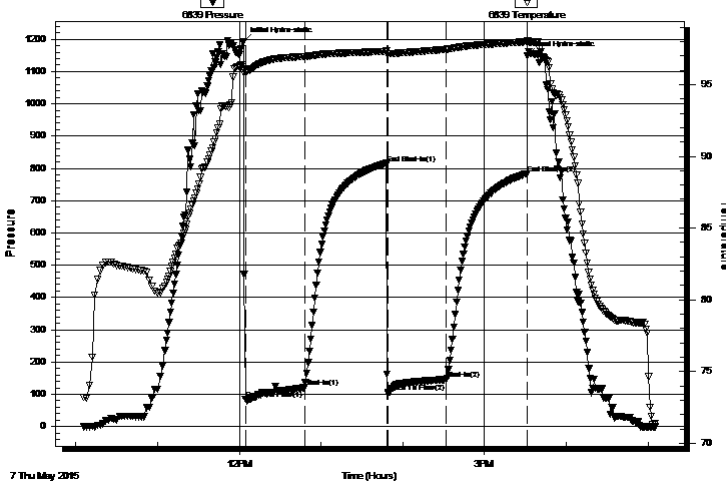
Press@RunDepth: 145.84 psig @ 2515.02 ft (KB) Capacity: 5000.00 psig
 Start Date: 2015.05.07 End Date: 2015.05.07 Last Calib.: 2015.05.07
 Start Time: 10:06:00 End Time: 17:05:30 Time On Btm: 2015.05.07 @ 12:03:00
 Time Off Btm: 2015.05.07 @ 15:31:30

TEST COMMENT: IFP 45 min BOB in 3 min.
 ISI 60 min No blow back
 FFP 45 min BOB in 4 min.
 FSI 60 min No blow back

PRESSURE SUMMARY

Time (Min.)	Pressure (psig)	Temp (deg F)	Annotation
0	1192.99	96.14	Initial Hydro-static
2	84.58	95.83	Open To Flow (1)
45	121.06	96.95	Shut-In(1)
105	815.65	97.33	End Shut-In(1)
106	105.87	97.18	Open To Flow (2)
149	145.84	97.46	Shut-In(2)
208	783.90	97.99	End Shut-In(2)
209	1150.34	98.08	Final Hydro-static

Pressure vs. Time



Recovery

Length (ft)	Description	Volume (bbl)
170.00	Mud 100%	0.84
60.00	Muddy water 50% Water 50% Mud	0.72

Gas Rates

	Choke (inches)	Pressure (psig)	Gas Rate (Mcf/d)



DRILL STEM TEST REPORT

CMX Inc.
 1700 N. Waterfront Pkwy.
 BLDG. 300B
 Wichita KS 67206
 ATTN: Ken Leblanc

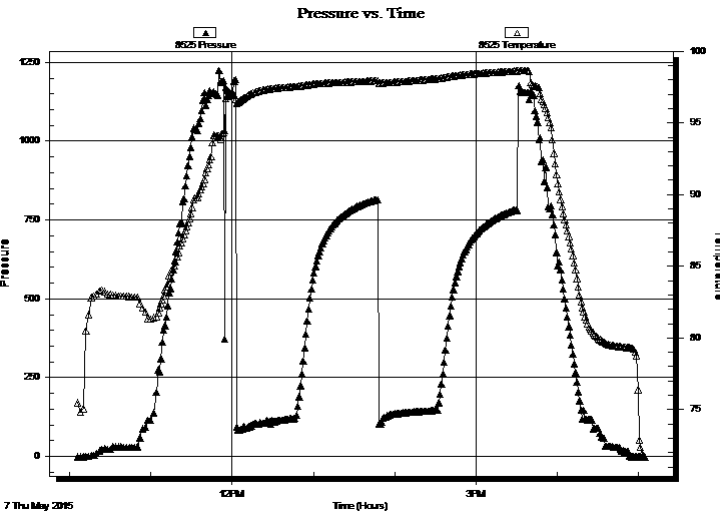
36-17s-10w Ellsworth,KS
Bushton #1-36
 Job Ticket: 62885 **DST#: 1**
 Test Start: 2015.05.07 @ 10:05:00

GENERAL INFORMATION:

Formation: **Severy Sand**
 Deviated: No Whipstock: ft (KB)
 Time Tool Opened: 12:04:30
 Time Test Ended: 17:05:30
Interval: 2463.00 ft (KB) To 2520.00 ft (KB) (TVD)
 Total Depth: 2520.00 ft (KB) (TVD)
 Hole Diameter: 7.88 inches Hole Condition: Fair
 Test Type: Conventional Bottom Hole (Initial)
 Tester: Dustin Ellis
 Unit No: 59
 Reference Elevations: 1762.00 ft (KB)
 1749.00 ft (CF)
 KB to GR/CF: 13.00 ft

Serial #: 8525 Outside
 Press@RunDepth: psig @ 2515.02 ft (KB) Capacity: 5000.00 psig
 Start Date: 2015.05.07 End Date: 2015.05.07 Last Calib.: 2015.05.07
 Start Time: 10:06:00 End Time: 17:04:30 Time On Btm:
 Time Off Btm:

TEST COMMENT: IFP 45 min BOB in 3 min.
 ISI 60 min No blow back
 FFP 45 min BOB in 4 min.
 FSI 60 min No blow back



PRESSURE SUMMARY

Time (Min.)	Pressure (psig)	Temp (deg F)	Annotation

Recovery

Length (ft)	Description	Volume (bbl)
170.00	Mud 100%	0.84
60.00	Muddy w ater 50% Water 50% Mud	0.72

Gas Rates

Choke (inches)	Pressure (psig)	Gas Rate (Mcf/d)



**TRILOBITE
TESTING, INC**

DRILL STEM TEST REPORT

TOOL DIAGRAM

CMX Inc.
1700 N. Waterfront Pkwy.
BLDG. 300B
Wichita KS 67206
ATTN: Ken Leblanc

36-17s-10w Ellsworth,KS
Bushton #1-36
Job Ticket: 62885 **DST#: 1**
Test Start: 2015.05.07 @ 10:05:00

Tool Information

Drill Pipe:	Length: 2288.00 ft	Diameter: 3.80 inches	Volume: 32.09 bbl	Tool Weight: 2000.00 lb
Heavy Wt. Pipe:	Length: 0.00 ft	Diameter: 0.00 inches	Volume: 0.00 bbl	Weight set on Packer: 20000.00 lb
Drill Collar:	Length: 183.23 ft	Diameter: 2.25 inches	Volume: 0.90 bbl	Weight to Pull Loose: 56000.00 lb
			<u>Total Volume: 32.99 bbl</u>	Tool Chased 5.00 ft
Drill Pipe Above KB:	30.23 ft			String Weight: Initial 48000.00 lb
Depth to Top Packer:	2463.00 ft			Final 48000.00 lb
Depth to Bottom Packer:	ft			
Interval between Packers:	57.02 ft			
Tool Length:	79.02 ft			
Number of Packers:	2	Diameter: 6.75 inches		

Tool Comments:

Tool Description	Length (ft)	Serial No.	Position	Depth (ft)	Accum. Lengths
-------------------------	--------------------	-------------------	-----------------	-------------------	-----------------------

Shut In Tool	5.00			2446.00	
Hydraulic tool	5.00			2451.00	
Safety Joint	2.00			2453.00	
Top Packer	5.00			2458.00	
Packer	5.00			2463.00	22.00 Bottom Of Top Packer
Anchor	5.00			2468.00	
Change Over Sub	0.75			2468.75	
Drill Pipe	30.52			2499.27	
Change Over Sub	0.75			2500.02	
Anchor	15.00			2515.02	
Recorder	0.00	6839	Inside	2515.02	
Recorder	0.00	8525	Outside	2515.02	
Bullnose	5.00			2520.02	57.02 Anchor Tool

Total Tool Length: 79.02



**TRILOBITE
TESTING, INC**

DRILL STEM TEST REPORT

FLUID SUMMARY

CMX Inc.
1700 N. Waterfront Pkw y.
BLDG. 300B
Wichita KS 67206
ATTN: Ken Leblanc

36-17s-10w Ellsworth,KS
Bushton #1-36
Job Ticket: 62885 **DST#: 1**
Test Start: 2015.05.07 @ 10:05:00

Mud and Cushion Information

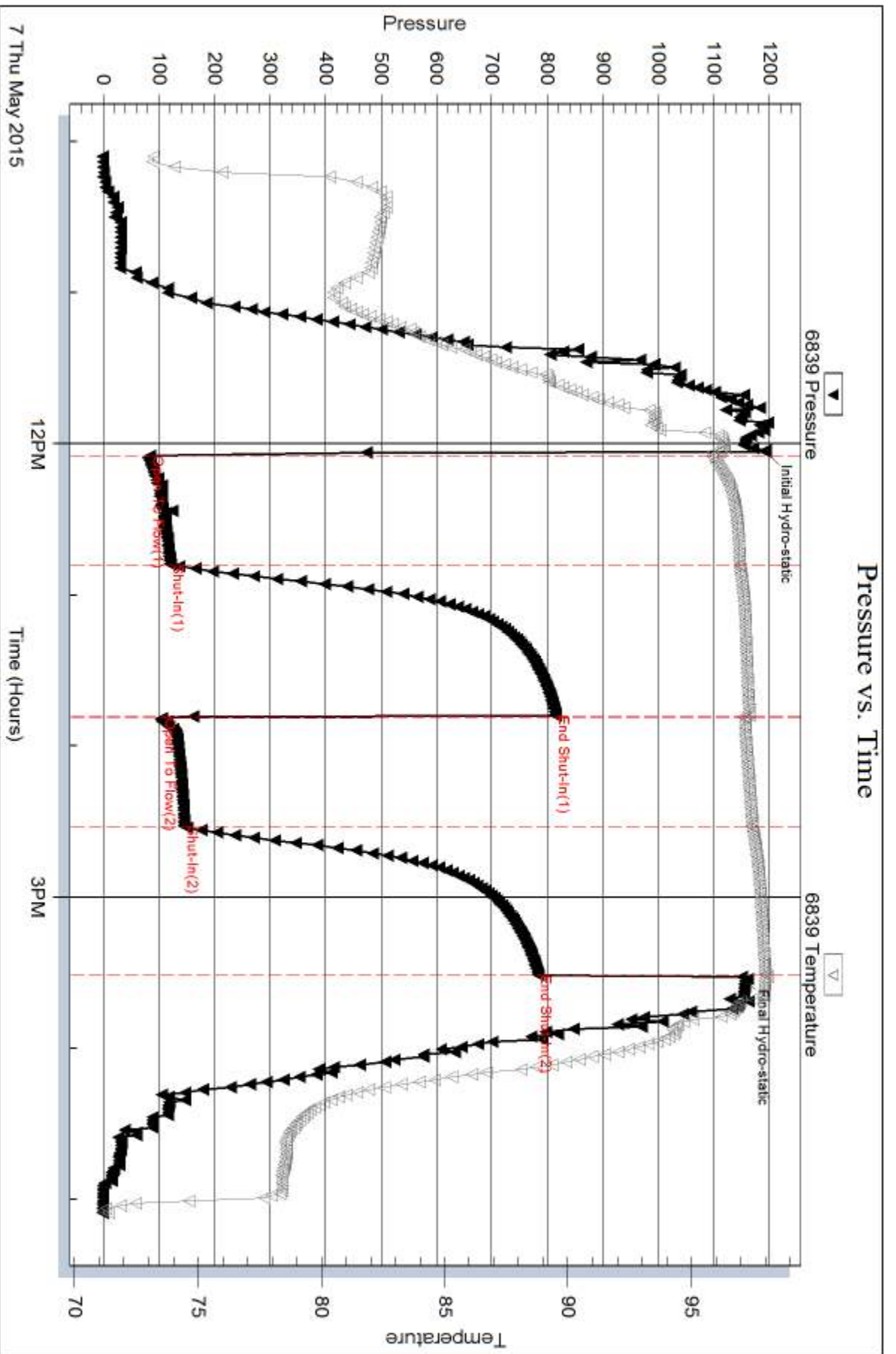
Mud Type: Gel Chem	Cushion Type:	Oil API:	deg API
Mud Weight: 9.00 lb/gal	Cushion Length: ft	Water Salinity:	73000 ppm
Viscosity: 50.00 sec/qt	Cushion Volume: bbl		
Water Loss: 10.94 in ³	Gas Cushion Type:		
Resistivity: ohm.m	Gas Cushion Pressure: psig		
Salinity: 70000.00 ppm			
Filter Cake: 0.00 inches			

Recovery Information

Recovery Table

Length ft	Description	Volume bbl
170.00	Mud 100%	0.836
60.00	Muddy w ater 50% Water 50% Mud	0.721

Total Length: 230.00 ft Total Volume: 1.557 bbl
 Num Fluid Samples: 0 Num Gas Bombs: 0 Serial #:
 Laboratory Name: Laboratory Location:
 Recovery Comments: Chlorides 79,000 .5ohms @56 degrees

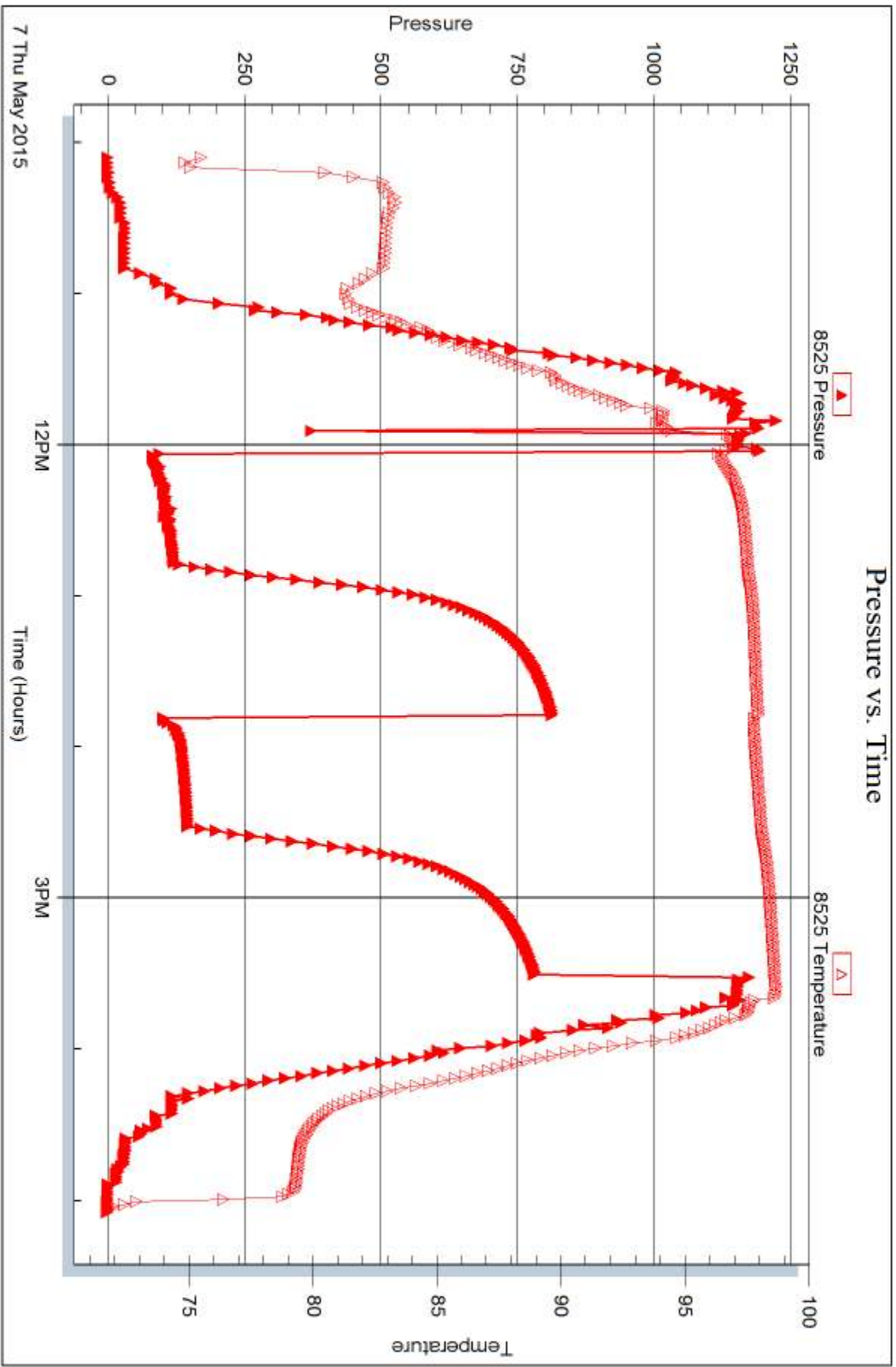


Serial #: 8525

Outside CMX Inc.

Bushlon #1-36

DST Test Number: 1



Triobite Testing, Inc

Ref. No: 62885

Printed: 2015.05.12 @ 16:16:47



DRILL STEM TEST REPORT

Prepared For: **CMX Inc.**

1700 N. Waterfront Pkwy.
BLDG. 300B
Wichita KS 67206

ATTN: Ken Leblanc

Bushton #1-36

36-17s-10w Ellsworth,KS

Start Date: 2015.05.08 @ 12:43:00

End Date: 2015.05.08 @ 18:16:00

Job Ticket #: 62886 DST #: 2

Trilobite Testing, Inc
1515 Commerce Parkway Hays, KS 67601
ph: 785-625-4778 fax: 785-625-5620

Printed: 2015.05.12 @ 16:16:18



**TRILOBITE
TESTING, INC**

DRILL STEM TEST REPORT

CMX Inc.
1700 N. Waterfront Pkwy.
BLDG. 300B
Wichita KS 67206
ATTN: Ken Leblanc

36-17s-10w Ellsworth,KS

Bushton #1-36

Job Ticket: 62886

DST#: 2

Test Start: 2015.05.08 @ 12:43:00

GENERAL INFORMATION:

Formation: **LKC B**
 Deviated: No Whipstock: ft (KB)
 Time Tool Opened: 13:56:30
 Time Test Ended: 18:16:00
 Interval: **2910.00 ft (KB) To 2930.00 ft (KB) (TVD)**
 Total Depth: 2930.00 ft (KB) (TVD)
 Hole Diameter: 7.88 inches Hole Condition: Fair
 Test Type: Conventional Bottom Hole (Initial)
 Tester: Dustin Ellis
 Unit No: 59
 Reference Elevations: 1762.00 ft (KB)
 1749.00 ft (CF)
 KB to GR/CF: 13.00 ft

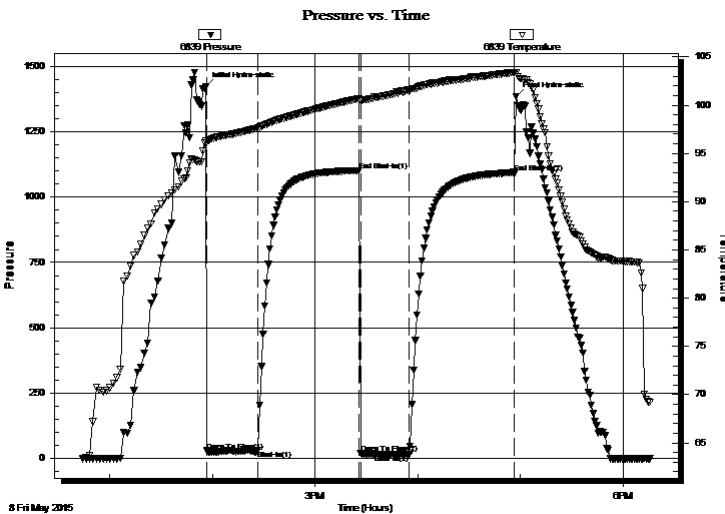
Serial #: 6839

Inside

Press@RunDepth: 17.80 psig @ 2925.00 ft (KB) Capacity: 5000.00 psig
 Start Date: 2015.05.08 End Date: 2015.05.08 Last Calib.: 2015.05.08
 Start Time: 12:44:00 End Time: 18:16:00 Time On Btm: 2015.05.08 @ 13:56:00
 Time Off Btm: 2015.05.08 @ 16:57:30

TEST COMMENT: IFP 30 min. BOB in 10 sec.
 ISI 60 min. Yes blow back
 FFP 30 min. BOB instantly.
 FSI 60 min. Yes blow back.

PRESSURE SUMMARY



Time (Min.)	Pressure (psig)	Temp (deg F)	Annotation
0	1421.26	96.26	Initial Hydro-static
1	29.83	96.11	Open To Flow (1)
31	31.16	97.66	Shut-In(1)
90	1101.96	100.69	End Shut-In(1)
91	20.72	100.51	Open To Flow (2)
119	17.80	101.60	Shut-In(2)
180	1094.40	103.40	End Shut-In(2)
182	1385.36	103.34	Final Hydro-static

Recovery

Length (ft)	Description	Volume (bbl)
0.00	Gas to surface in 20 min. 1st Flow .	0.00
3.00	Mud 100%	0.01

Gas Rates

	Choke (inches)	Pressure (psig)	Gas Rate (Mcf/d)
First Gas Rate	0.38	-11.00	12.46
Last Gas Rate	0.50	-10.00	29.68
Max. Gas Rate	0.50	-10.00	29.68



**TRILOBITE
TESTING, INC**

DRILL STEM TEST REPORT

CMX Inc.
1700 N. Waterfront Pkwy.
BLDG. 300B
Wichita KS 67206
ATTN: Ken Leblanc

36-17s-10w Ellsworth,KS

Bushton #1-36

Job Ticket: 62886 **DST#: 2**
Test Start: 2015.05.08 @ 12:43:00

GENERAL INFORMATION:

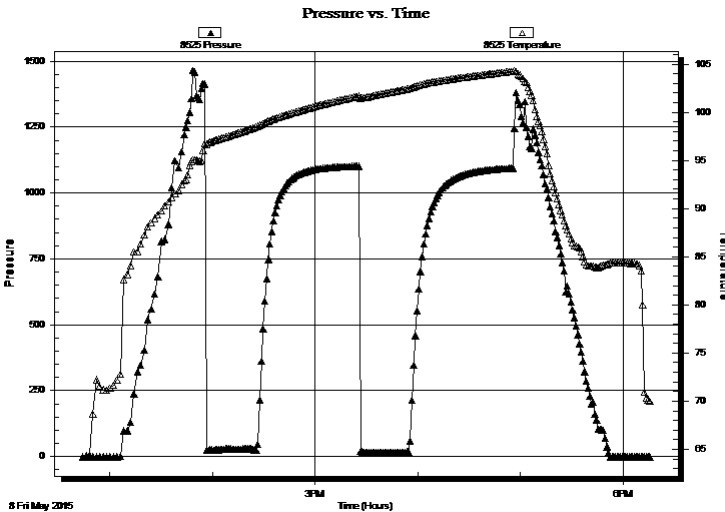
Formation:	LKC B		
Deviated:	No Whipstock:	ft (KB)	Test Type: Conventional Bottom Hole (Initial)
Time Tool Opened:	13:56:30		Tester: Dustin Ellis
Time Test Ended:	18:16:00		Unit No: 59
Interval:	2910.00 ft (KB) To 2930.00 ft (KB) (TVD)		Reference Elevations: 1762.00 ft (KB)
Total Depth:	2930.00 ft (KB) (TVD)		1749.00 ft (CF)
Hole Diameter:	7.88 inches	Hole Condition: Fair	KB to GR/CF: 13.00 ft

Serial #: 8525 Outside

Press@RunDepth:	psig @ 2925.00 ft (KB)	Capacity:	5000.00 psig
Start Date:	2015.05.08	End Date:	2015.05.08
Start Time:	12:44:00	End Time:	18:15:30
		Last Calib.:	2015.05.08
		Time On Btm:	
		Time Off Btm:	

TEST COMMENT: IFP 30 min. BOB in 10 sec.
ISI 60 min. Yes blow back
FFP 30 min. BOB instantly.
FSI 60 min. Yes blow back.

PRESSURE SUMMARY



Time (Min.)	Pressure (psig)	Temp (deg F)	Annotation

Recovery

Length (ft)	Description	Volume (bbl)
0.00	Gas to surface in 20 min. 1st Flow .	0.00
3.00	Mud 100%	0.01

Gas Rates

	Choke (inches)	Pressure (psig)	Gas Rate (Mcf/d)
First Gas Rate	0.38	-11.00	12.46
Last Gas Rate	0.50	-10.00	29.68
Max. Gas Rate	0.50	-10.00	29.68



**TRILOBITE
TESTING, INC**

DRILL STEM TEST REPORT

TOOL DIAGRAM

CMX Inc.
1700 N. Waterfront Pkwy.
BLDG. 300B
Wichita KS 67206
ATTN: Ken Leblanc

36-17s-10w Ellsworth,KS
Bushton #1-36
Job Ticket: 62886 **DST#: 2**
Test Start: 2015.05.08 @ 12:43:00

Tool Information

Drill Pipe:	Length: 2733.00 ft	Diameter: 3.80 inches	Volume: 38.34 bbl	Tool Weight: 2000.00 lb
Heavy Wt. Pipe:	Length: 0.00 ft	Diameter: 0.00 inches	Volume: 0.00 bbl	Weight set on Packer: 20000.00 lb
Drill Collar:	Length: 183.23 ft	Diameter: 2.25 inches	Volume: 0.90 bbl	Weight to Pull Loose: 58000.00 lb
			<u>Total Volume: 39.24 bbl</u>	Tool Chased 0.00 ft
Drill Pipe Above KB:	28.23 ft			String Weight: Initial 51000.00 lb
Depth to Top Packer:	2910.00 ft			Final 51000.00 lb
Depth to Bottom Packer:	ft			
Interval between Packers:	20.00 ft			
Tool Length:	42.00 ft			
Number of Packers:	2	Diameter: 6.75 inches		

Tool Comments:

Tool Description	Length (ft)	Serial No.	Position	Depth (ft)	Accum. Lengths
------------------	-------------	------------	----------	------------	----------------

Shut In Tool	5.00			2893.00	
Hydraulic tool	5.00			2898.00	
Safety Joint	2.00			2900.00	
Top Packer	5.00			2905.00	
Packer	5.00			2910.00	22.00 Bottom Of Top Packer
Anchor	15.00			2925.00	
Recorder	0.00	6839	Inside	2925.00	
Recorder	0.00	8525	Outside	2925.00	
Bullnose	5.00			2930.00	20.00 Anchor Tool
Total Tool Length:	42.00				



**TRILOBITE
TESTING, INC**

DRILL STEM TEST REPORT

FLUID SUMMARY

CMX Inc.

36-17s-10w Ellsworth,KS

1700 N. Waterfront Pkw y.
BLDG. 300B
Wichita KS 67206
ATTN: Ken Leblanc

Bushton #1-36

Job Ticket: 62886

DST#: 2

Test Start: 2015.05.08 @ 12:43:00

Mud and Cushion Information

Mud Type: Gel Chem
Mud Weight: 9.00 lb/gal
Viscosity: 62.00 sec/qt
Water Loss: 11.16 in³
Resistivity: ohm.m
Salinity: 3500.00 ppm
Filter Cake: 0.00 inches

Cushion Type:
Cushion Length: ft
Cushion Volume: bbl
Gas Cushion Type:
Gas Cushion Pressure: psig

Oil API: deg API
Water Salinity: ppm

Recovery Information

Recovery Table

Length ft	Description	Volume bbl
0.00	Gas to surface in 20 min. 1st Flow .	0.000
3.00	Mud 100%	0.015

Total Length: 3.00 ft Total Volume: 0.015 bbl

Num Fluid Samples: 0

Num Gas Bombs: 0

Serial #:

Laboratory Name:

Laboratory Location:

Recovery Comments:



**TRILOBITE
TESTING, INC.**

DRILL STEM TEST REPORT

GAS RATES

CMX Inc.

36-17s-10w Ellsworth,KS

1700 N. Waterfront Pkw y.
BLDG. 300B
Wichita KS 67206
ATTN: Ken Leblanc

Bushton #1-36

Job Ticket: 62886

DST#: 2

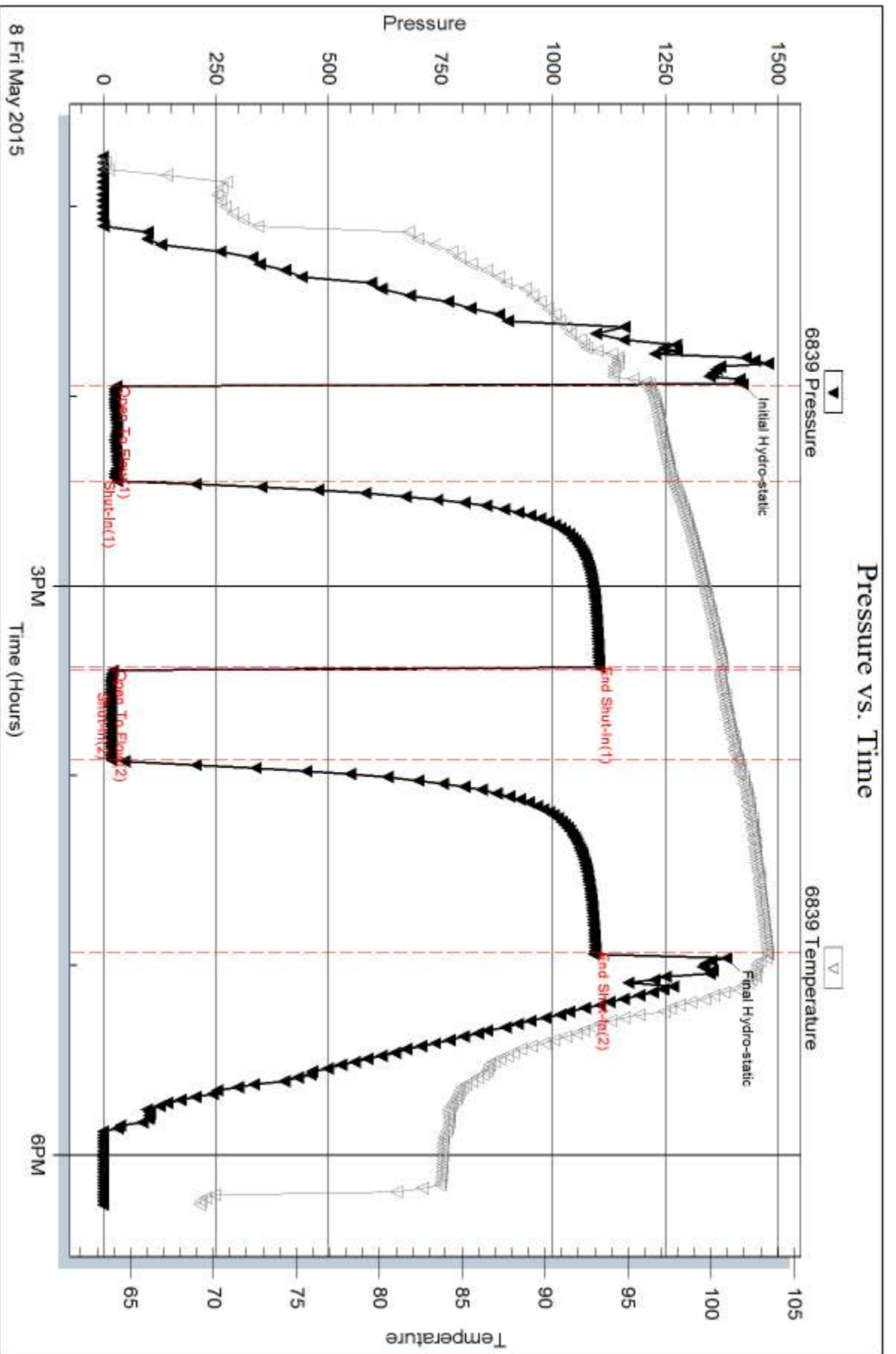
Test Start: 2015.05.08 @ 12:43:00

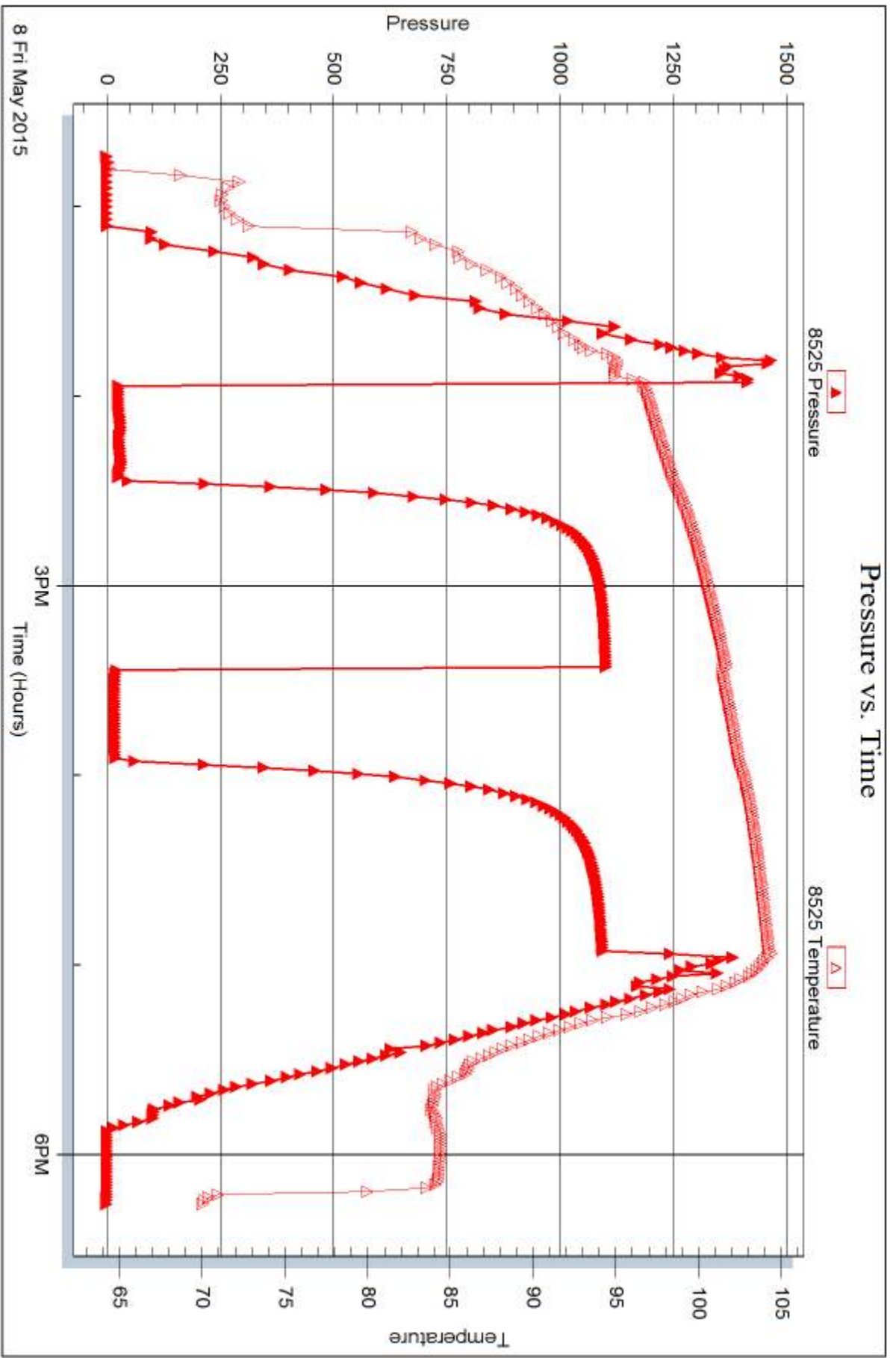
Gas Rates Information

Temperature: 59 (deg F)
Relative Density: 0.65
Z Factor: 0.8

Gas Rates Table

Flow Period	Elapsed Time	Choke (inches)	Pressure (psig)	Gas Rate (Mcf/d)
1	25	0.38	-11.00	12.46
1	25	0.38	-11.00	12.46
2	10	0.50	-10.00	29.68
2	20	0.50	-10.00	29.68







DRILL STEM TEST REPORT

Prepared For: **CMX Inc.**

1700 N. Waterfront Pkwy.
BLDG. 300B
Wichita KS 67206

ATTN: Ken Leblanc

Bushton #1-36

36-17s-10w Ellsworth,KS

Start Date: 2015.05.09 @ 01:55:00

End Date: 2015.05.09 @ 09:16:30

Job Ticket #: 62887 DST #: 3

Trilobite Testing, Inc
1515 Commerce Parkway Hays, KS 67601
ph: 785-625-4778 fax: 785-625-5620

Printed: 2015.05.12 @ 16:15:43

CMX Inc.
36-17s-10w Ellsworth,KS
Bushton #1-36
DST # 3
LKC G
2015.05.09



**TRILOBITE
TESTING, INC.**

DRILL STEM TEST REPORT

CMX Inc.
1700 N. Waterfront Pkw y.
BLDG. 300B
Wichita KS 67206
ATTN: Ken Leblanc

36-17s-10w Ellsworth,KS

Bushton #1-36

Job Ticket: 62887

DST#: 3

Test Start: 2015.05.09 @ 01:55:00

GENERAL INFORMATION:

Formation: **LKC G**
 Deviated: No Whipstock: ft (KB)
 Time Tool Opened: 03:10:30
 Time Test Ended: 09:16:30
 Interval: **2975.00 ft (KB) To 2985.00 ft (KB) (TVD)**
 Total Depth: 2985.00 ft (KB) (TVD)
 Hole Diameter: 7.88 inches Hole Condition: Fair
 Test Type: Conventional Bottom Hole (Initial)
 Tester: Dustin Ellis
 Unit No: 59
 Reference Elevations: 1762.00 ft (KB)
 1749.00 ft (CF)
 KB to GR/CF: 13.00 ft

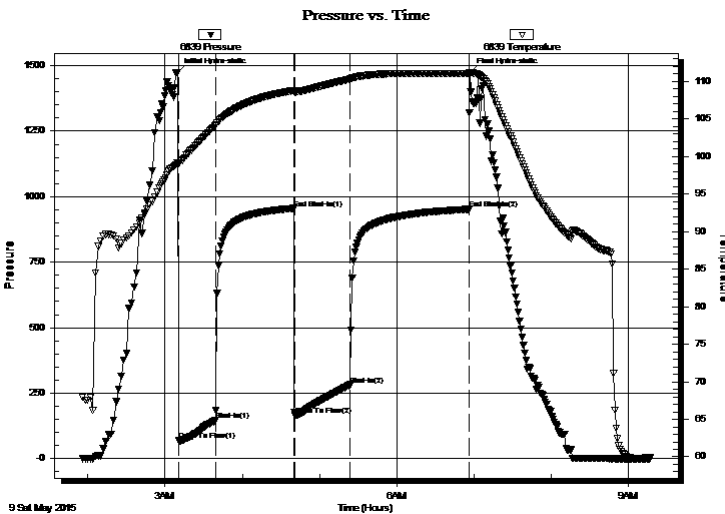
Serial #: 6839

Outside

Press@RunDepth: 281.91 psig @ 2980.00 ft (KB) Capacity: 5000.00 psig
 Start Date: 2015.05.09 End Date: 2015.05.09 Last Calib.: 2015.05.09
 Start Time: 01:56:00 End Time: 09:16:30 Time On Btm: 2015.05.09 @ 03:09:30
 Time Off Btm: 2015.05.09 @ 06:57:00

TEST COMMENT: IFP 30 min. BOB in 10 sec.
 ISI 60 min. Yes blow blow back
 FFP 45 min. BOB in 45 sec.
 FSI 90 min. Yes blow back

PRESSURE SUMMARY



Time (Min.)	Pressure (psig)	Temp (deg F)	Annotation
0	1472.97	99.17	Initial Hydro-static
1	69.23	99.05	Open To Flow (1)
30	146.35	104.12	Shut-In(1)
91	953.09	108.77	End Shut-In(1)
92	165.06	108.60	Open To Flow (2)
135	281.91	110.29	Shut-In(2)
227	952.03	111.06	End Shut-In(2)
228	1474.33	111.20	Final Hydro-static

Recovery

Length (ft)	Description	Volume (bbl)
252.00	Mudd w ater 50% w ater 50% mud	1.87
418.00	Water 100%	5.86

Gas Rates

	Choke (inches)	Pressure (psig)	Gas Rate (Mcf/d)
First Gas Rate	0.75	-10.12	66.85
Last Gas Rate	0.75	-10.55	60.14
Max. Gas Rate	0.75	-10.12	66.85



DRILL STEM TEST REPORT

CMX Inc.

36-17s-10w Ellsworth, KS

1700 N. Waterfront Pkw y.
BLDG. 300B
Wichita KS 67206
ATTN: Ken Leblanc

Bushton #1-36

Job Ticket: 62887

DST#: 3

Test Start: 2015.05.09 @ 01:55:00

GENERAL INFORMATION:

Formation: **LKC G**

Deviated: No Whipstock: ft (KB)

Test Type: Conventional Bottom Hole (Initial)

Time Tool Opened: 03:10:30

Tester: Dustin Ellis

Time Test Ended: 09:16:30

Unit No: 59

Interval: 2975.00 ft (KB) To 2985.00 ft (KB) (TVD)

Reference Elevations: 1762.00 ft (KB)

Total Depth: 2985.00 ft (KB) (TVD)

1749.00 ft (CF)

Hole Diameter: 7.88 inches Hole Condition: Fair

KB to GR/CF: 13.00 ft

Serial #: 8525

Inside

Press@RunDepth: psig @ 2980.00 ft (KB)

Capacity: 5000.00 psig

Start Date: 2015.05.09

End Date:

2015.05.09

Last Calib.:

2015.05.09

Start Time: 01:56:00

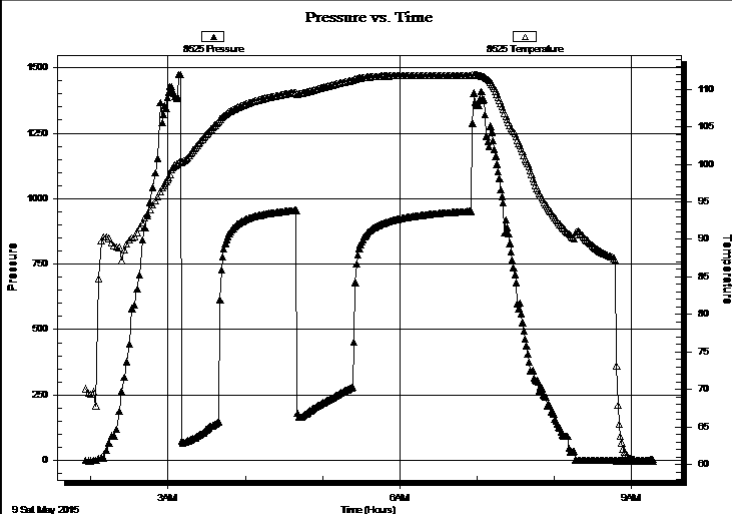
End Time:

09:16:30

Time On Btm:

Time Off Btm:

TEST COMMENT: IFP 30 min. BOB in 10 sec.
ISI 60 min. Yes blow blow back
FFP 45 min. BOB in 45 sec.
FSI 90 min. Yes blow back



PRESSURE SUMMARY

Time (Min.)	Pressure (psig)	Temp (deg F)	Annotation

Recovery

Length (ft)	Description	Volume (bbl)
252.00	Mudd w ater 50% w ater 50% mud	1.87
418.00	Water 100%	5.86

Gas Rates

	Choke (inches)	Pressure (psig)	Gas Rate (Mcf/d)
First Gas Rate	0.75	-10.12	66.85
Last Gas Rate	0.75	-10.55	60.14
Max. Gas Rate	0.75	-10.12	66.85



**TRILOBITE
TESTING, INC**

DRILL STEM TEST REPORT

TOOL DIAGRAM

CMX Inc.
1700 N. Waterfront Pkwy.
BLDG. 300B
Wichita KS 67206
ATTN: Ken Leblanc

36-17s-10w Ellsworth,KS
Bushton #1-36
Job Ticket: 62887 **DST#: 3**
Test Start: 2015.05.09 @ 01:55:00

Tool Information

Drill Pipe:	Length: 2790.00 ft	Diameter: 3.80 inches	Volume: 39.14 bbl	Tool Weight: 2000.00 lb
Heavy Wt. Pipe:	Length: 0.00 ft	Diameter: 0.00 inches	Volume: 0.00 bbl	Weight set on Packer: 20000.00 lb
Drill Collar:	Length: 183.23 ft	Diameter: 2.25 inches	Volume: 0.90 bbl	Weight to Pull Loose: 58000.00 lb
			<u>Total Volume: 40.04 bbl</u>	Tool Chased 52000.00 ft
Drill Pipe Above KB:	20.23 ft			String Weight: Initial 53000.00 lb
Depth to Top Packer:	2975.00 ft			Final 0.00 lb
Depth to Bottom Packer:	ft			
Interval between Packers:	10.00 ft			
Tool Length:	32.00 ft			
Number of Packers:	2	Diameter: 6.75 inches		

Tool Comments:

Tool Description	Length (ft)	Serial No.	Position	Depth (ft)	Accum. Lengths
-------------------------	--------------------	-------------------	-----------------	-------------------	-----------------------

Shut In Tool	5.00			2958.00	
Hydraulic tool	5.00			2963.00	
Safety Joint	2.00			2965.00	
Top Packer	5.00			2970.00	
Packer	5.00			2975.00	22.00 Bottom Of Top Packer
Anchor	5.00			2980.00	
Recorder	0.00	8525	Inside	2980.00	
Recorder	0.00	6839	Outside	2980.00	
Bullnose	5.00			2985.00	10.00 Anchor Tool
Total Tool Length:	32.00				



**TRILOBITE
TESTING, INC**

DRILL STEM TEST REPORT

FLUID SUMMARY

CMX Inc.
1700 N. Waterfront Pkwy.
BLDG. 300B
Wichita KS 67206
ATTN: Ken Leblanc

36-17s-10w Ellsworth,KS
Bushton #1-36
Job Ticket: 62887 **DST#: 3**
Test Start: 2015.05.09 @ 01:55:00

Mud and Cushion Information

Mud Type: Gel Chem	Cushion Type:	Oil API:	deg API
Mud Weight: 9.00 lb/gal	Cushion Length: ft	Water Salinity:	78000 ppm
Viscosity: 62.00 sec/qt	Cushion Volume: bbl		
Water Loss: 11.45 in ³	Gas Cushion Type:		
Resistivity: ohm.m	Gas Cushion Pressure: psig		
Salinity: 3500.00 ppm			
Filter Cake: 0.00 inches			

Recovery Information

Recovery Table

Length ft	Description	Volume bbl
252.00	Mudd w ater 50% w ater 50%mud	1.866
418.00	Water 100%	5.863

Total Length: 670.00 ft Total Volume: 7.729 bbl
 Num Fluid Samples: 0 Num Gas Bombs: 0 Serial #:
 Laboratory Name: Laboratory Location:
 Recovery Comments: Chlorides 78,000 .4ohms@92degrees
 Gas to surface in 5 min 1st open



**TRILOBITE
TESTING, INC.**

DRILL STEM TEST REPORT

GAS RATES

CMX Inc.

36-17s-10w Ellsworth,KS

1700 N. Waterfront Pkw y.
BLDG. 300B
Wichita KS 67206
ATTN: Ken Leblanc

Bushton #1-36

Job Ticket: 62887

DST#: 3

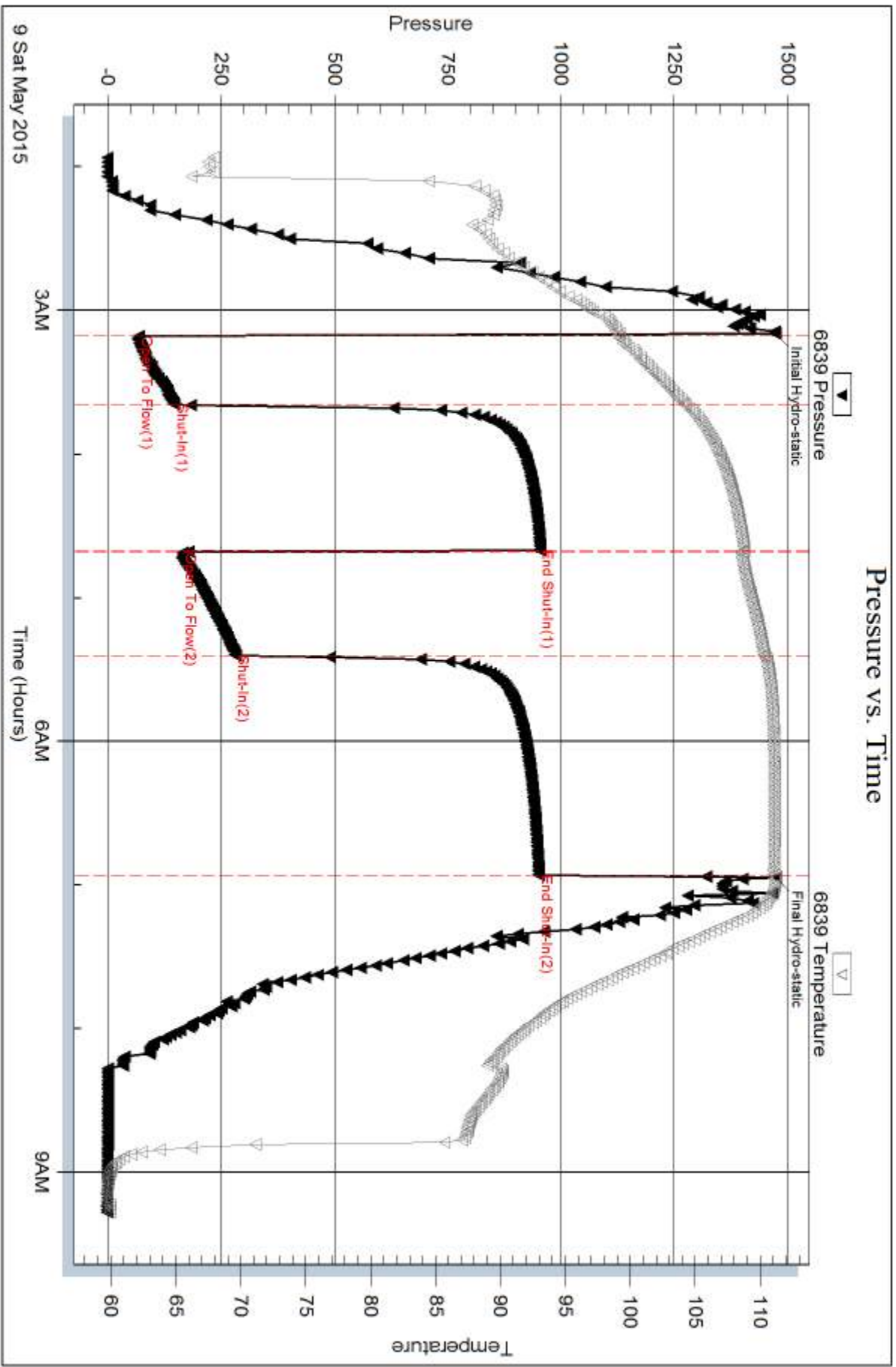
Test Start: 2015.05.09 @ 01:55:00

Gas Rates Information

Temperature: 59 (deg F)
Relative Density: 0.65
Z Factor: 0.8

Gas Rates Table

Flow Period	Elapsed Time	Choke (inches)	Pressure (psig)	Gas Rate (Mcf/d)
1	10	0.75	-10.12	66.85
1	10	0.75	-10.12	66.85
1	10	0.75	-10.12	66.85
1	20	0.75	-10.31	63.88
1	30	0.75	-10.55	60.14
2	10	0.75	-10.55	60.14
2	20	0.75	-10.55	60.14



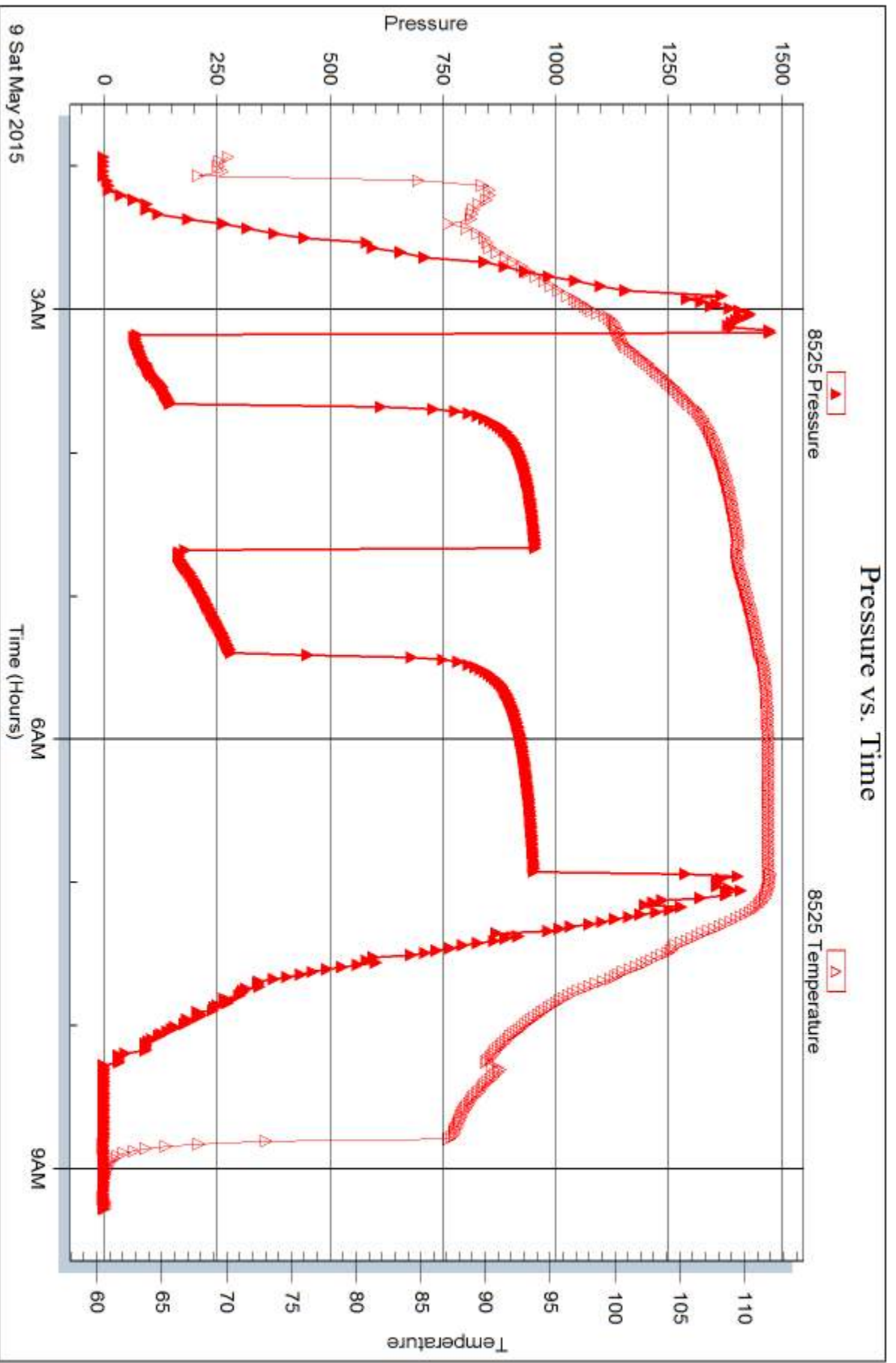
Serial #: 8525

Inside

CMX Inc.

Bushion #1-36

DST Test Number: 3



Trilobite Testing, Inc

Ref. No: 62887

Printed: 2015.05.12 @ 16:15:46



DRILL STEM TEST REPORT

Prepared For: **CMX Inc.**

1700 N. Waterfront Pkwy.
BLDG. 300B
Wichita KS 67206

ATTN: Ken Leblanc

Bushton #1-36

36-17s-10w Ellsworth,KS

Start Date: 2015.05.09 @ 06:05:00

End Date: 2015.05.09 @ 11:40:30

Job Ticket #: 62888 DST #: 4

Trilobite Testing, Inc
1515 Commerce Parkway Hays, KS 67601
ph: 785-625-4778 fax: 785-625-5620

Printed: 2015.05.12 @ 16:15:13

CMX Inc.
36-17s-10w Ellsworth,KS
Bushton #1-36
DST # 4
LKC J
2015.05.09



**TRILOBITE
TESTING, INC**

DRILL STEM TEST REPORT

CMX Inc.
1700 N. Waterfront Pkwy.
BLDG. 300B
Wichita KS 67206
ATTN: Ken Leblanc

36-17s-10w Ellsworth,KS

Bushton #1-36

Job Ticket: 62888

DST#: 4

Test Start: 2015.05.09 @ 06:05:00

GENERAL INFORMATION:

Formation: **LKC J**

Deviated: No Whipstock: ft (KB)

Time Tool Opened: 07:26:30

Time Test Ended: 11:40:30

Test Type: Conventional Bottom Hole (Real-Time)

Tester: Dustin Ellis

Unit No: 59

Interval: 3075.00 ft (KB) To 3100.00 ft (KB) (TVD)

Reference Elevations: 1762.00 ft (KB)

Total Depth: 3100.00 ft (KB) (TVD)

1749.00 ft (CF)

Hole Diameter: 7.88 inches Hole Condition: Fair

KB to GR/CF: 13.00 ft

Serial #: 6839 Outside

Press@RunDepth: 69.05 psig @ 3095.00 ft (KB)

Capacity: 5000.00 psig

Start Date: 2015.05.09

End Date:

2015.05.09

Last Calib.:

2015.05.09

Start Time: 06:06:00

End Time:

11:40:30

Time On Btm:

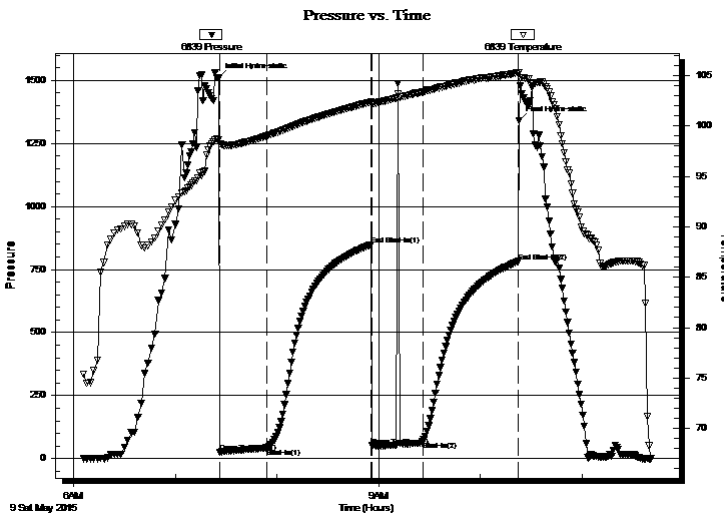
2015.05.09 @ 07:25:30

Time Off Btm:

2015.05.09 @ 10:23:00

TEST COMMENT: IFP 30 min Weak blow built to 3"
ISI 60 min No blow back
FFP 30 min Dead Flushed tool w weak blow.
FSI 60 min No blow back

PRESSURE SUMMARY



Time (Min.)	Pressure (psig)	Temp (deg F)	Annotation
0	1509.39	98.62	Initial Hydro-static
1	25.32	98.22	Open To Flow (1)
29	42.51	99.01	Shut-In(1)
90	847.88	102.37	End Shut-In(1)
91	50.74	102.20	Open To Flow (2)
121	69.05	103.35	Shut-In(2)
177	782.32	105.23	End Shut-In(2)
178	1341.78	105.28	Final Hydro-static

Recovery

Length (ft)	Description	Volume (bbl)
78.00	Very lightly oil spotted mud mud 100%	0.38

Gas Rates

Choke (inches)	Pressure (psig)	Gas Rate (Mcf/d)



**TRILOBITE
TESTING, INC**

DRILL STEM TEST REPORT

TOOL DIAGRAM

CMX Inc.
1700 N. Waterfront Pkwy.
BLDG. 300B
Wichita KS 67206
ATTN: Ken Leblanc

36-17s-10w Ellsworth,KS
Bushton #1-36
Job Ticket: 62888 **DST#: 4**
Test Start: 2015.05.09 @ 06:05:00

Tool Information

Drill Pipe:	Length: 2887.00 ft	Diameter: 3.80 inches	Volume: 40.50 bbl	Tool Weight: 2000.00 lb
Heavy Wt. Pipe:	Length: 0.00 ft	Diameter: 0.00 inches	Volume: 0.00 bbl	Weight set on Packer: 20000.00 lb
Drill Collar:	Length: 183.23 ft	Diameter: 2.25 inches	Volume: 0.90 bbl	Weight to Pull Loose: 56000.00 lb
		Total Volume: 41.40 bbl		Tool Chased 0.00 ft
Drill Pipe Above KB:	17.23 ft			String Weight: Initial 52000.00 lb
Depth to Top Packer:	3075.00 ft			Final 52000.00 lb
Depth to Bottom Packer:	ft			
Interval between Packers:	25.00 ft			
Tool Length:	47.00 ft			
Number of Packers:	2	Diameter: 6.75 inches		

Tool Comments:

Tool Description	Length (ft)	Serial No.	Position	Depth (ft)	Accum. Lengths
------------------	-------------	------------	----------	------------	----------------

Shut In Tool	5.00			3058.00	
Hydraulic tool	5.00			3063.00	
Safety Joint	2.00			3065.00	
Top Packer	5.00			3070.00	
Packer	5.00			3075.00	22.00 Bottom Of Top Packer
Anchor	20.00			3095.00	
Recorder	0.00	8525	Inside	3095.00	
Recorder	0.00	6839	Outside	3095.00	
Bullnose	5.00			3100.00	25.00 Anchor Tool
Total Tool Length:	47.00				



**TRILOBITE
TESTING, INC**

DRILL STEM TEST REPORT

FLUID SUMMARY

CMX Inc.
1700 N. Waterfront Pkw y.
BLDG. 300B
Wichita KS 67206
ATTN: Ken Leblanc

36-17s-10w Ellsworth,KS
Bushton #1-36
Job Ticket: 62888 **DST#: 4**
Test Start: 2015.05.09 @ 06:05:00

Mud and Cushion Information

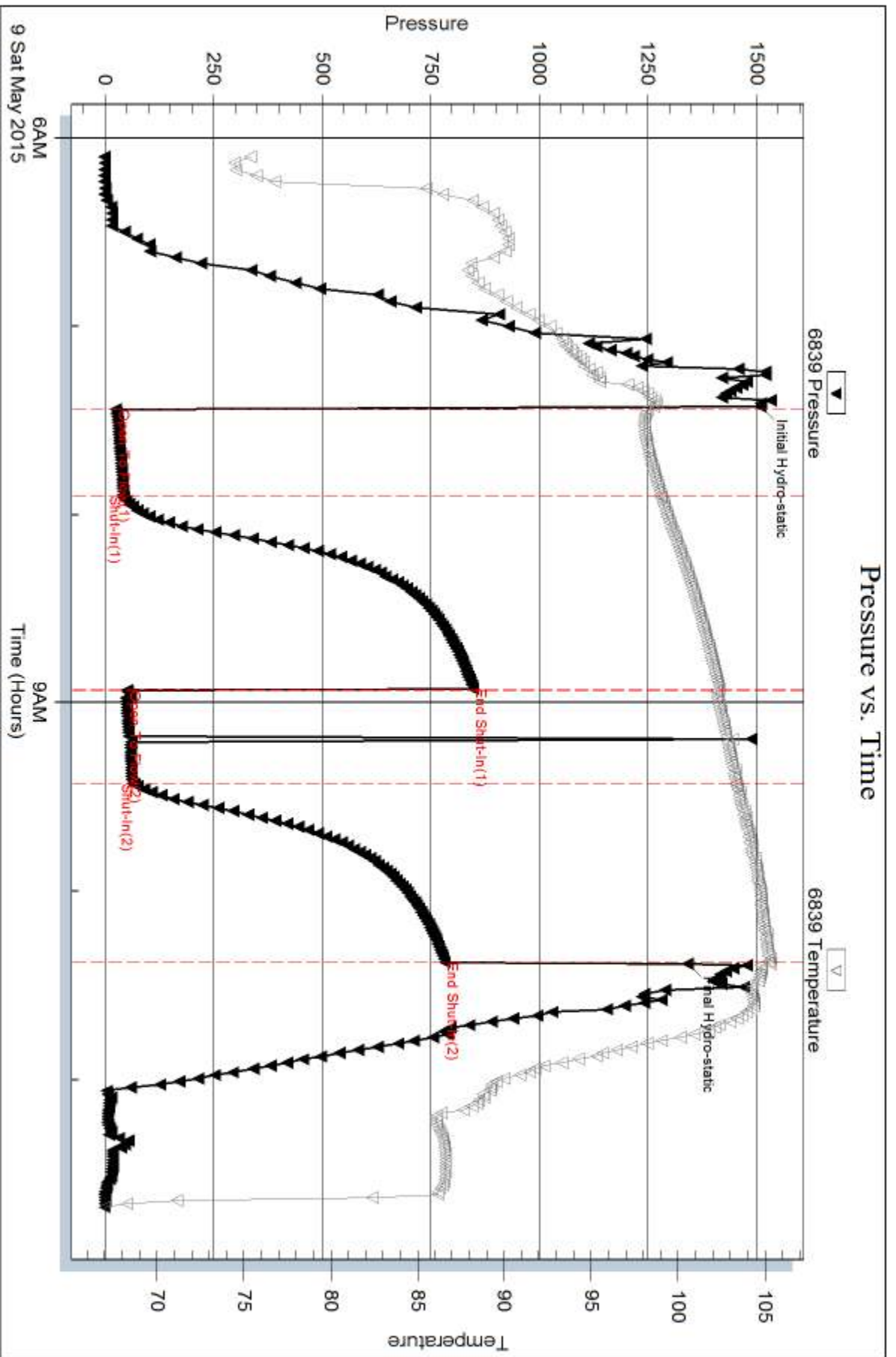
Mud Type: Gel Chem	Cushion Type:	Oil API:	deg API
Mud Weight: 9.00 lb/gal	Cushion Length: ft	Water Salinity:	ppm
Viscosity: 52.00 sec/qt	Cushion Volume: bbl		
Water Loss: 11.07 in ³	Gas Cushion Type:		
Resistivity: ohm.m	Gas Cushion Pressure: psig		
Salinity: 4500.00 ppm			
Filter Cake: 0.00 inches			

Recovery Information

Recovery Table

Length ft	Description	Volume bbl
78.00	Very lightly oil spotted mud mud 100%	0.384

Total Length: 78.00 ft Total Volume: 0.384 bbl
 Num Fluid Samples: 0 Num Gas Bombs: 0 Serial #:
 Laboratory Name: Laboratory Location:
 Recovery Comments:



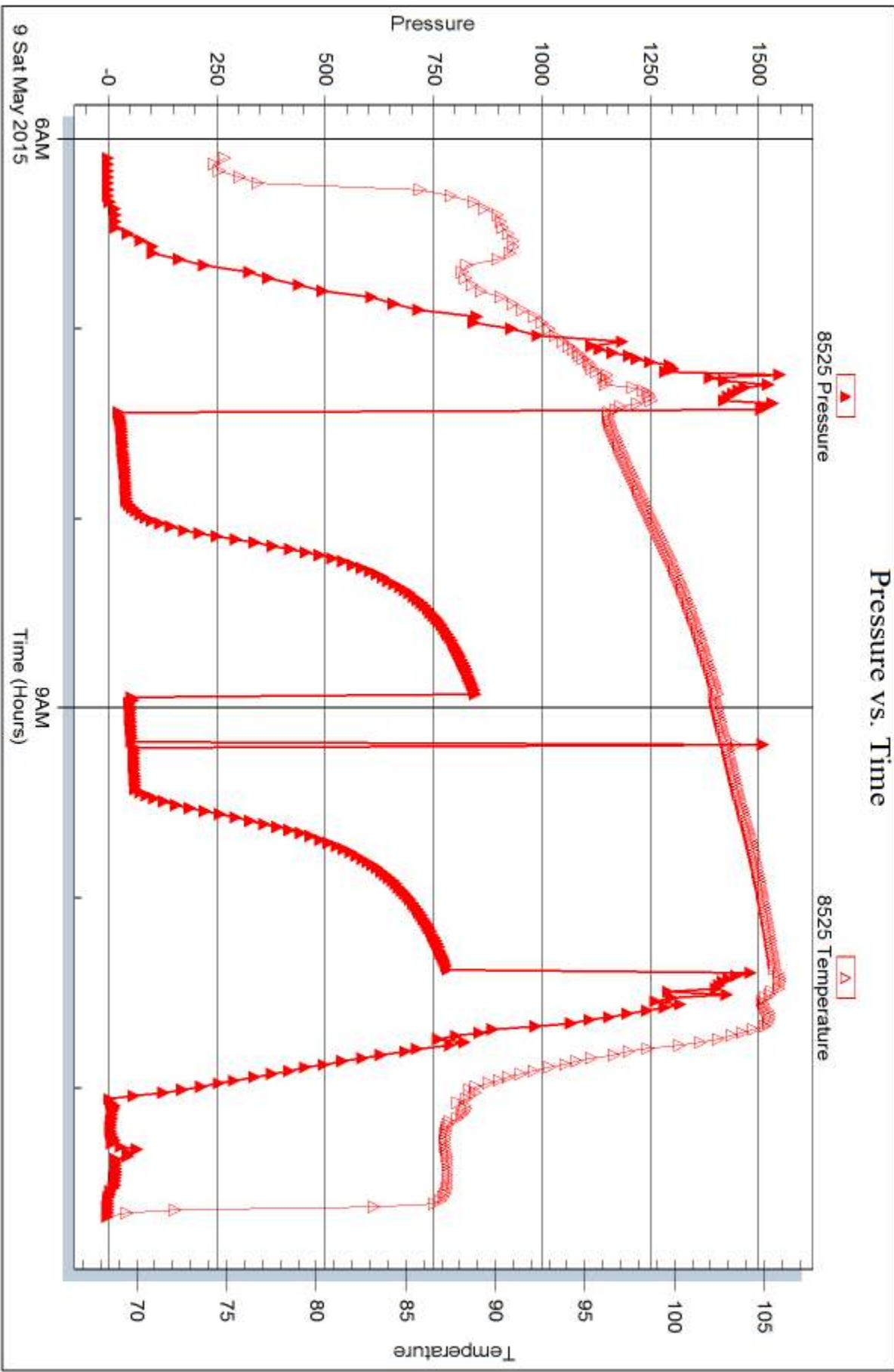
Serial #: 8525

Inside

CMX Inc.

Bushlon #1-36

DST Test Number: 4



Trilobite Testing, Inc

Ref. No: 62888

Printed: 2015.05.12 @ 16:15:15



DRILL STEM TEST REPORT

Prepared For: **CMX Inc.**

1700 N. Waterfront Pkwy.
BLDG. 300B
Wichita KS 67206

ATTN: Ken Leblanc

Bushton #1-36

36-17s-10w Ellsworth,KS

Start Date: 2015.05.10 @ 02:20:00

End Date: 2015.05.10 @ 08:26:00

Job Ticket #: 62889 DST #: 5

Trilobite Testing, Inc
1515 Commerce Parkway Hays, KS 67601
ph: 785-625-4778 fax: 785-625-5620

Printed: 2015.05.12 @ 16:14:38



**TRILOBITE
TESTING, INC**

DRILL STEM TEST REPORT

CMX Inc.
1700 N. Waterfront Pkw y.
BLDG. 300B
Wichita KS 67206
ATTN: Ken Leblanc

36-17s-10w Ellsworth,KS

Bushton #1-36

Job Ticket: 62889

DST#: 5

Test Start: 2015.05.10 @ 02:20:00

GENERAL INFORMATION:

Formation: **Penn Cong - Arbuckle**

Deviated: No Whipstock: ft (KB)

Time Tool Opened: 04:03:30

Time Test Ended: 08:26:00

Test Type: Conventional Bottom Hole (Initial)

Tester: Dustin Ellis

Unit No: 59

Interval: 3170.00 ft (KB) To 3244.00 ft (KB) (TVD)

Reference Elevations: 1762.00 ft (KB)

Total Depth: 3244.00 ft (KB) (TVD)

1749.00 ft (CF)

Hole Diameter: 7.88 inches Hole Condition: Fair

KB to GR/CF: 13.00 ft

Serial #: 6839

Inside

Press@RunDepth: 68.42 psig @ 3232.36 ft (KB)

Capacity: 5000.00 psig

Start Date: 2015.05.10

End Date:

2015.05.10

Last Calib.: 2015.05.11

Start Time: 02:21:00

End Time:

08:26:00

Time On Btm: 2015.05.10 @ 04:03:00

Time Off Btm: 2015.05.10 @ 06:59:00

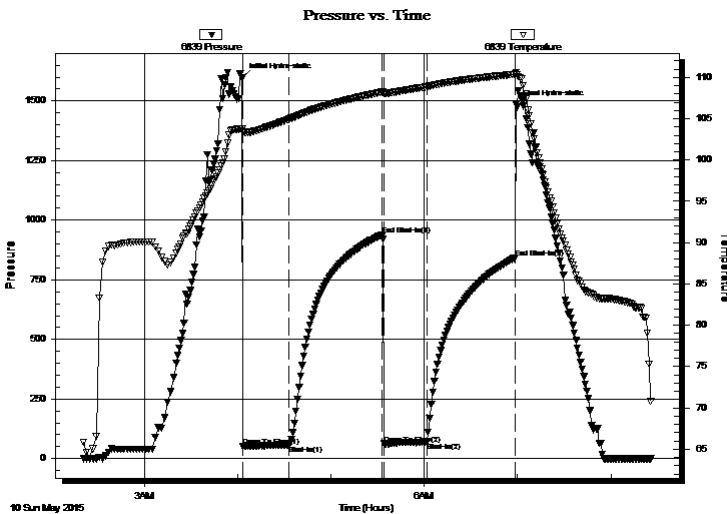
TEST COMMENT: IFP 30 min Weak blow built to 1 1/2"

ISI 60 min. No blow back..

FFP 30 min BOB instantly

FSI 60 min. No blow back....

PRESSURE SUMMARY



Time (Min.)	Pressure (psig)	Temp (deg F)	Annotation
0	1597.66	103.73	Initial Hydro-static
1	51.06	103.38	Open To Flow (1)
30	57.30	104.94	Shut-In(1)
90	939.25	108.22	End Shut-In(1)
91	61.68	108.05	Open To Flow (2)
119	68.42	108.87	Shut-In(2)
176	842.70	110.39	End Shut-In(2)
176	1485.79	110.61	Final Hydro-static

Recovery

Length (ft)	Description	Volume (bbl)
3.00	Clean oil 100%	0.01
12.00	Oil cut mud 1%oil 99%mud	0.06

Gas Rates

	Choke (inches)	Pressure (psig)	Gas Rate (Mcf/d)



**TRILOBITE
TESTING, INC**

DRILL STEM TEST REPORT

CMX Inc.
1700 N. Waterfront Pkwy.
BLDG. 300B
Wichita KS 67206
ATTN: Ken Leblanc

36-17s-10w Ellsworth,KS

Bushton #1-36

Job Ticket: 62889 **DST#: 5**
Test Start: 2015.05.10 @ 02:20:00

GENERAL INFORMATION:

Formation: **Penn Cong - Arbuckle**

Deviated: No Whipstock: ft (KB)

Time Tool Opened: 04:03:30

Time Test Ended: 08:26:00

Test Type: Conventional Bottom Hole (Initial)

Tester: Dustin Ellis

Unit No: 59

Interval: 3170.00 ft (KB) To 3244.00 ft (KB) (TVD)

Total Depth: 3244.00 ft (KB) (TVD)

Hole Diameter: 7.88 inches Hole Condition: Fair

Reference Elevations: 1762.00 ft (KB)

1749.00 ft (CF)

KB to GR/CF: 13.00 ft

Serial #: 8525

Outside

Press@RunDepth: psig @ 3232.36 ft (KB)

Start Date: 2015.05.10 End Date: 2015.05.10

Start Time: 02:21:00 End Time: 08:26:00

Capacity: 5000.00 psig

Last Calib.: 2015.05.11

Time On Btm:

Time Off Btm:

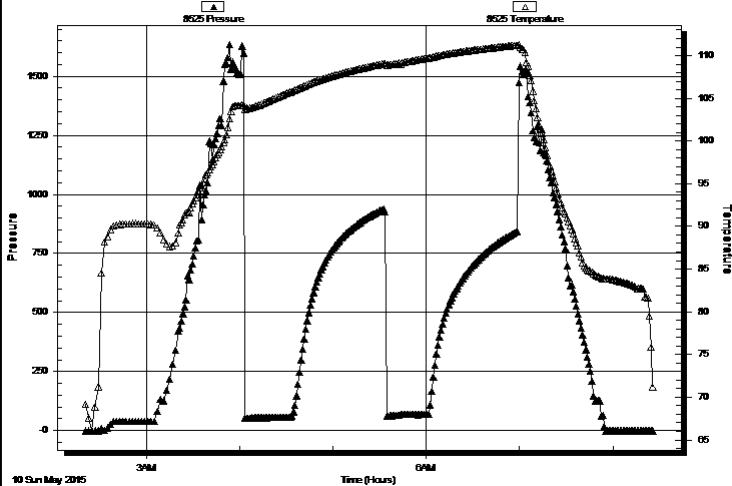
TEST COMMENT: IFP 30 min Weak blow built to 1 1/2"

ISI 60 min. No blow back..

FFP 30 min BOB instantly

FSI 60 min. No blow back....

Pressure vs. Time



PRESSURE SUMMARY

Time (Min.)	Pressure (psig)	Temp (deg F)	Annotation

Recovery

Length (ft)	Description	Volume (bbl)
3.00	Clean oil 100%	0.01
12.00	Oil cut mud 1%oil 99% mud	0.06

Gas Rates

Choke (inches)	Pressure (psig)	Gas Rate (Mcf/d)



**TRILOBITE
TESTING, INC**

DRILL STEM TEST REPORT

TOOL DIAGRAM

CMX Inc.
1700 N. Waterfront Pkw y.
BLDG. 300B
Wichita KS 67206
ATTN: Ken Leblanc

36-17s-10w Ellsworth,KS
Bushton #1-36
Job Ticket: 62889 **DST#: 5**
Test Start: 2015.05.10 @ 02:20:00

Tool Information

Drill Pipe:	Length: 2988.00 ft	Diameter: 3.80 inches	Volume: 41.91 bbl	Tool Weight: 2000.00 lb
Heavy Wt. Pipe:	Length: 0.00 ft	Diameter: 0.00 inches	Volume: 0.00 bbl	Weight set on Packer: 20000.00 lb
Drill Collar:	Length: 183.23 ft	Diameter: 2.25 inches	Volume: 0.90 bbl	Weight to Pull Loose: 62000.00 lb
			<u>Total Volume: 42.81 bbl</u>	Tool Chased 0.00 ft
Drill Pipe Above KB:	23.23 ft			String Weight: Initial 55000.00 lb
Depth to Top Packer:	3170.00 ft			Final 55000.00 lb
Depth to Bottom Packer:	ft			
Interval between Packers:	67.36 ft			
Tool Length:	89.36 ft			
Number of Packers:	2	Diameter: 6.75 inches		

Tool Comments:

Tool Description	Length (ft)	Serial No.	Position	Depth (ft)	Accum. Lengths
-------------------------	--------------------	-------------------	-----------------	-------------------	-----------------------

Shut In Tool	5.00			3153.00	
Hydraulic tool	5.00			3158.00	
Safety Joint	2.00		Fluid	3160.00	
Top Packer	5.00			3165.00	
Packer	5.00			3170.00	22.00 Bottom Of Top Packer
Anchor	5.00			3175.00	
Change Over Sub	0.75			3175.75	
Drill Pipe	31.86			3207.61	
Change Over Sub	0.75			3208.36	
Anchor	24.00			3232.36	
Recorder	0.00	6839	Inside	3232.36	
Recorder	0.00	8525	Outside	3232.36	
Bullnose	5.00			3237.36	67.36 Anchor Tool

Total Tool Length: 89.36



**TRILOBITE
TESTING, INC**

DRILL STEM TEST REPORT

FLUID SUMMARY

CMX Inc.
1700 N. Waterfront Pkw y.
BLDG. 300B
Wichita KS 67206
ATTN: Ken Leblanc

36-17s-10w Ellsworth,KS
Bushton #1-36
Job Ticket: 62889 **DST#: 5**
Test Start: 2015.05.10 @ 02:20:00

Mud and Cushion Information

Mud Type: Gel Chem	Cushion Type:	Oil API:	deg API
Mud Weight: 9.00 lb/gal	Cushion Length: ft	Water Salinity:	ppm
Viscosity: 60.00 sec/qt	Cushion Volume: bbl		
Water Loss: 10.97 in ³	Gas Cushion Type:		
Resistivity: ohm.m	Gas Cushion Pressure: psig		
Salinity: 4500.00 ppm			
Filter Cake: 0.00 inches			

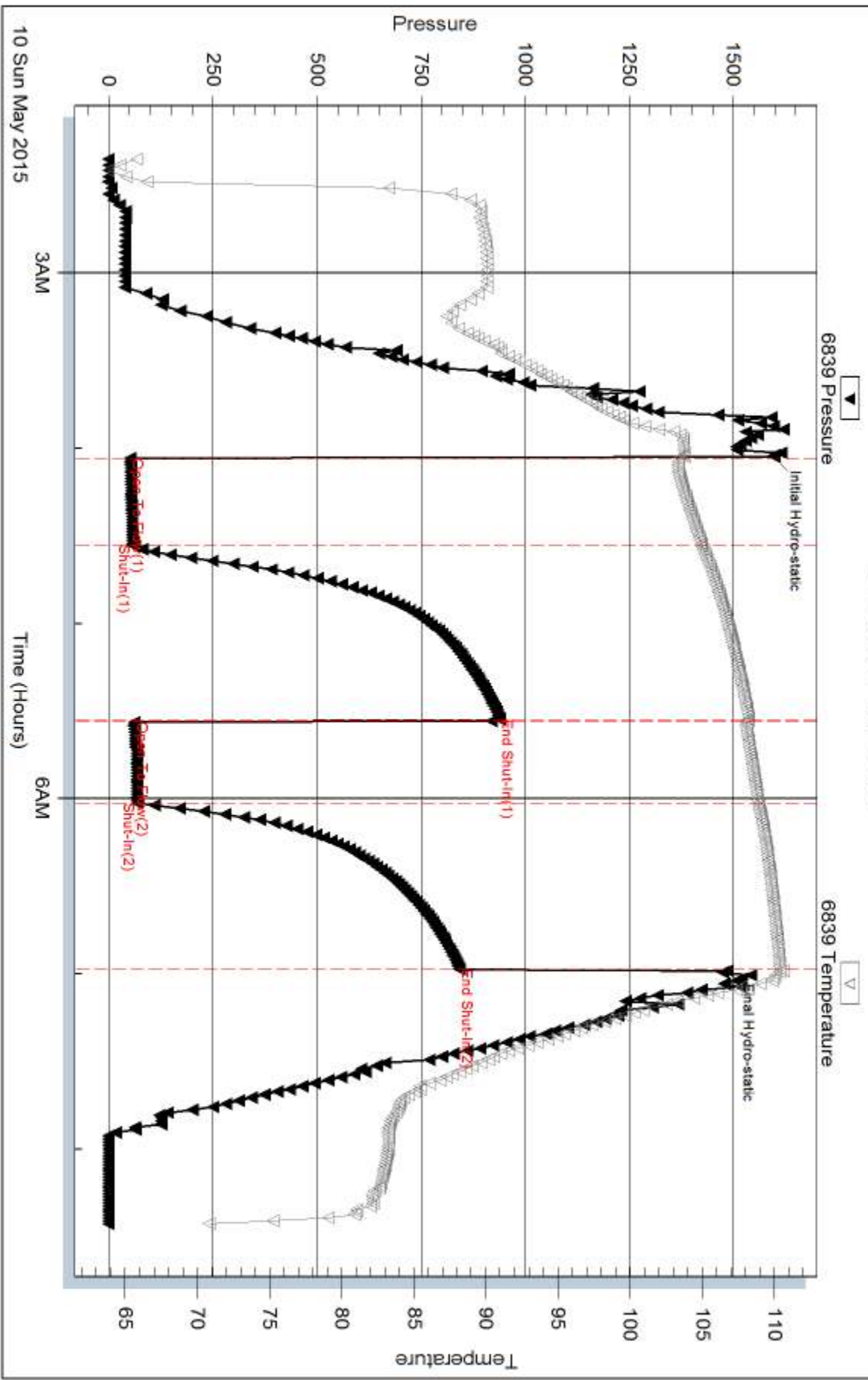
Recovery Information

Recovery Table

Length ft	Description	Volume bbl
3.00	Clean oil 100%	0.015
12.00	Oil cut mud 1%oil 99%mud	0.059

Total Length: 15.00 ft Total Volume: 0.074 bbl
 Num Fluid Samples: 0 Num Gas Bombs: 0 Serial #:
 Laboratory Name: Laboratory Location:
 Recovery Comments:

Pressure vs. Time

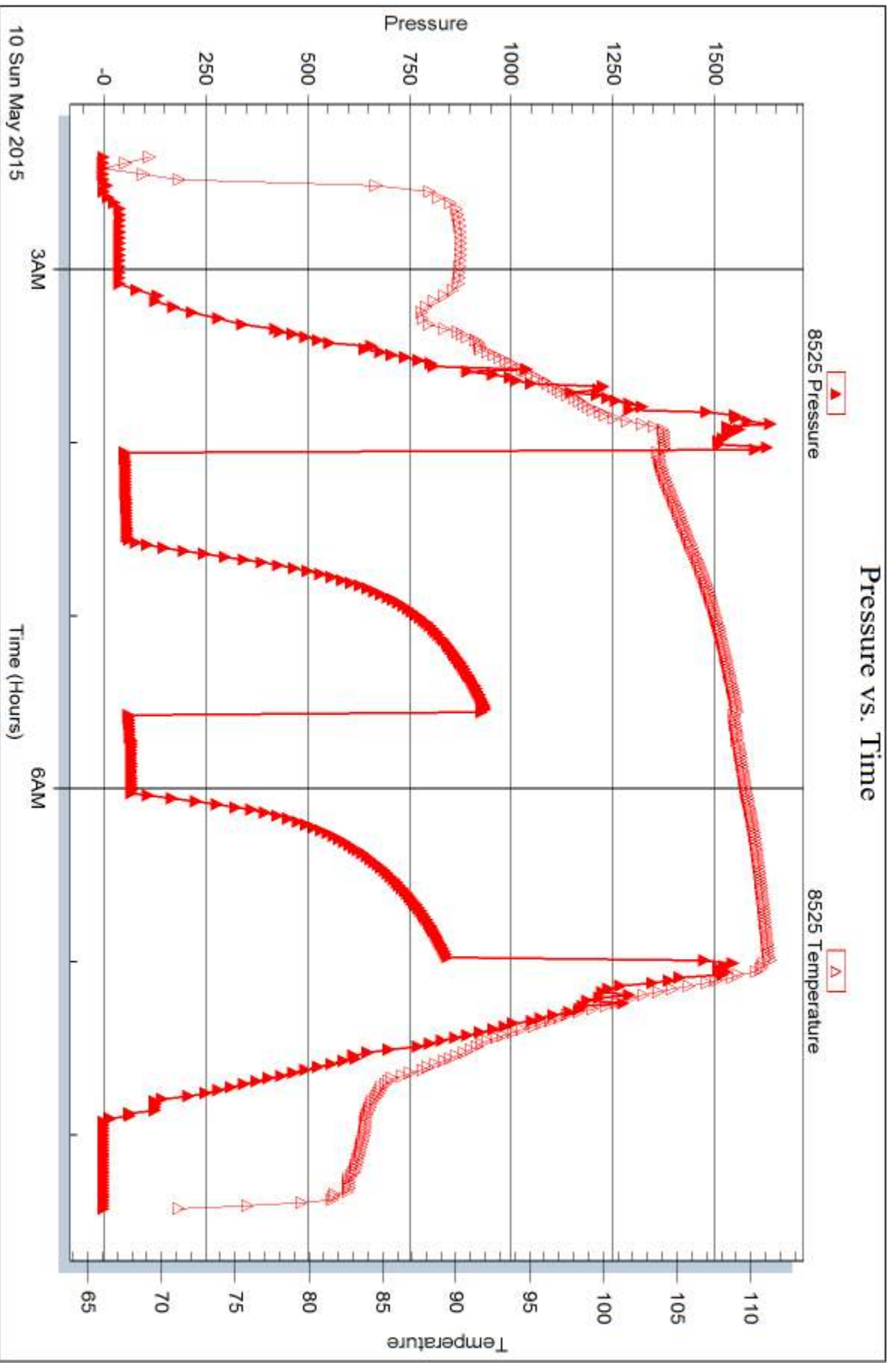


Serial #: 8525

Outside CMX Inc.

Bushion #1-36

DST Test Number: 5





DRILL STEM TEST REPORT

Prepared For: **CMX Inc.**

1700 N. Waterfront Pkwy.
BLDG. 300B
Wichita KS 67206

ATTN: Ken Leblanc

Bushton #1-36

36-17s-10w Ellsworth,KS

Start Date: 2015.05.11 @ 02:23:00

End Date: 2015.05.11 @ 10:19:00

Job Ticket #: 62890 DST #: 6

Trilobite Testing, Inc
1515 Commerce Parkway Hays, KS 67601
ph: 785-625-4778 fax: 785-625-5620

Printed: 2015.05.12 @ 16:13:34

CMX Inc. 36-17s-10w Ellsworth,KS Bushton #1-36 DST # 6 Arbuckle 2015.05.11



**TRILOBITE
TESTING, INC**

DRILL STEM TEST REPORT

CMX Inc.
1700 N. Waterfront Pkwy.
BLDG. 300B
Wichita KS 67206
ATTN: Ken Leblanc

36-17s-10w Ellsworth,KS

Bushton #1-36

Job Ticket: 62890

DST#: 6

Test Start: 2015.05.11 @ 02:23:00

GENERAL INFORMATION:

Formation: **Arbuckle**
 Deviated: No Whipstock: ft (KB)
 Time Tool Opened: 03:52:30
 Time Test Ended: 10:19:00
 Interval: **3242.00 ft (KB) To 3251.00 ft (KB) (TVD)**
 Total Depth: 3251.00 ft (KB) (TVD)
 Hole Diameter: 7.88 inches Hole Condition: Fair
 Test Type: Conventional Bottom Hole (Initial)
 Tester: Dustin Ellis
 Unit No: 59
 Reference Elevations: 1762.00 ft (KB)
 1749.00 ft (CF)
 KB to GR/CF: 13.00 ft

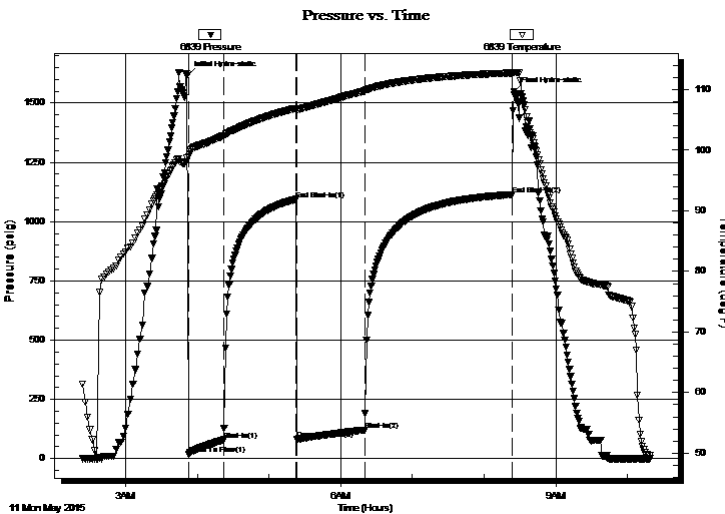
Serial #: 6839

Inside

Press@RunDepth: 120.93 psig @ 3246.00 ft (KB) Capacity: 5000.00 psig
 Start Date: 2015.05.11 End Date: 2015.05.11 Last Calib.: 2015.05.11
 Start Time: 02:24:00 End Time: 10:19:00 Time On Btm: 2015.05.11 @ 03:51:30
 Time Off Btm: 2015.05.11 @ 08:25:00

TEST COMMENT: IFP 30 BOB in 26 min.
 ISI 60 min. No blow back.
 FFP 60 min BOB in 23 min.
 FSI 120 min.No blow back

PRESSURE SUMMARY



Time (Min.)	Pressure (psig)	Temp (deg F)	Annotation
0	1614.75	98.77	Initial Hydro-static
1	18.40	98.96	Open To Flow (1)
31	79.40	102.44	Shut-In(1)
91	1093.65	106.92	End Shut-In(1)
92	82.61	106.75	Open To Flow (2)
149	120.93	109.78	Shut-In(2)
272	1114.40	112.76	End Shut-In(2)
274	1549.97	112.84	Final Hydro-static

Recovery

Length (ft)	Description	Volume (bbl)
40.00	GOCM gas 10% Oil 10% Muid 80%	0.20
262.00	Clean gassy oil 100%	2.37
0.00	120 gas in pipe.	0.00

Gas Rates

	Choke (inches)	Pressure (psig)	Gas Rate (Mcf/d)



TRILOBITE TESTING, INC.

DRILL STEM TEST REPORT

CMX Inc.
1700 N. Waterfront Pkwy.
BLDG. 300B
Wichita KS 67206
ATTN: Ken Leblanc

36-17s-10w Ellsworth,KS

Bushton #1-36

Job Ticket: 62890

DST#: 6

Test Start: 2015.05.11 @ 02:23:00

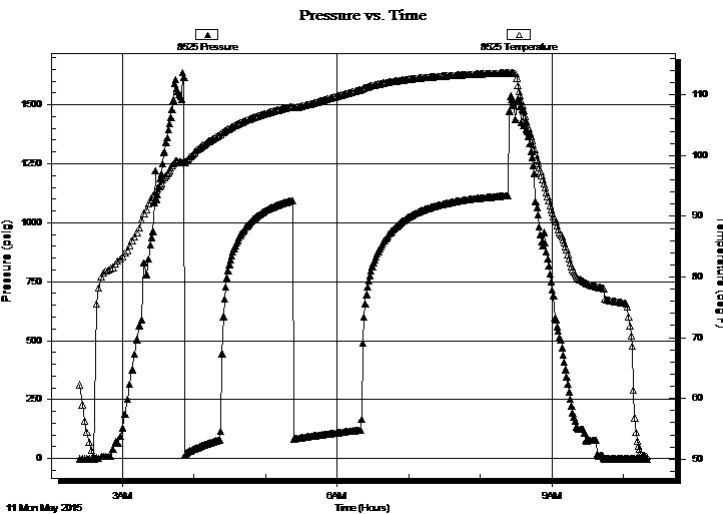
GENERAL INFORMATION:

Formation: **Arbuckle**
 Deviated: No Whipstock: ft (KB)
 Time Tool Opened: 03:52:30
 Time Test Ended: 10:19:00
 Interval: **3242.00 ft (KB) To 3251.00 ft (KB) (TVD)**
 Total Depth: 3251.00 ft (KB) (TVD)
 Hole Diameter: 7.88 inches Hole Condition: Fair
 Test Type: Conventional Bottom Hole (Initial)
 Tester: Dustin Ellis
 Unit No: 59
 Reference Elevations: 1762.00 ft (KB)
 1749.00 ft (CF)
 KB to GR/CF: 13.00 ft

Serial #: 8525 Outside

Press@RunDepth: psig @ 3246.00 ft (KB) Capacity: 5000.00 psig
 Start Date: 2015.05.11 End Date: 2015.05.11 Last Calib.: 2015.05.11
 Start Time: 02:24:00 End Time: 10:19:30 Time On Btm:
 Time Off Btm:

TEST COMMENT: IFP 30 BOB in 26 min.
 ISI 60 min. No blow back.
 FFP 60 min BOB in 23 min.
 FSI 120 min.No blow back



PRESSURE SUMMARY

Time (Min.)	Pressure (psig)	Temp (deg F)	Annotation

Recovery

Length (ft)	Description	Volume (bbl)
40.00	GOCM gas 10% Oil 10% Muid 80%	0.20
262.00	Clean gassy oil 100%	2.37
0.00	120 gas in pipe.	0.00

Gas Rates

Choke (inches)	Pressure (psig)	Gas Rate (Mcf/d)



**TRILOBITE
TESTING, INC**

DRILL STEM TEST REPORT

TOOL DIAGRAM

CMX Inc.
1700 N. Waterfront Pkw y.
BLDG. 300B
Wichita KS 67206
ATTN: Ken Leblanc

36-17s-10w Ellsworth,KS
Bushton #1-36
Job Ticket: 62890 **DST#: 6**
Test Start: 2015.05.11 @ 02:23:00

Tool Information

Drill Pipe:	Length: 3055.00 ft	Diameter: 3.80 inches	Volume: 42.85 bbl	Tool Weight:	2000.00 lb
Heavy Wt. Pipe:	Length: 0.00 ft	Diameter: 0.00 inches	Volume: 0.00 bbl	Weight set on Packer:	20000.00 lb
Drill Collar:	Length: 183.23 ft	Diameter: 2.25 inches	Volume: 0.90 bbl	Weight to Pull Loose:	64000.00 lb
		Total Volume: 43.75 bbl		Tool Chased	0.00 ft
Drill Pipe Above KB:	18.23 ft			String Weight: Initial	55000.00 lb
Depth to Top Packer:	3242.00 ft			Final	56000.00 lb
Depth to Bottom Packer:	ft				
Interval between Packers:	9.00 ft				
Tool Length:	31.00 ft				
Number of Packers:	2	Diameter:	6.75 inches		
Tool Comments:					

Tool Description	Length (ft)	Serial No.	Position	Depth (ft)	Accum. Lengths
------------------	-------------	------------	----------	------------	----------------

Shut In Tool	5.00			3225.00	
Hydraulic tool	5.00			3230.00	
Safety Joint	2.00			3232.00	
Top Packer	5.00			3237.00	
Packer	5.00			3242.00	22.00 Bottom Of Top Packer
Anchor	4.00			3246.00	
Recorder	0.00	6839	Inside	3246.00	
Recorder	0.00	8525	Outside	3246.00	
Bullnose	5.00			3251.00	9.00 Anchor Tool
Total Tool Length:	31.00				



**TRILOBITE
TESTING, INC**

DRILL STEM TEST REPORT

FLUID SUMMARY

CMX Inc.
1700 N. Waterfront Pkwy.
BLDG. 300B
Wichita KS 67206
ATTN: Ken Leblanc

36-17s-10w Ellsworth,KS
Bushton #1-36
Job Ticket: 62890 **DST#: 6**
Test Start: 2015.05.11 @ 02:23:00

Mud and Cushion Information

Mud Type: Gel Chem	Cushion Type:	Oil API:	deg API
Mud Weight: 9.00 lb/gal	Cushion Length: ft	Water Salinity:	ppm
Viscosity: 60.00 sec/qt	Cushion Volume: bbl		
Water Loss: 10.97 in ³	Gas Cushion Type:		
Resistivity: ohm.m	Gas Cushion Pressure: psig		
Salinity: 4500.00 ppm			
Filter Cake: 1.00 inches			

Recovery Information

Recovery Table

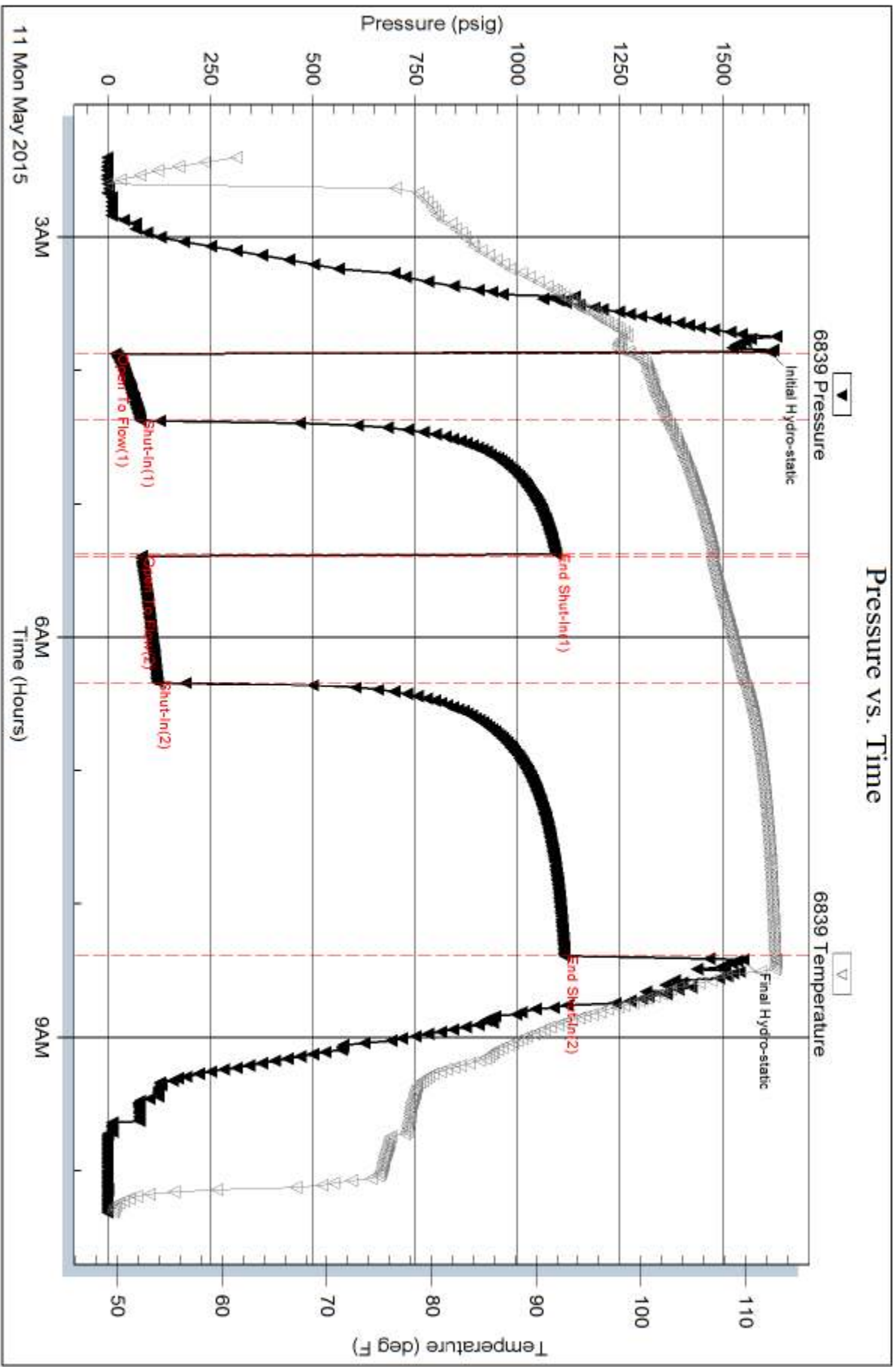
Length ft	Description	Volume bbl
40.00	GOCM gas 10% Oil 10% Muid 80%	0.197
262.00	Clean gassy oil 100%	2.370
0.00	120 gas in pipe.	0.000

Total Length: 302.00 ft Total Volume: 2.567 bbl

Num Fluid Samples: 0 Num Gas Bombs: 0 Serial #:

Laboratory Name: Laboratory Location:

Recovery Comments: Gravity of oil 41 corrected

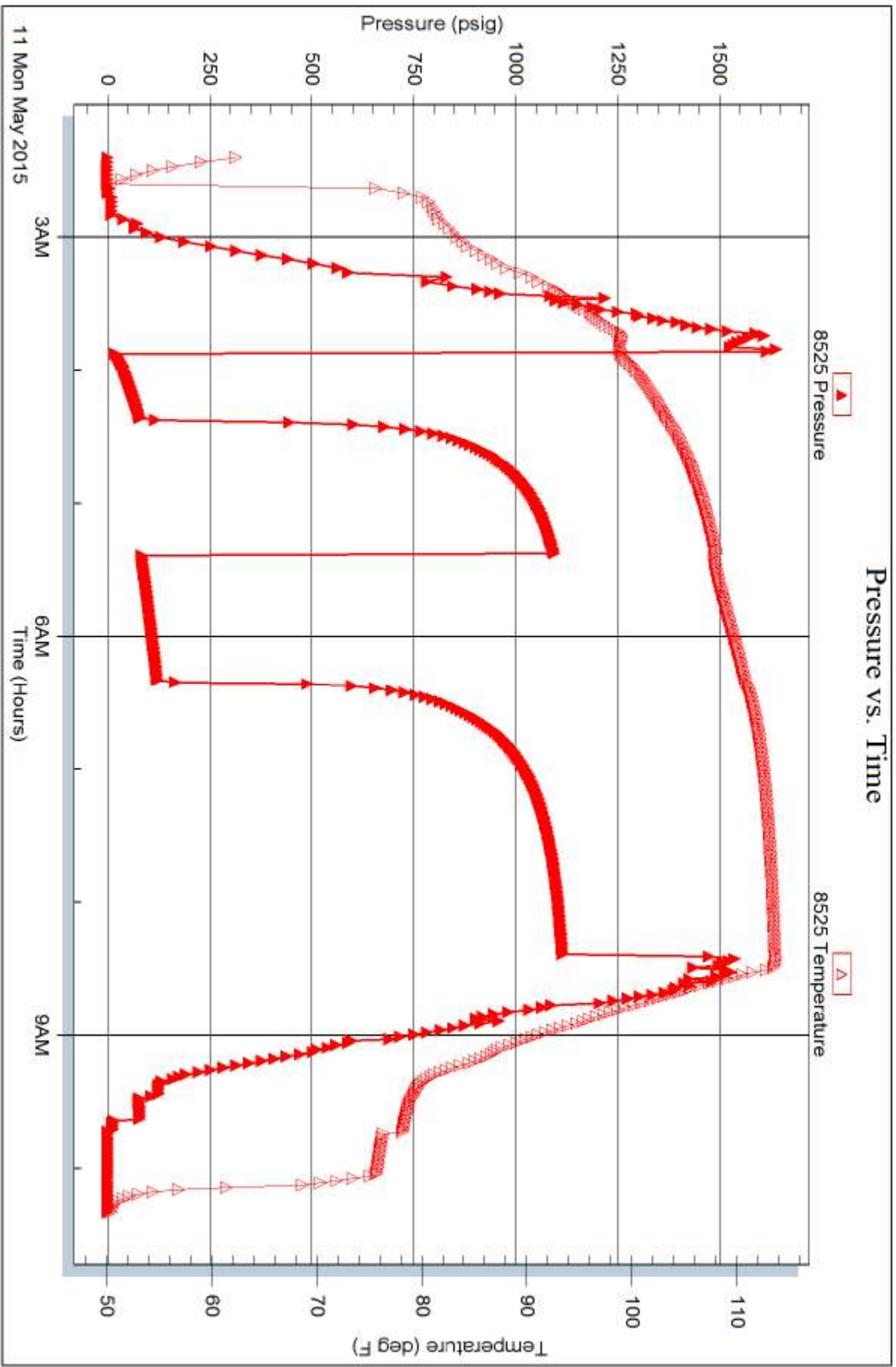


Serial #: 8525

Outside CMX Inc.

Bushion #1-36

DST Test Number: 6



Trilobite Testing, Inc

Ref. No: 62890

Printed: 2015.05.12 @ 16:13:37



TRILOBITE TESTING INC.

1515 Commerce Parkway • Hays, Kansas 67601

Test Ticket

NO. 62885

Well Name & No. Bushton 1-36 Test No. 1 Date 5-7-15
 Company CMX Inc Elevation 1762 KB 1749 GL
 Address 1700 N Waterfront PKWY BLDG 300B Wichita, KS 67206
 Co. Rep / Geo. Ken Leblon Rig Duke Drilling Rig #17
 Location: Sec. 36 Twp. 17 Rge. 10W Co. Ellsworth State KS

Interval Tested 2463-2520 Zone Tested severy sand
 Anchor Length 57 Drill Pipe Run 2288 Mud Wt. 9.2
 Top Packer Depth 2458 Drill Collars Run 183.23 Vis 50
 Bottom Packer Depth 2463 Wt. Pipe Run \$2,000 WL 11.0
 Total Depth 2520 Chlorides 79,000 ppm System LCM 0

Blow Description 1st open - BOB in 3 min
1st shut in - No blow back
2nd open - BOB in 4 min
2nd shut in -

Rec	Feet of	%gas	%oil	%water	%mud
170 <u>60</u>	<u>mud</u>			<u>100</u>	
	<u>muddy water</u>				

Rec Total 230 BHT _____ Gravity 1050 API RW 5 @ 56 °F Chlorides 79,000 ppm
 (A) Initial Hydrostatic 1192 Test _____ T-On Location 8:30 am
 (B) First Initial Flow 84 Jars _____ T-Started 10:05 am
 (C) First Final Flow 121 Safety Joint 75 T-Open 12:00 pm
 (D) Initial Shut-In 815 Circ Sub _____ T-Pulled 3:30
 (E) Second Initial Flow 105 Hourly Standby _____ T-Out 5:15
 (F) Second Final Flow 145 Mileage 65 55 Comments _____
 (G) Final Shut-In 783 Sampler _____
 (H) Final Hydrostatic 1150 Straddle _____
 Shale Packer _____
 Extra Packer _____
 Extra Recorder _____
 Day Standby _____
 Accessibility _____
 Sub Total 1180 MP/DST Disc't _____

Initial Open 45
 Initial Shut-In 60
 Final Flow 45
 Final Shut-In 60
 Approved By _____ Our Representative Dustin Ellis

Trilobite Testing Inc. shall not be liable for damaged of any kind of the property or personnel of the one for whom a test is made, or for any loss suffered or sustained, directly or indirectly, through the use of its equipment, or its statements or opinion concerning the results of any test, tools lost or damaged in the hole shall be paid for at cost by the party for whom the test is made.



TRILOBITE TESTING INC.

1515 Commerce Parkway • Hays, Kansas 67601

Test Ticket

NO. 62886

Well Name & No. Bushton 1-36 Test No. 2 Date 5-8-15
 Company CMX Inc. Elevation 1762 KB 1749 G
 Address 1700 N waterfront PKWY BLDG 300B Wichita KS 67208
 Co. Rep / Geo. Ken Libon Rig Duke 7
 Location: Sec. 36 Twp. 17 Rge. 10W Co. Ellsworth State KS

Interval Tested 2910-2930 Zone Tested Lansing B
 Anchor Length 20 Drill Pipe Run 2733 Mud Wt. 8.9
 Top Packer Depth 2905 Drill Collars Run 183.23 Vis 62
 Bottom Packer Depth 2910 Wt. Pipe Run 51,000 WL 11.5
 Total Depth 2930 Chlorides 3500 ppm System LCM 0

Blow Description 1st open - BOB in 10 sec.

1st shut in - yes blow back
2nd open - BOB instantly.
2nd shut in - yes blow back

Rec	Feet of	%gas	%oil	%water	%mud
3	<u>mud</u>			<u>100</u>	

Rec Total _____ BHT _____ Gravity _____ API RW _____ @ _____ °F Chlorides _____ ppm

- (A) Initial Hydrostatic 1421 Test 1050
- (B) First Initial Flow 29 Jars _____
- (C) First Final Flow 31 Safety Joint 75
- (D) Initial Shut-In 1101 Circ Sub _____
- (E) Second Initial Flow 20 Hourly Standby _____
- (F) Second Final Flow 17 Mileage 65 55
- (G) Final Shut-In 1094 Sampler _____
- (H) Final Hydrostatic 1395 Straddle _____
- Shale Packer _____
- Extra Packer _____
- Extra Recorder _____
- Day Standby _____
- Accessibility _____

T-On Location 12:15
 T-Started 12:43pm
 T-Open 1:55pm
 T-Pulled 4:55
 T-Out 6:16pm
 Comments gas to surface
20 min. on test
open
 Ruined Shale Packer _____
 Ruined Packer _____
 Extra Copies _____
 Sub Total 0
 Total 1180
 MP/DST Disc't _____

Initial Open 30
 Initial Shut-In 60
 Final Flow 30
 Final Shut-In 60

Sub Total 1180

Our Representative Dustin Ellis



TRILOBITE TESTING INC.

1515 Commerce Parkway • Hays, Kansas 67601

Test Ticket

NO. 62887

Well Name & No. Bushton 1-36 Test No. 3 Date 5-9-15
 Company CMX Inc. Elevation 1762 KB 1749 GL
 Address 1700 N waterfront Pkwy BLDG 300B Wichita KS 67206
 Co. Rep / Geo. Ken Leblond Rig Duke 7
 Location: Sec. 36 Twp. 17 Rge. 10w Co. Ellsworth State KS

Interval Tested 2975-2985 Zone Tested Lansing G.
 Anchor Length 10 Drill Pipe Run 2790 Mud Wt. 8.9
 Top Packer Depth 2970 Drill Collars Run 183.27 Vis 62
 Bottom Packer Depth 2975 Wt. Pipe Run 52000 WL 11.5
 Total Depth 2985 Chlorides 3500 ppm System LCM 0

Blow Description 1st open - BOB in 10 sec.
1st shut-in - Yes blow back.
2nd open - BOB in 45 sec.
2nd shut-in - Yes blow back.

Rec	Feet of	%gas	%oil	%water	%mud
<u>252</u>	<u>muddy water</u>		<u>50</u>	<u>50</u>	
<u>418</u>	<u>water</u>		<u>100</u>		

Rec Total 670 BHT _____ Gravity _____ API RW .4 @ 92 °F Chlorides 78,000 ppm.
 (A) Initial Hydrostatic 14172 Test 1050
 (B) First Initial Flow 69 Jars _____
 (C) First Final Flow 146 Safety Joint 75
 (D) Initial Shut-In 953 Circ Sub _____
 (E) Second Initial Flow 165 Hourly Standby _____
 (F) Second Final Flow 281 Mileage 65 55
 (G) Final Shut-In 952 Sampler _____
 (H) Final Hydrostatic 14174 Straddle _____
 Shale Packer _____
 Extra Packer _____
 Extra Recorder _____
 Day Standby _____
 Accessibility _____
 Sub Total 1180

T-On Location 1:30 am
 T-Started 1:55 am
 T-Open 3:02 am
 T-Pulled 6:47 pm
 T-Out 9:00 am
 Comments Gas fo surfac in 5 min.
 Ruined Shale Packer _____
 Ruined Packer _____
 Extra Copies _____
 Sub Total 0
 Total 1180
 MP/DST Disc't _____

Approved By _____ Our Representative Dustin Ellis

Trilobite Testing Inc. shall not be liable for damaged of any kind of the property or personnel of the one for whom a test is made, or for any loss suffered or sustained, directly or indirectly, through the use of its equipment, or its statements or opinion concerning the results of any test, tools lost or damaged in the hole shall be paid for at cost by the party for whom the test is made.



TRILOBITE TESTING INC.

1515 Commerce Parkway • Hays, Kansas 67601

Test Ticket

NO. 62888

Well Name & No. Buston 1-36 Test No. 4 Date 5-9-15
 Company CMX Inc. Elevation 1762 KB 1749 GL
 Address 1700 N waterfront Pkwy BLDG 300 B Wichita KS 67206
 Co. Rep / Geo. Ken Leblanc Rig Duke 7
 Location: Sec. 36 Twp. 17 Rge. 10w Co. Ellsworth State KS

Interval Tested 3075-3100 Zone Tested Lansing J
 Anchor Length 25 Drill Pipe Run 2887 Mud Wt. 9
 Top Packer Depth 3070 Drill Collars Run 183.23 Vis 52
 Bottom Packer Depth 3075 Wt. Pipe Run 52000 WL 1162
 Total Depth 3100 Chlorides 4500 ppm System LCM G

Blow Description 1st open - weak blow built to 3 inches.
1st shut in - No blow back
2nd open - Dead Flushed tool weak surface blow
2nd shut in - No blow back

Rec	Feet of	%gas	%oil	%water	%mud
<u>78</u>	<u>very slightly oil spotted mud</u>			<u>100</u>	
Rec	Feet of	%gas	%oil	%water	%mud
Rec	Feet of	%gas	%oil	%water	%mud
Rec	Feet of	%gas	%oil	%water	%mud
Rec	Feet of	%gas	%oil	%water	%mud

Rec Total 78 BHT _____ Gravity _____ API RW _____ @ _____ °F Chlorides _____ ppm
 (A) Initial Hydrostatic 1509 Test 1050
 (B) First Initial Flow 25 Jars _____
 (C) First Final Flow 42 Safety Joint 75
 (D) Initial Shut-In 847 Circ Sub _____
 (E) Second Initial Flow 50 Hourly Standby _____
 (F) Second Final Flow 69 Mileage 65 ⁵⁵
 (G) Final Shut-In 782 Sampler _____
 (H) Final Hydrostatic 1341 Straddle _____

Initial Open 30
 Initial Shut-In 60
 Final Flow 30
 Final Shut-In 60

Shale Packer _____
 Extra Packer _____
 Extra Recorder _____
 Day Standby _____
 Accessibility _____

Sub Total 1180

T-On Location 5:30 pm
 T-Started 6:05 pm *
 T-Open 7:25 pm
 T-Pulled 10:25 pm
 T-Out 11:45 pm
 Comments _____
 Ruined Shale Packer _____
 Ruined Packer _____
 Extra Copies _____
 Sub Total 0
 Total 1180
 MP/DST Disc't _____

Approved By _____ Our Representative Justin Ellis

Trilobite Testing Inc. shall not be liable for damaged of any kind of the property or personnel of the one for whom a test is made, or for any loss suffered or sustained, directly or indirectly, through the use of its equipment, or its statements or opinion concerning the results of any test, tools lost or damaged in the hole shall be paid for at cost by the party for whom the test is made.



TRILOBITE TESTING INC.

1515 Commerce Parkway • Hays, Kansas 67601

Test Ticket

NO. 62889

Well Name & No. Bushman 1-36 Test No. 5 Date 5-10-15
 Company CMX Inc Elevation 1762 KB 1749 GL
 Address 1700 W waterfront PKWY BHD6 300B Wichita KS 67206
 Co. Rep / Geo. Ken Leblanc Rig Duke 17
 Location: Sec. 36 Twp. 17 Rge. 10W Co. Ellsworth State KS

Interval Tested 3170-3244 Zone Tested conglomerate - Arbuckle
 Anchor Length 74 Drill Pipe Run 2988 Mud Wt. 9.1
 Top Packer Depth 3165 Drill Collars Run 183.23 Vis 60
 Bottom Packer Depth 3170 Wt. Pipe Run 55000 WL 11
 Total Depth 3244 Chlorides 4500 ppm System LCM 0

Blow Description 1st open - weak blow built to 1 1/2 inches.
1st shut in - No blow back.
2nd open - Dead. Flushed tool very weak surface blow.
2nd shut in - No blow back.

Rec	Feet of	%gas	%oil	%water	%mud
<u>3</u>	<u>clean oil</u>	<u>100</u>			
<u>12</u>	<u>oil cut mud</u>	<u>1</u>		<u>99</u>	

Rec Total 15 BHT _____ Gravity _____ API RW _____ @ _____ °F Chlorides _____ ppm

- (A) Initial Hydrostatic 1597 Test 1050
 - (B) First Initial Flow 51 Jars _____
 - (C) First Final Flow 57 Safety Joint 75
 - (D) Initial Shut-In 939 Circ Sub _____
 - (E) Second Initial Flow 61 Hourly Standby _____
 - (F) Second Final Flow 68 Mileage 65 ⁵⁵
 - (G) Final Shut-In 942 Sampler _____
 - (H) Final Hydrostatic 1485 Straddle _____
 - Shale Packer _____
 - Extra Packer _____
 - Extra Recorder _____
 - Day Standby _____
 - Accessibility _____
- Sub Total 1180

T-On Location 1:45pm
 T-Started 2:20pm
 T-Open 4:03pm
 T-Pulled 7:03pm
 T-Out 8:30pm

Comments _____
 Ruined Shale Packer _____
 Ruined Packer _____
 Extra Copies _____
 Sub Total 0
 Total 1180
 MP/DST Disc't _____

Initial Open 30
 Initial Shut-In 60
 Final Flow 30
 Final Shut-In 60
 Approved By _____ Our Representative Dustin Ellis

Trilobite Testing Inc. shall not be liable for damaged of any kind of the property or personnel of the one for whom a test is made, or for any loss suffered or sustained, directly or indirectly, through the use of its equipment, or its statements or opinion concerning the results of any test, tools lost or damaged in the hole shall be paid for at cost by the party for whom the test is made.



TRILOBITE TESTING INC.

1515 Commerce Parkway • Hays, Kansas 67601

Test Ticket

NO. 62890

Well Name & No. Bushton 1-36 Test No. 6 Date 5-11-15
 Company CMT Inc. Elevation 1762 KB 1749 GL
 Address 1700 N waterfront Pkwy BLDG 300B Wichita KS 67206
 Co. Rep / Geo. Ken Leblom Rig Duke 17
 Location: Sec. 36 Twp. 17 Rge. 100 Co. Ellsworth State ks

Interval Tested 3242 - 3251 Zone Tested Arbuckle
 Anchor Length 9 Drill Pipe Run 3055 Mud Wt. 9.1
 Top Packer Depth 3237 Drill Collars Run 183.23 Vis 60
 Bottom Packer Depth 3242 Wt. Pipe Run 55,000 WL 11.0
 Total Depth 3251 Chlorides 4500 ppm System LCM 0

Blow Description 1st open - BOB in 26 min.
1st shut in - No blow back.
2nd open - BOB in 23 min.
2nd shut in - No blow back.

Rec	Feet of	%gas	%oil	%water	%mud
<u>40</u>	<u>gassy oil cut mud</u>	<u>10</u>	<u>10</u>	<u>80</u>	
<u>262</u>	<u>clean gassy oil</u>	<u>10</u>	<u>90</u>		

Rec Total 362 BHT _____ Gravity 41 API RW _____ @ _____ °F Chlorides _____ ppm

(A) Initial Hydrostatic 1614 Test 1050 T-On Location 200 cm
 (B) First Initial Flow 18 Jars _____ T-Started 2:23 am
 (C) First Final Flow 79 Safety Joint 75 T-Open 3:52 am
 (D) Initial Shut-In 1093 Circ Sub _____ T-Pulled 8:22 am
 (E) Second Initial Flow 82 Hourly Standby _____ T-Out 10:20
 (F) Second Final Flow 120 Mileage 65 55 Comments 120 gas
 (G) Final Shut-In 1114 Sampler _____ in pipe
 (H) Final Hydrostatic 1549 Straddle _____ Ruined Shale Packer _____
 Shale Packer _____ Ruined Packer _____
 Extra Packer _____ Extra Copies _____
 Extra Recorder _____ Sub Total 0
 Day Standby _____ Total 1180
 Accessibility _____ MP/DST Disc't _____
 Sub Total 1180

Approved By _____ Our Representative Rustin Ellis

Trilobite Testing Inc. shall not be liable for damaged of any kind of the property or personnel of the one for whom a test is made, or for any loss suffered or sustained, directly or indirectly, through the use of its equipment, or its statements or opinion concerning the results of any test, tools lost or damaged in the hole shall be paid for at cost by the party for whom the test is made.