



DRILL STEM TEST REPORT

Prepared For: **RJM COMPANY**

P.O. BOX 256
CLAFLIN, KANSAS 67525-0256

ATTN: KURT TALBOTT

FELTES 1

34-16S-12W BARTON

Start Date: 2015.07.21 @ 15:35:00

End Date: 2015.07.21 @ 21:25:30

Job Ticket #: 01044 DST #: 1

Eagle Testers
1309 Patton Road Great Bend, Kansas 67530
620-791-7394

Printed: 2015.07.30 @ 13:21:57

RJM COMPANY
34-16S-12W BARTON
FELTES 1
DST # 1
KANSAS CITY, A TO F
2015.07.21



DRILL STEM TEST REPORT

RJM COMPANY
 P.O. BOX 256
 CLAFLIN, KANSAS 67525-0256
 ATTN: KURT TALBOTT

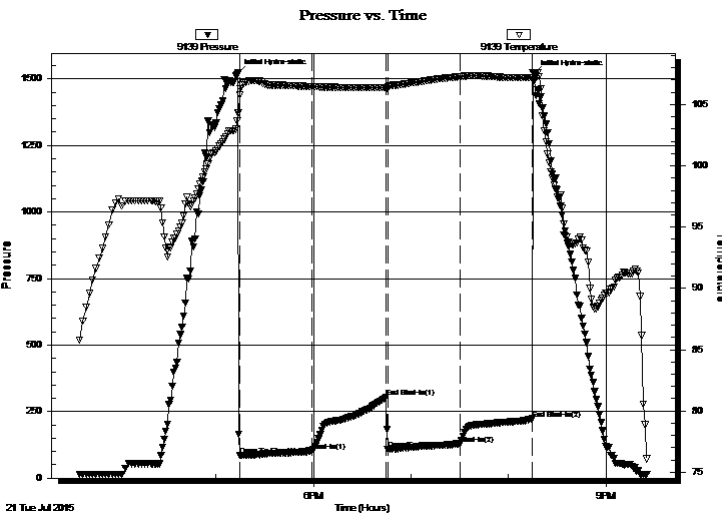
34-16S-12W BARTON
FELTES 1
 Job Ticket: 01044 **DST#: 1**
 Test Start: 2015.07.21 @ 15:35:00

GENERAL INFORMATION:

Formation: **KANSAS CITY 'A TO F'**
 Deviated: No Whipstock: ft (KB)
 Time Tool Opened: 17:14:30
 Time Test Ended: 21:25:30
 Interval: **3056.00 ft (KB) To 3136.00 ft (KB) (TVD)**
 Total Depth: 3156.00 ft (KB) (TVD)
 Hole Diameter: 7.78 inches Hole Condition:
 Test Type: Conventional Bottom Hole (Initial)
 Tester: GENE BUDIG
 Unit No: 1-56
 Reference Elevations: 1885.00 ft (KB)
 1880.00 ft (CF)
 KB to GR/CF: 5.00 ft

Serial #: 9139 Outside
 Press@RunDepth: 127.27 psia @ 3130.97 ft (KB) Capacity: 5000.00 psia
 Start Date: 2015.07.21 End Date: 2015.07.21 Last Calib.: 2015.07.21
 Start Time: 15:36:00 End Time: 21:25:30 Time On Btm: 2015.07.21 @ 17:13:30
 Time Off Btm:

TEST COMMENT: 1ST OPENING 45 MINUTES SLID TOOL 12 FEET TO BOTTOM FLUSHED TOOK WEAK 1 INCH BLOW
 1ST SHUT-IN 45 MINUTES-NO BLOW BACK
 2ND OPENING 45 MINUTES-VERY WEAK BUILDING BLOW BUILT TO



PRESSURE SUMMARY

Time (Min.)	Pressure (psia)	Temp (deg F)	Annotation
0	1521.50	104.29	Initial Hydro-static
1	84.68	105.77	Open To Flow (1)
46	100.03	106.45	Shut-In(1)
91	303.44	106.37	End Shut-In(1)
92	108.45	106.31	Open To Flow (2)
137	127.27	107.27	Shut-In(2)
181	222.92	107.21	End Shut-In(2)
182	1517.99	107.57	Initial Hydro-static

Recovery

Length (ft)	Description	Volume (bbl)
130.00	drilling mud w with a very slight show of	1.82

Gas Rates

Choke (inches)	Pressure (psia)	Gas Rate (Mcf/d)



DRILL STEM TEST REPORT

RJM COMPANY
 P.O. BOX 256
 CLAFLIN, KANSAS 67525-0256
 ATTN: KURT TALBOTT

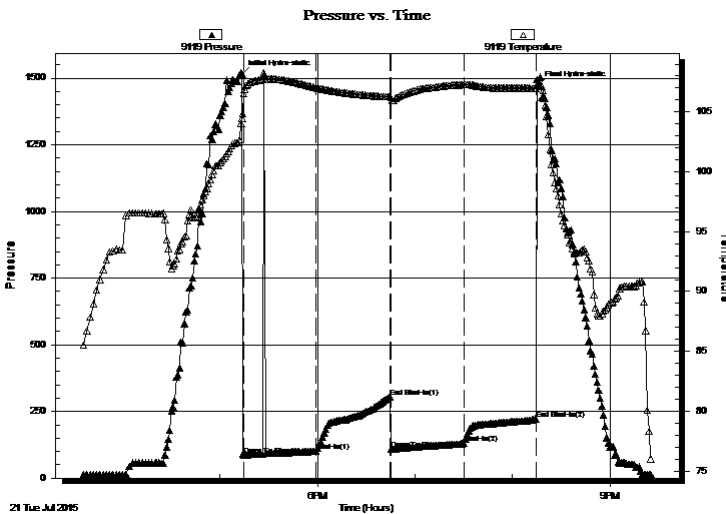
34-16S-12W BARTON
FELTES 1
 Job Ticket: 01044 **DST#: 1**
 Test Start: 2015.07.21 @ 15:35:00

GENERAL INFORMATION:

Formation: **KANSAS CITY 'A TO F'**
 Deviated: No Whipstock: ft (KB)
 Time Tool Opened: 17:14:30
 Time Test Ended: 21:25:30
 Interval: **3056.00 ft (KB) To 3136.00 ft (KB) (TVD)**
 Total Depth: 3156.00 ft (KB) (TVD)
 Hole Diameter: 7.78 inches Hole Condition:
 Test Type: Conventional Bottom Hole (Initial)
 Tester: GENE BUDIG
 Unit No: 1-56
 Reference Elevations: 1885.00 ft (KB)
 1880.00 ft (CF)
 KB to GR/CF: 5.00 ft

Serial #: 9119 Inside
 Press@RunDepth: 221.64 psia @ 3130.97 ft (KB) Capacity: 5000.00 psia
 Start Date: 2015.07.21 End Date: 2015.07.21 Last Calib.: 2015.07.21
 Start Time: 15:36:00 End Time: 21:25:30 Time On Btm: 2015.07.21 @ 17:13:30
 Time Off Btm: 2015.07.21 @ 20:16:00

TEST COMMENT: 1ST OPENING 45 MINUTES SLID TOOL 12 FEET TO BOTTOM FLUSHED TOOK WEAK 1 INCH BLOW
 1ST SHUT-IN 45 MINUTES-NO BLOW BACK
 2ND OPENING 45 MINUTES-VERY WEAK BUILDING BLOW BUILT TO



PRESSURE SUMMARY

Time (Min.)	Pressure (psia)	Temp (deg F)	Annotation
0	1514.59	104.42	Initial Hydro-static
1	87.04	106.54	Open To Flow (1)
46	102.58	107.01	Shut-In(1)
91	304.88	106.26	End Shut-In(1)
92	109.80	106.17	Open To Flow (2)
137	129.61	107.29	Shut-In(2)
181	221.64	106.97	End Shut-In(2)
183	1473.44	107.28	Final Hydro-static

Recovery

Length (ft)	Description	Volume (bbl)
130.00	drilling mud w with a very slight show of	1.82

Gas Rates

	Choke (inches)	Pressure (psia)	Gas Rate (Mcf/d)



DRILL STEM TEST REPORT

TOOL DIAGRAM

RJM COMPANY

34-16S-12W BARTON

P.O. BOX 256
CLAFLIN, KANSAS 67525-0256

FELTES 1

Job Ticket: 01044

DST#: 1

ATTN: KURT TALBOTT

Test Start: 2015.07.21 @ 15:35:00

Tool Information

Drill Pipe:	Length: 3040.00 ft	Diameter: 3.80 inches	Volume: 42.64 bbl	Tool Weight: 2000.00 lb
Heavy Wt. Pipe:	Length: 0.00 ft	Diameter: 0.00 inches	Volume: 0.00 bbl	Weight set on Packer: 20000.00 lb
Drill Collar:	Length: 0.00 ft	Diameter: 0.00 inches	Volume: 0.00 bbl	Weight to Pull Loose: 56000.00 lb
			<u>Total Volume: 42.64 bbl</u>	Tool Chased 12.00 ft
Drill Pipe Above KB:	4.00 ft			String Weight: Initial 44000.00 lb
Depth to Top Packer:	3056.00 ft			Final 44000.00 lb
Depth to Bottom Packer:	ft			
Interval between Packers:	79.97 ft			
Tool Length:	99.97 ft			
Number of Packers:	2	Diameter: 6.75 inches		

Tool Comments:

Tool Description	Length (ft)	Serial No.	Position	Depth (ft)	Accum. Lengths
------------------	-------------	------------	----------	------------	----------------

Shut In Tool	5.00			3041.00	
Hydraulic tool	5.00			3046.00	
Top Packer	5.00			3051.00	
Packer	5.00			3056.00	20.00 Bottom Of Top Packer
Anchor	5.00			3061.00	
Change Over Sub	0.75			3061.75	
Drill Pipe	63.47			3125.22	
Change Over Sub	0.75			3125.97	
Anchor	5.00			3130.97	
Recorder	0.00	9119	Inside	3130.97	
Recorder	0.00	9139	Outside	3130.97	
Bullnose	5.00			3135.97	79.97 Anchor Tool

Total Tool Length: 99.97



DRILL STEM TEST REPORT

FLUID SUMMARY

RJM COMPANY

34-16S-12W BARTON

P.O. BOX 256
CLAFLIN, KANSAS 67525-0256

FELTES 1

Job Ticket: 01044

DST#: 1

ATTN: KURT TALBOTT

Test Start: 2015.07.21 @ 15:35:00

Mud and Cushion Information

Mud Type: Gel Chem
Mud Weight: 9.00 lb/gal
Viscosity: 46.00 sec/qt
Water Loss: 7.98 in³
Resistivity: ohm.m
Salinity: 3000.00 ppm
Filter Cake: 1.00 inches

Cushion Type:
Cushion Length: ft
Cushion Volume: bbl
Gas Cushion Type:
Gas Cushion Pressure: psia

Oil API: deg API
Water Salinity: ppm

Recovery Information

Recovery Table

Length ft	Description	Volume bbl
130.00	drilling mud with a very slight show of	1.824

Total Length: 130.00 ft Total Volume: 1.824 bbl

Num Fluid Samples: 0 Num Gas Bombs: 0 Serial #:

Laboratory Name: Laboratory Location:

Recovery Comments:

Pressure vs. Time

