



DRILL STEM TEST REPORT

Prepared For: **Landmark Resources Inc.**

1616 S. Voss Rd. Suite 600
Houston, TX 77057

ATTN: Terry McLeod

Wesseler #28-2

S28-16s-34w Scott,KS

Start Date: 2015.06.15 @ 11:18:00

End Date: 2015.06.15 @ 18:55:09

Job Ticket #: 61690 DST #: 1

Trilobite Testing, Inc
1515 Commerce Parkway Hays, KS 67601
ph: 785-625-4778 fax: 785-625-5620

Printed: 2015.06.19 @ 09:50:18

Landmark Resources Inc. S28-16s-34w Scott,KS Wesseler #28-2 DST # 1 LKC "1" 2015.06.15



**TRILOBITE
TESTING, INC**

DRILL STEM TEST REPORT

Landmark Resources Inc.

S28-16s-34w Scott,KS

1616 S. Voss Rd. Suite 600
Houston, TX 77057

Wesseler #28-2

Job Ticket: 61690

DST#: 1

ATTN: Terry McLeod

Test Start: 2015.06.15 @ 11:18:00

GENERAL INFORMATION:

Formation: **LKC "I"**

Deviated: No Whipstock: ft (KB)

Time Tool Opened: 13:46:10

Time Test Ended: 18:55:09

Test Type: Conventional Bottom Hole (Initial)

Tester: Chuck Smith

Unit No: 61

Interval: 4260.00 ft (KB) To 4295.00 ft (KB) (TVD)

Total Depth: 4295.00 ft (KB) (TVD)

Hole Diameter: 7.88 inches Hole Condition: Good

Reference Elevations: 3147.00 ft (KB)

3136.00 ft (CF)

KB to GR/CF: 11.00 ft

Serial #: 8357

Inside

Press@RunDepth: 106.76 psig @ 4263.00 ft (KB)

Start Date: 2015.06.15

End Date:

2015.06.15

Start Time: 11:18:02

End Time:

18:55:10

Capacity: 8000.00 psig

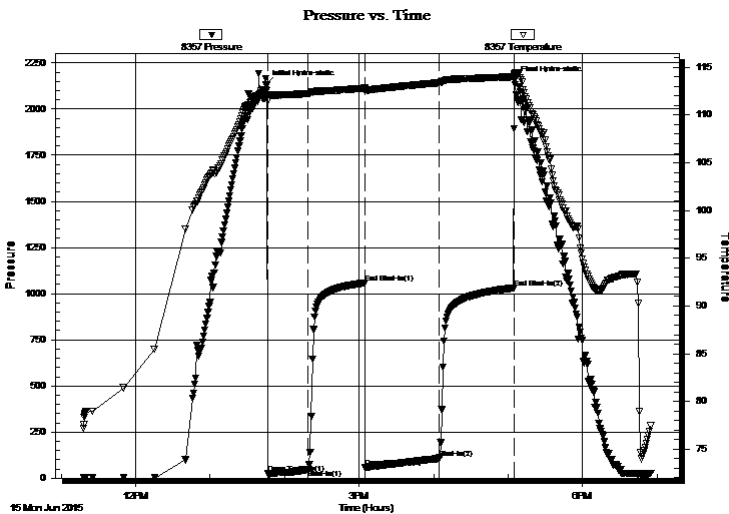
Last Calib.: 2015.06.15

Time On Btm: 2015.06.15 @ 13:45:10

Time Off Btm: 2015.06.15 @ 17:05:09

TEST COMMENT: 30- 3" Blow .
45- No return.
60- Surface blow .
60- No return.

PRESSURE SUMMARY



Time (Min.)	Pressure (psig)	Temp (deg F)	Annotation
0	2134.49	112.59	Initial Hydro-static
1	24.59	111.46	Open To Flow (1)
34	46.85	112.24	Shut-In(1)
80	1057.98	112.82	End Shut-In(1)
80	58.45	112.59	Open To Flow (2)
140	106.76	113.38	Shut-In(2)
200	1030.88	114.01	End Shut-In(2)
200	2157.16	114.33	Final Hydro-static

Recovery

Length (ft)	Description	Volume (bbl)
245.00	GMCO 10g 15m 75o	1.20

Gas Rates

	Choke (inches)	Pressure (psig)	Gas Rate (Mcf/d)



**TRILOBITE
TESTING, INC**

DRILL STEM TEST REPORT

TOOL DIAGRAM

Landmark Resources Inc.

S28-16s-34w Scott,KS

1616 S. Voss Rd. Suite 600
Houston, TX 77057

Wesseler #28-2

Job Ticket: 61690

DST#: 1

ATTN: Terry McLeod

Test Start: 2015.06.15 @ 11:18:00

Tool Information

Drill Pipe:	Length: 4021.00 ft	Diameter: 3.80 inches	Volume: 56.40 bbl	Tool Weight: 2100.00 lb
Heavy Wt. Pipe:	Length: 0.00 ft	Diameter: inches	Volume: 0.00 bbl	Weight set on Packer: 25000.00 lb
Drill Collar:	Length: 245.00 ft	Diameter: 2.25 inches	Volume: 1.20 bbl	Weight to Pull Loose: 85000.00 lb
			<u>Total Volume: 57.60 bbl</u>	Tool Chased 0.00 ft
Drill Pipe Above KB:	28.50 ft			String Weight: Initial 78000.00 lb
Depth to Top Packer:	4260.00 ft			Final 78000.00 lb
Depth to Bottom Packer:	ft			
Interval between Packers:	35.00 ft			
Tool Length:	57.50 ft			
Number of Packers:	2	Diameter: 6.75 inches		

Tool Comments:

Tool Description

Tool Description	Length (ft)	Serial No.	Position	Depth (ft)	Accum. Lengths
Change Over Sub	1.00			4238.50	
Shut In Tool	5.00			4243.50	
Hydraulic tool	5.00			4248.50	
Safety Joint	2.50			4251.00	
Packer	5.00			4256.00	22.50 Bottom Of Top Packer
Packer	4.00			4260.00	
Packer - Shale	0.00			4260.00	
Stubb	1.00			4261.00	
Perforations	2.00			4263.00	
Recorder	0.00	8357	Inside	4263.00	
Recorder	0.00	6751	Outside	4263.00	
Perforations	29.00			4292.00	
Bullnose	3.00			4295.00	35.00 Bottom Packers & Anchor

Total Tool Length: 57.50



**TRILOBITE
TESTING, INC**

DRILL STEM TEST REPORT

FLUID SUMMARY

Landmark Resources Inc.

S28-16s-34w Scott,KS

1616 S. Voss Rd. Suite 600
Houston, TX 77057

Wesseler #28-2

Job Ticket: 61690

DST#: 1

ATTN: Terry McLeod

Test Start: 2015.06.15 @ 11:18:00

Mud and Cushion Information

Mud Type: Gel Chem

Cushion Type:

Oil API:

22 deg API

Mud Weight: 9.00 lb/gal

Cushion Length:

ft

Water Salinity:

ppm

Viscosity: 50.00 sec/qt

Cushion Volume:

bbbl

Water Loss: 9.56 in³

Gas Cushion Type:

Resistivity: ohm.m

Gas Cushion Pressure:

psig

Salinity: 4900.00 ppm

Filter Cake: 1.00 inches

Recovery Information

Recovery Table

Length ft	Description	Volume bbl
245.00	GMCO 10g 15m 75o	1.205

Total Length: 245.00 ft Total Volume: 1.205 bbl

Num Fluid Samples: 0

Num Gas Bombs: 0

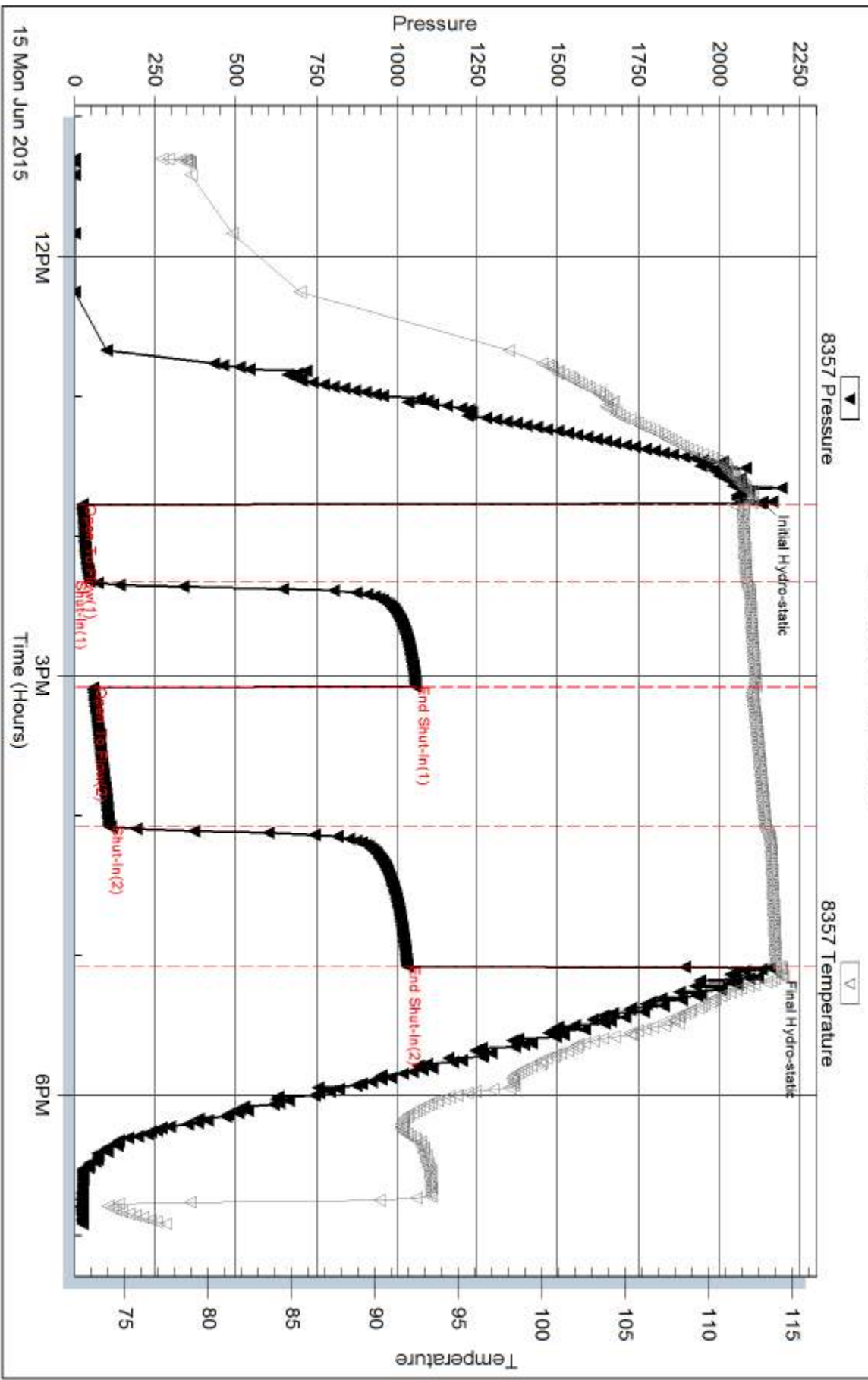
Serial #:

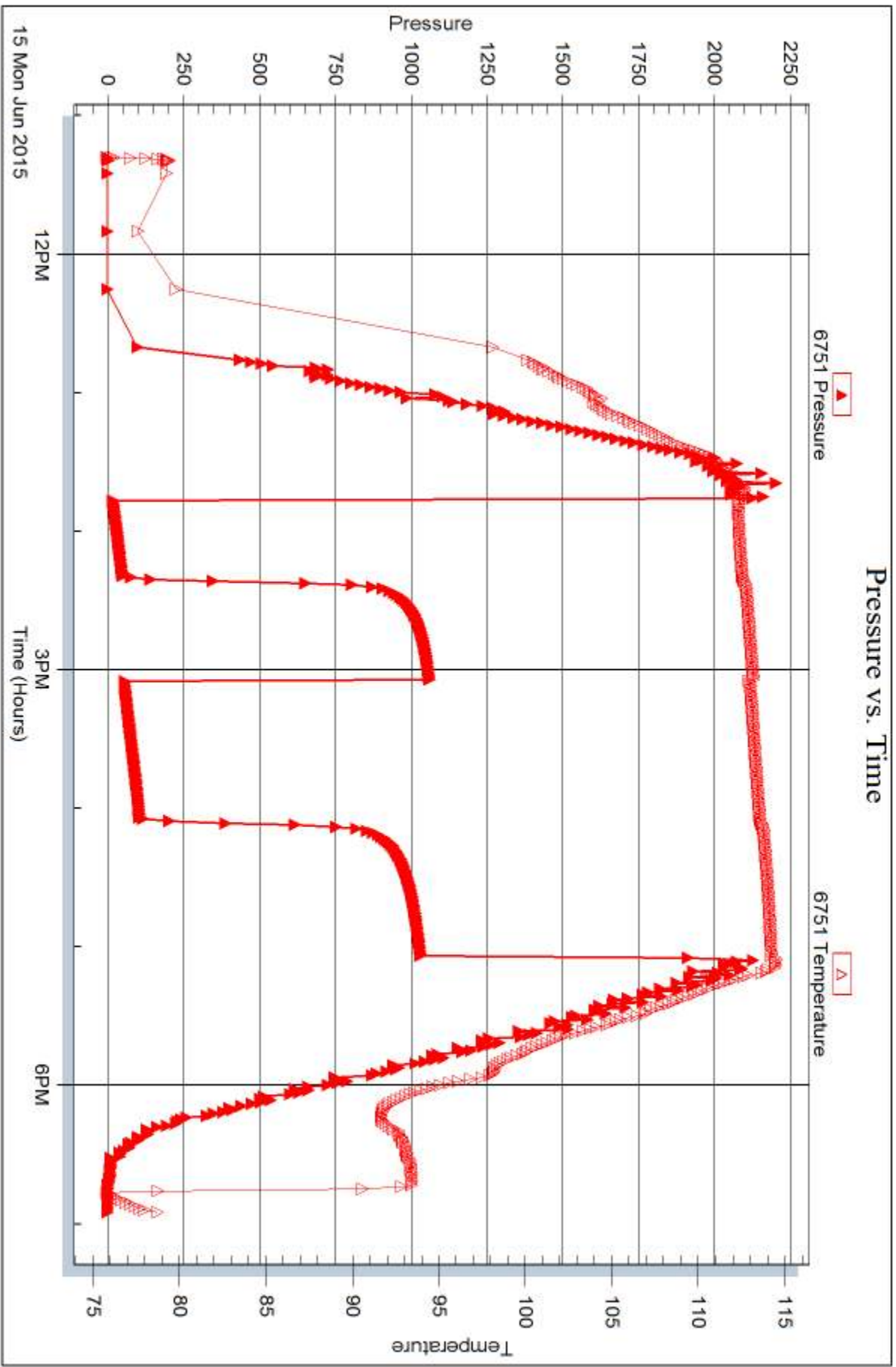
Laboratory Name:

Laboratory Location:

Recovery Comments: API: 26 @ 100 Degrees F = 22.

Pressure vs. Time







DRILL STEM TEST REPORT

Prepared For: **Landmark Resources Inc.**

1616 S. Voss Rd. Suite 600
Houston, TX 77057

ATTN: Terry McLeod

Wesseler #28-2

S28-16s-34w Scott,KS

Start Date: 2015.06.16 @ 12:40:00

End Date: 2015.06.16 @ 20:47:39

Job Ticket #: 61691 DST #: 2

Trilobite Testing, Inc
1515 Commerce Parkway Hays, KS 67601
ph: 785-625-4778 fax: 785-625-5620

Printed: 2015.06.19 @ 09:49:40



TRILOBITE TESTING, INC

DRILL STEM TEST REPORT

Landmark Resources Inc.

S28-16s-34w Scott,KS

1616 S. Voss Rd. Suite 600
Houston, TX 77057

Wesseler #28-2

Job Ticket: 61691

DST#: 2

ATTN: Terry McLeod

Test Start: 2015.06.16 @ 12:40:00

GENERAL INFORMATION:

Formation: **Marmaton**

Deviated: No Whipstock: ft (KB)

Time Tool Opened: 14:25:10

Time Test Ended: 20:47:39

Test Type: Conventional Bottom Hole (Reset)

Tester: Chuck Smith

Unit No: 61

Interval: 4467.00 ft (KB) To 4492.00 ft (KB) (TVD)

Reference Elevations: 3147.00 ft (KB)

Total Depth: 4492.00 ft (KB) (TVD)

3136.00 ft (CF)

Hole Diameter: 7.88 inches Hole Condition: Good

KB to GR/CF: 11.00 ft

Serial #: 8357

Inside

Press@RunDepth: 345.50 psig @ 4469.00 ft (KB)

Capacity: 8000.00 psig

Start Date: 2015.06.16

End Date:

2015.06.16

Last Calib.:

2015.06.16

Start Time: 12:40:02

End Time:

20:47:40

Time On Btm:

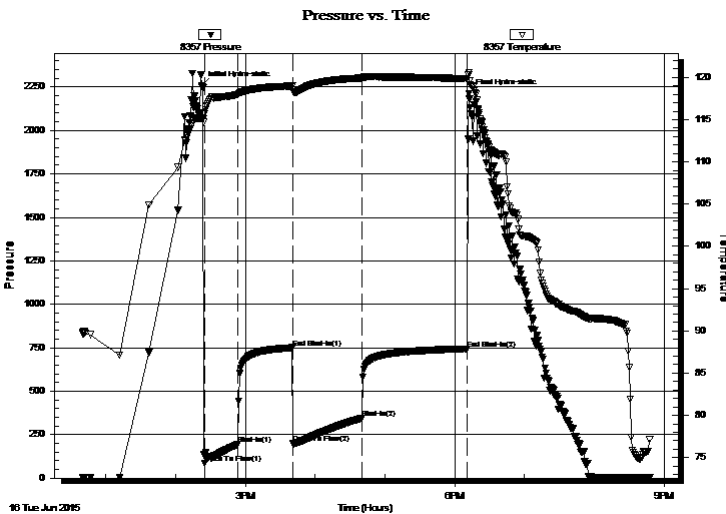
2015.06.16 @ 14:22:30

Time Off Btm:

2015.06.16 @ 18:12:09

TEST COMMENT: 30- B.O.B. @ 6 min.
45- 8" Return.
60- B.O.B. @ 10 min.
90- B.O.B. @ 34 min.

PRESSURE SUMMARY



Time (Min.)	Pressure (psig)	Temp (deg F)	Annotation
0	2258.23	115.16	Initial Hydro-static
3	85.61	115.73	Open To Flow (1)
32	194.88	118.00	Shut-In(1)
78	750.56	118.95	End Shut-In(1)
79	198.03	118.58	Open To Flow (2)
138	345.50	119.92	Shut-In(2)
229	744.19	119.83	End Shut-In(2)
230	2212.79	120.59	Final Hydro-static

Recovery

Length (ft)	Description	Volume (bbl)
0.00	496' GIP	0.00
61.00	GMCO 10g 10m 80o	0.30
990.00	GO 25g 75o	12.21

* Recovery from multiple tests

Gas Rates

Choke (inches)	Pressure (psig)	Gas Rate (Mcf/d)



**TRILOBITE
TESTING, INC**

DRILL STEM TEST REPORT

TOOL DIAGRAM

Landmark Resources Inc.

S28-16s-34w Scott,KS

1616 S. Voss Rd. Suite 600
Houston, TX 77057

Wesseler #28-2

Job Ticket: 61691

DST#: 2

ATTN: Terry McLeod

Test Start: 2015.06.16 @ 12:40:00

Tool Information

Drill Pipe:	Length: 4210.00 ft	Diameter: 3.80 inches	Volume: 59.06 bbl	Tool Weight: 2100.00 lb
Heavy Wt. Pipe:	Length: 0.00 ft	Diameter: inches	Volume: 0.00 bbl	Weight set on Packer: 25000.00 lb
Drill Collar:	Length: 245.00 ft	Diameter: 2.25 inches	Volume: 1.20 bbl	Weight to Pull Loose: 85000.00 lb
			<u>Total Volume: 60.26 bbl</u>	Tool Chased 0.00 ft
Drill Pipe Above KB:	10.50 ft			String Weight: Initial 80000.00 lb
Depth to Top Packer:	4467.00 ft			Final 82000.00 lb
Depth to Bottom Packer:	ft			
Interval between Packers:	25.00 ft			
Tool Length:	47.50 ft			
Number of Packers:	2	Diameter: 6.75 inches		

Tool Comments:

Tool Description

Tool Description	Length (ft)	Serial No.	Position	Depth (ft)	Accum. Lengths
Change Over Sub	1.00			4445.50	
Shut In Tool	5.00			4450.50	
Hydraulic tool	5.00			4455.50	
Safety Joint	2.50			4458.00	
Packer	5.00			4463.00	22.50 Bottom Of Top Packer
Packer	4.00			4467.00	
Packer - Shale	0.00			4467.00	
Stubb	1.00			4468.00	
Perforations	1.00			4469.00	
Recorder	0.00	8357	Inside	4469.00	
Recorder	0.00	6751	Outside	4469.00	
Perforations	20.00			4489.00	
Bullnose	3.00			4492.00	25.00 Bottom Packers & Anchor

Total Tool Length: 47.50



**TRILOBITE
TESTING, INC**

DRILL STEM TEST REPORT

FLUID SUMMARY

Landmark Resources Inc.

S28-16s-34w Scott,KS

1616 S. Voss Rd. Suite 600
Houston, TX 77057

Wesseler #28-2

Job Ticket: 61691

DST#: 2

ATTN: Terry McLeod

Test Start: 2015.06.16 @ 12:40:00

Mud and Cushion Information

Mud Type: Gel Chem

Cushion Type:

Oil API:

29 deg API

Mud Weight: 9.00 lb/gal

Cushion Length:

ft

Water Salinity:

ppm

Viscosity: 60.00 sec/qt

Cushion Volume:

bbbl

Water Loss: 7.96 in³

Gas Cushion Type:

Resistivity: ohm.m

Gas Cushion Pressure:

psig

Salinity: 4600.00 ppm

Filter Cake: 1.00 inches

Recovery Information

Recovery Table

Length ft	Description	Volume bbl
0.00	496' GIP	0.000
61.00	GMCO 10g 10m 80o	0.300
990.00	GO 25g 75o	12.211

Total Length: 1051.00 ft Total Volume: 12.511 bbl

Num Fluid Samples: 0

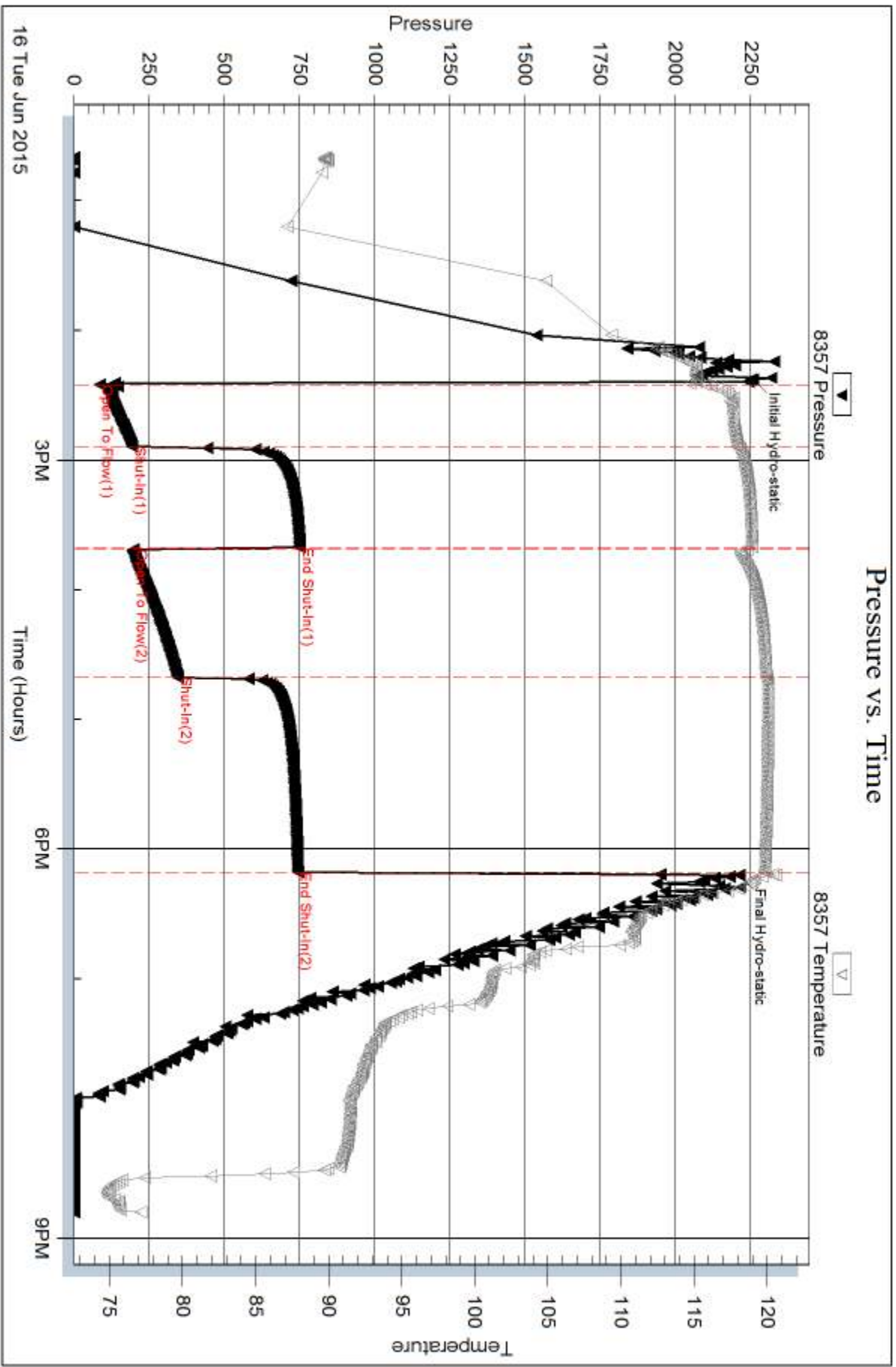
Num Gas Bombs: 0

Serial #:

Laboratory Name:

Laboratory Location:

Recovery Comments: API: 31 @ 80 Degrees F = 29.

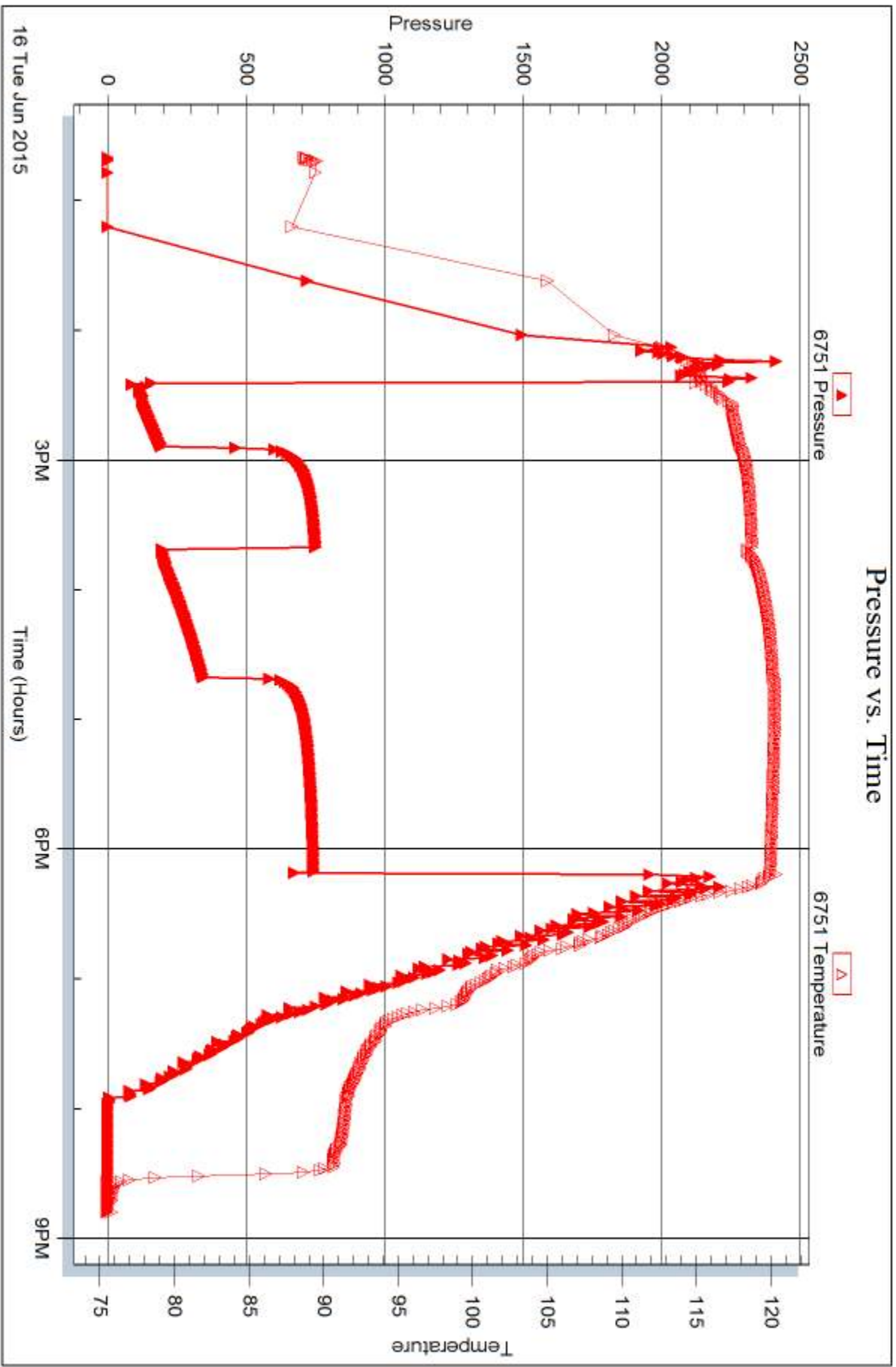


Serial #: 6751

Outside Landmark Resources Inc.

Wesseler #28-2

DST Test Number: 2





DRILL STEM TEST REPORT

Prepared For: **Landmark Resources Inc.**

1616 S. Voss Rd. Suite 600
Houston, TX 77057

ATTN: Terry McLeod

Wesseler #28-2

S28-16s-34w Scott,KS

Start Date: 2015.06.17 @ 05:10:00

End Date: 2015.06.17 @ 13:46:00

Job Ticket #: 61692 DST #: 3

Trilobite Testing, Inc
1515 Commerce Parkway Hays, KS 67601
ph: 785-625-4778 fax: 785-625-5620

Printed: 2015.06.19 @ 09:23:05



TRILOBITE TESTING, INC.

DRILL STEM TEST REPORT

Landmark Resources Inc.

S28-16s-34w Scott,KS

1616 S. Voss Rd. Suite 600
Houston, TX 77057

Wesseler #28-2

Job Ticket: 61692

DST#: 3

ATTN: Terry McLeod

Test Start: 2015.06.17 @ 05:10:00

GENERAL INFORMATION:

Formation: **Altamont**

Deviated: No Whipstock: ft (KB)

Time Tool Opened: 07:27:40

Time Test Ended: 13:46:00

Test Type: Conventional Bottom Hole (Reset)

Tester: Chuck Smith

Unit No: 61

Interval: 4492.00 ft (KB) To 4540.00 ft (KB) (TVD)

Reference Elevations: 3147.00 ft (KB)

Total Depth: 4540.00 ft (KB) (TVD)

3136.00 ft (CF)

Hole Diameter: 7.88 inches Hole Condition: Good

KB to GR/CF: 11.00 ft

Serial #: 8357

Inside

Press@RunDepth: 269.29 psig @ 4494.00 ft (KB)

Capacity: 8000.00 psig

Start Date: 2015.06.17

End Date:

2015.06.17

Last Calib.:

2015.06.17

Start Time: 05:10:02

End Time:

13:46:00

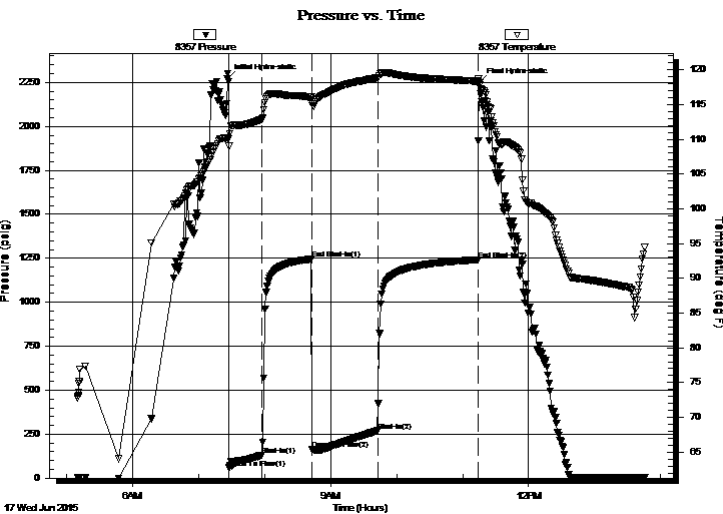
Time On Btm:

2015.06.17 @ 07:26:00

Time Off Btm:

2015.06.17 @ 11:15:20

TEST COMMENT: 30- B.O.B. @ 7 min.
45- B.O.B. @ 13 min.
60- B.O.B. @ 7 1/2 min.
90- B.O.B. @ 20 min.



PRESSURE SUMMARY

Time (Min.)	Pressure (psig)	Temp (deg F)	Annotation
0	2271.31	110.26	Initial Hydro-static
2	58.47	108.99	Open To Flow (1)
32	131.97	112.93	Shut-In(1)
77	1246.04	116.08	End Shut-In(1)
77	163.03	115.36	Open To Flow (2)
137	269.29	118.85	Shut-In(2)
228	1241.63	118.36	End Shut-In(2)
230	2249.13	117.92	Final Hydro-static

Recovery

Gas Rates

Length (ft)	Description	Volume (bbl)
0.00	2344' GIP	0.00
122.00	GMCO 30g 20m 50o	0.60
592.00	GO 30g 70o	7.18

	Choke (inches)	Pressure (psig)	Gas Rate (Mcf/d)

* Recovery from multiple tests



**TRILOBITE
TESTING, INC**

DRILL STEM TEST REPORT

TOOL DIAGRAM

Landmark Resources Inc.

S28-16s-34w Scott,KS

1616 S. Voss Rd. Suite 600
Houston, TX 77057

Wesseler #28-2

Job Ticket: 61692

DST#: 3

ATTN: Terry McLeod

Test Start: 2015.06.17 @ 05:10:00

Tool Information

Drill Pipe:	Length: 4240.00 ft	Diameter: 3.80 inches	Volume: 59.48 bbl	Tool Weight: 2100.00 lb
Heavy Wt. Pipe:	Length: 0.00 ft	Diameter: inches	Volume: 0.00 bbl	Weight set on Packer: 25000.00 lb
Drill Collar:	Length: 245.00 ft	Diameter: 2.25 inches	Volume: 1.20 bbl	Weight to Pull Loose: 90000.00 lb
			<u>Total Volume: 60.68 bbl</u>	Tool Chased 0.00 ft
Drill Pipe Above KB:	15.50 ft			String Weight: Initial 80000.00 lb
Depth to Top Packer:	4492.00 ft			Final 84000.00 lb
Depth to Bottom Packer:	ft			
Interval between Packers:	48.00 ft			
Tool Length:	70.50 ft			
Number of Packers:	2	Diameter: 6.75 inches		

Tool Comments:

Tool Description

Tool Description	Length (ft)	Serial No.	Position	Depth (ft)	Accum. Lengths
Change Over Sub	1.00			4470.50	
Shut In Tool	5.00			4475.50	
Hydraulic tool	5.00			4480.50	
Safety Joint	2.50			4483.00	
Packer	5.00			4488.00	22.50 Bottom Of Top Packer
Packer	4.00			4492.00	
Stubb	1.00			4493.00	
Packer - Shale	0.00			4493.00	
Perforations	1.00			4494.00	
Recorder	0.00	8357	Inside	4494.00	
Recorder	0.00	6751	Outside	4494.00	
Perforations	9.00			4503.00	
Change Over Sub	1.00			4504.00	
Drill Pipe	32.00			4536.00	
Change Over Sub	1.00			4537.00	
Bullnose	3.00			4540.00	48.00 Bottom Packers & Anchor
Total Tool Length:	70.50				



**TRILOBITE
TESTING, INC**

DRILL STEM TEST REPORT

FLUID SUMMARY

Landmark Resources Inc.

S28-16s-34w Scott,KS

1616 S. Voss Rd. Suite 600
Houston, TX 77057

Wesseler #28-2

Job Ticket: 61692

DST#: 3

ATTN: Terry McLeod

Test Start: 2015.06.17 @ 05:10:00

Mud and Cushion Information

Mud Type: Gel Chem

Cushion Type:

Oil API:

36 deg API

Mud Weight: 9.00 lb/gal

Cushion Length:

ft

Water Salinity:

ppm

Viscosity: 60.00 sec/qt

Cushion Volume:

bbbl

Water Loss: 8.78 in³

Gas Cushion Type:

Resistivity: ohm.m

Gas Cushion Pressure:

psig

Salinity: 6000.00 ppm

Filter Cake: 2.00 inches

Recovery Information

Recovery Table

Length ft	Description	Volume bbl
0.00	2344' GIP	0.000
122.00	GMCO 30g 20m 50o	0.600
592.00	GO 30g 70o	7.184

Total Length: 714.00 ft Total Volume: 7.784 bbl

Num Fluid Samples: 0

Num Gas Bombs: 0

Serial #:

Laboratory Name:

Laboratory Location:

Recovery Comments: API: 40 @ 100 Degrees F = 36.

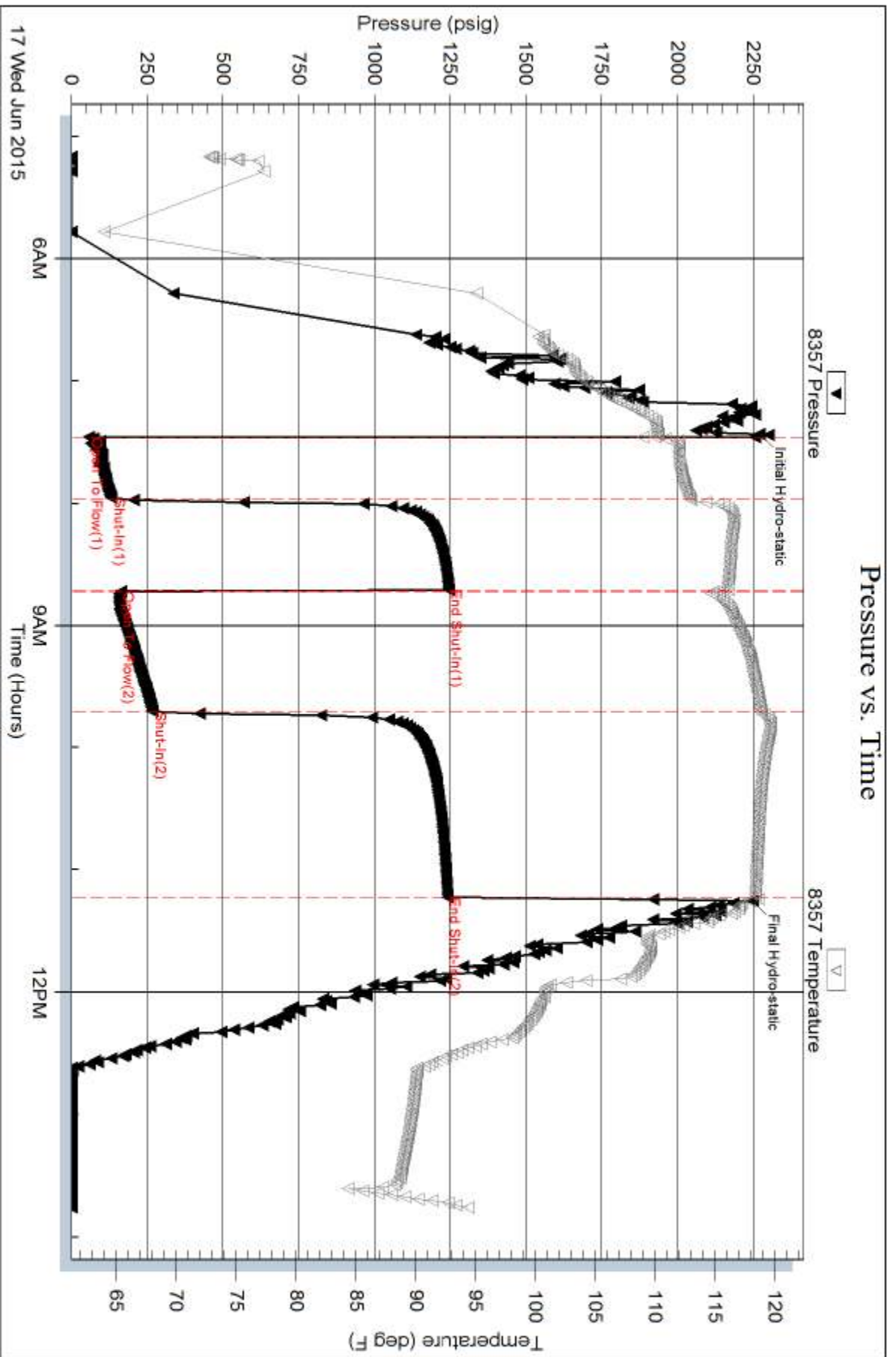
Serial #: 8357

Inside

Landmark Resources Inc.

Wesseler #28-2

DST Test Number: 3



Trilobite Testing, Inc

Ref. No: 61692

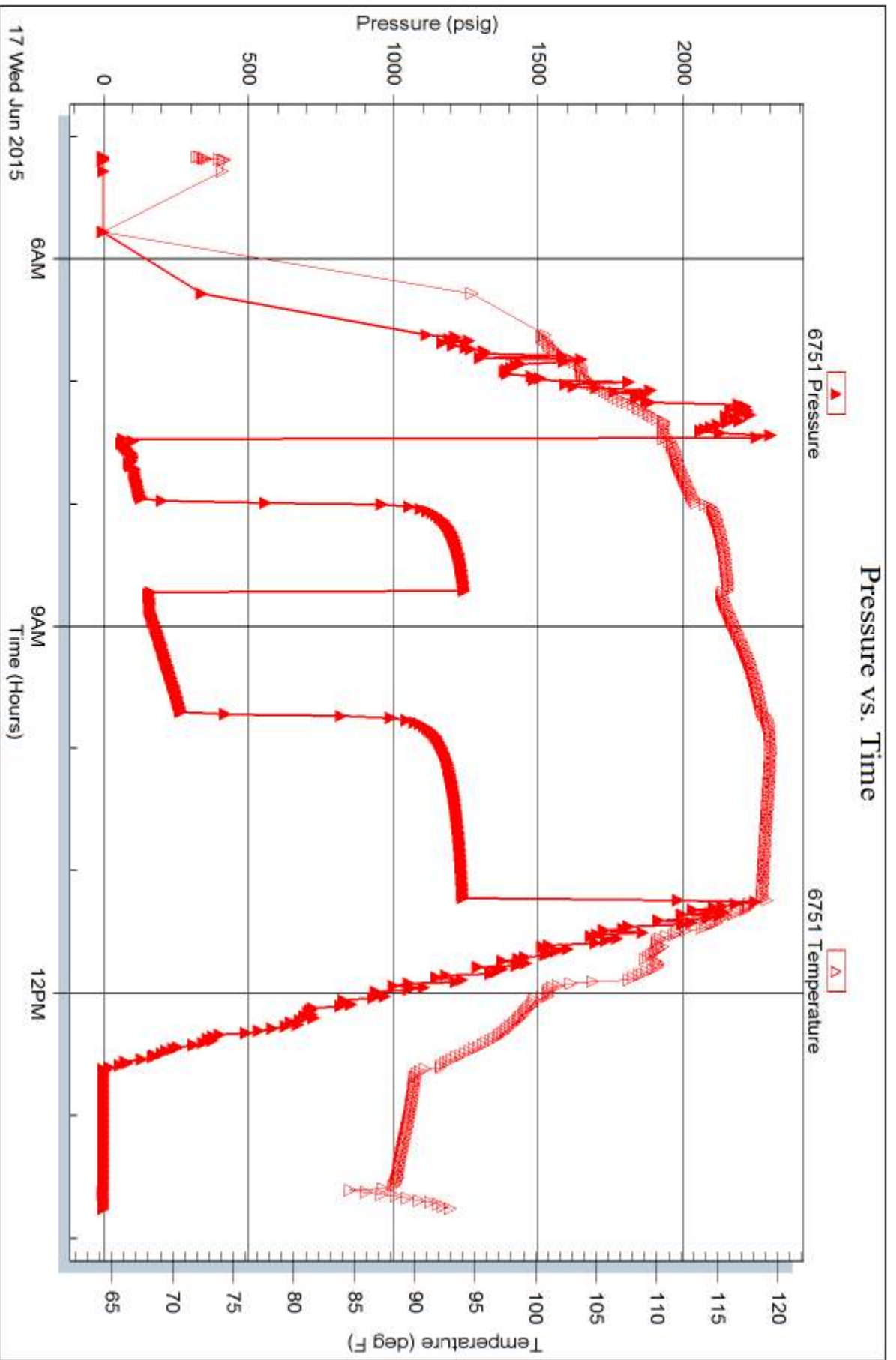
Printed: 2015.06.19 @ 09:23:07

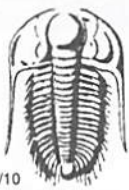
Serial #: 6751

Outside Landmark Resources Inc.

Wesseler #28-2

DST Test Number: 3





TRILOBITE TESTING INC.

1515 Commerce Parkway • Hays, Kansas 67601

Test Ticket

NO. 61690 22495

Well Name & No. Wesseler #2-28 Test No. 1 Date 6-15-15
 Company Landmark Resources Inc. Elevation 3147 KB 3136 GL
 Address 1616 & Voss Rd STE 600 Houston, TX 77057
 Co. Rep / Geo. Terry McLeod Rig MDC #21
 Location: Sec. 28 Twp. 16s Rge. 34w Co. Scott State Ks

Interval Tested 4260-4295 Zone Tested LKC 'I'
 Anchor Length 35 Drill Pipe Run 4021 Mud Wt. 9.3
 Top Packer Depth 4256 Drill Collars Run 245 Vis 50
 Bottom Packer Depth 4260 Wt. Pipe Run 0 WL 9.6
 Total Depth 4295 Chlorides 4900 ppm System LCM 2[#]
 Blow Description 3' Blow
No return.
Surface blow.
No return.

Rec	Feet of	%gas	%oil	%water	%mud
Rec <u>245</u>	Feet of <u>6 MCO</u>	<u>10</u>	<u>75</u>	<u>15</u>	<u>15</u>
Rec	Feet of	%gas	%oil	%water	%mud
Rec	Feet of	%gas	%oil	%water	%mud
Rec	Feet of	%gas	%oil	%water	%mud

Rec Total 245 BHT 114 Gravity 22 API RW @ _____ °F Chlorides _____ ppm

(A) Initial Hydrostatic 2134 Test 1150 T-On Location 9:45
 (B) First Initial Flow 25 Jars _____ T-Started 11:18
 (C) First Final Flow 47 Safety Joint 75 T-Open 13:45
 (D) Initial Shut-In 1058 Circ Sub NIC T-Pulled 17:05
 (E) Second Initial Flow 58 Hourly Standby _____ T-Out 18:55
 (F) Second Final Flow 107 Mileage 50 RT 50
 (G) Final Shut-In 1031 Sampler _____
 (H) Final Hydrostatic 2157 Straddle _____
 Ruined Shale Packer _____
 Ruined Packer _____
 Extra Copies _____
 Initial Open 30 Shale Packer 250
 Initial Shut-In 45 Extra Packer _____
 Final Flow 60 Extra Recorder _____
 Final Shut-In 60 Day Standby _____
 Accessibility _____
 Sub Total 1525 Sub Total 1525
 Total 1525 MP/DST Disc't _____

Approved By Terry L. McLeod

Our Representative Chuck Amick

Trilobite Testing Inc. shall not be liable for damaged of any kind of the property or personnel of the one for whom a test is made, or for any loss suffered or sustained, directly or indirectly, through the use of its equipment, or its statements or opinion concerning the results of any test, tools lost or damaged in the hole shall be paid for at cost by the party for whom the test is made.



TRILOBITE TESTING INC.

1515 Commerce Parkway • Hays, Kansas 67601

Test Ticket

NO. 61691

Well Name & No. Wesseler #2-28 Test No. 2 Date 6-16-15
 Company Landmark Resources Inc. Elevation 3147 KB 3136 GL
 Address 1616 & Voss Rd. STE 600 Houston, TX 77057
 Co. Rep / Geo. Terry McLeod Rig M.D.C. #21
 Location: Sec. 28 Twp. 16s Rge. 34w Co. Scott State KS

Interval Tested 4467-4492 Zone Tested Marmaton
 Anchor Length 25 Drill Pipe Run 4210 Mud Wt. 9.3
 Top Packer Depth 4463 Drill Collars Run 245 Vis 60
 Bottom Packer Depth 4467 Wt. Pipe Run 0 WL 8.0
 Total Depth 4492 Chlorides 4600 ppm System LCM 2"
 Blow Description B.O.B. @ 6 min.
8" Return.
B.O.B. @ 10 min.
B.O.B. @ 34 min.

Rec	Feet of	%gas	%oil	%water	%mud
Rec <u>990</u>	Feet of <u>60</u>	<u>25</u> %gas	<u>75</u> %oil	%water	%mud
Rec <u>61</u>	Feet of <u>EMCO</u>	<u>10</u> %gas	<u>80</u> %oil	%water	<u>10</u> %mud
Rec	Feet of <u>496' GIP</u>	%gas	%oil	%water	%mud
Rec	Feet of	%gas	%oil	%water	%mud

Rec Total 1051 BHT 120 Gravity 29 API RW @ °F Chlorides ppm
 (A) Initial Hydrostatic 2258 Test 1150 T-On Location 12:25
 (B) First Initial Flow 86 Jars T-Started 12:40
 (C) First Final Flow 195 Safety Joint 75 T-Open 14:25
 (D) Initial Shut-In 751 Circ Sub NIC T-Pulled 18:11
 (E) Second Initial Flow 198 Hourly Standby T-Out 20:48
 (F) Second Final Flow 346 Mileage SDRT 50 Comments
 (G) Final Shut-In 744 Sampler
 (H) Final Hydrostatic 2213 Straddle
 Shale Packer 250 Ruined Shale Packer
 Extra Packer Ruined Packer
 Extra Recorder Extra Copies
 Sub Total 0
 Total 1525
 MP/DST Disc't
 Sub Total 1525

Initial Open 30
 Initial Shut-In 45
 Final Flow 60
 Final Shut-In 90
 Approved By Terry McLeod Our Representative Chuck Smith

Trilobite Testing Inc. shall not be liable for damaged of any kind of the property or personnel of the one for whom a test is made, or for any loss suffered or sustained, directly or indirectly, through the use of its equipment, or its statements or opinion concerning the results of any test, tools lost or damaged in the hole shall be paid for at cost by the party for whom the test is made.



TRILOBITE TESTING INC.

1515 Commerce Parkway • Hays, Kansas 67601

Test Ticket

NO. 61692

Well Name & No. Wesseler #2-28 Test No. 3 Date 6-17-15
 Company Landmark Resources Inc. Elevation 3147 KB 3136 GL
 Address 11616 & Voss Rd. STE 600 Houston, TX 77057
 Co. Rep / Geo. Terry McLeod Rig M.D.C. #21
 Location: Sec. 28 Twp. 16s Rge. 34w Co. Scott State KS

Interval Tested 4492-4540 Zone Tested Altamont
 Anchor Length 48 Drill Pipe Run 4240 Mud Wt. 9.1
 Top Packer Depth 4488 Drill Collars Run 245 Vis 60/72
 Bottom Packer Depth 4492 Wt. Pipe Run 0 WL 8.8
 Total Depth 4540 Chlorides 6000 ppm System LCM 2"
 Blow Description B.O.B. @ 7 min.
B.O.B. @ 13 min.
B.O.B. @ 7 1/2 min.
B.O.B. @ 20 min.

Rec	Feet of	%gas	%oil	%water	%mud
<u>592</u>	<u>60</u>	<u>30</u>	<u>70</u>		
<u>122</u>	<u>GMCO</u>	<u>30</u>	<u>50</u>		<u>20</u>
	<u>2344' GIP</u>	<u>100</u>			

Rec Total 714 BHT 118 Gravity 36 API RW @ _____ °F Chlorides _____ ppm
 (A) Initial Hydrostatic 2271 Test 1150 T-On Location 5:08
 (B) First Initial Flow 58 Jars _____ T-Started 5:10
 (C) First Final Flow 132 Safety Joint 75 T-Open 7:28
 (D) Initial Shut-In 1246 Circ Sub NIC T-Pulled 11:14
 (E) Second Initial Flow 163 Hourly Standby _____ T-Out 13:46
 (F) Second Final Flow 269 Mileage 50RT x 2 50
 (G) Final Shut-In 1242 Sampler _____ 50
 (H) Final Hydrostatic 2249 Straddle _____
 Shale Packer 250 Ruined Shale Packer _____
 Extra Packer _____ Ruined Packer _____
 Extra Recorder _____ Extra Copies _____
 Day Standby _____ Sub Total 0
 Accessibility _____ Total 1575
 Sub Total 1575 MP/DST Disc't _____

Initial Open 30
 Initial Shut-In 45
 Final Flow 60
 Final Shut-In 90

Approved By Terry McLeod Our Representative Chuck Smith

TriLOBITE TESTING INC. shall not be liable for damaged of any kind of the property or personnel of the one for whom a test is made, or for any loss suffered or sustained, directly or indirectly, through the use of its equipment, or its statements or opinion concerning the results of any test, tools lost or damaged in the hole shall be paid for at cost by the party for whom the test is made.