

# MUD LOG

## WellSight Systems

Scale 1:240 (5"=100') Imperial  
Measured Depth Log

Well Name: Alexander "O" #2-33  
UWI: 15081221040000  
Location: 33-T27S-R34W

License Number:  
Spud Date: 5/3/2015  
Surface Coordinates:

Region:  
Drilling Completed:

### Bottom Hole

### Coordinates:

Ground Elevation (ft): 3067  
Logged Interval (ft): 5000  
Formation:

K.B. Elevation (ft): 3079  
Total Depth (ft): 5510

### Type of Drilling Fluid:

Printed by MUD.LOG from WellSight Systems 1-800-447-1534 www.WellSight.com

## OPERATOR

Company: Berexco LLC  
Address: 2601 NW Expressway, Ste 1100E OKC, OK

## GEOLOGIST

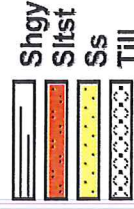
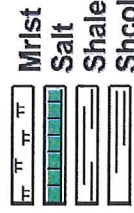
Name: Wade Condict  
Company: Berexco LLC  
Address:

## Cores

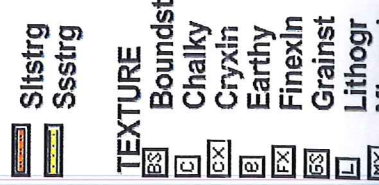
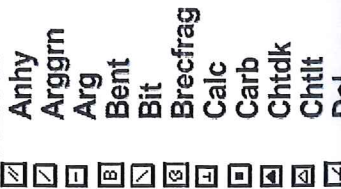
## DSTs

## Comments

## ROCK TYPES



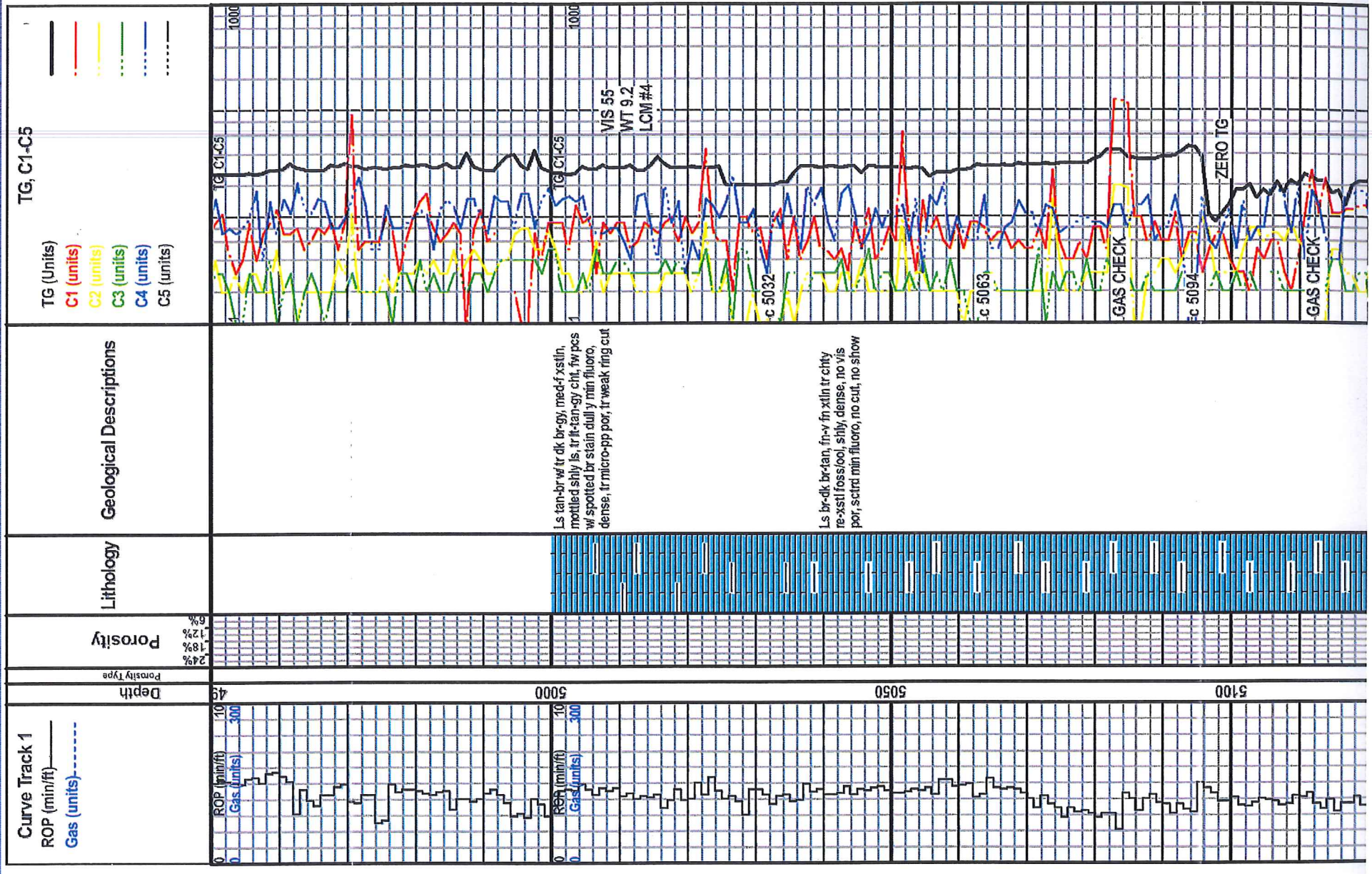
## MINERAL

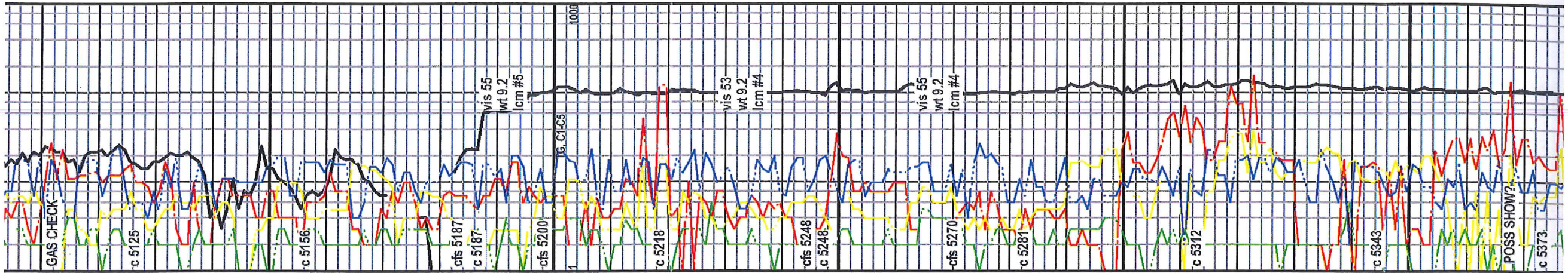


- Calc
- Carb
- Chtdk
- Chtlt
- Dol
- Feldspar
- Ferrpel
- Ferr
- Glau
- Pyr
- Salt
- Sandy
- Silt
- Sil
- Sulphur
- Tuff
- Cephal
- Coral
- Crin
- Echin
- Fish
- Foram
- Fossil
- Gastro
- Oolite
- Stringer
- Anhy
- Arg
- Bent
- Coal
- Dol
- Gyp
- Ls
- Mrst
- Earthy
- Finexln
- Grainst
- Lithogr
- Microxln
- Mudst
- Packst
- Wackest

**OTHER SYMBOLS**

- Vuggy
- Earthy
- Fenest
- Fracture
- Inter
- Moldic
- Organic
- Pinpoint
- ROUNDED
- Rounded
- Subrnd
- Subang
- Angular
- OIL SHOW
- Even
- Spotted
- Ques
- Dead
- INTERVAL
- Core
- Dst
- EVENT
- Rft
- Sidewall





**Morrow**  
5136 (-2057)

**Red Zone**  
5184 (-2105)

Ls tn-br-dk br, mttld dk br, fr-vf w/ tr med xstn, abnd foss, loose foss, abnd poor-fr intrxstn por, prob yug por, fr-gd w/ tr ex strm cut, no odor

**Blue Zone**  
5204 (-2125)

Ls, lt-tn to br w/ spnd dk br to blk, intbd, shly strks, mstly dead oil stn, abnd foss frag, minor chlk, vf-xstn w/ tr med, bright y-grm fluoro, fr-pr intrxstn por w/ tr ex vug, int odor, tr gd strm cut

**Yellow Zone**  
5226 (-2147)

AA

**Green Zone**  
5245 (-2166)

Ss gy-dk gy, qtz, spnd brwn oil stn, clay fill ip, calc cement, abnd pyrite, sub-ang, fr sort, tr pr-fr intrgrm por, ?ble perm, sectd gold fluoro, int odor, good-strm cut, abnd loose gms

**Purple Zone**  
5271 (-2192)

Ls dk gy, vry-xtrly oolitic, silty/sily matrix, tr poor intrgrm mtrx por, few pcs w/ dull y/fluoro, no cut, no show

**Brown Zone**  
5292 (-2213)

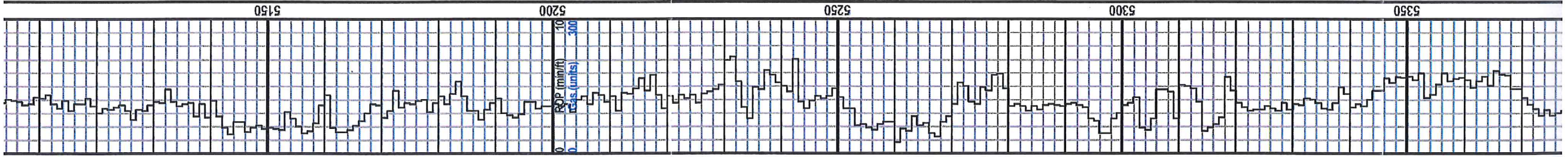
Ss vf-fr gr, clay fill ip, calc cement, brwn from spotted to even oil stn, fair intrgrm por w/ tr gd, yl-grm fluoro, exci strm to flush cut, ssfo, xtmly friable

**Chester**  
5320 (-2241)

Ls, lt tn-br, abnd introfrctr fill pyr, minor chlk, tr fr-gd intrxstl por, yl fluoro, few pcs w/ ring cut

Ls gy-dk gy, crypto to vvf xstn, minor foss frag, fr micro-pp w/ tr intrgrm por, no cut, no show

Ls, few pcs sandy ls, dull yellow fluoro, wk strm to ring cut, no odor, no sfo



GAS CHECK

c 5125

c 5156

cfs 5187

c 5187

cfs 5200

1

c 5218

cfs 5248

c 5248

cfs 5270

c 5281

c 5312

c 5343

POSS SHOW?

c 5373

5200

5250

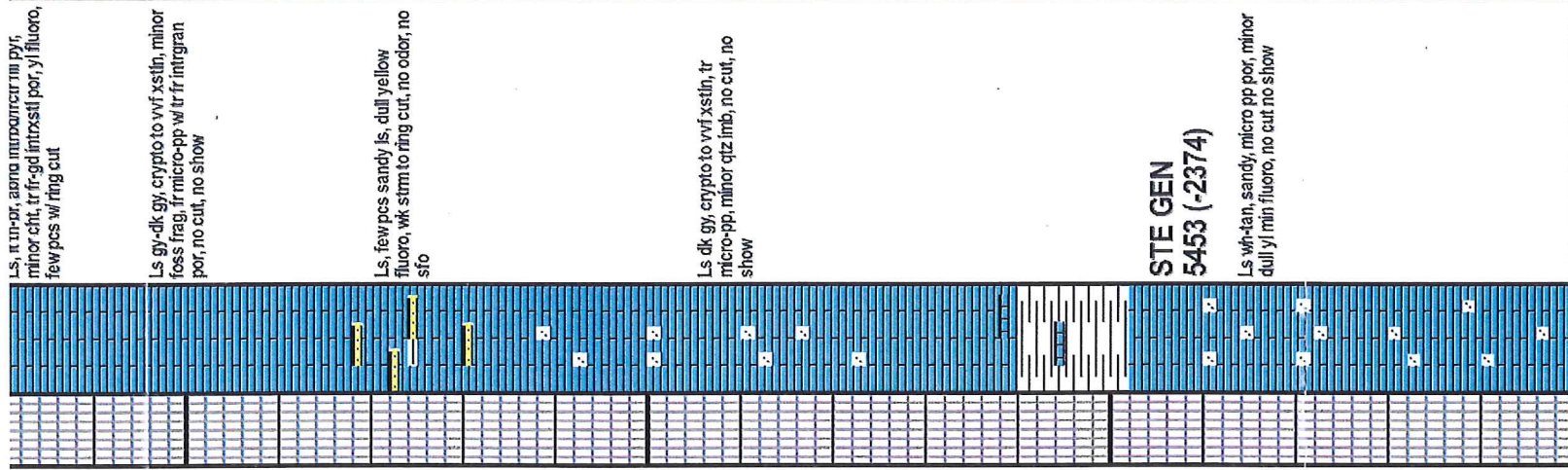
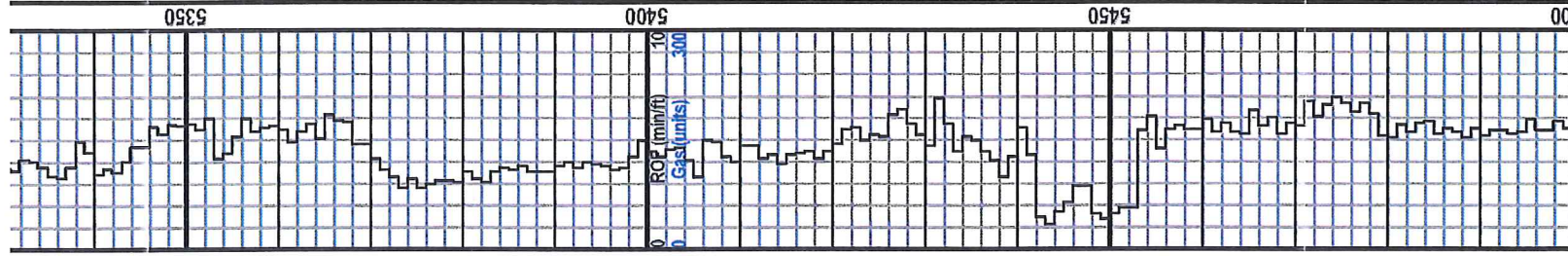
5300

5350

ROP (min/ft)

0 10 300

0 10 300



Ls, dk gy, crypto to vvf xstln, tr micro-pp, minor qtz imb, no cut, no show

**STE GEN  
5453 (-2374)**

Ls, w-han, sandy, micro pp por, minor dull y/ min fluoro, no cut no show

Ls, dk gy, crypto to vvf xstln, tr micro-pp, minor qtz imb, no cut, no show

Ls, few pcs sandy ls, dull yellow fluoro, wk stlm to ring cut, no odor, no sfo

Ls, gy-dk gy, crypto to vvf xstln, minor foss frag, fr micro-pp w/ tr fr intgran por, no cut, no show

Ls, it tr-or, azona nuroccur in pyf, minor chrt, tr fr-gd intrxstl por, y/ fluoro, few pcs w/ ring cut

