



Joshua R. Austin

Petroleum Geologist

report for

Lebsack Oil Production, Inc.



COMPANY: LEBSACK OIL PRODUCTION INC.

LEASE: Bensch #3

FIELD: GROVE

SURFACE LOCATION: S2-N2-NW-SE (3050' FNL & 1980' FEL)

SEC: 33 TWSP: 20s RGE: 10w

COUNTY: RICE STATE: KANSAS

KB: 1732' GL: 1721'

API # 15-159-22824-0000

CONTRACTOR: STERLING DRILLING COMPANY (Rig #4)

Spud: 07/20/2015

Comp: 07/26/2015

RTD: 3117'

LTD: N/A

Mud Up: 2639'

Type Mud: Chemical was displaced

Samples Saved From: 2700-2800'

Geological Supervision From: 2775-RTD

Geologist on Well: Josh Austin

Surface Casing: 8 5/8" @ 265'

Production Casing: 5 1/2" @ 3115'






NOTES

On the basis of the structural position 5 1/2" production casing was set and cemented on the Bensch #3 at the rotary total depth 3117' to further test the Lansing 'F' and 'D' zones in the Kansas City. No Samples recorded past 2800' due to no returns. There was no drill stem test or electric logs ran. LOST ALL RETURNS AT 2798' AND DRILLED WITH NO RETURNS TO RTD 3117'

Lebsack Oil Production Inc.
well comparison sheet




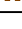
DRILLING WELL					COMPARISON WELL				COMPARISON WELL			
Bensch 3					Bensch 2				Bensch 1			
1732 KB					1730 KB		Structural Relationship		1730 KB		Structural Relationship	
Formation	Sample	Sub-Sea	Log	Sub-Sea	Log	Sub-Sea	Sample	Log	Log	Sub-Sea	Sample	Log
Heebner	2840	-1108	N/A	N/A	2839	-1109	1	N/A	2834	-1104	-4	N/A
Douglas	2867	-1135	N/A	N/A	2867	-1137	2	N/A	2861	-1131	-4	N/A
Brown Lime	2976	-1244	N/A	N/A	2976	-1246	2	N/A	2970	-1240	-4	N/A
Lansing	2994	-1262	N/A	N/A	2992	-1262	0	N/A	2986	-1256	-6	N/A
"F" Zone	3080	-1348	N/A	N/A	3077	-1347	-1	N/A	3070	-1340	-8	N/A
Total Depth	3117	-1385	N/A	N/A	3363	-1633			3377	-1647		

ROCK TYPES

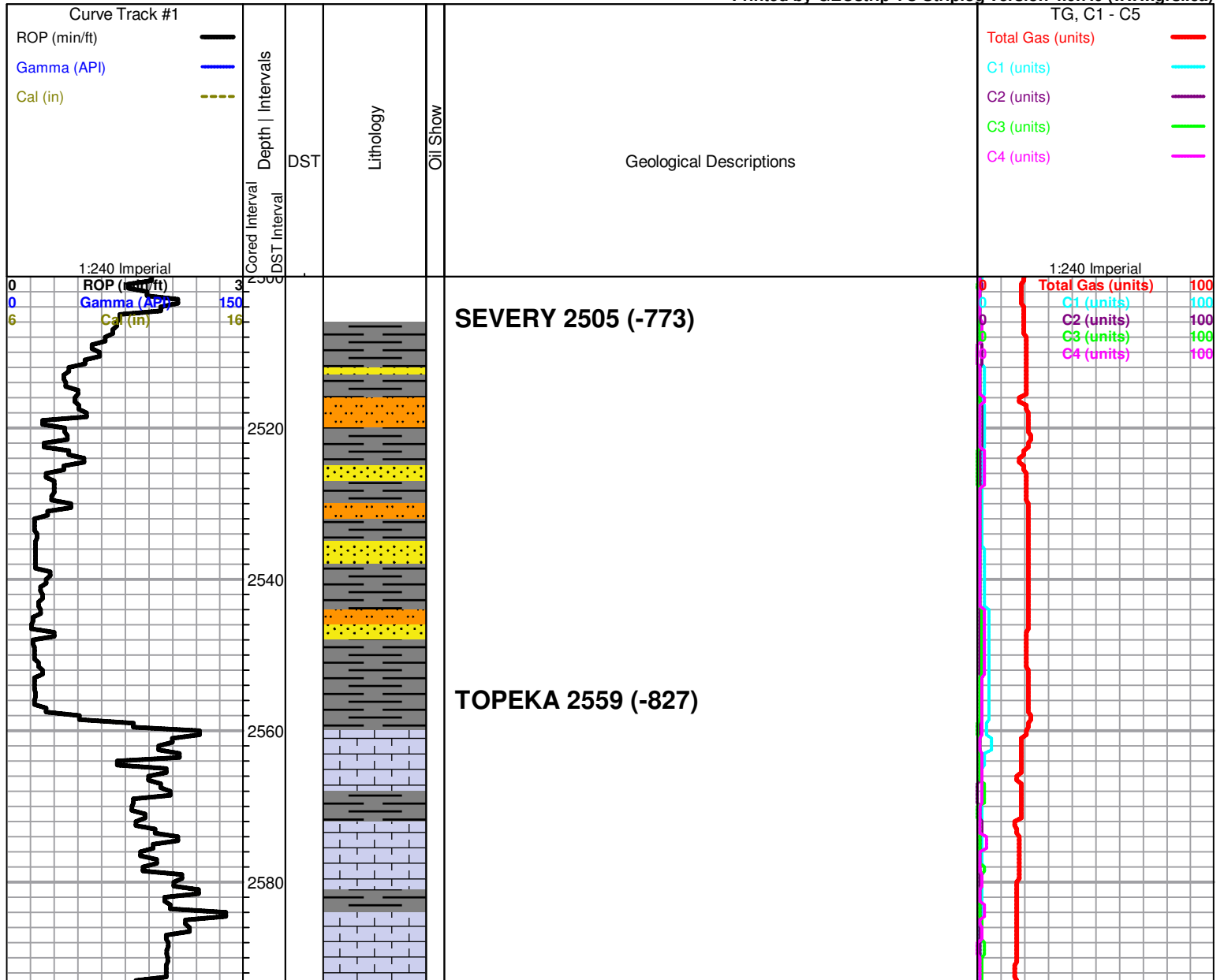
 Lmst fw7> shale, gry	 Carbon Sh	 Slst
 shale, gry	 Ss	

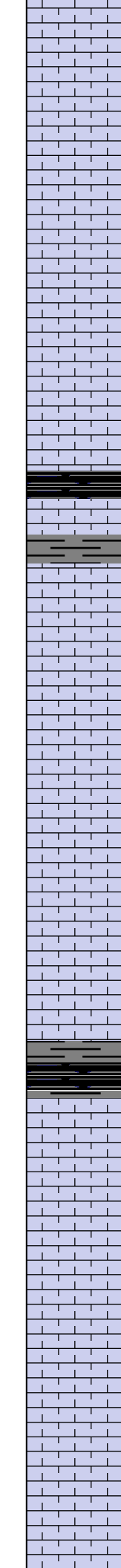
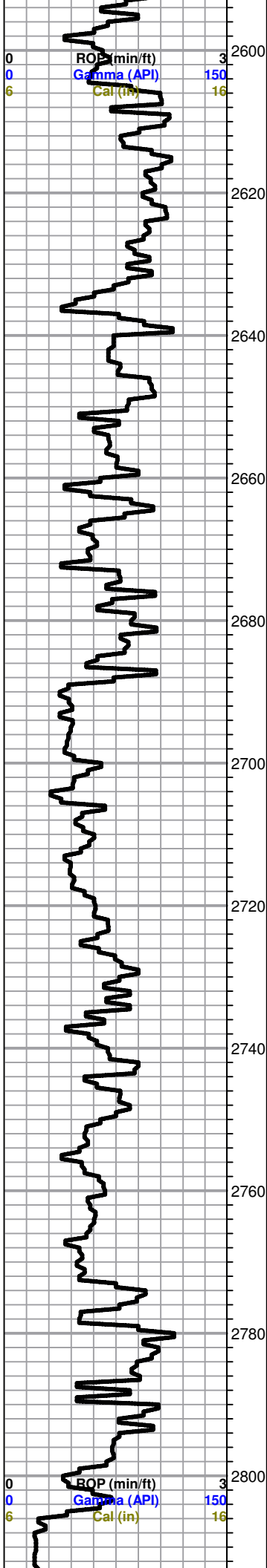
OTHER SYMBOLS

DST

-  DST Int
-  DST alt
-  Core
-  tail pipe

Printed by GEOstrip VC Striplog version 4.0.7.0 (www.grsi.ca)





Displaced mud system at 2639'.

Wet and Dry Samples 2700-2800'

Limestone; cream-buff, oolitic in part, granular, few scattered porosity, no shows

Limestone; cream-lt.grey, fine-medium xln, fossiliferous-oolitic, poorly developed porosity, trace grey boney Chert

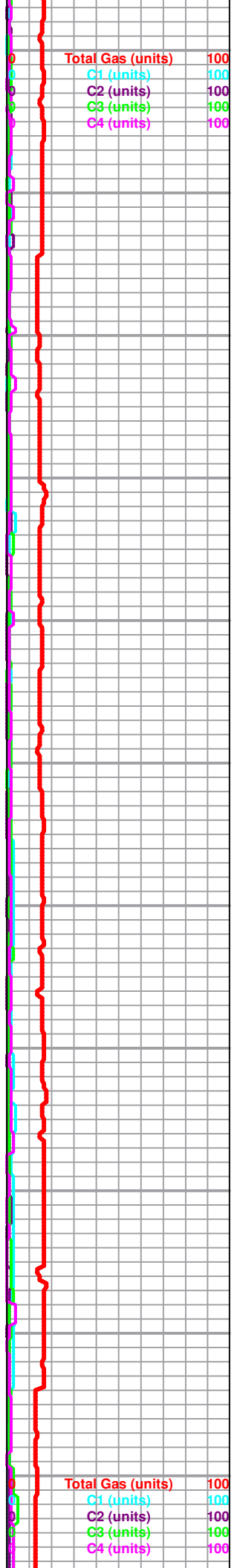
Shale; dark grey, plus trace black carboniferous Shale

Limestone; cream-tan, fossiliferous-oolitic, chalky, fossil cast type porosity, no shows

Limestone; buff-cream, fine xln, chalky, fossiliferous in part, dense, poor porosity, plus grey boney Chert

Lost all returns at 2798'

Lost returns. Pump mud. No returns. Pull 10 stands. Pump LCM mud. Have 100% returns. Stage to bottom. Hit bridge and lost returns. Pull 4 stands. Add LCM mud. Have 100% returns. (1 stand. Add LCM mud. Have 100% returns.)



2820
2840
2860
2880
2900
2920
2940
2960
2980
3000
3020

100% returns (1st returns are salt water cut). Stage back to bottom. Bridges 40' off bottom. Reaming bridge at 15' off bottom and lose returns.

HEEBNER 2840 (-1108)

TORONTO 2855 (-1123)

Spot 80 bbl of 20# bbl LCM pill and pull 10 stands off bottom and wait to let hole heal.

DOUGLAS 2867 (-1135)

NO SAMPLES FROM 2800'-RTD

Filled pits, 500 bbl frac tank and premix with mud.

Drilling with no returns

BROWN LIME 2976 (-1244)

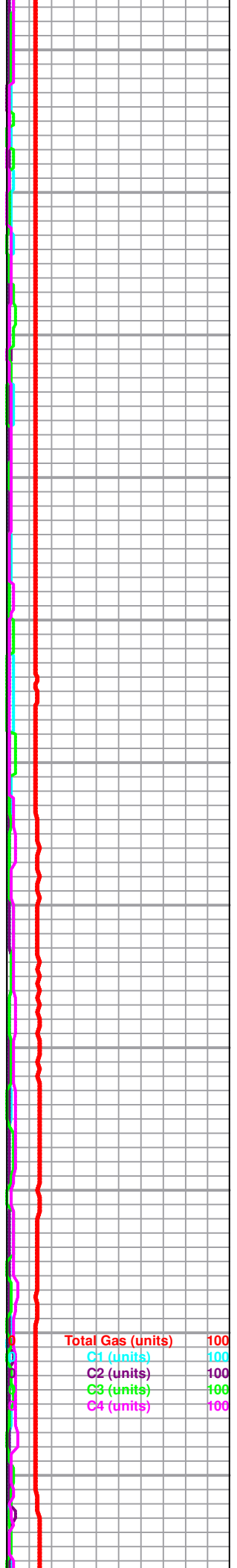
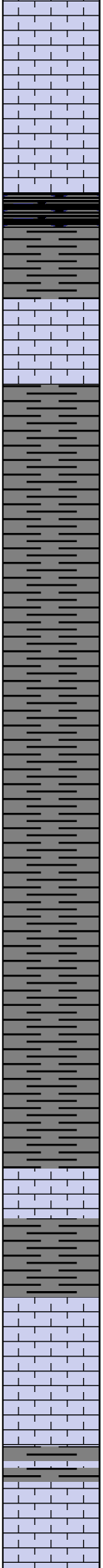
LANSING 2994 (-1262)

Drilling with no returns

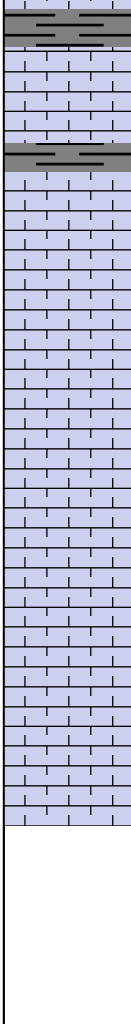
adding water to mud

ROP (min) 3
Gamma (API) 150
C (min) 16

Total Gas (units) 100
C1 (units) 100
C2 (units) 100
C3 (units) 100
C4 (units) 100



3040
3060
3080
3100
3120



LANSING 'D' ZONE 3052 (-1320)

Drilling with no returns

LANSING 'F' ZONE 3080 (-1348)

Blind drilled to RTD 3117'

ROTARY TOTAL DEPTH 3117 (-1385)

