

## CEMENT BOND LOG

Company **MIKE KELSO OIL, INC.**  
 Well **PIERCE #4**  
 Field **COOPER**  
 County **GRAHAM** State **KANSAS**

Location **SW-NE-NW-NE  
500' FNL & 1950' FEL**  
 SEC. **23** TWP. **10S** RGE. **21W**  
 Permanent Datum **GROUND LEVEL** Elevation **2188**  
 Log Measured From **KELLY BUSHING 7' AGL**  
 Drilling Measured From **KELLY BUSHING**  
 Other Services  
 Elevation  
 K.B. 2195  
 D.F.  
 G.L. 2188

Date	09-01-2015		09-01-2015				
Run Number	ONE		ONE				
Depth Driller	3809						
Depth Logger	3781		1800				
Bottom Logged Interval	3780		1799				
Top Log Interval	2000		380				
Open Hole Size	WATER		WATER				
Type Fluid	WATER		WATER				
Density / Viscosity							
Max. Recorded Temp.							
Estimated Cement Top	2204						
Time Well Ready							
Time Logger on Bottom							
Equipment Number	52						
Location	GREAT BEND						
Recorded By	LEE BRETZ						
Witnessed By	MR. CURTIS KELSO						
Borehole Record							
Run Number	Bit	From	To	Size	Weight	From	To
Casing Record	Size	Wgt/Ft		Top	Bottom		
Surface String	8.625			0	314		
Prot. String							
Production String	5.5			0			
Liner							

<<< Fold Here >>>

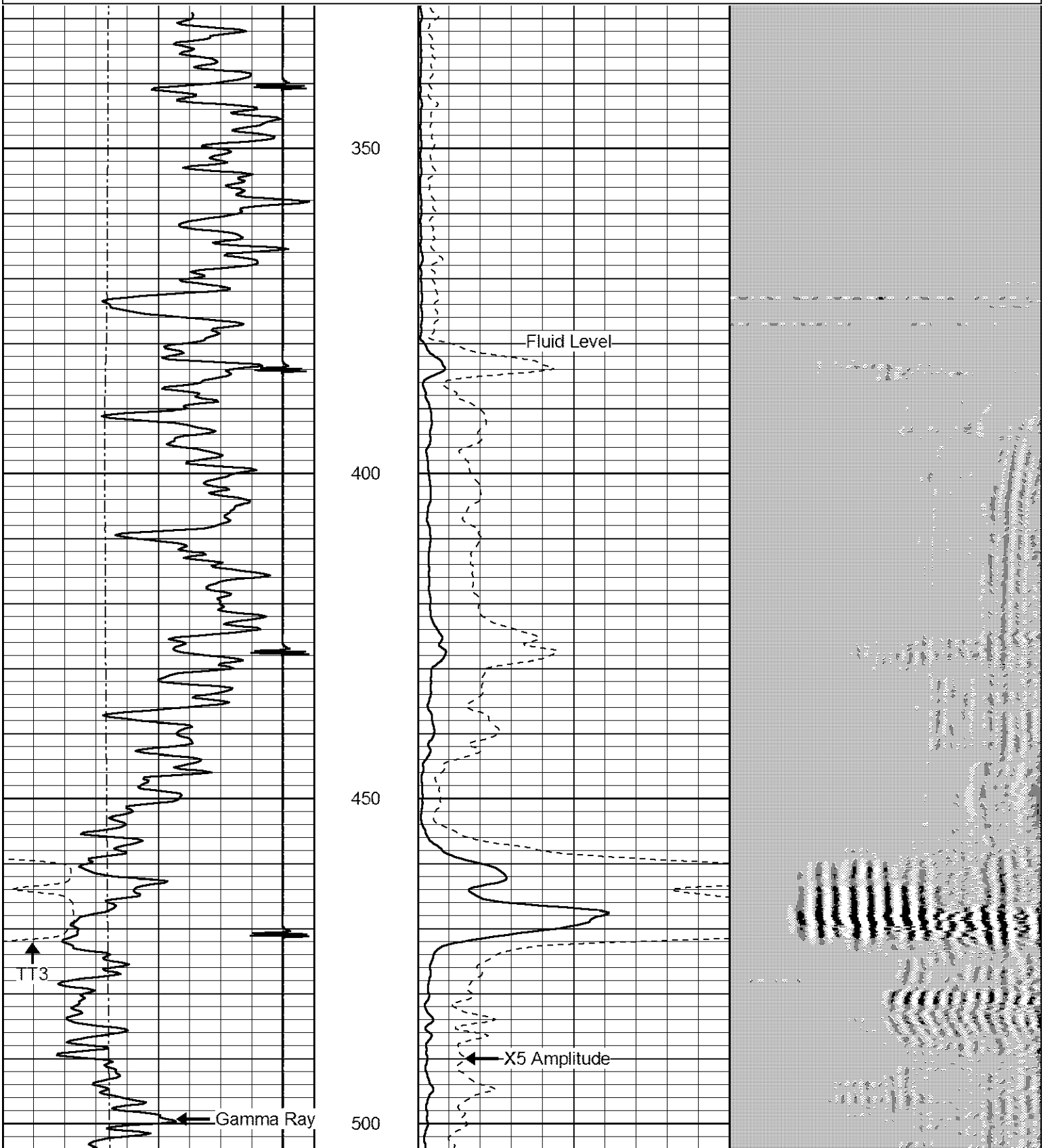
All interpretations are opinions based on inferences from electrical or other measurements and we cannot and do not guarantee the accuracy or correctness of any interpretation, and we shall not, except in the case of gross or willful negligence on our part, be liable or responsible for any loss, costs, damages, or expenses incurred or sustained by anyone resulting from any interpretation made by any of our officers, agents or employees. These interpretations are also subject to our general terms and conditions set out in our current Price Schedule.

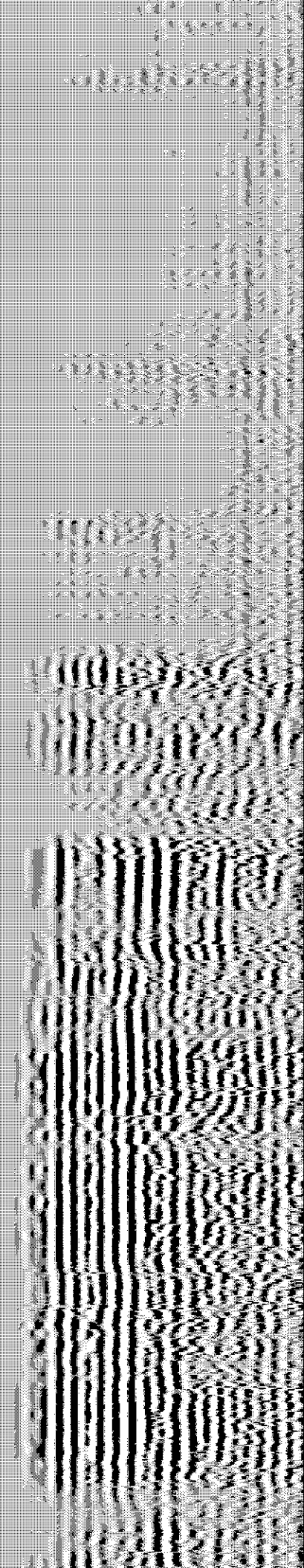
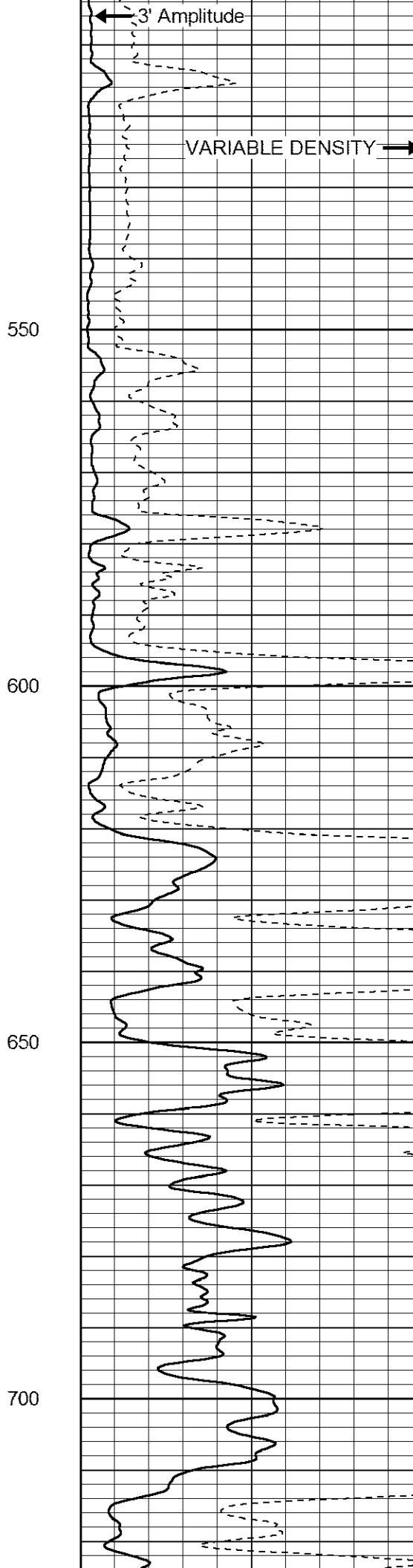
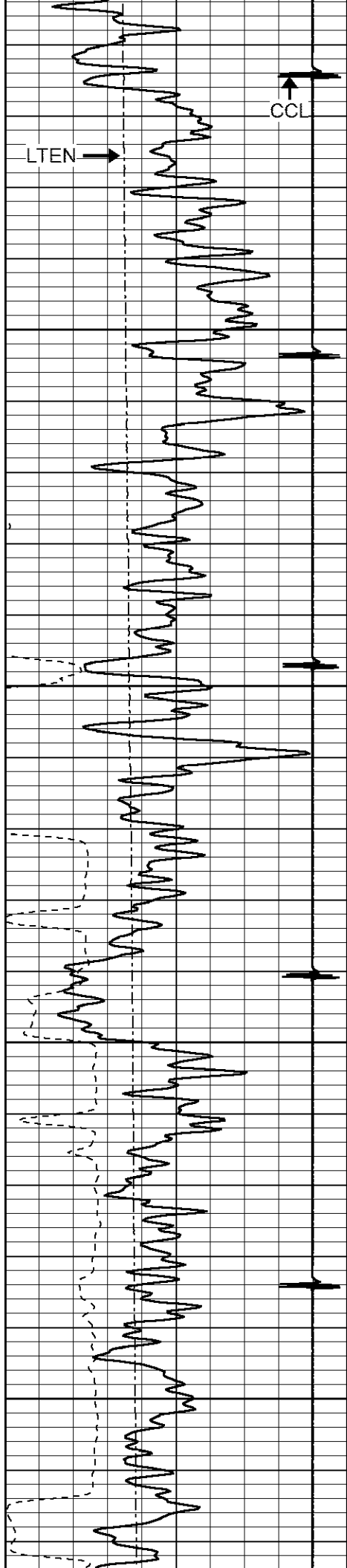
Comments

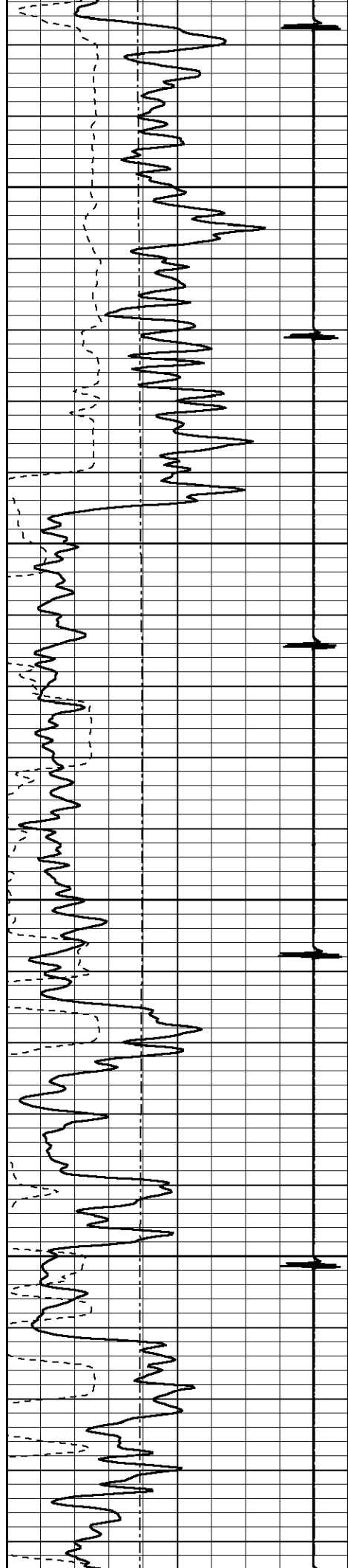
**THANK YOU FOR USING LOG TECH OF KANSAS!**  
**(620)792-2167**  
  
**DIRECTIONS**  
**ELLIS,KS**  
**NORTH TO CC ROAD**  
**3W 1N 1/2W SOUTH INTO**

Database File: pierce4.db  
 Dataset Pathname: pass5  
 Presentation Format: cbl02  
 Dataset Creation: Tue Sep 01 14:25:36 2015 by Log 7.0 B1  
 Charted by: Depth in Feet scaled 1:240

9	Collar Locator	-1	0	Amplitude (mV)	100	200	VARIABLE DENSITY	1200
0	Gamma Ray (GAPI)	150	0	X5 Amplitude (mV)	20			
320	TT3 (usec)	120						
0	LTEN (lb)	2000						





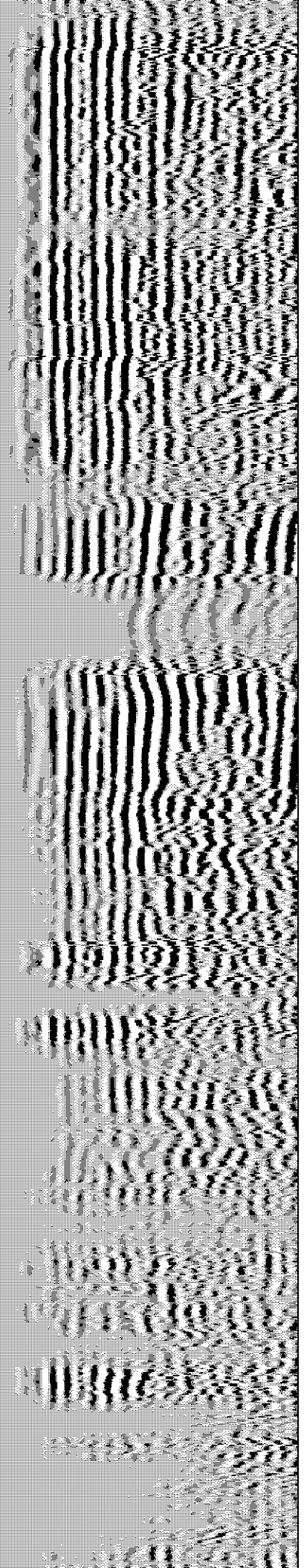
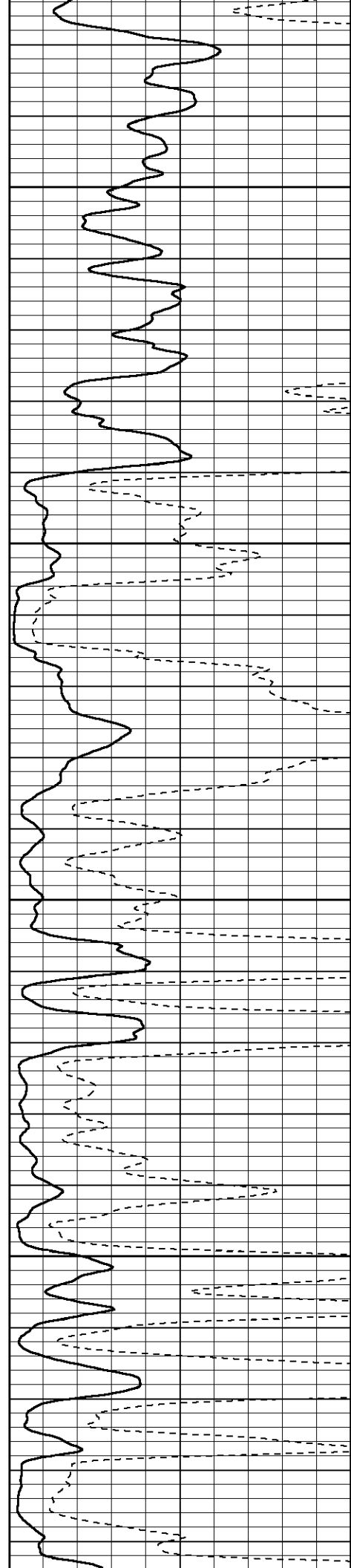


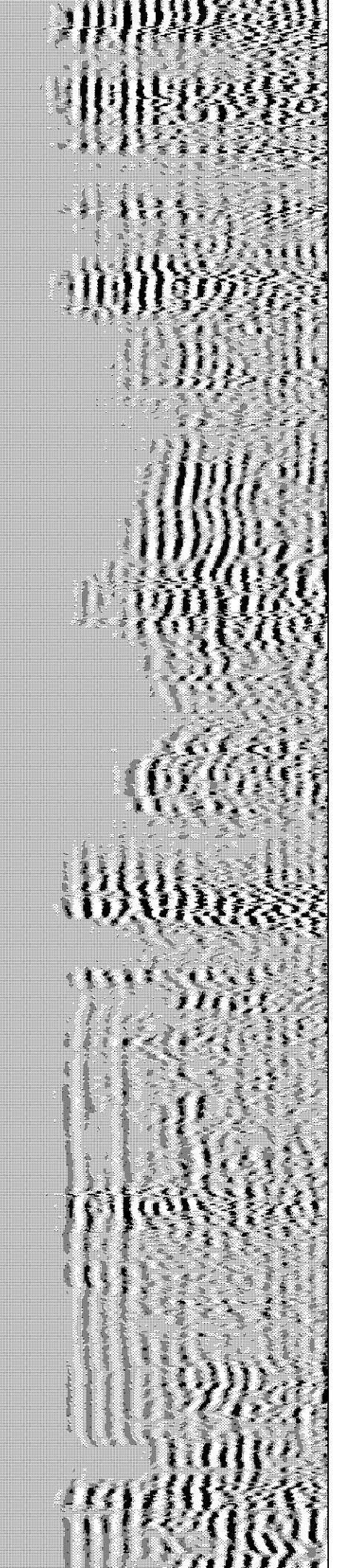
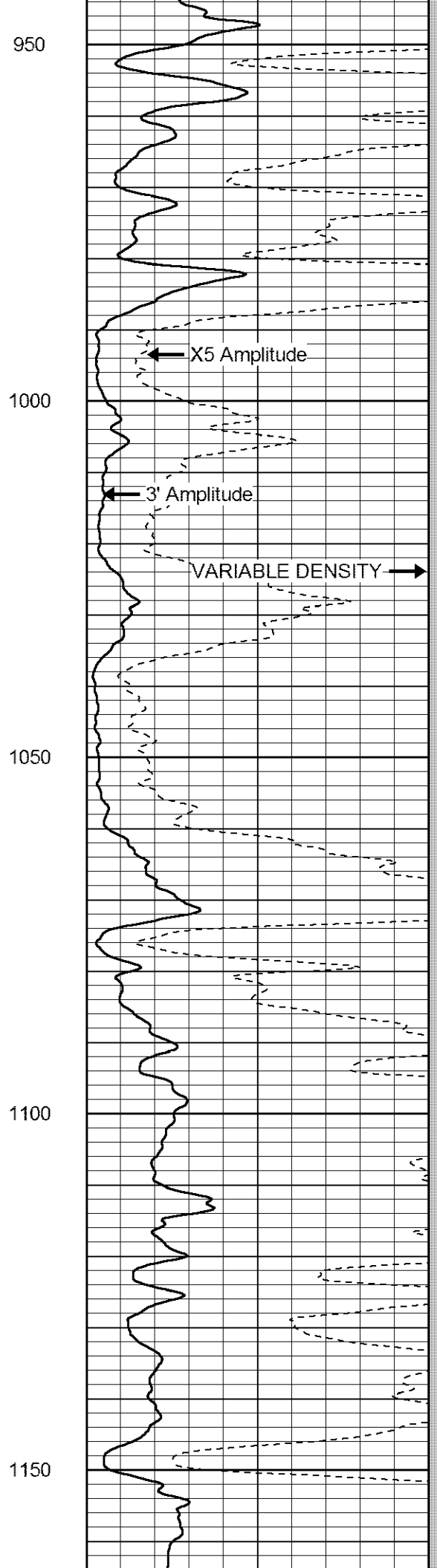
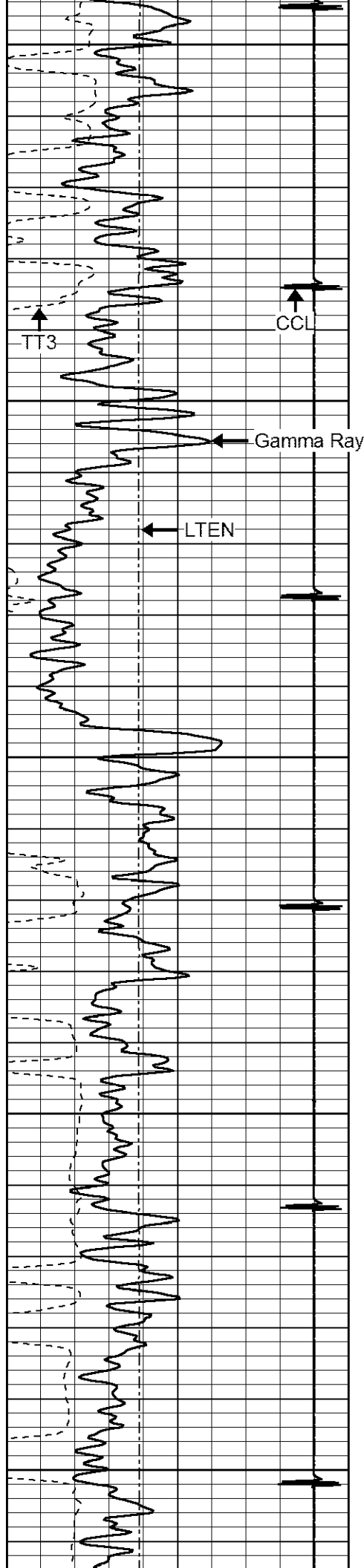
750

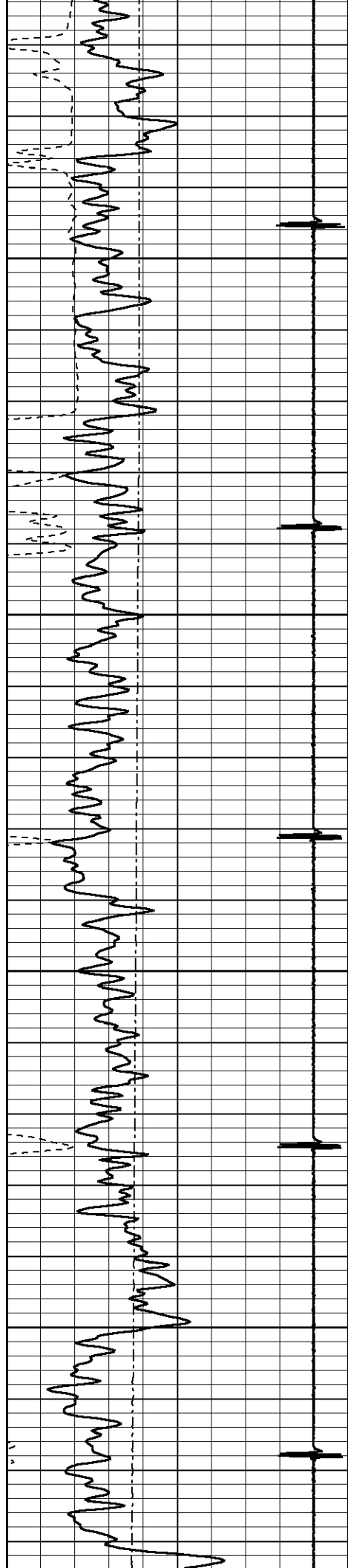
800

850

900





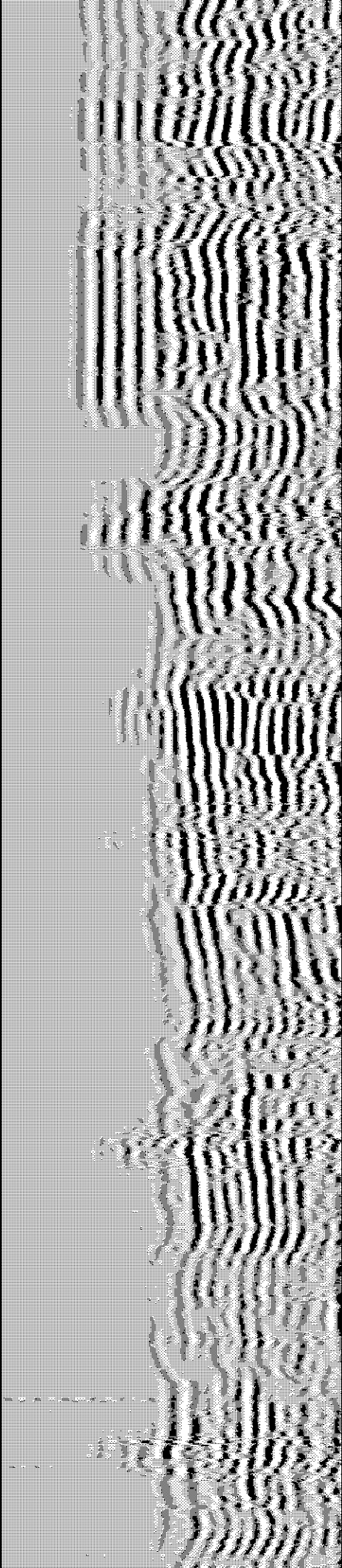
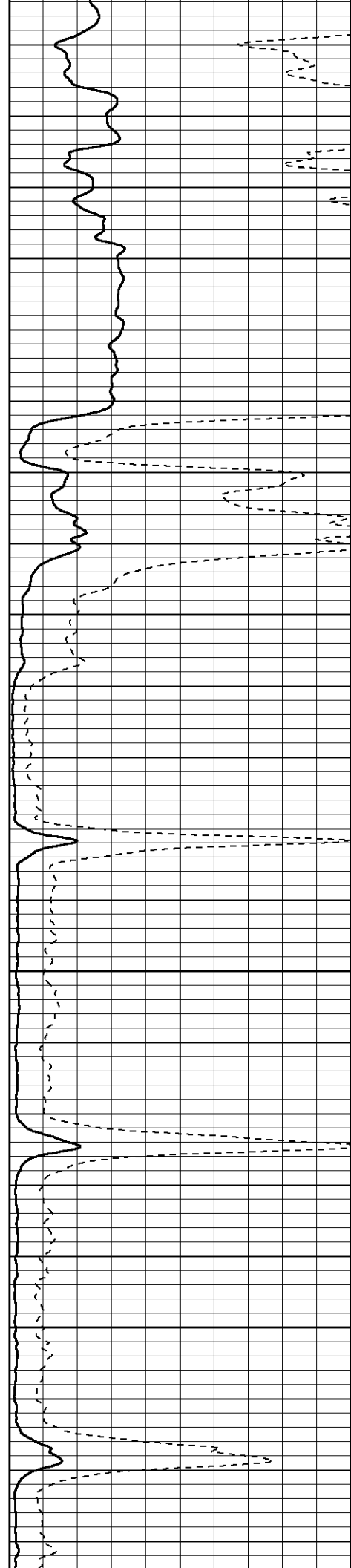


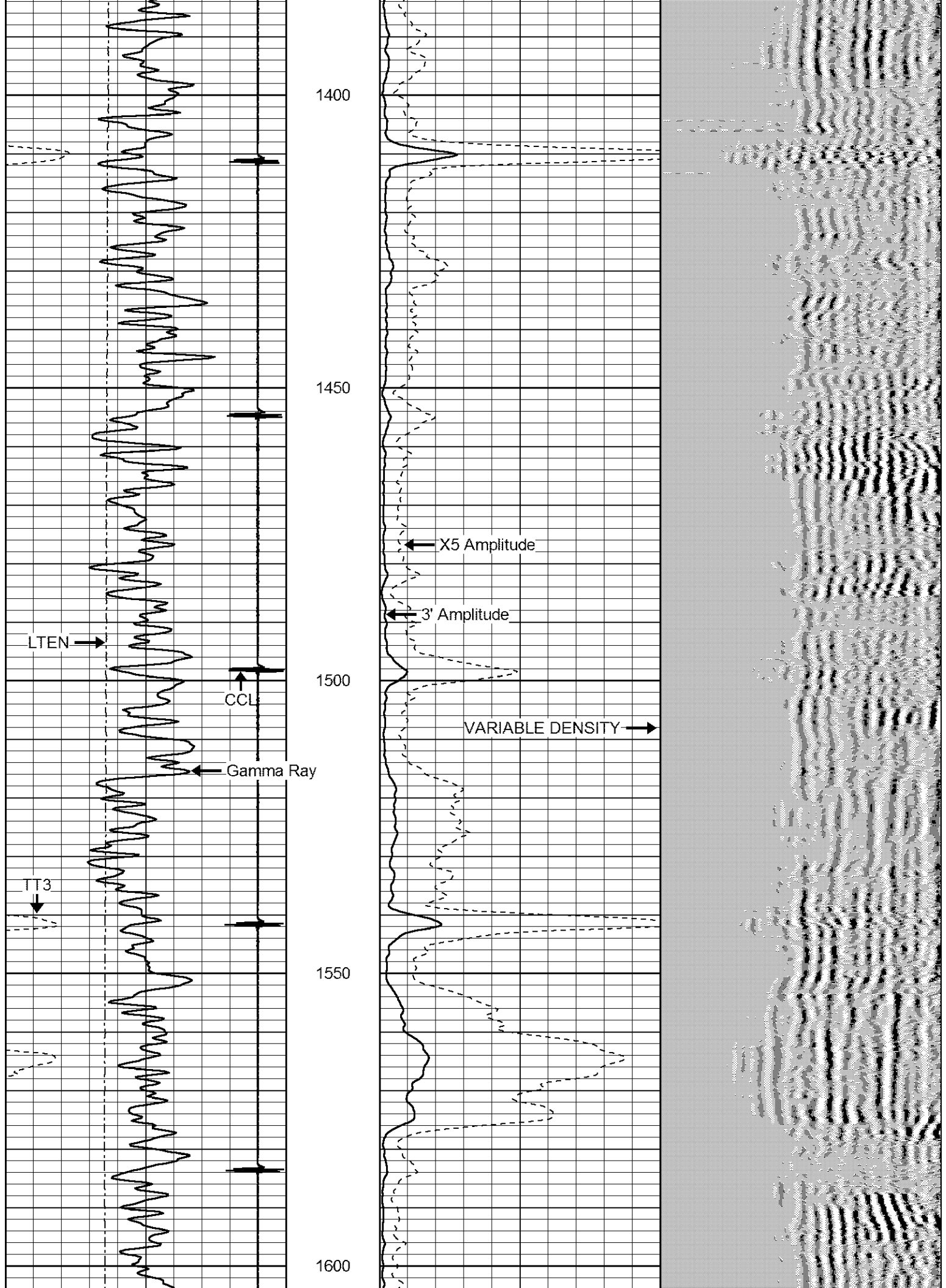
1200

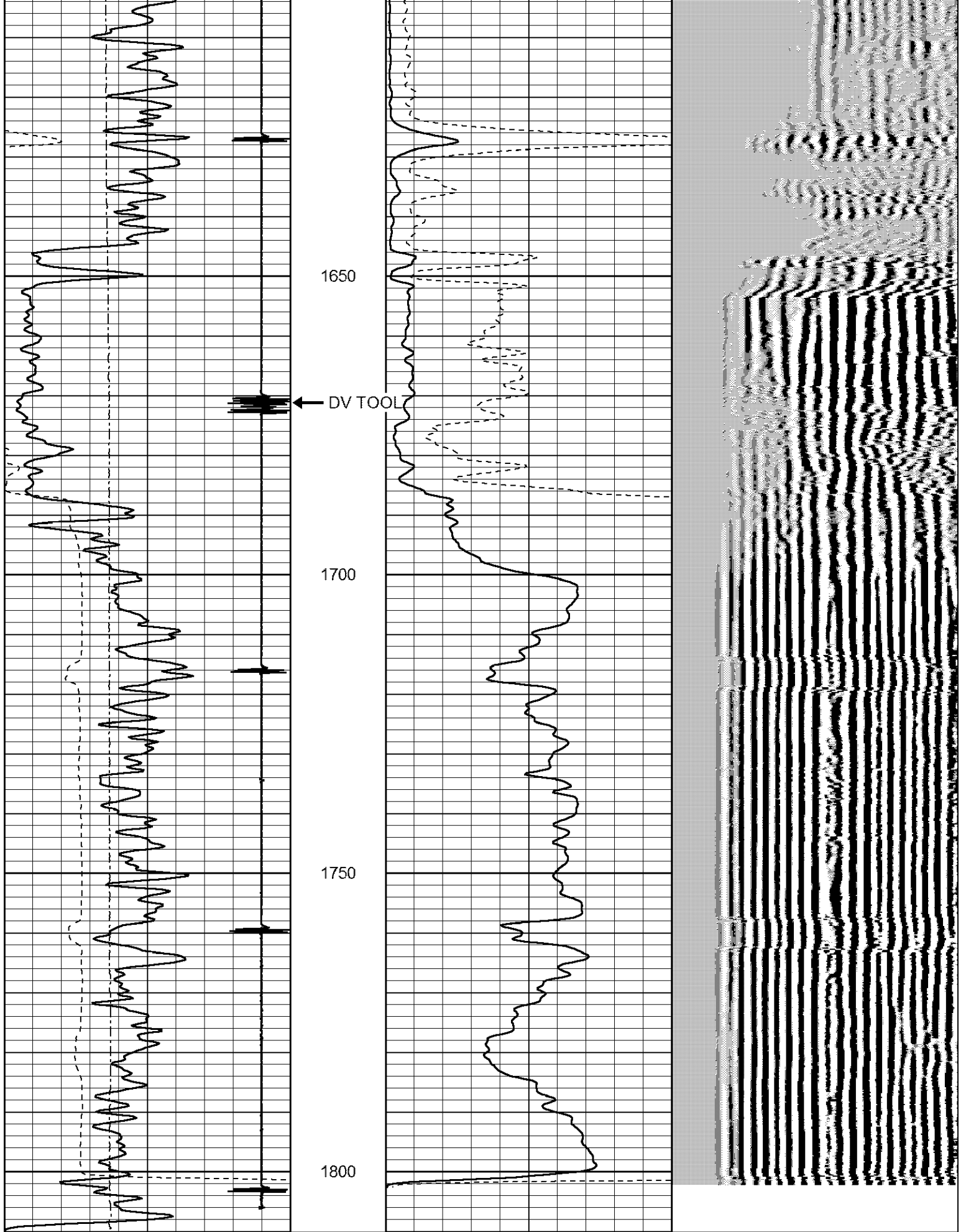
1250

1300

1350







9	Collar Locator	-1
0	Gamma Ray (GAPI)	150
320	TT3 (usec)	120

0	Amplitude (mV)	100
0	X5 Amplitude (mV)	20

200 VARIABLE DENSITY 1200



0 LTEN (lb) 2000

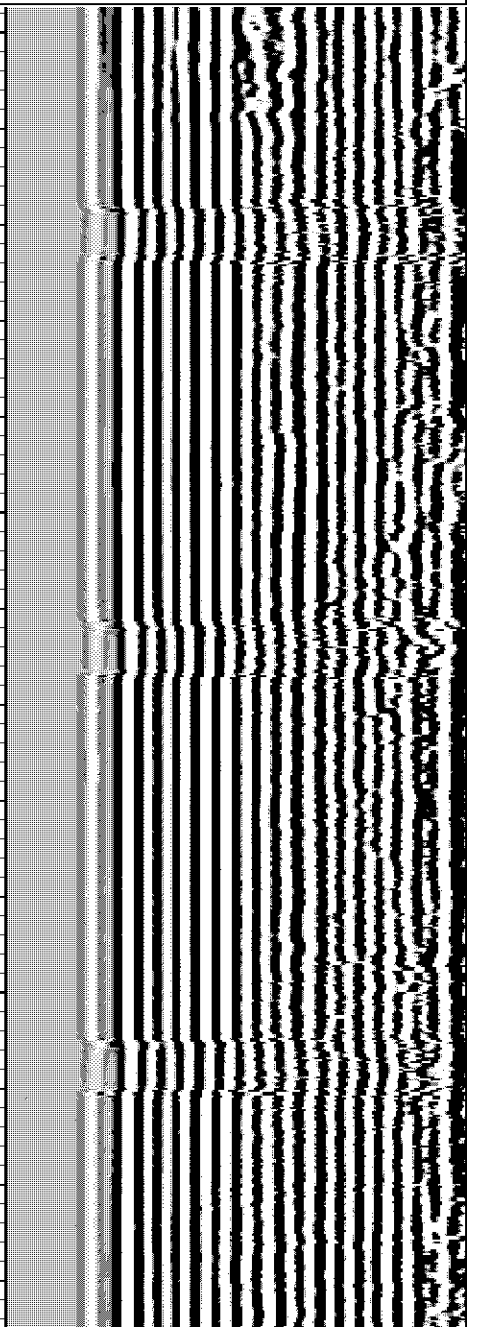
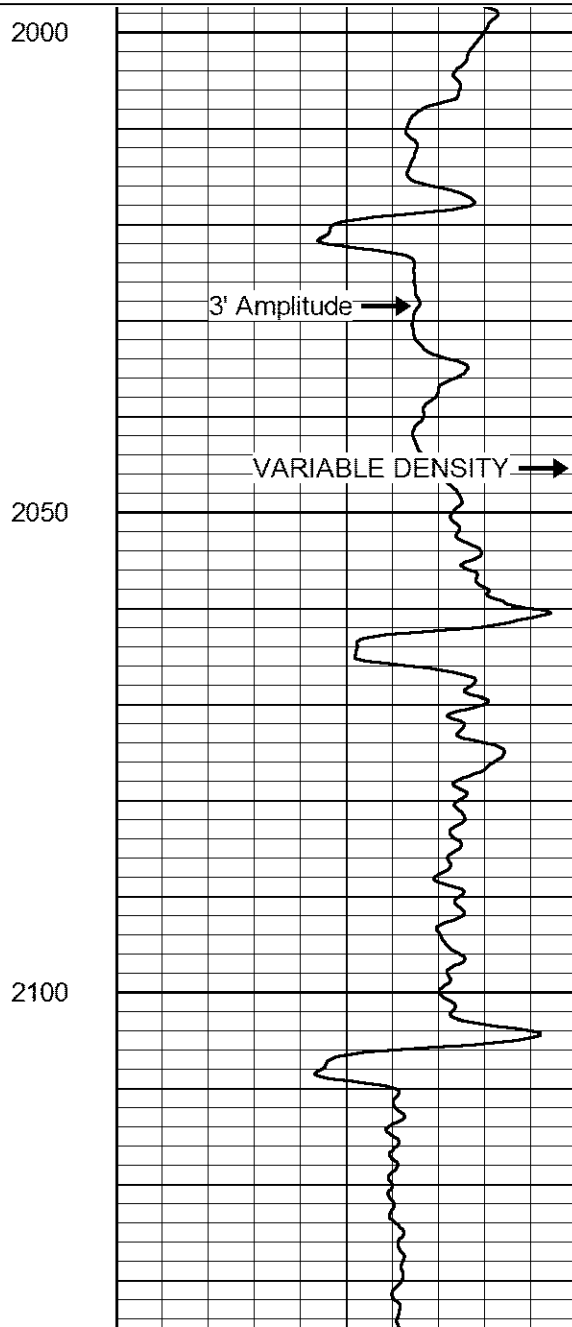
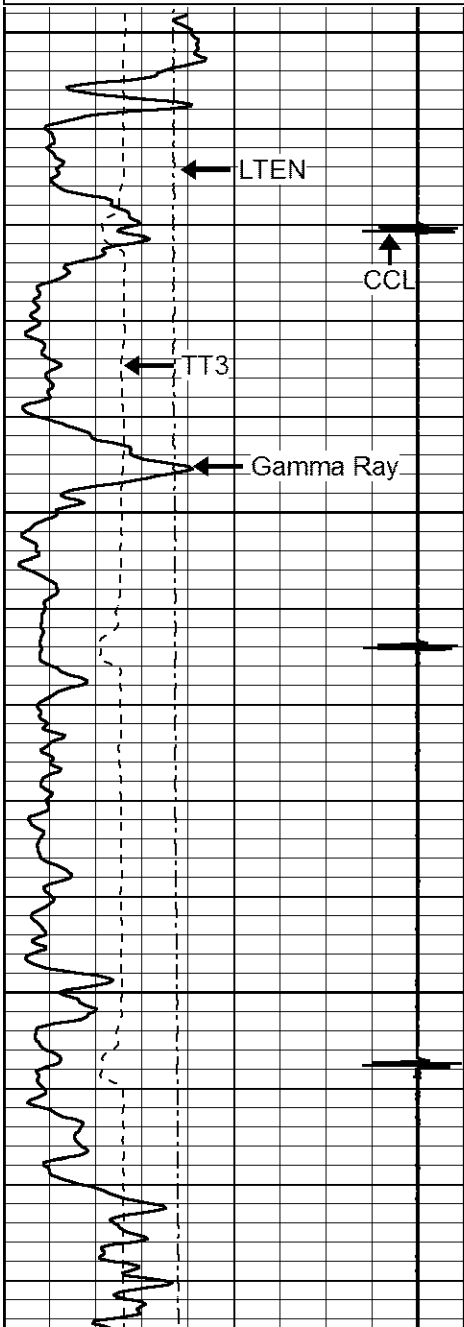


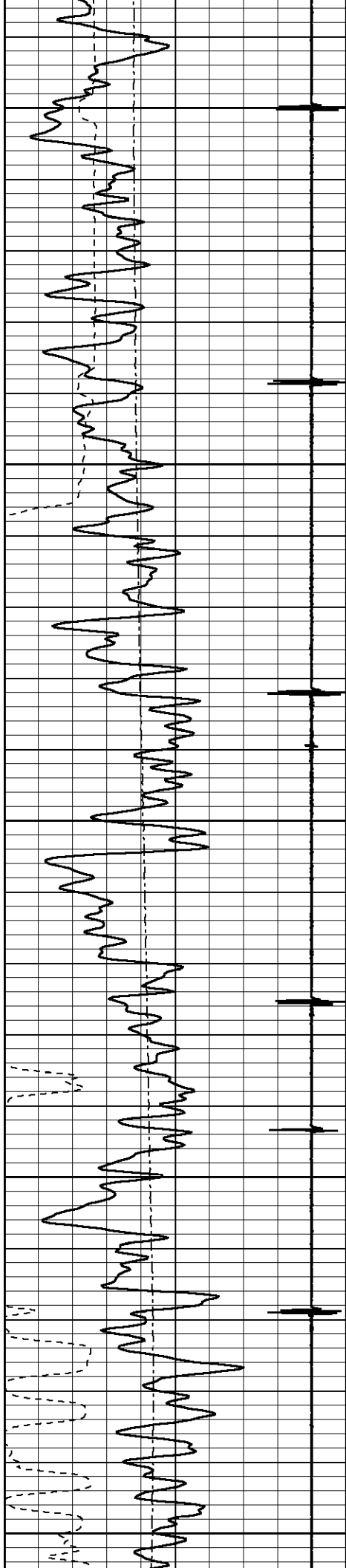
# MAIN PASS

Database File: pierce4.db  
Dataset Pathname: pass4  
Presentation Format: cbl02  
Dataset Creation: Tue Sep 01 13:31:09 2015 by Log 7.0 B1  
Charted by: Depth in Feet scaled 1:240

9	Collar Locator	-1
0	Gamma Ray (GAPI)	150
320	TT3 (usec)	120
0	LTEN (lb)	2000

0	Amplitude (mV)	100	200	VARIABLE DENSITY	1200
0	X5 Amplitude (mV)	20			





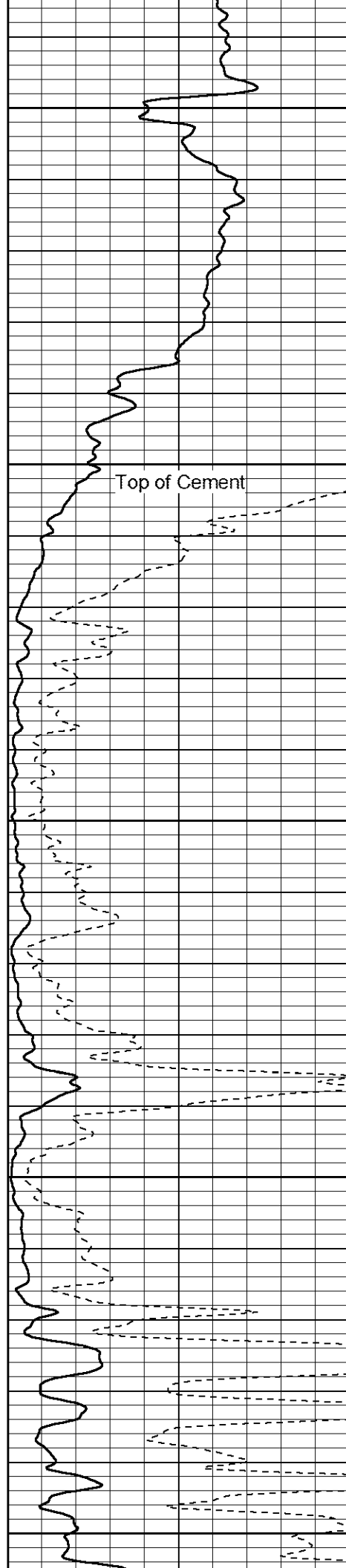
2150

2200

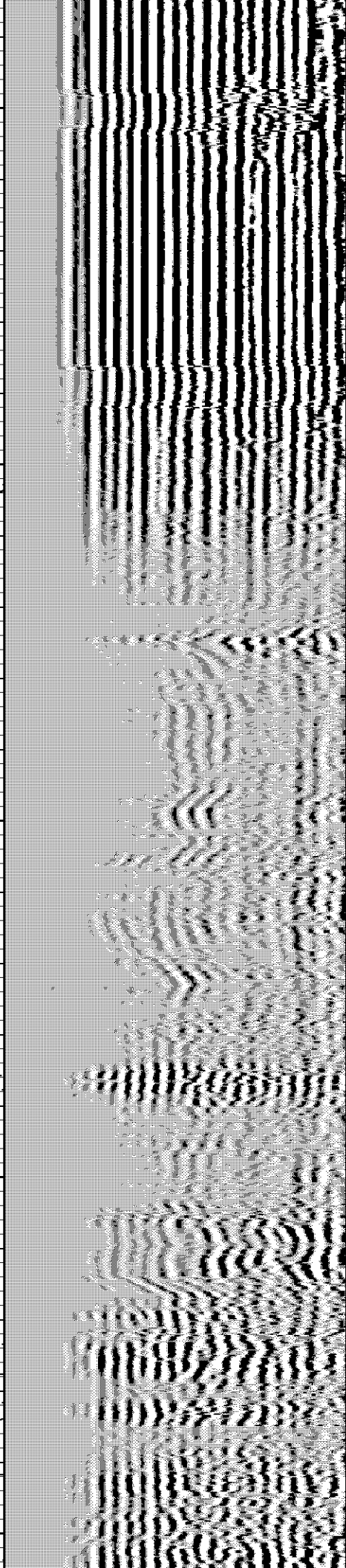
2250

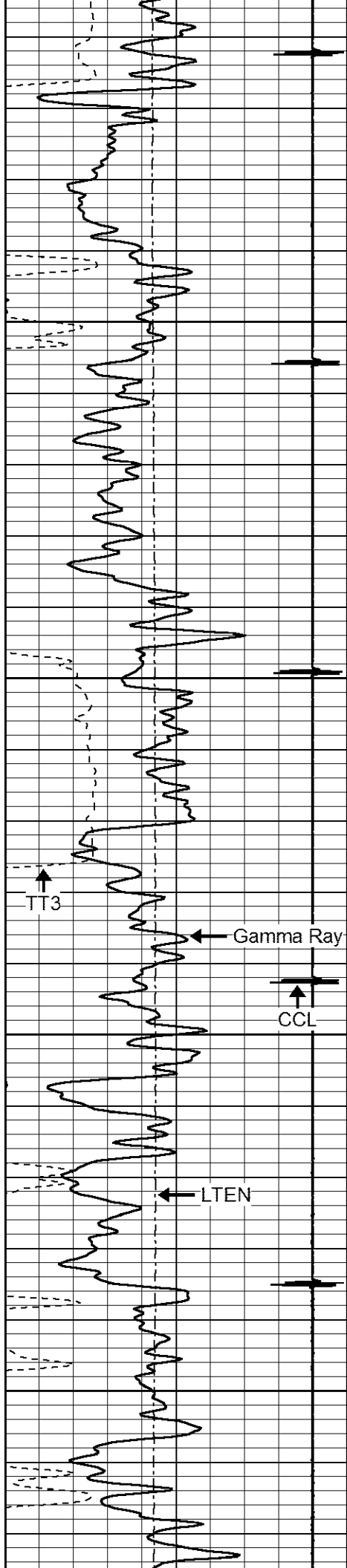
2300

2350



Top of Cement



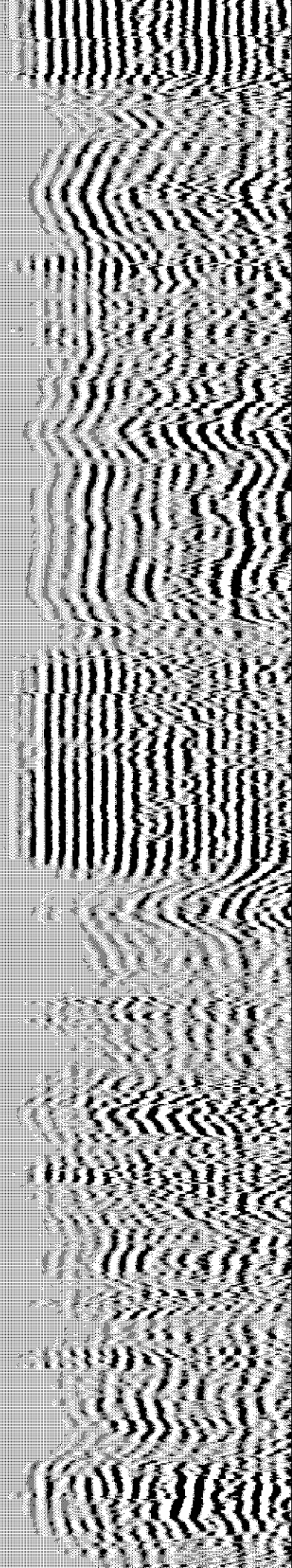
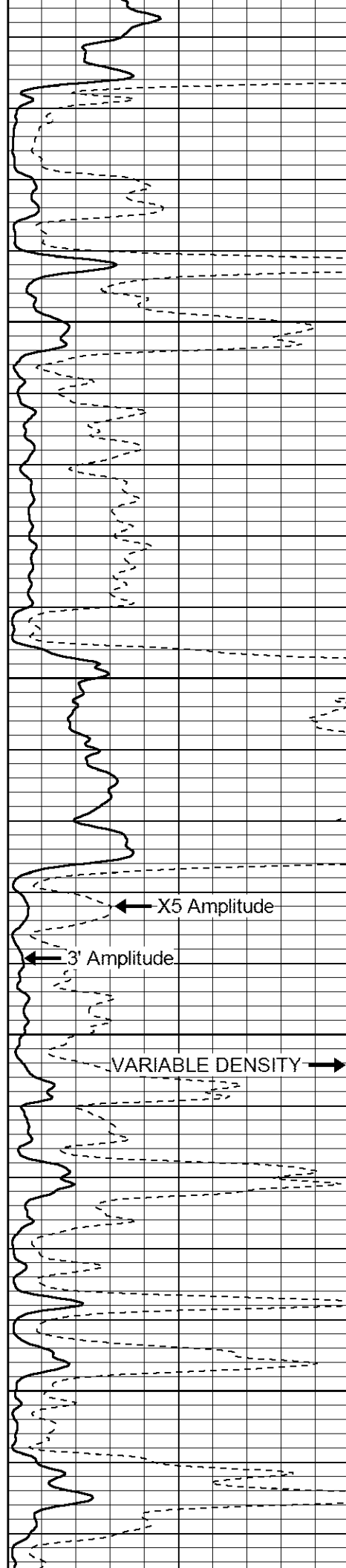


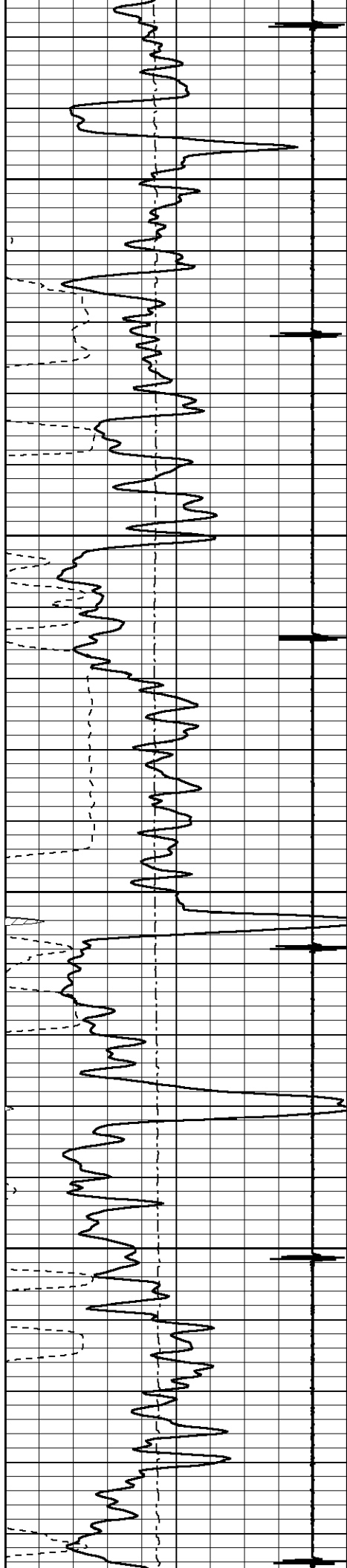
2400

2450

2500

2550



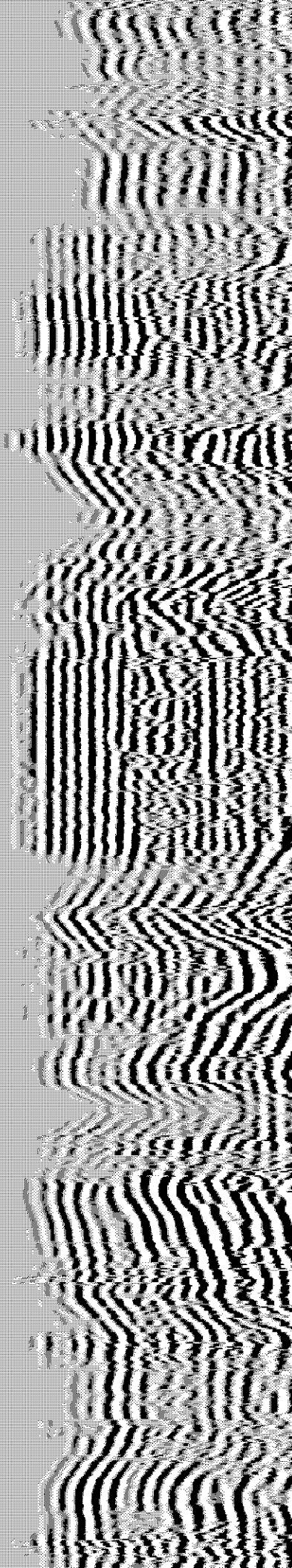
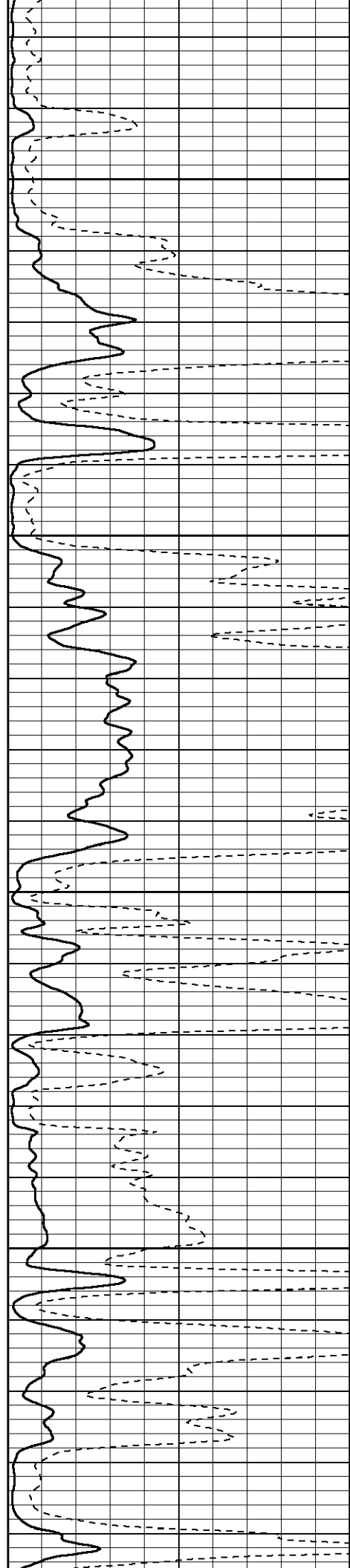


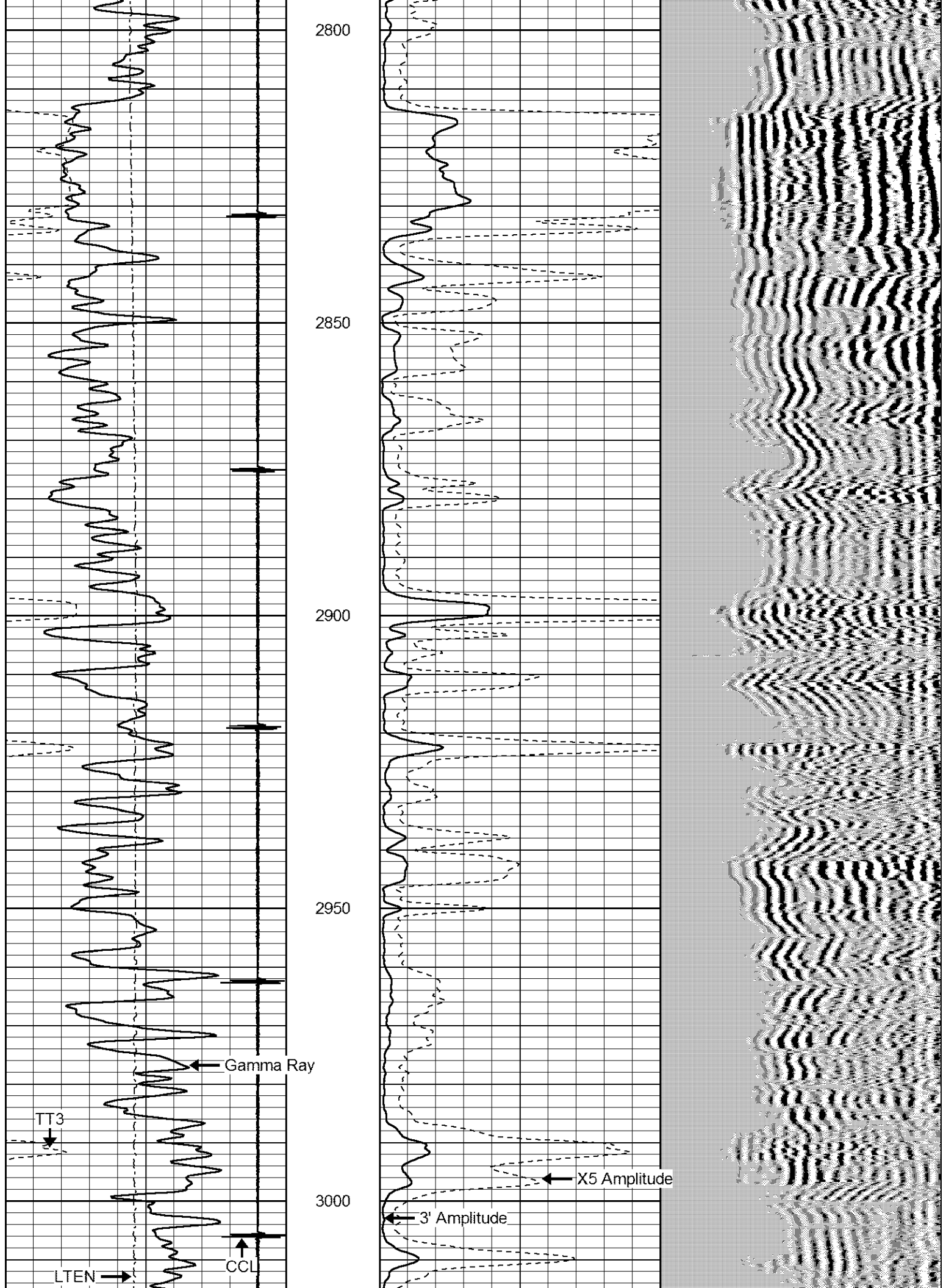
2600

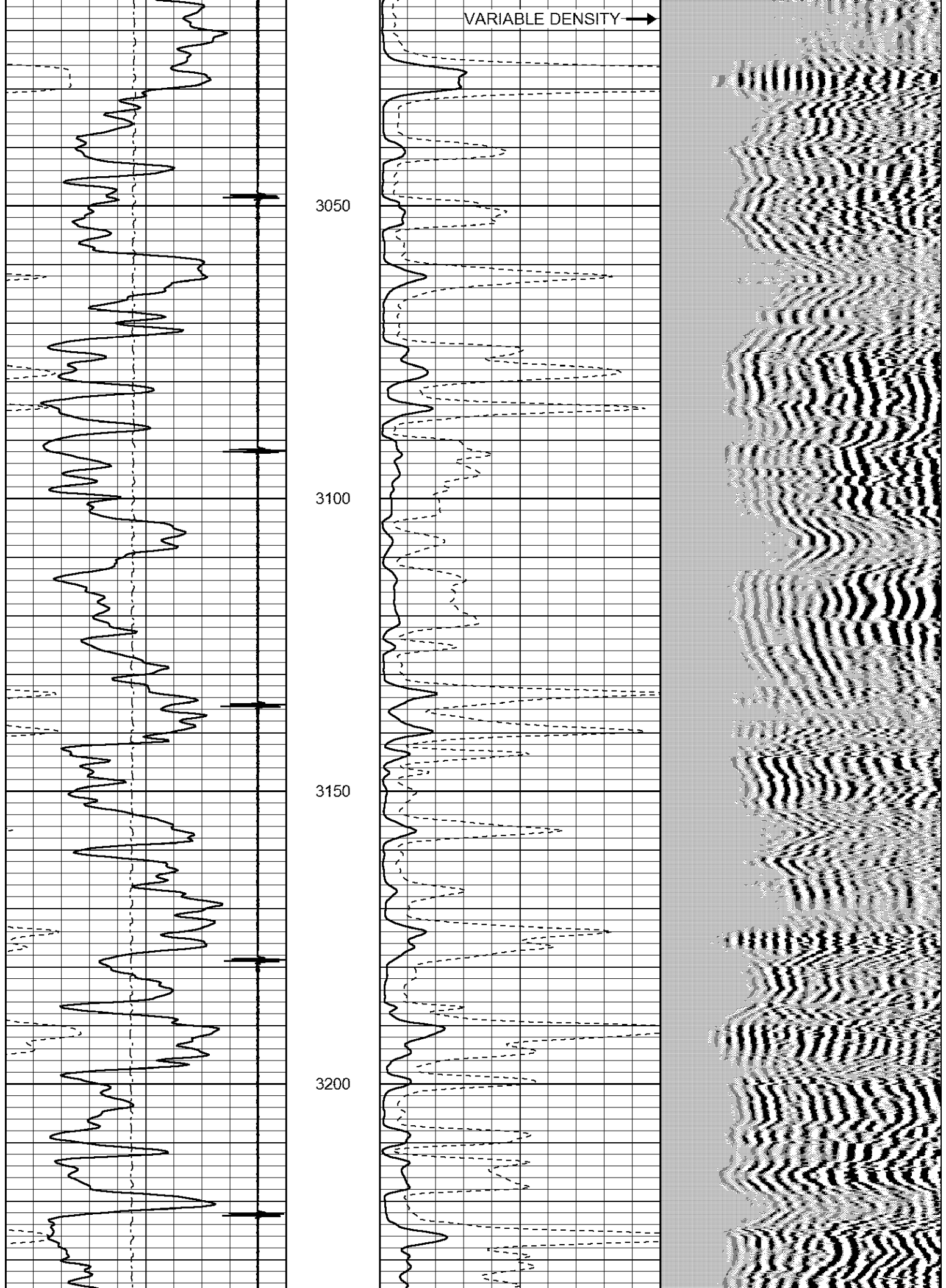
2650

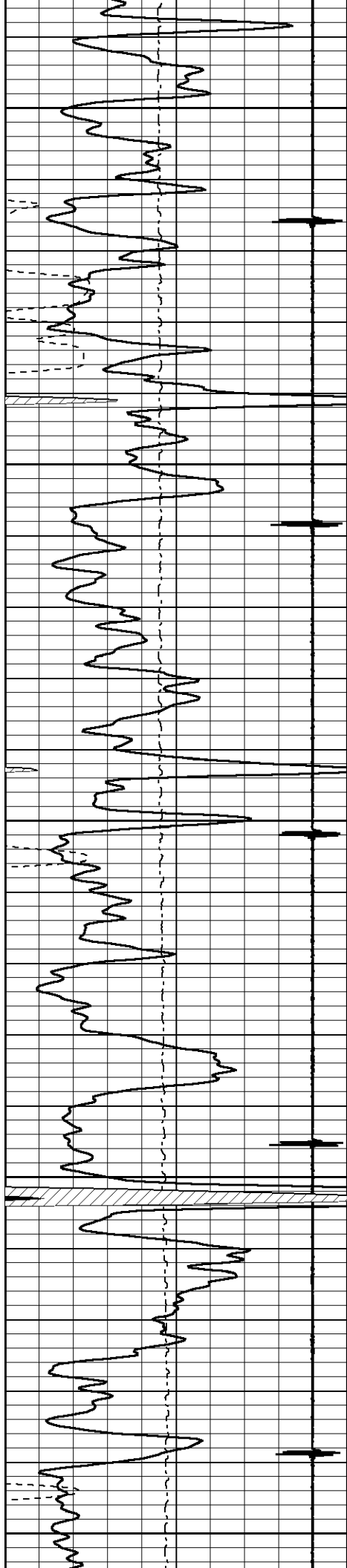
2700

2750









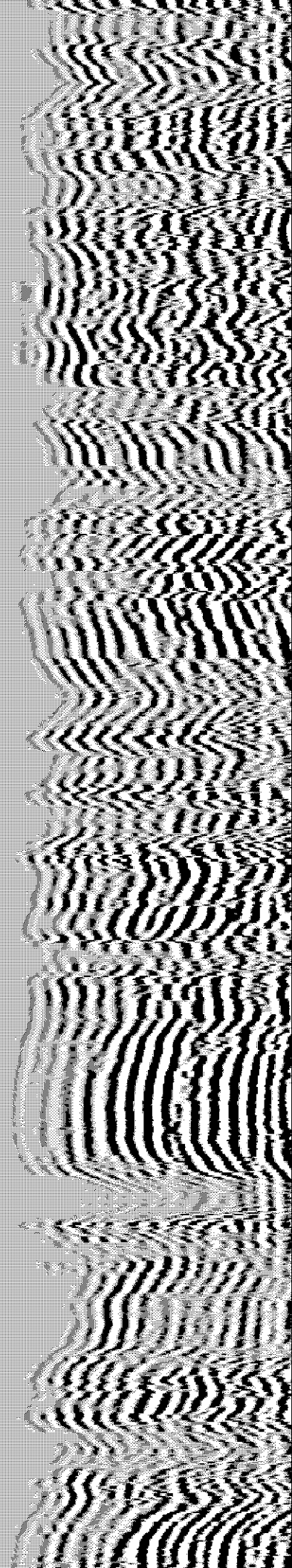
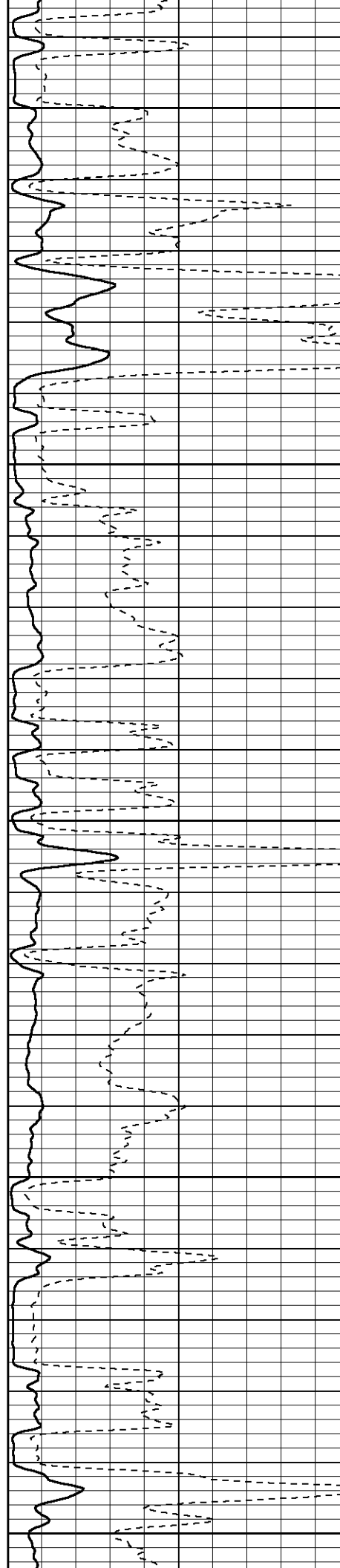
3250

3300

3350

3400

3450



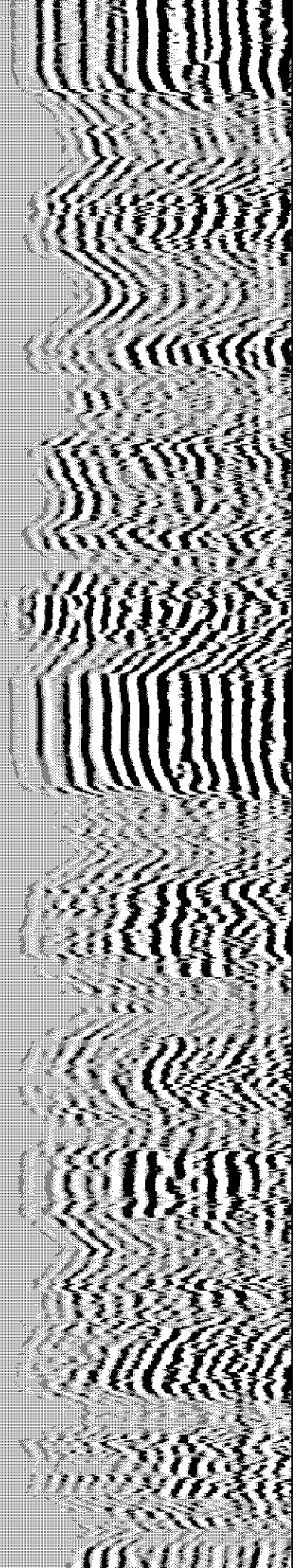
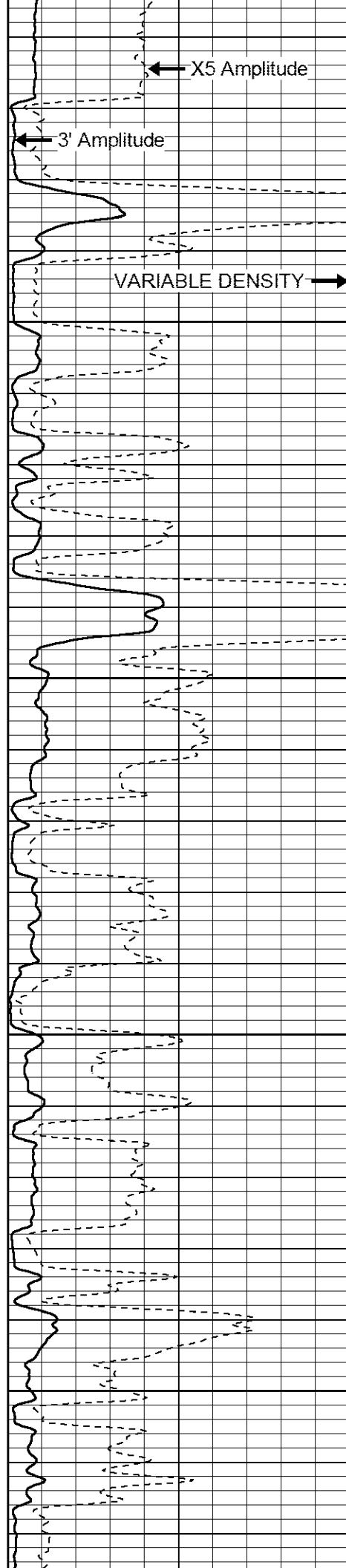


3500

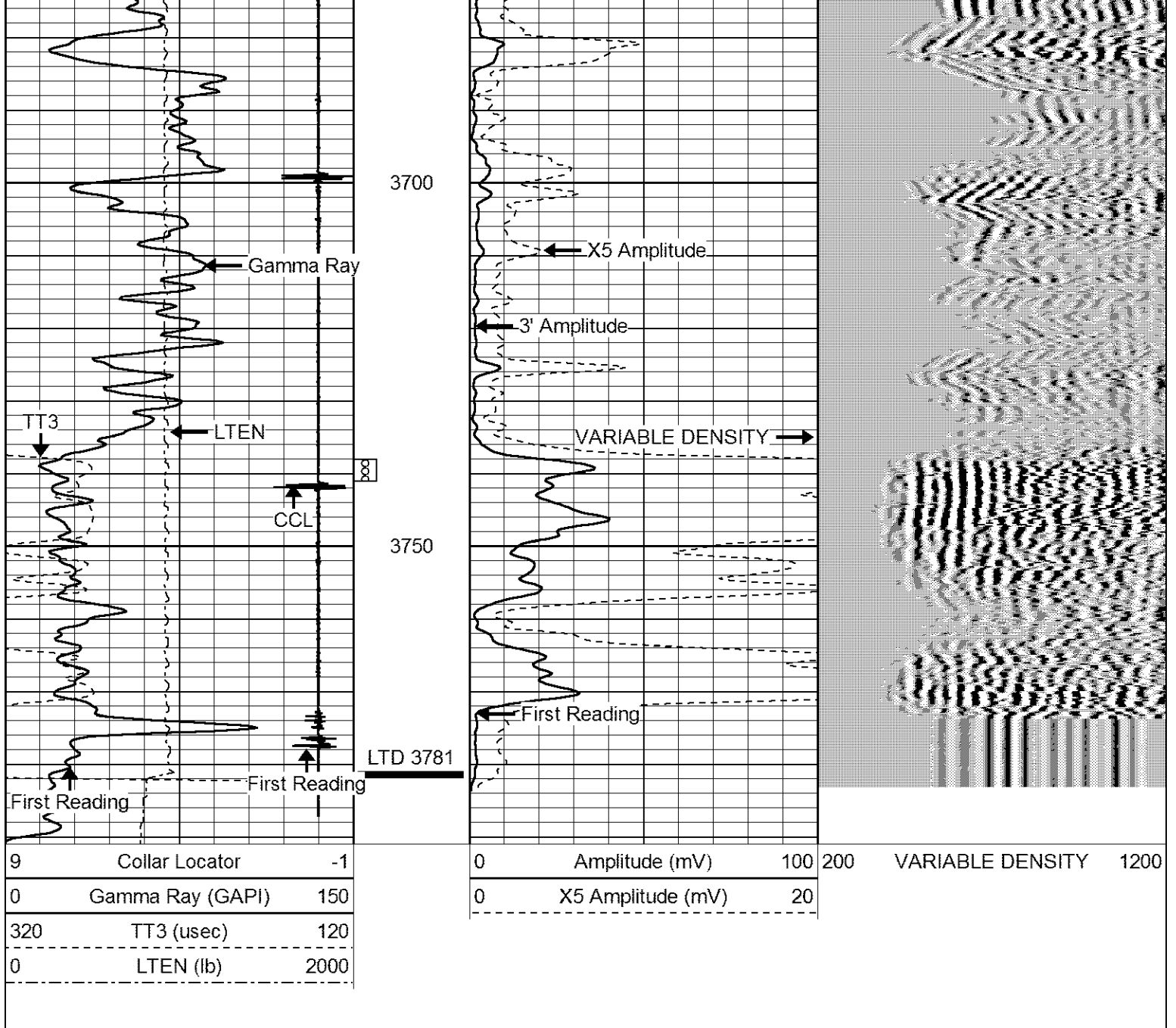
3550

3600

3650







**LOG-TECH**

*of Kansas*  
*Inc.*

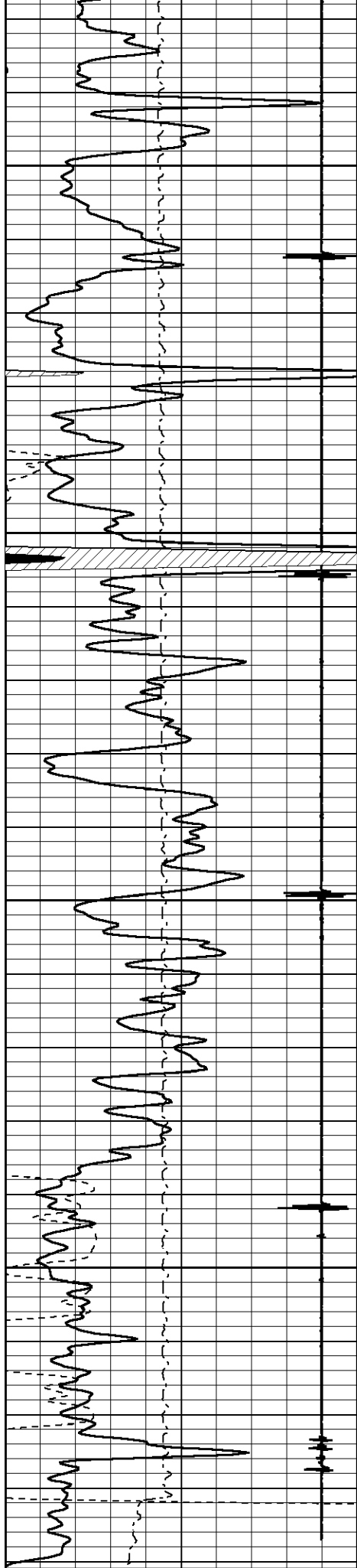
GREAT BEND, KANSAS

# REPEAT SECTION

Database File: pierce4.db  
 Dataset Pathname: pass3  
 Presentation Format: cbl02  
 Dataset Creation: Tue Sep 01 13:16:47 2015 by Log 7.0 B1  
 Charted by: Depth in Feet scaled 1:240

9	Collar Locator	-1	0	Amplitude (mV)	100	200	VARIABLE DENSITY	1200
0	Gamma Ray (GAPI)	150	0	X5 Amplitude (mV)	20			
320	TT3 (usec)	120						
0	LTEN (lb)	2000						





9 Collar Locator -1

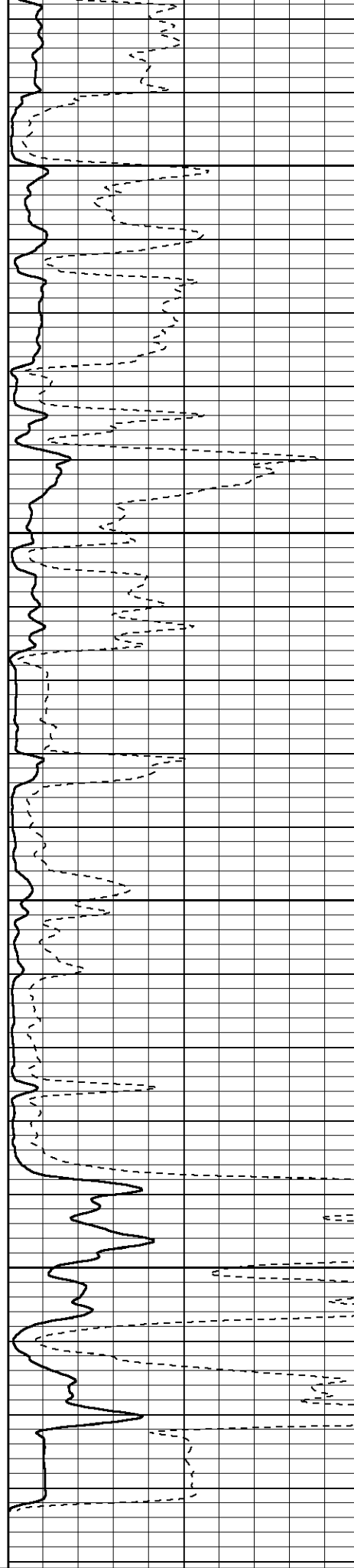
3600

3650

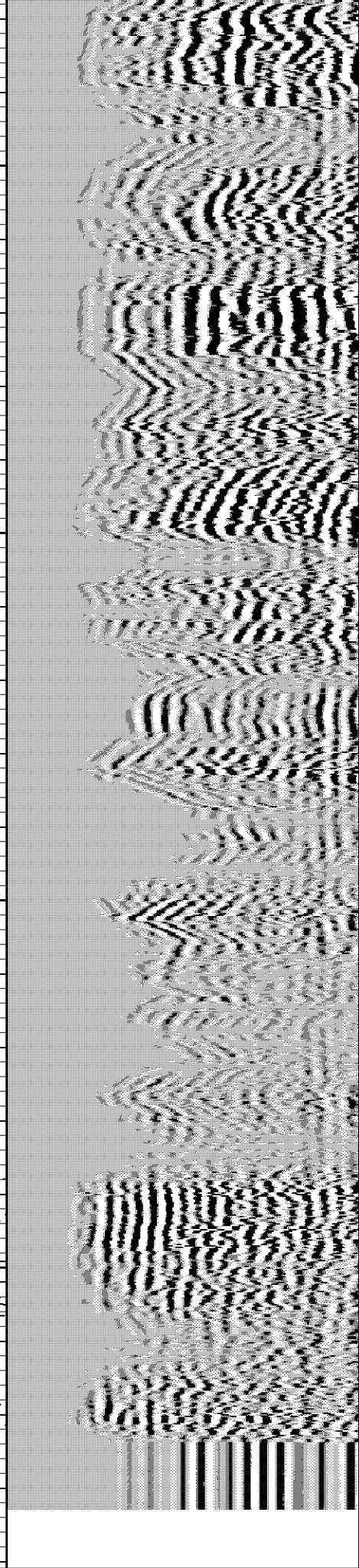
3700

3750

100



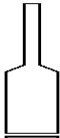
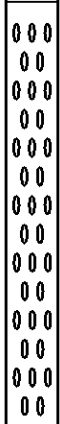
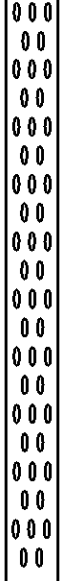


0 Amplitude (mV) 100



200 VARIABLE DENSITY 1200

0	Gamma Ray (GAPI)	150
320	TT3 (usec)	120
0	LTEN (lb)	2000

0 X5 Amplitude (mV) 20

Sensor	Offset (ft)	Schematic	Description	Len (ft)	OD (in)	Wt (lb)
			STNDRD Standard Cable Head	1.00	1.69	10.00
WVF3	8.76		CBL-probecbl (probecbl1) probe cbl	8.75	2.75	92.00
WVF5	7.76					
CCL	3.69		CCL-Probe (275) probe ccl	1.55	2.75	30.00
GR	0.90		GR-probegr (progr1) probe gamma ray	3.02	2.75	20.00

Dataset: pierce4.db: field/well/run1/pass5 Total Length: 14.32 ft Total Weight: 152.00 lb O.D. 2.75 in						