

# ADVANTAGE ELEVATIONS

OIL FIELD SURVEYORS

BOX 8604 - PRATT, KS 67124  
(620) 672-6491

524171  
INVOICE NO.

DRAKE EXPLORATION, LLC  
OPERATOR

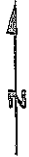
1  
NO.

AUSTIN (QWWO)  
FARM

SUMNER      26    34s    1e  
COUNTY      S      T      R

1900' FSL & 1900' FEL of Sec  
LOCATION

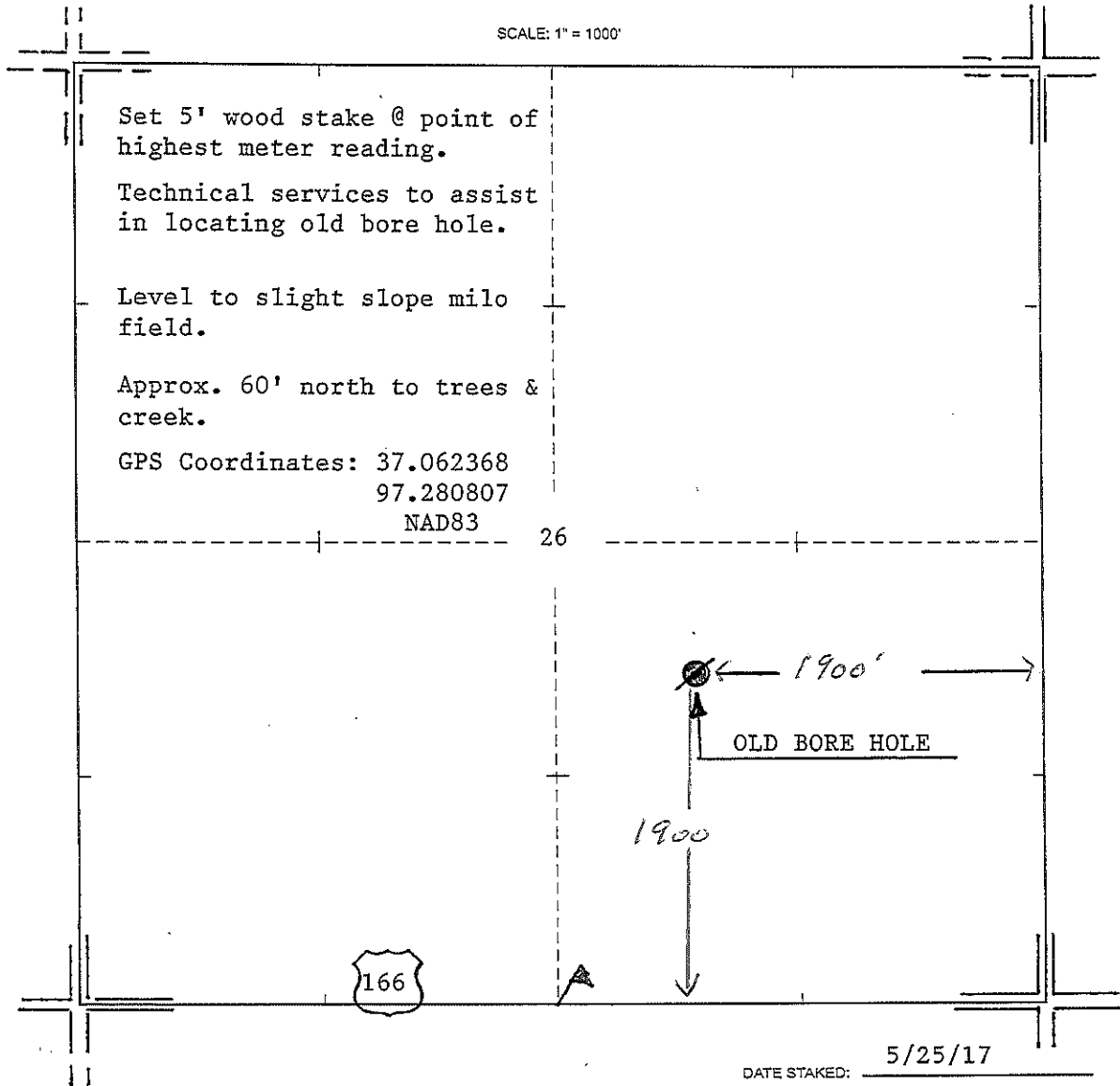
ELEVATION: 1140' GR



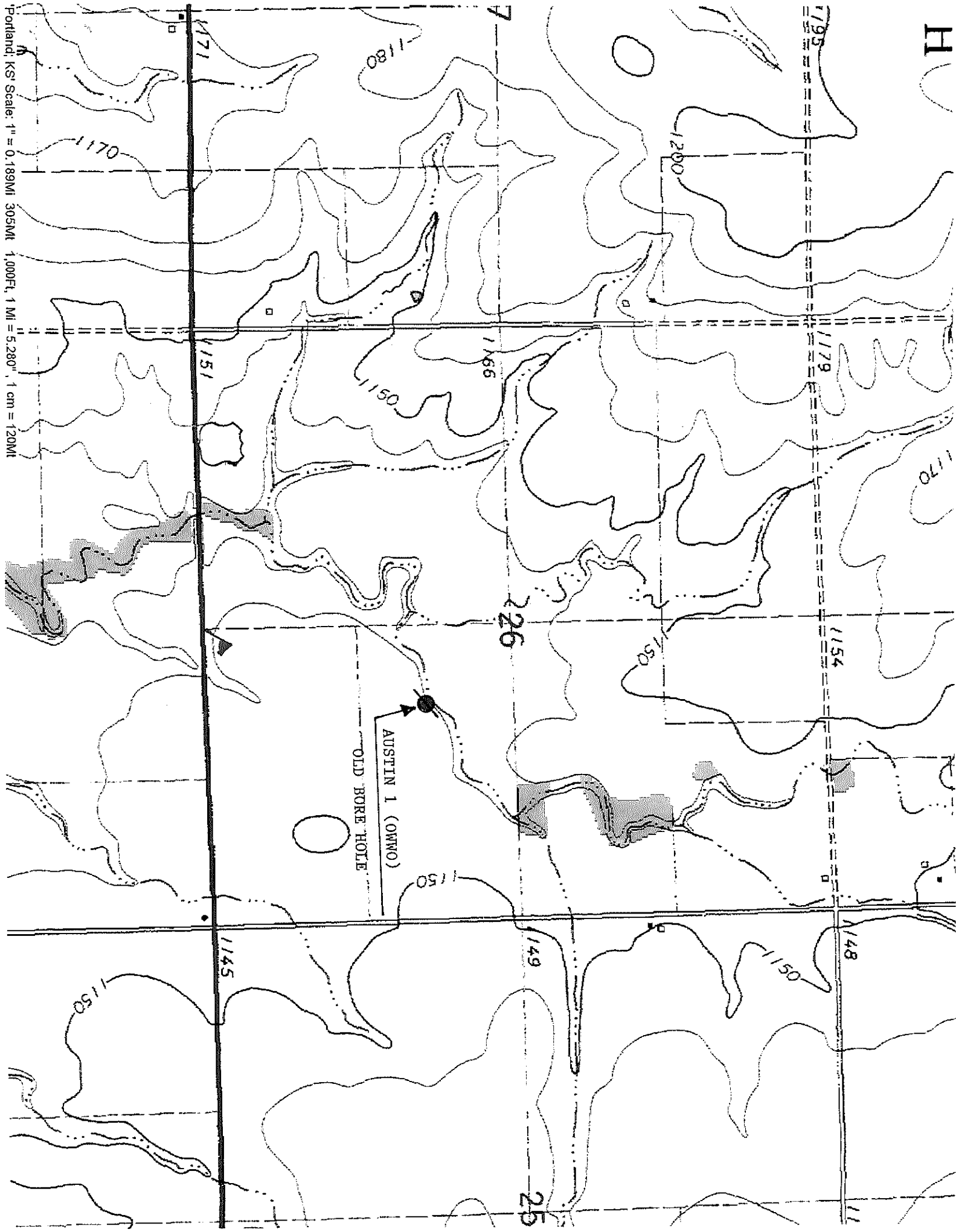
DRAKE EXPLORATION LLC  
PO Box 782228  
Wichita, KS 67278-2228

AUTHORIZED BY: Darren Broyles

SCALE: 1" = 1000'



H



Portland, KS Scale: 1" = 0.189MI 305MI 1,000FT, 1 MI = 5,280', 1 cm = 120MI