



TEMPORARY ABANDONMENT WELL APPLICATION

OPERATOR: License# _____
 Name: _____
 Address 1: _____
 Address 2: _____
 City: _____ State: _____ Zip: _____ + _____
 Contact Person: _____
 Phone: (_____) _____
 Contact Person Email: _____
 Field Contact Person: _____
 Field Contact Person Phone: (_____) _____

API No. 15- _____
 Spot Description: _____
 _____ - _____ - _____ - _____ Sec. _____ Twp. _____ S. R. _____ E W
 _____ feet from N / S Line of Section
 _____ feet from E / W Line of Section
 GPS Location: Lat: _____, Long: _____
(e.g. xx.xxxxx) (e.g. -xxx.xxxxx)
 Datum: NAD27 NAD83 WGS84
 County: _____ Elevation: _____ GL KB
 Lease Name: _____ Well #: _____
 Well Type: (check one) Oil Gas OG WSW Other: _____
 SWD Permit #: _____ ENHR Permit #: _____
 Gas Storage Permit #: _____
 Spud Date: _____ Date Shut-In: _____

	Conductor	Surface	Production	Intermediate	Liner	Tubing
Size						
Setting Depth						
Amount of Cement						
Top of Cement						
Bottom of Cement						

Casing Fluid Level from Surface: _____ How Determined? _____ Date: _____
 Casing Squeeze(s): _____ to _____ w / _____ sacks of cement, _____ to _____ w / _____ sacks of cement. Date: _____
(top) (bottom) (top) (bottom)
 Do you have a valid Oil & Gas Lease? Yes No
 Depth and Type: Junk in Hole at _____ Tools in Hole at _____ Casing Leaks: Yes No Depth of casing leak(s): _____
(depth) (depth)
 Type Completion: ALT. I ALT. II Depth of: DV Tool: _____ w / _____ sacks of cement Port Collar: _____ w / _____ sack of cement
(depth) (depth)
 Packer Type: _____ Size: _____ Inch Set at: _____ Feet
 Total Depth: _____ Plug Back Depth: _____ Plug Back Method: _____

Geological Data:

Formation Name	Formation Top	Formation Base	Completion Information
1. _____	At: _____	to _____ Feet	Perforation Interval _____ to _____ Feet or Open Hole Interval _____ to _____ Feet
2. _____	At: _____	to _____ Feet	Perforation Interval _____ to _____ Feet or Open Hole Interval _____ to _____ Feet

UNDER PENALTY OF PERJURY I HEREBY ATTEST THAT THE INFORMATION CONTAINED HEREIN IS TRUE AND CORRECT TO THE BEST OF MY KNOWLEDGE

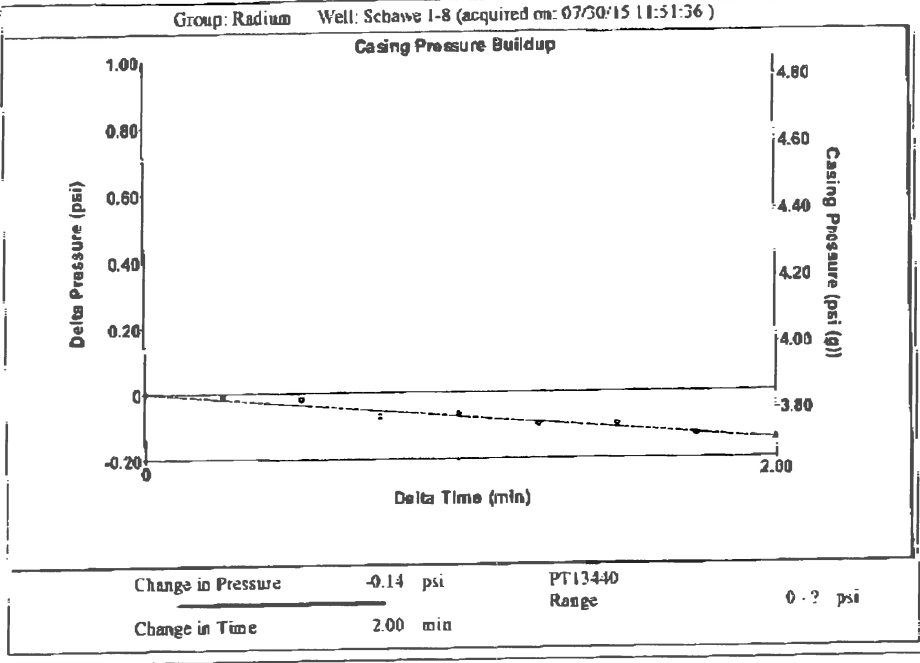
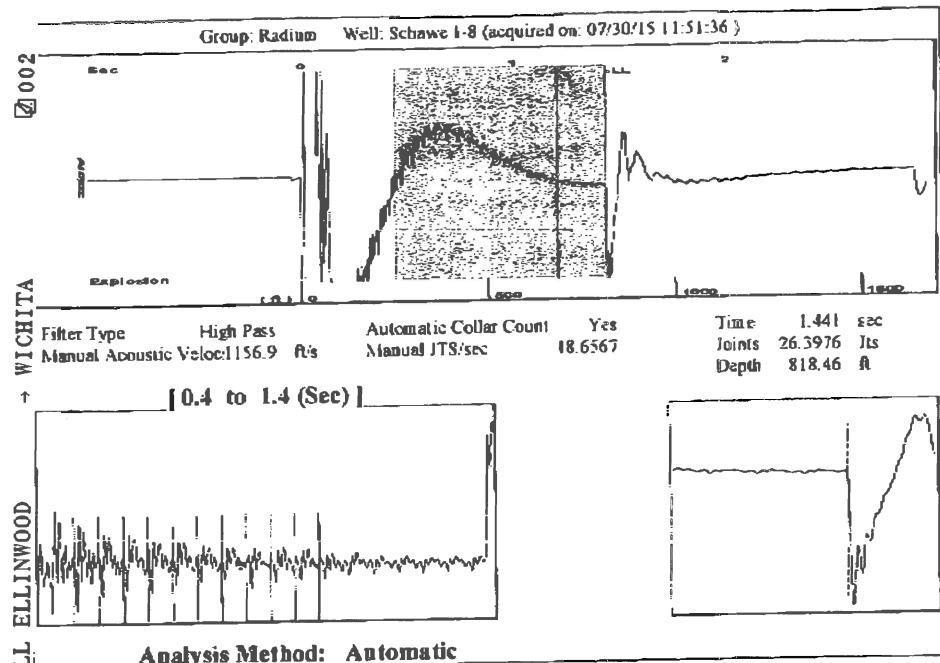
Submitted Electronically

Do NOT Write in This Space - KCC USE ONLY	Date Tested: _____	Results: _____	Date Plugged: _____	Date Repaired: _____	Date Put Back in Service: _____
	Review Completed by: _____ Comments: _____				
TA Approved: <input type="checkbox"/> Yes <input type="checkbox"/> Denied Date: _____					

Mail to the Appropriate KCC Conservation Office:

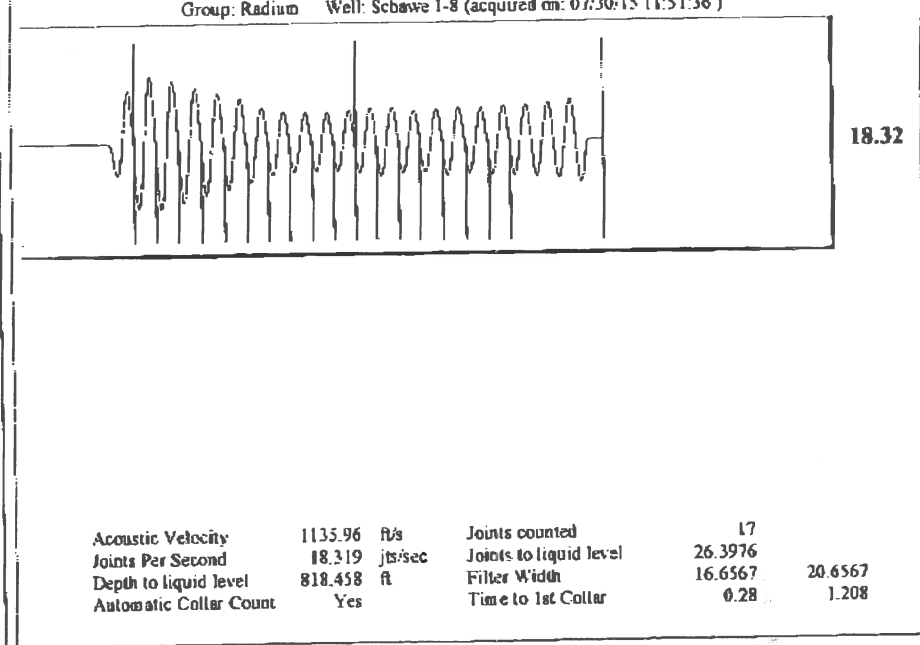
	KCC District Office #1 - 210 E. Frontview, Suite A, Dodge City, KS 67801	Phone 620.225.8888
	KCC District Office #2 / UPGS - 3450 N. Rock Road, Building 600, Suite 601, Wichita, KS 67226	Phone 316.630.4000
	KCC District Office #3 - 1500 SW Seventh Steet, Chanute, KS 66720	Phone 620.432.2300
	KCC District Office #4 - 2301 E. 13th Street, Hays, KS 67601-2651	Phone 785.625.0550

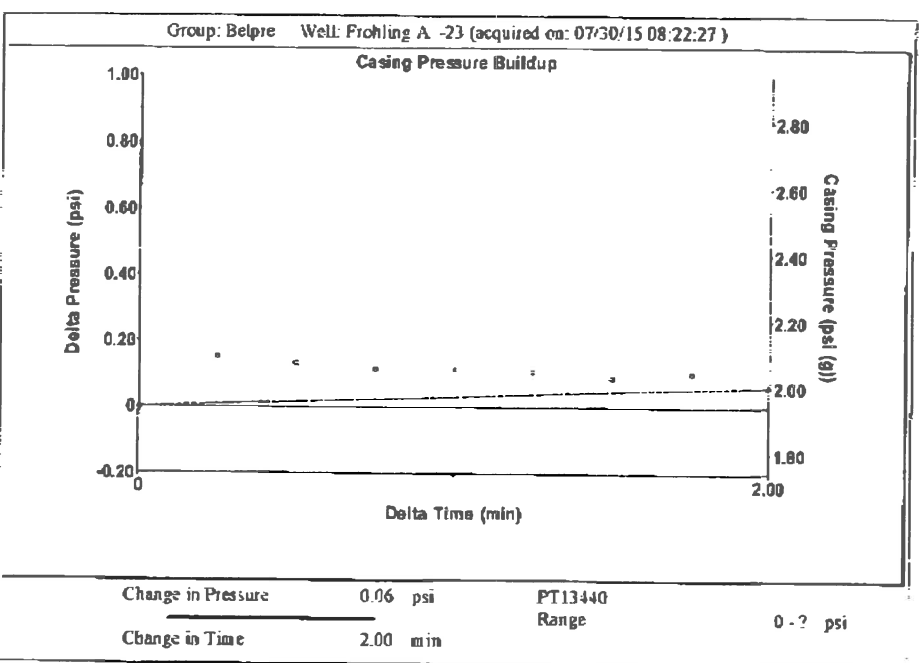
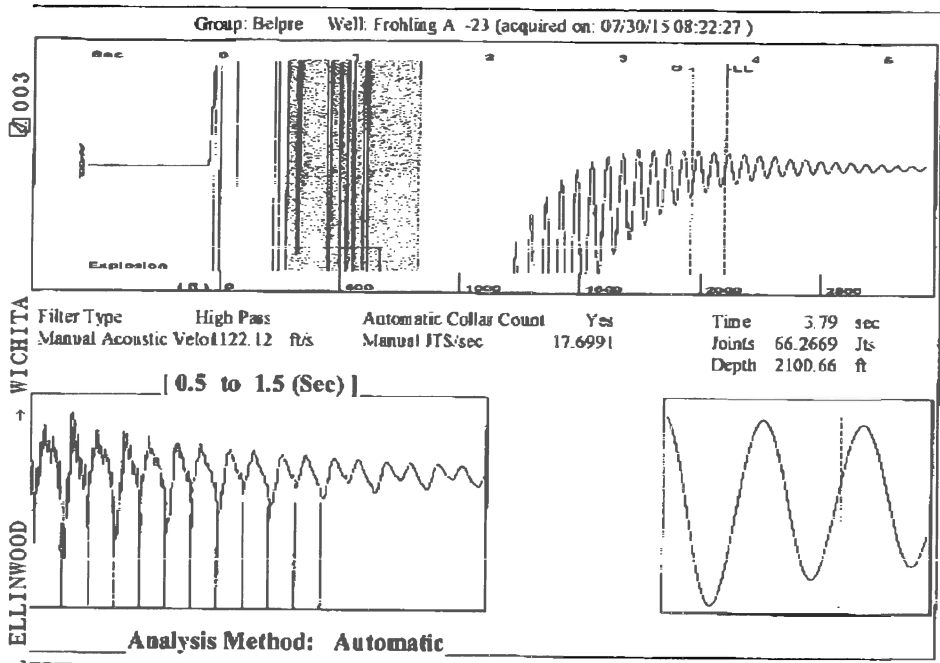
Received Fax : 08/04/2015 19:23 FAX 620 564 2062 Aug 05 2015 7:36AM Fax Station : FG Holl Co. LLC D. 2



Group: Radium Well: Schawe 1-8 (acquired on: 07/30/15 11:51:36)

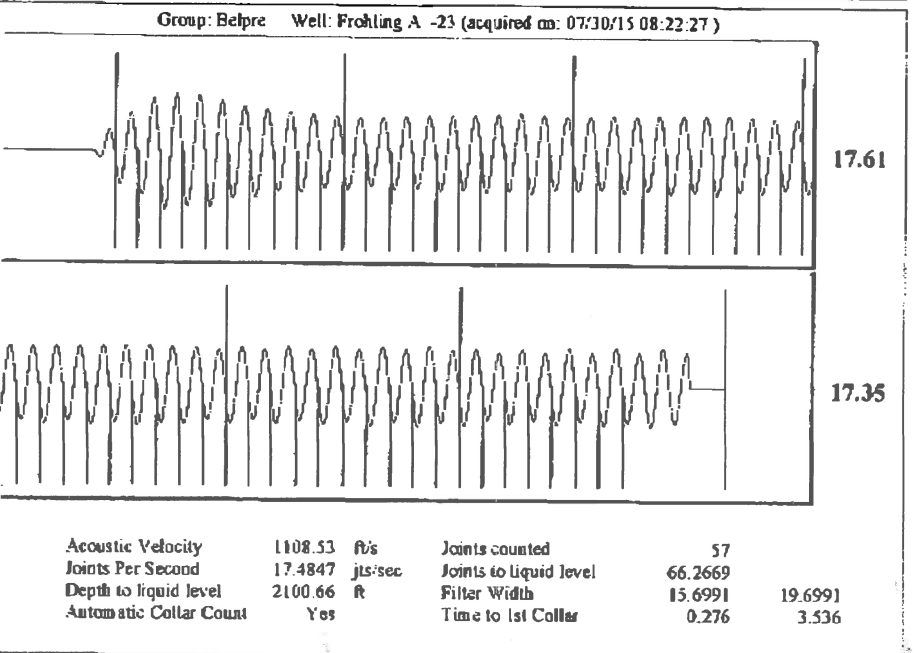
Production Current	Potential	Casing Pressure	Producing
Oil -.-	.-.- BBL/D	3.9 psi (g)	
Water -.-	.-.- BBL/D	Casing Pressure Buildup	Annular Gas Flow
Gas -.-	.-.- Mscf/D	-0.144 psi	0 Mscf/D
		2.00 min	% Liquid
		Gas/Liquid Interface Pressure	100 %
		4.3 psi (g)	
IPR Method	Vogel	Liquid Level Depth	
PBHP/SBHP	-.-	818.46 ft	
Production Efficiency	0.0	Pump Intake Depth	
		-.- ft	
Oil 40 deg API		Formation Depth	
Water 1.05 Sp.Gr.H2O		3611.00 ft	
Gas 0.84 Sp.Gr.AIR			
Acoustic Velocity	1135.96 ft/s		
Formation Submergence			
Total Gaseous Liquid Column HT (TVD)	2793 ft		
Equivalent Gas Free Liquid HT (TVD)	2793 ft		
Acoustic Test			
		Pump Intake	
		-.- psi (g)	
		Producing BHP	
		1273.9 psi (g)	
		Static BHP	
		-.- psi (g)	



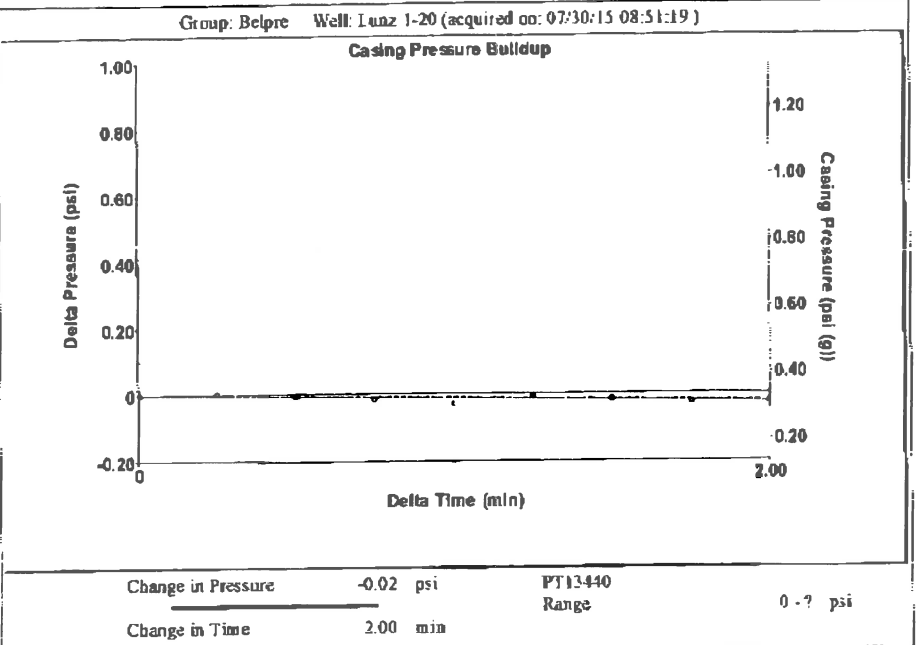
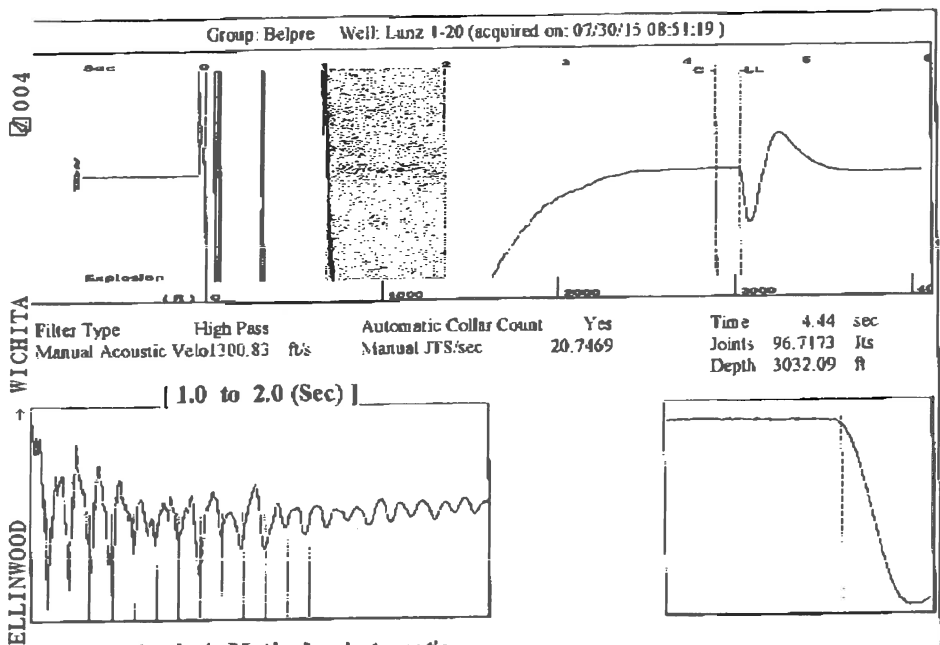


Group: Belpre Well: Frohling A -23 (acquired on: 07/30/15 08:22:27)

Production	Potential	Casing Pressure	Producing
Current		1.9 psi (g)	
Oil -.-	-.- BBL/D	Casing Pressure Buildup	
Water -.-	-.- BBL/D	0.061 psi	
Gas -.-	-.- Mscf/D	2.00 min	
		Gas/Liquid Interface Pressure	
		3.0 psi (g)	
IPR Method	Voget	Liquid Level Depth	
PBHP:SBHP	-.-	2100.66 ft	
Production Efficiency	0.0	Pump Intake Depth	
		2509.00 ft	
		Formation Depth	
		2414.00 ft	
Acoustic Velocity	1108.53 ft/s	Pump Intake	
		141.6 psi (g)	
Formation Submergence		Producing BHP	
Total Gaseous Liquid Column HT (TVD)	408 ft	109.5 psi (g)	
Equivalent Gas Free Liquid HT (TVD)	407 ft	Static BHP	
		-.- psi (g)	
Acoustic Test			



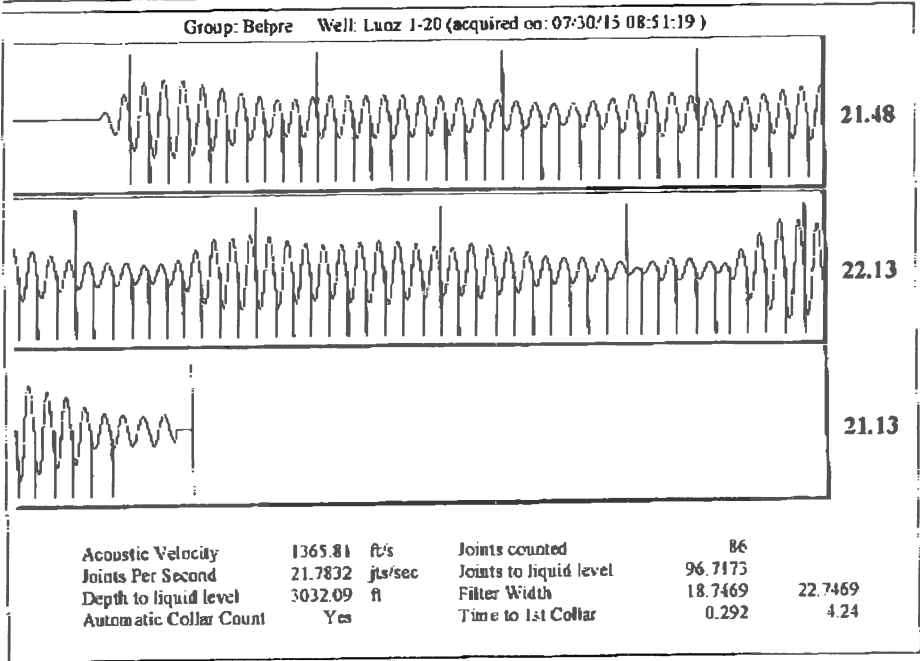
Received Fax : Aug 05 2015 7:36AM Fax Station : FG Holl Co. LLC
 F G HOLL ELLINWOOD WICHITA
 08/04/2015 19:23 FAX 620 564 2062



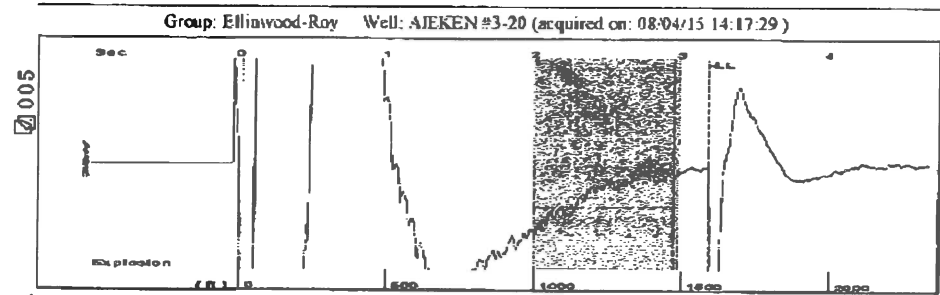
Group: Belpre Well: Lunz 1-20 (acquired on: 07/30/15 08:51:19)

Production Current	Potential	Casing Pressure	Producing
Oil -.-	.-. BBL/D	0.3 psi (g)	
Water -.-	.-. BBL/D	Casing Pressure Buildup	Annular Gas Flow
Gas -.-	.-. Mscf/D	-0.024 psi	0 Mscf/D
		2.00 min	% Liquid
		Gas/Liquid Interface Pressure	100 %
		1.4 psi (g)	
IPR Method Vogel		Liquid Level Depth	
PBHP/SBHP -.-		3032.09 ft	
Production Efficiency 0.0		Pump Intake Depth	
		4327.00 ft	
Oil 40 deg.API		Formation Depth	
Water 1.05 Sp.Gr.H2O		4342.00 ft	
Gas 0.64 Sp.Gr.AIR			
Acoustic Velocity 1365.81 ft/s			
Formation Submergence			
Total Gaseous Liquid Column HT (TVD)	1295 ft		
Equivalent Gas Free Liquid HT (TVD)	1295 ft		
Acoustic Test			

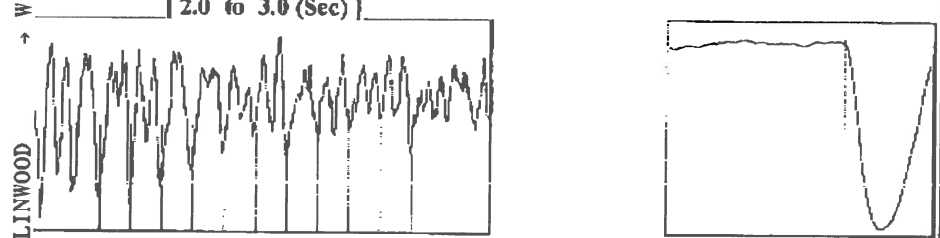
Pump Intake 434.7 psi (g)
 Producing BHP 441.5 psi (g)
 Static BHP -.- psi (g)



Received Fax : Aug 05 2015 7:36AM Fax Station : FG Holl Co., LLC D. 5



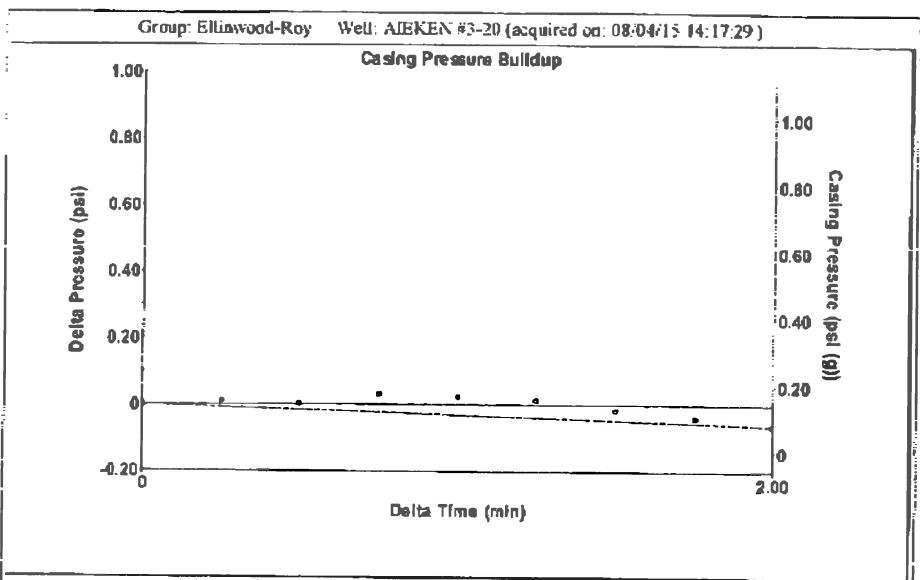
Filter Type High Pass Automatic Collar Count Yes Time 3.191 sec
 Manual Acoustic Velocity 925.547 ft/s Manual JTS/sec 14.5985 Joints 50.1579 Jts
 Depth 1590.01 ft



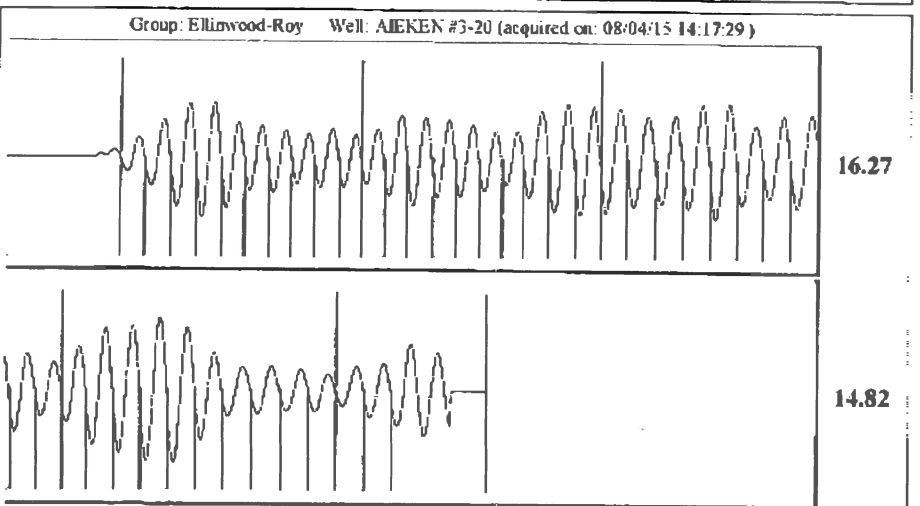
Analysis Method: Automatic

Group: Ellinwood-Roy Well: AIEKEN #3-20 (acquired on: 08/04/15 14:17:29)

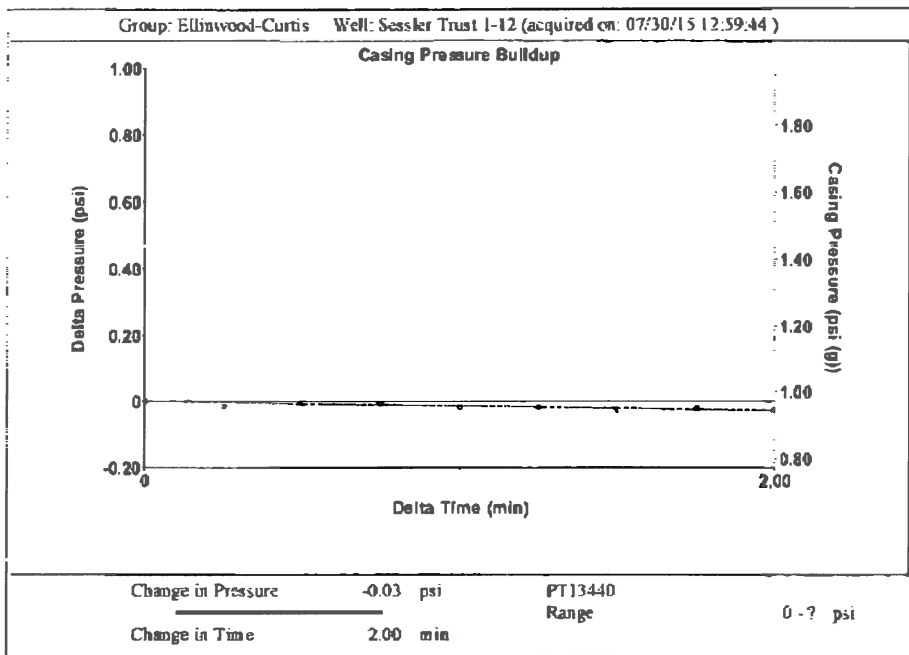
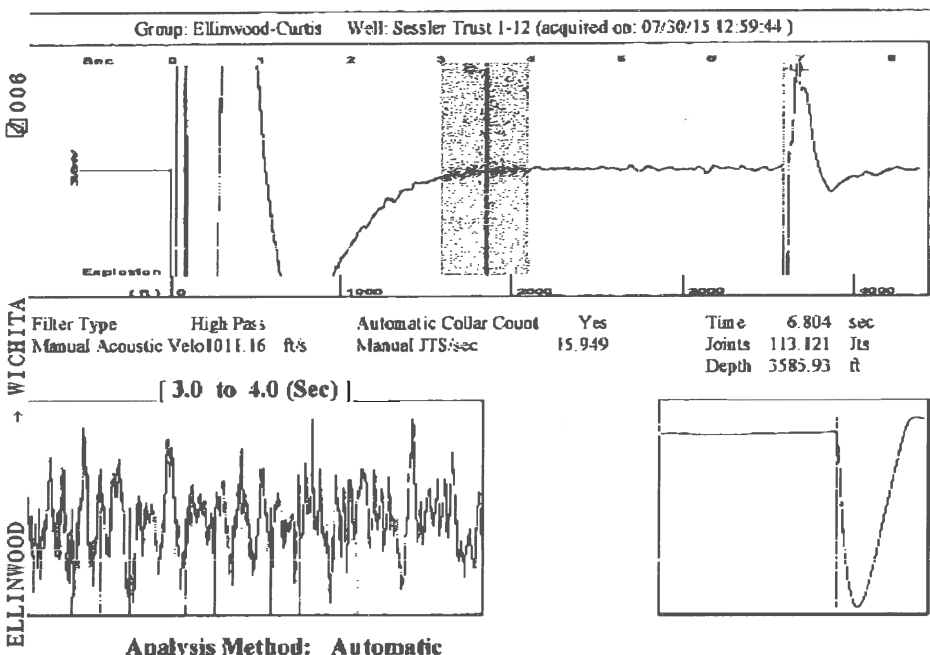
Production	Potential	Casing Pressure	Producing
Oil - - -	- - - BBL/D	0.1 psi (g)	
Water - - -	- - - BBL/D	Casing Pressure Buildup	Annular Gas Flow
Gas - - -	- - - Mscf/D	0.062 psi	0 Mscf/D
		2.00 min	% Liquid
		Gas/Liquid Interface Pressure	100 %
		1.0 psi (g)	
IPR Method	Vogel	Liquid Level Depth	
PBHP/SBHP - - -		1590.01 ft	
Production Efficiency 0.0		Pump Intake Depth	
		3400.00 ft	
Oil 40 deg API		Formation Depth	
Water 1.05 Sp.Gr.H2O		3400.00 ft	
Gas 0.98 Sp.Gr.AIR			
Acoustic Velocity 996.557 ft/s			
		Pump Intake	
		607.9 psi (g)	
Formation Submergence		Producing BHP	
Total Gaseous Liquid Column HT (TVD) 1810 ft		607.9 psi (g)	
Equivalent Gas Free Liquid HT (TVD) 1810 ft		Static BHP	
		- - - psi (g)	



Change in Pressure -0.06 psi PT12440
 Change in Time 2.00 min Range 0 - ? psi



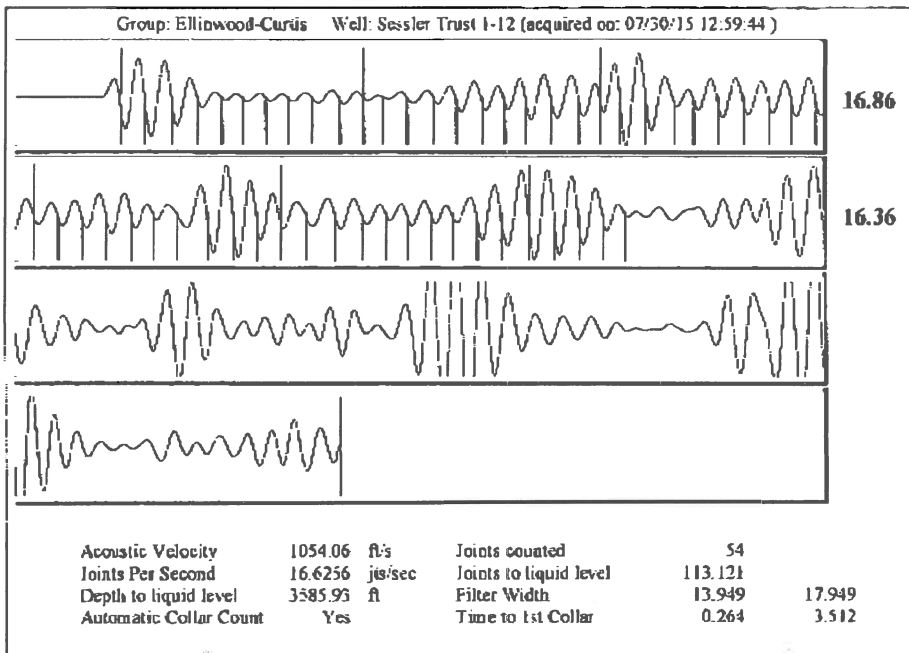
Acoustic Velocity	996.557 ft/s	Joints counted	42
Joints Per Second	15.7186 jts/sec	Joints to liquid level	50.1579
Depth to liquid level	1590.01 ft	Filter Width	12.5985 16.5985
Automatic Collar Count	Yes	Time to 1st Collar	0.28 2.952



Group: Ellinwood-Curtis Well: Sessler Trust 1-12 (acquired on: 07/30/15 12:59:44)

Production Current	Potential	Casing Pressure	Producing
Oil -.-	-.- BBL/D	1.0 psi (g)	
Water -.-	-.- BBL/D	Casing Pressure Buildup	Annular Gas Flow
Gas -.-	-.- Mscf/D	-0.026 psi	0 Mscf/D
		2.00 min	% Liquid
		Gas/Liquid Interface Pressure	100 %
		2.8 psi (g)	
IPR Method	Vogel	Liquid Level Depth	
PBHP/SBHP	-.-	3585.93 ft	
Production Efficiency	0.0	Pump Intake Depth	
		3300.00 ft	
Oil 40 deg.API		Formation Depth	
Water 1.05 Sp.Gr.H2O		3280.00 ft	
Gas 0.94 Sp.Gr.AIR			
Acoustic Velocity	1054.06 ft/s		
Formation Submergence			
Total Gaseous Liquid Column HT (TVD)	-.- ft		
Equivalent Gas Free Liquid HT (TVD)	-.- ft		
Acoustic Test			

Pump Intake: 2.7 psi (g)
 Producing BHP: 2.7 psi (g)
 Static BHP: -.- psi (g)



Conservation Division
District Office No. 1
210 E. Frontview, Suite A
Dodge City, KS 67801



Phone: 620-225-8888
Fax: 620-225-8885
<http://kcc.ks.gov/>

Shari Feist Albrecht, Chair
Jay Scott Emler, Commissioner
Pat Apple, Commissioner

Sam Brownback, Governor

August 11, 2015

Loveness Mpanje
F. G. Holl Company L.L.C.
9431 E CENTRAL STE 100
WICHITA, KS 67206-2563

Re: Temporary Abandonment
API 15-185-23103-00-00
SESSLER TRUST 1-12
NW/4 Sec.12-21S-11W
Stafford County, Kansas

Dear Loveness Mpanje:

"Your temporary abandonment (TA) application for the well listed above has been approved. In accordance with K.A.R. 82-3-111 the TA status of this well will expire 08/11/2016.

- * If you return this well to service or plug it, please notify the District Office.
- * If you sell this well you are required to file a Transfer of Operator form, T-1.
- * If the well will remain temporarily abandoned, you must submit a new TA application, CP-111, before 08/11/2016.

You may contact me at the number above if you have questions.

Very truly yours,

mmaier"