



TEMPORARY ABANDONMENT WELL APPLICATION

All blanks must be complete

OPERATOR: License# _____
Name: _____
Address 1: _____
Address 2: _____
City: _____ State: _____ Zip: _____ + _____
Contact Person: _____
Phone: (_____) _____
Contact Person Email: _____
Field Contact Person: _____
Field Contact Person Phone: (_____) _____

API No. 15- _____
Spot Description: _____
____ - ____ - ____ - ____ Sec. _____ Twp. _____ S. R. _____ E W
_____ feet from N / S Line of Section
_____ feet from E / W Line of Section
GPS Location: Lat: _____, Long: _____
(e.g. xx.xxxxx) (e.g. -xxx.xxxxx)
Datum: NAD27 NAD83 WGS84
County: _____ Elevation: _____ GL KB
Lease Name: _____ Well #: _____
Well Type: (check one) Oil Gas OG WSW Other: _____
 SWD Permit #: _____ ENHR Permit #: _____
 Gas Storage Permit #: _____
Spud Date: _____ Date Shut-In: _____

	Conductor	Surface	Production	Intermediate	Liner	Tubing
Size						
Setting Depth						
Amount of Cement						
Top of Cement						
Bottom of Cement						

Casing Fluid Level from Surface: _____ How Determined? _____ Date: _____
Casing Squeeze(s): _____ to _____ w / _____ sacks of cement, _____ to _____ w / _____ sacks of cement. Date: _____
(top) (bottom) (top) (bottom)
Do you have a valid Oil & Gas Lease? Yes No
Depth and Type: Junk in Hole at _____ (depth) Tools in Hole at _____ (depth) Casing Leaks: Yes No Depth of casing leak(s): _____
Type Completion: ALT. I ALT. II Depth of: DV Tool: _____ w / _____ sacks of cement Port Collar: _____ w / _____ sack of cement
(depth) (depth)
Packer Type: _____ Size: _____ Inch Set at: _____ Feet
Total Depth: _____ Plug Back Depth: _____ Plug Back Method: _____

Geological Data:

Formation Name	Formation Top	Formation Base	Completion Information
1. _____	At: _____	to _____ Feet	Perforation Interval _____ to _____ Feet or Open Hole Interval _____ to _____ Feet
2. _____	At: _____	to _____ Feet	Perforation Interval _____ to _____ Feet or Open Hole Interval _____ to _____ Feet

UNDER PENALTY OF PERJURY I HEREBY ATTEST THAT THE INFORMATION CONTAINED HEREIN IS TRUE AND CORRECT TO THE BEST OF MY KNOWLEDGE

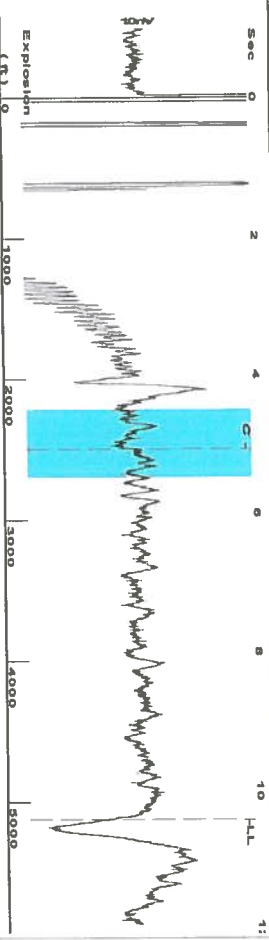
Submitted Electronically

Do NOT Write in This Space - KCC USE ONLY	Date Tested: _____	Results: _____	Date Plugged: _____	Date Repaired: _____	Date Put Back in Service: _____
	Review Completed by: _____ Comments: _____				
TA Approved: <input type="checkbox"/> Yes <input type="checkbox"/> Denied Date: _____					

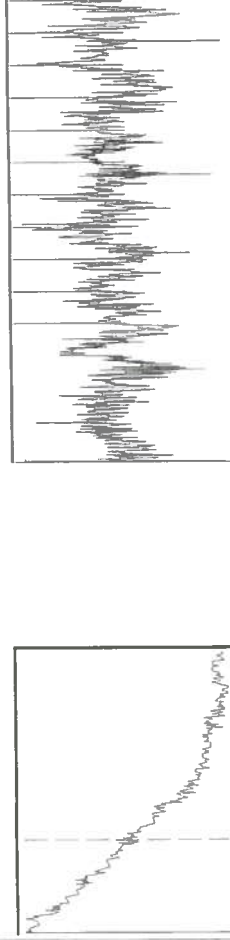
Mail to the Appropriate KCC Conservation Office:

	KCC District Office #1 - 210 E. Frontview, Suite A, Dodge City, KS 67801	Phone 620.225.8888
	KCC District Office #2 / UPGS - 3450 N. Rock Road, Building 600, Suite 601, Wichita, KS 67226	Phone 316.630.4000
	KCC District Office #3 - 1500 SW Seventh Steet, Chanute, KS 66720	Phone 620.432.2300
	KCC District Office #4 - 2301 E. 13th Street, Hays, KS 67601-2651	Phone 785.625.0550

Group: Merit Energy Company-Ulysses Well: Abby Michelle 1-35 (acquired on: 08/20/15 10:32:26)



Filter Type High Pass Automatic Collar Count Yes
 Manual Acoustic Vel 0.956 239 Manual JTS/sec 15.083
 Time 10.422 sec
 Joints 161.751 Jts
 Depth 5127.50 ft

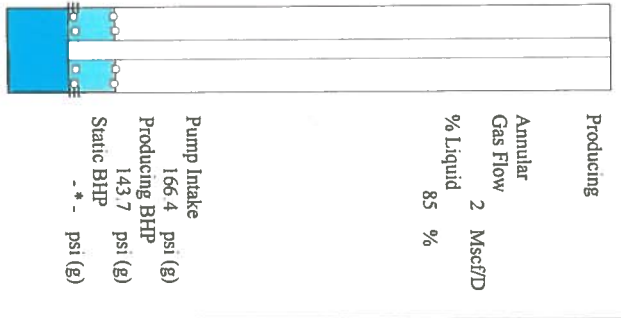


Analysis Method: Automatic

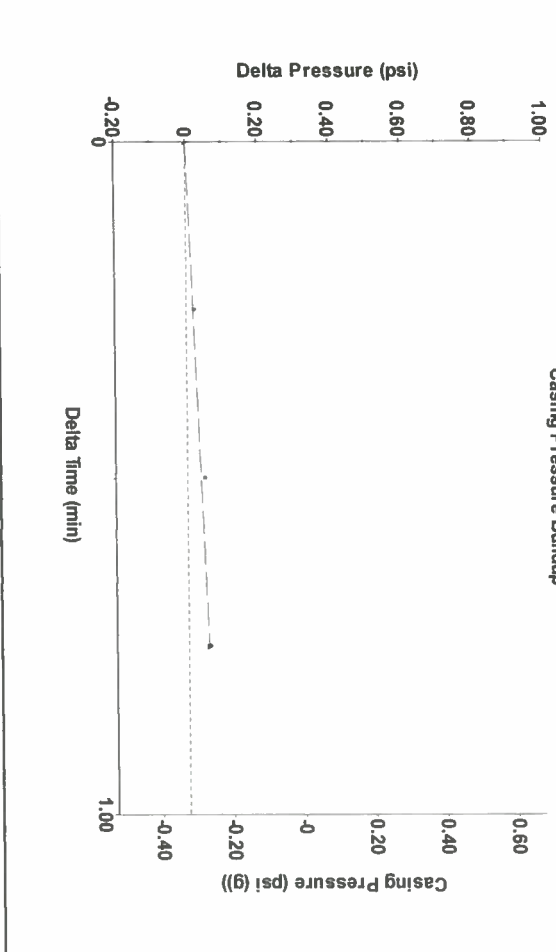
Group: Merit Energy Company-Ulysses Well: Abby Michelle 1-35 (acquired on: 08/20/15 10:32:26)

Production Current	Potential	Casing Pressure	-0.3 psi (g)
Oil -*- BBL/D	Oil -*- BBL/D	Casing Pressure Buildup	0.058 psi
Water -*- Mscf/D	Water -*- Mscf/D	Gas/Liquid Interface Pressure	0.75 min
Gas -*- Mscf/D	Gas -*- Mscf/D	Gas/Liquid Interface Pressure	2.4 psi (g)
IPR Method	Vogel		
PBHP/SBHP	-*- -		
Production Efficiency	0.0		
Oil 40 deg API		Liquid Level Depth	5127.50 ft
Water 1.05 Sp.Gr.H2O		Pump Intake Depth	5680.00 ft
Gas 1.00 Sp.Gr.AIR		Formation Depth	5613.00 ft
Acoustic Velocity	983.977 ft/s		

Formation Submergence	552 ft
Total Gaseous Liquid Column HT (TVD)	480 ft
Equivalent Gas Free Liquid HT (TVD)	
Acoustic Test	
Tim Frydendal-Fluid Level Technician	

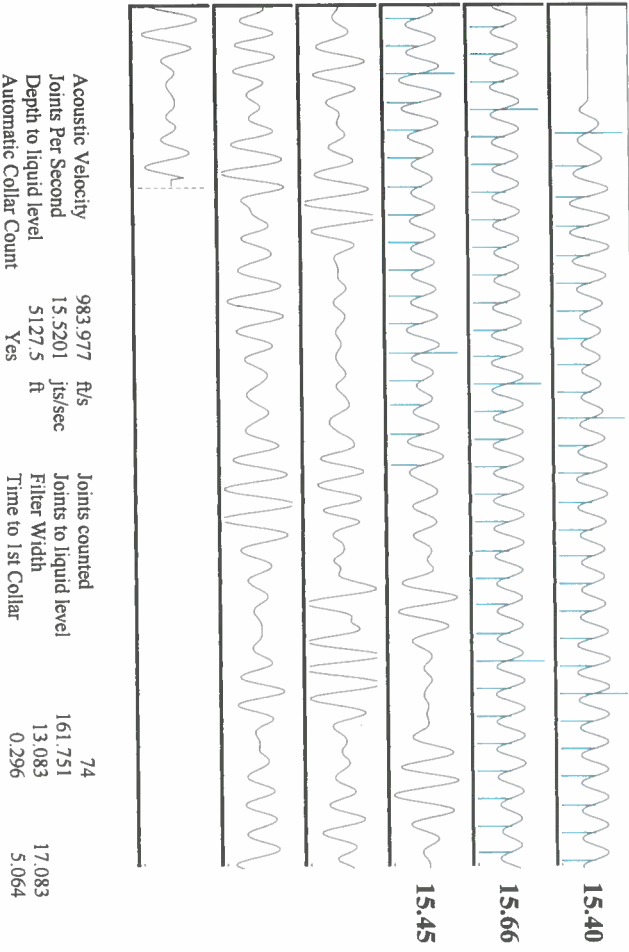


Group: Merit Energy Company-Ulysses Well: Abby Michelle 1-35 (acquired on: 08/20/15 10:32:26)



Change in Pressure 0.06 psi PTT14654
 Change in Time 0.75 min Range 0 - ? psi

Group: Merit Energy Company-Ulysses Well: Abby Michelle 1-35 (acquired on: 08/20/15 10:32:26)



Acoustic Velocity	983.977 ft/s	Joints counted	74
Joints Per Second	15.5201 Jts/sec	Joints to Liquid level	161.751
Depth to liquid level	5127.5 ft	Filter Width	13.083
Automatic Collar Count	Yes	Time to 1st Collar	0.296

Conservation Division
District Office No. 1
210 E. Frontview, Suite A
Dodge City, KS 67801



Phone: 620-225-8888
Fax: 620-225-8885
<http://kcc.ks.gov/>

Shari Feist Albrecht, Chair
Jay Scott Emler, Commissioner
Pat Apple, Commissioner

Sam Brownback, Governor

August 25, 2015

Janna Burton
Merit Energy Company, LLC
13727 NOEL RD STE 1200
DALLAS, TX 75240

Re: Temporary Abandonment
API 15-187-20806-00-00
ABBEY MICHELLE 1-35
NW/4 Sec.35-29S-40W
Stanton County, Kansas

Dear Janna Burton:

"Your temporary abandonment (TA) application for the well listed above has been approved. In accordance with K.A.R. 82-3-111 the TA status of this well will expire 08/25/2016.

- * If you return this well to service or plug it, please notify the District Office.
- * If you sell this well you are required to file a Transfer of Operator form, T-1.
- * If the well will remain temporarily abandoned, you must submit a new TA application, CP-111, before 08/25/2016.

You may contact me at the number above if you have questions.

Very truly yours,

Michael Maier"