



TEMPORARY ABANDONMENT WELL APPLICATION

All blanks must be complete

OPERATOR: License# _____
 Name: _____
 Address 1: _____
 Address 2: _____
 City: _____ State: _____ Zip: _____ + _____
 Contact Person: _____
 Phone: (_____) _____
 Contact Person Email: _____
 Field Contact Person: _____
 Field Contact Person Phone: (_____) _____

API No. 15- _____
 Spot Description: _____
 _____ - _____ - _____ - _____ Sec. _____ Twp. _____ S. R. _____ E W
 _____ feet from N / S Line of Section
 _____ feet from E / W Line of Section
 GPS Location: Lat: _____, Long: _____
(e.g. xx.xxxxx) (e.g. -xxx.xxxxx)
 Datum: NAD27 NAD83 WGS84
 County: _____ Elevation: _____ GL KB
 Lease Name: _____ Well #: _____
 Well Type: (check one) Oil Gas OG WSW Other: _____
 SWD Permit #: _____ ENHR Permit #: _____
 Gas Storage Permit #: _____
 Spud Date: _____ Date Shut-In: _____

	Conductor	Surface	Production	Intermediate	Liner	Tubing
Size						
Setting Depth						
Amount of Cement						
Top of Cement						
Bottom of Cement						

Casing Fluid Level from Surface: _____ How Determined? _____ Date: _____
 Casing Squeeze(s): _____ to _____ w / _____ sacks of cement, _____ to _____ w / _____ sacks of cement. Date: _____
(top) (bottom) (top) (bottom)
 Do you have a valid Oil & Gas Lease? Yes No
 Depth and Type: Junk in Hole at _____ Tools in Hole at _____ Casing Leaks: Yes No Depth of casing leak(s): _____
(depth) (depth)
 Type Completion: ALT. I ALT. II Depth of: DV Tool: _____ w / _____ sacks of cement Port Collar: _____ w / _____ sack of cement
(depth) (depth)
 Packer Type: _____ Size: _____ Inch Set at: _____ Feet
 Total Depth: _____ Plug Back Depth: _____ Plug Back Method: _____

Geological Data:

Formation Name	Formation Top	Formation Base	Completion Information
1. _____	At: _____	to _____ Feet	Perforation Interval _____ to _____ Feet or Open Hole Interval _____ to _____ Feet
2. _____	At: _____	to _____ Feet	Perforation Interval _____ to _____ Feet or Open Hole Interval _____ to _____ Feet

UNDER PENALTY OF PERJURY I HEREBY ATTEST THAT THE INFORMATION CONTAINED HEREIN IS TRUE AND CORRECT TO THE BEST OF MY KNOWLEDGE

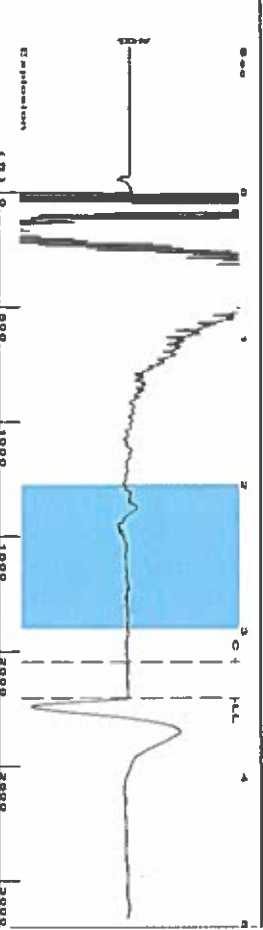
Submitted Electronically

Do NOT Write in This Space - KCC USE ONLY	Date Tested: _____	Results: _____	Date Plugged: _____	Date Repaired: _____	Date Put Back in Service: _____
	Review Completed by: _____ Comments: _____				
TA Approved: <input type="checkbox"/> Yes <input type="checkbox"/> Denied Date: _____					

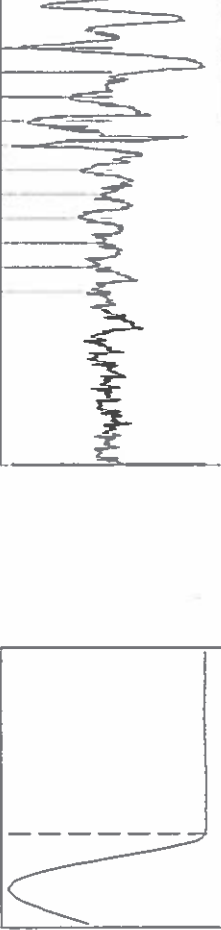
Mail to the Appropriate KCC Conservation Office:

	KCC District Office #1 - 210 E. Frontview, Suite A, Dodge City, KS 67801	Phone 620.225.8888
	KCC District Office #2 / UPGS - 3450 N. Rock Road, Building 600, Suite 601, Wichita, KS 67226	Phone 316.630.4000
	KCC District Office #3 - 1500 SW Seventh Steet, Chanute, KS 66720	Phone 620.432.2300
	KCC District Office #4 - 2301 E. 13th Street, Hays, KS 67601-2651	Phone 785.625.0550

Group: All wells Well: GANO A1 (acquired on: 08/17/15 15:26:40)



Filter Type High Pass Automatic Collar Count Yes
 Manual Acoustic Velo 1233.46 ft/s Manual JTS/sec 19.4553
 Time 3.458 sec
 Joints 69.4898 Jis
 Depth 2202.83 ft

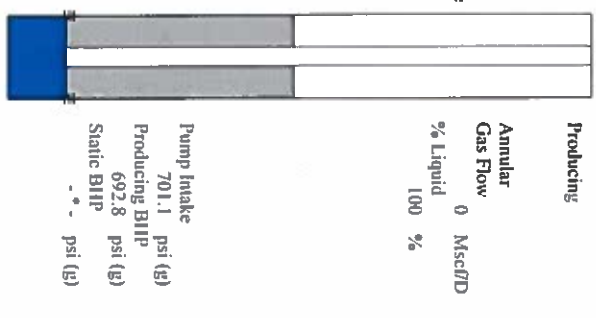


Analysis Method: Automatic

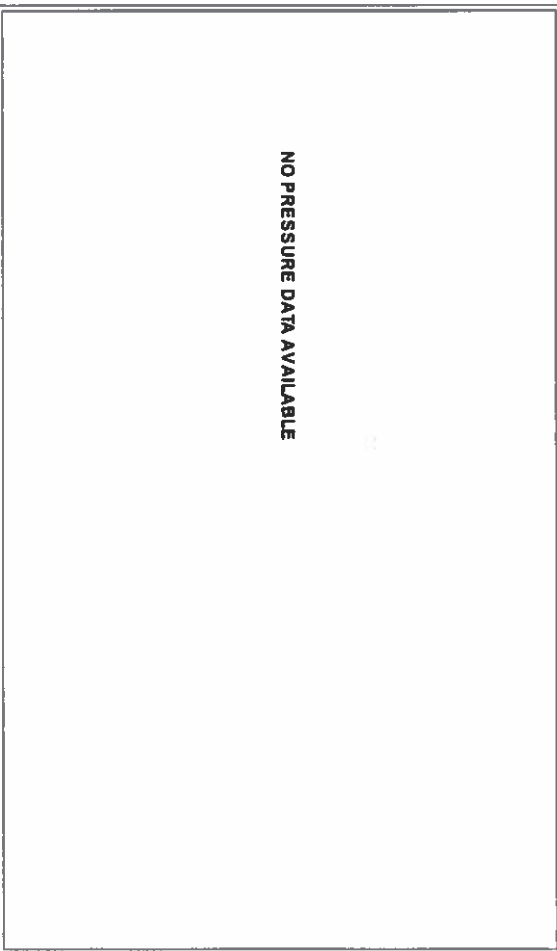
Group: All wells Well: GANO A1 (acquired on: 08/17/15 15:26:40)

Production	Potential	Casing Pressure	Producing
Current	BBL/D	0.0 psi (g)	Annular
Oil	BBL/D		Gas Flow
Water	Mscf/D		0 Mscf/D
Gas			% Liquid
			100 %
IPR Method	Vogel	Gas/Liquid Interface Pressure	
PBHP/SBHP		0.8 psi (g)	
Production Efficiency			
		Liquid Level Depth	
		2202.83 ft	
		Pump Intake Depth	
		4305.00 ft	
		Formation Depth	
		4279.00 ft	

Oil 40 deg-API
 Water 1.05 Sp.Gr:1120
 Gas 0.72 Sp.Gr:AIR
 Acoustic Velocity 1274.05 ft/s
 Formation Submergence
 Total Gaseous Liquid Column HT (TVD) 2102 ft
 Equivalent Gas Free Liquid HT (TVD) 2102 ft
 Acoustic Test

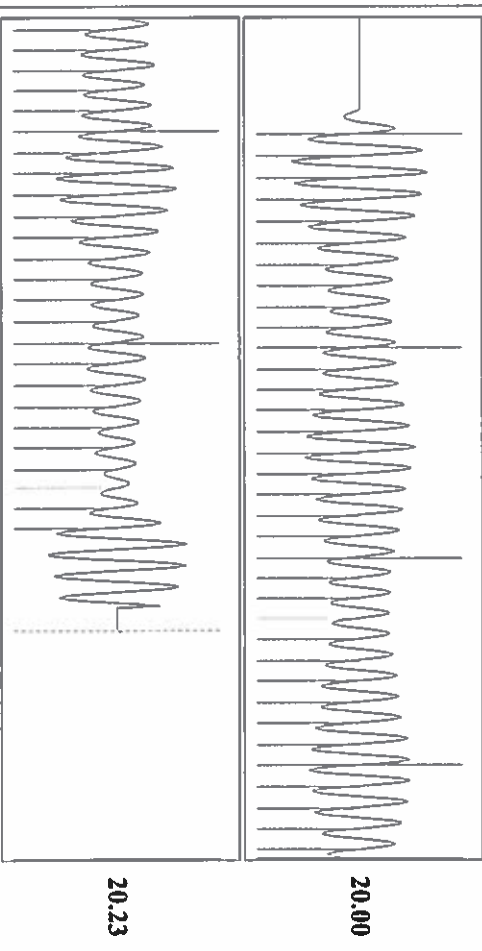


Group: All wells Well: GANO A1 (acquired on: 08/17/15 15:26:40)



Change in Pressure 0.00 psi PT34009
 Change in Time 0.00 min Range 0 - ? psi

Group: All wells Well: GANO A1 (acquired on: 08/17/15 15:26:40)



Acoustic Velocity 1274.05 ft/s Joints counted 59
 Joints Per Second 20.0954 Jis/Sec Joints to liquid level 69.4898
 Depth to liquid level 2202.83 ft Filter Width 17.4553
 Automatic Collar Count Yes Time to 1st Collar 0.276 3.212

Conservation Division
District Office No. 1
210 E. Frontview, Suite A
Dodge City, KS 67801



Phone: 620-225-8888
Fax: 620-225-8885
<http://kcc.ks.gov/>

Shari Feist Albrecht, Chair
Jay Scott Emler, Commissioner
Pat Apple, Commissioner

Sam Brownback, Governor

August 25, 2015

Shawn Hildreth
Linn Operating, Inc.
600 TRAVIS STE 5100
HOUSTON, TX 77002-3018

Re: Temporary Abandonment
API 15-175-30076-00-03
GANO A 1
SW/4 Sec.35-32S-31W
Seward County, Kansas

Dear Shawn Hildreth:

"Your temporary abandonment (TA) application for the well listed above has been approved. In accordance with K.A.R. 82-3-111 the TA status of this well will expire 08/25/2016.

- * If you return this well to service or plug it, please notify the District Office.
- * If you sell this well you are required to file a Transfer of Operator form, T-1.
- * If the well will remain temporarily abandoned, you must submit a new TA application, CP-111, before 08/25/2016.

You may contact me at the number above if you have questions.

Very truly yours,

Michael Maier"