



**TEMPORARY ABANDONMENT WELL APPLICATION**

All blanks must be complete

OPERATOR: License# \_\_\_\_\_  
 Name: \_\_\_\_\_  
 Address 1: \_\_\_\_\_  
 Address 2: \_\_\_\_\_  
 City: \_\_\_\_\_ State: \_\_\_\_\_ Zip: \_\_\_\_\_ + \_\_\_\_\_  
 Contact Person: \_\_\_\_\_  
 Phone: ( \_\_\_\_\_ ) \_\_\_\_\_  
 Contact Person Email: \_\_\_\_\_  
 Field Contact Person: \_\_\_\_\_  
 Field Contact Person Phone: ( \_\_\_\_\_ ) \_\_\_\_\_

API No. 15- \_\_\_\_\_  
 Spot Description: \_\_\_\_\_  
 \_\_\_\_\_ - \_\_\_\_\_ - \_\_\_\_\_ - \_\_\_\_\_ Sec. \_\_\_\_\_ Twp. \_\_\_\_\_ S. R. \_\_\_\_\_  E  W  
 \_\_\_\_\_ feet from  N /  S Line of Section  
 \_\_\_\_\_ feet from  E /  W Line of Section  
 GPS Location: Lat: \_\_\_\_\_, Long: \_\_\_\_\_  
(e.g. xx.xxxxx) (e.g. -xxx.xxxxx)  
 Datum:  NAD27  NAD83  WGS84  
 County: \_\_\_\_\_ Elevation: \_\_\_\_\_  GL  KB  
 Lease Name: \_\_\_\_\_ Well #: \_\_\_\_\_  
 Well Type: (check one)  Oil  Gas  OG  WSW  Other: \_\_\_\_\_  
 SWD Permit #: \_\_\_\_\_  ENHR Permit #: \_\_\_\_\_  
 Gas Storage Permit #: \_\_\_\_\_  
 Spud Date: \_\_\_\_\_ Date Shut-In: \_\_\_\_\_

	Conductor	Surface	Production	Intermediate	Liner	Tubing
Size						
Setting Depth						
Amount of Cement						
Top of Cement						
Bottom of Cement						

Casing Fluid Level from Surface: \_\_\_\_\_ How Determined? \_\_\_\_\_ Date: \_\_\_\_\_  
 Casing Squeeze(s): \_\_\_\_\_ to \_\_\_\_\_ w / \_\_\_\_\_ sacks of cement, \_\_\_\_\_ to \_\_\_\_\_ w / \_\_\_\_\_ sacks of cement. Date: \_\_\_\_\_  
(top) (bottom) (top) (bottom)  
 Do you have a valid Oil & Gas Lease?  Yes  No  
 Depth and Type:  Junk in Hole at \_\_\_\_\_  Tools in Hole at \_\_\_\_\_ Casing Leaks:  Yes  No Depth of casing leak(s): \_\_\_\_\_  
(depth) (depth)  
 Type Completion:  ALT. I  ALT. II Depth of:  DV Tool: \_\_\_\_\_ w / \_\_\_\_\_ sacks of cement  Port Collar: \_\_\_\_\_ w / \_\_\_\_\_ sack of cement  
(depth) (depth)  
 Packer Type: \_\_\_\_\_ Size: \_\_\_\_\_ Inch Set at: \_\_\_\_\_ Feet  
 Total Depth: \_\_\_\_\_ Plug Back Depth: \_\_\_\_\_ Plug Back Method: \_\_\_\_\_

**Geological Data:**

Formation Name	Formation Top	Formation Base	Completion Information
1. _____	At: _____	to _____ Feet	Perforation Interval _____ to _____ Feet or Open Hole Interval _____ to _____ Feet
2. _____	At: _____	to _____ Feet	Perforation Interval _____ to _____ Feet or Open Hole Interval _____ to _____ Feet

UNDER PENALTY OF PERJURY I HEREBY ATTEST THAT THE INFORMATION CONTAINED HEREIN IS TRUE AND CORRECT TO THE BEST OF MY KNOWLEDGE

Submitted Electronically

<b>Do NOT Write in This Space - KCC USE ONLY</b>	Date Tested: _____	Results: _____	Date Plugged: _____	Date Repaired: _____	Date Put Back in Service: _____
	Review Completed by: _____ Comments: _____				
TA Approved: <input type="checkbox"/> Yes <input type="checkbox"/> Denied Date: _____					

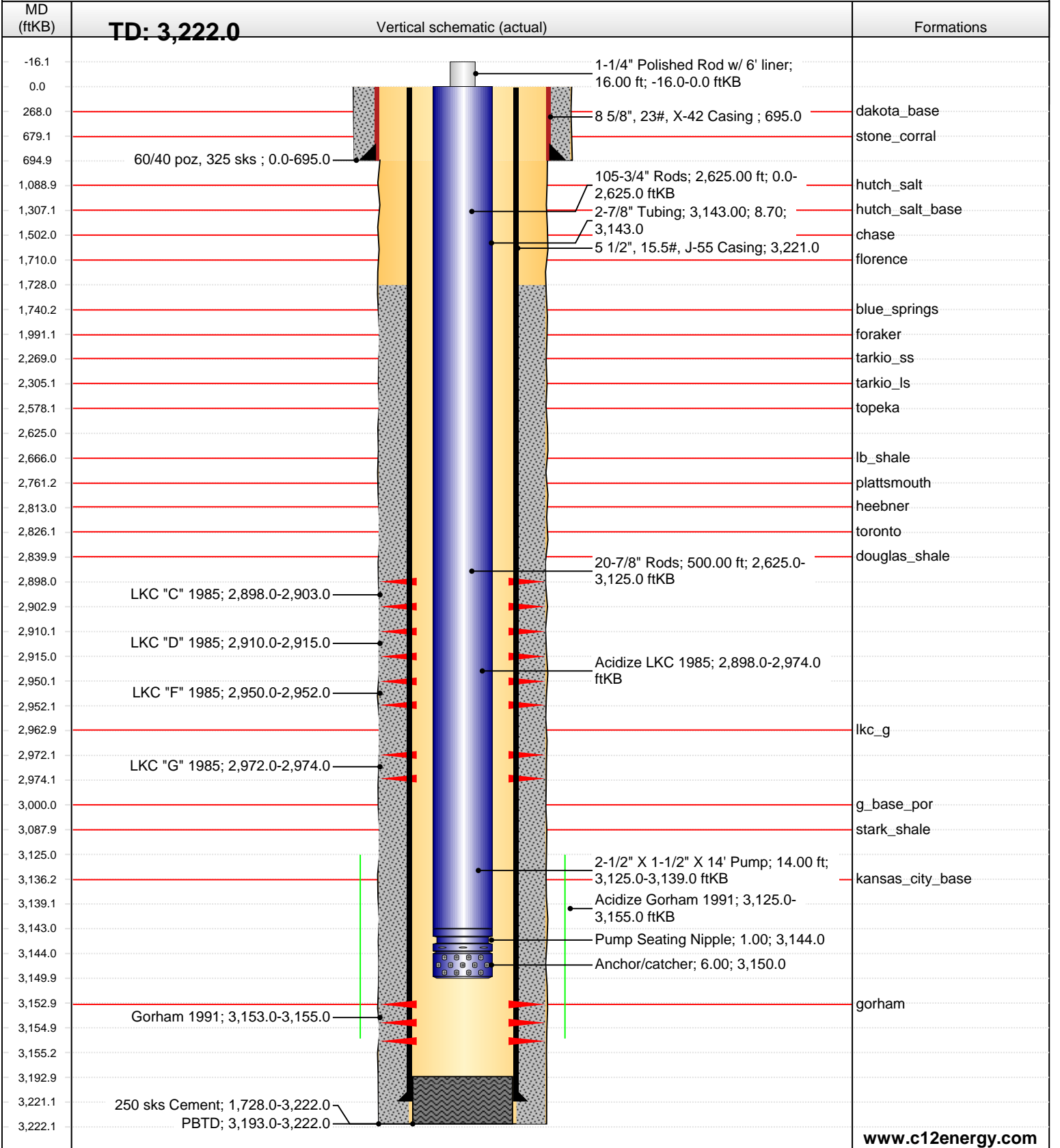
**Mail to the Appropriate KCC Conservation Office:**

	KCC District Office #1 - 210 E. Frontview, Suite A, Dodge City, KS 67801	Phone 620.225.8888
	KCC District Office #2 / UPGS - 3450 N. Rock Road, Building 600, Suite 601, Wichita, KS 67226	Phone 316.630.4000
	KCC District Office #3 - 1500 SW Seventh Steet, Chanute, KS 66720	Phone 620.432.2300
	KCC District Office #4 - 2301 E. 13th Street, Hays, KS 67601-2651	Phone 785.625.0550

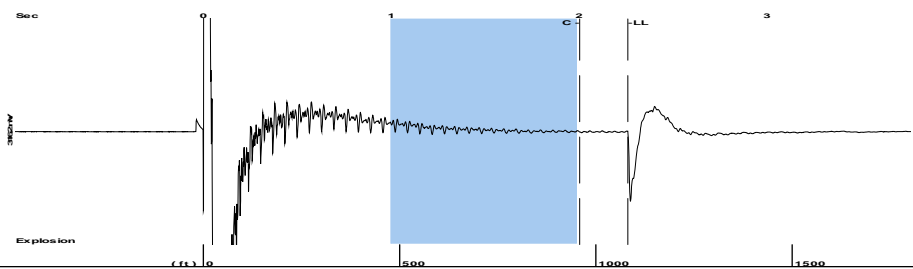
API/UWI 15-167-22679	User Text 1 Continental Operating Co.	Operator C12: Kansas Oil, LLC	Well Status Pumping Oil	Orig KB Elev (ft) 1,748.00
Rig Release Date 11/14/1985	Abandon Date 1/1/1900	Latitude (°) 38° 47' 50.38" N	Longitude (°) 98° 48' 0.683" W	Surface Legal Location 14S 13W Sec 31 S2 NE NE NE

Comment  
 IHS 297 Well Data Import  
 Formation at total depth: 159cmbr  
 Producing formation: 405Insg  
 Initial well class: 6  
 Final well class: 1

Original Hole, 8/25/2015 1:51:00 PM

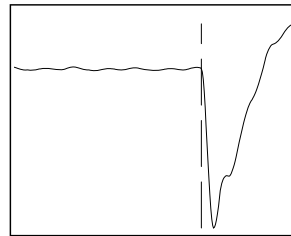
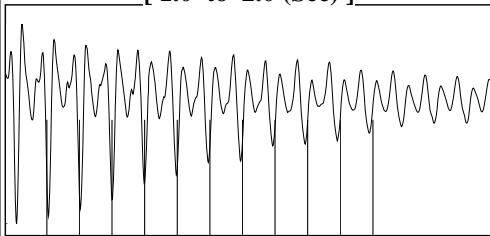


Group: G Miller Well: G Miller 18 (acquired on: 05/26/15 14:03:56)



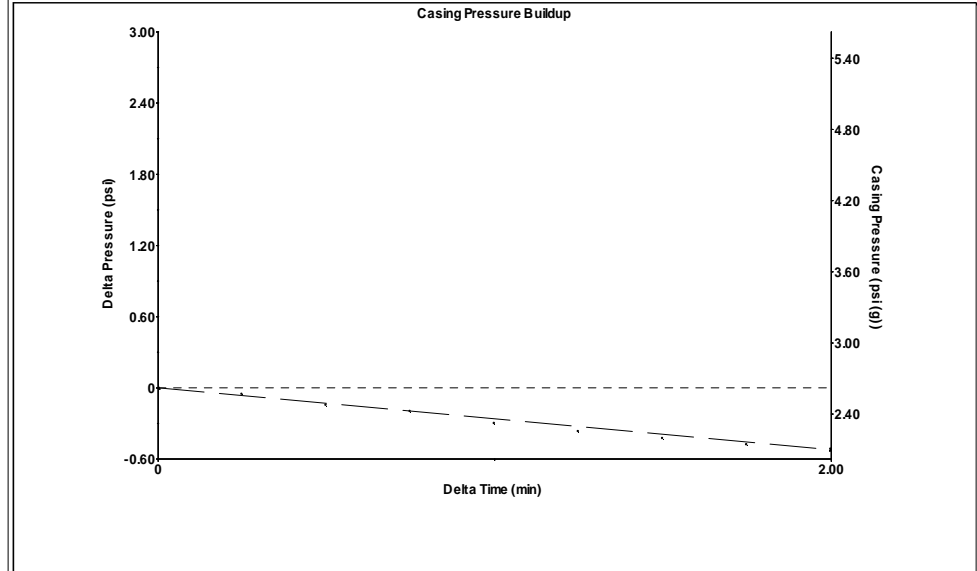
Filter Type High Pass Automatic Collar Count Yes Time 2.261 sec  
 Manual Acoustic Velo 940.299 ft/s Manual JTS/sec 14.9254 Joints 34.3376 Jts  
 Depth 1081.63 ft

[ 1.0 to 2.0 (Sec) ]



**Analysis Method: Automatic**

Group: G Miller Well: G Miller 18 (acquired on: 05/26/15 14:03:56)

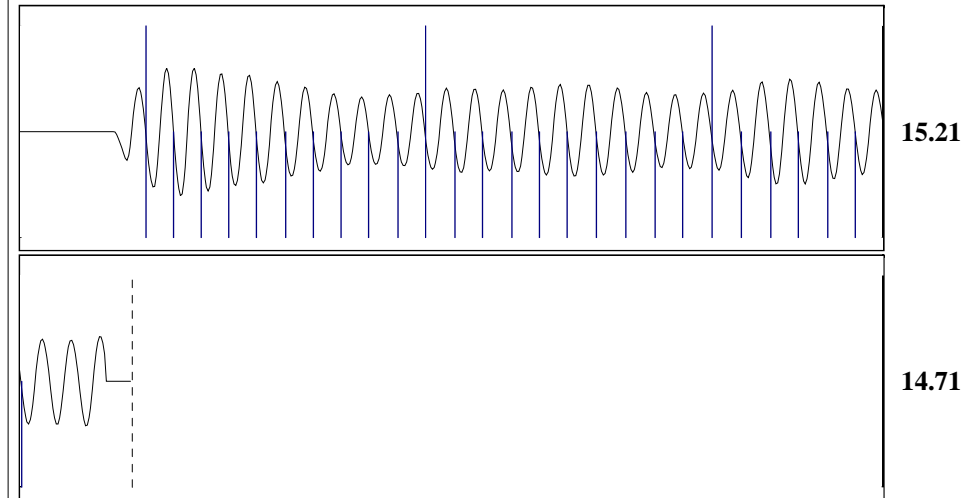


Change in Pressure -0.52 psi PT 15086  
 Change in Time 2.00 min Range 0 - ? psi

Group: G Miller Well: G Miller 18 (acquired on: 05/26/15 14:03:56)

<b>Production</b>	<b>Potential</b>	<b>Casing Pressure</b>		<b>Producing</b>
Current	- * - BBL/D	2.6 psi (g)		Annular Gas Flow
Oil 0	- * - BBL/D	Casing Pressure Buildup		0 Mscf/D
Water 130	- * - Mscf/D	-0.522 psi		% Liquid
Gas - * -		2.00 min		100 %
<b>IPR Method</b>	<b>Vogel</b>	Gas/Liquid Interface Pressure		
PBHP/SBHP	- * -	3.3 psi (g)		
Production Efficiency	0.0	Liquid Level Depth		
Oil 37 deg.API		1081.63 ft		
Water 1.073 Sp.Gr.H2O		Pump Intake Depth		
Gas 1.01 Sp.Gr.AIR		3150.00 ft		
Acoustic Velocity	956.776 ft/s	Formation Depth		
		3155.00 ft		
<b>Formation Submergence</b>		Pump Intake		
Total Gaseous Liquid Column HT (TVD)	2068 ft	964.3 psi (g)		
Equivalent Gas Free Liquid HT (TVD)	2068 ft	Producing BHP		
		966.6 psi (g)		
Acoustic Test, static, well shut-in 4/2/15		Static BHP		
		964.3 psi (g)		

Group: G Miller Well: G Miller 18 (acquired on: 05/26/15 14:03:56)



Acoustic Velocity 956.776 ft/s Joints counted 26  
 Joints Per Second 15.1869 jts/sec Joints to liquid level 34.3376  
 Depth to liquid level 1081.63 ft Filter Width 12.9254 16.9254  
 Automatic Collar Count Yes Time to 1st Collar 0.292 2.004

Conservation Division  
District Office No. 4  
2301 E. 13th Street  
Hays, KS 67601-2651



Phone: 785-625-0550  
Fax: 785-625-0564  
<http://kcc.ks.gov/>

Shari Feist Albrecht, Chair  
Jay Scott Emler, Commissioner  
Pat Apple, Commissioner

Sam Brownback, Governor

August 28, 2015

Kate Ryan  
C12 Kansas Oil, LLC  
1900 WAZEE ST.  
SUITE 200  
DENVER, CO 80202

Re: Temporary Abandonment  
API 15-167-22679-00-00  
G MILLER 18-31  
NE/4 Sec.31-14S-13W  
Russell County, Kansas

Dear Kate Ryan:

"Your temporary abandonment (TA) application for the well listed above has been approved. In accordance with K.A.R. 82-3-111 the TA status of this well will expire 08/28/2016.

- \* If you return this well to service or plug it, please notify the District Office.
- \* If you sell this well you are required to file a Transfer of Operator form, T-1.
- \* If the well will remain temporarily abandoned, you must submit a new TA application, CP-111, before 08/28/2016.

You may contact me at the number above if you have questions.

Very truly yours,

RICHARD WILLIAMS"