



**TEMPORARY ABANDONMENT WELL APPLICATION**

All blanks must be complete

OPERATOR: License# \_\_\_\_\_  
 Name: \_\_\_\_\_  
 Address 1: \_\_\_\_\_  
 Address 2: \_\_\_\_\_  
 City: \_\_\_\_\_ State: \_\_\_\_\_ Zip: \_\_\_\_\_ + \_\_\_\_\_  
 Contact Person: \_\_\_\_\_  
 Phone: ( \_\_\_\_\_ ) \_\_\_\_\_  
 Contact Person Email: \_\_\_\_\_  
 Field Contact Person: \_\_\_\_\_  
 Field Contact Person Phone: ( \_\_\_\_\_ ) \_\_\_\_\_

API No. 15- \_\_\_\_\_  
 Spot Description: \_\_\_\_\_  
 \_\_\_\_\_ - \_\_\_\_\_ - \_\_\_\_\_ - \_\_\_\_\_ Sec. \_\_\_\_\_ Twp. \_\_\_\_\_ S. R. \_\_\_\_\_  E  W  
 \_\_\_\_\_ feet from  N /  S Line of Section  
 \_\_\_\_\_ feet from  E /  W Line of Section  
 GPS Location: Lat: \_\_\_\_\_, Long: \_\_\_\_\_  
(e.g. xx.xxxxx) (e.g. -xxx.xxxxx)  
 Datum:  NAD27  NAD83  WGS84  
 County: \_\_\_\_\_ Elevation: \_\_\_\_\_  GL  KB  
 Lease Name: \_\_\_\_\_ Well #: \_\_\_\_\_  
 Well Type: (check one)  Oil  Gas  OG  WSW  Other: \_\_\_\_\_  
 SWD Permit #: \_\_\_\_\_  ENHR Permit #: \_\_\_\_\_  
 Gas Storage Permit #: \_\_\_\_\_  
 Spud Date: \_\_\_\_\_ Date Shut-In: \_\_\_\_\_

|                  | Conductor | Surface | Production | Intermediate | Liner | Tubing |
|------------------|-----------|---------|------------|--------------|-------|--------|
| Size             |           |         |            |              |       |        |
| Setting Depth    |           |         |            |              |       |        |
| Amount of Cement |           |         |            |              |       |        |
| Top of Cement    |           |         |            |              |       |        |
| Bottom of Cement |           |         |            |              |       |        |

Casing Fluid Level from Surface: \_\_\_\_\_ How Determined? \_\_\_\_\_ Date: \_\_\_\_\_  
 Casing Squeeze(s): \_\_\_\_\_ to \_\_\_\_\_ w / \_\_\_\_\_ sacks of cement, \_\_\_\_\_ to \_\_\_\_\_ w / \_\_\_\_\_ sacks of cement. Date: \_\_\_\_\_  
(top) (bottom) (top) (bottom)  
 Do you have a valid Oil & Gas Lease?  Yes  No  
 Depth and Type:  Junk in Hole at \_\_\_\_\_  Tools in Hole at \_\_\_\_\_ Casing Leaks:  Yes  No Depth of casing leak(s): \_\_\_\_\_  
(depth) (depth)  
 Type Completion:  ALT. I  ALT. II Depth of:  DV Tool: \_\_\_\_\_ w / \_\_\_\_\_ sacks of cement  Port Collar: \_\_\_\_\_ w / \_\_\_\_\_ sack of cement  
(depth) (depth)  
 Packer Type: \_\_\_\_\_ Size: \_\_\_\_\_ Inch Set at: \_\_\_\_\_ Feet  
 Total Depth: \_\_\_\_\_ Plug Back Depth: \_\_\_\_\_ Plug Back Method: \_\_\_\_\_

**Geological Data:**

| Formation Name | Formation Top | Formation Base | Completion Information   |
|----------------|---------------|----------------|--|
| 1. _____       | At: _____     | to _____ Feet  | Perforation Interval _____ to _____ Feet or Open Hole Interval _____ to _____ Feet |
| 2. _____       | At: _____     | to _____ Feet  | Perforation Interval _____ to _____ Feet or Open Hole Interval _____ to _____ Feet |

UNDER PENALTY OF PERJURY I HEREBY ATTEST THAT THE INFORMATION CONTAINED HEREIN IS TRUE AND CORRECT TO THE BEST OF MY KNOWLEDGE

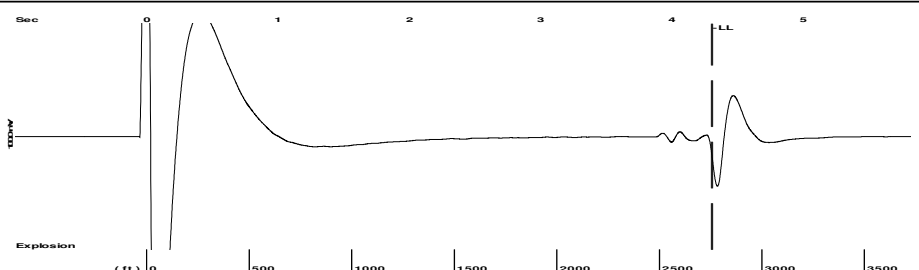
Submitted Electronically

|   |  |                |                     |                      |                                 |
|---|--|----------------|---------------------|----------------------|---------------------------------|
| <b>Do NOT Write in This Space - KCC USE ONLY</b>                                      | Date Tested: _____                         | Results: _____ | Date Plugged: _____ | Date Repaired: _____ | Date Put Back in Service: _____ |
|   | Review Completed by: _____ Comments: _____ |                |                     |                      |                                 |
| TA Approved: <input type="checkbox"/> Yes <input type="checkbox"/> Denied Date: _____ |  |                |                     |                      |                                 |

**Mail to the Appropriate KCC Conservation Office:**

|  |   |                    |
|--|---|--------------------|
|  | KCC District Office #1 - 210 E. Frontview, Suite A, Dodge City, KS 67801                      | Phone 620.225.8888 |
|  | KCC District Office #2 / UPGS - 3450 N. Rock Road, Building 600, Suite 601, Wichita, KS 67226 | Phone 316.630.4000 |
|  | KCC District Office #3 - 1500 SW Seventh Steet, Chanute, KS 66720                             | Phone 620.432.2300 |
|  | KCC District Office #4 - 2301 E. 13th Street, Hays, KS 67601-2651                             | Phone 785.625.0550 |

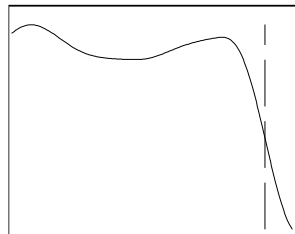
Group: MyWells Well: Youngren 2-15 (Pioneer) (acquired on: 08/27/15 14:14:24 )



Time 4.312 sec  
 Joints 87.0545 Jts  
 Depth 2759.63 ft

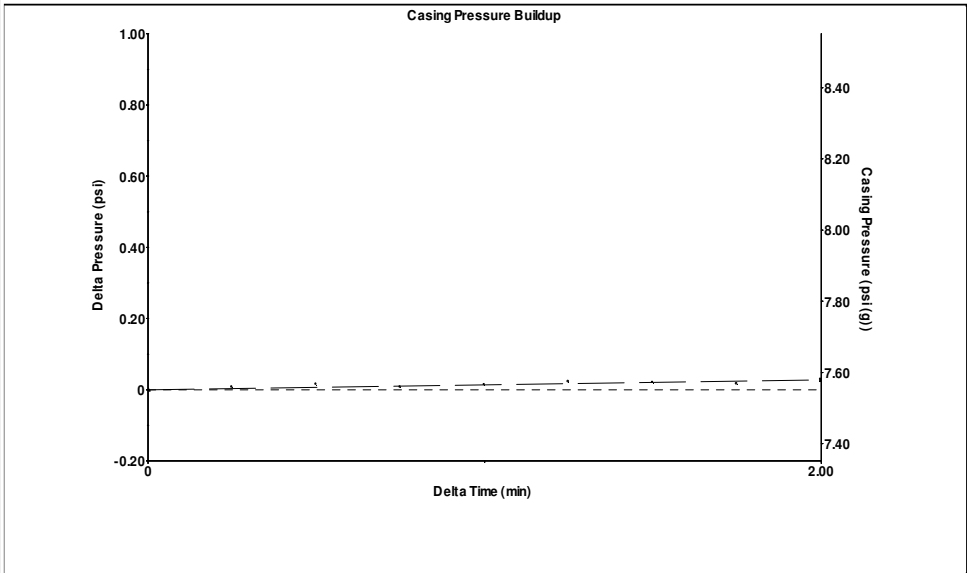
Liquid level calculated with user supplied Acoustic Velocity

Acoustic Velocity 1279.98 ft/s



**Analysis Method: Acoustic Velocity**

Group: MyWells Well: Youngren 2-15 (Pioneer) (acquired on: 08/27/15 14:14:24 )



Change in Pressure 0.03 psi PT8525  
 Change in Time 2.00 min Range 0 - ? psi

Group: MyWells Well: Youngren 2-15 (Pioneer) (acquired on: 08/27/15 14:14:24 )

|                                      |              |                               |                  |
|--------------------------------------|--------------|-------------------------------|------------------|
| Production Current                   | Potential    | Casing Pressure               | Producing        |
| Oil - * -                            | - * - BBL/D  | 7.6 psi (g)                   |                  |
| Water - * -                          | - * - BBL/D  | Casing Pressure Buildup       | Annular Gas Flow |
| Gas - * -                            | - * - Mscf/D | 0.028 psi                     | - * - Mscf/D     |
|                                      |              | 2.00 min                      | % Liquid         |
| IPR Method                           | Vogel        | Gas/Liquid Interface Pressure | 100 %            |
| PBHP/SBHP                            | - * -        | 9.1 psi (g)                   |                  |
| Production Efficiency                | 0.0          |                               |                  |
| Oil 40 deg.API                       |              | Liquid Level Depth            |                  |
| Water 1.05 Sp.Gr.H2O                 |              | 2759.63 ft                    |                  |
| Gas 0.73 Sp.Gr.AIR                   |              | Tubing Intake Depth           |                  |
|                                      |              | - * - ft                      |                  |
| Acoustic Velocity 1279.98 ft/s       |              | Formation Depth               |                  |
|                                      |              | 2723.00 ft                    |                  |
| Formation Submergence                |              |                               | Tubing Intake    |
| Total Gaseous Liquid Column HT (TVD) | - * - ft     |                               | - * - psi (g)    |
| Equivalent Gas Free Liquid HT (TVD)  | - * - ft     |                               | Producing BHP    |
|                                      |              |                               | 9.1 psi (g)      |
| Acoustic Test                        |              |                               | Static BHP       |
|                                      |              |                               | - * - psi (g)    |

Group: MyWells Well: Youngren 2-15 (Pioneer) (acquired on: 08/27/15 14:14:24 )

**Entered Acoustic Velocity for Liquid Level depth determination**

Group: MyWells Well: Youngren 2-15 (Pioneer) (acquired on: 08/27/15 14:14:24 )

Production  
 Current Potential  
 Oil - \* - - \* - BBL/D  
 Water - \* - - \* - BBL/D  
 Gas - \* - - \* - Mscf/D

Based on SBHP psi (g)

IPR Method Vogel

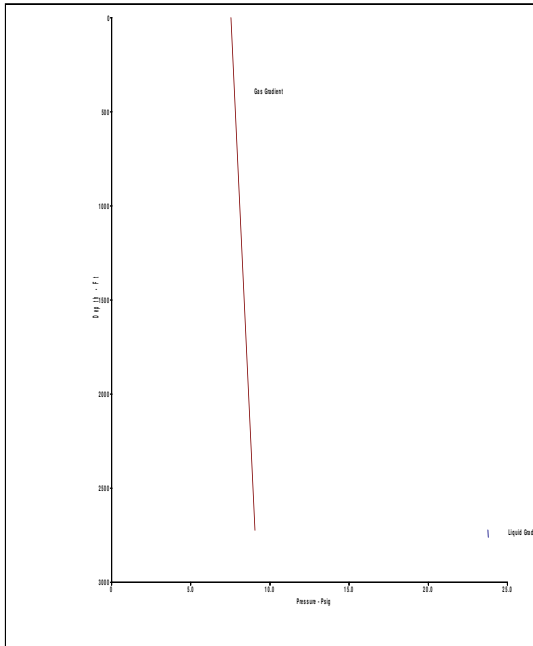
Calculation for Continous Removal of Liquids  
 Method:

Turner Critical Velocity for Gas Wells

For Tubing ID: 2.441 in  
 For Water: Mscf/D  
 For Condensate: Mscf/D

Back Pressure on Formation  
 Due To Liquid Loading: 14.7008 Mscf/D

| Tubing ID<br>in | Gas Rate<br>Mscf/D | Predicted Status |
|-----------------|--------------------|------------------|
| 2.441           |                    |                  |
| 1.995           |                    |                  |
| 1.500           |                    |                  |
| 1.250           |                    |                  |
| 1.000           |                    |                  |



Conservation Division  
District Office No. 1  
210 E. Frontview, Suite A  
Dodge City, KS 67801



Phone: 620-225-8888  
Fax: 620-225-8885  
<http://kcc.ks.gov/>

Shari Feist Albrecht, Chair  
Jay Scott Emler, Commissioner  
Pat Apple, Commissioner

Sam Brownback, Governor

September 01, 2015

Shawn Hildreth  
Linn Operating, Inc.  
600 TRAVIS STE 5100  
HOUSTON, TX 77002-3018

Re: Temporary Abandonment  
API 15-189-20086-00-00  
YOUNGREN 2-15  
SE/4 Sec.15-32S-39W  
Stevens County, Kansas

Dear Shawn Hildreth:

"Your temporary abandonment (TA) application for the well listed above has been approved. In accordance with K.A.R. 82-3-111 the TA status of this well will expire 09/01/2016.

- \* If you return this well to service or plug it, please notify the District Office.
- \* If you sell this well you are required to file a Transfer of Operator form, T-1.
- \* If the well will remain temporarily abandoned, you must submit a new TA application, CP-111, before 09/01/2016.

You may contact me at the number above if you have questions.

Very truly yours,

Michael Maier"