

**John Goldsmith Wellsite Service**

Cell and Home Phone: 316-640-0236

427 Roosevelt St. Cheney, KS 67025

Scale 1:240 (5"=100') Imperial  
Measured Depth Log

Well Name: #1 Biermann 8D
API: 15-203-20304
Location: 391' FSL & 853' FEL, 8-17S-37W, SW SE SE
License Number:
Spud Date: 04/24/2015
Surface Coordinates: LAT 38.5840155, LONG -101.4259263
Region: Wichita County
Bottom Hole Coordinates: Vertical hole, 1 1/4 Degree Deviation
Ground Elevation (ft): 3355', K.B. Elevation (ft): 3360'
Logged Interval (ft): 3700', To: RTD, Total Depth (ft): 5044'
Formation: Mississippian at RTD
Type of Drilling Fluid: Chemical

OPERATOR

Company: Ritchie Exploration, Inc.
Address: 8100 E 22nd St. N Ste. #700
Wichita, KS 67226
(316) 691-9500

GEOLOGIST

Name: John Goldsmith
Company: John Goldsmith Wellsite Service
Address: 427 Roosevelt St
Cheney, KS 67025
(316) 640-0236

COMMENTS

Contractor: WW Drilling Rig #2
Pusher: Lonnie
Surface Casing: 5 joints of 8 5/8" set at 240'
Production Casing: 5.5" Production Casing was installed.
Mud by: MudCo
DST's by: Trilobite Testing
Logs by: Cased Hole Solutions (DIL, CN-CD)
RTD=5044'
LTD=5041'

FORMATION TOPS

Table with 3 columns: FORMATION, SAMPLE TOPS (Depth, Datum), LOG TOPS (Depth, Datum). Lists formations like Heebner Shale, Toronto, Lansing, Muncie Creek Shale, Stark Shale, Hushpuckney Shale, B/KC, Marmaton, Altamont, Pawnee, Little Osage Shale, Excello Shale, Cherokee Shale, Johnson Zone, Mississippian, RTD, LTD.

DSTs

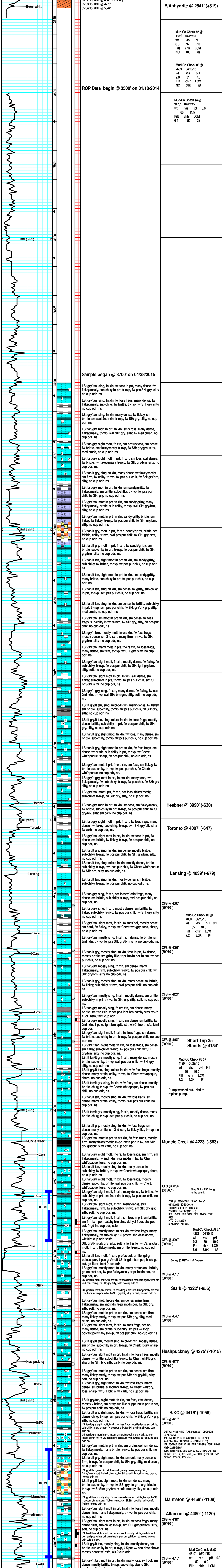
DST #1 4256'-4292' "LKC I Zone" 04/30/2015 30-30-30-30
1st Blw: Blt to 1/4" (No BB)
2nd Blw: No Blw (No BB)
IFP: 17-20# ISIP: 965# FFP: 34-23# FSIP: 896#
HYD: 2138-2094#
5' Mud w/ Tr of Oil.
DST #2 4434'-4510' "Altamont A" 05/01/2015 30-45-45-60
1st Blw: Blt to BOB in 8" (BOB BB in 24")
2nd Blw: Blw off BOB Inst. (BB bit to 8")
IFP: 43-204# ISIP: 1215# FFP: 251-37# FSIP: 1196#
HYD: 2261-2159#
1206' Total Fluid, 1210' GIP, 92' GCO (75% Oil), 186' GCMD (60% Oil, 30% Mud), 558' GCO (50% Oil), 370' GCMD (50% Oil, 40% Mud).
DST #3 4508'-4548' "Altamont B/C" 05/02/2015 30-30-30-30
1st Blw: Blt to 1/4" Died in 20min (No BB)
2nd Blw: No Blw (No BB)
IFP: 63-65# ISIP: 951# FFP: 65-65# FSIP: 824#
HYD: 2320-2201#
62' Mud.

ROCK TYPES

Legend for Rock Types: Anhy, Chl, Congl, Dol, Lmst, Shale, Siltst, Sst, Carb sh, Gry sh, Sandylms, Shlyslts, Shaly ls, Glau, Nodule, Phos, Pyr.

ACCESSORIES

Legend for Accessories: Fossil (Belm, Brach, Bryozoa, Crin, Foram), Mineral (Calc, Carb, Chtdk, Chlft, Dol), Glau, Nodule, Phos, Pyr.



Printed by WellSight Log Viewer from WellSight Systems 1-800-447-1534 www.WellSight.com

