

Saman Sharifaie

Petroleum Geologist

GEOLOGISTS'S REPORT

DRILLING TIME AND SAMPLE LOG

COMPANY: **Martin Drilling Co., Inc.**
LEASER: **Katreek #1-8**

FIELD: **Wildcat**
LOCATION: **6607 FNL & 1320 F.W.L.**
SEC: **8** TWP: **2S** RGE: **36W**
COUNTY: **Randolph** STATE: **Kansas**

CONTRACTOR: **Martin Drilling #8**
RTPD: **07/11/15** COMP: **0732/1/15**
MUD UP: **5060'** TYPE MUD: **Chemical**
MUD: **3.21'** LTPD: **5063'**

SAMPLES SAVED FROM: **4000'** TO RTD
DRILLING TIME KEPT FROM: **4000'** TO RTD
SAMPLES EXAMINED FROM: **4000'** TO RTD

GEOLOGICAL SUPERVISION FROM: **3700'**
GEOLOGICAL REFERENCE WELL: **MD/C-L-Katreek #1-SWD**

CONDUCTOR: **8-5/8" at 336'**
SURFACE: **8-5/8" at 336'**
PRODUCTION: **N/A**

CASING
ELECTRICAL SURVEYS
CND, DJL, MEL, SANC

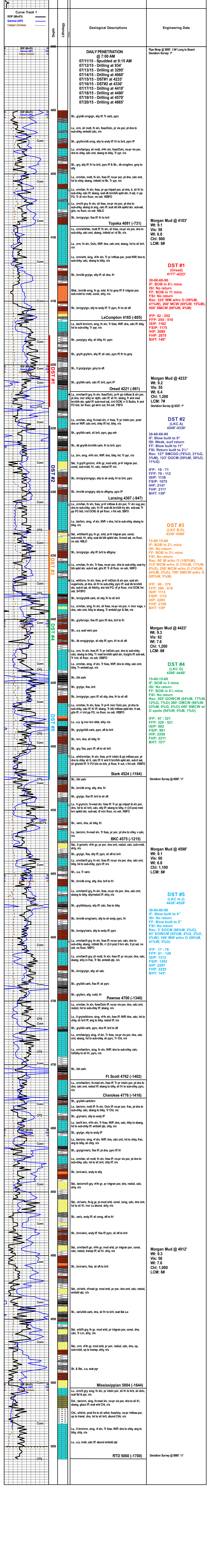
FORMATION REFERENCE WELL: **MD/C-L-Katreek #1-SWD**
Fluoresc. Highlight

Formation	Sample Tops	E-log Tops	Strat Pos.
Amblydrite	3362 (+89)	3328 (+88)	+6
Base Amblydrite	3395 (+51)	3388 (+45)	+6
Trilobite	4087 (-227)	4091 (-231)	-4
Oolite	4232 (-863)	4221 (-861)	-6
Landing	4308 (-948)	4307 (-947)	-7
Prwice	4570 (-1210)	4575 (-1215)	+2
BK/C	4704 (-1344)	4700 (-1340)	+2
Cherokee	4774 (-1414)	4776 (-1416)	+9
Mississippian	5002 (-1642)	5004 (-1644)	-8

REMARKS Due to poor to fair shows of oil in multiple potential pay zones and negative DST results, it is recommended and agreed upon by all parties that this well be plugged and abandoned.

Respectfully Submitted,
Saman Sharifaie
Petroleum Geologist

API #15-153-21123
*Tops have been adjusted to electric logs



Deviation Survey @ 5060': 1/2