

VESS OIL CORPORATION  
VARNER-PROHASKA LEASE  
SE.1/4, SECTION 8, T28S, R4E  
BUTLER COUNTY, KANSAS

Notes:

1. Set iron rod at location site.
2. All flagging Red & Yellow.
3. Overhead power available in Sec.8.
4. Kansas One Call System Inc. should be notified before excavation (1-800-344-7233).
5. CAUTION: Various pipelines in Sec.8.
6. Cattle in pasture at date of staking.
7. Contact landowner for best access.
8. Location fell under a E-W overhead electric line and 50' east of a N-S overhead electric line, set alternate 100' north per instructions.

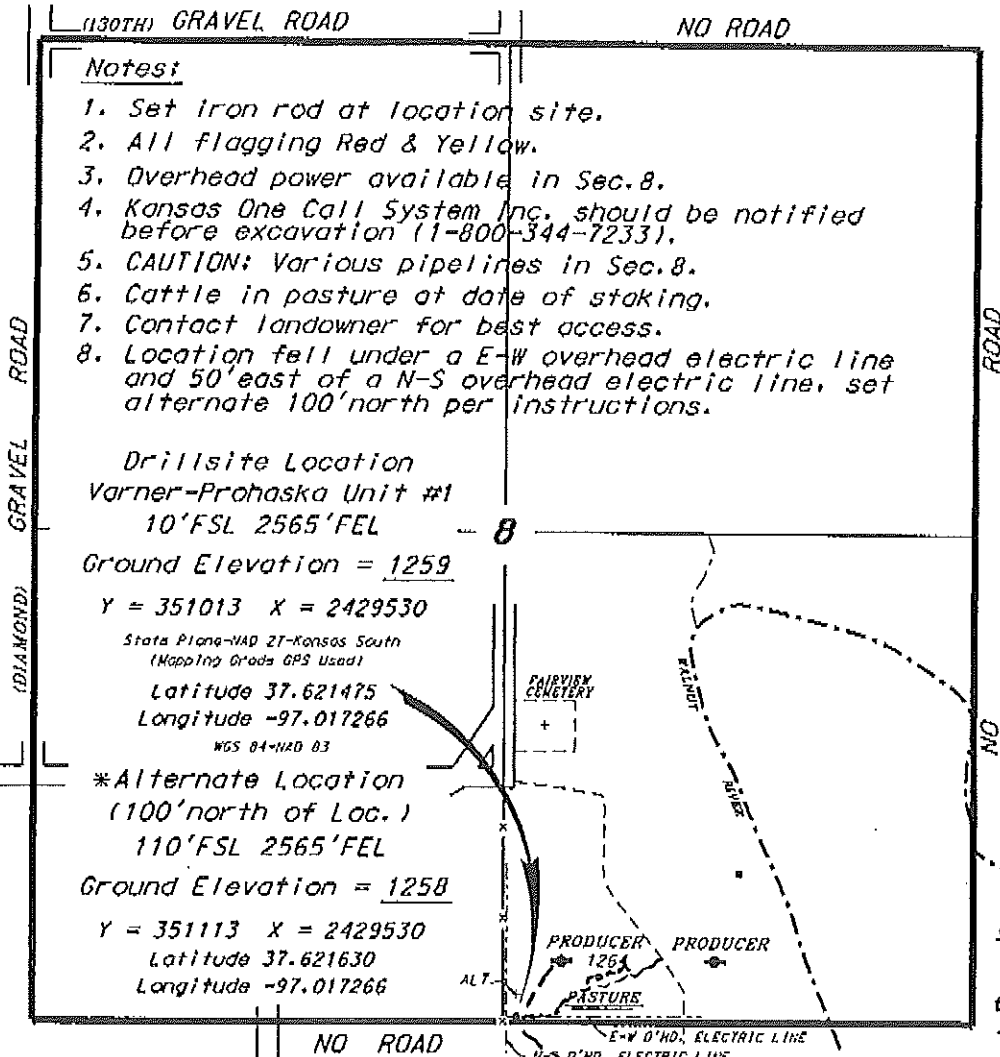
Drillsite Location  
Varner-Prohaska Unit #1  
10'FSL 2565'FEL  
Ground Elevation = 1259

Y = 351013 X = 2429530

State Plane-NAD 27-Kansas South  
(Mapping Grade GPS Used)  
Latitude 37.621475  
Longitude -97.017266  
NAD 83-NAD 83

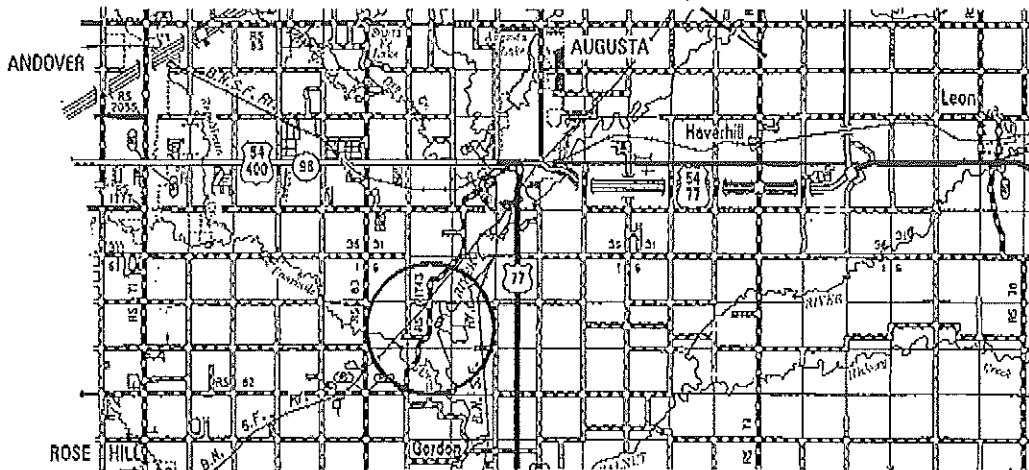
\*Alternate Location  
(100' north of Loc.)  
110'FSL 2565'FEL  
Ground Elevation = 1258

Y = 351113 X = 2429530  
Latitude 37.621630  
Longitude -97.017266



\*Access and egress to location as shown on this plot is for usage only and may not be legally opened for public use. Contact landowner, tenant and county road department for access.

Electric line to well to the east  
Existing road to Varner A 2b to well from NE  
Power line 1/2 mile SE to new battery north of Varner A present one



\* Controlling data is based upon the best maps and photographs available to us and upon a regular section of land containing 640 acres.

\* Approximate section lines were determined using the normal staking of corners of oilfield surveys conducted in the State of Kansas. The section corners, which establish the precise section lines, were not necessarily located, and the exact location of the section corners in the section is not guaranteed. Therefore, the operator accepting this service and accepting this plot and all other parties relying thereon agree to hold Central Kansas Oilfield Services, Inc., its officers and employees harmless from all losses, costs and expenses and said entities released from any liability from incidental or consequential damages.

\* Elevations derived from National Geospatial Vertical Datum.

Date July 30, 2015