

# LITHOLOGY STRIP LOG

## WellSight Systems

Scale 1:240 (5"=100') Imperial  
Measured Depth Log

Well Name: Castle Peak #2

Well Id:

Location: NW SW 17-24-14W

License Number:

Spud Date: 3-31-15

Surface Coordinates:

Region:

Drilling Completed: 4-6-15

Bottom Hole

Coordinates:

Ground Elevation (ft): 1993

K.B. Elevation (ft): 2005

Logged Interval (ft): 2000 To: 4210

Total Depth (ft): 4210

Formation: Mississippian

Type of Drilling Fluid:

Printed by WellSight Log Viewer from WellSight Systems 1-800-447-1534 www.WellSight.com

### OPERATOR

Company: Kansas Petroleum Resources, LLC

Address: 200 E. 1st Street Suite 307  
Wichita, Ks 67202

### GEOLOGIST

Name: Rod Andersen

Company:

Address:

### Cores

### DSTs

### Comments

### ROCK TYPES



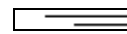
Anhy



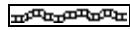
Coal



Lmst



Shcol



Bent



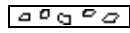
Congl



Meta



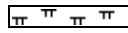
Shgy



Brec



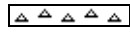
Dol



Mrlst



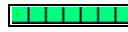
Slstst



Cht



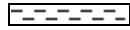
Gyp



Salt



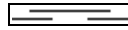
Ss



Clyst



Igne



Shale



Till

### ACCESSORIES

#### MINERAL

- Anhy
- Arggrn
- Arg
- Bent
- Bit
- Breclfrag
- Calc
- Carb
- Chtdk
- Chtlt
- Dol
- Feldspar
- Ferrpel
- Ferr
- Glau
- Gyp
- Hvymin
- Kaol
- Marl

- Minxl
- Nodule
- Phos
- Pyr
- Salt
- Sandy
- Silt
- Sil
- Sulphur
- Tuff

#### FOSSIL

- Algae
- Amph
- Belm
- Bioclst
- Brach
- Bryozoa
- Cephal
- Coral

- Crin
- Echin
- Fish
- Foram
- Fossil
- Gastro
- Oolite
- Ostra
- Pelec
- Pellet
- Pisolite
- Plant
- Strom

#### STRINGER

- Anhy
- Arg
- Bent
- Coal
- Dol

- Gyp
- Ls
- Mrst
- Sltstrg
- Ssstrg

#### TEXTURE

- Boundst
- Chalky
- Cryxln
- Earthy
- Finexln
- Grainst
- Lithogr
- Microxln
- Mudst
- Packst
- Wackst

### OTHER SYMBOLS

#### POROSITY

- Earthy
- Fenest
- Fracture
- Inter
- Moldic
- Organic
- Pinpoint
- Vuggy

#### SORTING

- Well
- Moderate
- Poor

#### ROUNDING

- Rounded
- Subrnd
- Subang

- Angular

#### OIL SHOW

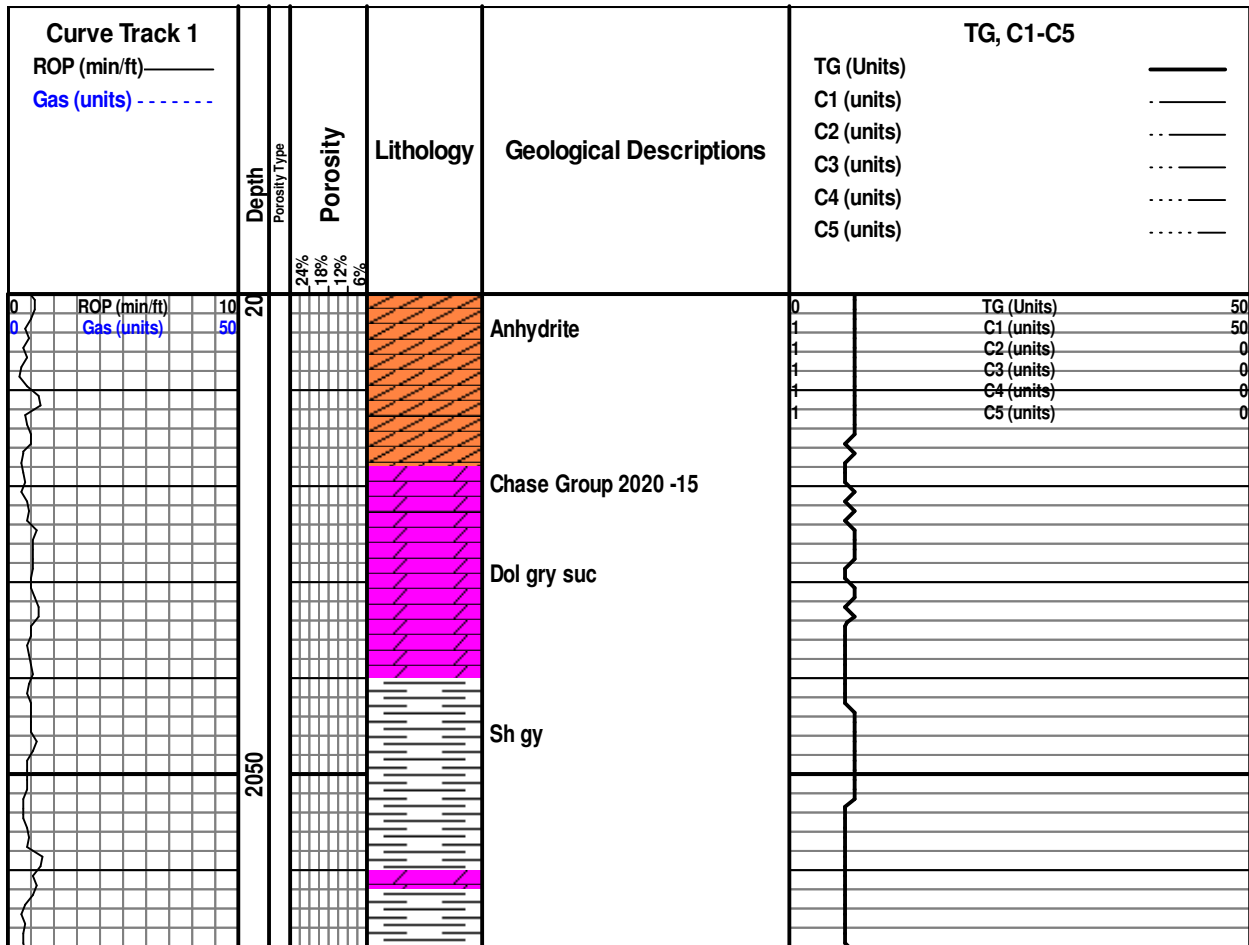
- Even
- Spotted
- Ques
- Dead

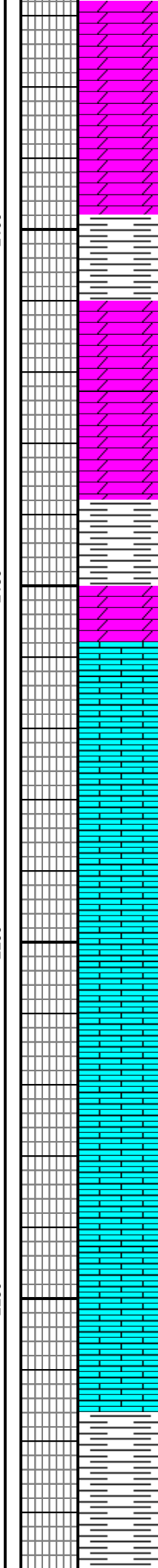
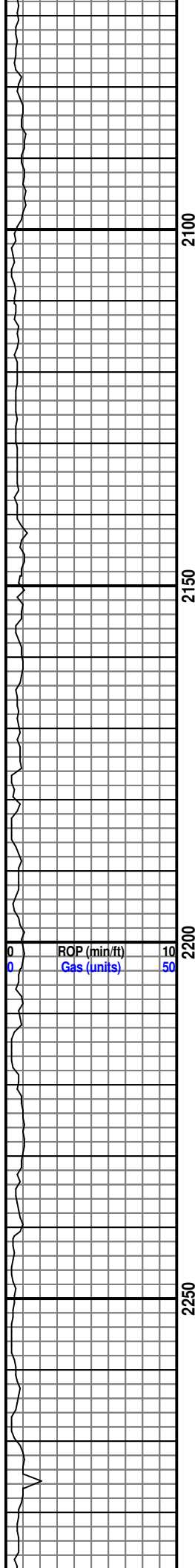
#### INTERVAL

- Core
- Dst

#### EVENT

- Rft
- Sidewall





Dol gy suc

Sh gy

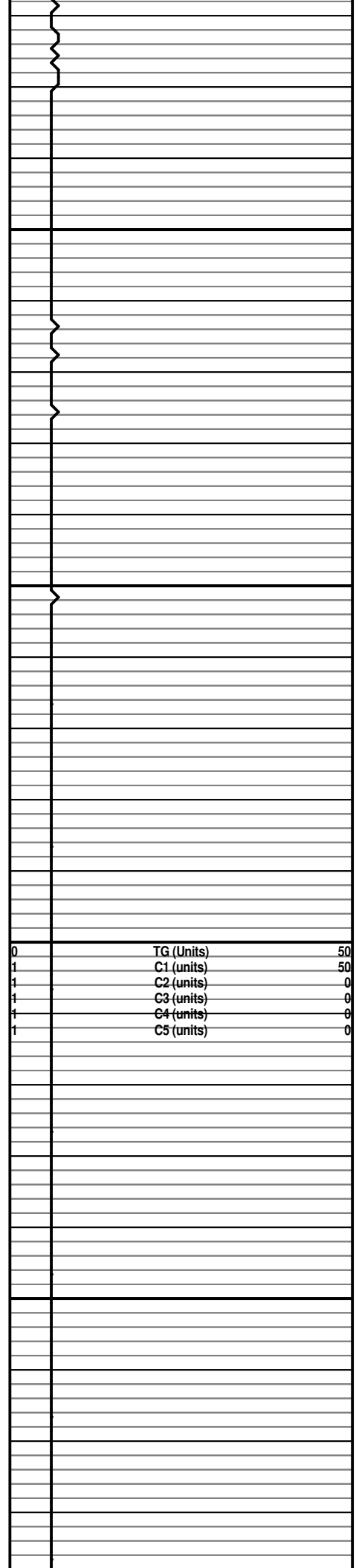
Dol. Brn suc

Sh gy

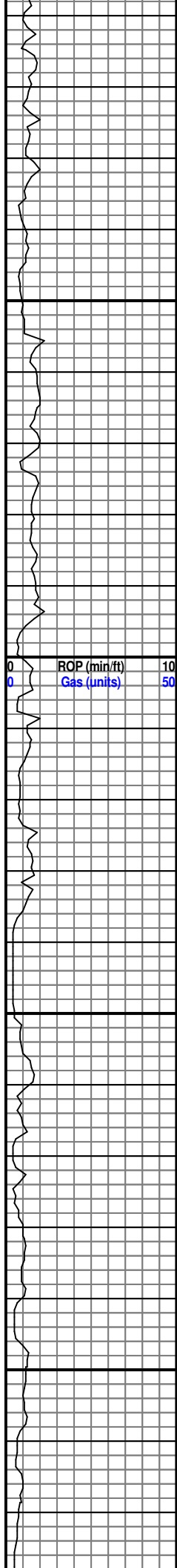
Dol brn suc

Ls crm fxln

Sh gy







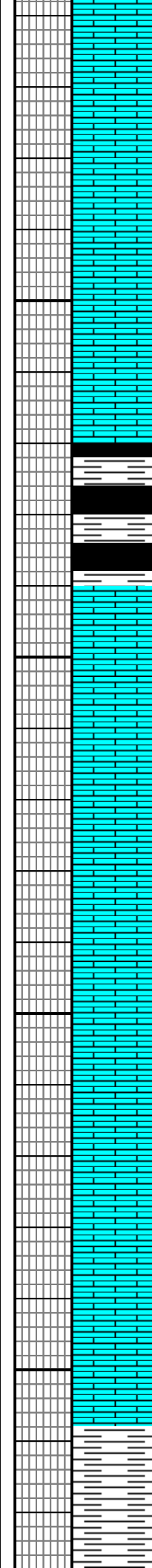
2550

2600

2650

2700

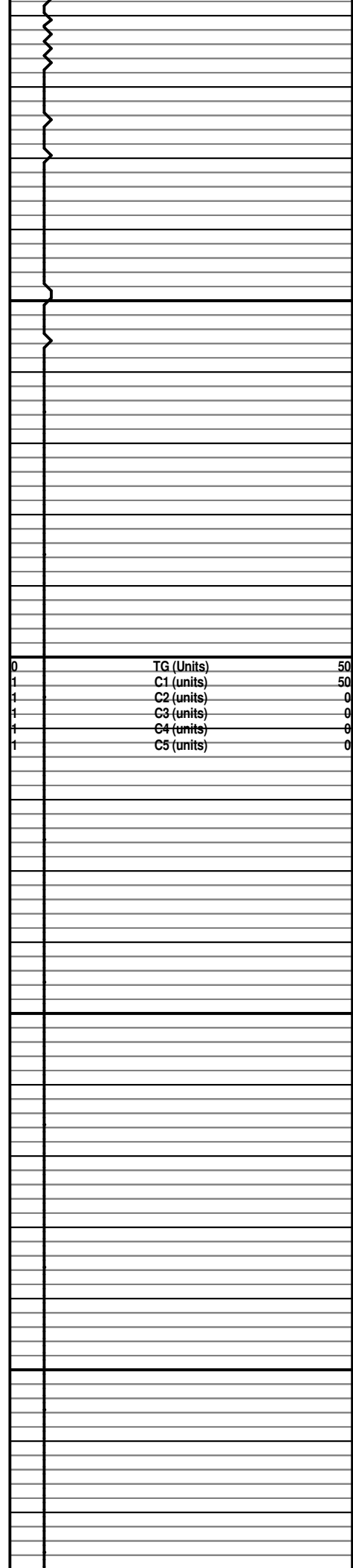
0 ROP (min/ft) 10  
 0 Gas (units) 50



Sh gy - blk carb.

Ls crm-tan fxln

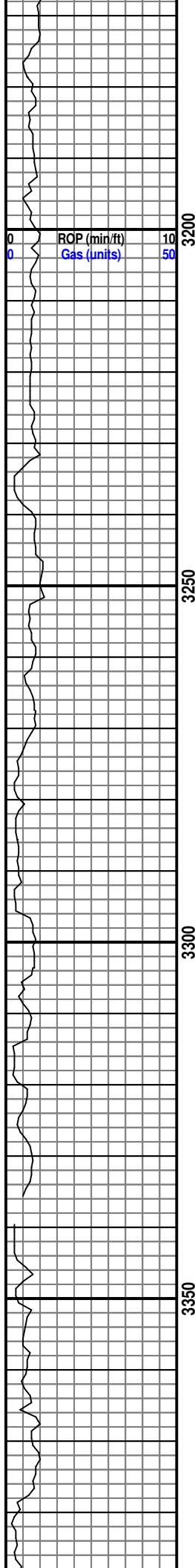
Sh gy



|   |            |    |
|---|------------|----|
| 0 | TG (Units) | 50 |
| 1 | C1 (units) | 50 |
| 1 | C2 (units) | 0  |
| 1 | C3 (units) | 0  |
| 1 | C4 (units) | 0  |
| 1 | C5 (units) | 0  |







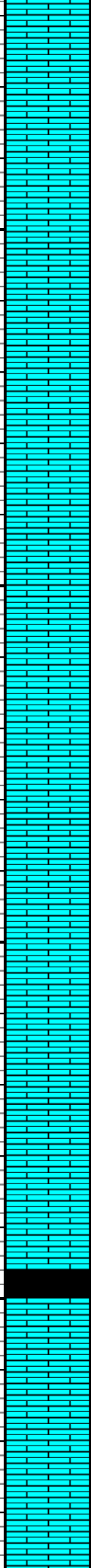
ROP (min/ft) 10  
Gas (units) 50

3200

3250

3300

3350

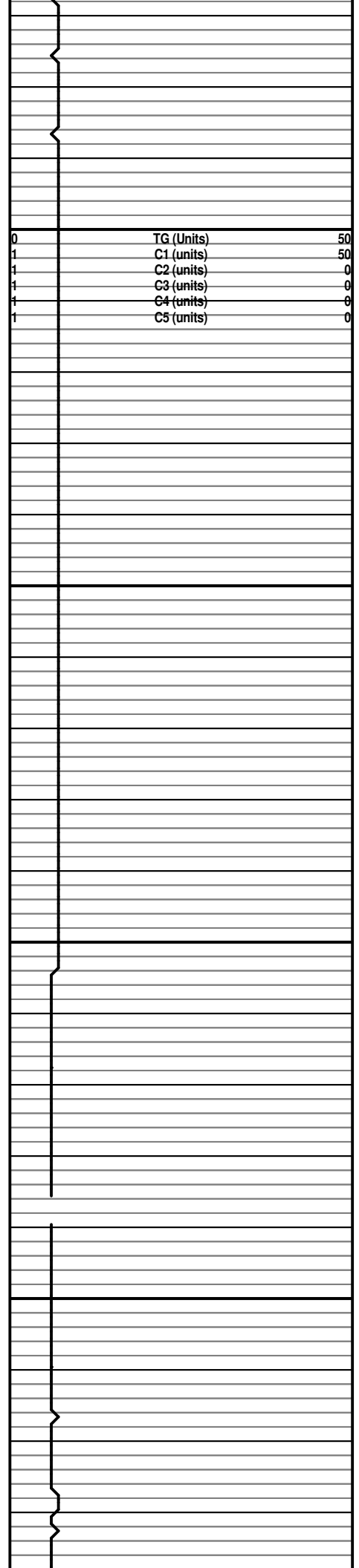


Ls crm cxln oolitic lp

Sh blk carb

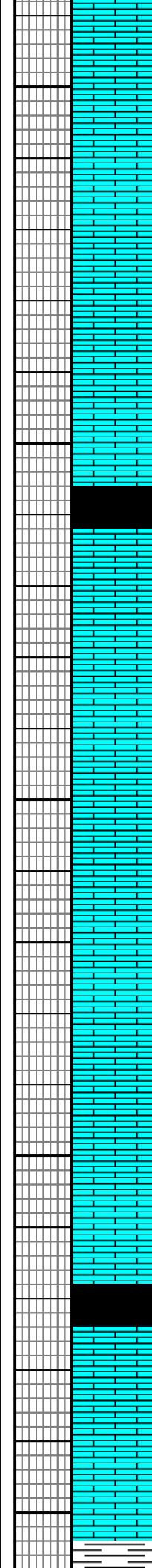
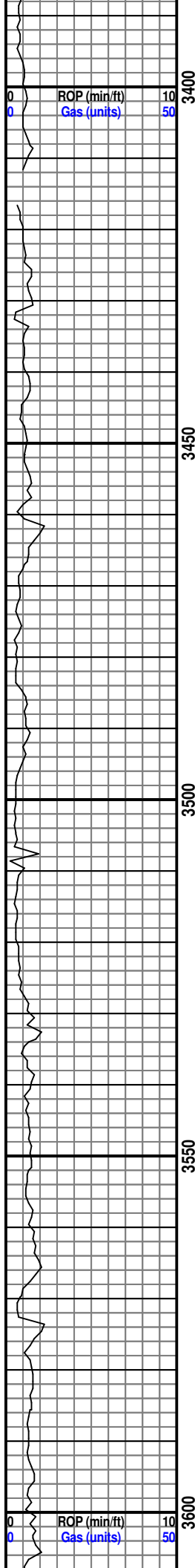
Ls crm - tan cxln foss

Topeka 3370 -1365



TG (Units) 50  
C1 (units) 50  
C2 (units) 0  
C3 (units) 0  
C4 (units) 0  
C5 (units) 0

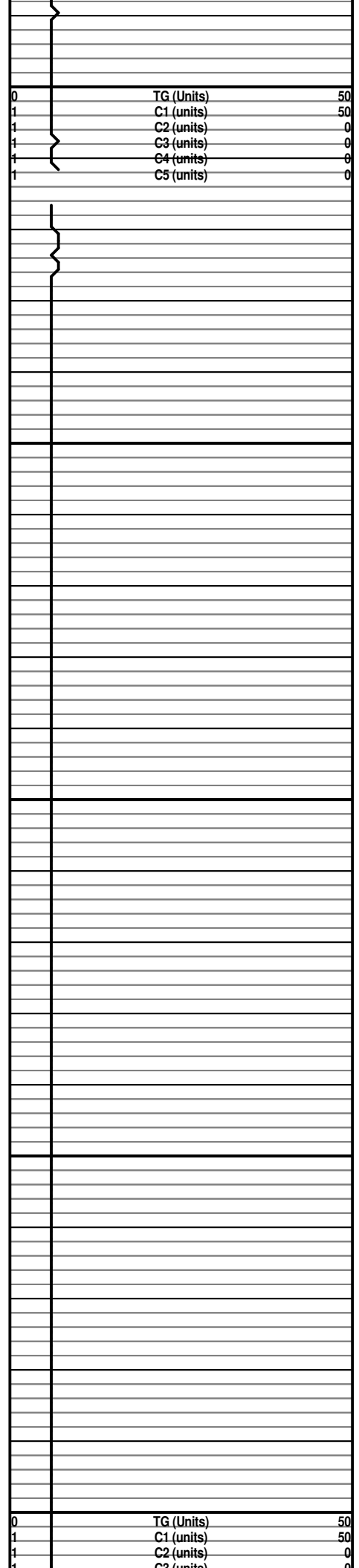




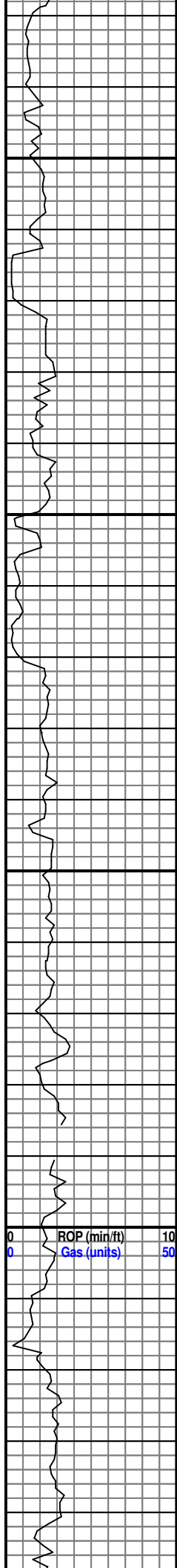
Sh blk carb

Heebner Sh blk carb  
3672-1667

Ls crm-brn cxln







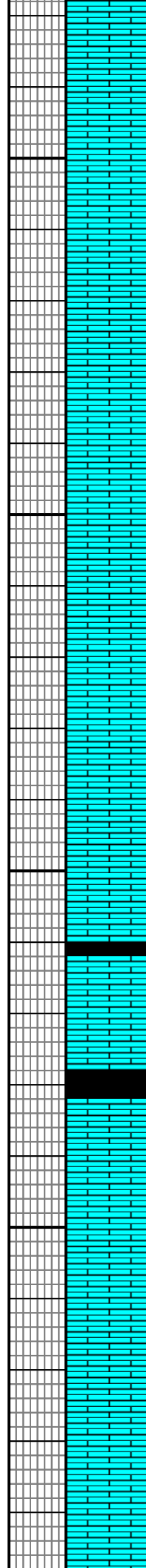
3850

3900

3950

4000

ROP (min/ft) 10  
Gas (units) 50



Ls crm-tan cxln-oolitic good vis por good stain good odor good flour. scattered free oil

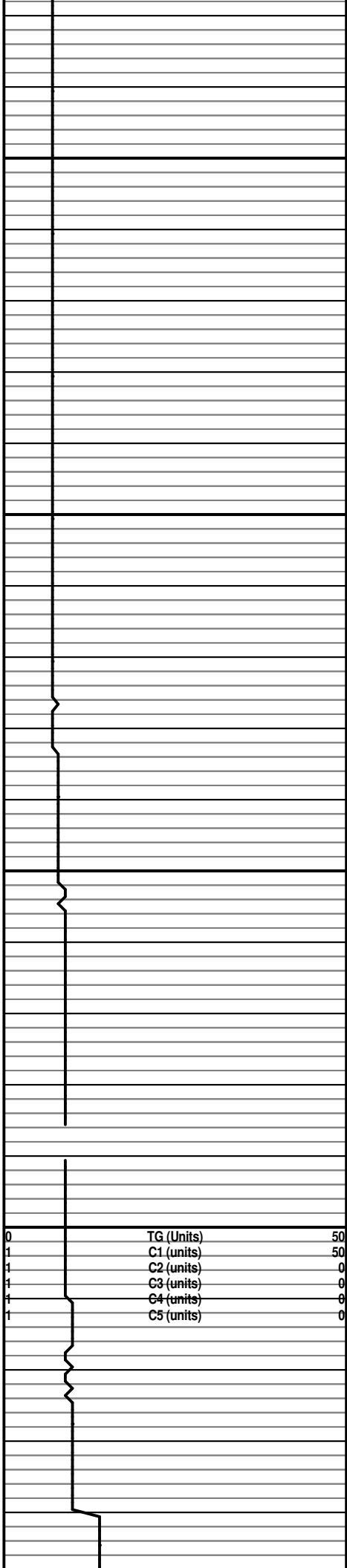
Ls crm-tan clxn oolitic in part good vis por good stain good odor good flour. scattered free oil free oil in dolomitic samples suc. por.

Base of Kansas City  
3966-1961

Ls crm cxln good vis por good bleeding oil good flour odor good flour.

Ls crm fair-good por good stain some bleeding oil odor good flour.

Ls crm-brn cxln good stain good odor good flour.



TG (Units) 50  
C1 (units) 50  
C2 (units) 0  
C3 (units) 0  
C4 (units) 0  
C5 (units) 0



