

CEMENT BOND LOG

Company **MIKE KELSO OIL, INC.**

Well **WESSELER #10**

Field
County **ELLSWORTH** State **KANSAS**

Location
County **ELLSWORTH** State **KANSAS**

SEC. **19** TWP. **17S** RGE. **9W**
SE NW SE SE

Permanent Datum **GROUND LEVEL** Elevation **1711**

Log Measured From **KELLY BUSHING, 5' AGL**
Drilling Measured From **KELLY BUSHING**
Elevation
K.B. 1716
D.F.
G.L. 1711

Date **7-27-2015**

Run Number	ONE						
Depth Driller	3300						
Depth Logger	3120						
Bottom Logged Interval	3116						
Top Log Interval	1200						
Open Hole Size	WATER						
Type Fluid	WATER						
Density / Viscosity							
Max. Recorded Temp.							
Estimated Cement Top	1910						
Time Well Ready							
Time Logger on Bottom							
Equipment Number	51						
Location	GREAT BEND						
Recorded By	S. GIEBLER						
Witnessed By	MR. KELSO						
Borehole Record		Tubing Record					
Run Number	Bit	From	To	Size	Weight	From	To
Casing Record	Size	Wgt/Ft		Top	Bottom		
Surface String	8.625			0	260		
Prot. String							
Production String	5.5			0	3297		
Liner							

<<< Fold Here >>>

All interpretations are opinions based on inferences from electrical or other measurements and we cannot and do not guarantee the accuracy or correctness of any interpretation, and we shall not, except in the case of gross or willful negligence on our part, be liable or responsible for any loss, costs, damages, or expenses incurred or sustained by anyone resulting from any interpretation made by any of our officers, agents or employees. These interpretations are also subject to our general terms and conditions set out in our current Price Schedule.

Comments

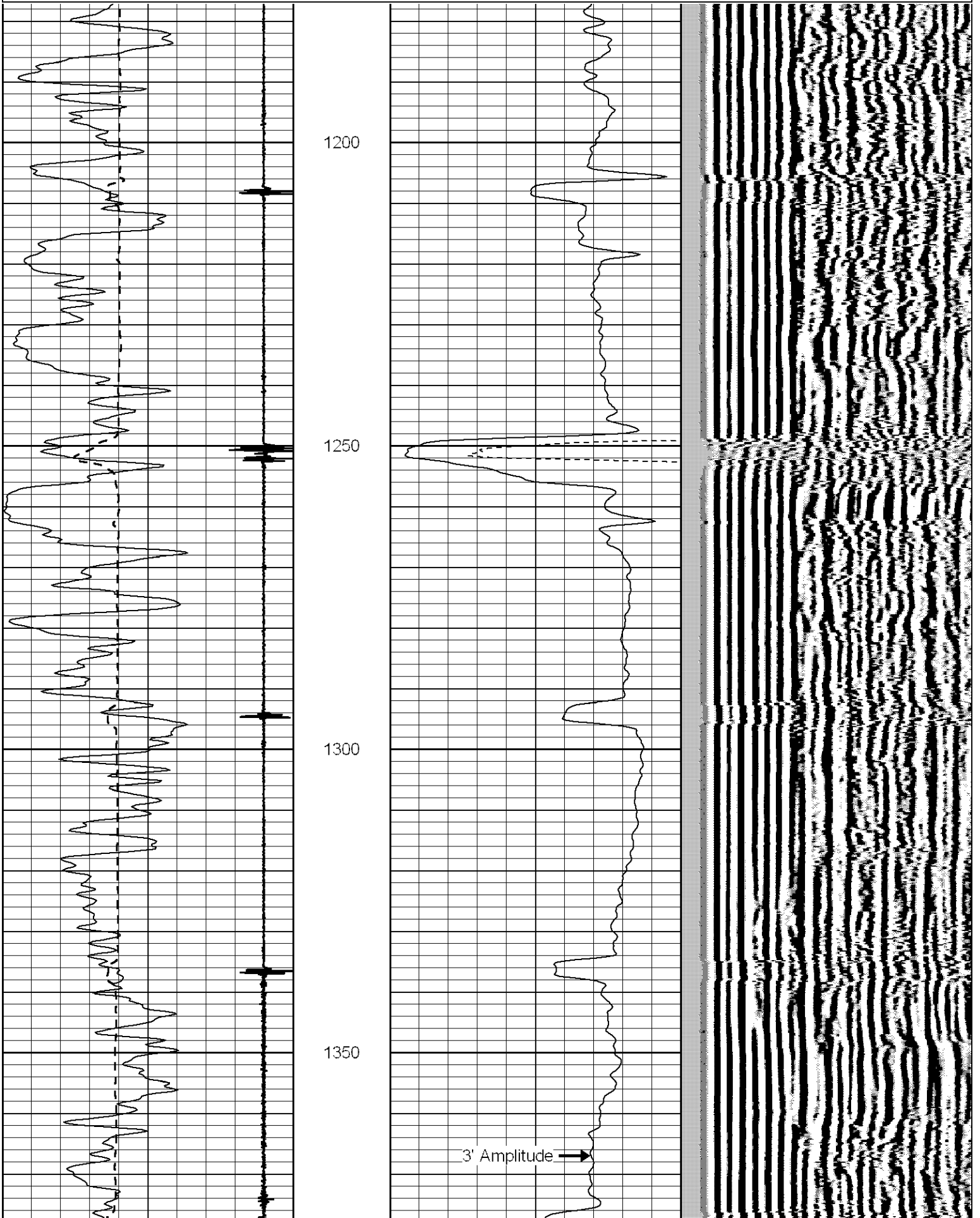
THANK YOU FOR USING LOG TECH OF KANSAS!
HWY 4 AND CHASE BT 2.5 NORTH, 1/4 WEST. NORTH INTO

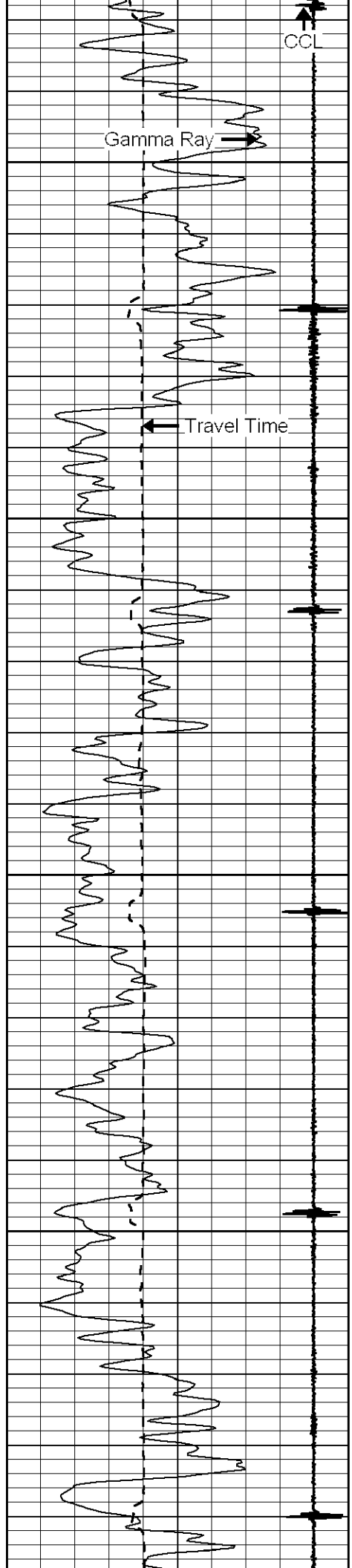
Database File: wess10.db
Dataset Pathname: pass3
Presentation Format: cbl01
Dataset Creation: Mon Jul 27 11:20:34 2015 by Log 6.1
Charted by: Depth in Feet scaled 1:240

320	Travel Time (usec)	120
9	Collar Locator	-1
0	Gamma Ray (GAPI)	150

0	AMPLITUDE (mV)	100
0	amp3 (mV)	20

Variable Density 1150





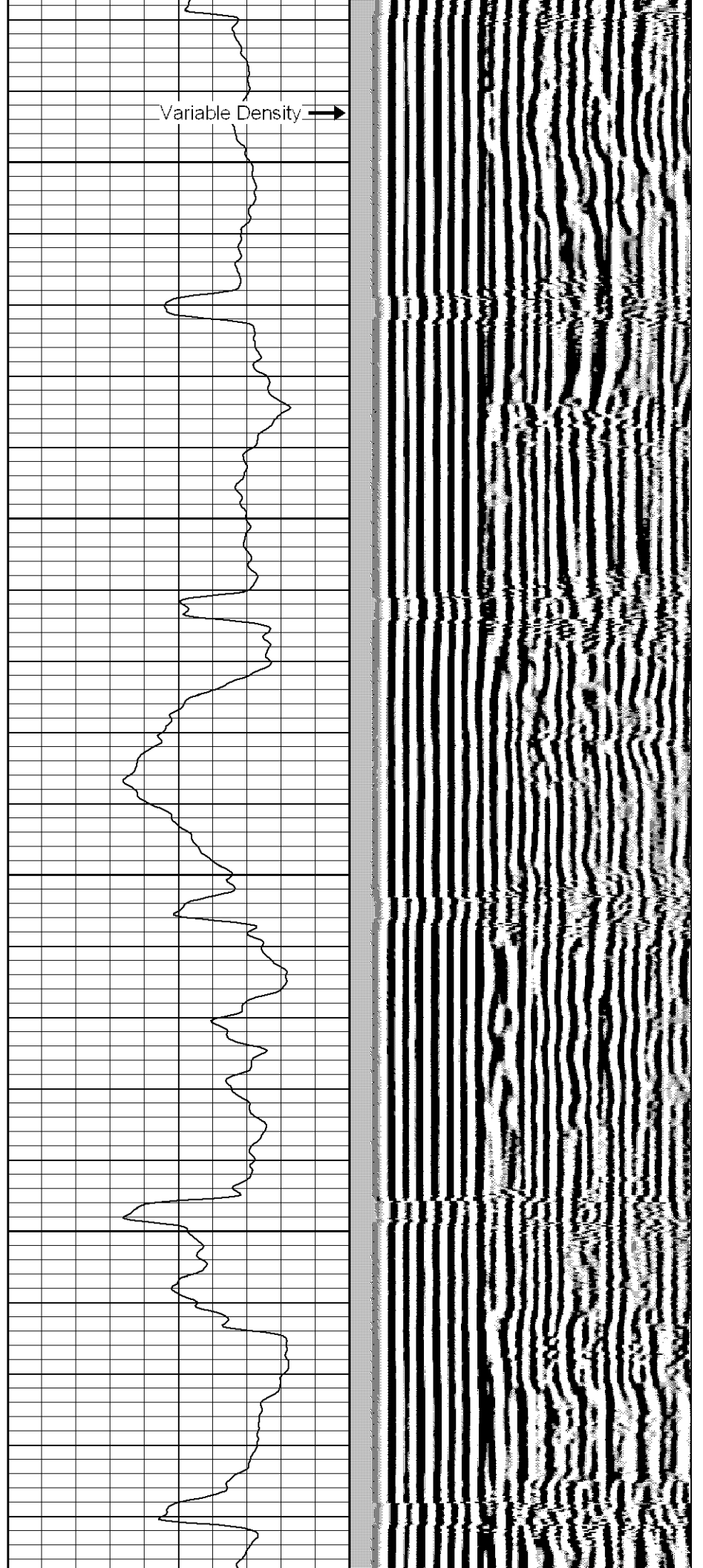
1400

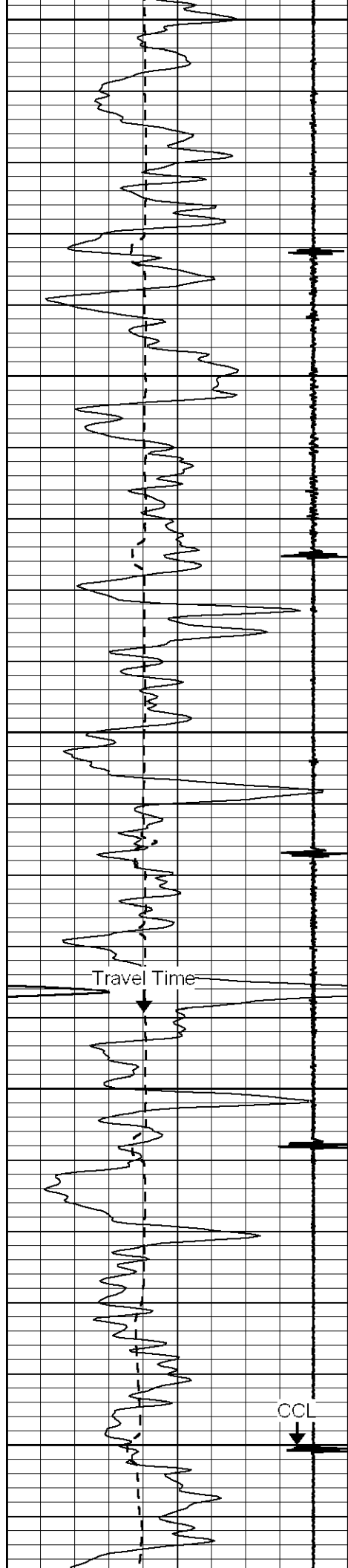
1450

1500

1550

Variable Density →





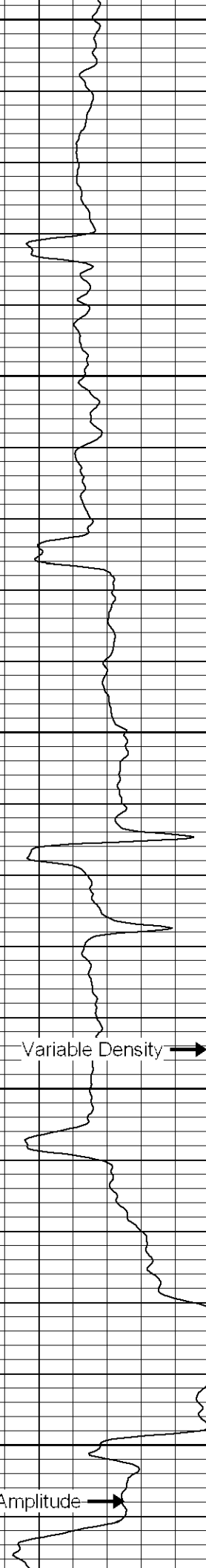
1600

1650

1700

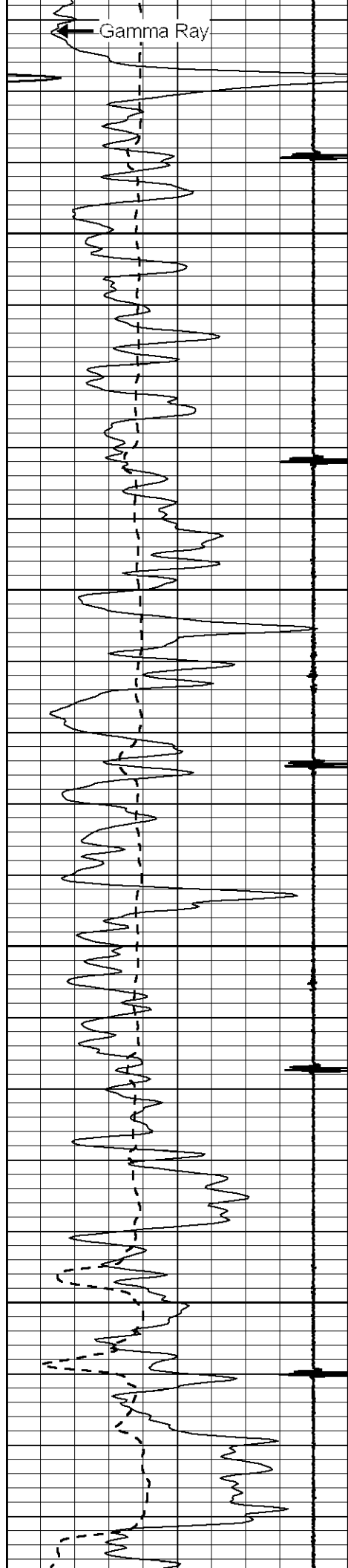
1750

1800



Variable Density →

3' Amplitude →

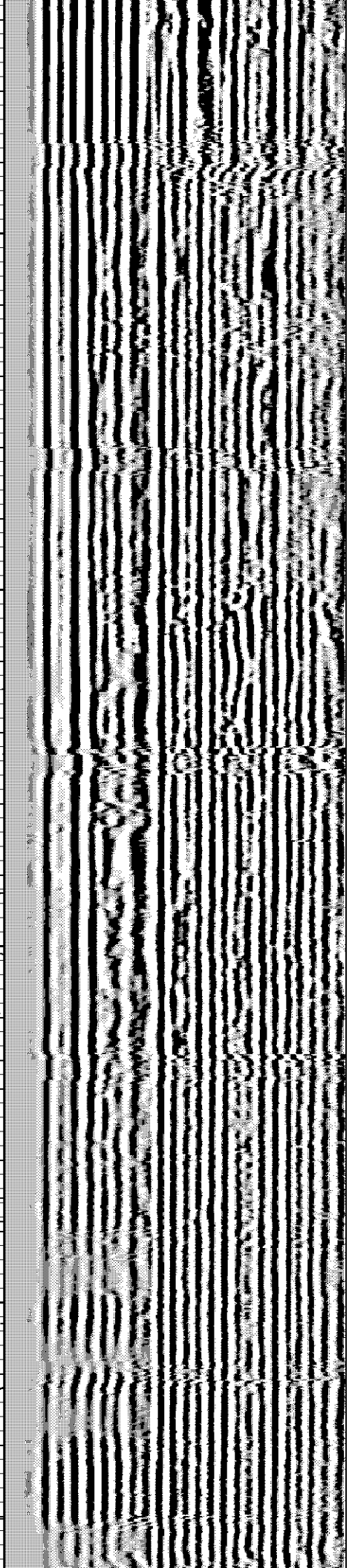
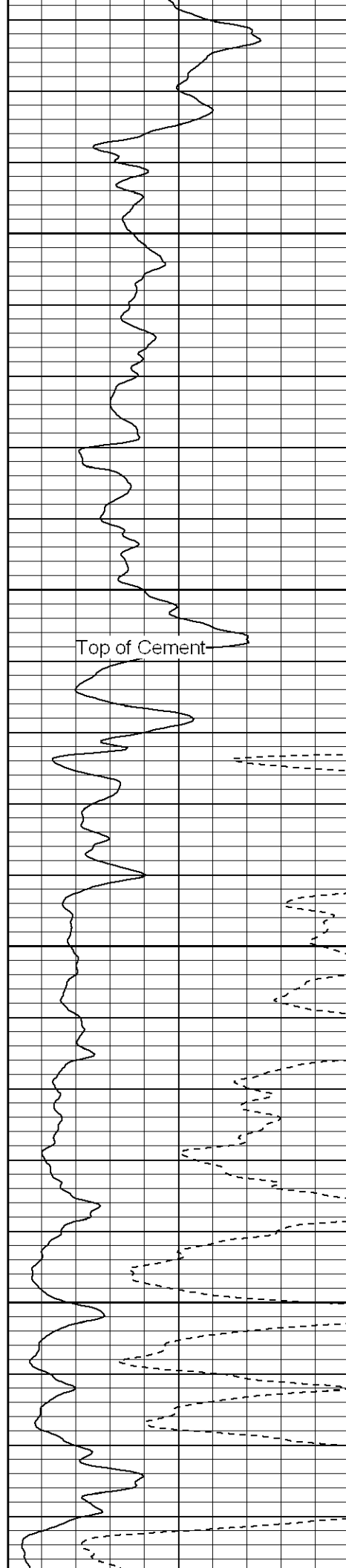


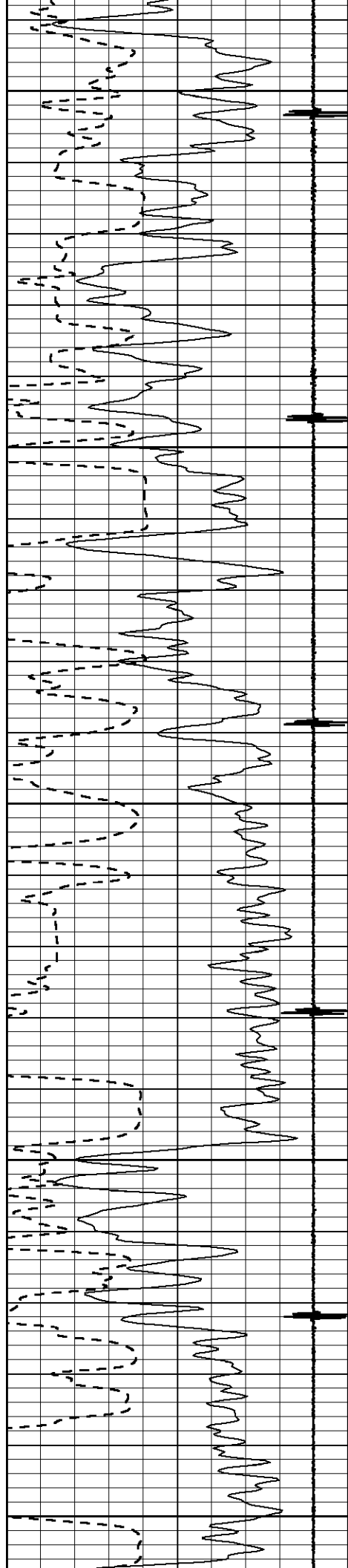
1850

1900

1950

2000





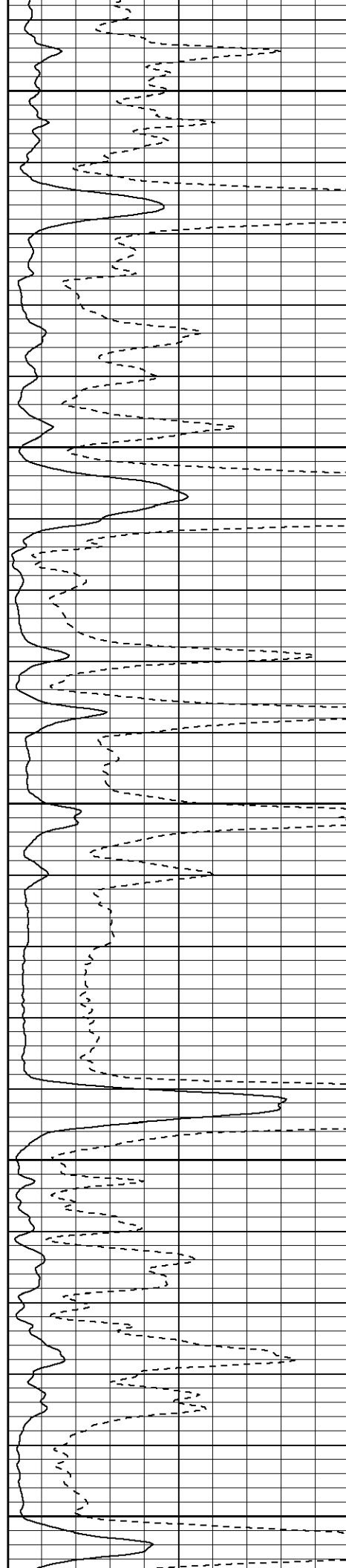
2050

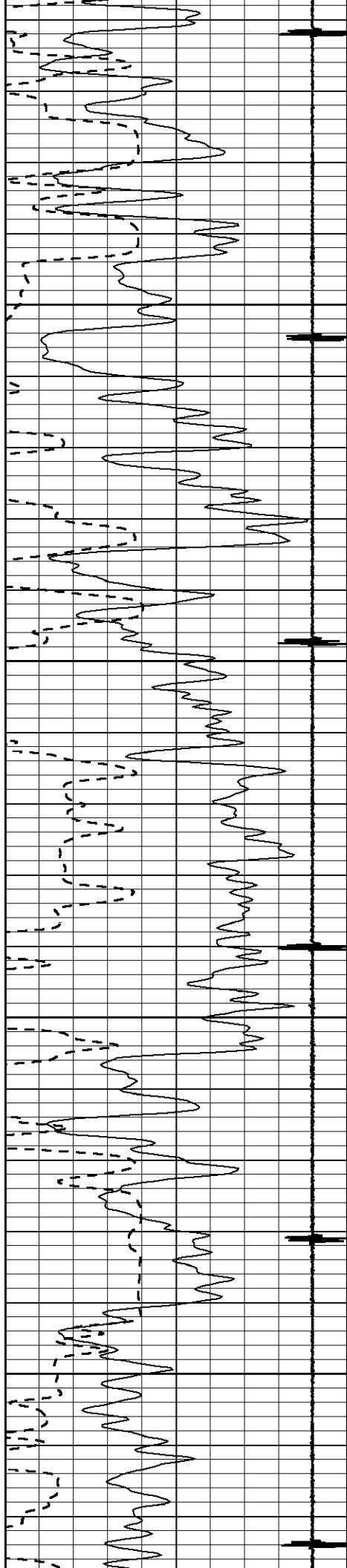
2100

2150

2200

2250



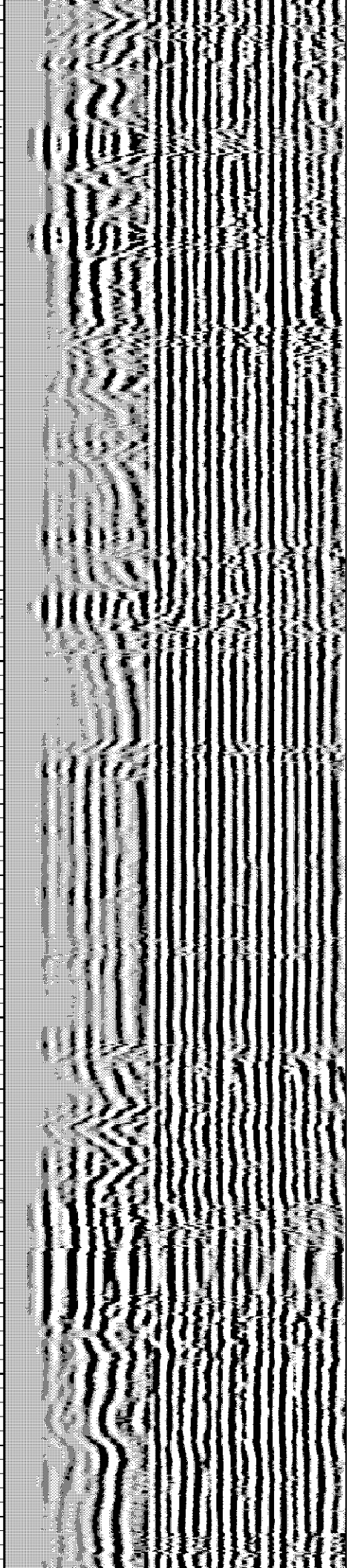
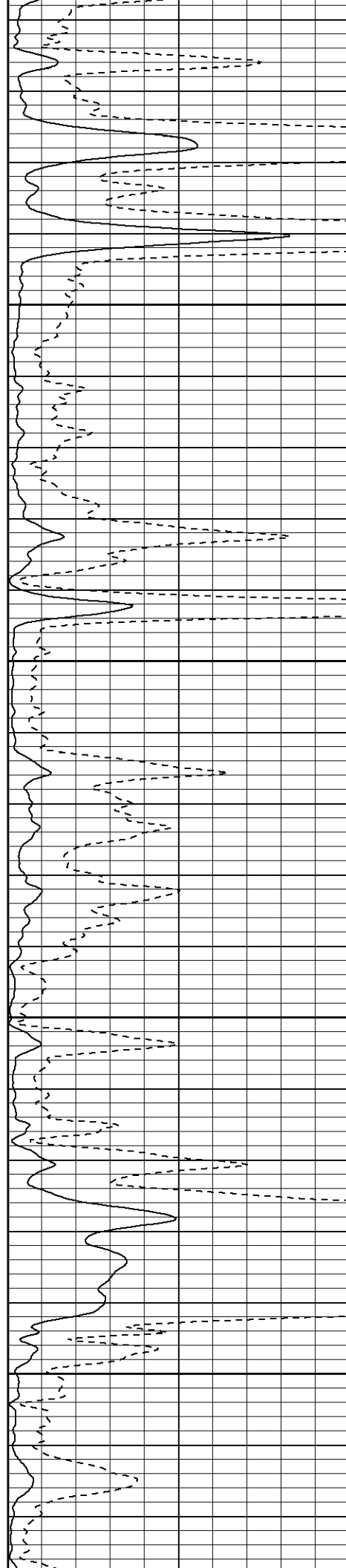


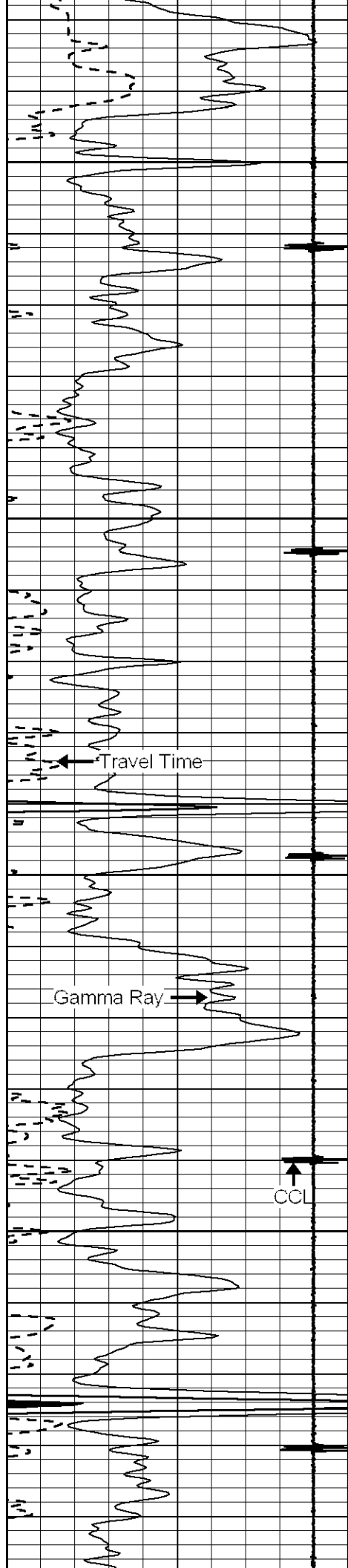
2300

2350

2400

2450



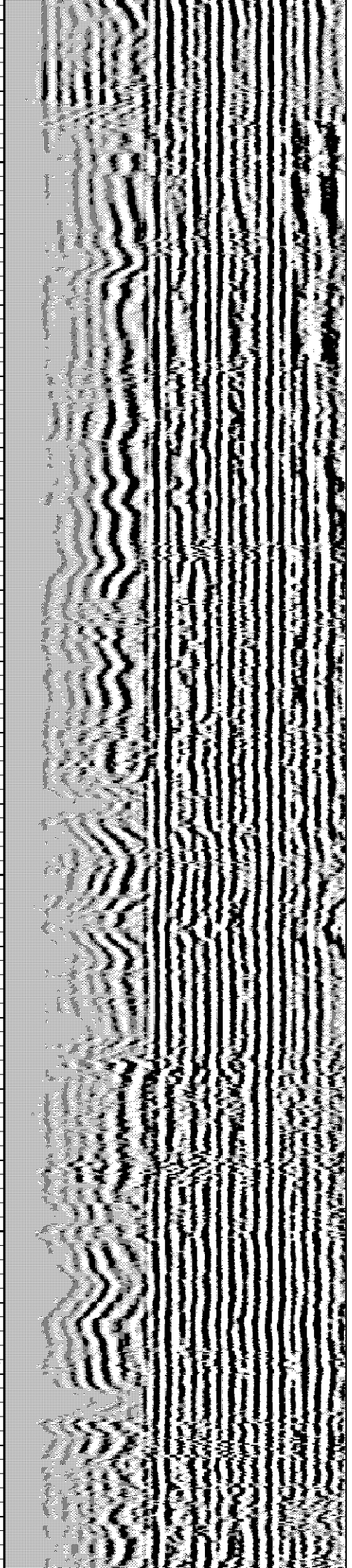
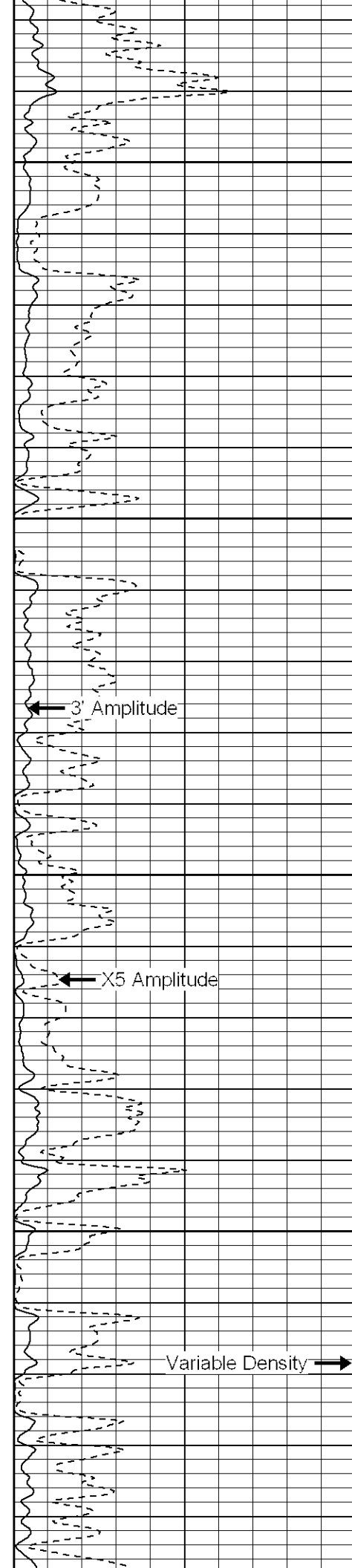


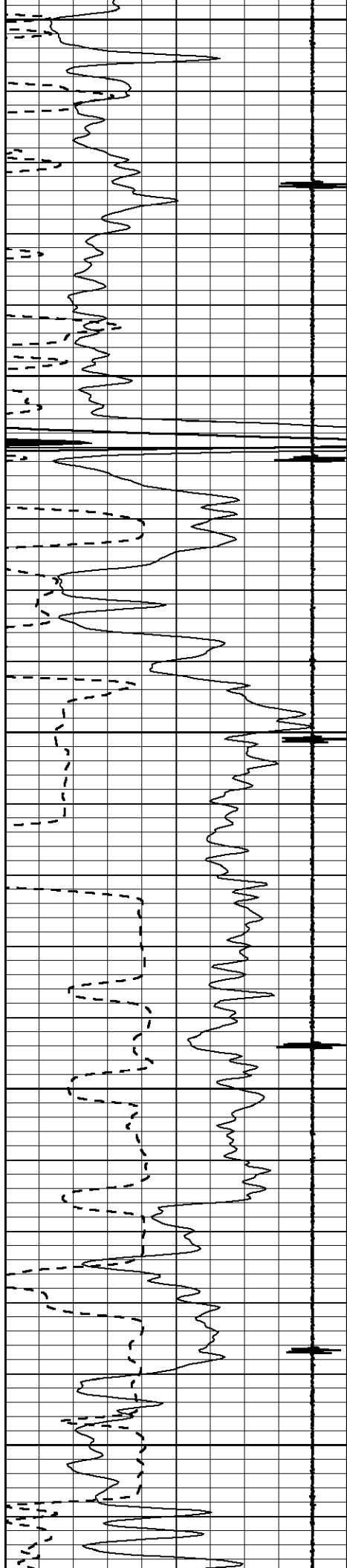
2500

2550

2600

2650





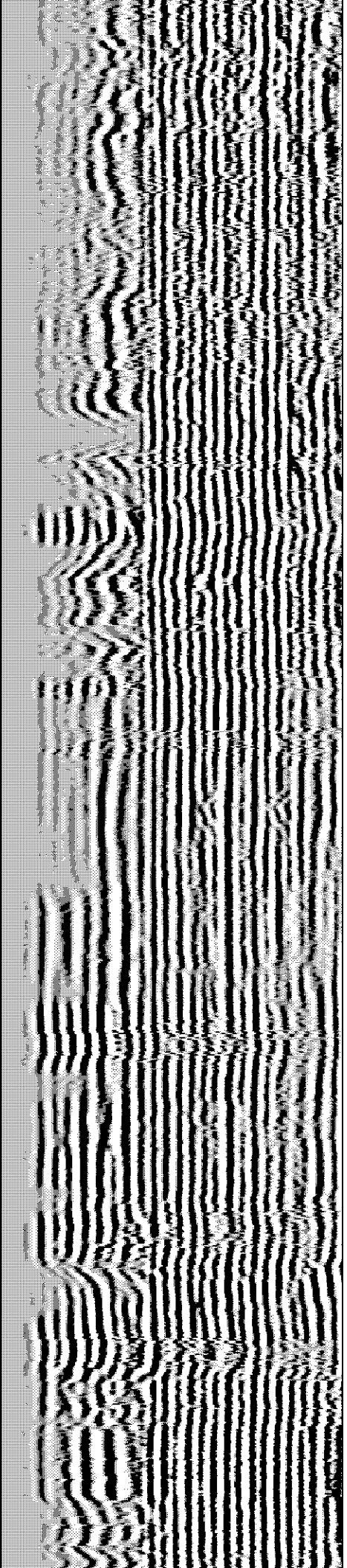
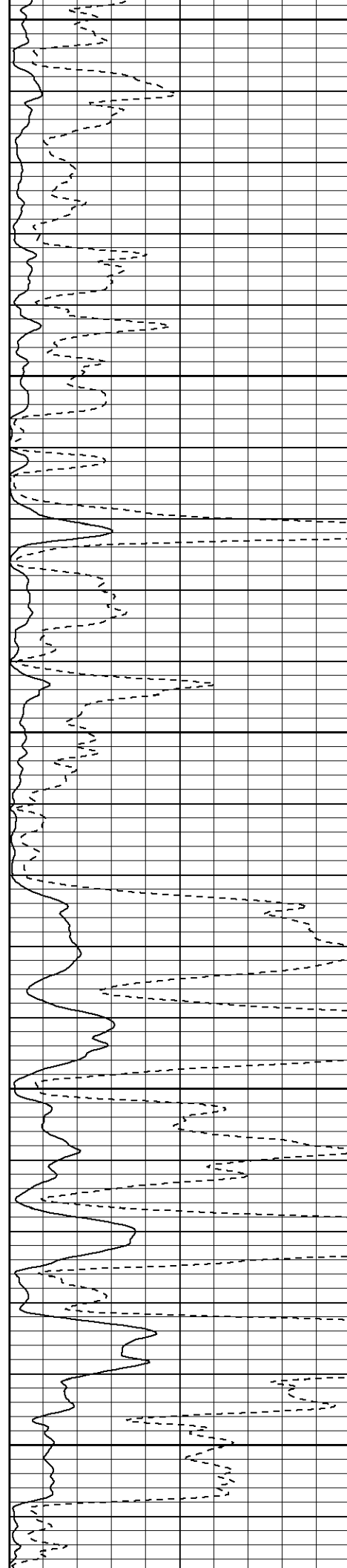
2700

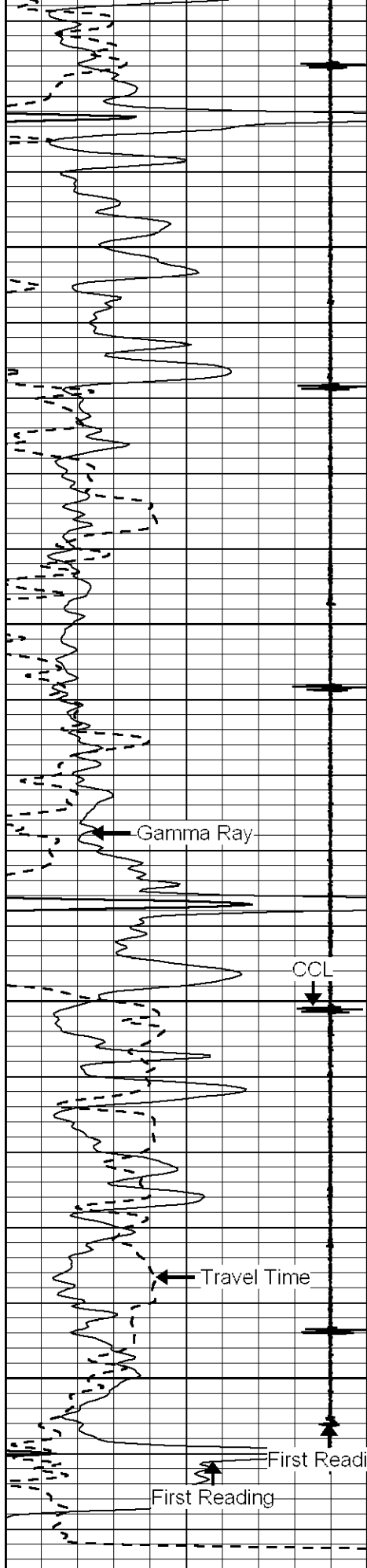
2750

2800

2850

2900





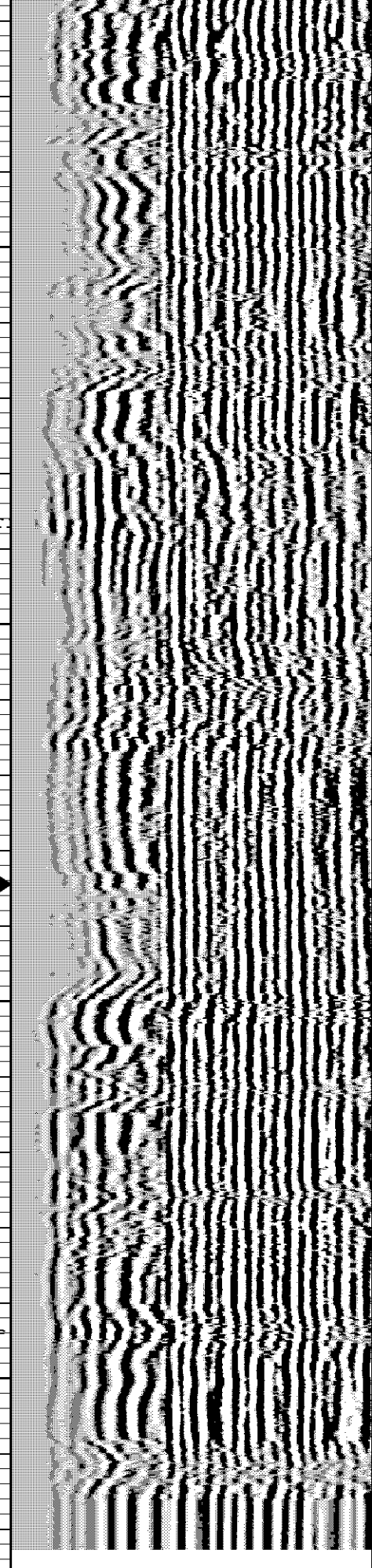
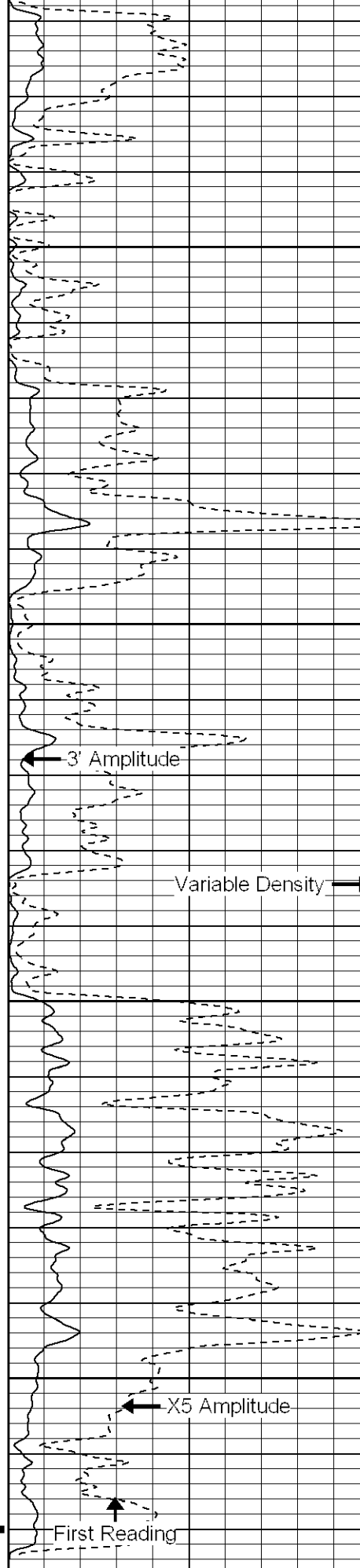
2950

3000

3050

3100

LTD 3120



320 Travel Time (usec) 120

9 Collar Locator -1

0 AMPLITUDE (mV) 100

0 amp3 (mV) 20

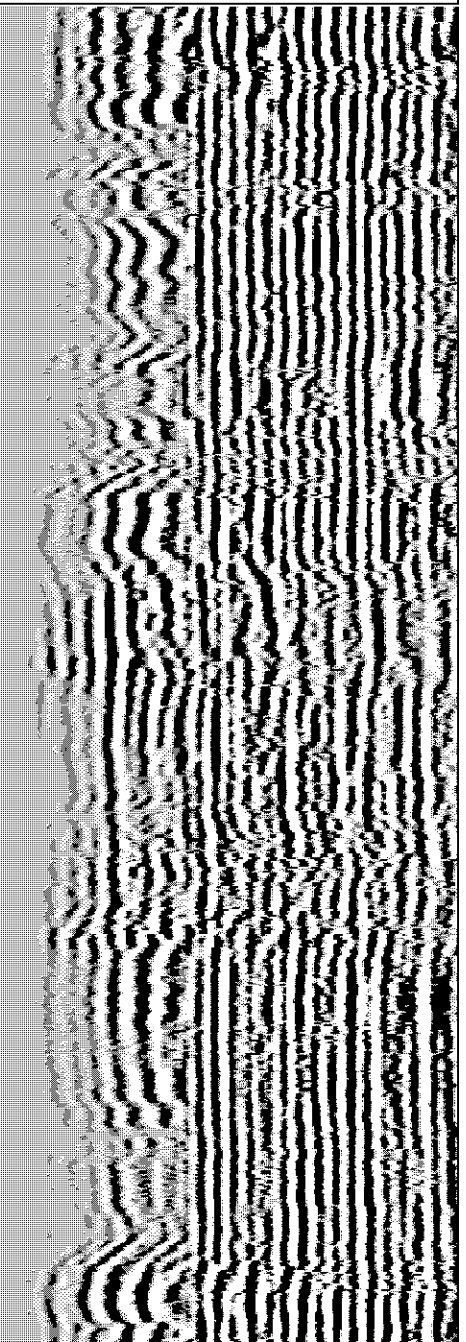
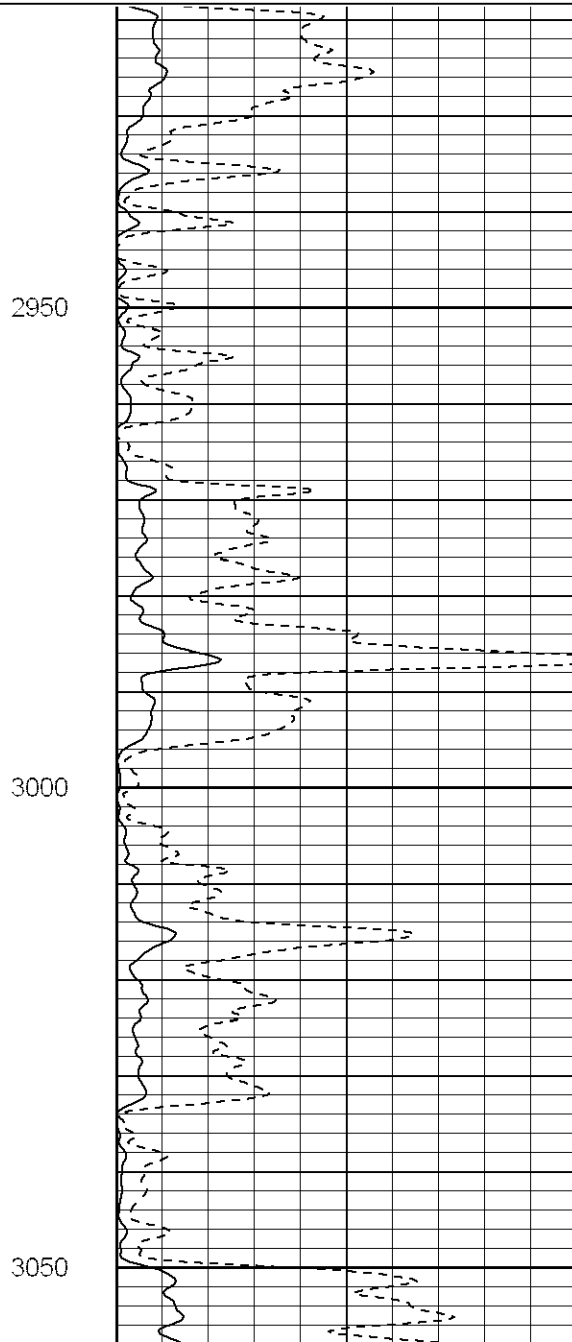
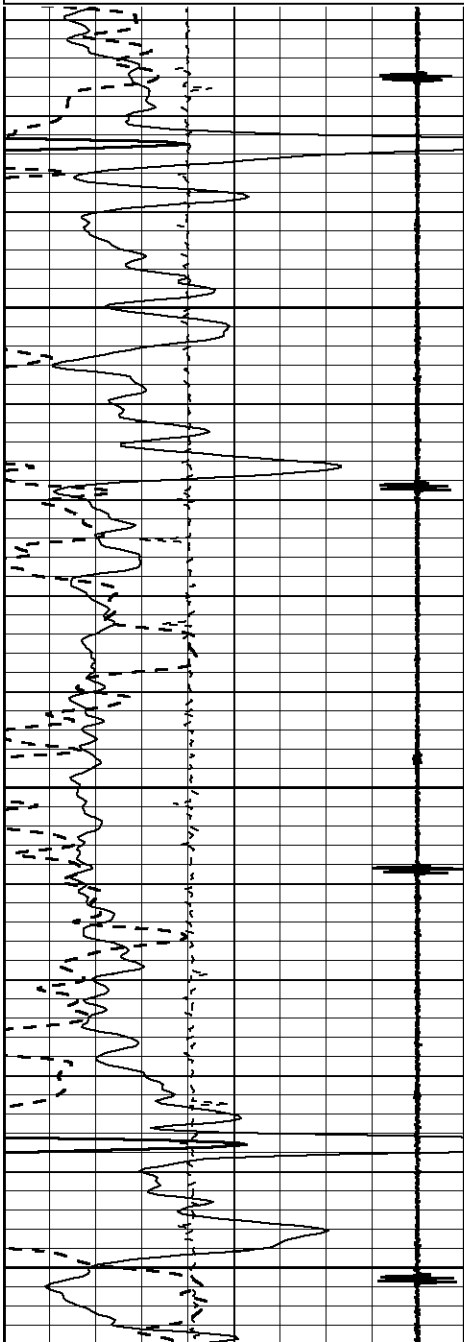
150 Variable Density 1150

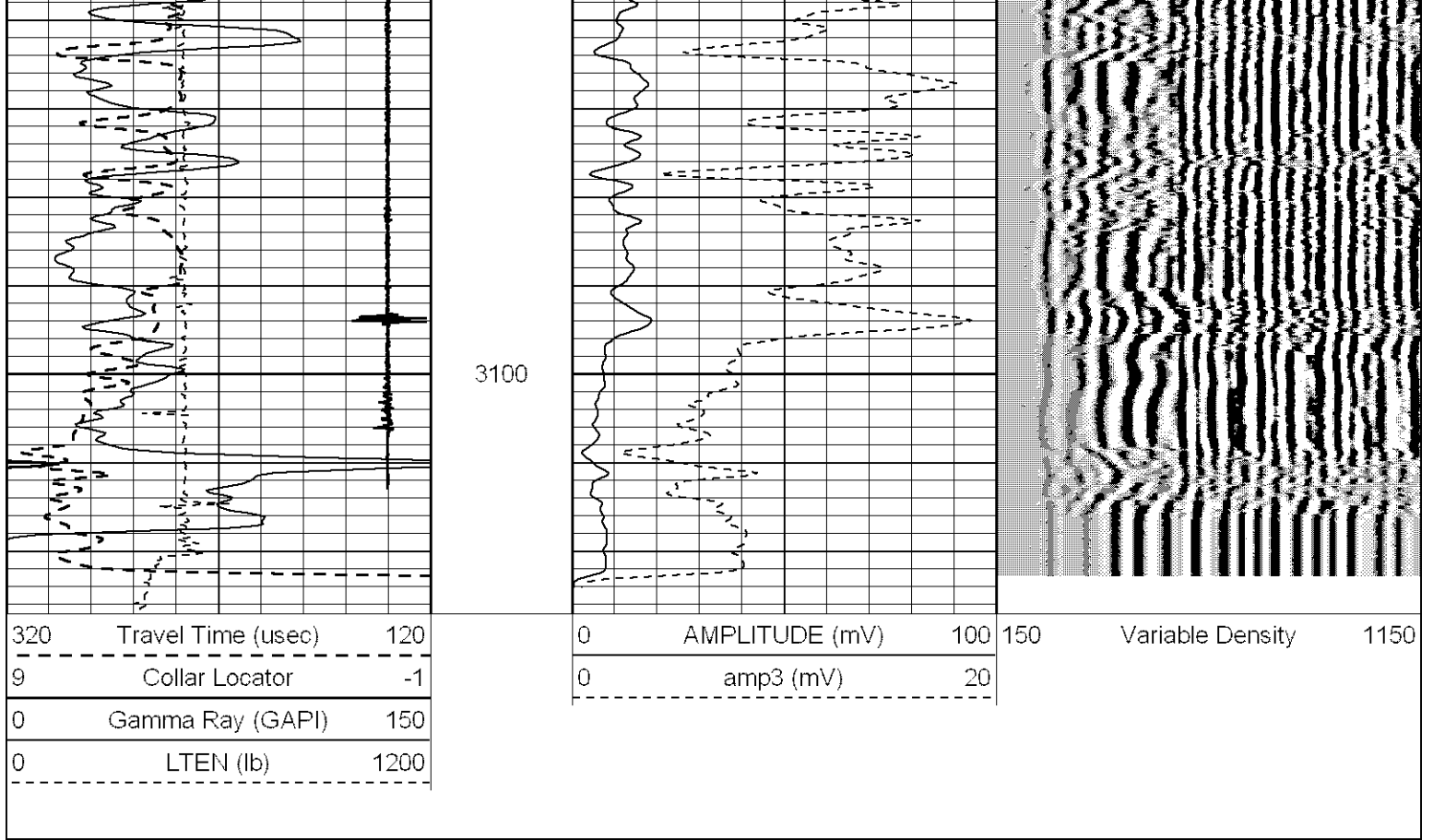


REPEAT SECTION

Database File: wess10.db
 Dataset Pathname: pass2
 Presentation Format: cbl01
 Dataset Creation: Mon Jul 27 11:13:13 2015 by Log 6.1
 Charted by: Depth in Feet scaled 1:240

320	Travel Time (usec)	120	0	AMPLITUDE (mV)	100	150	Variable Density	1150
9	Collar Locator	-1	0	amp3 (mV)	20			
0	Gamma Ray (GAPI)	150						
0	LTEN (lb)	1200						

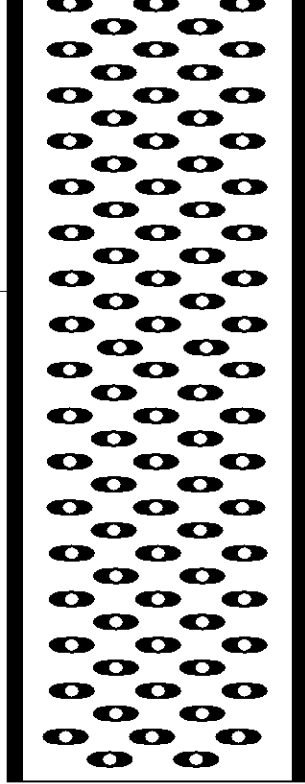




Sensor	Offset (ft)	Schematic	Description	Len (ft)	OD (in)	Wt (lb)
			CHD-STNDRD (1) Standard Cable Head	1.00	1.44	10.00
CCL	14.00		CCL-sie1 (ccl1) slimccl	1.83	1.69	10.00
GR	8.92		GR-sie (gr1) slimholegr	5.50	1.69	40.00

TT3
WVF3

4.25
4.25



CBL-sielong (b2gr2)
big cbl tool

7.92

3.25

50.00

Dataset: wess10.db: field/well/run1/pass3
Total Length: 16.25 ft
Total Weight: 110.00 lb
O.D. 3.25 in